

Figure 1 Annual trend of elderly tuberculosis notification rates, 1987-2010
 Note: New criteria for tuberculosis notification has been applied since 1998.

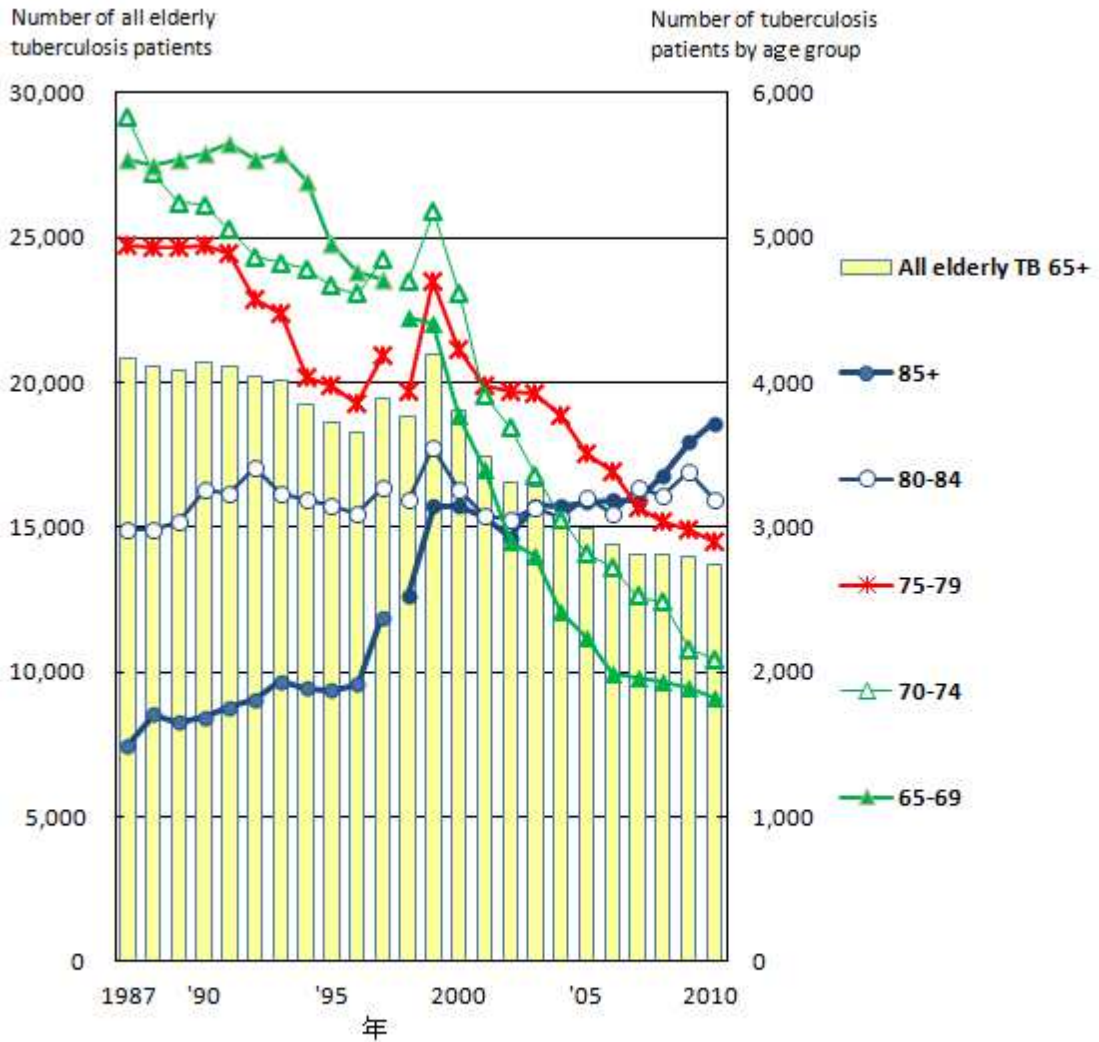


Figure 2 Annual trend of the number of newly notified elderly tuberculosis (TB) patients, 1987-2010

Note: New criteria for tuberculosis notification has been applied since 1998.

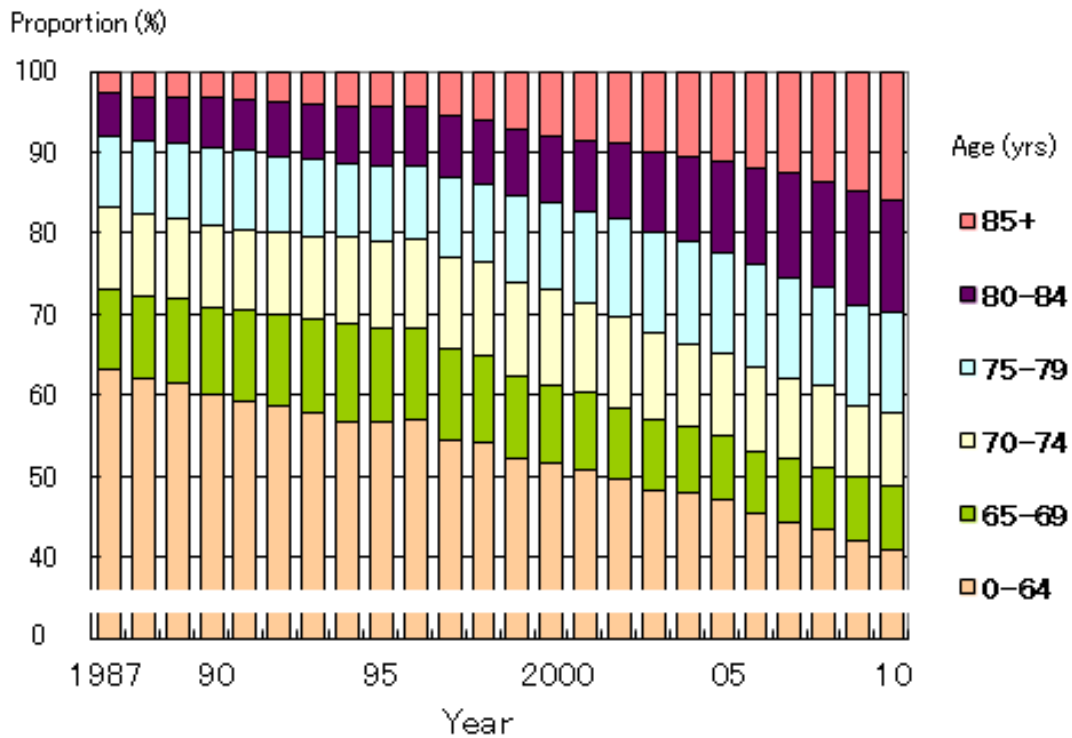


Figure 3 Annual trend of the proportion of elderly tuberculosis patients among all newly notified tuberculosis patients, 1987-2010

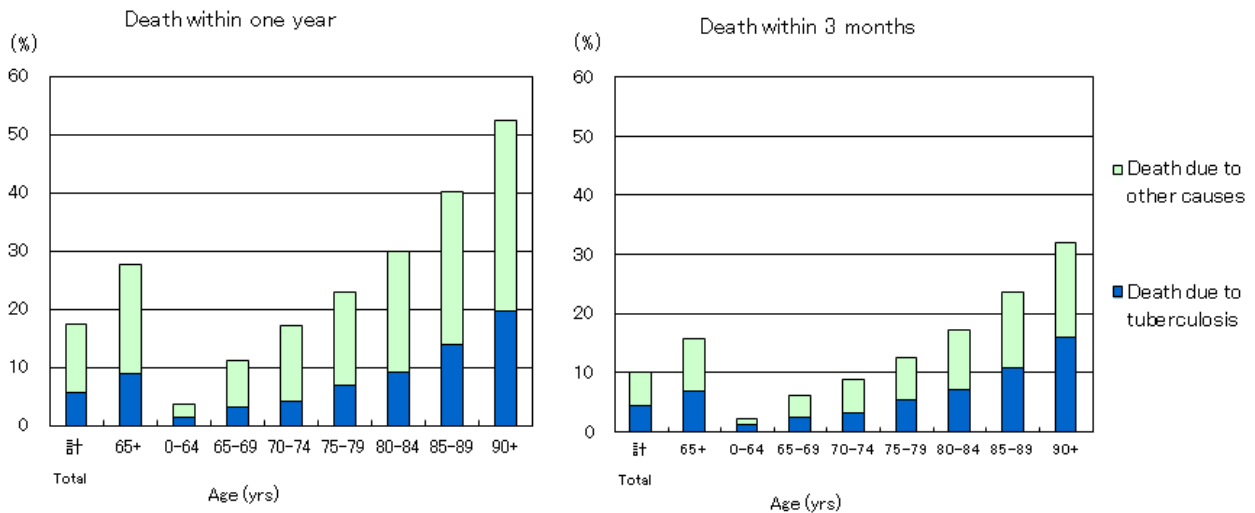


Figure 4 Proportion of death among newly notified tuberculosis patients in 2009 by age group, cause of death and duration till death

Table 1 Comparison of epidemiological indicators of newly notified tuberculosis patients by sex and age group, 2010

		Age (yrs)					
		All ages	the young	the elderly			
				15-64	all 65+	65-74	75-84
Number of newly notified tuberculosis patients (all forms, n)	Total	23,261	9,427	13,745	3,918	6,102	3,725
	Male	14,628	6,075	8,512	2,662	3,861	1,989
	Female	8,633	3,352	5,233	1,256	2,241	1,736
Tuberculosis notification rates (all forms, per 100,000 population)	Total	18.2	11.7	46.9	25.9	59.4	96.0
	Male	23.7	15.0	68.0	37.3	89.8	181.8
	Female	13.3	8.4	31.2	15.7	37.5	62.3
Number of newly notified extra-pulmonary tuberculosis patients (n)	Total	4,933	1,623	3,285	956	1,483	846
	Male	2,597	880	1,702	527	777	398
	Female	2,336	743	1,583	429	706	448
Proportion of extra-pulmonary tuberculosis patients among newly notified tuberculosis patients (%)	Total	21.2	17.2	23.9	24.4	24.3	22.7
	Male	17.8	14.5	20.0	19.8	20.1	20.0
	Female	27.1	22.2	30.3	34.2	31.5	25.8
Number of newly notified pulmonary tuberculosis patients (n)	Total	18,328	7,804	10,460	2,962	4,619	2,879
	Male	12,031	5,195	6,810	2,135	3,084	1,591
	Female	6,297	2,609	3,650	827	1,535	1,288
Proportion of pulmonary tuberculosis patients among newly notified tuberculosis patients (%)	Total	78.8	82.8	76.1	75.6	75.7	77.3
	Male	82.2	85.5	80.0	80.2	79.9	80.0
	Female	72.9	77.8	69.7	65.8	68.5	74.2
Proportion of bacillary tuberculosis patients among all pulmonary tuberculosis patients (%)	Total	83.5	76.4	89.0	84.2	89.2	93.7
	Male	84.2	78.9	88.5	84.4	88.5	93.7
	Female	82.0	71.3	90.1	83.6	90.7	93.7
Proportion of sputum-smear positive pulmonary tuberculosis patients among all pulmonary tuberculosis patients (%)	Total	49.2	41.4	55.3	49.8	56.2	59.5
	Male	50.5	44.8	55.0	50.6	55.0	61.0
	Female	46.8	34.6	55.8	47.6	58.7	57.5
Proportion of cavitory pulmonary tuberculosis patients among all pulmonary tuberculosis patients (%)	Total	32.2	35.8	29.6	33.9	29.4	25.5
	Male	35.7	40.2	32.5	37.3	31.8	27.5
	Female	25.4	27.2	24.2	25.2	24.8	23.1
Proportion of far-advanced cavitory pulmonary tuberculosis patients among all pulmonary tuberculosis patients (%)	Total	1.8	2.5	1.2	1.9	1.1	0.7
	Male	2.1	3.2	1.3	1.9	1.2	0.6
	Female	1.1	1.2	1.1	1.8	0.9	0.8
Proportion of symptomatic pulmonary tuberculosis patients upon diagnosis among all pulmonary tuberculosis (%)	Total	74.7	65.3	82.0	76.8	82.0	87.4
	Male	75.0	65.9	82.1	78.2	82.0	87.5
	Female	74.2	64.0	81.9	73.3	82.1	87.3
Proportion of pulmonary tuberculosis patients with only symptoms other than respiratory symptoms among symptomatic pulmonary tuberculosis patients (%)	Total	16.4	11.8	20.0	16.2	20.1	23.6
	Male	15.8	11.6	19.0	16.7	19.7	20.9
	Female	17.7	12.2	21.7	15.0	20.8	27.0
Proportion of patient delay of 2 months or more among symptomatic pulmonary tuberculosis patients (%)*	Total	18.3	25.9	13.8	18.8	13.3	10.2
	Male	19.1	27.7	13.9	18.2	13.6	9.3
	Female	16.7	22.3	13.6	20.4	12.7	11.3
Proportion of doctor delay of 1 month or more among symptomatic pulmonary tuberculosis patients (%)*	Total	22.6	20.0	24.2	23.8	25.1	23.2
	Male	21.4	17.8	23.6	23.3	24.0	23.4
	Female	24.9	24.5	25.2	25.0	27.4	22.9
Proportion of total delay of 3 months or more among symptomatic pulmonary tuberculosis patients (%)*	Total	19.6	25.6	16.1	20.4	16.6	11.5
	Male	19.3	25.1	15.8	19.2	16.6	10.3
	Female	20.2	26.8	16.7	23.8	16.6	13.1
Proportion of tuberculosis patients detected as out-patient from other diseases among newly notified tuberculosis patients (%)	Total	9.9	5.6	12.9	14.0	14.0	10.1
	Male	10.1	5.5	13.5	13.9	15.0	10.2
	Female	9.5	5.8	12.0	14.3	12.2	10.0
Proportion of tuberculosis patients detected as in-patient from other diseases among newly notified tuberculosis patients (%)	Total	12.0	4.5	17.2	13.0	17.2	21.6
	Male	11.9	5.3	16.7	12.4	16.6	22.5
	Female	12.2	3.3	18.0	14.2	18.3	20.6

Subjects: * Excluding the patients of unknown delays

Table 2 Number and proportion of elderly tuberculosis patients by prefecture and city, 2010

65+ (years)			85+ (years)		
Area	<i>n</i>	%	Area	<i>n</i>	%
Japan	13,745	59.1	Japan	3,725	16.0
Toyama	110	76.4	Ishikawa	57	29.7
Yamaguchi	174	76.3	Okayama	49	28.5
Ishikawa	146	76.0	Toyama	40	27.8
Gifu	311	75.9	Akita	43	27.6
Shizuoka city	115	75.2	Shizuoka city	41	26.8
Tokushima	105	75.0	Nagasaki	88	26.5
Nagasaki	247	74.4	Shimane	34	26.4
Akita	116	74.4	Hamamatsu city	33	26.2
Mie	216	73.7	Kochi	35	25.9
Oita	168	72.7	Gunma	57	25.9
Okayama	125	72.7	Kagoshima	91	25.9
Kumamoto	223	72.6	Saga	45	25.4
Iwate	117	72.2	Iwate	41	25.3
Kochi	97	71.9	Nagano	49	25.0
Niigata city	66	71.0	Yamanashi	32	24.6
Kanagawa	222	51.5	Sakai city	27	11.3
Osaka city	648	51.2	Chiba city	19	10.4
Yokohama city	364	50.4	Ibaraki	40	9.8
Saitama	447	48.1	Chiba	87	9.8
Chiba	409	45.9	Saitama	88	9.5
Tokyo (excluding 23 wards)	327	45.7	Tokyo 23wards	216	9.3
Kawasaki city	130	42.8	Kawasaki city	28	9.2
Tokyo 23 wards	989	42.4	Osaka city	104	8.2
Saitama city	75	35.5	Saitama city	14	6.6
Sagamihara city	42	35.0	Sagamihara city	6	5.0

Descending order by the proportion of elderly tuberculosis patients