

Figure 1 Proportion of bacteriologically confirmed cases among newly notified pulmonary tuberculosis patients, 1975–2010

Sources of information and subjects: Annual tuberculosis reports from public health centers

1975–1978: All forms of tuberculosis

1979–1986: Pulmonary tuberculosis

Nationwide computerized tuberculosis surveillance system

1987–1997: Pulmonary Tuberculosis

1998–2006: Pulmonary tuberculosis (New patient criteria for notification were applied)

2007–2009: Pulmonary tuberculosis (Item of nucleic acid amplification was added)

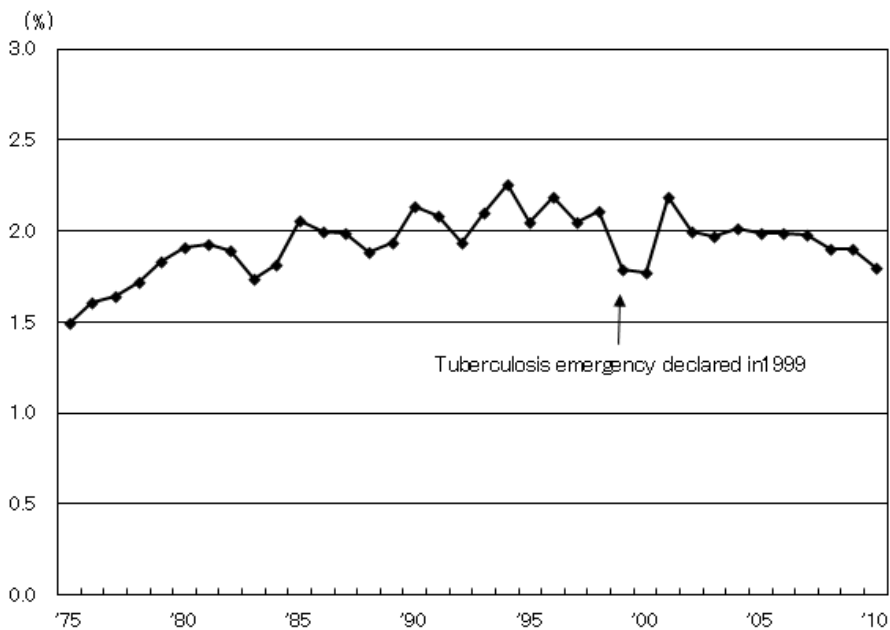


Figure 2 Proportion of far-advanced cavitory cases among newly notified pulmonary tuberculosis patients, 1975–2010

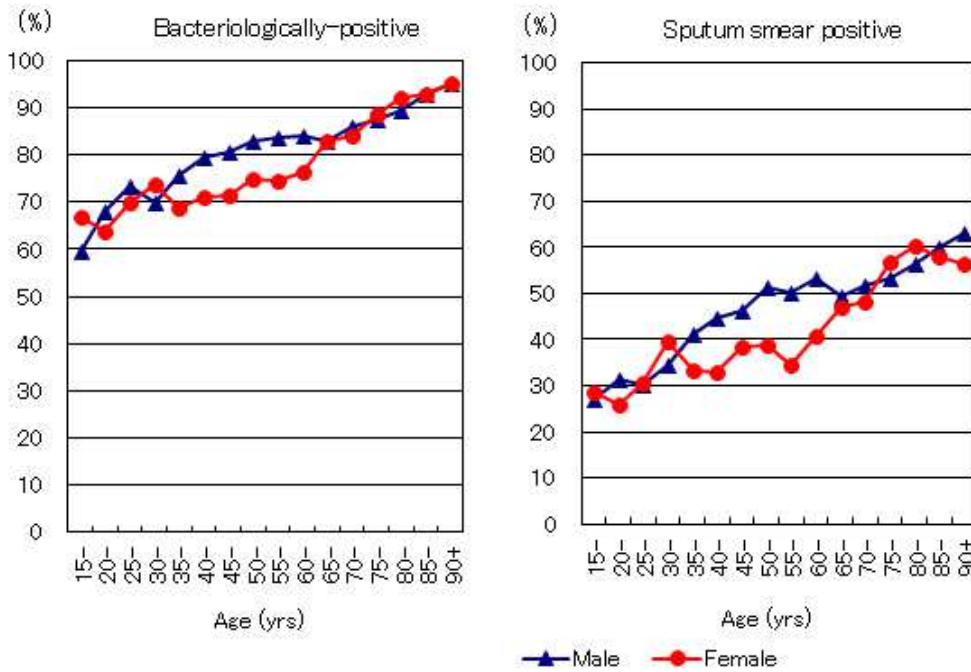


Figure 3 Proportion of bacteriologically confirmed cases among newly notified pulmonary tuberculosis patients by sex and 5-year age group, 2010

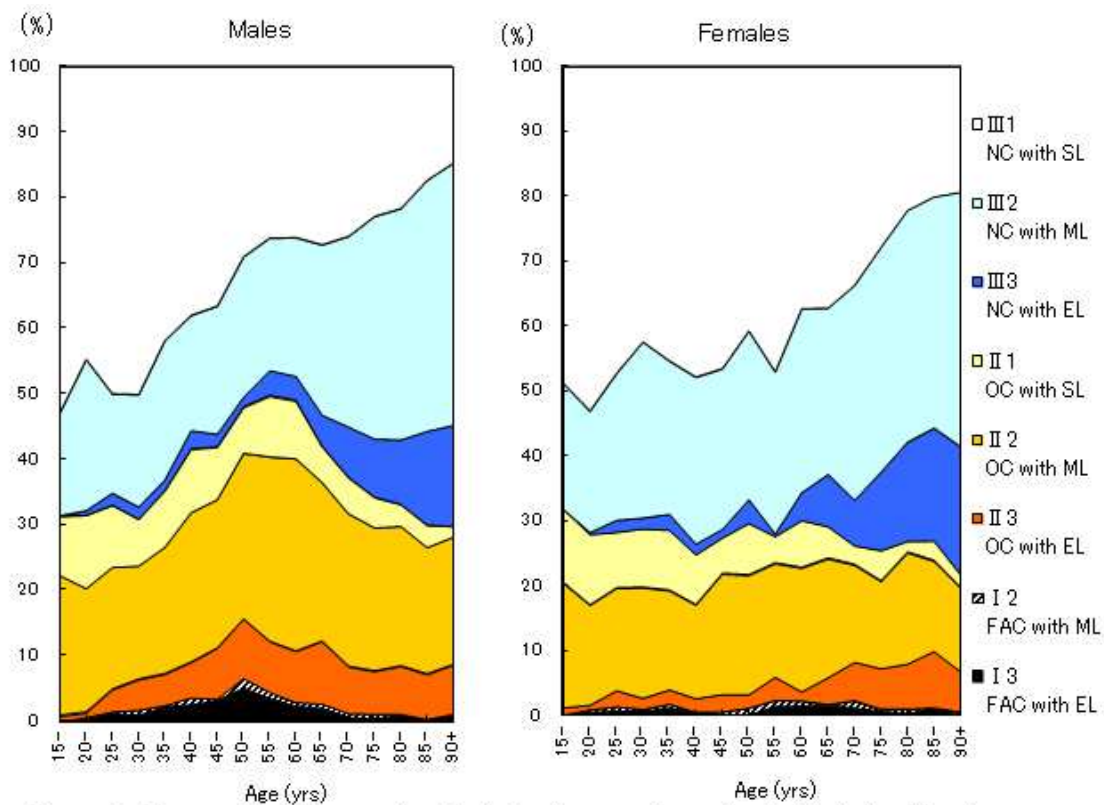


Figure 4 Proportion of cases classified by chest radiography Gakkai classification by sex and 5-year age group, 2010

NC : Non-cavitary SL : Slight lesion
 OC : Other cavitary ML : Moderate lesion
 FAC: Far-advance cavitary EL : Extensive lesion

Table Proportion of cavitory or/and sputum smear positive cases among newly notified pulmonary tuberculosis patients aged 30–59 years, 2010

	Male								Female							
	Pulmonary tuberculosis	Cavitory or sputum smear positive			Cavitory and sputum smear positive			Pulmonary tuberculosis	Cavitory or sputum smear positive			Cavitory and sputum smear positive				
		n	%	Ratio	n	%	Ratio		n	%	Ratio	n	%	Ratio		
Service workers	186	112	60.2	1.5	64	34.4	2.1	135	72	53.3	1.4	32	23.7	2.1		
Medical workers	67	27	40.3	1.0	11	16.4	1.0	271	103	38.0	1.0	31	11.4	1.0		
Teachers / Nursery nurses	24	9	37.5	0.9	3	12.5	0.8	25	14	56.0	1.5	4	16.0	1.4		
Other regular workers	1,606	801	49.9	1.2	428	26.7	1.6	392	161	41.1	1.1	52	13.3	1.2		
Other temporary / daily workers	213	143	67.1	1.7	86	40.4	2.5	156	78	50.0	1.3	29	18.6	1.6		
Other self-employed	267	174	65.2	1.6	98	36.7	2.2	57	37	64.9	1.7	16	28.1	2.5		
Jobless / Others	765	488	63.8	1.6	282	36.9	2.2	307	168	54.7	1.4	68	22.1	1.9		
Others	112	43	38.4	1.0	23	20.5	1.3	290	126	43.4	1.1	38	13.1	1.1		
Total	3,240	1,797	55.5		995	30.7		1,633	759	46.5		270	16.5			

Others: Houskeepers / Students / Unknown.

Ratio: The ratio of each proportion to that of medical workers.

Table 1 Number of newly notified tuberculosis patients with HIV infection, by sex and age group, 2010 and 2007–2010

Age group	Sputum smear positive		Other bacteriologically –positive		Bacteriologically –negative		Extra–pulmonary		Total	
	Male	Female	Male	Female	Male	Female	Male	Female	Male	Female
2010 Calendar year										
Total	18 (2)	1 (1)	12 (2)	1	6 (1)	0	13 (5)	2	49 (10)	4 (1)
0–19	0	0	0	0	0	0	0	0	0	0
20–24	0	0	0	0	0	0	0	0	0	0
25–29	2 (1)	1 (1)	0	0	0	0	1 (1)	0	3 (2)	1 (1)
30–34	1 (1)	0	3	1	0	0	2 (2)	1	6 (3)	2
35–39	3	0	2 (1)	0	0	0	2	0	7 (1)	0
40–44	2	0	2 (1)	0	3 (1)	0	3 (1)	0	10 (3)	0
45–49	1	0	3	0	0	0	4 (1)	0	8 (1)	0
50–54	4	0	1	0	0	0	0	0	5	0
55–59	1	0	0	0	0	0	1	0	2	0
60–64	1	0	1	0	1	0	0	0	3	0
65–69	2	0	0	0	0	0	0	0	2	0
70–74	0	0	0	0	1	0	0	0	1	0
75–79	1	0	0	0	1	0	0	1	2	1
80+	0	0	0	0	0	0	0	0	0	0
2007–2010 Calendar year										
Total	66 (6)	9 (8)	36 (7)	4 (3)	21 (1)	2 (1)	81 (18)	10 (6)	204 (32)	25 (18)
0–19	1 (1)	0	0	0	0	0	0	0	1 (1)	0
20–24	2 (1)	0	0	0	0	0	1	1	3 (1)	1
25–29	4 (2)	2 (2)	1 (1)	1 (1)	0	0	6 (1)	0	11 (4)	3 (3)
30–34	7 (2)	4 (4)	5	2 (1)	1	1 (1)	10 (4)	2 (1)	23 (6)	9 (7)
35–39	12	1 (1)	12 (4)	1 (1)	4	0	13 (3)	2 (2)	41 (7)	4 (4)
40–44	14	1 (1)	7 (2)	0	6 (1)	1	20 (8)	3 (2)	47 (11)	5 (3)
45–49	6	0	3	0	2	0	15 (2)	0	26 (2)	0
50–54	6	0	4	0	2	0	5	0	17	0
55–59	3	0	1	0	3	0	5	1 (1)	12	1 (1)
60–64	4	1	2	0	1	0	3	0	10	1
65–69	5	0	0	0	0	0	0	0	5	0
70–74	0	0	1	0	1	0	1	0	3	0
75–79	2	0	0	0	1	0	2	1	5	1
80+	0	0	0	0	0	0	0	0	0	0

Re–count of foreigners

HIV: Human Immunodeficiency Virus.

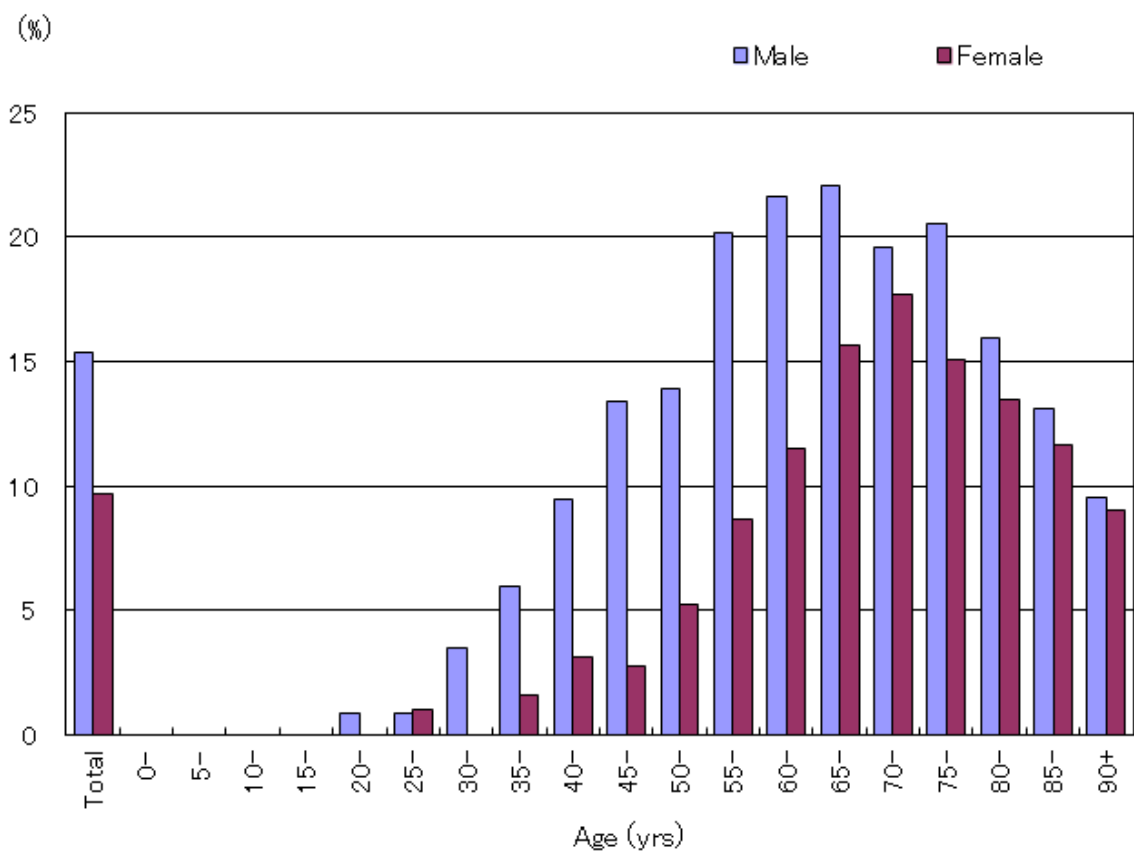


Figure Proportion of newly notified tuberculosis patients with diabetes mellitus in each age-group by sex, 2010

Table 4 Drug susceptibility test results among newly notified pulmonary tuberculosis patients, by sex and age group, 2010 and 2007–2010 (Re-count of foreigners)

Age group	Total										New treatment (Re-count)									
	Male					Female					Male					Female				
	DST results obtained	MDR	Any INH resistance	Any RFP resistance	Any resistance	DST results obtained	MDR	Any INH resistance	Any RFP resistance	Any resistance	DST results obtained	MDR	Any INH resistance	Any RFP resistance	Any resistance	DST results obtained	MDR	Any INH resistance	Any RFP resistance	Any resistance
2007–2010 Calendar year																				
Total	364	15	29	18	66	435	24	55	32	104	345	10	20	13	59	405	17	46	23	90
0–19	14	1	2	1	6	16	1	2	1	2	14	1	2	1	6	15	1	1	1	1
20–29	165	11	17	14	31	196	17	32	22	60	160	8	11	11	28	187	12	27	16	54
30–39	79	2	5	2	11	114	3	9	5	19	77	1	4	1	10	104	1	7	2	16
40–49	41	1	5	1	11	56	1	7	2	14	37	0	3	0	8	51	1	7	2	13
50–59	21	0	0	0	1	21	0	2	0	3	18	0	0	0	1	18	0	1	0	1
60–69	18	0	0	0	5	14	1	2	1	3	15	0	0	0	5	14	1	2	1	3
70–79	15	0	0	0	1	8	1	1	1	2	14	0	0	0	1	7	1	1	1	1
80+	11	0	0	0	0	10	0	0	0	1	10	0	0	0	0	9	0	0	0	1
2007–2010 Calendar year																				
Total	100%	4.1	8.0	4.9	18.1	100%	5.5	12.6	7.4	23.9	100%	2.9	5.8	3.8	17.1	100%	4.2	11.4	5.7	22.2
0–19	100	7.1	14.3	7.1	42.9	100	6.3	12.5	6.3	12.5	100	7.1	14.3	7.1	42.9	100	6.7	6.7	6.7	6.7
20–29	100	6.7	10.3	8.5	18.8	100	8.7	16.3	11.2	30.6	100	5.0	6.9	6.9	17.5	100	6.4	14.4	8.6	28.9
30–39	100	2.5	6.3	2.5	13.9	100	2.6	7.9	4.4	16.7	100	1.3	5.2	1.3	13.0	100	1.0	6.7	1.9	15.4
40–49	100	2.4	12.2	2.4	26.8	100	1.8	12.5	3.6	25.0	100	0.0	8.1	0.0	21.6	100	2.0	13.7	3.9	25.5
50–59	100	0.0	0.0	0.0	4.8	100	0.0	9.5	0.0	14.3	100	0.0	0.0	0.0	5.6	100	0.0	5.6	0.0	5.6
60–69	100	0.0	0.0	0.0	27.8	100	7.1	14.3	7.1	21.4	100	0.0	0.0	0.0	33.3	100	7.1	14.3	7.1	21.4
70–79	100	0.0	0.0	0.0	6.7	100	12.5	12.5	12.5	25.0	100	0.0	0.0	0.0	7.1	100	14.3	14.3	14.3	14.3
80+	100	0.0	0.0	0.0	0.0	100	0.0	0.0	0.0	10.0	100	0.0	0.0	0.0	0.0	100	0.0	0.0	0.0	11.1

DST: Drug susceptibility test. MDR: Multi-drug resistance, i.e., resistant to at least INH and RFP. INH: Isoniazid. RFP: Rifampicin.