

【患者発見】

表1 新登録結核患者の発見方法、2007～2019年

Table1 Proportion of mode of detection among newly notified tuberculosis patients, 2007-2019

| 年 Year | 新登録 患者 Newly notified TB patients | 個別 健診 Individual medical checkup | 定期健診 Mass screening | | | | | | | | 接触者健診 Contact examination | | | | 医療機関 Medical institutions | | | | | | その他 Others | | 不明 Unknown | | |
|-----------|---|---|------------------------|-----|-----------------|-----|-----------------|-------|------------------|-----|------------------------------|-----|---------------|-----|--|--------|--|-------|---|-------|---------------|-----|---------------|-----|-----|
| | | | 学校 Schools | | 住民 Residents | | 職場 Employees | | 施設 Facilities | | 家族 Family | | その他 Others | | 有症状受診(*1) Outpatients with TB symptoms(*1) | | 入院中 Inpatients with other diseases | | 通院中 Outpatients with other diseases | | n | % | n | % | |
| | | | n | % | n | % | n | % | n | % | n | % | n | % | n | % | n | % | | | | | | | |
| 2007 | 25,311 | 537 | 2.1 | 217 | 0.9 | 636 | 2.5 | 1,931 | 7.6 | 145 | 0.6 | 355 | 1.4 | 370 | 1.5 | 16,997 | 67.2 | 2,031 | 8.0 | 1,611 | 6.4 | 340 | 1.3 | 141 | 0.6 |
| 2008 | 24,760 | 639 | 2.6 | 195 | 0.8 | 486 | 2.0 | 1,877 | 7.6 | 144 | 0.6 | 325 | 1.3 | 410 | 1.7 | 15,347 | 62.0 | 2,681 | 10.8 | 2,100 | 8.5 | 316 | 1.3 | 240 | 1.0 |
| 2009 | 24,170 | 611 | 2.5 | 197 | 0.8 | 550 | 2.3 | 1,749 | 7.2 | 136 | 0.6 | 324 | 1.3 | 311 | 1.3 | 14,864 | 61.5 | 2,752 | 11.4 | 2,220 | 9.2 | 301 | 1.2 | 155 | 0.6 |
| 2010 | 23,261 | 507 | 2.2 | 244 | 1.0 | 544 | 2.3 | 1,618 | 7.0 | 128 | 0.6 | 313 | 1.3 | 350 | 1.5 | 13,901 | 59.8 | 2,792 | 12.0 | 2,305 | 9.9 | 333 | 1.4 | 226 | 1.0 |
| 2011 | 22,681 | 470 | 2.1 | 188 | 0.8 | 497 | 2.2 | 1,531 | 6.8 | 126 | 0.6 | 354 | 1.6 | 482 | 2.1 | 13,177 | 58.1 | 2,916 | 12.9 | 2,515 | 11.1 | 330 | 1.5 | 95 | 0.4 |
| 2012 | 21,283 | 409 | 1.9 | 163 | 0.8 | 498 | 2.3 | 1,424 | 6.7 | 121 | 0.6 | 315 | 1.5 | 374 | 1.8 | 12,284 | 57.7 | 2,941 | 13.8 | 2,312 | 10.9 | 357 | 1.7 | 85 | 0.4 |
| 2013 | 20,495 | 413 | 2.0 | 172 | 0.8 | 455 | 2.2 | 1,246 | 6.1 | 89 | 0.4 | 314 | 1.5 | 333 | 1.6 | 11,978 | 58.4 | 2,745 | 13.4 | 2,306 | 11.3 | 336 | 1.6 | 108 | 0.5 |
| 2014 | 19,615 | 344 | 1.8 | 201 | 1.0 | 404 | 2.1 | 1,221 | 6.2 | 92 | 0.5 | 303 | 1.5 | 333 | 1.7 | 11,441 | 58.3 | 2,591 | 13.2 | 2,210 | 11.3 | 328 | 1.7 | 147 | 0.7 |
| 2015 | 18,280 | 319 | 1.7 | 192 | 1.1 | 359 | 2.0 | 1,147 | 6.3 | 78 | 0.4 | 248 | 1.4 | 263 | 1.4 | 10,556 | 57.7 | 2,630 | 14.4 | 2,043 | 11.2 | 144 | 0.8 | 127 | 0.7 |
| 2016 | 17,625 | 319 | 1.8 | 250 | 1.4 | 355 | 2.0 | 1,056 | 6.0 | 98 | 0.6 | 211 | 1.2 | 409 | 2.3 | 10,073 | 57.2 | 2,471 | 14.0 | 1,971 | 11.2 | 146 | 0.8 | 98 | 0.6 |
| 2017 | 16,789 | 331 | 2.0 | 259 | 1.5 | 336 | 2.0 | 1,088 | 6.5 | 70 | 0.4 | 256 | 1.5 | 323 | 1.9 | 9,338 | 55.6 | 2,528 | 15.1 | 1,900 | 11.3 | 150 | 0.9 | 73 | 0.4 |
| 2018 | 15,590 | 290 | 1.9 | 226 | 1.4 | 288 | 1.8 | 1,077 | 6.9 | 74 | 0.5 | 239 | 1.5 | 314 | 2.0 | 8,617 | 55.3 | 2,317 | 14.9 | 1,798 | 11.5 | 139 | 0.9 | 56 | 0.4 |
| 2019 | 14,460 | 278 | 1.9 | 226 | 1.6 | 314 | 2.2 | 983 | 6.8 | 76 | 0.5 | 210 | 1.5 | 358 | 2.5 | 7,746 | 53.6 | 2,288 | 15.8 | 1,690 | 11.7 | 104 | 0.7 | 62 | 0.4 |
| 2019年 | | | | | | | | | | | | | | | | | | | | | | | | | |
| Age group | | | | | | | | | | | | | | | | | | | | | | | | | |
| 0～9 | 27 | 0 | 0.0 | 1 | 3.7 | 0 | 0.0 | 0 | 0.0 | 0 | 0.0 | 8 | 29.6 | 2 | 7.4 | 10 | 37.0 | 2 | 7.4 | 1 | 3.7 | 3 | 11.1 | 0 | 0.0 |
| 10～19 | 153 | 5 | 3.3 | 48 | 31.4 | 1 | 0.7 | 7 | 4.6 | 0 | 0.0 | 16 | 10.5 | 6 | 3.9 | 62 | 40.5 | 1 | 0.7 | 1 | 0.7 | 0 | 0.0 | 1 | 0.7 |
| 20～29 | 1,164 | 31 | 2.7 | 166 | 14.3 | 5 | 0.4 | 244 | 21.0 | 5 | 0.4 | 14 | 1.2 | 86 | 7.4 | 537 | 46.1 | 19 | 1.6 | 20 | 1.7 | 6 | 0.5 | 6 | 0.5 |
| 30～39 | 767 | 18 | 2.3 | 10 | 1.3 | 4 | 0.5 | 215 | 28.0 | 8 | 1.0 | 11 | 1.4 | 34 | 4.4 | 406 | 52.9 | 17 | 2.2 | 22 | 2.9 | 1 | 0.1 | 4 | 0.5 |
| 40～49 | 985 | 33 | 3.4 | 1 | 0.1 | 17 | 1.7 | 208 | 21.1 | 7 | 0.7 | 28 | 2.8 | 58 | 5.9 | 505 | 51.3 | 42 | 4.3 | 62 | 6.3 | 12 | 1.2 | 5 | 0.5 |
| 50～59 | 1,054 | 28 | 2.7 | 0 | 0.0 | 18 | 1.7 | 169 | 16.0 | 5 | 0.5 | 32 | 3.0 | 49 | 4.6 | 532 | 50.5 | 70 | 6.6 | 120 | 11.4 | 12 | 1.1 | 5 | 0.5 |
| 60～69 | 1,472 | 49 | 3.3 | 0 | 0.0 | 44 | 3.0 | 105 | 7.1 | 8 | 0.5 | 35 | 2.4 | 42 | 2.9 | 754 | 51.2 | 175 | 11.9 | 217 | 14.7 | 22 | 1.5 | 6 | 0.4 |
| 70～79 | 2,810 | 61 | 2.2 | 0 | 0.0 | 112 | 4.0 | 32 | 1.1 | 6 | 0.2 | 31 | 1.1 | 31 | 1.1 | 1,473 | 52.4 | 479 | 17.0 | 526 | 18.7 | 21 | 0.7 | 13 | 0.5 |
| 80～89 | 4,061 | 41 | 1.0 | 0 | 0.0 | 93 | 2.3 | 3 | 0.1 | 17 | 0.4 | 32 | 0.8 | 36 | 0.9 | 2,297 | 56.6 | 924 | 22.8 | 569 | 14.0 | 19 | 0.5 | 15 | 0.4 |
| 90～ | 1,967 | 12 | 0.6 | 0 | 0.0 | 20 | 1.0 | 0 | 0.0 | 20 | 1.0 | 3 | 0.2 | 14 | 0.7 | 1,170 | 59.5 | 559 | 28.4 | 152 | 7.7 | 8 | 0.4 | 7 | 0.4 |

TB: tuberculosis

*1 有症状: 咳・痰・血痰・喀血等の「呼吸器症状」や、喘鳴、胸痛、背部痛、息切れ、発熱、寝汗、全身倦怠、体重減少等の「その他の症状」を有する場合。

TB symptoms: Respiratory symptoms such as cough, sputum expectoration, bloody sputum, and hemoptysis; and other symptoms such as wheezing, chest pain, back pain, dyspnea, fever, night sweating, fatigue tendency, and weight

総数には、その他集団検診 49名、登録中の健康診断 76名がある。←修正しました2021.10.27

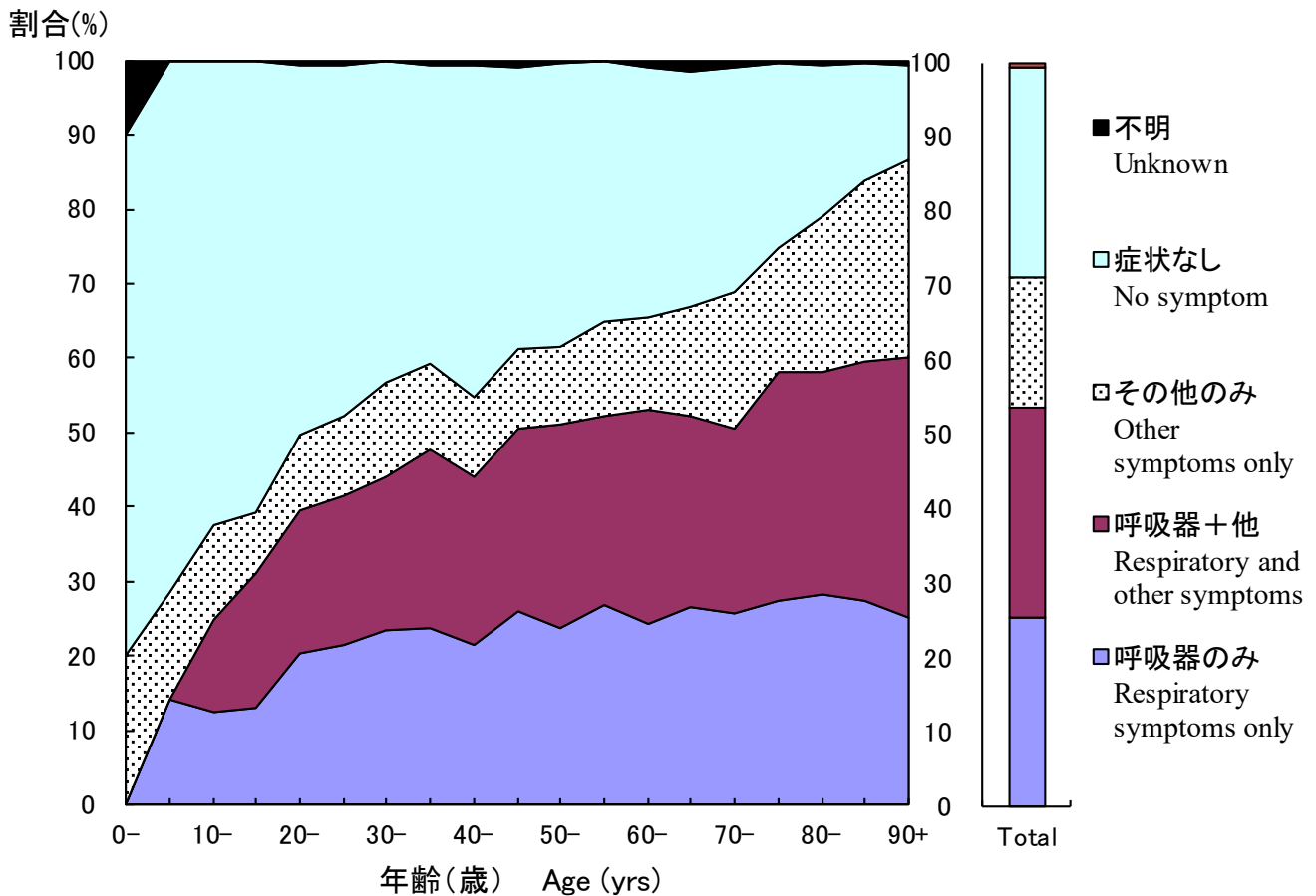


図 1 新登録肺結核中年齢5歳階層別症状の有無、2019年

Fig.1 Proportion of symptoms among newly notified pulmonary tuberculosis patients by 5- years age group, in 2019

呼吸器症状は咳、痰、血痰、喀血を含む。その他の症状は喘鳴、胸痛、背部痛、息切れ、発熱、寝汗、全身倦怠、体重減少を含む。

Respiratory symptoms include cough, sputum expectoration, bloody sputum, and hemoptysis. Other symptoms include wheezing, chest pain, back pain, dyspnea, fever, night sweating, fatigue tendency, and weight loss.

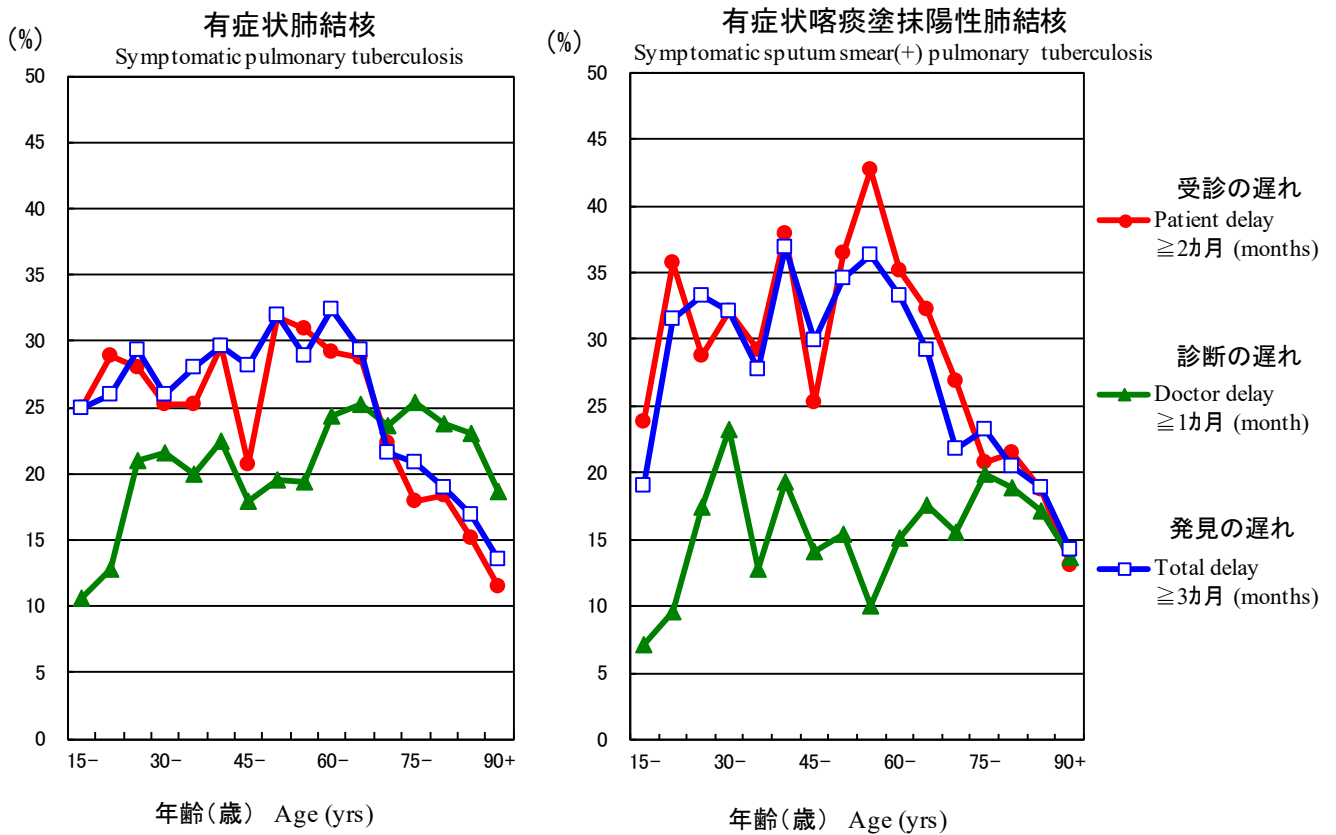


図 2 新登録有症状肺結核中年齢5歳階層別発見の遅れの割合、2019年

Fig.2 Proportion of patient delay, doctor delay and total delay among symptomatic pulmonary tuberculosis patients by 5-year age group, in 2019

受診の遅れ:「発病の時期」(結核の症状が初めて自覚された時期)から「初診の時期」(結核による症状を訴えて初めて医療機関を受診した時期)までの期間が2ヵ月以上である場合。

Patient delay: time interval from the onset of symptoms to the first visit to a medical institution of 2 months or longer

診断の遅れ:「初診の時期」から「診断の時期」(結核と診断された時期)までの期間が1ヵ月以上である場合。

Doctor delay: time interval from the first visit to a medical institution to the diagnosis of tuberculosis of 1 month or longer

発見の遅れ:「発病の時期」から「診断の時期」までの期間が3ヵ月以上である場合。

Total delay: time interval from the onset of symptoms to the diagnosis of tuberculosis is 3 months or longer

旧表 新登録結核患者の発見方法、年齢階層別、2019年

| Previous table Proportion of mode of detection among newly notified TB patients by age group, 2019 | | | | | | | | | | | | | | |
|--|-------------------------------------|------------------------------------|------------------------|-----------------|-----------------|------------------|------------------------------|---------------|--|---------------------------------------|--|---------------|---------------|---|
| 年齢階層 Age groups | 新登録患者 Newly notified TB patients | 個別健診 Individual medical checkup | 定期健診 Mass screening | | | | 接触者健診 Contact examination | | 医療機関 Medical institutions | | | その他 Others | 不明 Unknown | |
| | | | 学校 Schools | 住民 Residents | 職場 Employees | 施設 Facilities | 家族 Family | その他 Others | 有症状受診 Outpatients with TB symptoms (*1) | 入院中 Inpatients with other diseases | 通院中 Outpatients with other diseases | | | |
| | | | | | | | | | | | | | | % |
| <i>n</i> | % | % | % | % | % | % | % | % | % | % | % | % | % | |
| 全結核 All forms of TB | | | | | | | | | | | | | | |
| 総数 Total | 14,460 | 1.9 | 1.6 | 2.2 | 6.8 | 0.5 | 1.5 | 2.5 | 53.6 | 15.8 | 11.7 | 0.7 | 0.4 | |
| 0-14 | 38 | 2.6 | 2.6 | 0.0 | 0.0 | 0.0 | 28.9 | 5.3 | 42.1 | 5.3 | 5.3 | 7.9 | 0.0 | |
| 15-19 | 142 | 2.8 | 33.8 | 0.7 | 4.9 | 0.0 | 9.2 | 4.2 | 39.4 | 0.7 | 0.0 | 0.0 | 0.7 | |
| 20-24 | 618 | 3.6 | 17.3 | 0.3 | 18.4 | 0.5 | 1.5 | 7.3 | 44.5 | 1.8 | 1.3 | 0.6 | 0.2 | |
| 25-29 | 546 | 1.6 | 10.8 | 0.5 | 23.8 | 0.4 | 0.9 | 7.5 | 48.0 | 1.5 | 2.2 | 0.4 | 0.9 | |
| 30-34 | 369 | 2.7 | 1.6 | 0.3 | 26.6 | 1.4 | 2.2 | 4.1 | 52.3 | 3.0 | 3.5 | 0.3 | 0.3 | |
| 35-39 | 398 | 2.0 | 1.0 | 0.8 | 29.4 | 0.8 | 0.8 | 4.8 | 53.5 | 1.5 | 2.3 | 0.0 | 0.8 | |
| 40-44 | 439 | 3.2 | 0.0 | 1.6 | 25.5 | 0.5 | 2.3 | 6.4 | 49.7 | 4.1 | 4.1 | 1.6 | 0.5 | |
| 45-49 | 546 | 3.5 | 0.2 | 1.8 | 17.6 | 0.9 | 3.3 | 5.5 | 52.6 | 4.4 | 8.1 | 0.9 | 0.5 | |
| 50-54 | 547 | 2.6 | 0.0 | 1.6 | 19.0 | 0.7 | 2.6 | 4.6 | 51.0 | 4.9 | 9.9 | 0.9 | 0.5 | |
| 55-59 | 507 | 2.8 | 0.0 | 1.8 | 12.8 | 0.2 | 3.6 | 4.7 | 49.9 | 8.5 | 13.0 | 1.4 | 0.4 | |
| 60-64 | 608 | 4.1 | 0.0 | 2.6 | 10.0 | 0.5 | 3.0 | 3.6 | 51.0 | 10.7 | 11.7 | 1.2 | 0.7 | |
| 65-69 | 864 | 2.8 | 0.0 | 3.2 | 5.1 | 0.6 | 2.0 | 2.3 | 51.4 | 12.7 | 16.9 | 1.7 | 0.2 | |
| 70-74 | 1,172 | 2.8 | 0.0 | 4.8 | 2.4 | 0.3 | 1.3 | 1.6 | 50.7 | 15.5 | 18.3 | 1.1 | 0.5 | |
| 75-79 | 1,638 | 1.7 | 0.0 | 3.4 | 0.2 | 0.2 | 1.0 | 0.7 | 53.7 | 18.1 | 19.0 | 0.5 | 0.4 | |
| 80-84 | 1,951 | 1.4 | 0.0 | 2.9 | 0.1 | 0.3 | 0.9 | 1.1 | 55.2 | 21.3 | 15.7 | 0.5 | 0.4 | |
| 85-89 | 2,110 | 0.6 | 0.0 | 1.8 | 0.1 | 0.6 | 0.7 | 0.7 | 57.9 | 24.1 | 12.5 | 0.4 | 0.4 | |
| 90+ | 1,967 | 0.6 | 0.0 | 1.0 | 0.0 | 1.0 | 0.2 | 0.7 | 59.5 | 28.4 | 7.7 | 0.4 | 0.4 | |
| (再掲)喀痰塗抹陽性肺結核 (Re-count) Sputum smear positive pulmonary TB | | | | | | | | | | | | | | |
| 総数 Total | 5,231 | 1.2 | 0.8 | 1.7 | 4.4 | 0.6 | 0.4 | 0.9 | 62.2 | 16.2 | 9.9 | 0.5 | 0.5 | |
| 0-14 | 0 | - | - | - | - | - | - | - | - | - | - | - | - | |
| 15-19 | 38 | 0.0 | 28.9 | 0.0 | 7.9 | 0.0 | 2.6 | 0.0 | 57.9 | 0.0 | 0.0 | 0.0 | 0.0 | |
| 20-24 | 159 | 0.6 | 13.2 | 0.0 | 18.2 | 0.0 | 1.3 | 2.5 | 56.6 | 2.5 | 1.9 | 0.0 | 0.0 | |
| 25-29 | 137 | 3.6 | 5.8 | 0.7 | 11.7 | 0.7 | 0.7 | 1.5 | 68.6 | 0.7 | 2.2 | 0.7 | 1.5 | |
| 30-34 | 86 | 1.2 | 0.0 | 0.0 | 16.3 | 2.3 | 1.2 | 1.2 | 73.3 | 1.2 | 2.3 | 1.2 | 0.0 | |
| 35-39 | 113 | 1.8 | 0.0 | 1.8 | 24.8 | 1.8 | 0.0 | 0.9 | 66.4 | 0.0 | 0.0 | 0.0 | 0.9 | |
| 40-44 | 136 | 2.2 | 0.0 | 0.7 | 16.2 | 0.7 | 0.0 | 4.4 | 64.7 | 4.4 | 3.7 | 1.5 | 0.0 | |
| 45-49 | 172 | 2.9 | 0.0 | 0.6 | 14.0 | 1.2 | 1.7 | 4.1 | 64.5 | 1.2 | 6.4 | 1.2 | 0.6 | |
| 50-54 | 196 | 1.5 | 0.0 | 1.0 | 18.9 | 1.0 | 0.5 | 1.5 | 63.3 | 3.6 | 5.6 | 0.5 | 1.0 | |
| 55-59 | 168 | 1.8 | 0.0 | 1.2 | 11.3 | 0.6 | 1.2 | 1.8 | 62.5 | 9.5 | 8.3 | 1.8 | 0.0 | |
| 60-64 | 204 | 2.5 | 0.0 | 2.9 | 7.8 | 0.0 | 1.0 | 2.0 | 58.3 | 10.8 | 11.3 | 1.5 | 1.0 | |
| 65-69 | 321 | 1.9 | 0.0 | 2.2 | 4.4 | 0.6 | 0.3 | 0.3 | 62.6 | 13.7 | 12.1 | 1.2 | 0.0 | |
| 70-74 | 422 | 2.1 | 0.0 | 3.3 | 1.4 | 0.0 | 0.0 | 0.7 | 62.3 | 13.7 | 14.7 | 0.7 | 0.7 | |
| 75-79 | 613 | 0.7 | 0.0 | 2.4 | 0.2 | 0.2 | 0.3 | 0.8 | 58.7 | 18.4 | 16.3 | 0.2 | 0.8 | |
| 80-84 | 727 | 1.2 | 0.0 | 2.5 | 0.1 | 0.1 | 0.7 | 0.3 | 59.7 | 21.0 | 13.2 | 0.6 | 0.3 | |
| 85-89 | 868 | 0.5 | 0.0 | 1.6 | 0.0 | 0.5 | 0.1 | 0.5 | 61.8 | 23.6 | 10.5 | 0.1 | 0.6 | |
| 90+ | 871 | 0.2 | 0.0 | 0.9 | 0.0 | 1.1 | 0.1 | 0.3 | 65.1 | 24.8 | 6.8 | 0.2 | 0.3 | |

TB: tuberculosis

*1 有症状: 咳・痰・血痰・喀血等の「呼吸器症状」や、喘鳴、胸痛、背部痛、息切れ、発熱、寝汗、全身倦怠、体重減少等の「その他の症状」を有する場合。

TB symptoms: Respiratory symptoms such as cough, sputum expectoration, bloody sputum, and hemoptysis; and other symptoms such as wheezing, chest pain, back pain, dyspnea, fever, night sweating, fatigue tendency, and weight loss.

旧表改訂 新登録結核患者数、職業・性・年齢階層別、2019年

Previous table Number of newly notified TB patients by occupation, sex and age group, 2019

| 性/年齢 | 総数 | 接客業 | 看護師 /保健 師 | 医師 | 他医療 従事者 | 教員/ 保育士 | 生徒/ 学生 | 他常用 勤労者 | 他臨時 /日雇 | 他自営/ 自由業 | 家事従 事者 | 保育園児/ 幼稚園児/ 他の乳幼児 | 無職/ 他 | 不明 |
|------------------|-------|--------------------|---------------------------------------|--------------------|-----------------------------|--------------------------------|---------------------|-----------------------------|---|-------------------------|------------------|--------------------------------|--------------------|---------|
| Sex/Age group | Total | Service workers | Nurses/P ublic health nurses | Medical doctors | Other medical workers | Teachers/ Nursery nurses | Pupils/St udents | Other regular workers | Other temporar y/daily workers | Other self- employed | Housekee pers | Infants/ Little children | Jobless/ Others | Unknown |
| 男 Male | 8,521 | 189 | 14 | 33 | 70 | 25 | 312 | 1,593 | 289 | 448 | 6 | 5 | 5,384 | 153 |
| 0-14 | 20 | 0 | 0 | 0 | 0 | 0 | 11 | 0 | 0 | 0 | 0 | 5 | 4 | 0 |
| 15-19 | 78 | 2 | 0 | 0 | 1 | 0 | 62 | 4 | 1 | 0 | 0 | 0 | 7 | 1 |
| 20-24 | 384 | 9 | 1 | 0 | 4 | 1 | 163 | 146 | 16 | 1 | 1 | 0 | 34 | 8 |
| 25-29 | 303 | 5 | 3 | 0 | 7 | 0 | 59 | 168 | 15 | 2 | 0 | 0 | 33 | 11 |
| 30-39 | 416 | 32 | 2 | 3 | 17 | 3 | 14 | 234 | 21 | 17 | 1 | 0 | 60 | 12 |
| 40-49 | 573 | 40 | 3 | 4 | 18 | 4 | 3 | 318 | 20 | 57 | 0 | 0 | 99 | 7 |
| 50-59 | 706 | 31 | 3 | 4 | 10 | 5 | 0 | 355 | 41 | 77 | 0 | 0 | 161 | 19 |
| 60-69 | 1,011 | 36 | 1 | 8 | 9 | 9 | 0 | 256 | 78 | 99 | 0 | 0 | 488 | 27 |
| 70-79 | 1,888 | 30 | 1 | 6 | 4 | 3 | 0 | 100 | 89 | 128 | 2 | 0 | 1,484 | 41 |
| 80+ | 3,142 | 4 | 0 | 8 | 0 | 0 | 0 | 12 | 8 | 67 | 2 | 0 | 3,014 | 27 |
| 女 Female | 5,939 | 160 | 138 | 6 | 151 | 34 | 208 | 537 | 161 | 106 | 167 | 12 | 4,163 | 96 |
| 0-14 | 18 | 0 | 0 | 0 | 0 | 0 | 5 | 0 | 0 | 0 | 0 | 12 | 1 | 0 |
| 15-19 | 64 | 2 | 0 | 0 | 0 | 0 | 49 | 5 | 2 | 0 | 0 | 0 | 1 | 0 |
| 20-24 | 234 | 16 | 5 | 0 | 10 | 3 | 92 | 64 | 7 | 0 | 4 | 0 | 29 | 4 |
| 25-29 | 243 | 19 | 11 | 1 | 12 | 5 | 47 | 100 | 7 | 0 | 5 | 0 | 34 | 2 |
| 30-39 | 351 | 34 | 25 | 2 | 20 | 5 | 14 | 111 | 36 | 8 | 25 | 0 | 61 | 10 |
| 40-49 | 412 | 36 | 42 | 1 | 44 | 8 | 0 | 111 | 27 | 17 | 33 | 0 | 80 | 13 |
| 50-59 | 348 | 24 | 33 | 2 | 40 | 8 | 0 | 84 | 28 | 12 | 15 | 0 | 90 | 12 |
| 60-69 | 461 | 19 | 19 | 0 | 21 | 5 | 1 | 44 | 29 | 26 | 35 | 0 | 251 | 11 |
| 70-79 | 922 | 7 | 3 | 0 | 3 | 0 | 0 | 16 | 22 | 29 | 28 | 0 | 793 | 21 |
| 80+ | 2,886 | 3 | 0 | 0 | 1 | 0 | 0 | 2 | 3 | 14 | 22 | 0 | 2,819 | 22 |

旧表 職業別、20～59歳新登録肺結核患者の発見方法別割合、2019年

Previous table Proportion of mode of detection among newly notified pulmonary TB patients aged 20-59 years by occupation, 2019

| | 肺結核 Pulmonary TB patients | 個別健診 Individual medical checkup | 定期健診 Mass screening | | | 接触者健診 Contact examination | | 医療機関 Clinics/Hospitals | | | その他/ 不明 Others/Un known |
|---|---------------------------------|--|------------------------|---------------------|-------------------------------------|------------------------------|---------------|--|-------------------------------|-------------------------------|----------------------------------|
| | | | 住民 Residents | 職場 Employe es | 学校/施 設 Schools/F acilities | 家族 Family | その他 Others | 有症状 受診(*2) Outpatient s with TB symptoms | 入院中 with other diseases | 通院中 with other diseases | |
| | | | | | | | | | | | |
| 総数 Total | 3,210 | 2.9 | 1.2 | 25.0 | 6.2 | 2.6 | 6.8 | 44.6 | 2.8 | 4.9 | 3.1 |
| 接客業 Service workers | 194 | 1.0 | 2.1 | 24.7 | 0.5 | 1.0 | 2.6 | 58.8 | 2.6 | 3.1 | 3.6 |
| 医療関係者 Medical workers(*1) | 275 | 1.8 | 0.4 | 30.5 | 0.7 | 1.8 | 18.5 | 39.6 | 0.7 | 3.6 | 2.2 |
| 教員・保育士 Teachers/ Nursery nurses | 30 | 3.3 | 6.7 | 33.3 | 0.0 | 3.3 | 10.0 | 40.0 | 3.3 | 0.0 | 0.0 |
| 学生 Students | 350 | 2.9 | 0.3 | 2.9 | 47.4 | 0.6 | 10.6 | 29.4 | 0.9 | 0.9 | 4.3 |
| 他の常用勤労者 Other regular workers | 1,386 | 2.5 | 0.4 | 39.8 | 0.3 | 2.3 | 5.2 | 40.7 | 2.7 | 4.5 | 1.7 |
| 他の臨時・日雇 Other temporary/ daily workers | 168 | 1.2 | 1.8 | 20.8 | 1.2 | 2.4 | 5.4 | 53.0 | 2.4 | 6.5 | 5.4 |
| 他の自営自由業 Other self-employed | 154 | 5.2 | 4.5 | 10.4 | 0.0 | 1.9 | 1.3 | 63.6 | 2.6 | 9.7 | 0.6 |
| 家事 Housekeepers | 58 | 6.9 | 6.9 | 5.2 | 0.0 | 13.8 | 0.0 | 58.6 | 1.7 | 5.2 | 1.7 |
| 無職 Jobless/ Others | 527 | 4.4 | 1.9 | 7.6 | 4.4 | 4.6 | 7.0 | 50.3 | 5.9 | 8.7 | 5.3 |
| 不明 Unknown | 68 | 4.4 | 1.5 | 8.8 | 2.9 | 2.9 | 1.5 | 64.7 | 1.5 | 1.5 | 10.3 |

*1 医療関係者：看護師・保健師・助産師，医師，その他医療職含む。

Medical workers include nurses, public health nurses, medical doctors and dentists, physical therapists, occupational therapists, medical technologists, radiographers, and co-medicals.

*2 有症状：咳・痰・血痰・喀血等の「呼吸器症状」や，喘鳴，胸痛，背部痛，息切れ，発熱，寝汗，全身倦怠，体重減少等の「その他の症状」を有する場合。
TB symptoms: Respiratory symptoms such as cough, sputum expectoration, bloody sputum, and hemoptysis; and other symptoms such as wheezing, chest pain, back pain, dyspnea, fever, night sweating, fatigue tendency, and weight loss.

【診斷時病狀】

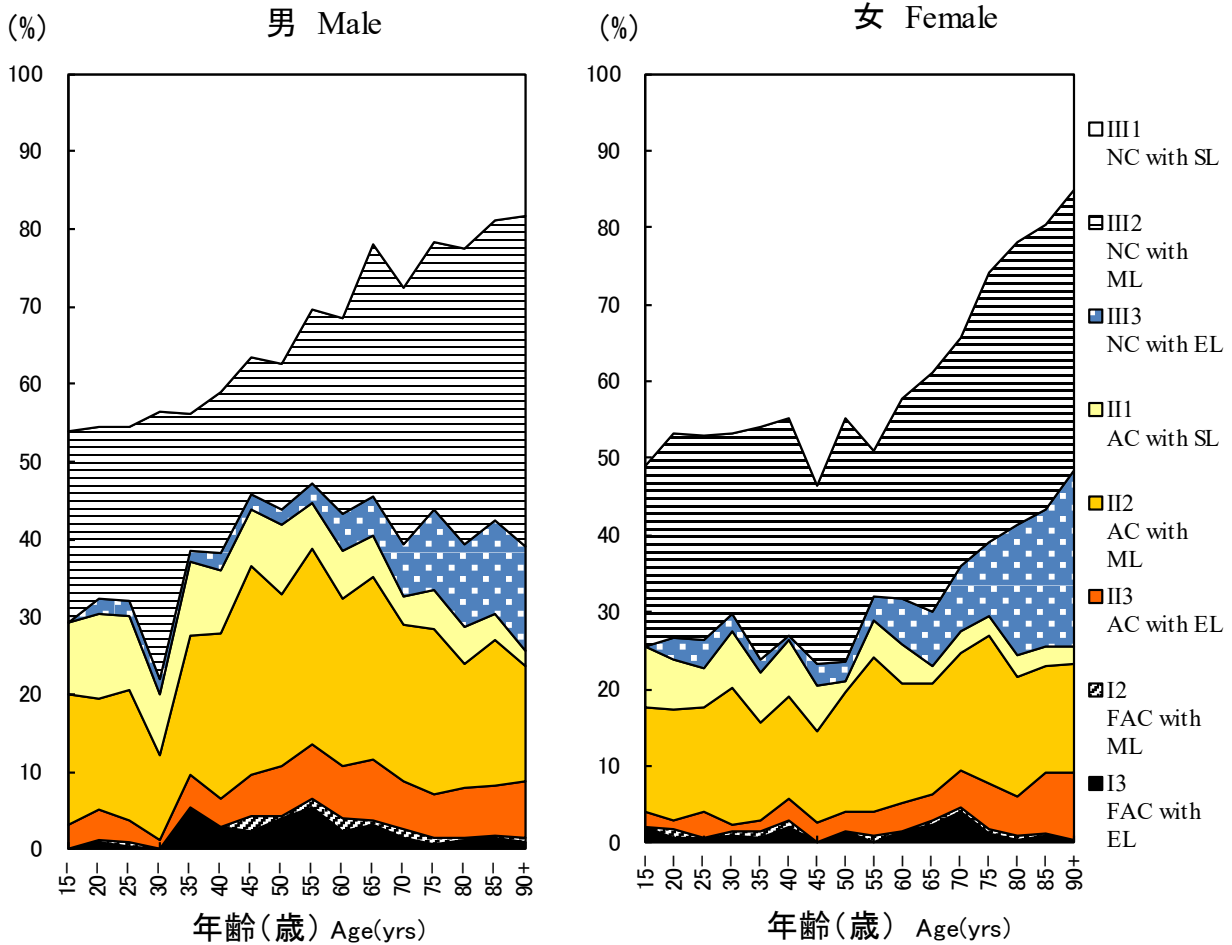


图 3 新登録肺結核患者中胸部X線写真学会分類別所見割合，性・年齢5 歳階級別，2019

Fig.3 Proportion of cases classified by X-ray classification by sex and 5-yearage group, 2019

NC : Non-cavitory SL : Slight lesion AC : Advanced cavitory ML : Moderate lesion

FAC: Far-advance cavitory EL : Extensive lesion

表2 新登録結核患者中「HIV合併あり」と報告された患者数、性・年齢階層別、2018年および2007～2019年
 Table 2 Number of newly notified tuberculosis patients with HIV infection, by sex and age group, 2019 and 2007-2019

| 年齢階層 Age group | 喀痰塗抹陽性 Sputum smear positive | | 他結核菌陽性 Other bacteriologic ally- positive | | 菌陰性結核 Bacteriologically- negative | | 肺外結核 Extra-pulmonary | | 総数 Total | |
|-------------------|---------------------------------|---------|---|---------|---|--------|-------------------------|---------|-------------|----------|
| | 男 M | 女 F | 男 M | 女 F | 男 M | 女 F | 男 M | 女 F | 男 M | 女 F |
| 2019年 | 2019 Calendar year | | | | | | | | | |
| 総計 Total | 9 (4) | 2 (2) | 5 (2) | 1 | 3 (2) | 1 (1) | 6 (2) | 2 (2) | 23 (10) | 6 (5) |
| 0-19 | 0 | 0 | 0 | 0 | 0 | 0 | 0 | 0 | 0 | 0 |
| 20-24 | 2 (2) | 0 | 0 | 0 | 0 | 0 | 0 | 0 | 2 (2) | 0 |
| 25-29 | 0 | 1 (1) | 0 | 0 | 0 | 0 | 1 (1) | 0 | 1 (1) | 1 (1) |
| 30-34 | 0 | 0 | 1 (1) | 0 | 0 | 0 | 1 | 0 | 2 (1) | 0 |
| 35-39 | 0 | 0 | 2 | 0 | 2 (2) | 1 (1) | 1 (1) | 0 | 5 (3) | 1 (1) |
| 40-44 | 3 (1) | 1 (1) | 0 | 0 | 1 | 0 | 0 | 1 (1) | 4 (1) | 2 (2) |
| 45-49 | 1 (1) | 0 | 1 | 0 | 0 | 0 | 0 | 0 | 2 (1) | 0 |
| 50-54 | 0 | 0 | 0 | 0 | 0 | 0 | 1 | 0 | 1 | 0 |
| 55-59 | 1 | 0 | 1 (1) | 0 | 0 | 0 | 1 | 1 (1) | 3 (1) | 1 (1) |
| 60-64 | 2 | 0 | 0 | 0 | 0 | 0 | 1 | 0 | 3 | 0 |
| 65-69 | 0 | 0 | 0 | 0 | 0 | 0 | 0 | 0 | 0 | 0 |
| 70-74 | 0 | 0 | 0 | 1 | 0 | 0 | 0 | 0 | 0 | 1 |
| 75-79 | 0 | 0 | 0 | 0 | 0 | 0 | 0 | 0 | 0 | 0 |
| 80+ | 0 | 0 | 0 | 0 | 0 | 0 | 0 | 0 | 0 | 0 |
| 2007～2019年 | 2007-2019 Calendar year | | | | | | | | | |
| 総計 Total | 183 (23) | 45 (22) | 102 (25) | 16 (10) | 48 (10) | 11 (8) | 215 (44) | 32 (18) | 548 (102) | 104 (58) |
| 0-19 | 1 (1) | 0 | 0 | 0 | 1 (1) | 0 | 2 | 0 | 4 (2) | 0 |
| 20-24 | 8 (6) | 0 | 4 (3) | 0 | 1 (1) | 1 (1) | 2 (1) | 1 | 15 (11) | 2 (1) |
| 25-29 | 10 (5) | 7 (6) | 2 (1) | 1 (1) | 1 (1) | 2 (2) | 14 (4) | 1 (1) | 27 (11) | 11 (10) |
| 30-34 | 13 (3) | 5 (5) | 13 (2) | 4 (3) | 4 (2) | 1 (1) | 28 (10) | 5 (3) | 58 (17) | 15 (12) |
| 35-39 | 25 (2) | 4 (3) | 21 (6) | 3 (3) | 8 (2) | 3 (3) | 36 (9) | 6 (5) | 90 (19) | 16 (14) |
| 40-44 | 32 (2) | 7 (5) | 16 (5) | 0 | 9 (2) | 3 (1) | 44 (14) | 8 (6) | 101 (23) | 18 (12) |
| 45-49 | 18 (2) | 3 (3) | 13 (5) | 1 (1) | 6 (1) | 0 | 35 (5) | 2 | 72 (13) | 6 (4) |
| 50-54 | 14 (1) | 1 | 12 (2) | 2 (1) | 5 | 0 | 16 (1) | 0 | 47 (4) | 3 (1) |
| 55-59 | 10 | 0 | 5 (1) | 0 | 4 | 0 | 11 | 3 (3) | 30 (1) | 3 (3) |
| 60-64 | 19 | 1 | 6 | 1 (1) | 3 | 0 | 8 | 0 | 36 | 2 (1) |
| 65-69 | 10 | 0 | 5 | 0 | 4 | 0 | 10 | 1 | 29 | 1 |
| 70-74 | 6 (1) | 3 | 2 | 2 | 1 | 0 | 4 | 2 | 13 (1) | 7 |
| 75-79 | 6 | 1 | 0 | 0 | 1 | 0 | 3 | 2 | 10 | 3 |
| 80+ | 11 | 13 | 3 | 2 | 0 | 1 | 2 | 1 | 16 | 17 |

(): 外国人患者の再掲 Re-count of foreigners

HIV : Human Immunodeficiency Virus. M : male patients, F : female patients.

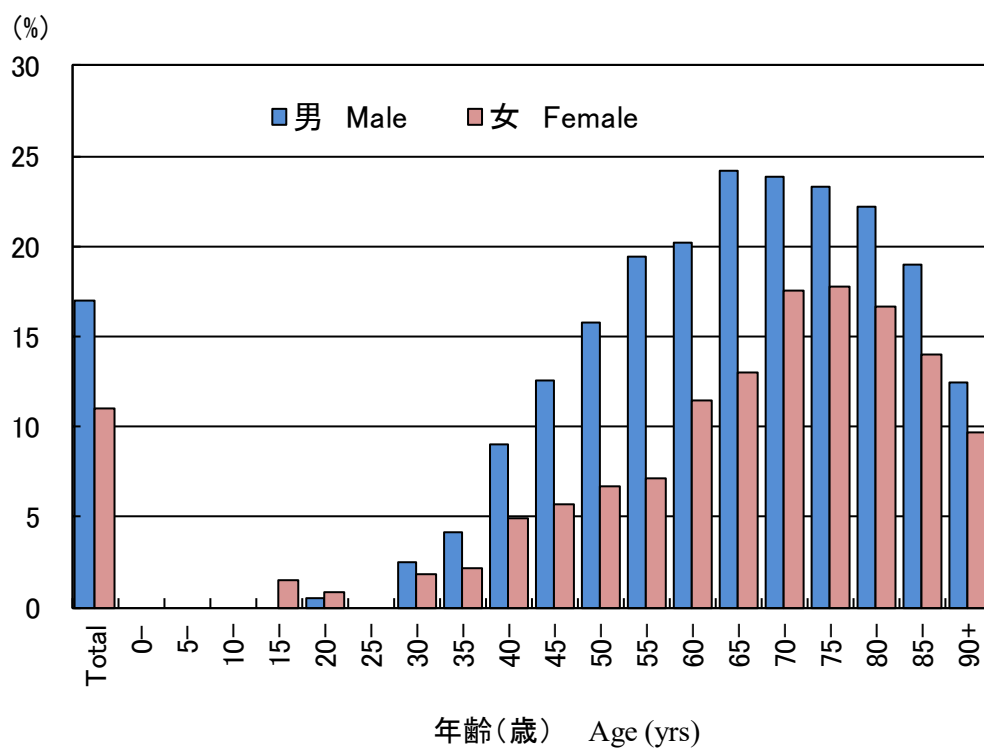


図 4 新登録結核患者中「糖尿病合併あり」と報告された患者の割合、性・年齢階層別、2019年
 Fig.4 Proportion of newly notified tuberculosis patients with diabetes mellitus in each age-group by sex, 2019

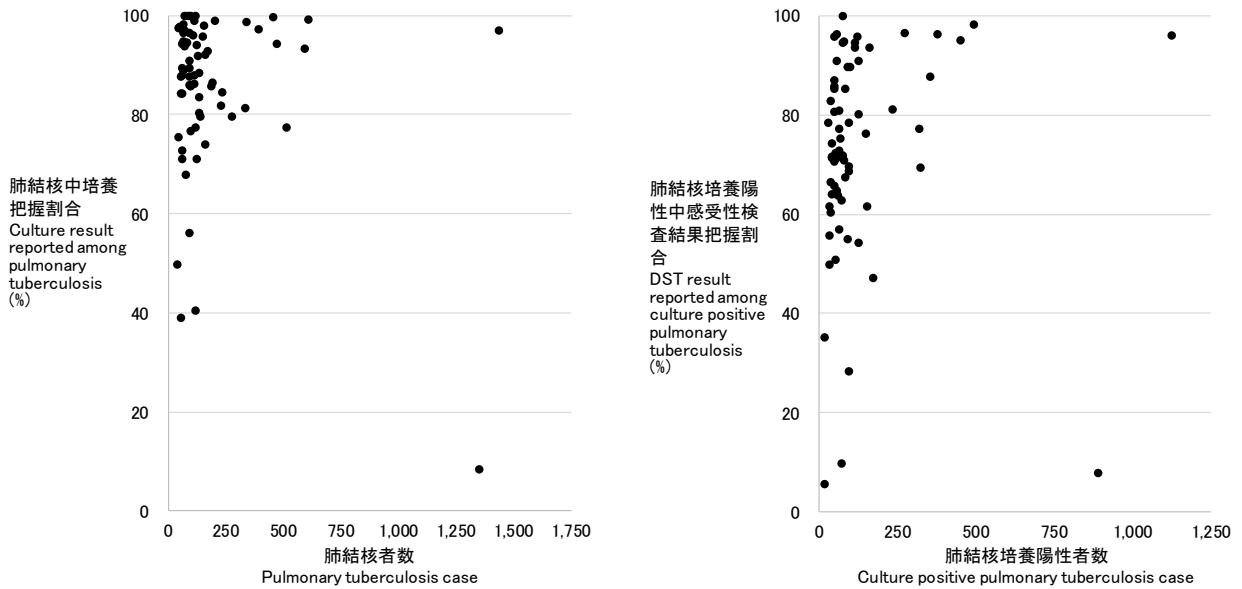
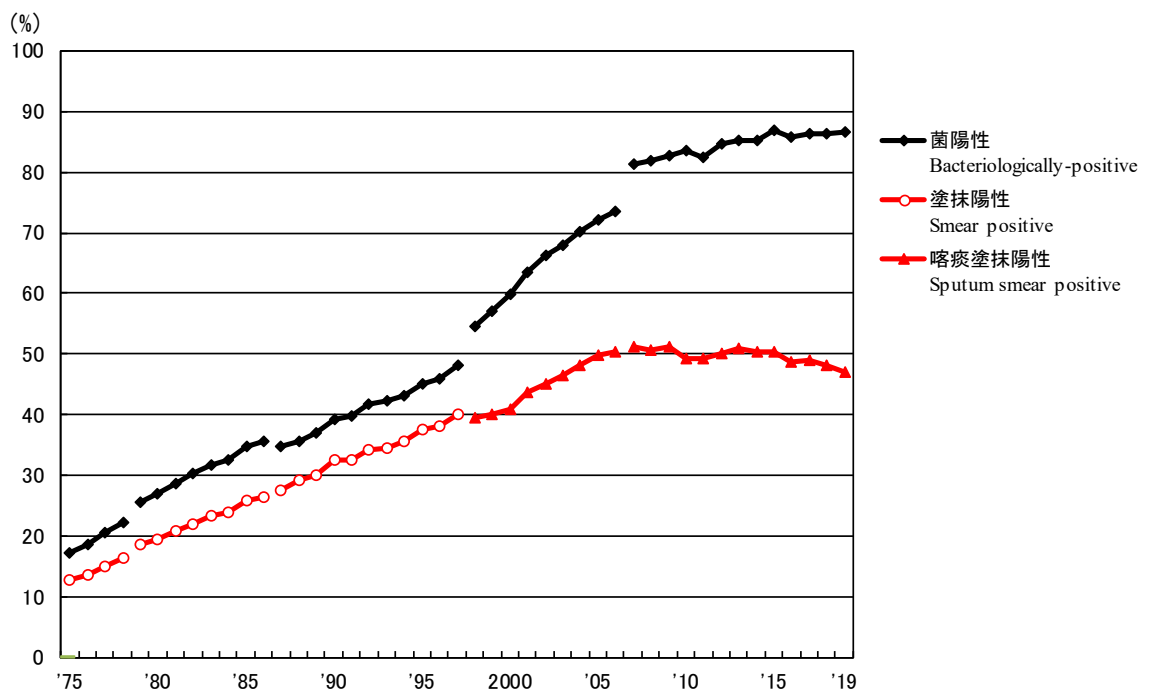


図 5 新登録肺結核患者数とその内培養把握割合の散布図(左)、及び新登録肺結核培養陽性者数とその内感受性検査結果

把握割合の散布図(右)、都道府県政令指定都市別、2019年

Fig. 5 Scatter plot of culture results reported among pulmonary tuberculosis patients and anti-tuberculosis drug susceptibility test results among newly notified pulmonary tuberculosis patients, by prefecture and major city, 2019



旧 図 新登録肺結核患者中菌陽性割合の推移、1975～2019年

Previous Fig

Proportion of bacteriologically confirmed cases among newly notified pulmonary tuberculosis patients, 1975-2019

資料と対象 Sources of information and subjects:

結核登録者の定期報告 Annual tuberculosis reports from public health centers

1975-1978: 全結核 All forms of tuberculosis

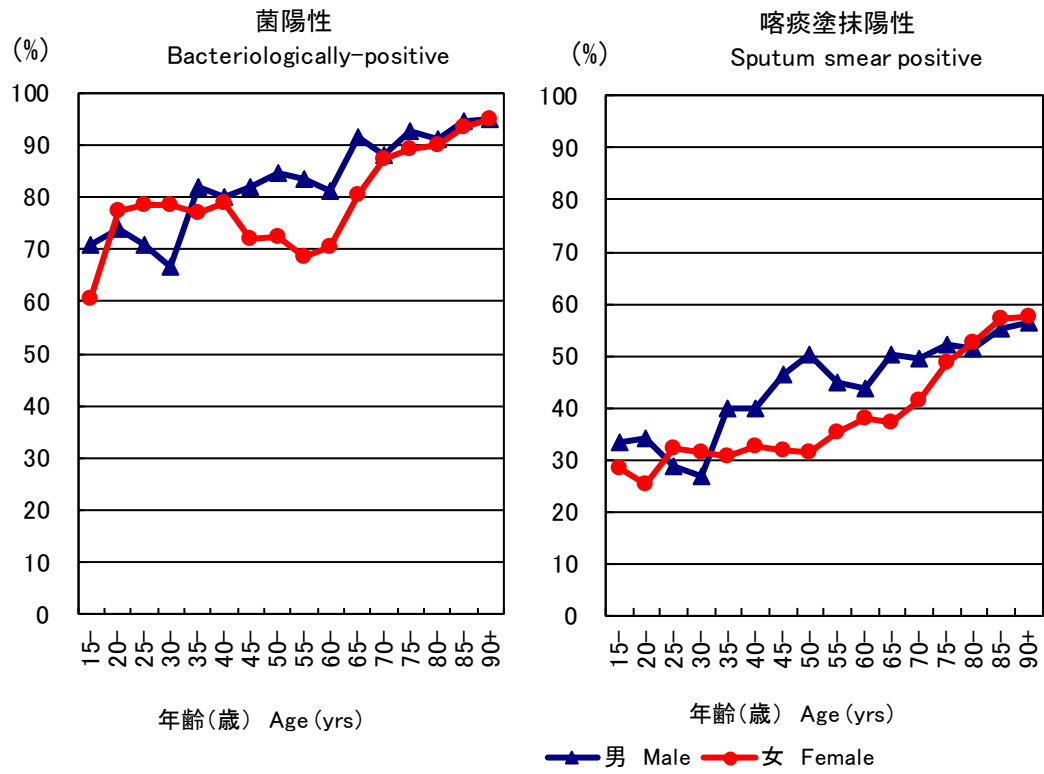
1979-1986: 肺結核 Pulmonary tuberculosis

電算化結核サーベイランスシステム Nationwide computerized tuberculosis surveillance system

1987-1997: 肺結核 Pulmonary Tuberculosis

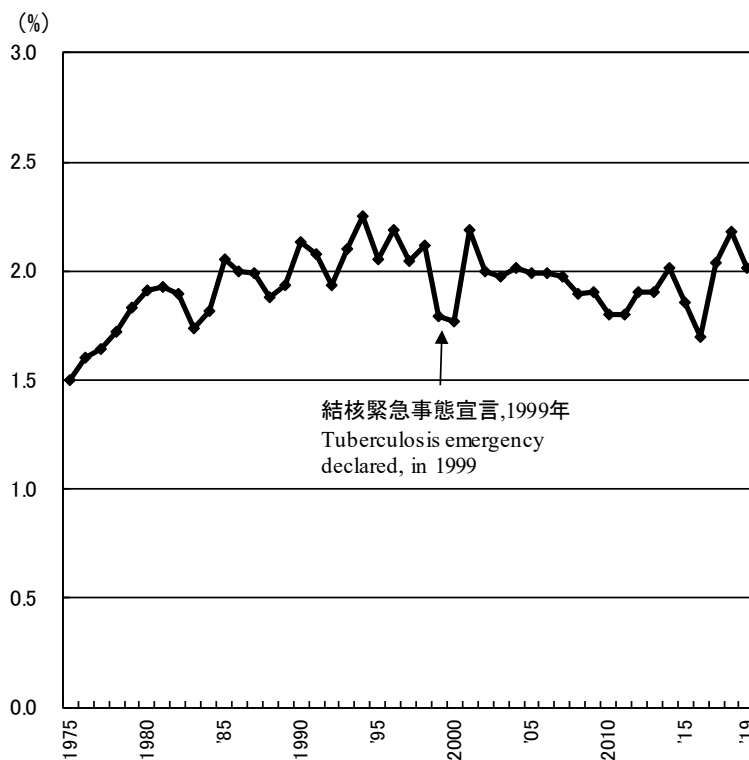
1998-2006: 肺結核(活動性分類の変更) Pulmonary tuberculosis (New patient criteria for notification were applied)

2007-2009: 肺結核(核酸増幅法項目の追加) Pulmonary tuberculosis (Item of nucleic acid amplification was added)



旧 図 新登録肺結核患者中菌陽性割合、性・年齢5歳階級別、2019年
Previous Fig.

Proportion of bacteriologically confirmed cases among newly notified pulmonary tuberculosis patients by sex and 5-year age group, 2019



旧 図 新登録肺結核患者中胸部X線写真での広汎空洞型割合の推移、1975~2019年

Previous Fig. Proportion of far-advanced cavitory cases among newly notified pulmonary Tuberculosis patients, 1975-2019

旧表 性・職業別、30～59歳新登録肺結核患者中有空洞あるいは／かつ喀痰塗抹陽性の割合、2019年

Previous table Proportion of cavitory or/and sputum smear positive cases among newly notified pulmonary TB patients aged 30-59 years, 2019

| | 男 Male | | | | | | | 女 Female | | | | | | |
|---|------------------------|---|------|-------|--|------|-------|------------------------|---|------|-------|--|------|-------|
| | 肺結核 Pulmonary TB | 有空洞あるいは 喀痰塗抹陽性 Cavitory or sputum smear(+) | | | 有空洞かつ 喀痰塗抹陽性 Cavitory and sputum smear(+) | | | 肺結核 Pulmonary TB | 有空洞あるいは 喀痰塗抹陽性 Cavitory or sputum smear(+) | | | 有空洞かつ 喀痰塗抹陽性 Cavitory and sputum smear(+) | | |
| | | n | % | Ratio | n | % | Ratio | | n | % | Ratio | n | % | Ratio |
| 接客業 Service workers | 89 | 53 | 59.6 | 1.6 | 30 | 33.7 | 2.3 | 70 | 37 | 52.9 | 1.6 | 19 | 27.1 | 4.7 |
| 医療職 Medical workers | 55 | 21 | 38.2 | 1.0 | 8 | 14.5 | 1.0 | 174 | 56 | 32.2 | 1.0 | 10 | 5.7 | 1.0 |
| 教員・保育士 Teachers/ Nursery nurses | 8 | 4 | 50.0 | 1.3 | 0 | 0.0 | 0.0 | 16 | 7 | 43.8 | 1.4 | 5 | 31.3 | 5.4 |
| 他の常用勤労者 Other regular workers | 765 | 371 | 48.5 | 1.3 | 153 | 20.0 | 1.4 | 230 | 88 | 38.3 | 1.2 | 33 | 14.3 | 2.5 |
| 他の臨時・日雇 Other temporary/ daily workers | 70 | 50 | 71.4 | 1.9 | 31 | 44.3 | 3.0 | 64 | 30 | 46.9 | 1.5 | 9 | 14.1 | 2.4 |
| 他の自営自由 Other self- employed | 123 | 81 | 65.9 | 1.7 | 47 | 38.2 | 2.6 | 28 | 11 | 39.3 | 1.2 | 5 | 17.9 | 3.1 |
| 無職 Jobless | 234 | 160 | 68.4 | 1.8 | 84 | 35.9 | 2.5 | 133 | 59 | 44.4 | 1.4 | 20 | 15.0 | 2.6 |
| その他 Others | 78 | 34 | 43.6 | 1.1 | 11 | 14.1 | 1.0 | 106 | 43 | 40.6 | 1.3 | 19 | 17.9 | 3.1 |
| 総数 Total | 1,422 | 774 | 54.4 | | 364 | 25.6 | | 821 | 331 | 40.3 | | 120 | 14.6 | |

その他:家事、学生、不明 Others:Houskeepers/ Students/ Unknown

Ratio: 医療職の割合に対するその他職業の割合の比 The ratio of each proportion to that of medical workers

旧表 新登録肺結核患者の薬剤感受性検査結果、性・年齢別、2019年および2007～2019年

Previous table Drug susceptibility test results among newly notified pulmonary tuberculosis patients, by sex and age group, 2019 and 2007-2019

| 年齢 Age group | 総数 Total | | | | | | | | | | 初回治療(再掲) New treatment (Re-count) | | | | | | | | | |
|---------------------------------------|--------------------------------|-------------|-----------------------------|-----------------------------|---------------------------|--------------------------------|-------------|-----------------------------|-----------------------------|---------------------------|-----------------------------------|-------------|-----------------------------|-----------------------------|---------------------------|--------------------------------|-------------|-----------------------------|-----------------------------|---------------------------|
| | 男 Male | | | | | 女 Female | | | | | 男 Male | | | | 女 Female | | | | | |
| | 感受性結果把握 DST result obtained | 多剤耐性 MDR | INH耐性 Any INH resistance | RFP耐性 Any RFP resistance | 1剤以上耐性* Any resistance | 感受性結果把握 DST result obtained | 多剤耐性 MDR | INH耐性 Any INH resistance | RFP耐性 Any RFP resistance | 1剤以上耐性* Any resistance | 感受性結果把握 DST result obtained | 多剤耐性 MDR | INH耐性 Any INH resistance | RFP耐性 Any RFP resistance | 1剤以上耐性* Any resistance | 感受性結果把握 DST result obtained | 多剤耐性 MDR | INH耐性 Any INH resistance | RFP耐性 Any RFP resistance | 1剤以上耐性* Any resistance |
| 2019年 2019 Calendar year | | | | | | | | | | | | | | | | | | | | |
| 総数 Total | 4,140 | 22 | 224 | 41 | 476 | 2,518 | 22 | 135 | 24 | 243 | 3,894 | 18 | 201 | 34 | 437 | 2,394 | 17 | 118 | 18 | 219 |
| 0-19 | 42 | 1 | 6 | 1 | 9 | 23 | 1 | 4 | 1 | 4 | 42 | 1 | 6 | 1 | 9 | 23 | 1 | 4 | 1 | 4 |
| 20-29 | 303 | 9 | 36 | 11 | 56 | 198 | 5 | 21 | 5 | 36 | 292 | 9 | 35 | 11 | 55 | 192 | 4 | 19 | 4 | 33 |
| 30-39 | 191 | 2 | 11 | 4 | 34 | 145 | 3 | 14 | 3 | 22 | 182 | 1 | 10 | 3 | 33 | 140 | 2 | 13 | 2 | 20 |
| 40-49 | 287 | 0 | 14 | 1 | 33 | 160 | 1 | 9 | 1 | 16 | 271 | 0 | 14 | 1 | 32 | 149 | 1 | 7 | 1 | 13 |
| 50-59 | 370 | 3 | 25 | 5 | 50 | 120 | 1 | 3 | 1 | 10 | 350 | 1 | 23 | 3 | 47 | 116 | 1 | 2 | 1 | 9 |
| 60-69 | 529 | 3 | 24 | 8 | 68 | 180 | 2 | 13 | 3 | 21 | 497 | 3 | 23 | 7 | 65 | 171 | 2 | 10 | 2 | 17 |
| 70-79 | 901 | 0 | 44 | 5 | 100 | 387 | 4 | 23 | 5 | 41 | 842 | 0 | 38 | 4 | 89 | 361 | 2 | 19 | 3 | 36 |
| 80+ | 1,517 | 4 | 64 | 6 | 126 | 1,305 | 5 | 48 | 5 | 93 | 1,418 | 3 | 52 | 4 | 107 | 1,242 | 4 | 44 | 4 | 87 |
| 2007～2019年 2007-2019 Calendar year | | | | | | | | | | | | | | | | | | | | |
| 総数 Total | 60,518 | 437 | 3,080 | 653 | 7,053 | 32,507 | 256 | 1,477 | 340 | 3,230 | 55,307 | 290 | 2,558 | 446 | 6,184 | 30,637 | 167 | 1,230 | 234 | 2,865 |
| 0-19 | 473 | 11 | 46 | 13 | 95 | 380 | 3 | 34 | 4 | 73 | 454 | 8 | 43 | 10 | 92 | 361 | 3 | 32 | 4 | 68 |
| 20-29 | 3,254 | 72 | 273 | 92 | 571 | 2,712 | 70 | 222 | 90 | 461 | 3,113 | 56 | 245 | 71 | 533 | 2,598 | 50 | 195 | 66 | 422 |
| 30-39 | 3,488 | 32 | 230 | 50 | 545 | 2,682 | 44 | 195 | 57 | 394 | 3,306 | 25 | 216 | 43 | 515 | 2,580 | 34 | 175 | 43 | 361 |
| 40-49 | 4,710 | 39 | 255 | 63 | 632 | 2,311 | 22 | 116 | 32 | 280 | 4,424 | 29 | 230 | 45 | 572 | 2,195 | 14 | 102 | 23 | 255 |
| 50-59 | 6,550 | 59 | 370 | 98 | 940 | 1,907 | 24 | 96 | 34 | 219 | 6,092 | 34 | 321 | 63 | 848 | 1,798 | 10 | 73 | 19 | 190 |
| 60-69 | 10,206 | 65 | 532 | 117 | 1,323 | 2,819 | 20 | 144 | 26 | 334 | 9,372 | 45 | 443 | 80 | 1,155 | 2,652 | 14 | 115 | 18 | 290 |
| 70-79 | 13,099 | 85 | 676 | 121 | 1,553 | 5,695 | 30 | 247 | 39 | 567 | 11,818 | 45 | 521 | 69 | 1,316 | 5,292 | 14 | 204 | 20 | 501 |
| 80+ | 18,738 | 74 | 698 | 99 | 1,394 | 14,001 | 43 | 423 | 58 | 902 | 16,728 | 48 | 539 | 65 | 1,153 | 13,161 | 28 | 334 | 41 | 778 |
| 2007～2019年 2007-2019 Calendar year | | | | | | | | | | | | | | | | | | | | |
| 総数 Total | 100% | 0.7 | 5.1 | 1.1 | 11.7 | 100% | 0.8 | 4.5 | 1.0 | 9.9 | 100% | 0.5 | 4.6 | 0.8 | 11.2 | 100% | 0.5 | 4.0 | 0.8 | 9.4 |
| 0-19 | 100 | 2.3 | 9.7 | 2.7 | 20.1 | 100 | 0.8 | 8.9 | 1.1 | 19.2 | 100 | 1.8 | 9.5 | 2.2 | 20.3 | 100 | 0.8 | 8.9 | 1.1 | 18.8 |
| 20-29 | 100 | 2.2 | 8.4 | 2.8 | 17.5 | 100 | 2.6 | 8.2 | 3.3 | 17.0 | 100 | 1.8 | 7.9 | 2.3 | 17.1 | 100 | 1.9 | 7.5 | 2.5 | 16.2 |
| 30-39 | 100 | 0.9 | 6.6 | 1.4 | 15.6 | 100 | 1.6 | 7.3 | 2.1 | 14.7 | 100 | 0.8 | 6.5 | 1.3 | 15.6 | 100 | 1.3 | 6.8 | 1.7 | 14.0 |
| 40-49 | 100 | 0.8 | 5.4 | 1.3 | 13.4 | 100 | 1.0 | 5.0 | 1.4 | 12.1 | 100 | 0.7 | 5.2 | 1.0 | 12.9 | 100 | 0.6 | 4.6 | 1.0 | 11.6 |
| 50-59 | 100 | 0.9 | 5.6 | 1.5 | 14.4 | 100 | 1.3 | 5.0 | 1.8 | 11.5 | 100 | 0.6 | 5.3 | 1.0 | 13.9 | 100 | 0.6 | 4.1 | 1.1 | 10.6 |
| 60-69 | 100 | 0.6 | 5.2 | 1.1 | 13.0 | 100 | 0.7 | 5.1 | 0.9 | 11.8 | 100 | 0.5 | 4.7 | 0.9 | 12.3 | 100 | 0.5 | 4.3 | 0.7 | 10.9 |
| 70-79 | 100 | 0.6 | 5.2 | 0.9 | 11.9 | 100 | 0.5 | 4.3 | 0.7 | 10.0 | 100 | 0.4 | 4.4 | 0.6 | 11.1 | 100 | 0.3 | 3.9 | 0.4 | 9.5 |
| 80+ | 100 | 0.4 | 3.7 | 0.5 | 7.4 | 100 | 0.3 | 3.0 | 0.4 | 6.4 | 100 | 0.3 | 3.2 | 0.4 | 6.9 | 100 | 0.2 | 2.5 | 0.3 | 5.9 |

DST: Drug susceptibility test. MDR: Multi-drug resistance, i.e., resistant to at least INH and RFP.

INH: Isoniazid. RFP: Rifampicin.

*: 2012年以降はINH, RFP, SM EBの4剤のうちのいずれかに耐性

旧表 新登録肺結核患者の薬剤感受性検査結果および耐性率、性・年齢別、2007～2019年（再掲；外国人）

Previous table Drug susceptibility test results among newly notified pulmonary tuberculosis patients, by sex and age group, 2007-2019 (Re-count of foreigners)

| 年齢 Age group | 総数 Total | | | | | | | | | | 初回治療(再掲) New treatment (Re-count) | | | | | | | | | |
|-----------------|---------------------------------------|-------------|-----------------------------------|-----------------------------------|------------------------------|---------------------------------------|-------------|-----------------------------------|-----------------------------------|------------------------------|---------------------------------------|-------------|-----------------------------------|-----------------------------------|------------------------------|---------------------------------------|-------------|-----------------------------------|-----------------------------------|------------------------------|
| | 男 Male | | | | | 女 Female | | | | | 男 Male | | | | | 女 Female | | | | |
| | 感受性結果 把握 DST result obtained | 多剤耐性 MDR | INH耐性 Any INH resistance | RFP耐性 Any RFP resistance | 1剤以上耐性* Any resistance | 感受性結果 把握 DST result obtained | 多剤耐性 MDR | INH耐性 Any INH resistance | RFP耐性 Any RFP resistance | 1剤以上耐性* Any resistance | 感受性結果 把握 DST result obtained | 多剤耐性 MDR | INH耐性 Any INH resistance | RFP耐性 Any RFP resistance | 1剤以上耐性* Any resistance | 感受性結果 把握 DST result obtained | 多剤耐性 MDR | INH耐性 Any INH resistance | RFP耐性 Any RFP resistance | 1剤以上耐性* Any resistance |
| 2007～2019年 | 2007-2019 Calendar year | | | | | | | | | | | | | | | | | | | |
| 総数 Total | 2488 | 95 | 294 | 117 | 472 | 2491 | 109 | 312 | 133 | 494 | 2368 | 68 | 256 | 88 | 428 | 2373 | 83 | 275 | 102 | 443 |
| 0-19 | 151 | 10 | 32 | 12 | 48 | 94 | 2 | 13 | 3 | 17 | 146 | 7 | 29 | 9 | 45 | 91 | 2 | 12 | 3 | 16 |
| 20-29 | 1,343 | 63 | 172 | 77 | 269 | 1,159 | 61 | 153 | 76 | 257 | 1,289 | 48 | 150 | 59 | 245 | 1,118 | 46 | 134 | 58 | 232 |
| 30-39 | 406 | 13 | 40 | 18 | 68 | 614 | 26 | 92 | 29 | 127 | 387 | 11 | 38 | 16 | 64 | 587 | 20 | 84 | 22 | 117 |
| 40-49 | 196 | 5 | 17 | 6 | 32 | 312 | 7 | 23 | 9 | 44 | 183 | 1 | 12 | 1 | 25 | 291 | 4 | 20 | 5 | 38 |
| 50-59 | 130 | 1 | 6 | 1 | 12 | 142 | 6 | 19 | 8 | 27 | 124 | 0 | 5 | 0 | 11 | 128 | 5 | 14 | 7 | 20 |
| 60-69 | 114 | 3 | 15 | 3 | 26 | 67 | 3 | 7 | 4 | 10 | 104 | 3 | 13 | 3 | 24 | 64 | 3 | 7 | 4 | 10 |
| 70-79 | 73 | 0 | 7 | 0 | 8 | 43 | 4 | 5 | 4 | 7 | 66 | 0 | 5 | 0 | 6 | 37 | 3 | 4 | 3 | 5 |
| 80+ | 75 | 0 | 5 | 0 | 9 | 60 | 0 | 0 | 0 | 5 | 69 | 0 | 4 | 0 | 8 | 57 | 0 | 0 | 0 | 5 |
| 2007～2019年 | 2007-2019 Calendar year | | | | | | | | | | | | | | | | | | | |
| 総数 Total | 100% | 3.8 | 11.8 | 4.7 | 19.0 | 100% | 4.4 | 12.5 | 5.3 | 19.8 | 100% | 2.9 | 10.8 | 3.7 | 18.1 | 100% | 3.5 | 11.6 | 4.3 | 18.7 |
| 0-19 | 100 | 6.6 | 21.2 | 7.9 | 31.8 | 100 | 2.1 | 13.8 | 3.2 | 18.1 | 100 | 4.8 | 19.9 | 6.2 | 30.8 | 100 | 2.2 | 13.2 | 3.3 | 17.6 |
| 20-29 | 100 | 4.7 | 12.8 | 5.7 | 20.0 | 100 | 5.3 | 13.2 | 6.6 | 22.2 | 100 | 3.7 | 11.6 | 4.6 | 19.0 | 100 | 4.1 | 12.0 | 5.2 | 20.8 |
| 30-39 | 100 | 3.2 | 9.9 | 4.4 | 16.7 | 100 | 4.2 | 15.0 | 4.7 | 20.7 | 100 | 2.8 | 9.8 | 4.1 | 16.5 | 100 | 3.4 | 14.3 | 3.7 | 19.9 |
| 40-49 | 100 | 2.6 | 8.7 | 3.1 | 16.3 | 100 | 2.2 | 7.4 | 2.9 | 14.1 | 100 | 0.5 | 6.6 | 0.5 | 13.7 | 100 | 1.4 | 6.9 | 1.7 | 13.1 |
| 50-59 | 100 | 0.8 | 4.6 | 0.8 | 9.2 | 100 | 4.2 | 13.4 | 5.6 | 19.0 | 100 | 0.0 | 4.0 | 0.0 | 8.9 | 100 | 3.9 | 10.9 | 5.5 | 15.6 |
| 60-69 | 100 | 2.6 | 13.2 | 2.6 | 22.8 | 100 | 4.5 | 10.4 | 6.0 | 14.9 | 100 | 2.9 | 12.5 | 2.9 | 23.1 | 100 | 4.7 | 10.9 | 6.3 | 15.6 |
| 70-79 | 100 | 0.0 | 9.6 | 0.0 | 11.0 | 100 | 9.3 | 11.6 | 9.3 | 16.3 | 100 | 0.0 | 7.6 | 0.0 | 9.1 | 100 | 8.1 | 10.8 | 8.1 | 13.5 |
| 80+ | 100 | 0.0 | 6.7 | 0.0 | 12.0 | 100 | 0.0 | 0.0 | 0.0 | 8.3 | 100 | 0.0 | 5.8 | 0.0 | 11.6 | 100 | 0.0 | 0.0 | 0.0 | 8.8 |

DST: Drug susceptibility test. MDR: Multi-drug resistance, i.e., resistant to at least INH and RFP. INH: Isoniazid. RFP: Rifampicin.

*: 2012年はINH, RFP, SM EBの4剤のうちのいずれかに耐性