

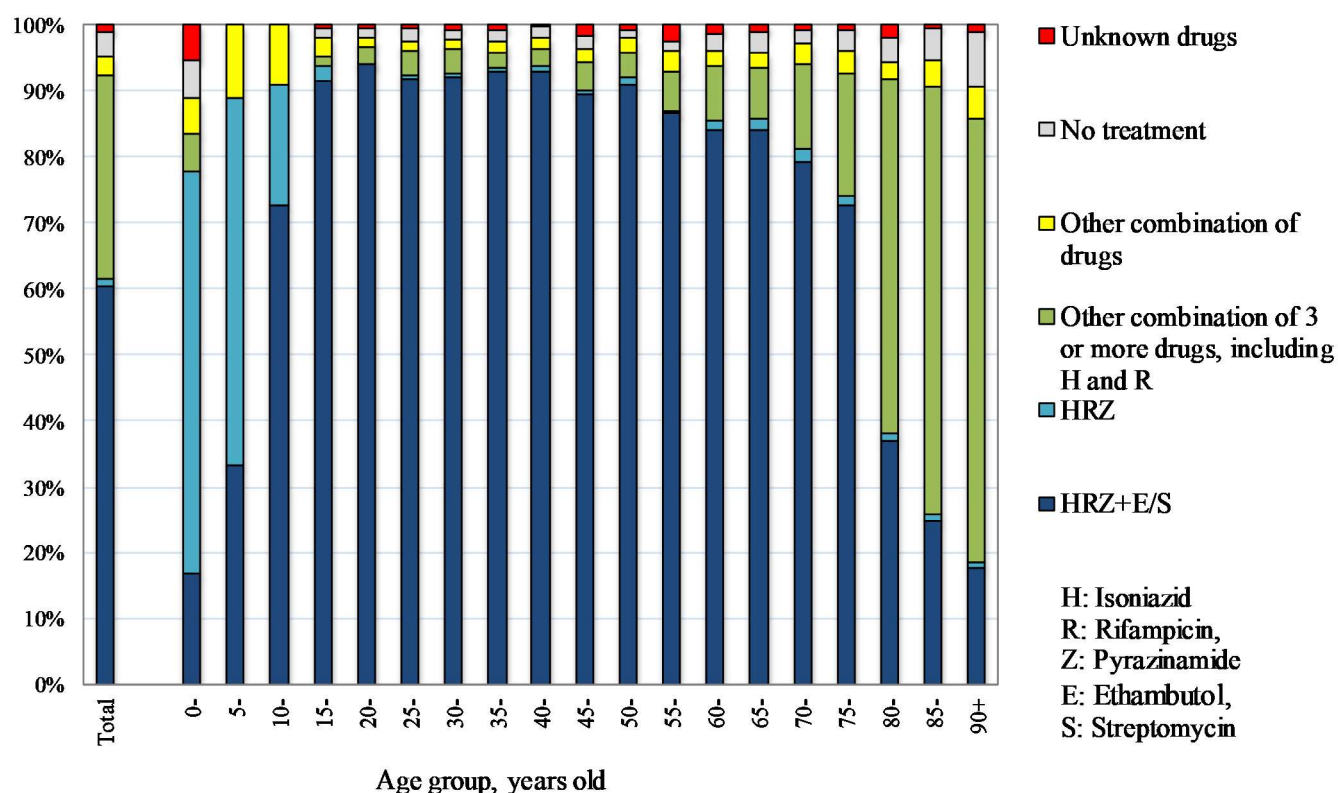
【Treatment 1】

Table 1 Number of patients with TB on re-treatment, by year when previous TB treatment was initiated and age group, 2019

Year when previous TB treatment initiated	Total	Age group (years)								Previous TB treatment regimen unknown (re-count)
		0-19	20-29	30-39	40-49	50-59	60-69	70-79	80+	
Total	667	3	35	37	56	71	87	154	224	187
~1949	27	0	0	0	0	0	0	2	25	22
1950-59	80	0	0	0	0	0	0	19	61	46
1960-69	42	0	0	0	0	0	3	16	23	26
1970-79	24	0	0	0	1	0	10	9	4	14
1980-89	21	0	0	0	0	4	7	4	6	15
1990-99	35	0	0	1	4	8	7	6	9	21
2000-09	67	0	3	4	15	9	13	13	10	11
2010-19	371	3	32	32	36	50	47	85	86	31
2010-2019 (re-count)										
2010	13	0	1	1	2	3	3	1	2	1
2011	12	0	0	0	6	0	0	3	3	2
2012	19	0	1	3	1	5	2	3	4	3
2013	20	0	1	3	4	3	3	5	1	3
2014	20	0	3	3	4	0	2	4	4	3
2015	34	0	4	3	2	3	7	7	8	5
2016	60	0	7	4	5	9	5	15	15	7
2017	82	2	4	5	5	13	9	21	23	4
2018	83	0	8	8	7	9	10	19	22	3
2019	28	1	3	2	0	5	6	7	4	0

TB: tuberculosis

Fig.1 Anti-tuberculosis drugs upon notification by age group in 2019



Previous table Number of retreatment tuberculosis patients by previous tuberculosis treatment regimen and age group, 2019

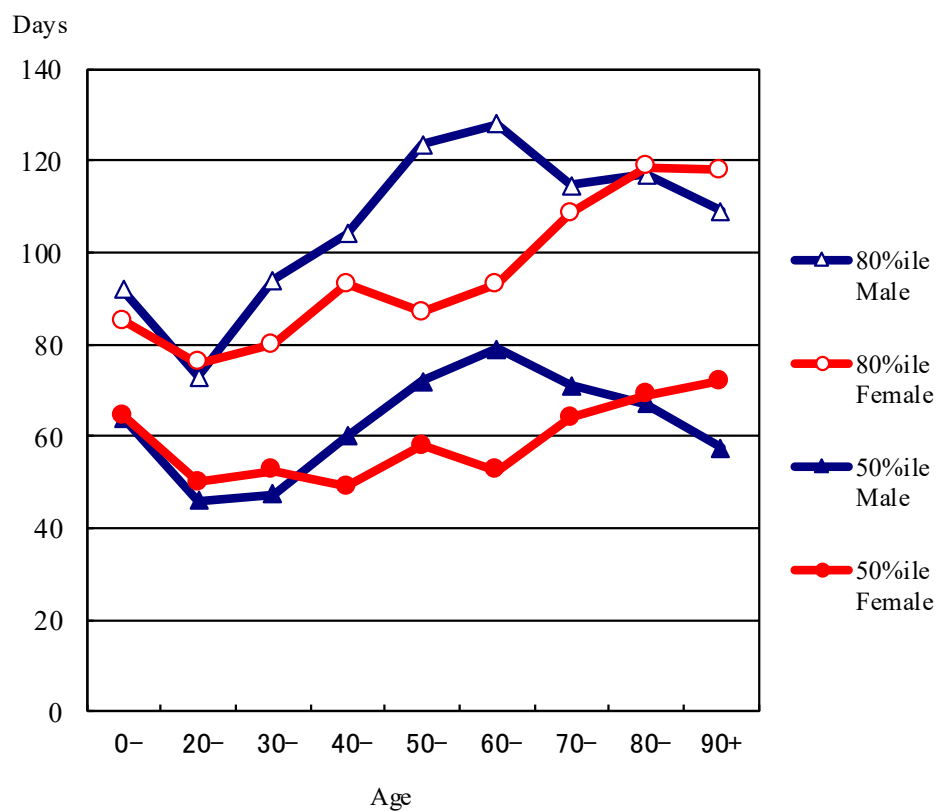
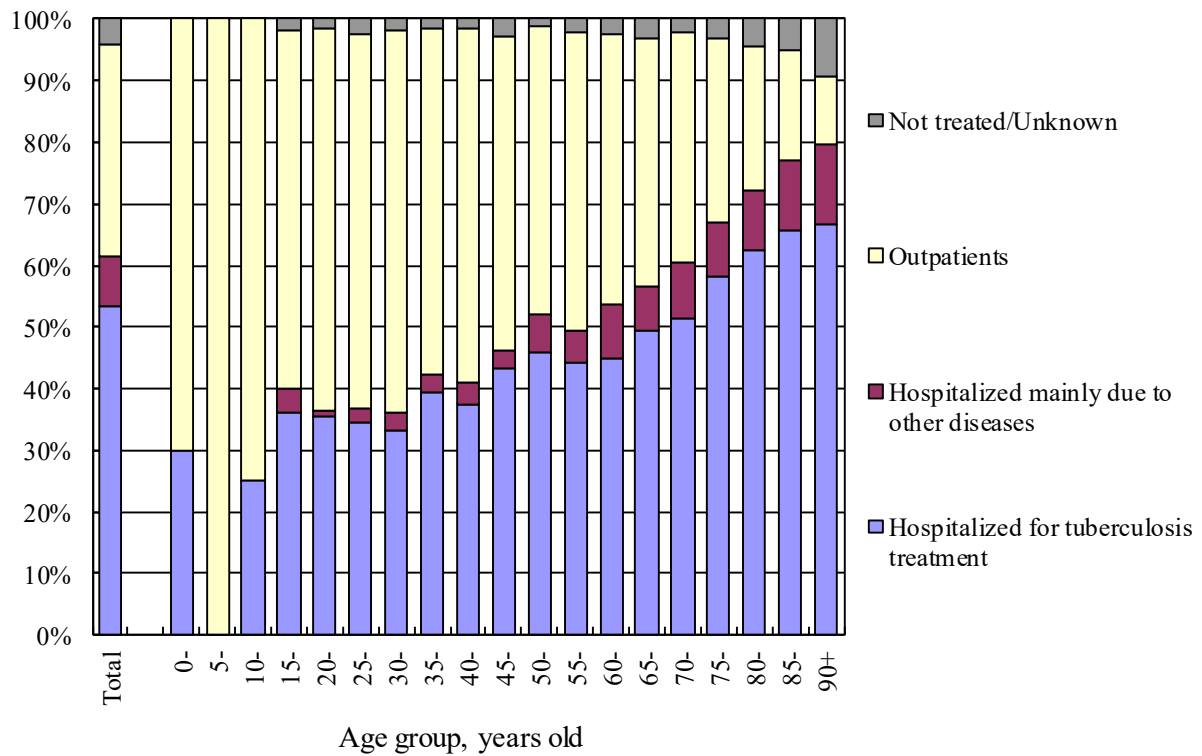
Age group	Retreatment	Previous treatment regimen				
		Regimen with HRZ	Other regimen with HR	Other regimen	LTBI treatment	Unknown
総数 Total	667	221	115	71	73	187
0-4	0	0	0	0	0	0
5-9	0	0	0	0	0	0
10-14	0	0	0	0	0	0
15-19	3	1	0	0	2	0
20-24	18	7	0	1	5	5
25-29	17	4	0	0	8	5
30-34	13	5	0	1	4	3
35-39	24	15	3	0	4	2
40-44	21	11	1	1	3	5
45-49	35	16	6	1	8	4
50-54	36	22	2	2	6	4
55-59	35	17	4	1	5	8
60-64	41	19	5	4	5	8
65-69	46	18	10	2	6	10
70-74	63	26	10	7	4	16
75-79	91	24	15	18	9	25
80-84	72	19	18	9	0	26
85-89	87	10	24	11	2	40
90+	65	7	17	13	2	26

H : Isoniazid, R : Rifampicin, Z : Pyrazinamide

LTBI : Latent Tuberculosis Infection

## 【Treatment 2】

Fig.2 Proportion of the outpatients and the hospitalized patients by age group in 2019(N=11,094)



Previous Fig. Median (50 percentile) and 80 percentile of duration of hospitalization among those hospitalized with tuberculosis and with known discharged day, new sputum-smear positive pulmonary tuberculosis patients in 2018 by sex and age group

Previous table Proportion (%) hospitalized among newly notified tuberculosis patients in 2019 by age group and patient classification

Age	Pulmonary TB								Extra-pulmonary	
	Total		Sputum smear positive		Other bacillary positive		Bacillary negative /unknown			
	Ht	Ho	Ht	Ho	Ht	Ho	Ht	Ho	Ht	Ho
Total	53.4	8.2	90.2	2.4	24.7	14.3	8.7	10.5	31.0	21.7
0-19	33.3	3.4	89.5	0.0	18.4	6.1	10.0	3.3	33.3	3.0
20-29	35.1	1.7	92.2	0.3	13.6	3.5	3.3	0.0	17.3	10.7
30-39	36.4	2.9	87.9	0.5	16.0	4.5	4.1	3.4	17.1	13.8
40-49	40.5	3.2	88.0	1.0	14.6	5.4	1.8	3.0	14.9	12.3
50-59	45.1	5.8	89.6	1.9	13.4	9.4	6.6	7.8	18.5	17.1
60-69	47.5	7.9	88.8	2.1	17.4	13.0	5.4	11.4	20.5	19.5
70-79	55.3	8.8	90.4	2.9	24.0	14.7	8.5	14.7	27.7	21.2
80-89	64.1	10.8	91.7	2.4	33.8	19.9	20.3	24.3	40.1	24.6
90+	66.5	13.2	88.9	4.0	38.0	24.4	28.6	32.5	45.0	32.0

Ht: Hospitalized for tuberculosis treatment

Ho: Hospitalized mainly due to other diseases

## 【Treatment Outcomes】

Table 2 Patients deleted from tuberculosis registration by the end of years (in 2018 and in 2019)  
- Patients with tuberculosis patients and LTBI notified in the previous years (in 2017 and in 2018, respectively) -

	Newly notified patients with tuberculosis												Patients with LTBI (Not included in the total) (%)			
	Patients with pulmonary tuberculosis										Patients with extra-pulmonary tuberculosis (%)					
	Total (%)		Sub-total (pulmonary tuberculosis) (%)		Sputum-smear positive		Other bacteriologically positive (%)		Bacteriologically negative and others (%)							
					New (%)	Re-treatment (%)										
Newly notified tuberculosis cases in 2017*	16,702	(100)	12,973	(100)	6,030	(100)	331	(100)	4,887	(100)	1,725	(100)	3,729	(100)	7,239	(100)
Total number of patients deleted from tuberculosis registration by the end of 2018	5,427	(32.5)	4,247	(32.7)	2,279	(37.8)	104	(31.4)	1,469	(30.1)	395	(22.9)	1,180	(31.6)	3,817	(52.7)
No need for post-treatment follow-up	44	(0.3)	18	(0.1)	5	(0.1)	1	(0.3)	9	(0.2)	3	(0.2)	26	(0.7)	3,150	(43.5)
Died	4,261	(25.5)	3,314	(25.5)	1,902	(31.5)	82	(24.8)	1,125	(23.0)	205	(11.9)	947	(25.4)	244	(3.4)
Tuberculosis-related death	1,322	(7.9)	1,077	(8.3)	810	(13.4)	23	(6.9)	211	(4.3)	33	(1.9)	245	(6.6)	2	(0.0)
Other causes of death	2,939	(17.6)	2,237	(17.2)	1,092	(18.1)	59	(17.8)	914	(18.7)	172	(10.0)	702	(18.8)	242	(3.3)
Transfer out	1,017	(6.1)	825	(6.4)	333	(5.5)	13	(3.9)	309	(6.3)	170	(9.9)	192	(5.1)	324	(4.5)
Register during follow-up	80	(0.5)	69	(0.5)	34	(0.6)	6	(1.8)	20	(0.4)	9	(0.5)	11	(0.3)	49	(0.7)
Other reasons	25	(0.1)	21	(0.2)	5	(0.1)	2	(0.6)	6	(0.1)	8	(0.5)	4	(0.1)	50	(0.7)
Newly notified tuberculosis cases in 2018**	15,527	(100)	11,996	(100)	5,505	(100)	305	(100)	4,601	(100)	1,585	(100)	3,531	(100)	7,406	(100)
Total number of patients deleted from tuberculosis registration by the end of 2019	5,222	(33.6)	4,111	(34.3)	2,181	(39.6)	111	(36.4)	1,445	(31.4)	374	(23.6)	1,111	(31.5)	4,186	(56.5)
No need for post-treatment follow-up	59	(0.4)	39	(0.3)	12	(0.2)	3	(1.0)	14	(0.3)	10	(0.6)	20	(0.6)	3465	(46.8)
Died	4,011	(25.8)	3,120	(26.0)	1,776	(32.3)	84	(27.5)	1,095	(23.8)	165	(10.4)	891	(25.2)	221	(3.0)
Tuberculosis-related death	1,243	(8.0)	1,002	(8.4)	747	(13.6)	35	(11.5)	198	(4.3)	22	(1.4)	241	(6.8)	1	(0.0)
Other causes of death	2,768	(17.8)	2,118	(17.7)	1029	(18.7)	49	(16.1)	897	(19.5)	143	(9.0)	650	(18.4)	220	(3.0)
Transfer out	1,072	(6.9)	887	(7.4)	361	(6.6)	20	(6.6)	315	(6.8)	191	(12.1)	185	(5.2)	388	(5.2)
Register during follow-up	63	(0.4)	53	(0.4)	28	(0.5)	3	(1.0)	17	(0.4)	5	(0.3)	10	(0.3)	42	(0.6)
Other reasons	17	(0.1)	12	(0.1)	4	(0.1)	1	(0.3)	4	(0.1)	3	(0.2)	5	(0.1)	70	(0.9)

\* Based on the annual report database in 2018. \*\* Based on the annual report database in 2019.

LTBI : Latent Tuberculosis Infection

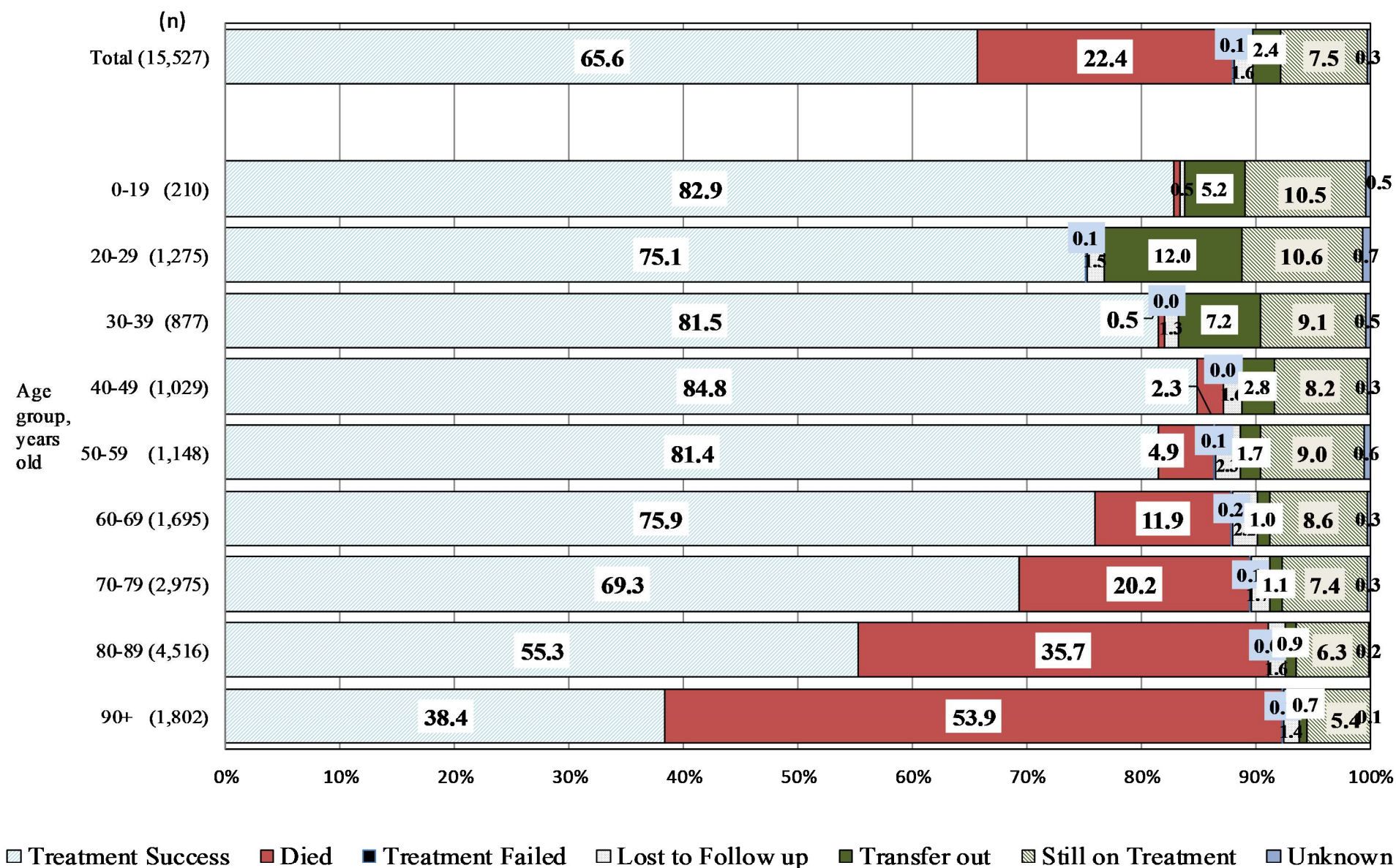


Fig. 3 Treatment outcomes of newly notified tuberculosis patients by age group, 2018 year cohort (%)

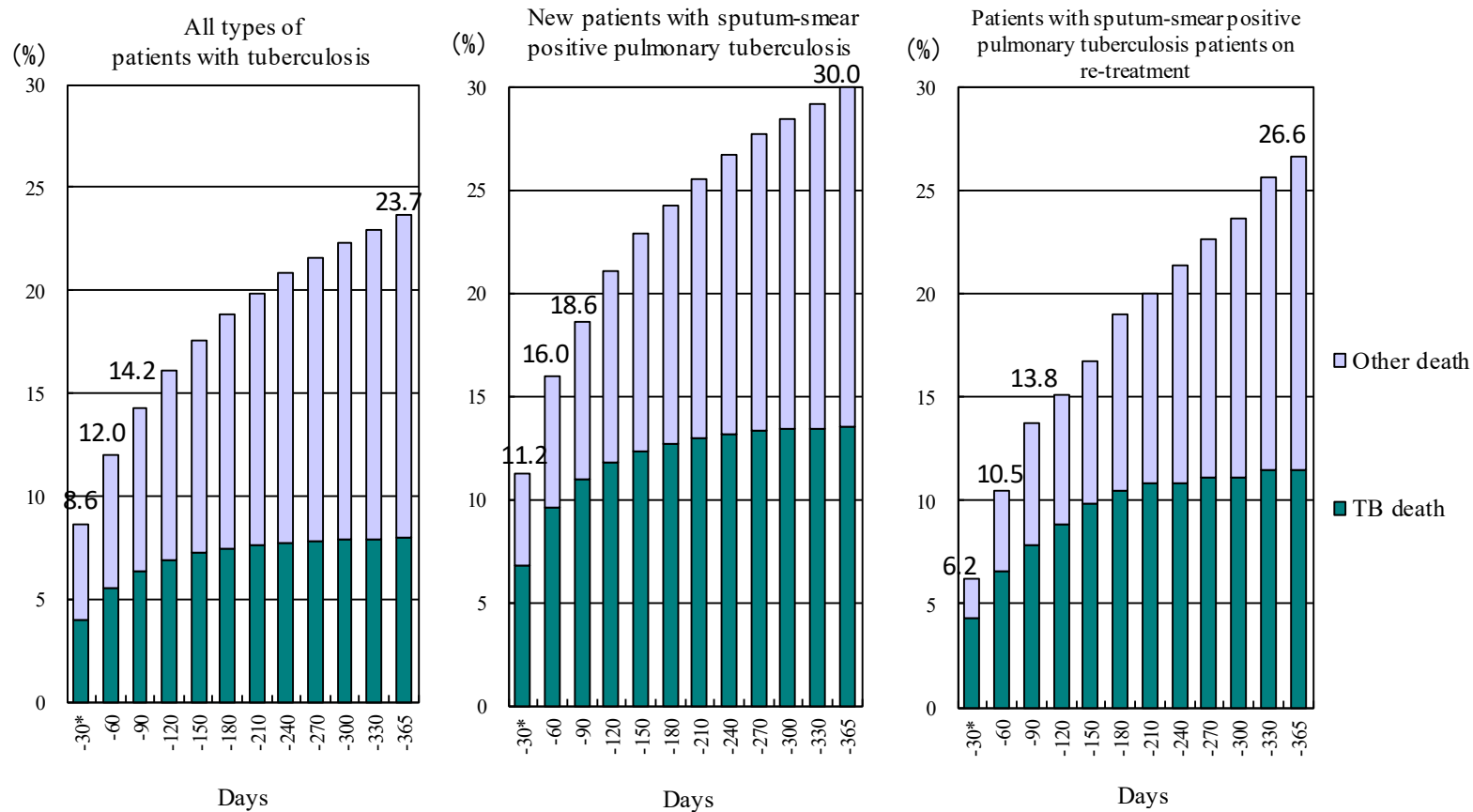


Fig. 4 Cumulative proportion of deaths by duration of treatment - Newly notified patients with tuberculosis in 2018

\* Includes patients who died before the commencement of treatment.

TB: tuberculosis