

【Case finding】

Table 1 Proportion of mode of detection among newly notified tuberculosis patients, 2007–2020

Year	Newly notified TB patients <i>n</i>	Individual medical checkup <i>n</i> %		Mass screening								Contact examination				Medical institutions						Others		Unknown	
				Schools		Residents		Employees		Facilities		Family		Others		Outpatients with TB symptoms(*1)		Inpatients with other diseases		Outpatients with other diseases					
				<i>n</i>	%	<i>n</i>	%	<i>n</i>	%	<i>n</i>	%	<i>n</i>	%	<i>n</i>	%	<i>n</i>	%	<i>n</i>	%	<i>n</i>	%				
2007	25,311	537	2.1	217	0.9	636	2.5	1,931	7.6	145	0.6	355	1.4	370	1.5	16,997	67.2	2,031	8.0	1,611	6.4	340	1.3	141	0.6
2008	24,760	639	2.6	195	0.8	486	2.0	1,877	7.6	144	0.6	325	1.3	410	1.7	15,347	62.0	2,681	10.8	2,100	8.5	316	1.3	240	1.0
2009	24,170	611	2.5	197	0.8	550	2.3	1,749	7.2	136	0.6	324	1.3	311	1.3	14,864	61.5	2,752	11.4	2,220	9.2	301	1.2	155	0.6
2010	23,261	507	2.2	244	1.0	544	2.3	1,618	7.0	128	0.6	313	1.3	350	1.5	13,901	59.8	2,792	12.0	2,305	9.9	333	1.4	226	1.0
2011	22,681	470	2.1	188	0.8	497	2.2	1,531	6.8	126	0.6	354	1.6	482	2.1	13,177	58.1	2,916	12.9	2,515	11.1	330	1.5	95	0.4
2012	21,283	409	1.9	163	0.8	498	2.3	1,424	6.7	121	0.6	315	1.5	374	1.8	12,284	57.7	2,941	13.8	2,312	10.9	357	1.7	85	0.4
2013	20,495	413	2.0	172	0.8	455	2.2	1,246	6.1	89	0.4	314	1.5	333	1.6	11,978	58.4	2,745	13.4	2,306	11.3	336	1.6	108	0.5
2014	19,615	344	1.8	201	1.0	404	2.1	1,221	6.2	92	0.5	303	1.5	333	1.7	11,441	58.3	2,591	13.2	2,210	11.3	328	1.7	147	0.7
2015	18,280	319	1.7	192	1.1	359	2.0	1,147	6.3	78	0.4	248	1.4	263	1.4	10,556	57.7	2,630	14.4	2,043	11.2	144	0.8	127	0.7
2016	17,625	319	1.8	250	1.4	355	2.0	1,056	6.0	98	0.6	211	1.2	409	2.3	10,073	57.2	2,471	14.0	1,971	11.2	146	0.8	98	0.6
2017	16,789	331	2.0	259	1.5	336	2.0	1,088	6.5	70	0.4	256	1.5	323	1.9	9,338	55.6	2,528	15.1	1,900	11.3	150	0.9	73	0.4
2018	15,590	290	1.9	226	1.4	288	1.8	1,077	6.9	74	0.5	239	1.5	314	2.0	8,617	55.3	2,317	14.9	1,798	11.5	139	0.9	56	0.4
2019	14,460	278	1.9	226	1.6	314	2.2	983	6.8	76	0.5	210	1.5	358	2.5	7,746	53.6	2,288	15.8	1,690	11.7	104	0.7	62	0.4
2020	12,739	207	1.6	80	0.6	203	1.6	787	6.2	34	0.3	190	1.5	199	1.6	7,096	55.7	2,102	16.5	1,583	12.4	124	1.0	50	0.4
2020																									
Age group																									
0~9	36	0	0.0	0	0.0	0	0.0	0	0.0	0	0.0	18	50.0	1	2.8	10	27.8	1	2.8	1	2.8	5	13.9	0	0.0
10~19	91	1	1.1	9	9.9	0	0.0	7	7.7	0	0.0	15	16.5	5	5.5	47	51.6	2	2.2	2	2.2	1	1.1	0	0.0
20~29	1,027	20	1.9	65	6.3	3	0.3	244	23.8	3	0.3	12	1.2	43	4.2	578	56.3	14	1.4	22	2.1	4	0.4	7	0.7
30~39	686	15	2.2	6	0.9	1	0.1	162	23.6	3	0.4	12	1.7	21	3.1	396	57.7	23	3.4	37	5.4	6	0.9	1	0.1
40~49	741	25	3.4	0	0.0	8	1.1	126	17.0	0	0.0	18	2.4	27	3.6	428	57.8	39	5.3	57	7.7	5	0.7	5	0.7
50~59	924	28	3.0	0	0.0	14	1.5	135	14.6	3	0.3	29	3.1	24	2.6	511	55.3	62	6.7	100	10.8	8	0.9	3	0.3
60~69	1,262	34	2.7	0	0.0	36	2.9	77	6.1	4	0.3	25	2.0	33	2.6	656	52.0	142	11.3	209	16.6	25	2.0	7	0.6
70~79	2,547	44	1.7	0	0.0	77	3.0	35	1.4	7	0.3	36	1.4	19	0.7	1,357	53.3	440	17.3	471	18.5	33	1.3	5	0.2
80~89	3,686	31	0.8	0	0.0	50	1.4	1	0.0	8	0.2	20	0.5	15	0.4	2,099	56.9	873	23.7	536	14.5	25	0.7	15	0.4
90~	1,739	9	0.5	0	0.0	14	0.8	0	0.0	6	0.3	5	0.3	11	0.6	1,014	58.3	506	29.1	148	8.5	12	0.7	7	0.4

TB: tuberculosis

TB symptoms: Respiratory symptoms such as cough, sputum expectoration, bloody sputum, and hemoptysis; and other symptoms such as wheezing, chest pain, back pain, dyspnea, fever, night sweating, fatigue tendency, fatigue tendency, and weight loss.

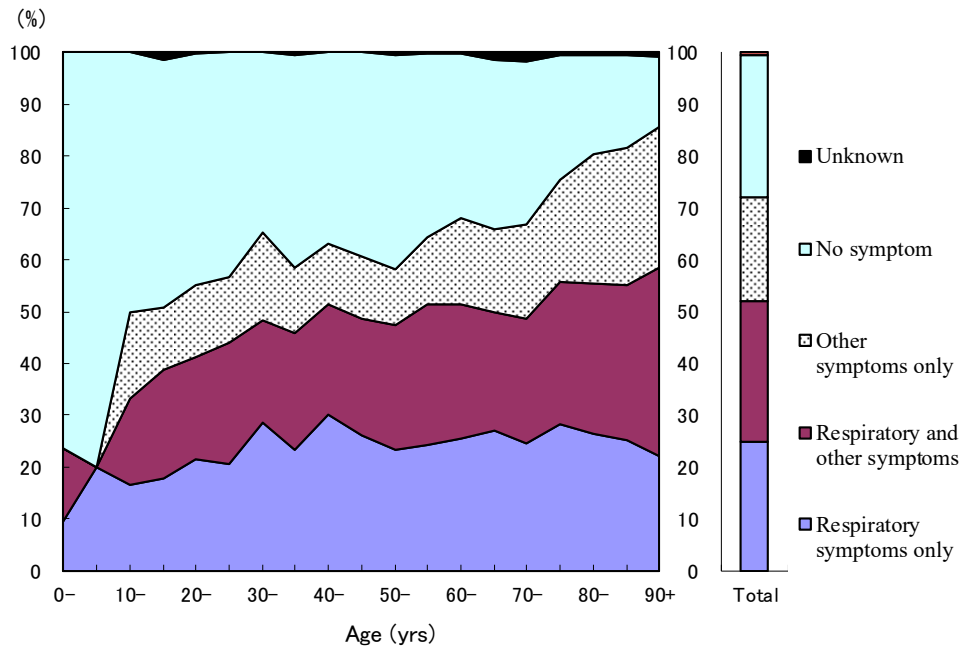


Fig.1 Proportion of symptoms among newly notified pulmonary tuberculosis patients by 5- years age group, in 2020

Respiratory symptoms include cough, sputum expectoration, bloody sputum, and hemoptysis. Other symptoms include wheezing, chest pain, back pain, dyspnea, fever, night sweating, fatigue tendency, and weight loss.

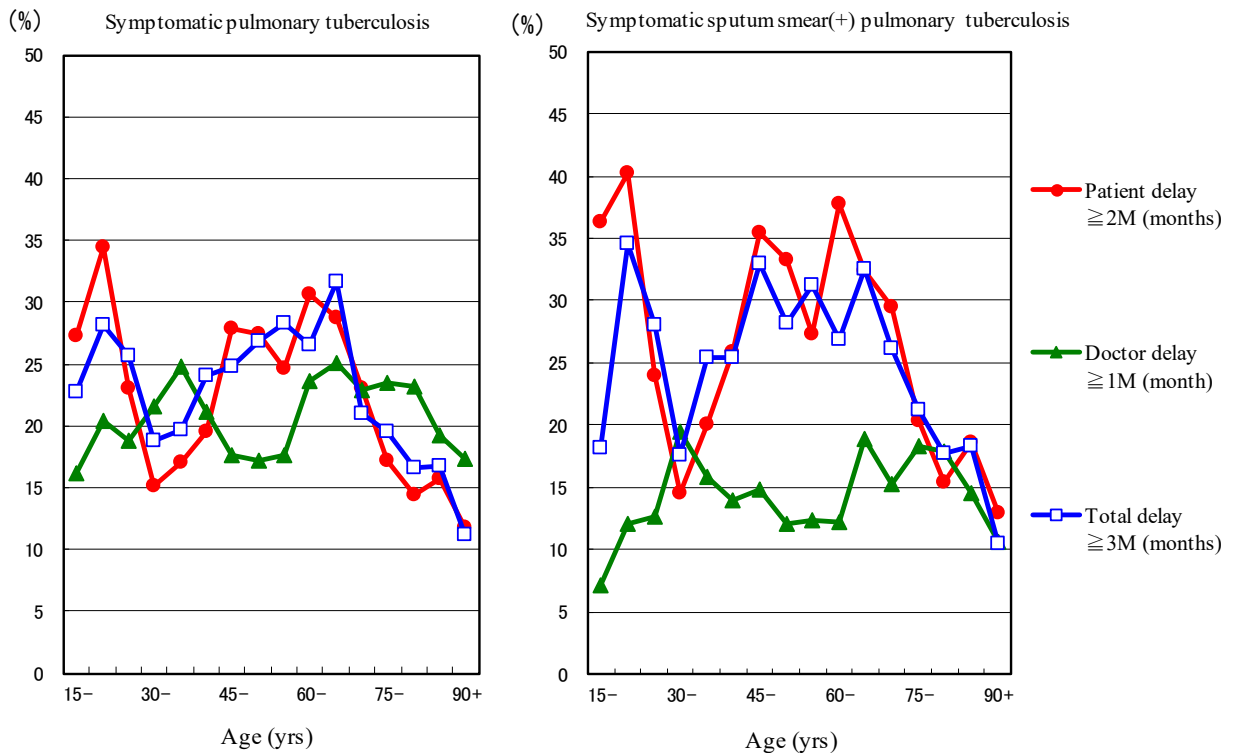


Fig.2 Proportion of patient delay, doctor delay and total delay among symptomatic pulmonary tuberculosis patients by 5-year age group, in 2020

Patient delay: time interval from the onset of symptoms to the first visit to a medical institution of 2 months or longer
 Doctor delay: time interval from the first visit to a medical institution to the diagnosis of tuberculosis of 1 month or longer
 Total delay: time interval from the onset of symptoms to the diagnosis of tuberculosis is 3 months or longer

Previous table Proportion of mode of detection among newly notified TB patients by age group, 2020

Age groups	Newly notified TB patients	Individual medical checkup	Mass screening				Contact examination		Medical institutions			Others	Unknown
			Schools	Residents	Employees	Facilities	Family	Others	Outpatients with TB symptoms (*1)	Inpatients with other diseases	Outpatients with other diseases		
	<i>n</i>	%	%	%	%	%	%	%	%	%	%	%	%
All forms of TB													
Total	12,739	1.6	0.6	1.6	6.2	0.3	1.5	1.6	55.7	16.5	12.4	1.0	0.4
0-14	52	0.0	0.0	0.0	0.0	0.0	46.2	1.9	30.8	5.8	3.8	11.5	0.0
15-19	75	1.3	12.0	0.0	9.3	0.0	12.0	6.7	54.7	0.0	1.3	0.0	0.0
20-24	505	2.0	9.5	0.6	20.6	0.0	1.4	5.5	54.9	1.6	1.6	0.4	0.8
25-29	522	1.9	3.3	0.0	26.8	0.6	1.0	2.9	57.7	1.1	2.7	0.4	0.6
30-34	360	2.5	1.4	0.0	23.3	0.3	1.4	3.6	59.4	2.8	4.4	0.8	0.0
35-39	326	1.8	0.3	0.3	23.9	0.6	2.1	2.5	55.8	4.0	6.4	0.9	0.3
40-44	329	3.0	0.0	1.5	16.7	0.0	2.4	2.7	61.4	4.9	6.4	0.3	0.3
45-49	412	3.6	0.0	0.7	17.2	0.0	2.4	4.4	54.9	5.6	8.7	1.0	1.0
50-54	464	3.4	0.0	1.3	16.4	0.2	3.2	4.3	53.2	4.7	11.4	1.1	0.0
55-59	460	2.6	0.0	1.7	12.8	0.4	3.0	0.9	57.4	8.7	10.2	0.7	0.7
60-64	511	3.1	0.0	2.7	9.8	0.0	2.5	3.1	53.2	8.0	13.5	2.2	0.6
65-69	751	2.4	0.0	2.9	3.6	0.5	1.6	2.3	51.1	13.4	18.6	1.9	0.5
70-74	1,074	2.0	0.0	3.4	2.9	0.1	2.0	0.7	52.5	15.1	18.7	1.7	0.2
75-79	1,473	1.6	0.0	2.8	0.3	0.4	1.0	0.8	53.8	18.9	18.3	1.0	0.2
80-84	1,781	1.0	0.0	1.7	0.0	0.1	0.7	0.3	57.0	22.6	15.2	0.6	0.2
85-89	1,905	0.7	0.0	1.0	0.1	0.3	0.4	0.5	56.9	24.7	14.0	0.8	0.6
90+	1,739	0.5	0.0	0.8	0.0	0.3	0.3	0.6	58.3	29.1	8.5	0.7	0.4
(Re-count) Sputum smear positive pulmonary TB													
Total	4,615	1.1	0.3	1.1	3.8	0.3	0.5	0.6	63.3	16.4	10.7	0.8	0.3
0-14	3	0.0	0.0	0.0	0.0	0.0	0.0	0.0	66.7	33.3	0.0	0.0	0.0
15-19	20	5.0	10.0	0.0	5.0	0.0	0.0	0.0	75.0	0.0	0.0	0.0	0.0
20-24	127	2.4	5.5	0.8	12.6	0.0	0.8	3.9	70.1	2.4	0.8	0.8	0.0
25-29	128	0.8	1.6	0.0	15.6	0.0	0.8	0.0	78.1	0.0	2.3	0.0	0.8
30-34	101	1.0	1.0	0.0	17.8	1.0	1.0	4.0	70.3	1.0	1.0	2.0	0.0
35-39	93	0.0	0.0	0.0	21.5	0.0	0.0	1.1	61.3	6.5	7.5	0.0	1.1
40-44	97	1.0	0.0	0.0	12.4	0.0	0.0	1.0	76.3	3.1	6.2	0.0	0.0
45-49	129	3.9	0.0	0.8	13.2	0.0	0.8	0.8	65.9	4.7	8.5	0.0	1.6
50-54	150	1.3	0.0	0.0	13.3	0.7	1.3	0.7	68.0	4.7	8.0	0.7	0.0
55-59	157	3.2	0.0	0.0	8.9	0.6	0.0	0.0	75.2	3.8	6.4	0.0	0.6
60-64	200	2.5	0.0	1.0	6.0	0.0	1.0	2.0	66.0	5.5	12.5	2.0	0.5
65-69	289	1.7	0.0	1.0	3.8	1.0	0.3	0.7	57.4	14.2	16.6	1.4	0.0
70-74	385	0.8	0.0	2.6	3.1	0.3	0.8	0.3	60.0	14.8	14.3	1.8	0.3
75-79	540	0.9	0.0	2.4	0.2	0.2	0.7	0.2	63.7	18.0	11.7	0.7	0.0
80-84	712	1.0	0.0	1.5	0.0	0.1	0.3	0.4	61.5	20.4	13.6	0.6	0.1
85-89	742	0.8	0.0	0.8	0.0	0.4	0.0	0.1	60.0	22.5	13.7	1.1	0.4
90+	742	0.3	0.0	0.4	0.0	0.5	0.5	0.4	61.2	28.0	7.1	0.4	0.5

TB: tuberculosis

TB symptoms: Respiratory symptoms such as cough, sputum expectoration, bloody sputum, and hemoptysis; and other symptoms such as wheezing, chest pain, back pain, dyspnea, fever, night sweating, fatigue tendency, and weight loss.

Previous table Number of newly notified TB patients by occupation, sex and age group, 2020

Sex/Age group	Total	Service workers	Nurses/Public health nurses	Medical doctors	Other medical workers	Teachers/Nursery nurses	Pupils/Students	Other regular workers	Other temporary/daily workers	Other self-employed	Housekeepers	Infants/Little children	Jobless/ Others	Unknown
Male	7,507	148	7	28	60	18	177	1,378	222	403	7	11	4,856	192
0-14	27	0	0	0	0	0	13	0	0	0	0	11	3	0
15-19	36	0	0	0	0	0	28	4	2	0	0	0	0	2
20-24	251	4	1	0	4	0	93	114	6	1	1	0	24	3
25-29	294	8	0	1	10	3	30	168	21	3	1	0	41	8
30-39	340	28	3	6	10	2	9	189	27	12	0	0	46	8
40-49	439	38	2	7	13	2	1	236	19	37	0	0	69	15
50-59	605	23	1	2	10	5	0	297	35	79	0	0	132	21
60-69	900	22	0	5	10	5	1	244	51	83	0	0	438	41
70-79	1,666	18	0	4	2	1	2	111	53	115	3	0	1,306	51
80+	2,949	7	0	3	1	0	0	15	8	73	2	0	2,797	43
Female	5,232	146	116	5	163	25	164	509	146	81	114	14	3,639	110
0-14	25	0	0	0	0	0	11	0	0	0	0	14	0	0
15-19	39	0	0	0	1	0	27	7	1	0	0	0	2	1
20-24	254	20	6	0	11	0	79	83	18	1	1	0	33	2
25-29	228	21	8	0	13	7	36	83	8	2	5	0	34	11
30-39	346	24	33	1	41	4	10	120	29	3	14	0	58	9
40-49	302	25	27	1	29	4	0	84	38	8	17	0	56	13
50-59	319	27	27	2	36	5	1	79	18	14	10	0	94	6
60-69	362	14	12	0	24	5	0	37	20	14	18	0	198	20
70-79	881	10	2	1	8	0	0	13	13	32	29	0	751	22
80+	2,476	5	1	0	0	0	0	3	1	7	20	0	2,413	26

Previous table Proportion of mode of detection among newly notified pulmonary TB patients aged 20-59 years by occupation, 2020

	Pulmonary TB patients	Individual medical checkup	Mass screening			Contact examination		Clinics/Hospitals			Others/Unknown
			Residents	Employees	Schools/Facilities	Family	Others	Outpatients with TB symptoms(*2)	Inpatients with other diseases	Outpatients with other diseases	
Total	2,580	3.2	1.0	24.7	2.9	2.6	4.2	50.7	3.3	5.7	1.9
Service workers	166	0.6	0.6	15.7	0.0	4.2	4.2	63.9	4.2	4.8	1.8
Medical workers(*1)	238	3.4	0.4	37.0	0.8	1.3	9.2	38.7	2.1	5.0	2.1
Teachers/ Nursery nurses	20	10.0	0.0	30.0	5.0	5.0	10.0	35.0	0.0	5.0	0.0
Students	195	2.6	0.5	4.1	30.8	0.5	9.7	46.7	1.0	1.0	3.1
Other regular workers	1,126	2.6	0.7	37.0	0.2	2.3	3.1	45.7	2.3	4.7	1.3
Other temporary/ daily workers	166	3.0	1.2	22.9	1.8	6.0	4.2	47.0	2.4	8.4	3.0
Other self-employed	127	8.7	3.9	7.1	0.0	3.9	3.9	57.5	5.5	7.9	1.6
Housekeepers	33	6.1	3.0	3.0	0.0	3.0	0.0	69.7	6.1	9.1	0.0
Jobless/ Others	445	3.8	1.3	7.9	1.3	2.9	2.2	63.4	6.5	8.8	1.8
Unknown	64	3.1	0.0	14.1	0.0	0.0	3.1	62.5	3.1	6.3	7.8

*1 Medical workers include nurses, public health nurses, medical doctors and dentists, physical therapists, occupational therapists, medical technologists, radiographers, and co-medicals.

*2 TB symptoms: Respiratory symptoms such as cough, sputum expectoration, bloody sputum, and hemoptysis; and other symptoms such as wheezing, chest pain, back pain, dyspnea, fever, night sweating, fatigue tendency, and weight loss.

【Tuberculosis Characteristics upon Diagnosis】

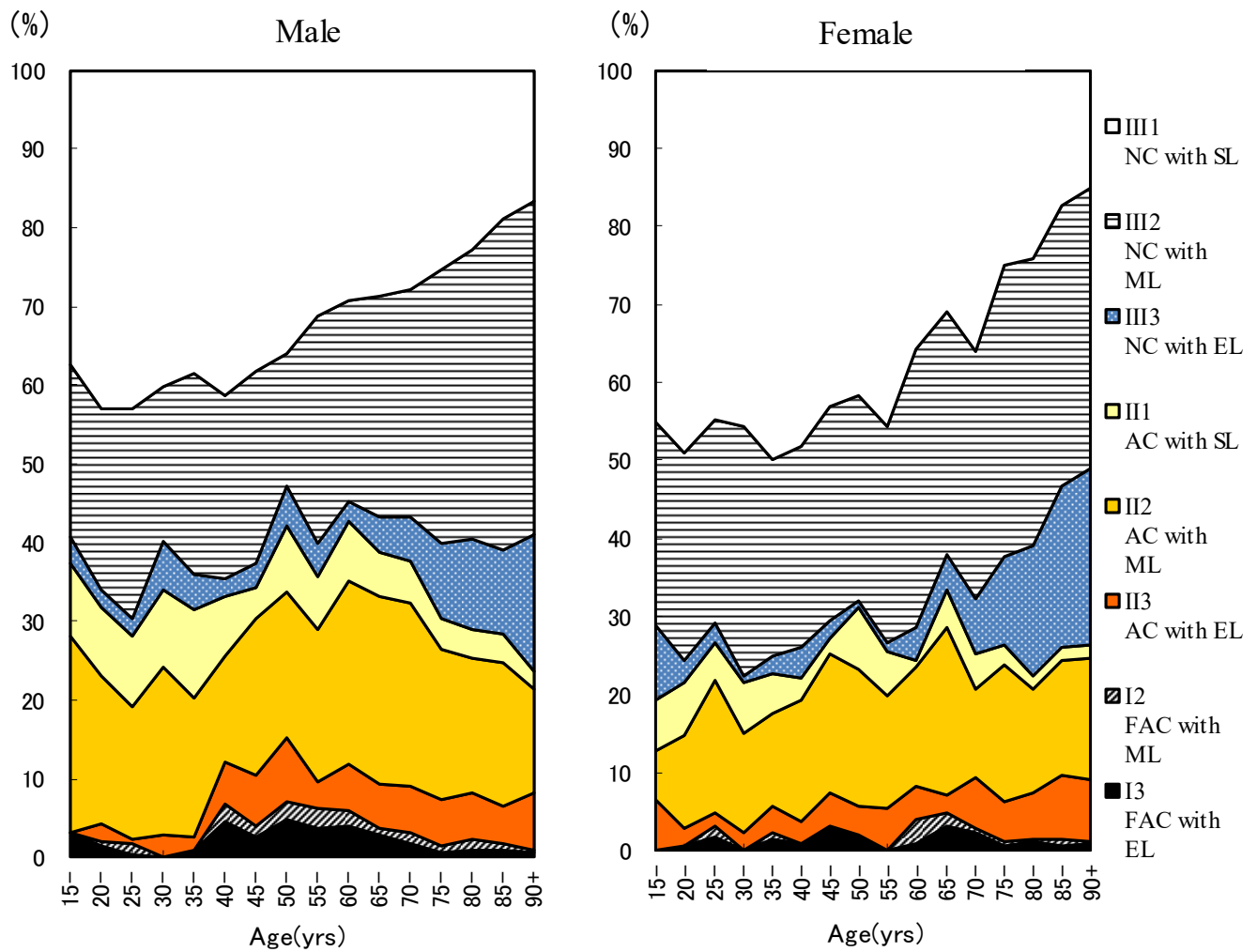


Fig.3 Proportion of cases classified by X-ray classification by sex and 5-yearage group, 2020
 NC : Non-cavitory SL : Slight lesion AC : Advanced cavitory ML : Moderate lesion
 FAC: Far-advance cavitory EL : Extensive lesion

Table 2 Number of newly notified tuberculosis patients with HIV infection, by sex and age group, 2020 and 2007
– 2020

Age group	Sputum smear positive		Other bacteriologically positive		Bacteriologically negative		Extra-pulmonary		Total	
	M	F	M	F	M	F	M	F	M	F
2020 Calendar year										
Total	8 (3)	2 (1)	7 (3)	1 (1)	3 (1)	0	10 (5)	0	28 (12)	3 (2)
0-19	0	0	0	0	0	0	0	0	0	0
20-24	2 (2)	0	0	1 (1)	0	0	1 (1)	0	3 (3)	1 (1)
25-29	0	0	2 (1)	0	0	0	3 (2)	0	5 (3)	0
30-34	1 (1)	0	0	0	0	0	1	0	2 (1)	0
35-39	0	0	0	0	1	0	2 (1)	0	3 (1)	0
40-44	0	0	0	0	0	0	1 (1)	0	1 (1)	0
45-49	1	0	1 (1)	0	0	0	0	0	2 (1)	0
50-54	2	0	0	0	1 (1)	0	0	0	3 (1)	0
55-59	1	0	2 (1)	0	0	0	0	0	3 (1)	0
60-64	0	0	0	0	0	0	1	0	1	0
65-69	0	1 (1)	1	0	1	0	0	0	2	1 (1)
70-74	0	0	1	0	0	0	1	0	2	0
75-79	1	0	0	0	0	0	0	0	1	0
80+	0	1	0	0	0	0	0	0	0	1
2007-2020 Calendar year										
Total	191 (26)	47 (23)	109 (28)	17 ##	51 (11)	11 (8)	225 (49)	32 (18)	576 (114)	107 (60)
0-19	1 (1)	0	0	0	1 (1)	0	2	0	4 (2)	0
20-24	10 (8)	0	4 (3)	1 (1)	1 (1)	1 (1)	3 (2)	1	18 (14)	3 (2)
25-29	10 (5)	7 (6)	4 (2)	1 (1)	1 (1)	2 (2)	17 (6)	1 (1)	32 (14)	11 (10)
30-34	14 (4)	5 (5)	13 (2)	4 (3)	4 (2)	1 (1)	29 (10)	5 (3)	60 (18)	15 (12)
35-39	25 (2)	4 (3)	21 (6)	3 (3)	9 (2)	3 (3)	38 (10)	6 (5)	93 (20)	16 (14)
40-44	32 (2)	7 (5)	16 (5)	0	9 (2)	3 (1)	45 (15)	8 (6)	102 (24)	18 (12)
45-49	19 (2)	3 (3)	14 (6)	1 (1)	6 (1)	0	35 (5)	2	74 (14)	6 (4)
50-54	16 (1)	1	12 (2)	2 (1)	6 (1)	0	16 (1)	0	50 (5)	3 (1)
55-59	11	0	7 (2)	0	4	0	11	3 (3)	33 (2)	3 (3)
60-64	19	1	6	1 (1)	3	0	9	0	37	2 (1)
65-69	10	1 (1)	6	0	5	0	10	1	31	2 (1)
70-74	6 (1)	3	3	2	1	0	5	2	15 (1)	7
75-79	7	1	0	0	1	0	3	2	11	3
80+	11	14	3	2	0	1	2	1	16	18

(): Re-count of foreigners

HIV : Human Immunodeficiency Virus. M : male patients, F : female patients.

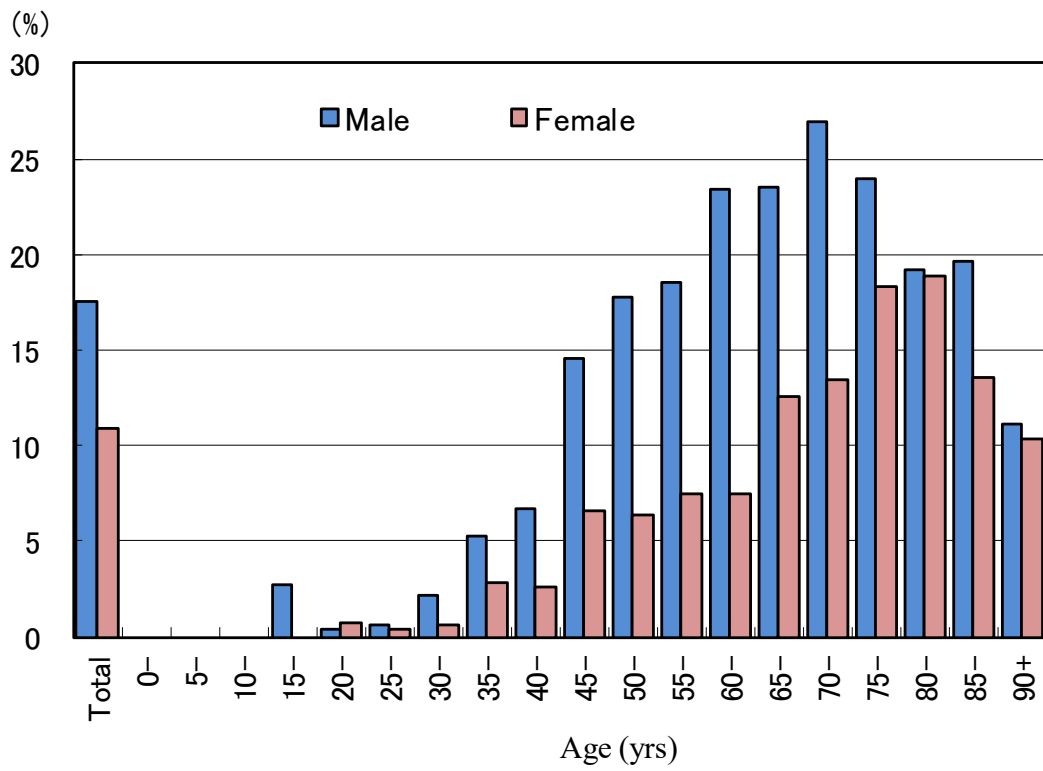


Fig.4 Proportion of newly notified tuberculosis patients with diabetes mellitus in each age-group by sex, 2020

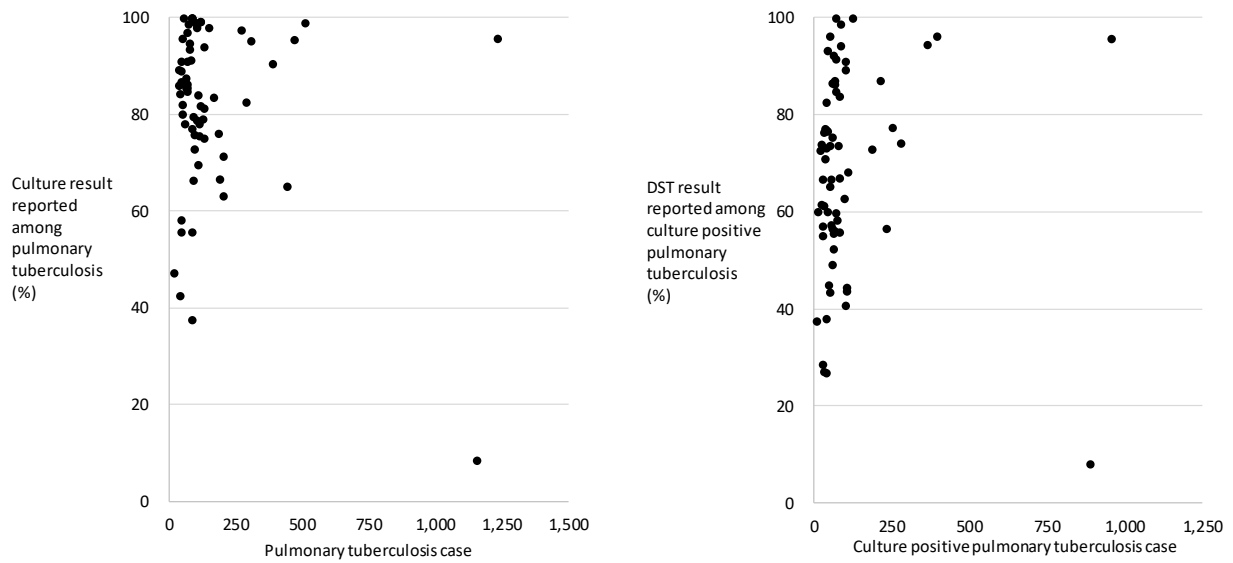
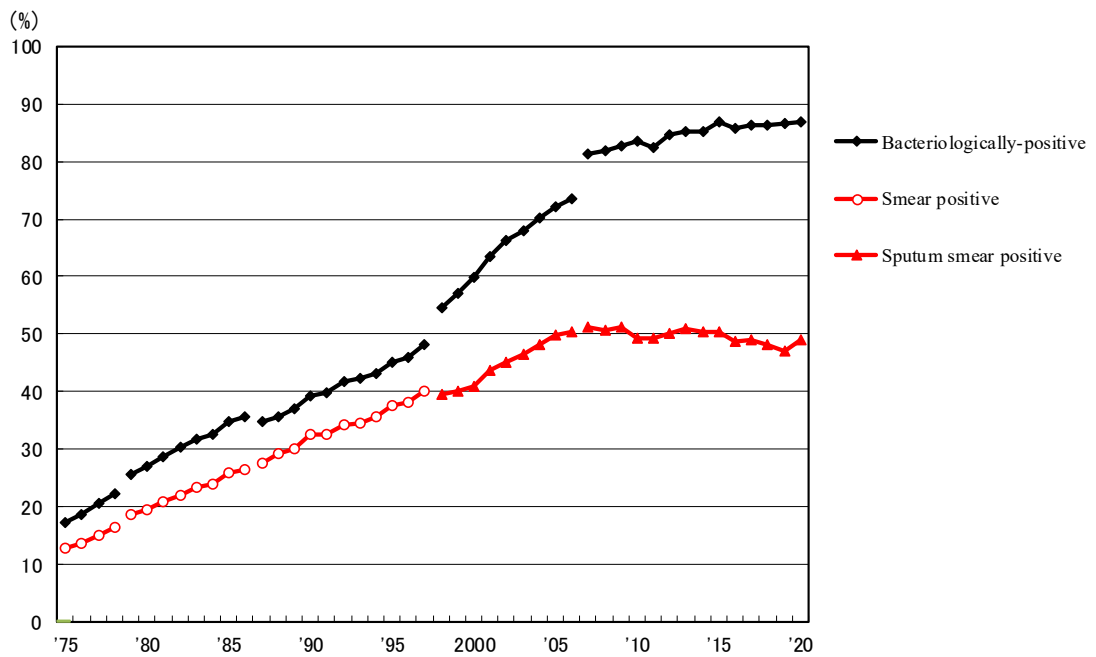


Fig. 5 Scatter plot of culture results reported among pulmonary tuberculosis patients and anti-tuberculosis drug susceptibility test results among newly notified pulmonary tuberculosis patients, by prefecture and major city, 2020



Previous Fig

Proportion of bacteriologically confirmed cases among newly notified pulmonary tuberculosis patients, 1975-2020

Sources of information and subjects:

Annual tuberculosis reports from public health centers

1975-1978: All forms of tuberculosis

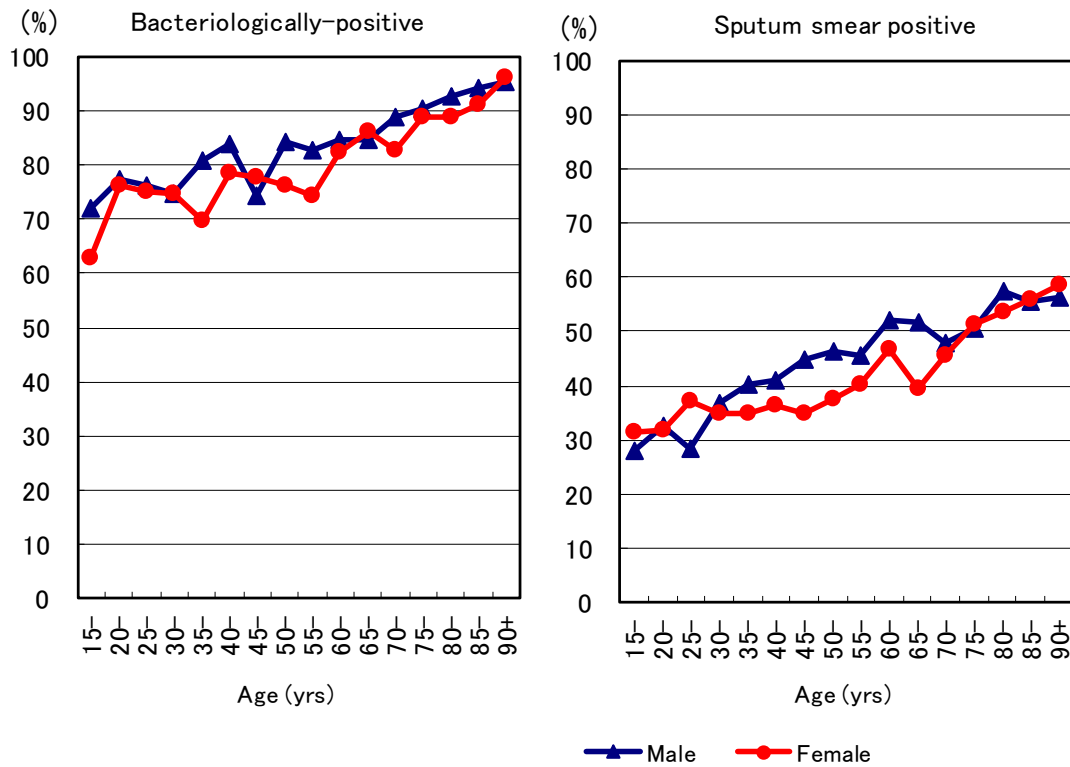
1979-1986: Pulmonary tuberculosis

Nationwide computerized tuberculosis surveillance system

1987-1997: Pulmonary Tuberculosis

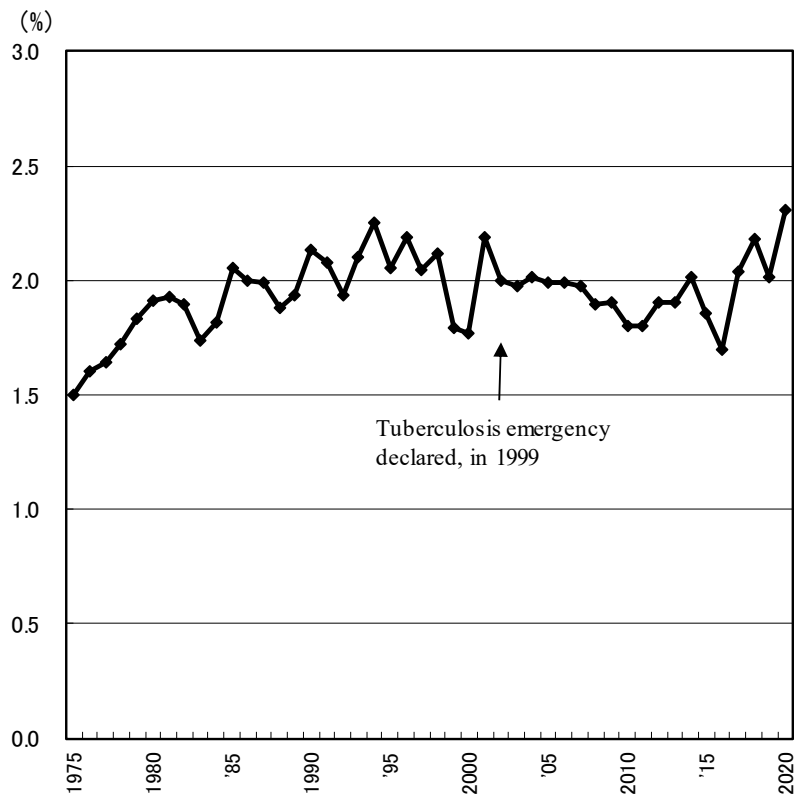
1998-2006: Pulmonary tuberculosis (New patient criteria for notification were applied)

2007-2009: Pulmonary tuberculosis (Item of nucleic acid amplification was added)



Previous Fig.

Proportion of bacteriologically confirmed cases among newly notified pulmonary tuberculosis patients by sex and 5-year age group, 2020



Previous Fig. Proportion of far-advanced cavitary cases among newly notified pulmonary Tuberculosis patients, 1975-2020

Previous table Proportion of cavitory or/and sputum smear positive cases among newly notified pulmonary TB patients aged 30-59 years, 2020

	Male								Female							
	Pulmonary TB	Cavitory or sputum smear(+)			Cavitory and sputum smear(+)			Pulmonary TB	Cavitory or sputum smear(+)			Cavitory and sputum smear(+)				
		n	%	Ratio	n	%	Ratio		n	%	Ratio	n	%	Ratio		
Service workers	68	42	61.8	2.8	24	35.3	3.6	57	21	36.8	1.1	12	21.1	2.2		
Medical workers	41	9	22.0	1.0	4	9.8	1.0	154	53	34.4	1.0	15	9.7	1.0		
Teachers/ Nursery nurses	7	4	57.1	2.6	0	0.0	0.0	7	4	57.1	1.7	2	28.6	2.9		
Other regular workers	576	272	47.2	2.2	121	21.0	2.2	195	85	43.6	1.3	34	17.4	1.8		
Other temporary/ daily workers	67	50	74.6	3.4	27	40.3	4.1	57	23	40.4	1.2	9	15.8	1.6		
Other self-employed	105	59	56.2	2.6	30	28.6	2.9	18	10	55.6	1.6	6	33.3	3.4		
Jobless	163	108	66.3	3.0	60	36.8	3.8	129	66	51.2	1.5	29	22.5	2.3		
Others	78	36	46.2	2.1	12	15.4	1.6	67	33	49.3	1.4	7	10.4	1.1		
Total	1,105	580	52.5		278	25.2		684	295	43.1		114	16.7			

Others:Houskeepers/ Students/ Unknown

Ratio:The ratio of each proportion to that of medical workers

Previous table Drug susceptibility test results among newly notified pulmonary tuberculosis patients, by sex and age group, 2019 and 2007–2020

Age group	Total										New treatment (Re-count)									
	Male					Female					Male					Female				
	DST result obtained	MDR	Any INH resistance	Any RFP resistance	Any resistance	DST result obtained	MDR	Any INH resistance	Any RFP resistance	Any resistance	DST result obtained	MDR	Any INH resistance	Any RFP resistance	Any resistance	DST result obtained	MDR	Any INH resistance	Any RFP resistance	Any resistance
2020 Calendar year																				
Total	3,267	26	195	37	395	1,942	20	102	23	184	3,081	17	170	27	365	1,857	14	90	17	167
0-19	17	1	2	1	6	19	0	2	0	3	16	1	2	1	6	19	0	2	0	3
20-29	218	5	27	9	52	179	11	26	12	41	211	3	24	7	48	169	9	23	10	38
30-39	148	6	17	6	34	116	2	5	3	12	144	3	14	3	31	109	2	5	3	12
40-49	191	2	14	2	24	110	2	12	3	19	184	2	13	2	22	105	1	11	2	18
50-59	280	1	18	3	36	102	1	7	1	11	266	1	15	3	33	94	0	4	0	8
60-69	420	3	27	6	58	136	0	9	0	13	403	3	23	5	53	131	0	9	0	12
70-79	752	1	38	2	83	312	2	18	2	30	713	0	34	1	78	300	1	14	1	26
80+	1,241	7	52	8	102	968	2	23	2	55	1,144	4	45	5	94	930	1	22	1	50
2007-2020 Calendar year																				
Total	63,785	463	3,275	690	7,448	34,449	276	1,579	363	3,414	58,388	307	2,728	473	6,549	32,494	181	1,320	251	3,032
0-19	490	12	48	14	101	399	3	36	4	76	470	9	45	11	98	380	3	34	4	71
20-29	3,472	77	300	101	623	2,891	81	248	102	502	3,324	59	269	78	581	2,767	59	218	76	460
30-39	3,636	38	247	56	579	2,798	46	200	60	406	3,450	28	230	46	546	2,689	36	180	46	373
40-49	4,901	41	269	65	656	2,421	24	128	35	299	4,608	31	243	47	594	2,300	15	113	25	273
50-59	6,830	60	388	101	976	2,009	25	103	35	230	6,358	35	336	66	881	1,892	10	77	19	198
60-69	10,626	68	559	123	1,381	2,955	20	153	26	347	9,775	48	466	85	1,208	2,783	14	124	18	302
70-79	13,851	86	714	123	1,636	6,007	32	265	41	597	12,531	45	555	70	1,394	5,592	15	218	21	527
80+	19,979	81	750	107	1,496	14,969	45	446	60	957	17,872	52	584	70	1,247	14,091	29	356	42	828
2007-2020 Calendar year																				
Total	100%	0.7	5.1	1.1	11.7	100%	0.8	4.6	1.1	9.9	100%	0.5	4.7	0.8	11.2	100%	0.6	4.1	0.8	9.3
0-19	100	2.4	9.8	2.9	20.6	100	0.8	9.0	1.0	19.0	100	1.9	9.6	2.3	20.9	100	0.8	8.9	1.1	18.7
20-29	100	2.2	8.6	2.9	17.9	100	2.8	8.6	3.5	17.4	100	1.8	8.1	2.3	17.5	100	2.1	7.9	2.7	16.6
30-39	100	1.0	6.8	1.5	15.9	100	1.6	7.1	2.1	14.5	100	0.8	6.7	1.3	15.8	100	1.3	6.7	1.7	13.9
40-49	100	0.8	5.5	1.3	13.4	100	1.0	5.3	1.4	12.4	100	0.7	5.3	1.0	12.9	100	0.7	4.9	1.1	11.9
50-59	100	0.9	5.7	1.5	14.3	100	1.2	5.1	1.7	11.4	100	0.6	5.3	1.0	13.9	100	0.5	4.1	1.0	10.5
60-69	100	0.6	5.3	1.2	13.0	100	0.7	5.2	0.9	11.7	100	0.5	4.8	0.9	12.4	100	0.5	4.5	0.6	10.9
70-79	100	0.6	5.2	0.9	11.8	100	0.5	4.4	0.7	9.9	100	0.4	4.4	0.6	11.1	100	0.3	3.9	0.4	9.4
80+	100	0.4	3.8	0.5	7.5	100	0.3	3.0	0.4	6.4	100	0.3	3.3	0.4	7.0	100	0.2	2.5	0.3	5.9

DST: Drug susceptibility test. MDR: Multi-drug resistance, i.e., resistant to at least INH and RFP.

INH: Isoniazid. RFP: Rifampicin.

Previous table Drug susceptibility test results among newly notified pulmonary tuberculosis patients, by sex and age group, 2007-2020 (Re-count of foreigners)

Age group	Total										New treatment (Re-count)									
	Male					Female					Male					Female				
	DST result obtained	MDR	Any INH resistance	Any RFP resistance	Any resistance	DST result obtained	MDR	Any INH resistance	Any RFP resistance	Any resistance	DST result obtained	MDR	Any INH resistance	Any RFP resistance	Any resistance	DST result obtained	MDR	Any INH resistance	Any RFP resistance	Any resistance
2007-2020 Calendar year																				
Total	2,764	107	334	132	538	2,745	120	340	145	537	2,632	75	290	98	487	2,615	92	300	112	483
0-19	159	11	33	13	50	104	2	14	3	18	153	8	30	10	47	101	2	13	3	17
20-29	1,493	68	192	85	303	1,281	71	171	87	284	1,434	51	167	65	275	1,232	54	149	67	256
30-39	475	19	53	24	88	667	26	92	29	130	452	14	48	19	81	638	20	84	22	120
40-49	214	5	18	6	34	342	8	30	10	52	200	1	13	1	27	320	5	27	6	46
50-59	141	1	7	1	13	161	6	19	8	29	135	0	6	0	12	147	5	14	7	22
60-69	124	3	19	3	32	80	3	9	4	12	114	3	17	3	30	77	3	9	4	12
70-79	79	0	7	0	9	45	4	5	4	7	71	0	5	0	7	39	3	4	3	5
80+	79	0	5	0	9	65	0	0	0	5	73	0	4	0	8	61	0	0	0	5
2007-2020 Calendar year																				
Total	100%	3.9	12.1	4.8	19.5	100%	4.4	12.4	5.3	19.6	100%	2.8	11.0	3.7	18.5	100%	3.5	11.5	4.3	18.5
0-19	100	6.9	20.8	8.2	31.4	100	1.9	13.5	2.9	17.3	100	5.2	19.6	6.5	30.7	100	2.0	12.9	3.0	16.8
20-29	100	4.6	12.9	5.7	20.3	100	5.5	13.3	6.8	22.2	100	3.6	11.6	4.5	19.2	100	4.4	12.1	5.4	20.8
30-39	100	4.0	11.2	5.1	18.5	100	3.9	13.8	4.3	19.5	100	3.1	10.6	4.2	17.9	100	3.1	13.2	3.4	18.8
40-49	100	2.3	8.4	2.8	15.9	100	2.3	8.8	2.9	15.2	100	0.5	6.5	0.5	13.5	100	1.6	8.4	1.9	14.4
50-59	100	0.7	5.0	0.7	9.2	100	3.7	11.8	5.0	18.0	100	0.0	4.4	0.0	8.9	100	3.4	9.5	4.8	15.0
60-69	100	2.4	15.3	2.4	25.8	100	3.8	11.3	5.0	15.0	100	2.6	14.9	2.6	26.3	100	3.9	11.7	5.2	15.6
70-79	100	0.0	8.9	0.0	11.4	100	8.9	11.1	8.9	15.6	100	0.0	7.0	0.0	9.9	100	7.7	10.3	7.7	12.8
80+	100	0.0	6.3	0.0	11.4	100	0.0	0.0	0.0	7.7	100	0.0	5.5	0.0	11.0	100	0.0	0.0	0.0	8.2

DST: Drug susceptibility test. MDR: Multi-drug resistance, i.e., resistant to at least INH and RFP. INH: Isoniazid. RFP: Rifampicin.