

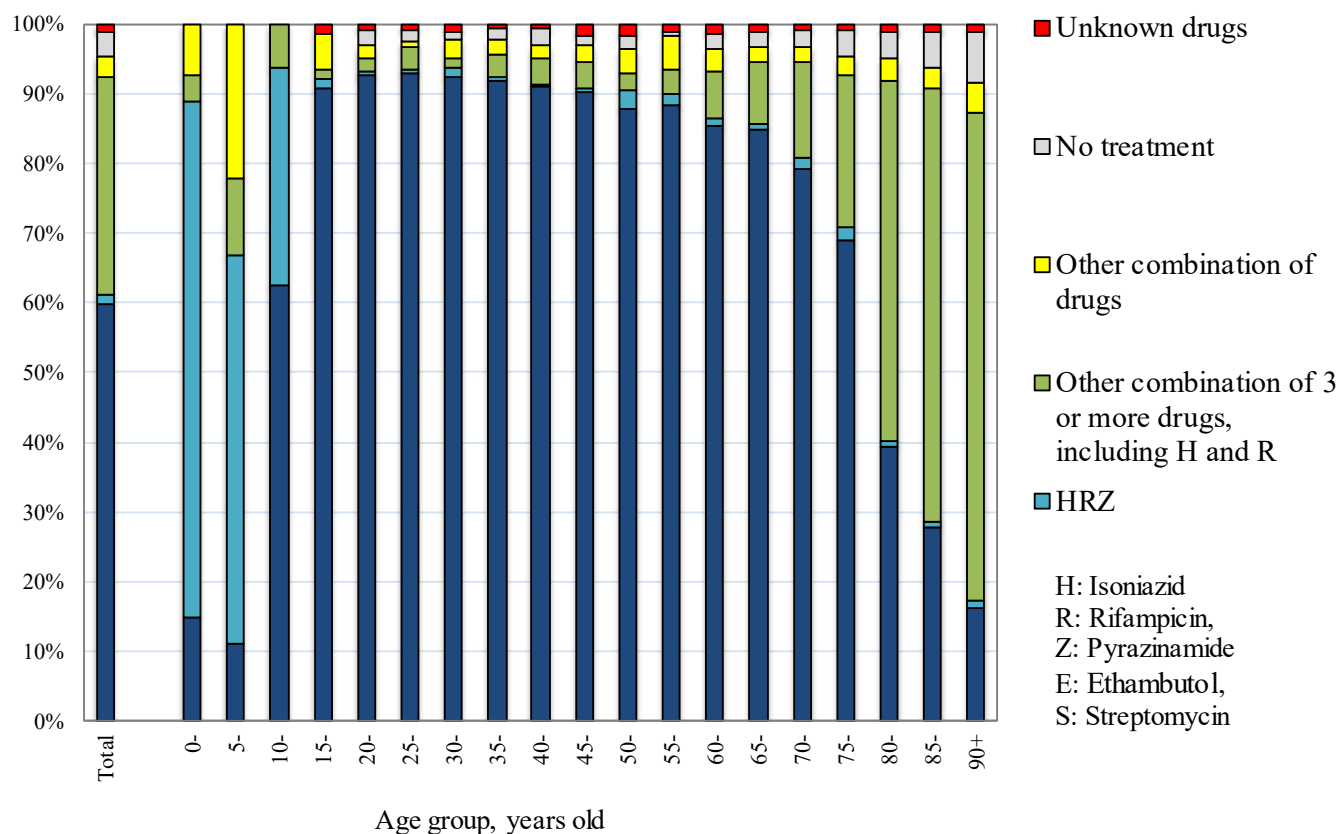
【Treatment 1】

Table 1 Number of patients with TB on re-treatment, by year when previous TB treatment was initiated and age group, 2020

Year when previous TB treatment initiated	Total	Age group (years)								Previous TB treatment regimen unknown (re-count)
		0-19	20-29	30-39	40-49	50-59	60-69	70-79	80+	
Total	546	9	43	25	28	46	68	122	205	154
~1949	17	0	0	0	0	0	0	0	17	14
1950-59	65	0	0	0	0	0	2	10	53	38
1960-69	31	0	0	0	0	0	1	11	19	25
1970-79	16	0	0	0	0	0	3	7	6	14
1980-89	12	0	0	0	0	1	2	4	5	9
1990-99	25	0	0	0	3	6	4	7	5	14
2000-09	42	2	0	4	4	8	5	7	12	10
2010-20	338	7	43	21	21	31	51	76	88	30
2010-2020 (re-count)										
2010	7	0	0	0	1	1	2	0	3	2
2011	14	0	0	1	2	3	1	4	3	1
2012	17	0	2	1	1	2	3	5	3	2
2013	9	0	2	0	0	0	2	2	3	2
2014	13	0	2	1	2	0	2	5	1	2
2015	21	0	3	1	1	1	5	5	5	2
2016	32	0	4	1	3	4	7	6	7	7
2017	42	1	7	4	1	4	2	10	13	2
2018	75	0	11	3	6	8	9	16	22	3
2019	75	1	10	5	2	6	13	20	18	6
2020	33	5	2	4	2	2	5	3	10	1

TB: tuberculosis

Fig.1 Anti-tuberculosis drugs upon notification by age group in 2020



Previous table Number of retreatment tuberculosis patients by previous tuberculosis treatment regimen and age group, 2020

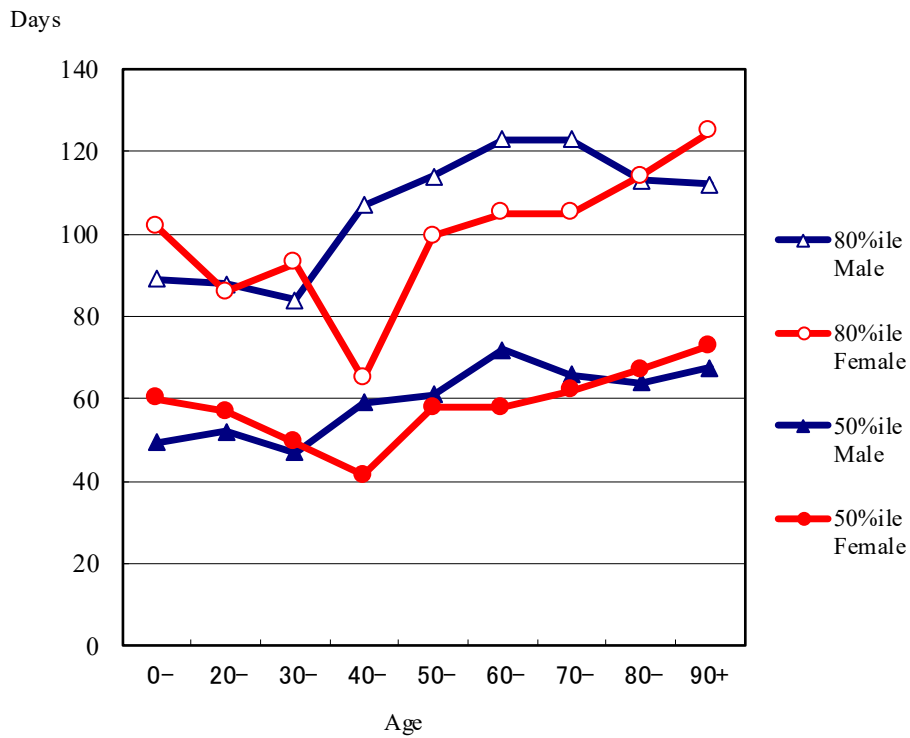
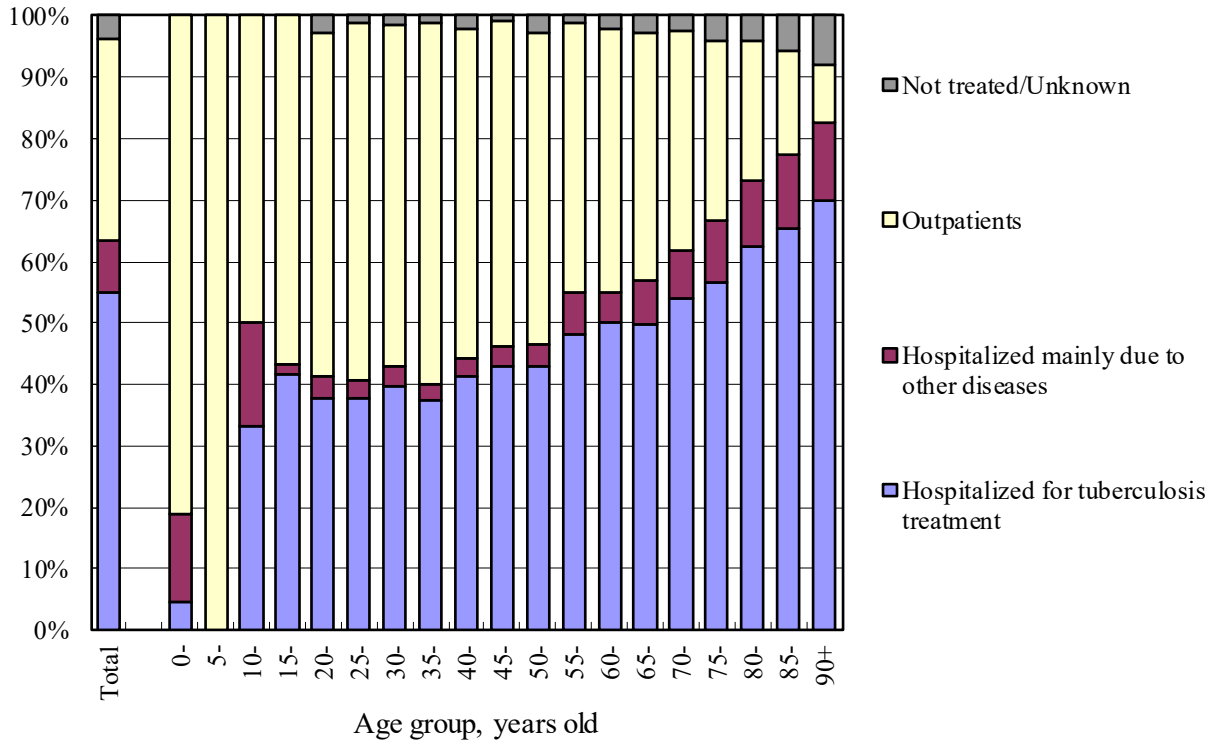
Age group	Retreatment	Previous treatment regimen				
		Regimen with HRZ	Other regimen with HR	Other regimen	LTBI treatment	Unknown
Total	546	179	79	51	83	154
0-4	1	0	0	0	1	0
5-9	3	0	0	0	3	0
10-14	3	0	0	0	3	0
15-19	2	1	0	0	1	0
20-24	22	9	1	0	8	4
25-29	21	10	2	1	6	2
30-34	16	4	2	1	7	2
35-39	9	5	0	0	2	2
40-44	13	6	2	0	5	0
45-49	15	5	2	2	3	3
50-54	21	9	2	1	3	6
55-59	25	12	3	0	8	2
60-64	24	12	2	4	2	4
65-69	44	21	5	1	8	9
70-74	50	16	6	3	5	20
75-79	72	30	12	7	6	17
80-84	80	24	12	12	7	25
85-89	70	11	17	13	3	26
90+	55	4	11	6	2	32

H : Isoniazid, R : Rifampicin, Z : Pyrazinamide

LTBI : Latent Tuberculosis Infection

**【Treatment 2】**

Fig.2 Proportion of the outpatients and the hospitalized patients by age group in 2020 (N=9,446)



Previous Fig. Median (50 percentile) and 80 percentile of duration of hospitalization among those hospitalized with tuberculosis and with known discharged day, new sputum-smear positive pulmonary tuberculosis patients in 2019 by sex and age group

Previous table Proportion (%) hospitalized among newly notified tuberculosis patients in 2020 by age group and patient classification

Age	Pulmonary TB								Extra-pulmonary	
	Total		Sputum smear positive		Other bacillary positive		Bacillary negative /unknown			
	Ht	Ho	Ht	Ho	Ht	Ho	Ht	Ho	Ht	Ho
Total	55.1	8.4	89.9	2.5	25.7	14.6	10.4	12.1	29.5	20.1
0-19	31.4	5.7	100.0	0.0	21.9	6.3	6.0	8.0	4.5	9.1
20-29	37.8	3.2	88.2	2.4	16.6	4.0	8.6	2.7	17.4	5.5
30-39	38.8	2.8	89.2	1.0	11.9	5.4	6.0	1.5	15.9	6.4
40-49	42.3	3.0	91.2	0.4	13.2	4.2	2.5	5.7	13.8	12.7
50-59	45.6	5.3	88.3	1.3	15.0	8.5	6.8	8.3	18.3	14.7
60-69	49.9	6.2	88.1	1.8	14.9	10.1	6.6	11.3	18.6	15.7
70-79	55.5	9.0	90.1	2.9	25.9	14.2	8.5	17.5	26.0	22.0
80-89	64.1	11.4	90.6	3.4	33.0	21.0	19.8	23.7	37.8	25.8
90+	69.9	12.7	90.6	2.4	42.3	25.7	40.0	34.5	46.0	24.8

Ht: Hospitalized for tuberculosis treatment

Ho: Hospitalized mainly due to other diseases

【Treatment Outcomes】

Table 2 Patients deleted from tuberculosis registration by the end of years (in 2019 and in 2020)  
- Patients with tuberculosis patients and LTBI notified in the previous years (in 2018 and in 2019, respectively) -

	Newly notified patients with tuberculosis												Patients with LTBI (Not included in the total) (%)			
	Total (%)	Patients with pulmonary tuberculosis						Patients with extra-pulmonary tuberculosis (%)								
		Sub-total (pulmonary tuberculosis) (%)		Sputum-smear positive		Other bacteriologically positive (%)	Bacteriologically negative and others (%)									
		New (%)	Re-treatment (%)													
<b>Newly notified tuberculosis cases in 2018*</b>	<b>15,527</b>	<b>(100)</b>	<b>11,996</b>	<b>(100)</b>	<b>5,505</b>	<b>(100)</b>	<b>305</b>	<b>(100)</b>	<b>4,601</b>	<b>(100)</b>	<b>1,585</b>	<b>(100)</b>	<b>3,531</b>	<b>(100)</b>	<b>7,406</b>	<b>(100)</b>
Total number of patients deleted from tuberculosis registration by the end of 2019	5,222	(33.6)	4,111	(34.3)	2,181	(39.6)	111	(36.4)	1,445	(31.4)	374	(23.6)	1,111	(31.5)	4,186	(56.5)
No need for post-treatment follow-up	59	(0.4)	39	(0.3)	12	(0.2)	3	(1.0)	14	(0.3)	10	(0.6)	20	(0.6)	3,465	(46.8)
Died	4,011	(25.8)	3,120	(26.0)	1,776	(32.3)	84	(27.5)	1,095	(23.8)	165	(10.4)	891	(25.2)	221	(3.0)
Tuberculosis-related death	1,243	(8.0)	1,002	(8.4)	747	(13.6)	35	(11.5)	198	(4.3)	22	(1.4)	241	(6.8)	1	(0.0)
Other causes of death	2,768	(17.8)	2,118	(17.7)	1,029	(18.7)	49	(16.1)	897	(19.5)	143	(9.0)	650	(18.4)	220	(3.0)
Transfer out	1,072	(6.9)	887	(7.4)	361	(6.6)	20	(6.6)	315	(6.8)	191	(12.1)	185	(5.2)	388	(5.2)
Register during follow-up	63	(0.4)	53	(0.4)	28	(0.5)	3	(1.0)	17	(0.4)	5	(0.3)	10	(0.3)	42	(0.6)
Other reasons	17	(0.1)	12	(0.1)	4	(0.1)	1	(0.3)	4	(0.1)	3	(0.2)	5	(0.1)	70	(0.9)
<b>Newly notified tuberculosis cases in 2019**</b>	<b>14,422</b>	<b>(100)</b>	<b>11,095</b>	<b>(100)</b>	<b>4,985</b>	<b>(100)</b>	<b>267</b>	<b>(100)</b>	<b>4,376</b>	<b>(100)</b>	<b>1,467</b>	<b>(100)</b>	<b>3,327</b>	<b>(100)</b>	<b>7,676</b>	<b>(100)</b>
Total number of patients deleted from tuberculosis registration by the end of 2020	4,821	(33.4)	3,731	(33.6)	1,951	(39.1)	83	(31.1)	1,368	(31.3)	329	(22.4)	1,090	(32.8)	4,370	(56.9)
No need for post-treatment follow-up	51	(0.4)	21	(0.2)	3	(0.1)	3	(1.1)	7	(0.2)	8	(0.5)	30	(0.9)	3,671	(47.8)
Died	3,767	(26.1)	2,913	(26.3)	1,634	(32.8)	68	(25.5)	1,049	(24.0)	162	(11.0)	854	(25.7)	263	(3.4)
Tuberculosis-related death	1,193	(8.3)	957	(8.6)	710	(14.2)	24	(9.0)	197	(4.5)	26	(1.8)	236	(7.1)	8	(0.1)
Other causes of death	2,574	(17.8)	1,956	(17.6)	924	(18.5)	44	(16.5)	852	(19.5)	136	(9.3)	618	(18.6)	255	(3.3)
Transfer out	911	(6.3)	724	(6.5)	284	(5.7)	10	(3.7)	287	(6.6)	143	(9.7)	187	(5.6)	332	(4.3)
Register during follow-up	56	(0.4)	44	(0.4)	22	(0.4)	2	(0.7)	15	(0.3)	5	(0.3)	12	(0.4)	34	(0.4)
Other reasons	36	(0.2)	29	(0.3)	8	(0.2)	0	(0.0)	10	(0.2)	11	(0.7)	7	(0.2)	70	(0.9)

\* Based on the annual report database in 2019. \*\* Based on the annual report database in 2020.

LTBI : Latent Tuberculosis Infection

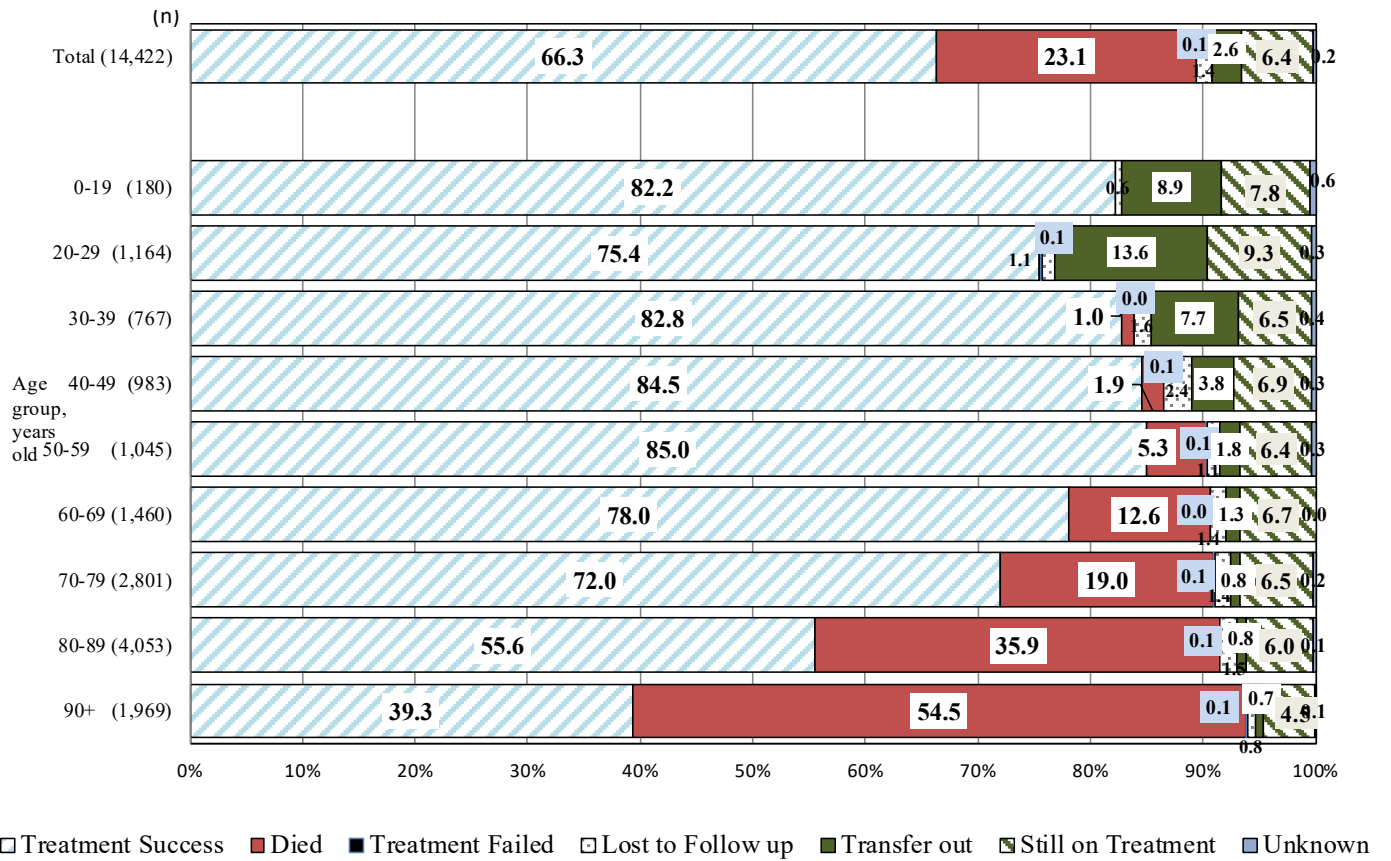


Fig. 3 Treatment outcomes of newly notified tuberculosis patients by age group, 2019 year cohort (%)

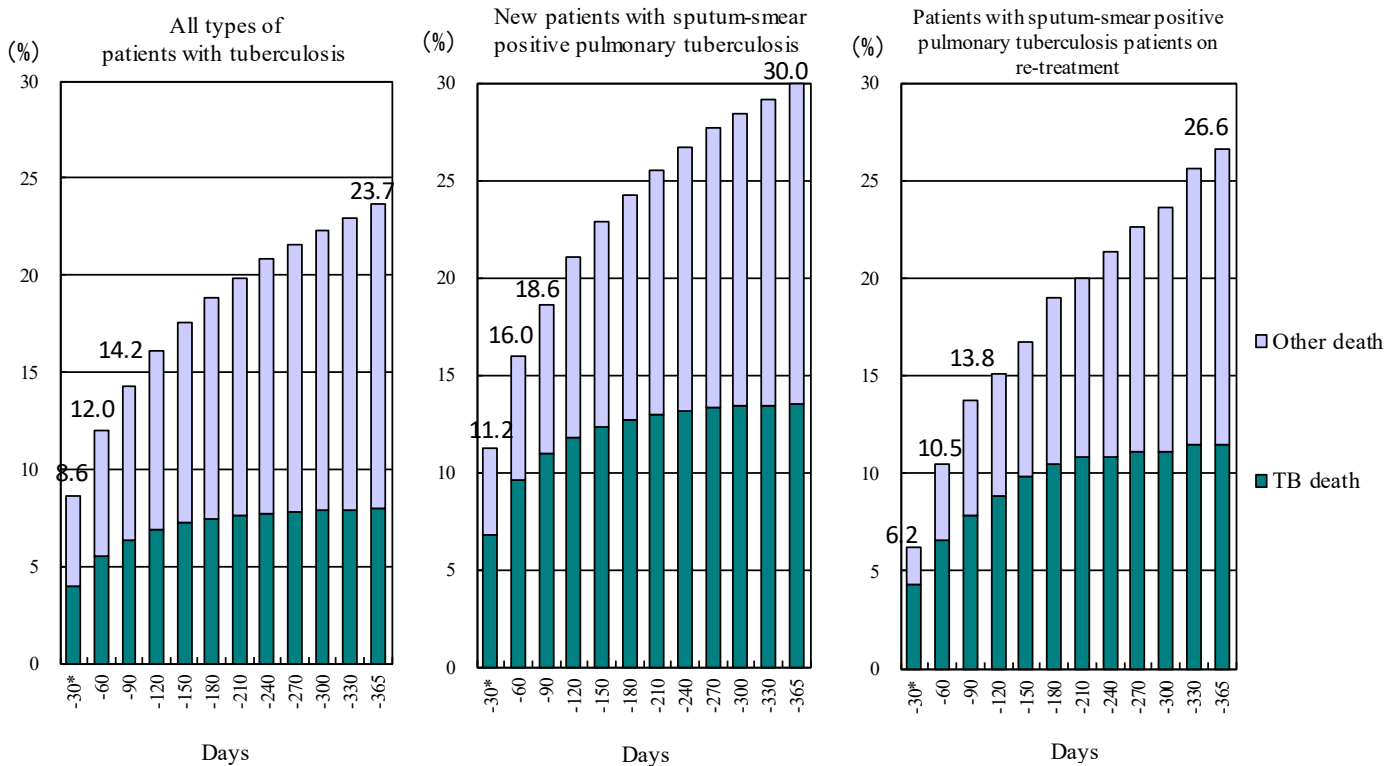


Fig. 4 Cumulative proportion of deaths by duration of treatment - Newly notified patients with tuberculosis in 2018

\* Includes patients who died before the commencement of treatment.

TB: tuberculosis