

【概況】

人口10万対率
Rate per 100,000

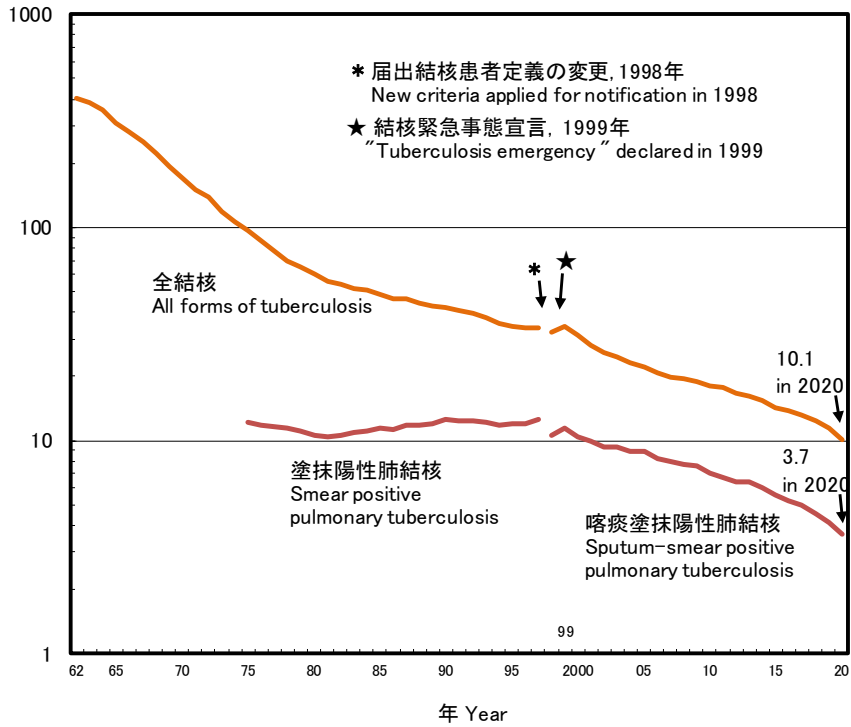


図 1 人口10万対年間新結核患者登録数(登録率)の年次推移, 1962~2020年
Fig. 1 Annual trend of tuberculosis notification rate (all forms, sputum-smear positive pulmonary tuberculosis) per 100,000 population in Japan, 1962-2020

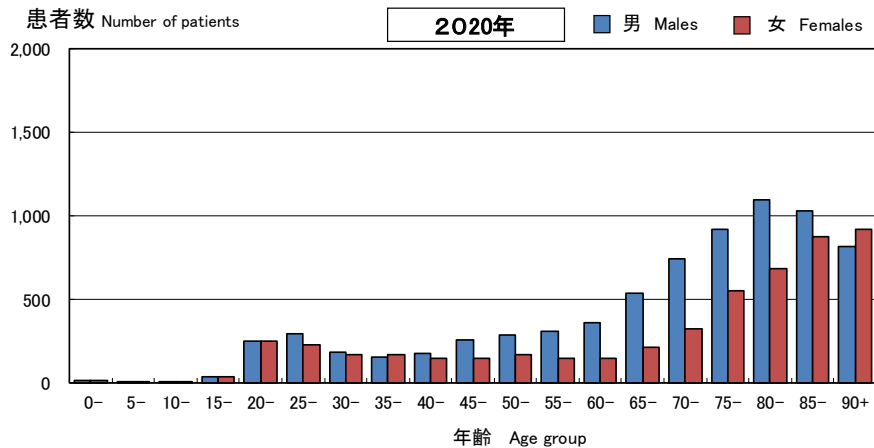
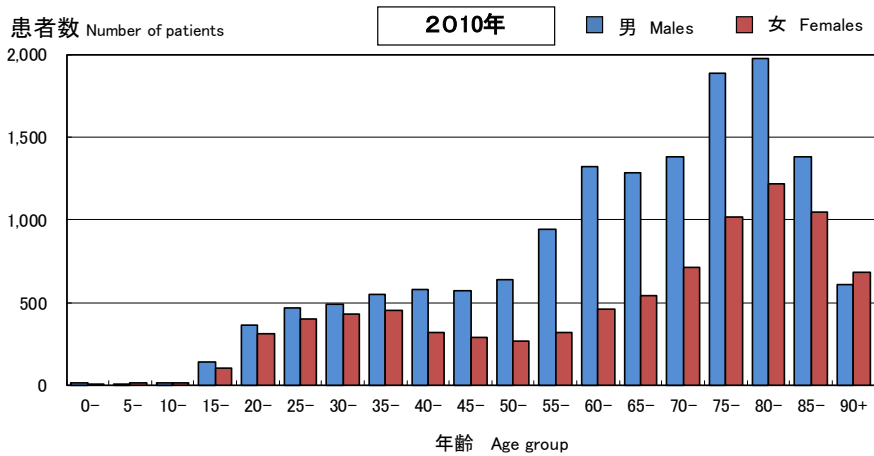


図 2 新登録結核患者数の年齢分布, 性別, 2010年・2020年
Fig. 2 Age distribution of newly notified tuberculosis patients by sex in Japan, in 2010 and in 2020

表 1 新登録結核患者数(全結核・初回治療・再治療別、肺結核・肺外結核別)、年齢階層別、2013~2020年
 Table 1 Number of newly notified tuberculosis patients (all forms, new and re-treatment, pulmonary and extra-pulmonary), by age group, in Japan, 2013-2020

年齢階層 Age group	初回治療結核 New tuberculosis																																																							
	新登録全結核患者数 Tuberculosis notifications, all forms (*1)								新全結核患者登録率 (罹患率) Tuberculosis notification rates, all forms (*2)								肺結核 Pulmonary tuberculosis																																							
	2013	2014	2015	2016	2017	2018	2019	2020	2013	2014	2015	2016	2017	2018	2019	2020	肺結核 Sputum-smear positive				その他菌陽性 肺結核 Other bacteriologically positive				喀痰塗抹陰性・ 他肺結核 Other sputum-smear negative				菌検査結果不明 Bacteriological test results unknown				肺外結核 Extra-pulmonary tuberculosis																							
総数 Total	20,495	19,615	18,280	17,625	16,789	15,590	14,460	12,739	16.1	15.4	14.4	13.9	13.3	12.3	11.5	10.1	7,584	7,153	6,676	6,281	6,031	5,485	4,966	4,413	5,174	4,937	4,819	4,777	4,645	4,417	4,193	3,434	2,041	1,918	1,638	1,709	1,588	1,474	1,322	1,118	160	173	139	106	87	82	71	57	4,274	4,255	3,976	3,844	3,599	3,400	3,241	3,171
0-14	66	49	51	59	59	51	38	52	0.4	0.3	0.3	0.4	0.4	0.3	0.2	0.3	0	1	2	2	4	4	0	2	14	11	12	12	8	7	6	7	26	18	17	20	24	27	18	23	1	4	2	5	5	4	1	4	20	13	16	18	13	9	13	9
15-19	165	168	163	190	148	158	142	75	2.7	2.8	2.8	3.1	2.5	2.7	2.4	1.3	44	31	40	45	40	39	38	19	37	54	47	48	47	34	43	25	45	50	37	69	44	54	39	21	4	4	3	4	1	2	0	0	21	15	29	14	16	20	19	8
20-29	1,196	1,188	1,127	1,235	1,231	1,273	1,164	1,027	9.1	9.2	9.0	9.8	9.8	10.1	9.2	8.1	345	321	277	269	279	278	285	249	346	356	378	420	423	444	414	336	302	277	271	320	294	311	232	172	15	18	12	19	13	10	8	7	144	164	151	160	180	185	190	220
30-39	1,317	1,235	1,101	1,004	987	885	767	686	7.9	7.7	7.1	6.5	6.6	6.0	5.4	4.8	393	323	327	269	289	250	194	185	379	371	313	320	298	276	256	196	261	255	202	207	171	163	133	123	17	16	12	7	8	4	6	5	200	202	192	157	178	153	141	152
40-49	1,496	1,440	1,363	1,228	1,159	1,034	985	741	8.3	7.8	7.5	6.5	6.1	5.5	5.3	4.0	495	453	426	363	348	307	287	221	418	416	396	360	373	306	301	206	227	229	188	198	169	157	149	111	16	20	20	12	8	5	10	5	266	234	243	228	186	202	182	170
50-59	1,665	1,514	1,351	1,295	1,268	1,150	1,054	924	10.8	9.8	8.8	8.4	8.1	7.2	6.5	5.5	606	550	501	433	414	394	340	293	429	366	357	380	381	308	290	248	207	187	156	151	164	134	147	118	15	24	14	6	8	3	7	4	270	277	234	243	219	239	199	215
60-69	2,933	2,597	2,359	2,213	2,024	1,704	1,472	1,262	15.4	14.3	13.1	12.0	11.4	10.0	9.1	8.0	1,045	936	859	792	756	639	494	462	716	656	616	566	536	455	431	335	283	253	241	205	203	171	159	131	29	23	20	26	14	9	12	8	556	547	476	498	408	322	289	258
70-79	4,359	4,028	3,757	3,407	3,187	2,995	2,810	2,547	31.4	29.4	26.9	24.5	22.0	19.7	17.6	15.7	1,572	1,465	1,323	1,184	1,169	1,049	976	875	1,064	961	966	856	830	809	796	713	340	297	257	258	236	232	177	184	30	30	26	6	16	25	12	9	1,081	1,017	974	917	771	743	695	644
80-89	5,856	5,753	5,317	5,138	4,822	4,534	4,061	3,686	76.2	72.5	66.0	60.8	55.5	51.2	45.4	40.3	2,426	2,389	2,194	2,095	1,904	1,758	1,513	1,391	1,392	1,309	1,289	1,321	1,267	1,229	1,094	896	290	290	216	228	217	179	199	181	32	30	23	19	10	15	14	15	1,354	1,401	1,280	1,219	1,192	1,147	1,082	1,053
90+	1,542	1,643	1,691	1,856	1,904	1,806	1,967	1,739	95.6	95.7	92.0	96.3	92.7	82.8	85.2	72.7	658	684	728	829	828	768	839	716	379	437	445	494	482	549	562	472	60	62	53	53	66	46	69	54	1	4	7	2	4	5	1	0	362	385	381	390	436	380	431	442

*1: All forms include new and re-treatment tuberculosis patients.

*2: 人口10万対率 Rate per 100,000 population

年齢階層 Age group	再治療結核 Re-treatment tuberculosis																																							
	肺結核 Pulmonary tuberculosis												肺外結核 Extra-pulmonary tuberculosis																											
	喀痰塗抹陽性肺結核 Sputum-smear positive				その他菌陽性肺結核 Other bacteriologically positive								喀痰塗抹陰性・他肺結核 Other sputum-smear negative				菌検査結果不明 Bacteriological test results unknown				肺外結核 Extra-pulmonary tuberculosis																			
	2013	2014	2015	2016	2017	2018	2019	2020	2013	2014	2015	2016	2017	2018	2019	2020	2013	2014	2015	2016	2017	2018	2019	2020	2013	2014	2015	2016	2017	2018	2019	2020	2013	2014	2015	2016	2017	2018	2019	2020
総数 Total	535	498	455	361	328	296	265	202	296	296	264	249	223	188	189	147	163	157	119	115	99	85	80	69	19	17	13	10	10	6	8	6	249	211	181	173	179	157	125	122
0-14	0	0	0	1	0	0	0	1	1	0	0	0	1	0	0	0	3	1	1	1	0	0	1	0	0	0	1	0	2	0	0	0	1	1	0	0	1	0	0	5
15-19	5	5	1	2	0	1	0	1	1	3	2	5	0	4	0	0	5	3	0	0	3	2	1	1	1	1	0	1	0	1	0	0	2	0	1	2	0	0	1	0
20-29	12	8	15	13	10	18	11	6	16	15	12	11	15	11	13	13	7	20	9	9	6	6	3	8	2	1	0	1	1	1	0	0	7	8	2	13	10	9	7	16
30-39	19	18	21	13	16	9	5	9	13	14	20	12	7	11	12	6	15	12	2	10	6	8	8	5	1	2	0	0	1	1	1	0	19	22	12	9	13	10	11	5
40-49	28	27	28	23	23	14	21	5	12	18	22	13	20	11	14	6	10	19	15	16	13	9	8	6	2	0	4	1	0	2	0	0	22	24	21	14	19	21	13	11
50-59	57	47	34	20	35	23	24	14	34	23	26	26	15	18	17	12	18	21	5	12	11	13	10	10	3	3	3	0	3	1	2	6	16	16	21	19	18	18	17	9
60-69	74	74	77	60	48	55	31	27	41	52	26	23	30	26	29	13	41	23	19	18	13	9	14	11	5	2	3	1	1	1	0	1	43	21	23	24	15	18	13	16
70-79	110	113	85	68	69	52	59	50	75	65	58	53	35	38	50	28	29	32	28	26	25	21	21	15	4	4	1	0	1	0	1	4	54	44	39	39	35	26	23	25
80-89	184	168	153	120	91	99	82	63	85	85	81	78	69	54	37	47	29	20	28	18	21	11	9	11	1	4	1	0	1	0	0	0	63	57	52	40	50	42	31	29
90+	46	38	41	41	36	25	32	26	18	21	17	28	31	15	17	22	6	4	9	5	3	5	5	1	0	0	0	1	0	0	2	0	12	8	10	13	18	13	9	6

表 2 新登録潜在性結核感染症登録者数、性・年齢階層別、2018～2020年

Table 2 Newly notified latent tuberculosis infection (LTBI) patients, by sex and age group, in Japan, from 2018 to 2020

年齢 Age group	2018年					2019年					2020年				
	総数 Total	性 Sex		割合 (%)	女/男 Ratio of F/M	総数 Total	性 Sex		割合 (%)	女/男 Ratio of F/M	総数 Total	性 Sex		割合 (%)	女/男 Ratio of F/M
		男 Males	女 Females				男 Males	女 Females				男 Males	女 Females		
総数 Total	7,414	3,551	3,863	100	1.1	7,684	3,707	3,977	100	1.1	5,575	2,752	2,823	100	1.0
0-4	425	182	243	5.7	1.3	411	181	230	5.3	1.3	365	166	199	6.5	1.2
5-9	103	51	52	1.4	1.0	62	27	35	0.8	1.3	58	39	19	1.0	0.5
10-14	69	34	35	0.9	1.0	53	28	25	0.7	0.9	36	18	18	0.6	1.0
15-19	164	90	74	2.2	0.8	124	67	57	1.6	0.9	73	38	35	1.3	0.9
20-24	469	237	232	6.3	1.0	449	226	223	5.8	1.0	265	130	135	4.8	1.0
25-29	489	240	249	6.6	1.0	418	188	230	5.4	1.2	249	110	139	4.5	1.3
30-34	450	208	242	6.1	1.2	342	145	197	4.5	1.4	225	91	134	4.0	1.5
35-39	351	157	194	4.7	1.2	408	173	235	5.3	1.4	229	100	129	4.1	1.3
40-44	470	187	283	6.3	1.5	489	209	280	6.4	1.3	263	115	148	4.7	1.3
45-49	481	204	277	6.5	1.4	536	220	316	7.0	1.4	378	166	212	6.8	1.3
50-54	538	216	322	7.3	1.5	615	254	361	8.0	1.4	397	166	231	7.1	1.4
55-59	483	203	280	6.5	1.4	530	234	296	6.9	1.3	363	153	210	6.5	1.4
60-64	518	256	262	7.0	1.0	504	265	239	6.6	0.9	394	215	179	7.1	0.8
65-69	636	380	256	8.6	0.7	643	365	278	8.4	0.8	512	278	234	9.2	0.8
70+	1,768	906	862	23.8	1.0	2,100	1,125	975	27.3	0.9	1,768	967	801	31.7	0.8

Ratio of F/M: Ratio of female patients to male patients
%: proportion

旧表 新登録結核患者数、および潜在性結核感染症治療対象者数、登録月別、2020年
Previous table Newly notified tuberculosis cases by registered month, 2020

登録月 Registered month	活動性結核 Active tuberculosis									(別掲) 潜在性結 核感染症 LTBI* on treatment	
	総数 All active tuberculosis	肺結核活動性 Active pulmonary tuberculosis							菌陰性・ その他 Bacillary negative or bacillary results unknown		肺外結核 活動性 Extra- pulmonary
		総数 All active pulmonary tuberculosis	喀痰塗抹陽性 Sputum smear positive			その他結 核菌陽性 Other bacillary positive	菌陰性・ その他 Bacillary negative or bacillary results unknown	肺外結核 活動性 Extra- pulmonary			
			総数 All sputum smear positive	初回治療 New	再治療 Retreatment						
総数 Total	12,739	9,446	4,615	4,413	202	3,581	1,250	3,293	5,575		
1月 Jan.	1,112	879	394	378	16	359	126	233	487		
2月 Feb.	995	751	355	335	20	295	101	244	454		
3月 Mar.	1,135	863	388	364	24	348	127	272	484		
4月 Apr.	973	737	336	312	24	302	99	236	412		
5月 May	957	675	337	324	13	247	91	282	401		
6月 Jun.	1,116	784	406	383	23	281	97	332	562		
7月 Jul.	1,116	821	432	411	21	292	97	295	474		
8月 Aug.	1,142	855	439	424	15	307	109	287	464		
9月 Sep.	1,073	770	397	382	15	273	100	303	447		
10月 Oct.	1,116	835	415	407	8	314	106	281	496		
11月 Nov.	948	691	358	347	11	246	87	257	417		
12月 Dec.	1,056	785	358	346	12	317	110	271	477		

* LTBI: Latent Tuberculosis Infection. These are not included in the number of active tuberculosis.

表 3.1 新登録結核患者数、結核病類別、性・年齢階層別、1998～2020年
Table 3.1 Newly notified tuberculosis patients by affected organ, sex and age group, in Japan, from 1998 to 2020

性・年齢 2020年 Sex・Age-group in 2020	全結核 Tuberculosis notifications, all forms	肺結核 Pulmonary tuberculosis		肺外結核 Extra-pulmonary tuberculosis																	
		肺 Lungs	気管支 Bronchi	咽頭・ 喉頭 Pharynx / Larynx	粟粒 Miliary	胸膜炎 Pleurais	膿胸 Empyema	肺門・縦隔 リンパ節 Hilar・ Mediastinal lymph node	他の リンパ節 Other lymph nodes	髄膜炎 Menin- ges	腸 Intes- tines	脊椎 Verte- brae	他の 骨関節 Other joints / bones	腎・尿路 Kidneys / Urinary tracts	性器 Genitals	皮膚 Skins	眼 Eyes	耳 Ears	腹膜炎 Perito- neum	心膜炎 Pericar- dium	他の 臓器 Other organs
総数 Total	12,739	9,906 (77.8)	93 (0.7)	32 (0.3)	653 (5.1)	2,356 (18.5)	30 (0.2)	132 (1.0)	704 (5.5)	129 (1.0)	197 (1.5)	122 (1.0)	89 (0.7)	57 (0.4)	23 (0.2)	61 (0.5)	30 (0.2)	12 (0.1)	151 (1.2)	48 (0.4)	120 (0.9)
男 Male	7,507	6,032 (80.4)	38 (0.5)	15 (0.2)	256 (3.4)	1,550 (20.6)	21 (0.3)	74 (1.0)	225 (3.0)	67 (0.9)	88 (1.2)	57 (0.8)	40 (0.5)	33 (0.4)	17 (0.2)	20 (0.3)	14 (0.2)	3 (0.0)	76 (1.0)	35 (0.5)	63 (0.8)
女 Female	5,232	3,874 (74.0)	55 (1.1)	17 (0.3)	397 (7.6)	806 (15.4)	9 (0.2)	58 (1.1)	479 (9.2)	62 (1.2)	109 (2.1)	65 (1.2)	49 (0.9)	24 (0.5)	6 (0.1)	41 (0.8)	16 (0.3)	9 (0.2)	75 (1.4)	13 (0.2)	57 (1.1)
0-14	52	39 (75.0)	0 (0.0)	0 (0.0)	1 (1.9)	0 (0.0)	0 (0.0)	11 (21.2)	2 (3.8)	1 (1.9)	1 (1.9)	0 (0.0)	0 (0.0)	0 (0.0)	0 (0.0)	1 (1.9)	0 (0.0)	0 (0.0)	0 (0.0)	0 (0.0)	1 (1.9)
15-19	75	67 (89.3)	0 (0.0)	0 (0.0)	0 (0.0)	5 (6.7)	0 (0.0)	2 (2.7)	4 (5.3)	0 (0.0)	1 (1.3)	0 (0.0)	0 (0.0)	0 (0.0)	0 (0.0)	1 (1.3)	0 (0.0)	0 (0.0)	0 (0.0)	0 (0.0)	1 (1.3)
20-29	1,027	801 (78.0)	11 (1.1)	2 (0.2)	16 (1.6)	79 (7.7)	4 (0.4)	28 (2.7)	152 (14.8)	4 (0.4)	15 (1.5)	10 (1.0)	13 (1.3)	0 (0.0)	2 (0.2)	5 (0.5)	3 (0.3)	0 (0.0)	12 (1.2)	1 (0.1)	5 (0.5)
30-39	686	538 (78.4)	9 (1.3)	2 (0.3)	15 (2.2)	72 (10.5)	2 (0.3)	15 (2.2)	78 (11.4)	4 (0.6)	17 (2.5)	2 (0.3)	8 (1.2)	2 (0.3)	2 (0.3)	1 (0.1)	3 (0.4)	0 (0.0)	19 (2.8)	0 (0.0)	5 (0.7)
40-49	741	569 (76.8)	6 (0.8)	5 (0.7)	13 (1.8)	88 (11.9)	2 (0.3)	11 (1.5)	53 (7.2)	13 (1.8)	27 (3.6)	4 (0.5)	3 (0.4)	4 (0.5)	2 (0.3)	6 (0.8)	3 (0.4)	1 (0.1)	9 (1.2)	2 (0.3)	10 (1.3)
50-59	924	716 (77.5)	8 (0.9)	5 (0.5)	24 (2.6)	110 (11.9)	3 (0.3)	11 (1.2)	66 (7.1)	16 (1.7)	26 (2.8)	6 (0.6)	7 (0.8)	4 (0.4)	3 (0.3)	3 (0.3)	9 (1.0)	2 (0.2)	11 (1.2)	1 (0.1)	17 (1.8)
60-69	1,262	1,010 (80.0)	9 (0.7)	6 (0.5)	29 (2.3)	182 (14.4)	3 (0.2)	13 (1.0)	79 (6.3)	16 (1.3)	29 (2.3)	12 (1.0)	4 (0.3)	8 (0.6)	3 (0.2)	7 (0.6)	5 (0.4)	0 (0.0)	9 (0.7)	4 (0.3)	13 (1.0)
70-79	2,547	1,957 (76.8)	20 (0.8)	3 (0.1)	116 (4.6)	477 (18.7)	3 (0.1)	21 (0.8)	130 (5.1)	31 (1.2)	49 (1.9)	38 (1.5)	20 (0.8)	23 (0.9)	9 (0.4)	12 (0.5)	5 (0.2)	2 (0.1)	28 (1.1)	15 (0.6)	33 (1.3)
80-89	3,686	2,817 (76.4)	27 (0.7)	6 (0.2)	316 (8.6)	878 (23.8)	8 (0.2)	15 (0.4)	113 (3.1)	30 (0.8)	27 (0.7)	41 (1.1)	29 (0.8)	13 (0.4)	2 (0.1)	20 (0.5)	2 (0.1)	5 (0.1)	43 (1.2)	23 (0.6)	27 (0.7)
90+	1,739	1,392 (80.0)	3 (0.2)	3 (0.2)	123 (7.1)	465 (26.7)	5 (0.3)	5 (0.3)	27 (1.6)	14 (0.8)	5 (0.3)	9 (0.5)	5 (0.3)	3 (0.2)	0 (0.0)	5 (0.3)	0 (0.0)	2 (0.1)	20 (1.2)	2 (0.1)	8 (0.5)
年 Year	総数 Total																				
1998	41,033	33,981 (82.8)	-	-	505 (1.2)	5,125 (12.5)	251 (0.6)	136 (0.3)	1,469 (3.6)	154 (0.4)	335 (0.8)	385 (0.9)	328 (0.8)	227 (0.6)	78 (0.2)	100 (0.2)	12 (0.0)	25 (0.1)	-	-	692 (1.7)
1999	43,818	36,190 (82.6)	-	-	603 (1.4)	5,586 (12.7)	221 (0.5)	143 (0.3)	1,538 (3.5)	163 (0.4)	345 (0.8)	334 (0.8)	300 (0.7)	179 (0.4)	96 (0.2)	94 (0.2)	13 (0.0)	28 (0.1)	-	-	684 (1.6)
2000	39,384	32,338 (82.1)	-	-	597 (1.5)	5,108 (13.0)	202 (0.5)	123 (0.3)	1,432 (3.6)	158 (0.4)	356 (0.9)	319 (0.8)	272 (0.7)	181 (0.5)	72 (0.2)	123 (0.3)	16 (0.0)	38 (0.1)	-	-	656 (1.7)
2001	35,489	28,868 (81.3)	-	-	642 (1.8)	4,840 (13.6)	162 (0.5)	102 (0.3)	1,368 (3.9)	177 (0.5)	275 (0.8)	276 (0.8)	274 (0.8)	172 (0.5)	72 (0.2)	104 (0.3)	11 (0.0)	25 (0.1)	-	-	619 (1.7)
2002	32,828	26,472 (80.6)	-	-	626 (1.9)	4,666 (14.2)	152 (0.5)	84 (0.3)	1,269 (3.9)	188 (0.6)	323 (1.0)	299 (0.9)	222 (0.7)	148 (0.5)	66 (0.2)	100 (0.3)	19 (0.1)	29 (0.1)	-	-	544 (1.7)
2003	31,638	25,478 (80.5)	-	-	639 (2.0)	4,539 (14.3)	142 (0.4)	83 (0.3)	1,341 (4.2)	149 (0.5)	276 (0.9)	268 (0.8)	223 (0.7)	144 (0.5)	47 (0.1)	87 (0.3)	15 (0.0)	28 (0.1)	-	-	570 (1.8)
2004	29,736	23,829 (80.1)	-	-	617 (2.1)	4,491 (15.1)	125 (0.4)	70 (0.2)	1,293 (4.3)	160 (0.5)	299 (1.0)	275 (0.9)	220 (0.7)	112 (0.4)	53 (0.2)	95 (0.3)	13 (0.0)	30 (0.1)	-	-	564 (1.9)
2005	28,319	22,655 (80.0)	-	-	585 (2.1)	4,338 (15.3)	115 (0.4)	88 (0.3)	1,151 (4.1)	180 (0.6)	296 (1.0)	233 (0.8)	201 (0.7)	130 (0.5)	37 (0.1)	98 (0.3)	11 (0.0)	33 (0.1)	-	-	536 (1.9)
2006	26,384	20,856 (79.0)	-	-	616 (2.3)	4,192 (15.9)	97 (0.4)	79 (0.3)	1,191 (4.5)	127 (0.5)	263 (1.0)	248 (0.9)	231 (0.9)	112 (0.4)	40 (0.2)	109 (0.4)	9 (0.0)	24 (0.1)	-	-	554 (2.1)
2007	25,311	20,264 (80.1)	108 (0.4)	31 (0.1)	602 (2.4)	4,134 (16.3)	75 (0.3)	57 (0.2)	1,186 (4.7)	153 (0.6)	328 (1.3)	232 (0.9)	190 (0.8)	108 (0.4)	34 (0.1)	92 (0.4)	19 (0.1)	18 (0.1)	92 (0.4)	61 (0.2)	281 (1.1)
2008	24,760	19,780 (79.9)	117 (0.5)	43 (0.2)	570 (2.3)	4,001 (16.2)	78 (0.3)	68 (0.3)	1,194 (4.8)	171 (0.7)	292 (1.2)	273 (1.1)	170 (0.7)	121 (0.5)	34 (0.1)	92 (0.4)	13 (0.1)	29 (0.1)	144 (0.6)	80 (0.3)	181 (0.7)
2009	24,170	19,278 (79.8)	121 (0.5)	36 (0.1)	604 (2.5)	3,940 (16.3)	63 (0.3)	73 (0.3)	1,221 (5.1)	162 (0.7)	321 (1.3)	241 (1.0)	182 (0.8)	100 (0.4)	23 (0.1)	121 (0.5)	26 (0.1)	22 (0.1)	168 (0.7)	88 (0.4)	179 (0.7)
2010	23,261	18,735 (80.5)	127 (0.5)	53 (0.2)	598 (2.6)	3,959 (17.0)	48 (0.2)	74 (0.3)	1,158 (5.0)	138 (0.6)	330 (1.4)	239 (1.0)	159 (0.7)	88 (0.4)	35 (0.2)	97 (0.4)	29 (0.1)	12 (0.1)	154 (0.7)	76 (0.3)	171 (0.7)
2011	22,681	17,969 (79.2)	129 (0.6)	57 (0.3)	695 (3.1)	3,929 (17.3)	52 (0.2)	70 (0.3)	1,199 (5.3)	156 (0.7)	317 (1.4)	250 (1.1)	145 (0.6)	83 (0.4)	22 (0.1)	89 (0.4)	27 (0.1)	21 (0.1)	173 (0.8)	89 (0.4)	187 (0.8)
2012	21,283	16,826 (79.1)	107 (0.5)	46 (0.2)	608 (2.9)	3,653 (17.2)	63 (0.3)	134 (0.6)	1,038 (4.9)	152 (0.7)	348 (1.6)	255 (1.2)	157 (0.7)	82 (0.4)	20 (0.1)	97 (0.5)	34 (0.2)	16 (0.1)	176 (0.8)	80 (0.4)	166 (0.8)
2014	19,615	15,586 (79.5)	100 (0.5)	37 (0.2)	642 (3.3)	3,421 (17.4)	41 (0.2)	137 (0.7)	978 (5.0)	184 (0.9)	281 (1.4)	212 (1.1)	132 (0.7)	68 (0.3)	15 (0.1)	101 (0.5)	30 (0.2)	15 (0.1)	207 (1.1)	67 (0.3)	153 (0.8)
2015	18,280	14,581 (79.8)	119 (0.7)	43 (0.2)	631 (3.5)	3,277 (17.9)	46 (0.3)	128 (0.7)	813 (4.4)	166 (0.9)	248 (1.4)	192 (1.1)	98 (0.5)	73 (0.4)	21 (0.1)	87 (0.5)	20 (0.1)	19 (0.1)	176 (1.0)	69 (0.4)	134 (0.7)
2016	17,625	14,014 (79.5)	119 (0.7)	44 (0.2)	633 (3.6)	3,141 (17.8)	30 (0.2)	121 (0.7)	835 (4.7)	164 (0.9)	264 (1.5)	194 (1.1)	101 (0.6)	83 (0.5)	19 (0.1)	80 (0.5)	25 (0.1)	15 (0.1)	184 (1.0)	81 (0.5)	149 (0.8)
2017	16,789	13,469 (80.2)	97 (0.6)	30 (0.2)	687 (4.1)	2,868 (17.1)	31 (0.2)	140 (0.8)	779 (4.6)	164 (1.0)	220 (1.3)	150 (0.9)	91 (0.5)	53 (0.3)	19 (0.1)	80 (0.5)	19 (0.1)	18 (0.1)	178 (1.1)	73 (0.4)	161 (1.0)
2018	15,590	12,505 (80.2)	84 (0.5)	31 (0.2)	616 (4.0)	2,640 (16.9)	27 (0.2)	107 (0.7)	761 (4.9)	150 (1.0)	228 (1.5)	155 (1.0)	97 (0.6)	67 (0.4)	16 (0.1)	79 (0.5)	21 (0.1)	10 (0.1)	148 (0.9)	65 (0.4)	129 (0.8)
2019	14,460	11,584 (80.1)	76 (0.5)	24 (0.2)	639 (4.4)	2,571 (18.5)	28 (0.2)	111 (0.8)	669 (4.6)	137 (0.9)	227 (1.6)	135 (0.9)	73 (0.5)	51 (0.4)	18 (0.1)	63 (0.4)	25 (0.2)	12 (0.1)	152 (1.1)	50 (0.3)	125 (0.9)
2020	12,739	9,906 (77.8)	93 (0.7)	32 (0.3)	653 (5.1)	2,356 (18.5)	30 (0.2)	132 (1.0)	704 (5.5)	129 (1.0)	197 (1.5)	122 (1.0)	89 (0.7)	57 (0.4)	23 (0.2)	61 (0.5)	30 (0.2)	12 (0.1)	151 (1.2)	48 (0.4)	120 (0.9)

注1: 結核病類は重複あり。 Note1: Cases having multiple organs are counted independently.

注2: 括弧内は各性・年齢階層、登録年の新登録患者数に対する割合(%)。 Note2: Numbers in brackets indicate the proportion out of the total number of newly notified tuberculosis cases (all forms) for each sex and age group.

表 3.2 粟粒結核患者数・割合、性・年齢階層別、2004～2020年

Table 3.2 Number and proprotio of miliary tuberculosis by age group and sex, 2004-2020

年 year	年齢総数 Age group total	0～9歳 0-9 yrs		10～19歳 10-19 yrs		20～29歳 20-29 yrs		30～39歳 30-39 yrs		40～49歳 40-49 yrs		50～59歳 50-59 yrs		60～69歳 60-69 yrs		70～79歳 70-79 yrs		80歳以上 80 yrs+	
		数 n	割合(%)	数 n	割合(%)	数 n	割合(%)	数 n	割合(%)	数 n	割合(%)	数 n	割合(%)	数 n	割合(%)	数 n	割合(%)	数 n	割合(%)
男女計 Total	2004	617 (2.1)	0 (0.0)	6 (1.8)	19 (0.8)	22 (0.8)	24 (1.0)	44 (1.1)	82 (1.8)	199 (2.9)	221 (3.6)								
	2005	585 (2.1)	1 (1.3)	3 (0.9)	13 (0.6)	38 (1.4)	25 (1.1)	41 (1.1)	77 (1.8)	180 (2.8)	207 (3.2)								
	2006	616 (2.3)	1 (1.9)	1 (0.4)	19 (0.9)	24 (1.0)	27 (1.3)	42 (1.3)	84 (2.2)	173 (2.8)	245 (3.9)								
	2007	602 (2.4)	0 (0.0)	2 (0.9)	10 (0.5)	20 (0.9)	23 (1.2)	26 (0.9)	75 (2.0)	190 (3.4)	256 (4.0)								
	2008	570 (2.3)	1 (1.4)	1 (0.5)	17 (0.9)	18 (0.8)	21 (1.1)	40 (1.4)	64 (1.7)	162 (2.9)	246 (3.7)								
	2009	604 (2.5)	3 (6.4)	2 (0.9)	6 (0.4)	26 (1.2)	25 (1.4)	38 (1.5)	68 (1.9)	164 (3.2)	272 (3.9)								
	2010	598 (2.6)	0 (0.0)	2 (0.7)	11 (0.7)	20 (1.0)	22 (1.2)	23 (1.1)	80 (2.2)	139 (2.8)	301 (4.4)								
	2011	695 (3.1)	1 (1.9)	2 (1.1)	18 (1.3)	21 (1.2)	28 (1.5)	27 (1.3)	58 (1.8)	155 (3.2)	385 (5.3)								
	2012	608 (2.9)	0 (0.0)	2 (1.1)	4 (0.3)	10 (0.7)	20 (1.3)	28 (1.6)	53 (1.8)	147 (3.2)	344 (4.8)								
	2013	635 (3.1)	0 (0.0)	4 (2.1)	9 (0.6)	21 (1.6)	15 (1.0)	23 (1.4)	59 (2.1)	151 (3.5)	353 (4.8)								
	2014	642 (3.3)	1 (3.1)	2 (1.1)	7 (0.6)	15 (1.2)	12 (0.8)	23 (1.5)	53 (2.0)	133 (3.3)	396 (5.4)								
	2015	631 (3.5)	0 (0.0)	2 (1.1)	11 (1.0)	8 (0.7)	24 (1.8)	17 (1.3)	36 (1.5)	153 (4.1)	380 (5.4)								
	2016	633 (3.6)	1 (2.7)	0 (0.0)	8 (0.6)	16 (1.6)	12 (1.0)	26 (2.0)	50 (2.3)	135 (4.0)	385 (5.5)								
	2017	687 (4.1)	3 (7.3)	3 (1.8)	8 (0.6)	18 (1.8)	11 (0.9)	24 (1.9)	45 (2.2)	123 (3.9)	452 (6.7)								
	2018	616 (4.0)	1 (3.3)	2 (1.1)	13 (1.0)	11 (1.2)	16 (1.5)	23 (2.0)	41 (2.4)	120 (4.0)	389 (6.1)								
	2019	639 (4.4)	2 (7.4)	2 (1.3)	15 (1.3)	12 (1.6)	17 (1.7)	21 (2.0)	35 (2.4)	118 (4.2)	417 (6.9)								
	2020	653 (5.1)	1 (2.8)	0 (0.0)	16 (1.6)	15 (2.2)	13 (1.8)	24 (2.6)	29 (2.3)	116 (4.6)	439 (8.1)								
男 Males	2004	282 (1.5)	0 (0.0)	2 (1.3)	10 (0.8)	15 (0.9)	21 (1.3)	32 (1.1)	49 (1.5)	78 (1.7)	75 (2.1)								
	2005	269 (1.5)	1 (2.2)	2 (1.2)	7 (0.6)	24 (1.5)	15 (1.0)	23 (0.8)	47 (1.5)	83 (2.0)	67 (1.8)								
	2006	309 (1.8)	0 (0.0)	1 (0.9)	12 (1.1)	17 (1.3)	23 (1.6)	34 (1.3)	55 (2.0)	78 (1.9)	89 (2.4)								
	2007	250 (1.5)	0 (0.0)	2 (1.8)	6 (0.6)	13 (1.0)	14 (1.1)	16 (0.7)	45 (1.7)	76 (2.0)	78 (2.0)								
	2008	241 (1.5)	0 (0.0)	1 (0.9)	13 (1.4)	12 (1.0)	17 (1.4)	26 (1.3)	39 (1.5)	65 (1.8)	68 (1.8)								
	2009	211 (1.4)	0 (0.0)	1 (1.0)	2 (0.2)	18 (1.6)	18 (1.5)	21 (2.2)	26 (1.0)	57 (1.7)	68 (1.7)								
	2010	232 (1.6)	0 (0.0)	2 (1.3)	7 (0.8)	11 (1.1)	19 (1.6)	14 (0.9)	40 (1.5)	54 (1.7)	85 (2.1)								
	2011	283 (2.0)	1 (4.2)	0 (0.0)	12 (1.6)	14 (1.6)	17 (1.5)	18 (1.2)	34 (1.5)	66 (2.1)	121 (2.9)								
	2012	243 (1.9)	0 (0.0)	1 (1.0)	4 (0.6)	7 (0.8)	17 (1.7)	22 (1.7)	33 (1.6)	46 (1.6)	113 (2.8)								
	2013	234 (1.9)	0 (0.0)	2 (2.0)	2 (0.3)	14 (2.0)	7 (0.8)	12 (1.0)	34 (1.7)	52 (1.8)	111 (2.7)								
	2014	249 (2.1)	0 (0.0)	1 (1.1)	3 (0.5)	7 (1.0)	7 (0.8)	9 (0.9)	41 (2.2)	66 (2.5)	115 (2.8)								
	2015	231 (2.1)	0 (0.0)	1 (1.1)	6 (1.0)	7 (1.2)	19 (2.3)	11 (1.2)	20 (1.2)	65 (2.6)	102 (2.7)								
	2016	246 (2.3)	1 (4.8)	0 (0.0)	5 (0.7)	11 (2.0)	7 (0.9)	14 (1.6)	26 (1.6)	60 (2.7)	122 (3.2)								
	2017	264 (2.6)	1 (3.8)	2 (1.9)	3 (0.4)	11 (2.1)	5 (0.7)	17 (1.9)	27 (1.9)	60 (2.8)	138 (3.7)								
	2018	258 (2.8)	0 (0.0)	2 (2.0)	9 (1.2)	9 (1.9)	11 (1.7)	18 (2.3)	26 (2.2)	56 (2.9)	127 (3.7)								
	2019	244 (2.9)	1 (8.3)	1 (1.2)	12 (1.7)	6 (1.4)	14 (2.4)	15 (2.1)	16 (1.6)	62 (3.3)	117 (3.7)								
	2020	256 (3.4)	1 (5.0)	0 (0.0)	7 (1.3)	12 (3.5)	9 (2.1)	16 (2.6)	17 (1.9)	52 (3.1)	142 (4.8)								
女 Females	2004	335 (3.2)	0 (0.0)	4 (2.2)	9 (0.7)	7 (0.6)	3 (0.4)	12 (1.2)	33 (2.4)	121 (5.3)	146 (5.5)								
	2005	316 (3.1)	0 (0.0)	1 (0.6)	6 (0.5)	14 (1.3)	10 (1.5)	18 (2.0)	30 (2.5)	97 (4.5)	140 (5.3)								
	2006	307 (3.3)	1 (4.0)	0 (0.0)	7 (0.7)	7 (0.7)	4 (0.6)	8 (1.0)	29 (2.8)	95 (4.6)	156 (6.1)								
	2007	352 (3.9)	0 (0.0)	0 (0.0)	4 (0.4)	7 (0.7)	9 (1.4)	10 (1.4)	30 (2.9)	114 (5.9)	178 (6.7)								
	2008	329 (3.6)	1 (3.3)	0 (0.0)	4 (0.4)	6 (0.6)	4 (0.6)	14 (2.0)	25 (2.4)	97 (5.2)	178 (6.4)								
	2009	393 (4.3)	3 (10.7)	1 (0.8)	4 (0.5)	8 (0.8)	7 (1.0)	17 (2.3)	42 (4.2)	107 (5.9)	204 (6.7)								
	2010	366 (4.2)	0 (0.0)	0 (0.0)	4 (0.6)	9 (1.0)	3 (0.5)	9 (1.5)	40 (4.0)	85 (4.9)	216 (7.3)								
	2011	412 (4.7)	0 (0.0)	2 (2.0)	6 (0.9)	7 (0.8)	11 (1.7)	9 (1.5)	24 (2.5)	89 (5.2)	264 (8.5)								
	2012	365 (4.4)	0 (0.0)	1 (1.2)	0 (0.0)	3 (0.4)	3 (0.5)	6 (1.2)	20 (2.3)	101 (6.1)	231 (7.1)								
	2013	401 (5.0)	0 (0.0)	2 (2.2)	7 (1.2)	7 (1.2)	8 (1.4)	11 (2.1)	25 (3.0)	99 (6.4)	242 (7.4)								
	2014	393 (5.2)	1 (6.3)	1 (1.1)	4 (0.7)	8 (1.4)	5 (0.9)	14 (2.8)	12 (1.6)	67 (4.9)	281 (8.7)								
	2015	400 (5.6)	0 (0.0)	1 (1.2)	5 (1.0)	1 (0.2)	5 (1.0)	6 (1.4)	16 (2.5)	88 (6.8)	278 (8.8)								
	2016	387 (5.5)	0 (0.0)	0 (0.0)	3 (0.6)	5 (1.1)	5 (1.0)	12 (2.9)	24 (3.8)	75 (6.4)	263 (8.1)								
	2017	423 (6.4)	2 (13.3)	1 (1.6)	5 (0.9)	7 (1.5)	6 (1.3)	7 (1.8)	18 (3.1)	63 (5.9)	314 (10.4)								
	2018	358 (5.7)	1 (10.0)	0 (0.0)	4 (0.7)	2 (0.5)	5 (1.3)	5 (1.3)	15 (3.0)	64 (6.0)	262 (8.9)								
	2019	395 (6.7)	1 (6.7)	1 (1.5)	3 (0.6)	6 (1.7)	3 (0.7)	6 (1.7)	19 (4.1)	56 (6.1)	300 (10.4)								
	2020	397 (7.6)	0 (0.0)	0 (0.0)	9 (1.9)	3 (0.9)	4 (1.3)	8 (2.5)	12 (3.3)	64 (7.3)	297 (12.0)								

注1: 他結核病類との重複あり。 Note1: Cases having multiple organs are counted independently.

注2: 割合は各年齢階層新登録患者数に対する割合。 Note2: % indicate proportion out of the total number of newly notified tuberculosis cases for each age group.

【外国生れ】

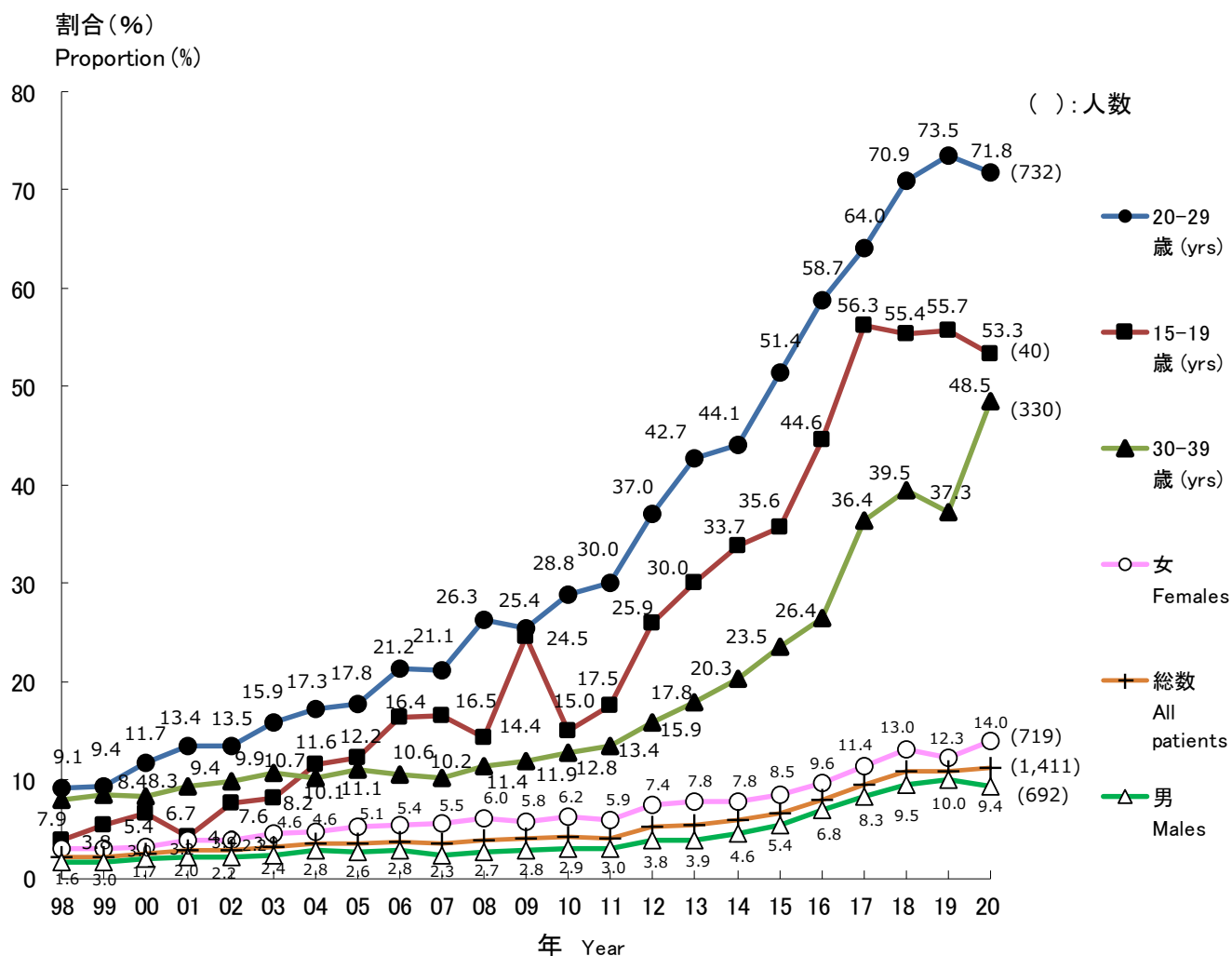


図 3 新登録結核患者に占める外国生まれ結核患者割合の推移, 性別・特定年齢階層別, 1998~2020年

Fig. 3 Annual trend of proportion of foreign-borns among newly notified tuberculosis patients, by sex and age group, from 1998 to 2020

割合: 国籍または出生国不明を除く。

Those whose country of birth is unknown are excluded from the numerator.

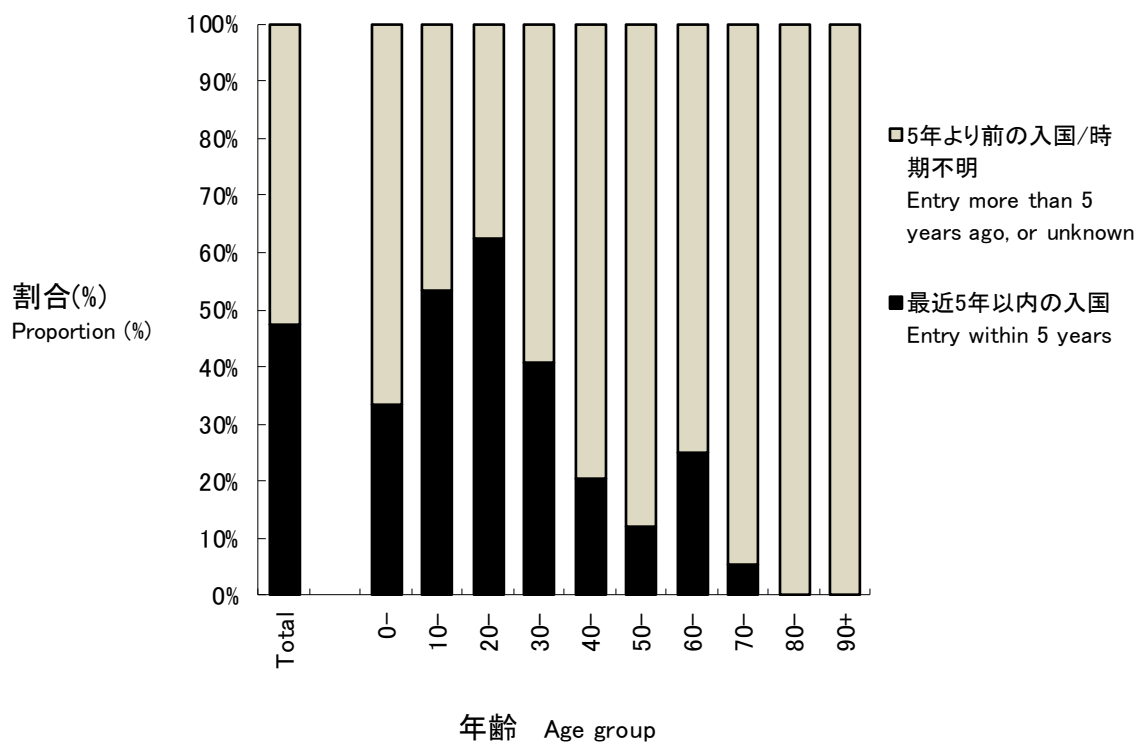


図 4 外国生まれ結核患者の入国時期別割合、年齢階層別、2020年
 Fig. 4 Proportion of foreign-born tuberculosis patients, by age group and time of entry to Japan, in 2020

表 4.1 新登録全結核患者の発生動向年次推移, 国籍または出生国別, 性別, 1998~2020年
 Table 4.1 Annual trend of newly notified tuberculosis patients by nationality or country of birth, and by sex, from 1998 to 2020

暦年 Year	新登録全結核 患者数 Number of newly notified tuberculosis patients, all forms	日本生まれ Born in Japan	外国籍もしくは 外国生まれ Foreign nationalities or Foreign borns (*1)	国籍または 出生国不明 Nationalities or country of birth unknown	外国生まれ 割合 (%) Proportion of foreign borns (%)(*2)	性 Sex (*3)		女-男比 Ratio of Females to Males
						男 Males	女 Females	
1998	41,033	34,382	739	5,912	2.1	365	374	1.0
1999	43,818	37,094	821	5,903	2.2	415	406	1.0
2000	39,384	33,720	837	4,827	2.4	436	401	0.9
2001	35,489	30,305	866	4,318	2.8	442	424	1.0
2002	32,828	28,667	824	3,337	2.8	411	413	1.0
2003	31,638	27,665	906	3,067	3.2	433	473	1.1
2004	29,736	26,205	931	2,600	3.4	479	452	0.9
2005	28,319	25,247	923	2,149	3.5	438	485	1.1
2006	26,384	23,505	920	1,959	3.8	444	476	1.1
2007	25,311	23,451	842	1,018	3.5	364	478	1.3
2008	24,760	23,163	945	652	3.9	416	529	1.3
2009	24,170	22,808	938	424	4.0	414	524	1.3
2010	23,261	21,976	952	333	4.2	424	528	1.2
2011	22,681	21,372	921	388	4.1	416	505	1.2
2012	21,283	19,555	1,069	659	5.2	474	595	1.3
2013	20,495	18,589	1,064	842	5.4	468	596	1.3
2014	19,615	17,727	1,101	787	5.8	531	570	1.1
2015	18,280	16,396	1,164	720	6.6	581	583	1.0
2016	17,625	15,504	1,338	783	7.9	693	645	0.9
2017	16,789	14,533	1,530	726	9.5	804	726	0.9
2018	15,590	13,570	1,667	353	10.9	860	807	0.9
2019	14,460	12,567	1,541	352	10.9	829	712	0.9
2020	12,739	11,080	1,411	248	11.3	692	719	1.0

*1: 2011年までは外国籍結核患者数、2012年以降外国生まれ結核患者数。
 Number of tuberculosis patients with foreign nationalities until 2011, number of foreign-born patients afterwards.

*2: 2011年までは外国籍患者割合、2012年以降外国生まれ患者割合(国籍または出生国不明を除く)。
 Proportion of Tuberculosis patients with foreign nationalities until 2011, proportion of foreign-born patients afterwards, excluding those of unknown nationality or country of birth.

*3: 外国籍または外国生まれにおける性別。
 Sex distribution among foreign nationalities or foreign-borns.

表 4.2 新登録外国人結核患者数・割合、年齢階層別、1998～2020年

Table 4.2 Annual trend of foreign-borns by age group, 1998-2020

年 year	年齢 Age group	0～9歳 0-9 yrs		10～19歳 10-19 yrs		20～29歳 20-29 yrs		30～39歳 30-39 yrs		40～49歳 40-49 yrs		50～59歳 50-59 yrs		60～69歳 60-69 yrs		70～79歳 70-79 yrs		80歳以上 80 yrs+	
		総数 Total	数n 割合(%)	数n 割合(%)	数n 割合(%)	数n 割合(%)	数n 割合(%)	数n 割合(%)	数n 割合(%)	数n 割合(%)	数n 割合(%)	数n 割合(%)	数n 割合(%)	数n 割合(%)	数n 割合(%)	数n 割合(%)	数n 割合(%)	数n 割合(%)	数n 割合(%)
1998	739	6	(0.8)	20	(2.7)	300	(40.6)	215	(29.1)	83	(11.2)	44	(6.0)	23	(3.1)	29	(3.9)	19	(2.6)
1999	821	11	(1.3)	27	(3.3)	319	(38.9)	241	(29.4)	89	(10.8)	54	(6.6)	27	(3.3)	35	(4.3)	18	(2.2)
2000	837	14	(1.7)	26	(3.1)	357	(42.7)	235	(28.1)	92	(11.0)	49	(5.9)	23	(2.7)	27	(3.2)	14	(1.7)
2001	866	4	(0.5)	17	(2.0)	361	(41.7)	249	(28.8)	110	(12.7)	55	(6.4)	27	(3.1)	25	(2.9)	18	(2.1)
2002	824	5	(0.6)	24	(2.9)	345	(41.9)	249	(30.2)	81	(9.8)	47	(5.7)	26	(3.2)	24	(2.9)	23	(2.8)
2003	906	9	(1.0)	25	(2.8)	399	(44.0)	268	(29.6)	98	(10.8)	38	(4.2)	22	(2.4)	27	(3.0)	20	(2.2)
2004	931	4	(0.4)	32	(3.4)	402	(43.2)	250	(26.9)	107	(11.5)	59	(6.3)	28	(3.0)	27	(2.9)	22	(2.4)
2005	923	5	(0.5)	37	(4.0)	378	(41.0)	273	(29.6)	105	(11.4)	62	(6.7)	26	(2.8)	16	(1.7)	21	(2.3)
2006	920	5	(0.5)	34	(3.7)	409	(44.5)	234	(25.4)	113	(12.3)	59	(6.4)	35	(3.8)	11	(1.2)	20	(2.2)
2007	842	6	(0.7)	35	(4.2)	390	(46.3)	224	(26.6)	102	(12.1)	43	(5.1)	15	(1.8)	12	(1.4)	15	(1.8)
2008	945	4	(0.4)	27	(2.9)	468	(49.5)	237	(25.1)	114	(12.1)	41	(4.3)	25	(2.6)	10	(1.1)	19	(2.0)
2009	938	2	(0.2)	50	(5.3)	427	(45.5)	243	(25.9)	103	(11.0)	41	(4.4)	30	(3.2)	20	(2.1)	22	(2.3)
2010	952	5	(0.5)	41	(4.3)	438	(46.0)	242	(25.4)	114	(12.0)	39	(4.1)	35	(3.7)	18	(1.9)	20	(2.1)
2011	921	5	(0.5)	30	(3.3)	419	(45.5)	226	(24.5)	126	(13.7)	53	(5.8)	20	(2.2)	19	(2.1)	23	(2.5)
2012	1,069	4	(0.4)	45	(4.2)	468	(43.8)	237	(22.2)	181	(16.9)	63	(5.9)	33	(3.1)	17	(1.6)	21	(2.0)
2013	1,064	3	(0.3)	52	(4.9)	494	(46.4)	225	(21.1)	147	(13.8)	65	(6.1)	30	(2.8)	25	(2.3)	23	(2.2)
2014	1,101	5	(0.5)	59	(5.4)	511	(46.4)	243	(22.1)	151	(13.7)	71	(6.4)	26	(2.4)	16	(1.5)	19	(1.7)
2015	1,164	3	(0.3)	63	(5.4)	565	(48.5)	252	(21.6)	134	(11.5)	74	(6.4)	27	(2.3)	19	(1.6)	27	(2.3)
2016	1,338	5	(0.4)	89	(6.7)	712	(53.2)	258	(19.3)	139	(10.4)	66	(4.9)	33	(2.5)	15	(1.1)	21	(1.6)
2017	1,530	5	(0.3)	87	(5.7)	774	(50.6)	349	(22.8)	143	(9.3)	89	(5.8)	48	(3.1)	17	(1.1)	18	(1.2)
2018	1,667	4	(0.2)	95	(5.7)	896	(53.7)	344	(20.6)	151	(9.1)	91	(5.5)	35	(2.1)	23	(1.4)	28	(1.7)
2019	1,541	7	(0.5)	81	(5.3)	851	(55.2)	283	(18.4)	147	(9.5)	76	(4.9)	41	(2.7)	27	(1.8)	28	(1.8)
2020	1,411	6	(0.4)	43	(3.0)	732	(51.9)	330	(23.4)	141	(10.0)	83	(5.9)	44	(3.1)	19	(1.3)	13	(0.9)

注1:割合は新登録外国人結核患者総数に対する各年齢階層患者数の割合

Note1: % indicate proportion out of the total number of newly notified foreign-born tuberculosis cases for each age group.

注2: 2011年までは外国国籍患者数。2012年以降は外国生まれ患者数

Note2: "Foreign nationalities" until 2011, "Foreign-born" since 2012.

表 5 外国生まれ結核患者及び薬剤耐性結核の数および割合, 出生国別, 入国時期別 2020年
Table 5 Number and proportion of foreign-born tuberculosis patients by country of birth and time of entry to Japan, 2020

総数 Total	薬剤耐性 Drug resistance								最近5年以内入国 Entry within 5 years		薬剤耐性 Drug resistance										
	多剤耐性 MDR		INH 耐性 Any INH resistance		RFP耐性 Any RFP resistance		1 剤以上耐性 Any resistance*				多剤耐性 MDR		INH 耐性 Any INH resistance		RFP耐性 Any RFP resistance		1 剤以上耐性 Any resistance*				
n	(%)									n	(%)										
総数 Total	1,411	(100.0)	24	(100.0)	76	(100.0)	28	(100.0)	122	(100.0)	総数 Total	669	(100.0)	13	(100.0)	39	(100.0)	15	(100.0)	66	(100.0)
フィリピン Philippines	315	(22.3)	5	(20.8)	12	(15.8)	6	(21.4)	15	(12.3)	ベトナム Vietnam	181	(27.1)	3	(23.1)	16	(41.0)	4	(26.7)	31	(47.0)
ベトナム Vietnam	287	(20.3)	5	(20.8)	25	(32.9)	6	(21.4)	49	(40.2)	フィリピン Philippines	111	(16.6)	2	(15.4)	4	(10.3)	2	(13.3)	5	(7.6)
中国 China	152	(10.8)	8	(33.3)	15	(19.7)	10	(35.7)	25	(20.5)	インドネシア Indonesia	93	(13.9)			3	(7.7)			4	(6.1)
インドネシア Indonesia	147	(10.4)			3	(3.9)			5	(4.1)	ネパール Nepal	77	(11.5)	2	(15.4)	3	(7.7)	2	(13.3)	4	(6.1)
ネパール Nepal	143	(10.1)	2	(8.3)	6	(7.9)	2	(7.1)	7	(5.7)	中国 China	65	(9.7)	4	(30.8)	6	(15.4)	5	(33.3)	12	(18.2)
ミャンマー Myanmar	88	(6.2)	2	(8.3)	5	(6.6)	2	(7.1)	5	(4.1)	ミャンマー Myanmar	46	(6.9)	1	(7.7)	4	(10.3)	1	(6.7)	4	(6.1)
インド India	37	(2.6)							1	(0.8)	インド India	21	(3.1)							1	(1.5)
タイ Thailand	30	(2.1)	1	(4.2)	1	(1.3)	1	(3.6)	1	(0.8)	タイ Thailand	14	(2.1)	1	(7.7)	1	(2.6)	1	(6.7)	1	(1.5)
カンボジア Cambodia	20	(1.4)			1	(1.3)			1	(0.8)	カンボジア Cambodia	12	(1.8)			1	(2.6)			1	(1.5)
韓国 Republic of Korea	20	(1.4)																			
ブラジル Brazil	18	(1.3)			1	(1.3)			2	(1.6)											
モンゴル Mongolia	18	(1.3)			2	(2.6)			3	(2.5)											
その他 Others	77	(5.5)	1	(4.2)	2	(2.6)	1	(3.6)	5	(4.1)	その他 Others	41	(6.1)			1	(2.6)			3	(4.5)
国名不明 Unknown	59	(4.2)			3	(3.9)			3	(2.5)	国名不明 Unknown	8	(1.2)								

国名: 10名以上患者発生届けのあった国名を掲載 Only those countries with more than ten tuberculosis cases are listed.

MDR: Multi-drug resistant, i.e., resistant to at least INH and RFP INH: isoniazid RFP: rifampicin

*: INH, RFP, SM EBの4剤のうちのいずれかに耐性 resistant to either INH, RFP, SM, or EB

5年以上前入国/時期不明 Entry more than 5 years ago, or unknown		薬剤耐性 Drug resistance								
		多剤耐性 MDR		INH 耐性 Any INH resistance		RFP耐性 Any RFP resistance		1 剤以上耐性 Any resistance*		
n	(%)									
総数 Total	742	(100.0)	11	(100.0)	37	(100.0)	13	(100.0)	56	(100.0)
フィリピン Philippines	204	(27.5)	3	(27.3)	8	(21.6)	4	(30.8)	10	(17.9)
ベトナム Vietnam	106	(14.3)	2	(18.2)	9	(24.3)	2	(15.4)	18	(32.1)
中国 China	87	(11.7)	4	(36.4)	9	(24.3)	5	(38.5)	13	(23.2)
ネパール Nepal	66	(8.9)			3	(8.1)			3	(5.4)
インドネシア Indonesia	54	(7.3)							1	(1.8)
ミャンマー Myanmar	42	(5.7)	1	(9.1)	1	(2.7)	1	(7.7)	1	(1.8)
韓国 Republic of Korea	18	(2.4)								
インド India	16	(2.2)								
タイ Thailand	16	(2.2)								
ブラジル Brazil	11	(1.5)							1	(1.8)
モンゴル Mongolia	10				2	(5.4)			2	(3.6)
その他 Others	61	(8.2)	1	(9.1)	2	(5.4)	1	(7.7)	4	(7.1)
国名不明 Unknown	51	(6.9)			3	(8.1)			3	(5.4)

表 6 職業分類別外国生まれ結核患者数、性別・年齢階層別、2020年
Table 6 Occupation of foreign-born tuberculosis patients by sex and age group, in Japan, in 2020

年齢 Age group	総数 Total	接客業 Service trade workers	医療職 Health care workers	教員・ 保育士 Teacher s / Nursery staff	乳幼児 ・児童 Infants / Children	生徒・ 学生 Student s	他常用 勤 労者 Other regular employe es	他臨時 雇 ・日雇 Other temporar y/day laborer	他自営・ 自由業 Other self- employe d	家事 従業者 Houseke epers	無職・ その他 Unemplo -yed / Others	不明 Unknow n
		(%)	(%)	(%)	(%)	(%)	(%)	(%)	(%)	(%)	(%)	(%)
総数 Total	1,411 (100)	68 (5)	44 (3)	8 (1)	9 (1)	244 (17)	576 (41)	105 (7)	18 (1)	26 (2)	269 (19)	44 (3)
男 Males	692 (100)	25 (4)	7 (1)	2 (0)	7 (1)	125 (18)	336 (49)	44 (6)	14 (2)	2 (0)	114 (16)	16 (2)
女 Females	719 (100)	43 (6)	37 (5)	6 (1)	2 (0)	119 (17)	240 (33)	61 (8)	4 (1)	24 (3)	155 (22)	28 (4)
0-14	9 (100)	-	-	-	9 (100)	-	-	-	-	-	-	-
15-19	40 (100)	-	-	-	-	25 -	8 (20)	3 (8)	-	-	1 (3)	3 (8)
20-24	388 (100)	10 (3)	9 (2)	-	-	136 (35)	167 (43)	16 (4)	2 (1)	2 (1)	43 (11)	3 (1)
25-29	344 (100)	13 (4)	13 (4)	4 (1)	-	63 (18)	156 (45)	24 (7)	4 (1)	5 (1)	49 (14)	13 (4)
30-34	202 (100)	8 (4)	9 (4)	-	-	17 (8)	100 (50)	23 (11)	1 (0)	3 (1)	36 (18)	5 (2)
35-39	128 (100)	15 (12)	4 (3)	2 (2)	-	2 (2)	55 (43)	13 (10)	1 (1)	3 (2)	28 (22)	5 (4)
40-44	86 (100)	7 (8)	4 (5)	-	-	1 (1)	36 (42)	8 (9)	3 (3)	5 (6)	15 (17)	7 (8)
45-49	55 (100)	7 (13)	2 (4)	-	-	-	17 (31)	8 (15)	2 (4)	5 (9)	11 (20)	3 (5)
50-54	55 (100)	4 (7)	2 (4)	1 (2)	-	-	17 (31)	4 (7)	1 (2)	2 (4)	23 (42)	1 (2)
55-59	28 (100)	3 (11)	-	-	-	-	11 (39)	3 (11)	1 (4)	1 (4)	8 (29)	1 (4)
60+	76 (100)	1 (1)	1 (1)	1 (1)	-	-	9 (12)	3 (4)	3 (4)	(0)	55 (72)	3 (4)

旧表 外国人新登録結核患者の発生動向, 暦年別, 年齢階層別, 1998~2020年
 Previous table Trend of newly notified foreign nationals with TB by year and age group, 1998-2020

暦年 Year	外国人 All foreigners	年齢 Age group							20歳代割 合(%) Percentage of 20-29 yrs in total
		0-14	15-19	20-29	30-39	40-49	50-59	60+	
1998	739	11	15	300	215	83	44	71	40.6
1999	821	13	25	319	241	89	54	80	38.9
2000	837	16	24	357	235	92	49	64	42.7
2001	866	6	15	361	249	110	55	70	41.7
2002	824	6	23	345	249	81	47	73	41.9
2003	906	12	22	399	268	98	38	69	44.0
2004	931	6	30	402	250	107	59	77	43.2
2005	923	9	33	378	273	105	62	63	41.0
2006	920	6	33	409	234	113	59	66	44.5
2007	842	9	32	390	224	102	43	42	46.3
2008	945	5	26	468	237	114	41	54	49.5
2009	938	3	49	427	243	103	41	72	45.5
2010	952	9	37	438	242	114	39	73	46.0
2011	921	8	27	419	226	126	53	62	45.5
2012	1069	7	42	468	237	181	63	71	43.8
2013	1064	7	48	494	225	147	65	78	46.4
2014	1101	8	56	511	243	151	71	61	46.4
2015	1164	9	57	565	252	134	74	73	48.5
2016	1338	12	82	712	258	139	66	69	53.2
2017	1530	11	81	774	349	143	89	83	50.6
2018	1667	12	87	896	344	151	91	86	53.7
2019	1541	10	78	851	283	147	76	96	55.2
2020	1411	9	40	732	330	141	83	76	51.9

2011年までは外国籍結核患者数、2012年以降外国生まれ結核患者数

Number of tuberculosis patients with foreign nationalities until 2011, number of foreign-born patients afterwards.

旧表 都道府県・政令指定都市別外国人結核患者数, 2020年
Previous table Distribution of foreign nationals with tuberculosis by prefecture and designated city, 2020

	新登録患者数 Newly notified patients	外国生まれ Foreign born	割合 Proportion (%)
全国 Japan	12,739	1,411	11.1
群馬県 Gunma	152	46	30.3
静岡県 Shizuoka	178	43	24.2
愛知県 Aichi	546	111	20.3
浜松市 Hamamatsu city	96	19	19.8
相模原市 Sagami city	53	10	18.9
山梨県 Yamanashi	48	9	18.8
岡山市 Okayama city	59	11	18.6
富山県 Toyama	71	13	18.3
静岡市 Shizuoka city	74	13	17.6
岡山県 Okayama	94	16	17.0
長野県 Nagano	138	23	16.7
三重県 Mie	175	29	16.6
茨城県 Ibaraki	287	47	16.4
香川県 Kagawa	95	15	15.8
栃木県 Tochigi	179	28	15.6
滋賀県 Shiga	122	19	15.6
福岡市 Fukuoka city	149	23	15.4
広島県 Hiroshima	160	24	15.0
千葉県 Chiba	518	77	14.9
岐阜県 Gifu	265	38	14.3
石川県 Ishikawa	99	14	14.1
仙台市 Sendai city	66	9	13.6
埼玉県 Saitama	566	76	13.4
福島県 Fukushima	122	16	13.1
東京都 Tokyo	1589	205	12.9
名古屋市 Nagoya city	378	45	11.9
横浜市 Yokohama city	357	42	11.8
京都市 Kyoto city	173	20	11.6
熊本県 Kumamoto	106	11	10.4
神戸市 Kobe city	213	22	10.3
福井県 Fukui	63	6	9.5
熊本市 Kumamoto city	64	6	9.4
山口県 Yamaguchi	141	13	9.2
沖縄県 Okinawa	186	16	8.6
大阪市 Osaka city	578	49	8.5
大分県 Oita	107	9	8.4
奈良県 Nara	133	11	8.3
さいたま市 Saitama city	109	9	8.3
高知県 Kochi	49	4	8.2
北九州市 Kitakyushu city	123	10	8.1
宮城県 Miyagi	69	5	7.2
川崎市 Kawasaki city	153	11	7.2
山形県 Yamagata	70	5	7.1
佐賀県 Saga	87	6	6.9
福岡県 Fukuoka	240	16	6.7
愛媛県 Ehime	122	8	6.6
神奈川県 Kanagawa	245	16	6.5
新潟県 Niigata	95	6	6.3

外国人患者が6.0%以上(国籍不明を含む)の県・市を掲載。政令指定都市は県に含まず(別掲)
Those prefectures and designated cities with 6% or more tuberculosis cases with foreign nationals are listed.

The figures of prefectures do not include those cases registered to designated cities in the respective prefecture, if applicable.

E.g., the figure of Kanagawa prefecture does not include those of Yokohama and Kawasaki cities.