

【患者発見】

表1 新登録結核患者の発見方法、2007～2020年

Table1 Proportion of mode of detection among newly notified tuberculosis patients, 2007-2020																									
年 Year	新登録 患者 Newly notified TB patients	個別 健診 Individual medical checkup		定期健診 Mass screening								接触者健診 Contact examination				医療機関 Medical institutions						その他 Others		不明 Unknown	
				学校 Schools		住民 Residents		職場 Employees		施設 Facilities		家族 Family		その他 Others		有症状受診(*1) Outpatients with TB symptoms(*1)		入院中 Inpatients with other diseases		通院中 Outpatients with other diseases					
	<i>n</i>	<i>n</i>	%	<i>n</i>	%	<i>n</i>	%	<i>n</i>	%	<i>n</i>	%	<i>n</i>	%	<i>n</i>	%	<i>n</i>	%	<i>n</i>	%	<i>n</i>	%	<i>n</i>	%		
2007	25,311	537	2.1	217	0.9	636	2.5	1,931	7.6	145	0.6	355	1.4	370	1.5	16,997	67.2	2,031	8.0	1,611	6.4	340	1.3	141	0.6
2008	24,760	639	2.6	195	0.8	486	2.0	1,877	7.6	144	0.6	325	1.3	410	1.7	15,347	62.0	2,681	10.8	2,100	8.5	316	1.3	240	1.0
2009	24,170	611	2.5	197	0.8	550	2.3	1,749	7.2	136	0.6	324	1.3	311	1.3	14,864	61.5	2,752	11.4	2,220	9.2	301	1.2	155	0.6
2010	23,261	507	2.2	244	1.0	544	2.3	1,618	7.0	128	0.6	313	1.3	350	1.5	13,901	59.8	2,792	12.0	2,305	9.9	333	1.4	226	1.0
2011	22,681	470	2.1	188	0.8	497	2.2	1,531	6.8	126	0.6	354	1.6	482	2.1	13,177	58.1	2,916	12.9	2,515	11.1	330	1.5	95	0.4
2012	21,283	409	1.9	163	0.8	498	2.3	1,424	6.7	121	0.6	315	1.5	374	1.8	12,284	57.7	2,941	13.8	2,312	10.9	357	1.7	85	0.4
2013	20,495	413	2.0	172	0.8	455	2.2	1,246	6.1	89	0.4	314	1.5	333	1.6	11,978	58.4	2,745	13.4	2,306	11.3	336	1.6	108	0.5
2014	19,615	344	1.8	201	1.0	404	2.1	1,221	6.2	92	0.5	303	1.5	333	1.7	11,441	58.3	2,591	13.2	2,210	11.3	328	1.7	147	0.7
2015	18,280	319	1.7	192	1.1	359	2.0	1,147	6.3	78	0.4	248	1.4	263	1.4	10,556	57.7	2,630	14.4	2,043	11.2	144	0.8	127	0.7
2016	17,625	319	1.8	250	1.4	355	2.0	1,056	6.0	98	0.6	211	1.2	409	2.3	10,073	57.2	2,471	14.0	1,971	11.2	146	0.8	98	0.6
2017	16,789	331	2.0	259	1.5	336	2.0	1,088	6.5	70	0.4	256	1.5	323	1.9	9,338	55.6	2,528	15.1	1,900	11.3	150	0.9	73	0.4
2018	15,590	290	1.9	226	1.4	288	1.8	1,077	6.9	74	0.5	239	1.5	314	2.0	8,617	55.3	2,317	14.9	1,798	11.5	139	0.9	56	0.4
2019	14,460	278	1.9	226	1.6	314	2.2	983	6.8	76	0.5	210	1.5	358	2.5	7,746	53.6	2,288	15.8	1,690	11.7	104	0.7	62	0.4
2020	12,739	207	1.6	80	0.6	203	1.6	787	6.2	34	0.3	190	1.5	199	1.6	7,096	55.7	2,102	16.5	1,583	12.4	124	1.0	50	0.4
2020年																									
Age group																									
0～9	36	0	0.0	0	0.0	0	0.0	0	0.0	0	0.0	18	50.0	1	2.8	10	27.8	1	2.8	1	2.8	5	13.9	0	0.0
10～19	91	1	1.1	9	9.9	0	0.0	7	7.7	0	0.0	15	16.5	5	5.5	47	51.6	2	2.2	2	2.2	1	1.1	0	0.0
20～29	1,027	20	1.9	65	6.3	3	0.3	244	23.8	3	0.3	12	1.2	43	4.2	578	56.3	14	1.4	22	2.1	4	0.4	7	0.7
30～39	686	15	2.2	6	0.9	1	0.1	162	23.6	3	0.4	12	1.7	21	3.1	396	57.7	23	3.4	37	5.4	6	0.9	1	0.1
40～49	741	25	3.4	0	0.0	8	1.1	126	17.0	0	0.0	18	2.4	27	3.6	428	57.8	39	5.3	57	7.7	5	0.7	5	0.7
50～59	924	28	3.0	0	0.0	14	1.5	135	14.6	3	0.3	29	3.1	24	2.6	511	55.3	62	6.7	100	10.8	8	0.9	3	0.3
60～69	1,262	34	2.7	0	0.0	36	2.9	77	6.1	4	0.3	25	2.0	33	2.6	656	52.0	142	11.3	209	16.6	25	2.0	7	0.6
70～79	2,547	44	1.7	0	0.0	77	3.0	35	1.4	7	0.3	36	1.4	19	0.7	1,357	53.3	440	17.3	471	18.5	33	1.3	5	0.2
80～89	3,686	31	0.8	0	0.0	50	1.4	1	0.0	8	0.2	20	0.5	15	0.4	2,099	56.9	873	23.7	536	14.5	25	0.7	15	0.4
90～	1,739	9	0.5	0	0.0	14	0.8	0	0.0	6	0.3	5	0.3	11	0.6	1,014	58.3	506	29.1	148	8.5	12	0.7	7	0.4

TB: tuberculosis

*1 有症状:咳・痰・血痰・喀血等の「呼吸器症状」や、喘鳴、胸痛、背部痛、息切れ、発熱、寝汗、全身倦怠、体重減少等の「その他の症状」を有する場合。

TB symptoms: Respiratory symptoms such as cough, sputum expectoration, bloody sputum, and hemoptysis; and other symptoms such as wheezing, chest pain, back pain, dyspnea, fever, night sweating, fatigue tendency, and weight loss. Total number: 20 cases from other group examination, 64 cases from health examination during registration.

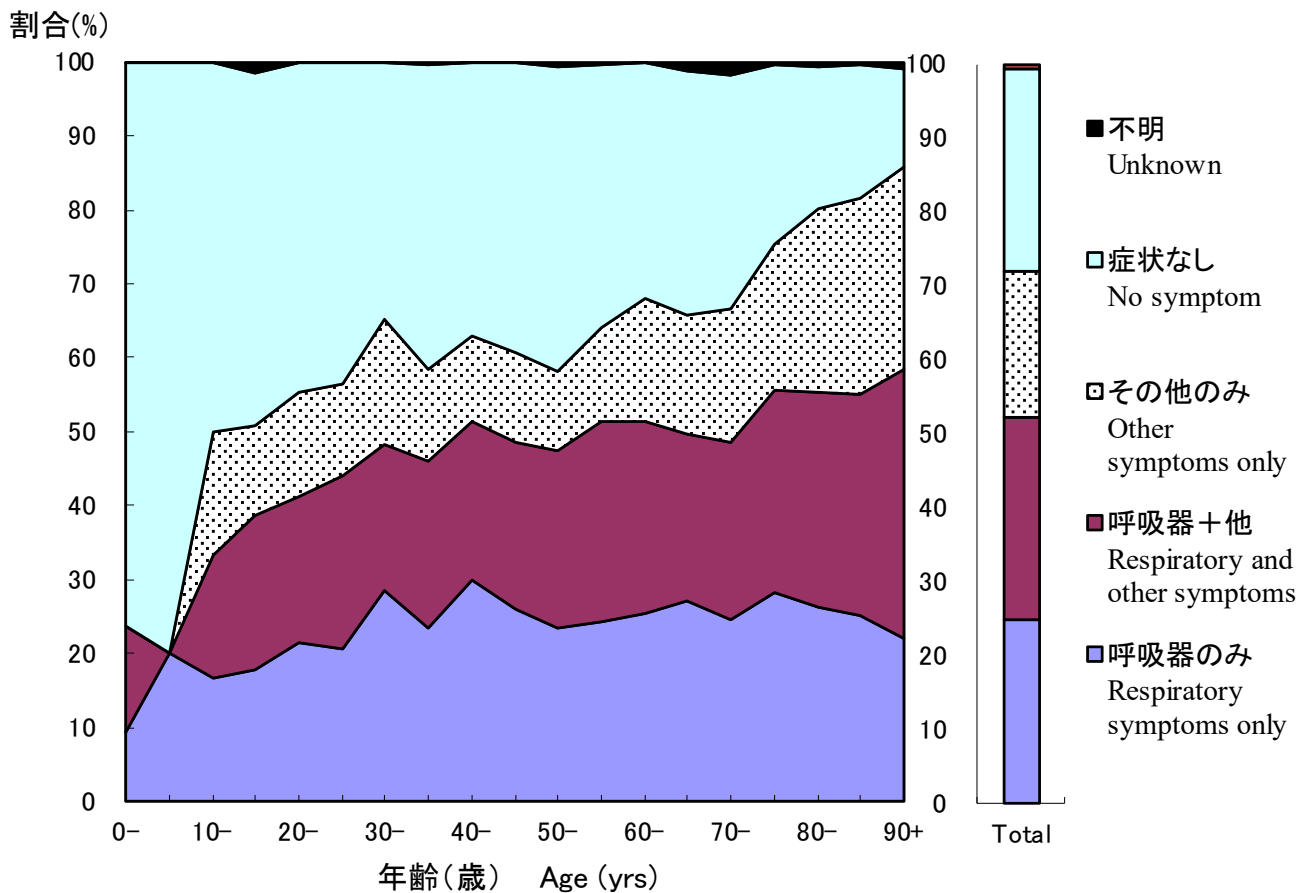


図 1 新登録肺結核中年齢5歳階層別症状の有無、2020年

Fig.1 Proportion of symptoms among newly notified pulmonary tuberculosis patients by 5- years age group, in 2020

呼吸器症状は咳、痰、血痰、喀血を含む。その他の症状は喘鳴、胸痛、背部痛、息切れ、発熱、寝汗、全身倦怠、体重減少を含む。

Respiratory symptoms include cough, sputum expectoration, bloody sputum, and hemoptysis. Other symptoms include wheezing, chest pain, back pain, dyspnea, fever, night sweating, fatigue tendency, and weight loss.

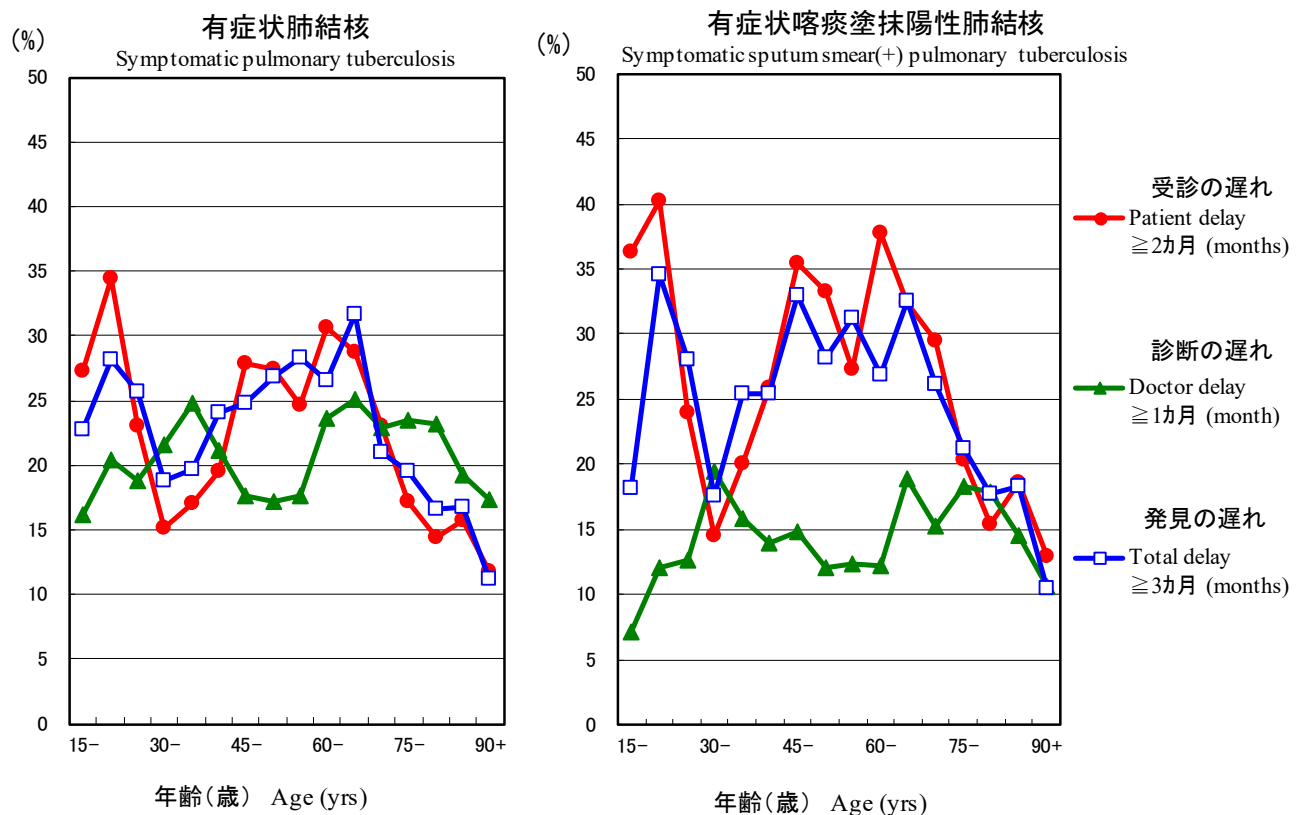


図 2 新登録有症状肺結核中年齢5歳階層別発見の遅れの割合、2020年

Fig.2 Proportion of patient delay, doctor delay and total delay among symptomatic pulmonary tuberculosis patients by 5-year age group, in 2020

受診の遅れ:「発病の時期」(結核の症状が初めて自覚された時期)から「初診の時期」(結核による症状を訴えて初めて医療機関を受診した時期)までの期間が2カ月以上である場合。

Patient delay: time interval from the onset of symptoms to the first visit to a medical institution of 2 months or longer

診断の遅れ:「初診の時期」から「診断の時期」(結核と診断された時期)までの期間が1カ月以上である場合。

Doctor delay: time interval from the first visit to a medical institution to the diagnosis of tuberculosis of 1 month or longer

発見の遅れ:「発病の時期」から「診断の時期」までの期間が3カ月以上である場合。

Total delay: time interval from the onset of symptoms to the diagnosis of tuberculosis is 3 months or longer

旧表 新登録結核患者の発見方法、年齢階層別、2020年

Previous table Proportion of mode of detection among newly notified TB patients by age group, 2020

年齢階層 Age groups	新登録患者 Newly notified TB patients	個別健診 Individual medical checkup	定期健診 Mass screening				接触者健診 Contact examination		医療機関 Medical institutions			その他 Others	不明 Unknown
			学校 Schools	住民 Residents	職場 Employees	施設 Facilities	家族 Family	その他 Others	有症状受診 Outpatients with TB symptoms (*1)	入院中 Inpatients with other diseases	通院中 Outpatients with other diseases		
全結核 All forms of TB													
総数 Total	12,739	1.6	0.6	1.6	6.2	0.3	1.5	1.6	55.7	16.5	12.4	1.0	0.4
0-14	52	0.0	0.0	0.0	0.0	0.0	46.2	1.9	30.8	5.8	3.8	11.5	0.0
15-19	75	1.3	12.0	0.0	9.3	0.0	12.0	6.7	54.7	0.0	1.3	0.0	0.0
20-24	505	2.0	9.5	0.6	20.6	0.0	1.4	5.5	54.9	1.6	1.6	0.4	0.8
25-29	522	1.9	3.3	0.0	26.8	0.6	1.0	2.9	57.7	1.1	2.7	0.4	0.6
30-34	360	2.5	1.4	0.0	23.3	0.3	1.4	3.6	59.4	2.8	4.4	0.8	0.0
35-39	326	1.8	0.3	0.3	23.9	0.6	2.1	2.5	55.8	4.0	6.4	0.9	0.3
40-44	329	3.0	0.0	1.5	16.7	0.0	2.4	2.7	61.4	4.9	6.4	0.3	0.3
45-49	412	3.6	0.0	0.7	17.2	0.0	2.4	4.4	54.9	5.6	8.7	1.0	1.0
50-54	464	3.4	0.0	1.3	16.4	0.2	3.2	4.3	53.2	4.7	11.4	1.1	0.0
55-59	460	2.6	0.0	1.7	12.8	0.4	3.0	0.9	57.4	8.7	10.2	0.7	0.7
60-64	511	3.1	0.0	2.7	9.8	0.0	2.5	3.1	53.2	8.0	13.5	2.2	0.6
65-69	751	2.4	0.0	2.9	3.6	0.5	1.6	2.3	51.1	13.4	18.6	1.9	0.5
70-74	1,074	2.0	0.0	3.4	2.9	0.1	2.0	0.7	52.5	15.1	18.7	1.7	0.2
75-79	1,473	1.6	0.0	2.8	0.3	0.4	1.0	0.8	53.8	18.9	18.3	1.0	0.2
80-84	1,781	1.0	0.0	1.7	0.0	0.1	0.7	0.3	57.0	22.6	15.2	0.6	0.2
85-89	1,905	0.7	0.0	1.0	0.1	0.3	0.4	0.5	56.9	24.7	14.0	0.8	0.6
90+	1,739	0.5	0.0	0.8	0.0	0.3	0.3	0.6	58.3	29.1	8.5	0.7	0.4
(再掲)喀痰塗抹陽性肺結核 (Re-count) Sputum smear positive pulmonary TB													
総数 Total	4,615	1.1	0.3	1.1	3.8	0.3	0.5	0.6	63.3	16.4	10.7	0.8	0.3
0-14	3	0.0	0.0	0.0	0.0	0.0	0.0	0.0	66.7	33.3	0.0	0.0	0.0
15-19	20	5.0	10.0	0.0	5.0	0.0	0.0	0.0	75.0	0.0	0.0	0.0	0.0
20-24	127	2.4	5.5	0.8	12.6	0.0	0.8	3.9	70.1	2.4	0.8	0.8	0.0
25-29	128	0.8	1.6	0.0	15.6	0.0	0.8	0.0	78.1	0.0	2.3	0.0	0.8
30-34	101	1.0	1.0	0.0	17.8	1.0	1.0	4.0	70.3	1.0	1.0	2.0	0.0
35-39	93	0.0	0.0	0.0	21.5	0.0	0.0	1.1	61.3	6.5	7.5	0.0	1.1
40-44	97	1.0	0.0	0.0	12.4	0.0	0.0	1.0	76.3	3.1	6.2	0.0	0.0
45-49	129	3.9	0.0	0.8	13.2	0.0	0.8	0.8	65.9	4.7	8.5	0.0	1.6
50-54	150	1.3	0.0	0.0	13.3	0.7	1.3	0.7	68.0	4.7	8.0	0.7	0.0
55-59	157	3.2	0.0	0.0	8.9	0.6	0.0	0.0	75.2	3.8	6.4	0.0	0.6
60-64	200	2.5	0.0	1.0	6.0	0.0	1.0	2.0	66.0	5.5	12.5	2.0	0.5
65-69	289	1.7	0.0	1.0	3.8	1.0	0.3	0.7	57.4	14.2	16.6	1.4	0.0
70-74	385	0.8	0.0	2.6	3.1	0.3	0.8	0.3	60.0	14.8	14.3	1.8	0.3
75-79	540	0.9	0.0	2.4	0.2	0.2	0.7	0.2	63.7	18.0	11.7	0.7	0.0
80-84	712	1.0	0.0	1.5	0.0	0.1	0.3	0.4	61.5	20.4	13.6	0.6	0.1
85-89	742	0.8	0.0	0.8	0.0	0.4	0.0	0.1	60.0	22.5	13.7	1.1	0.4
90+	742	0.3	0.0	0.4	0.0	0.5	0.5	0.4	61.2	28.0	7.1	0.4	0.5

TB: tuberculosis

*1 有症状: 咳・痰・血痰・喀血等の「呼吸器症状」や、喘鳴、胸痛、背部痛、息切れ、発熱、寝汗、全身倦怠、体重減少等の「その他の症状」を有する場合。

TB symptoms: Respiratory symptoms such as cough, sputum expectoration, bloody sputum, and hemoptysis; and other symptoms such as wheezing, chest pain, back pain, dyspnea, fever, night sweating, fatigue tendency, and weight loss.

旧表改訂 新登録結核患者数、職業・性・年齢階層別、2020年

Previous table Number of newly notified TB patients by occupation, sex and age group, 2020

性/年齢	総数	接客業	看護師 /保健 師	医師	他医療 従事者	教員/ 保育士	生徒/ 学生	他常用 勤労者	他臨時 /日雇	他自営/ 自由業	家事従 事者	保育園児/ 幼稚園児/ 他の乳幼児	無職/ 他	不明
Sex/Age group	Total	Service workers	Nurses/P ublic health nurses	Medical doctors	Other medical workers	Teachers/ Nursery nurses	Pupils/St udents	Other regular workers	Other temporar y/daily workers	Other self- employed	Housekee pers	Infants/ Little children	Jobless/ Others	Unknown
男 Male	7,507	148	7	28	60	18	177	1,378	222	403	7	11	4,856	192
0-14	27	0	0	0	0	0	13	0	0	0	0	11	3	0
15-19	36	0	0	0	0	0	28	4	2	0	0	0	0	2
20-24	251	4	1	0	4	0	93	114	6	1	1	0	24	3
25-29	294	8	0	1	10	3	30	168	21	3	1	0	41	8
30-39	340	28	3	6	10	2	9	189	27	12	0	0	46	8
40-49	439	38	2	7	13	2	1	236	19	37	0	0	69	15
50-59	605	23	1	2	10	5	0	297	35	79	0	0	132	21
60-69	900	22	0	5	10	5	1	244	51	83	0	0	438	41
70-79	1,666	18	0	4	2	1	2	111	53	115	3	0	1,306	51
80+	2,949	7	0	3	1	0	0	15	8	73	2	0	2,797	43
女 Female	5,232	146	116	5	163	25	164	509	146	81	114	14	3,639	110
0-14	25	0	0	0	0	0	11	0	0	0	0	14	0	0
15-19	39	0	0	0	1	0	27	7	1	0	0	0	2	1
20-24	254	20	6	0	11	0	79	83	18	1	1	0	33	2
25-29	228	21	8	0	13	7	36	83	8	2	5	0	34	11
30-39	346	24	33	1	41	4	10	120	29	3	14	0	58	9
40-49	302	25	27	1	29	4	0	84	38	8	17	0	56	13
50-59	319	27	27	2	36	5	1	79	18	14	10	0	94	6
60-69	362	14	12	0	24	5	0	37	20	14	18	0	198	20
70-79	881	10	2	1	8	0	0	13	13	32	29	0	751	22
80+	2,476	5	1	0	0	0	0	3	1	7	20	0	2,413	26

旧表 職業別、20～59歳新登録肺結核患者の発見方法別割合、2020年
 Previous table Proportion of mode of detection among newly notified pulmonary TB patients aged 20-59 years by occupation, 2020

	肺結核 Pulmonary TB patients <i>n</i>	個別健 診 Individual medical checkup %	定期健診 Mass screening			接触者健診 Contact examination		医療機関 Clinics/Hospitals			その他/ 不明 Others/Un known %
			住民 Residents %	職場 Employe es %	学校/施 設 Schools/F acilities %	家族 Family %	その他 Others %	有症状 受診(*2) Outpatient s with TB symptoms %	入院中 with other diseases %	通院中 with other diseases %	
総数 Total	2,580	3.2	1.0	24.7	2.9	2.6	4.2	50.7	3.3	5.7	1.9
接客業 Service workers	166	0.6	0.6	15.7	0.0	4.2	4.2	63.9	4.2	4.8	1.8
医療関係者 Medical workers(*1)	238	3.4	0.4	37.0	0.8	1.3	9.2	38.7	2.1	5.0	2.1
教員・保育士 Teachers/ Nursery nurses	20	10.0	0.0	30.0	5.0	5.0	10.0	35.0	0.0	5.0	0.0
学生 Students	195	2.6	0.5	4.1	30.8	0.5	9.7	46.7	1.0	1.0	3.1
他の常用勤労者 Other regular workers	1,126	2.6	0.7	37.0	0.2	2.3	3.1	45.7	2.3	4.7	1.3
他の臨時・日雇 Other temporary/ daily workers	166	3.0	1.2	22.9	1.8	6.0	4.2	47.0	2.4	8.4	3.0
他の自営自由業 Other self-employed	127	8.7	3.9	7.1	0.0	3.9	3.9	57.5	5.5	7.9	1.6
家事 Housekeepers	33	6.1	3.0	3.0	0.0	3.0	0.0	69.7	6.1	9.1	0.0
無職 Jobless/ Others	445	3.8	1.3	7.9	1.3	2.9	2.2	63.4	6.5	8.8	1.8
不明 Unknown	64	3.1	0.0	14.1	0.0	0.0	3.1	62.5	3.1	6.3	7.8

*1 医療関係者：看護師・保健師・助産師，医師，その他医療職含む。

Medical workers include nurses, public health nurses, medical doctors and dentists, physical therapists, occupational therapists, medical technologists, radiographers, and co-medicals.

*2 有症状：咳・痰・血痰・喀血等の「呼吸器症状」や，喘鳴，胸痛，背部痛，息切れ，発熱，寝汗，全身倦怠，体重減少等の「その他の症状」を有する場合。
 TB symptoms: Respiratory symptoms such as cough, sputum expectoration, bloody sputum, and hemoptysis; and other symptoms such as wheezing, chest pain, back pain, dyspnea, fever, night sweating, fatigue tendency, and weight loss.

【診斷時病狀】

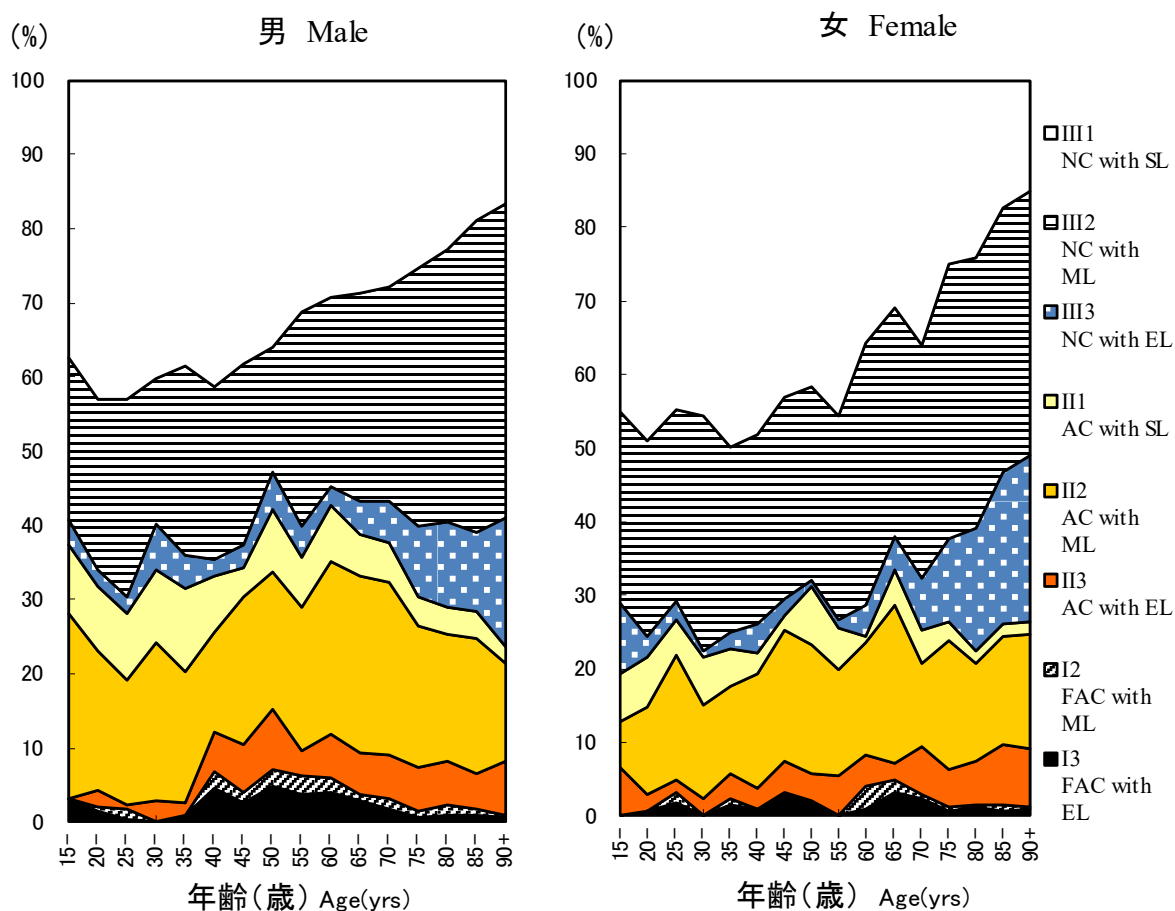


図 3 新登録肺結核患者中胸部X線写真学会分類別所見割合，性・年齢5 歳階級別，2020 年

Fig.3 Proportion of cases classified by X-ray classification by sex and 5-yearage group, 2020

NC : Non-cavitory SL : Slight lesion AC : Advanced cavitory ML : Moderate lesion
 FAC: Far-advance cavitory EL : Extensive lesion

表2 新登録結核患者中「HIV合併あり」と報告された患者数、性・年齢階層別、2020年および2007～2020年
Table 2 Number of newly notified tuberculosis patients with HIV infection, by sex and age group, 2020 and 2007–2020

年齢階層 Age group	喀痰塗抹陽性 Sputum smear positive		他結核菌陽性 Other bacteriologically-positive		菌陰性結核 Bacteriologically-negative		肺外結核 Extra-pulmonary		総数 Total	
	男 M	女 F	男 M	女 F	男 M	女 F	男 M	女 F	男 M	女 F
2020年 2020 Calendar year										
総計 Total	8 (3)	2 (1)	7 (3)	1 (1)	3 (1)	0	10 (5)	0	28 (12)	3 (2)
0-19	0	0	0	0	0	0	0	0	0	0
20-24	2 (2)	0	0	1 (1)	0	0	1 (1)	0	3 (3)	1 (1)
25-29	0	0	2 (1)	0	0	0	3 (2)	0	5 (3)	0
30-34	1 (1)	0	0	0	0	0	1	0	2 (1)	0
35-39	0	0	0	0	1	0	2 (1)	0	3 (1)	0
40-44	0	0	0	0	0	0	1 (1)	0	1 (1)	0
45-49	1	0	1 (1)	0	0	0	0	0	2 (1)	0
50-54	2	0	0	0	1 (1)	0	0	0	3 (1)	0
55-59	1	0	2 (1)	0	0	0	0	0	3 (1)	0
60-64	0	0	0	0	0	0	1	0	1	0
65-69	0	1 (1)	1	0	1	0	0	0	2	1 (1)
70-74	0	0	1	0	0	0	1	0	2	0
75-79	1	0	0	0	0	0	0	0	1	0
80+	0	1	0	0	0	0	0	0	0	1
2007～2020年 2007-2020 Calendar year										
総計 Total	191 (26)	47 (23)	109 (28)	17 ##	51 (11)	11 (8)	225 (49)	32 (18)	576 (114)	107 (60)
0-19	1 (1)	0	0	0	1 (1)	0	2	0	4 (2)	0
20-24	10 (8)	0	4 (3)	1 (1)	1 (1)	1 (1)	3 (2)	1	18 (14)	3 (2)
25-29	10 (5)	7 (6)	4 (2)	1 (1)	1 (1)	2 (2)	17 (6)	1 (1)	32 (14)	11 (10)
30-34	14 (4)	5 (5)	13 (2)	4 (3)	4 (2)	1 (1)	29 (10)	5 (3)	60 (18)	15 (12)
35-39	25 (2)	4 (3)	21 (6)	3 (3)	9 (2)	3 (3)	38 (10)	6 (5)	93 (20)	16 (14)
40-44	32 (2)	7 (5)	16 (5)	0	9 (2)	3 (1)	45 (15)	8 (6)	102 (24)	18 (12)
45-49	19 (2)	3 (3)	14 (6)	1 (1)	6 (1)	0	35 (5)	2	74 (14)	6 (4)
50-54	16 (1)	1	12 (2)	2 (1)	6 (1)	0	16 (1)	0	50 (5)	3 (1)
55-59	11	0	7 (2)	0	4	0	11	3 (3)	33 (2)	3 (3)
60-64	19	1	6	1 (1)	3	0	9	0	37	2 (1)
65-69	10	1 (1)	6	0	5	0	10	1	31	2 (1)
70-74	6 (1)	3	3	2	1	0	5	2	15 (1)	7
75-79	7	1	0	0	1	0	3	2	11	3
80+	11	14	3	2	0	1	2	1	16	18

(): 外国人患者の再掲 Re-count of foreigners

HIV : Human Immunodeficiency Virus. M : male patients, F : female patients.

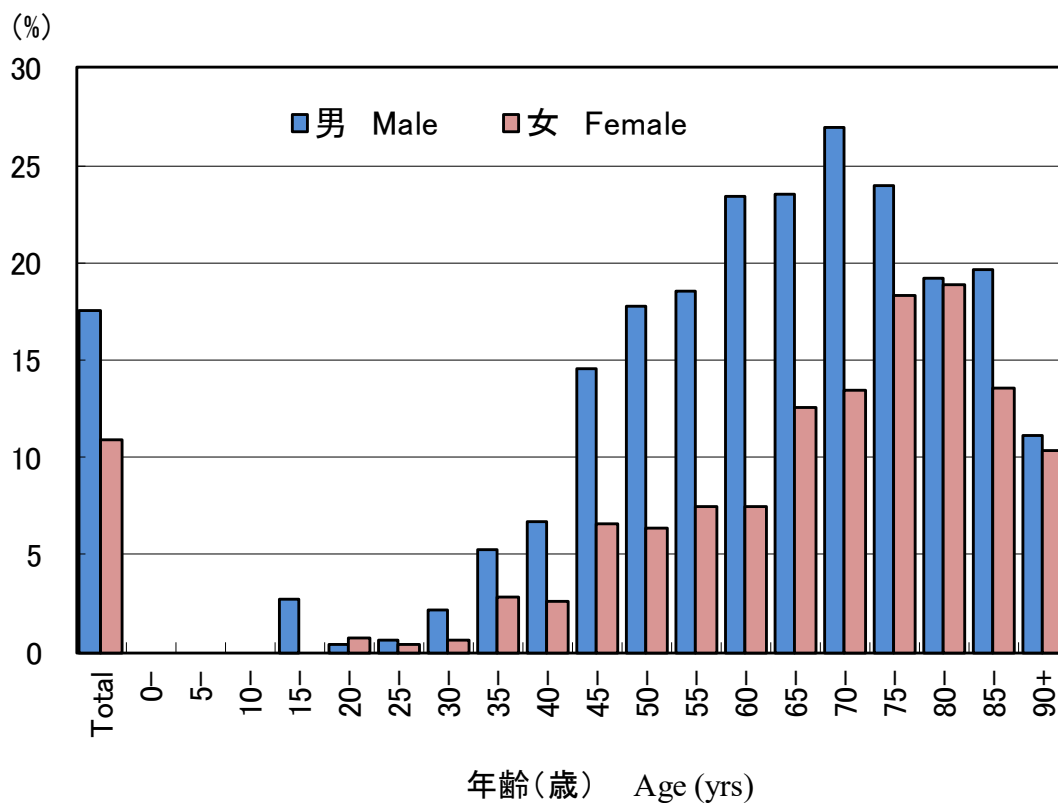


図 4 新登録結核患者中「糖尿病合併あり」と報告された患者の割合、性・年齢階層別、2020年
 Fig.4 Proportion of newly notified tuberculosis patients with diabetes mellitus in each age-group by sex, 2020

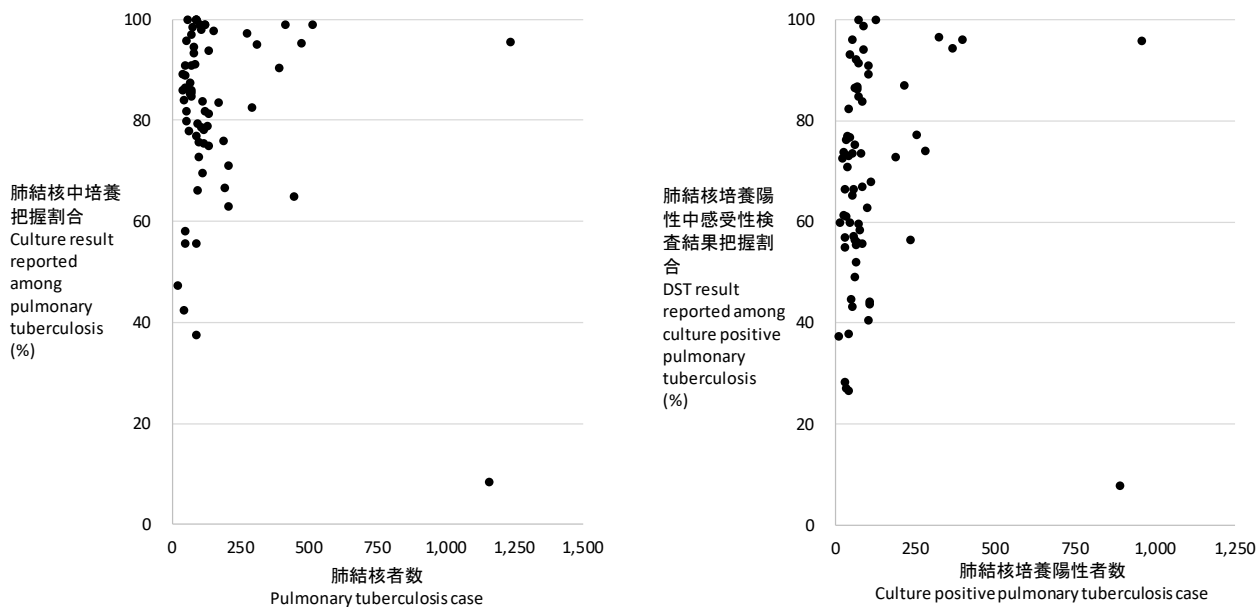
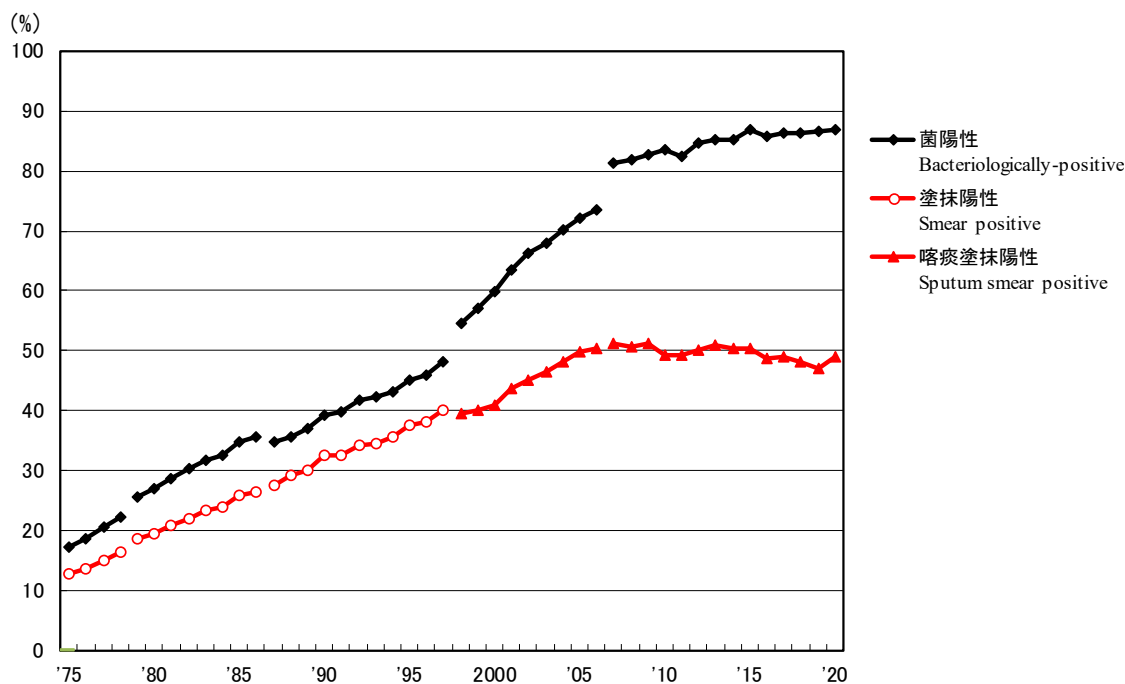


図 5 新登録肺結核患者数とその内培養把握割合の散布図(左)、及び新登録肺結核培養陽性者数とその内感受性検査結果把握割合の散布図(右)、都道府県政令指定都市別、2020年
 Fig. 5 Scatter plot of culture results reported among pulmonary tuberculosis patients and anti-tuberculosis drug susceptibility test results among newly notified pulmonary tuberculosis patients, by prefecture and major city, 2020



旧 図 新登録肺結核患者中菌陽性割合の推移、1975～2020年

Previous Fig

Proportion of bacteriologically confirmed cases among newly notified pulmonary tuberculosis patients, 1975-2020

資料と対象 Sources of information and subjects:

結核登録者の定期報告 Annual tuberculosis reports from public health centers

1975-1978: 全結核 All forms of tuberculosis

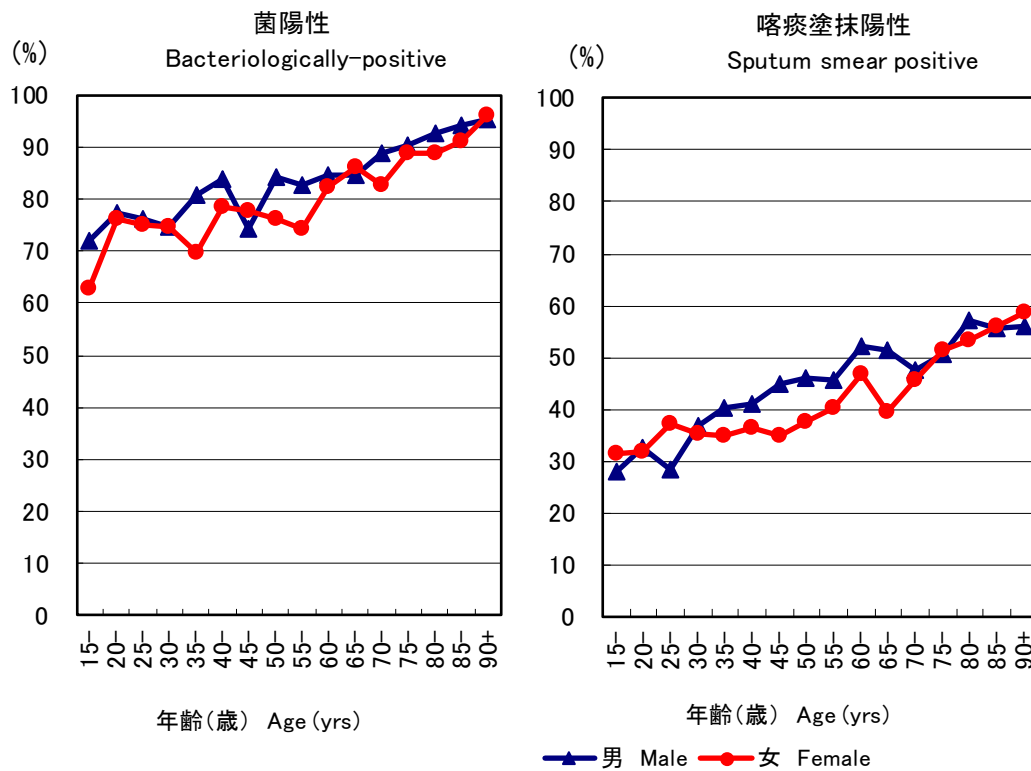
1979-1986: 肺結核 Pulmonary tuberculosis

電算化結核サーベイランスシステム Nationwide computerized tuberculosis surveillance system

1987-1997: 肺結核 Pulmonary Tuberculosis

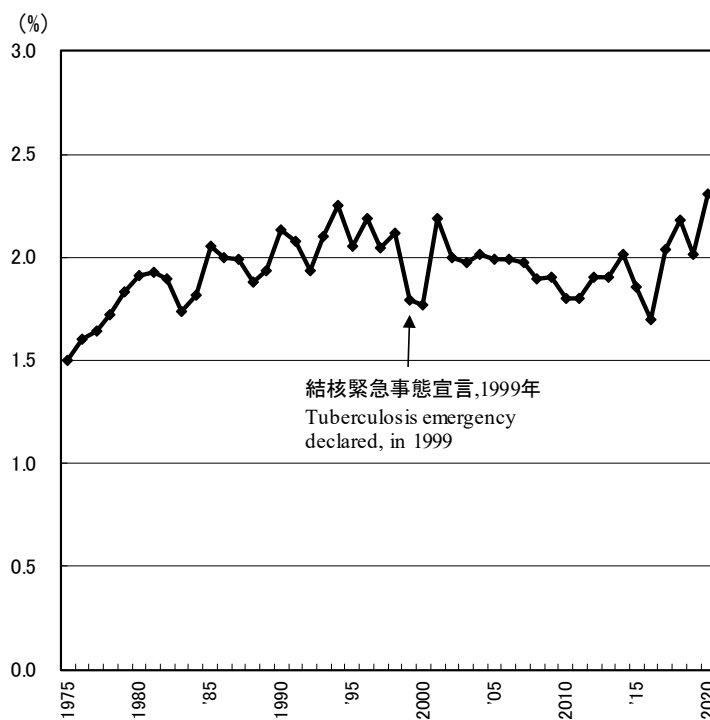
1998-2006: 肺結核(活動性分類の変更) Pulmonary tuberculosis (New patient criteria for notification were applied)

2007-2009: 肺結核(核酸増幅法項目の追加) Pulmonary tuberculosis (Item of nucleic acid amplication was added)



旧 図 新 登 録 肺 結 核 患 者 中 菌 陽 性 割 合、性・年 齢 5 歳 階 級 別、2020 年
Previous Fig.

Proportion of bacteriologically confirmed cases among newly notified pulmonary tuberculosis patients by sex and 5-year age group, 2020



旧 図 新 登 録 肺 結 核 患 者 中 胸 部 X 線 写 真 中 の 広 汎 空 洞 型 割 合 の 推 移、
1975~2020 年

Previous Fig. Proportion of far-advanced cavitory cases among newly notified pulmonary Tuberculosis patients, 1975-2020

旧表 性・職業別、30～59歳新登録肺結核患者中有空洞あるいは／かつ喀痰塗抹陽性の割合、2020年
 Previous table Proportion of cavitory or/and sputum smear positive cases among newly notified pulmonary TB patients aged 30-59 years, 2020

	男 Male							女 Female						
	肺結核 Pulmonary TB	有空洞あるいは 喀痰塗抹陽性 Cavitory or sputum smear(+)			有空洞かつ 喀痰塗抹陽性 Cavitory and sputum smear(+)			肺結核 Pulmonary TB	有空洞あるいは 喀痰塗抹陽性 Cavitory or sputum smear(+)			有空洞かつ 喀痰塗抹陽性 Cavitory and sputum smear(+)		
		n	%	Ratio	n	%	Ratio		n	%	Ratio	n	%	Ratio
接客業 Service workers	68	42	61.8	2.8	24	35.3	3.6	57	21	36.8	1.1	12	21.1	2.2
医療職 Medical workers	41	9	22.0	1.0	4	9.8	1.0	154	53	34.4	1.0	15	9.7	1.0
教員・保育士 Teachers/ Nursery nurses	7	4	57.1	2.6	0	0.0	0.0	7	4	57.1	1.7	2	28.6	2.9
他の常用勤労者 Other regular workers	576	272	47.2	2.2	121	21.0	2.2	195	85	43.6	1.3	34	17.4	1.8
他の臨時・日雇 Other temporary/ daily workers	67	50	74.6	3.4	27	40.3	4.1	57	23	40.4	1.2	9	15.8	1.6
他の自営自由 Other self- employed	105	59	56.2	2.6	30	28.6	2.9	18	10	55.6	1.6	6	33.3	3.4
無職 Jobless	163	108	66.3	3.0	60	36.8	3.8	129	66	51.2	1.5	29	22.5	2.3
その他 Others	78	36	46.2	2.1	12	15.4	1.6	67	33	49.3	1.4	7	10.4	1.1
総数 Total	1,105	580	52.5		278	25.2		684	295	43.1		114	16.7	

その他:家事、学生、不明 Others:Houskeepers/ Students/ Unknown

Ratio: 医療職の割合に対するその他職業の割合の比 The ratio of each proportion to that of medical workers

旧表 新登録肺結核患者の薬剤感受性検査結果、性・年齢別、2019年および2007～2020年

Previous table Drug susceptibility test results among newly notified pulmonary tuberculosis patients, by sex and age group, 2019 and 2007-2020

年齢 Age group	総数 Total										初回治療(再掲) New treatment (Re-count)									
	男 Male					女 Female					男 Male				女 Female					
	感受性結 果把握	多剤耐 性	INH耐 性	RFP耐 性	1剤以 上耐性 *	感受性結 果把握	多剤耐 性	INH耐 性	RFP耐 性	1剤以 上耐性 *	感受性結 果把握	多剤耐 性	INH耐 性	RFP耐 性	1剤以 上耐性 *	感受性結 果把握	多剤耐 性	INH耐 性	RFP耐 性	1剤以 上耐性 *
DST result obtained	MDR	Any INH resista nce	Any RFP resista nce	Any resista nce	DST result obtained	MDR	Any INH resista nce	Any RFP resista nce	Any resista nce	DST result obtained	MDR	Any INH resista nce	Any RFP resista nce	Any resista nce	DST result obtained	MDR	Any INH resista nce	Any RFP resista nce	Any resista nce	
2020年	2020 Calendar year																			
総数 Total	3,267	26	195	37	395	1,942	20	102	23	184	3,081	17	170	27	365	1,857	14	90	17	167
0-19	17	1	2	1	6	19	0	2	0	3	16	1	2	1	6	19	0	2	0	3
20-29	218	5	27	9	52	179	11	26	12	41	211	3	24	7	48	169	9	23	10	38
30-39	148	6	17	6	34	116	2	5	3	12	144	3	14	3	31	109	2	5	3	12
40-49	191	2	14	2	24	110	2	12	3	19	184	2	13	2	22	105	1	11	2	18
50-59	280	1	18	3	36	102	1	7	1	11	266	1	15	3	33	94	0	4	0	8
60-69	420	3	27	6	58	136	0	9	0	13	403	3	23	5	53	131	0	9	0	12
70-79	752	1	38	2	83	312	2	18	2	30	713	0	34	1	78	300	1	14	1	26
80+	1,241	7	52	8	102	968	2	23	2	55	1,144	4	45	5	94	930	1	22	1	50
2007～2020年	2007-2020 Calendar year																			
総数 Total	63,785	463	3,275	690	7,448	34,449	276	1,579	363	3,414	58,388	307	2,728	473	6,549	32,494	181	1,320	251	3,032
0-19	490	12	48	14	101	399	3	36	4	76	470	9	45	11	98	380	3	34	4	71
20-29	3,472	77	300	101	623	2,891	81	248	102	502	3,324	59	269	78	581	2,767	59	218	76	460
30-39	3,636	38	247	56	579	2,798	46	200	60	406	3,450	28	230	46	546	2,689	36	180	46	373
40-49	4,901	41	269	65	656	2,421	24	128	35	299	4,608	31	243	47	594	2,300	15	113	25	273
50-59	6,830	60	388	101	976	2,009	25	103	35	230	6,358	35	336	66	881	1,892	10	77	19	198
60-69	10,626	68	559	123	1,381	2,955	20	153	26	347	9,775	48	466	85	1,208	2,783	14	124	18	302
70-79	13,851	86	714	123	1,636	6,007	32	265	41	597	12,531	45	555	70	1,394	5,592	15	218	21	527
80+	19,979	81	750	107	1,496	14,969	45	446	60	957	17,872	52	584	70	1,247	14,091	29	356	42	828
2007～2020年	2007-2020 Calendar year																			
総数 Total	100%	0.7	5.1	1.1	11.7	100%	0.8	4.6	1.1	9.9	100%	0.5	4.7	0.8	11.2	100%	0.6	4.1	0.8	9.3
0-19	100	2.4	9.8	2.9	20.6	100	0.8	9.0	1.0	19.0	100	1.9	9.6	2.3	20.9	100	0.8	8.9	1.1	18.7
20-29	100	2.2	8.6	2.9	17.9	100	2.8	8.6	3.5	17.4	100	1.8	8.1	2.3	17.5	100	2.1	7.9	2.7	16.6
30-39	100	1.0	6.8	1.5	15.9	100	1.6	7.1	2.1	14.5	100	0.8	6.7	1.3	15.8	100	1.3	6.7	1.7	13.9
40-49	100	0.8	5.5	1.3	13.4	100	1.0	5.3	1.4	12.4	100	0.7	5.3	1.0	12.9	100	0.7	4.9	1.1	11.9
50-59	100	0.9	5.7	1.5	14.3	100	1.2	5.1	1.7	11.4	100	0.6	5.3	1.0	13.9	100	0.5	4.1	1.0	10.5
60-69	100	0.6	5.3	1.2	13.0	100	0.7	5.2	0.9	11.7	100	0.5	4.8	0.9	12.4	100	0.5	4.5	0.6	10.9
70-79	100	0.6	5.2	0.9	11.8	100	0.5	4.4	0.7	9.9	100	0.4	4.4	0.6	11.1	100	0.3	3.9	0.4	9.4
80+	100	0.4	3.8	0.5	7.5	100	0.3	3.0	0.4	6.4	100	0.3	3.3	0.4	7.0	100	0.2	2.5	0.3	5.9

DST: Drug susceptibility test. MDR: Multi-drug resistance, i.e., resistant to at least INH and RFP. INH: Isoniazid. RFP: Rifampicin.

*: 2012年以降はINH, RFP, SM EBの4剤のうちのいずれかに耐性

旧表 新登録肺結核患者の薬剤感受性検査結果および耐性率、性・年齢別、2007～2020年（再掲：外国人）

Previous table Drug susceptibility test results among newly notified pulmonary tuberculosis patients, by sex and age group, 2007-2020 (Re-count of foreigners)

年齢 Age group	総数 Total										初回治療(再掲) New treatment (Re-count)									
	男 Male					女 Female					男 Male					女 Female				
	感受性結果 把握 DST result obtained	多剤耐性 MDR	INH耐性 Any INH resistance	RFP耐性 Any RFP resistance	1剤以上耐性* Any resistance	感受性結果 把握 DST result obtained	多剤耐性 MDR	INH耐性 Any INH resistance	RFP耐性 Any RFP resistance	1剤以上耐性* Any resistance	感受性結果 把握 DST result obtained	多剤耐性 MDR	INH耐性 Any INH resistance	RFP耐性 Any RFP resistance	1剤以上耐性* Any resistance	感受性結果 把握 DST result obtained	多剤耐性 MDR	INH耐性 Any INH resistance	RFP耐性 Any RFP resistance	1剤以上耐性* Any resistance
2007～2020年	2007-2020 Calendar year																			
総数 Total	2,764	107	334	132	538	2,745	120	340	145	537	2,632	75	290	98	487	2,615	92	300	112	483
0-19	159	11	33	13	50	104	2	14	3	18	153	8	30	10	47	101	2	13	3	17
20-29	1,493	68	192	85	303	1,281	71	171	87	284	1,434	51	167	65	275	1,232	54	149	67	256
30-39	475	19	53	24	88	667	26	92	29	130	452	14	48	19	81	638	20	84	22	120
40-49	214	5	18	6	34	342	8	30	10	52	200	1	13	1	27	320	5	27	6	46
50-59	141	1	7	1	13	161	6	19	8	29	135	0	6	0	12	147	5	14	7	22
60-69	124	3	19	3	32	80	3	9	4	12	114	3	17	3	30	77	3	9	4	12
70-79	79	0	7	0	9	45	4	5	4	7	71	0	5	0	7	39	3	4	3	5
80+	79	0	5	0	9	65	0	0	0	5	73	0	4	0	8	61	0	0	0	5
2007～2020年	2007-2020 Calendar year																			
総数 Total	100%	3.9	12.1	4.8	19.5	100%	4.4	12.4	5.3	19.6	100%	2.8	11.0	3.7	18.5	100%	3.5	11.5	4.3	18.5
0-19	100	6.9	20.8	8.2	31.4	100	1.9	13.5	2.9	17.3	100	5.2	19.6	6.5	30.7	100	2.0	12.9	3.0	16.8
20-29	100	4.6	12.9	5.7	20.3	100	5.5	13.3	6.8	22.2	100	3.6	11.6	4.5	19.2	100	4.4	12.1	5.4	20.8
30-39	100	4.0	11.2	5.1	18.5	100	3.9	13.8	4.3	19.5	100	3.1	10.6	4.2	17.9	100	3.1	13.2	3.4	18.8
40-49	100	2.3	8.4	2.8	15.9	100	2.3	8.8	2.9	15.2	100	0.5	6.5	0.5	13.5	100	1.6	8.4	1.9	14.4
50-59	100	0.7	5.0	0.7	9.2	100	3.7	11.8	5.0	18.0	100	0.0	4.4	0.0	8.9	100	3.4	9.5	4.8	15.0
60-69	100	2.4	15.3	2.4	25.8	100	3.8	11.3	5.0	15.0	100	2.6	14.9	2.6	26.3	100	3.9	11.7	5.2	15.6
70-79	100	0.0	8.9	0.0	11.4	100	8.9	11.1	8.9	15.6	100	0.0	7.0	0.0	9.9	100	7.7	10.3	7.7	12.8
80+	100	0.0	6.3	0.0	11.4	100	0.0	0.0	0.0	7.7	100	0.0	5.5	0.0	11.0	100	0.0	0.0	0.0	8.2

DST: Drug susceptibility test. MDR: Multi-drug resistance, i.e., resistant to at least INH and RFP. INH: Isoniazid. RFP: Rifampicin.

*: 2012年はINH, RFP, SM EBの4剤のうちのいずれかに耐性