

【治療 1】

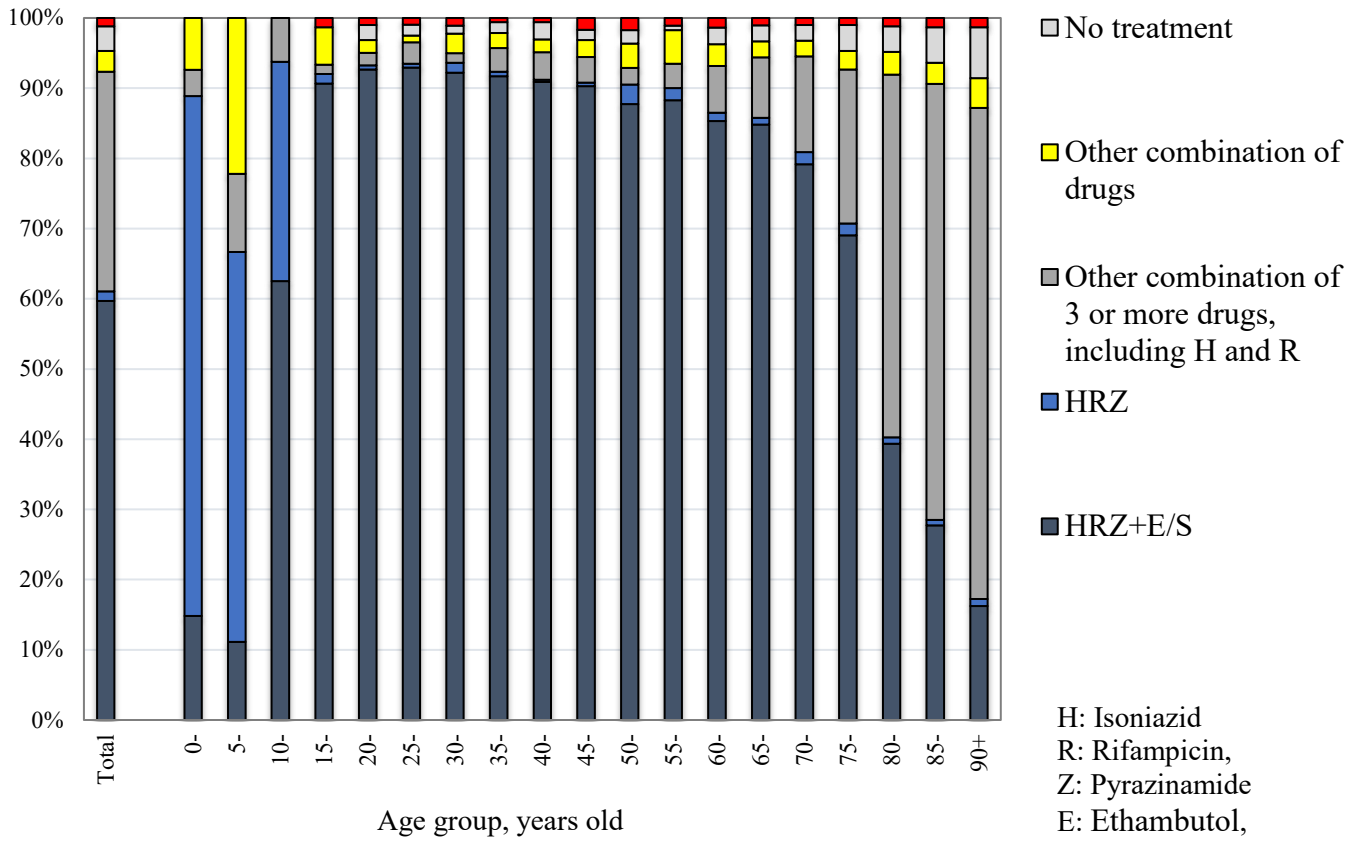
Table 1 再治療患者の年齢階層別・前回治療開始年別患者数、2020

Number of patients with TB on re-treatment, by year when previous TB treatment was initiated and age group, 2020

Year when previous TB treatment initiated	Total	Age group (years)								Previous TB treatment regimen unknown (re-count)
		0-19	20-29	30-39	40-49	50-59	60-69	70-79	80+	
Total	546	9	43	25	28	46	68	122	205	154
~1949	17	0	0	0	0	0	0	0	17	14
1950-59	65	0	0	0	0	0	2	10	53	38
1960-69	31	0	0	0	0	0	1	11	19	25
1970-79	16	0	0	0	0	0	3	7	6	14
1980-89	12	0	0	0	0	1	2	4	5	9
1990-99	25	0	0	0	3	6	4	7	5	14
2000-09	42	2	0	4	4	8	5	7	12	10
2010-20	338	7	43	21	21	31	51	76	88	30
2010-2020 (re-count)										
2010	7	0	0	0	1	1	2	0	3	2
2011	14	0	0	1	2	3	1	4	3	1
2012	17	0	2	1	1	2	3	5	3	2
2013	9	0	2	0	0	0	2	2	3	2
2014	13	0	2	1	2	0	2	5	1	2
2015	21	0	3	1	1	1	5	5	5	2
2016	32	0	4	1	3	4	7	6	7	7
2017	42	1	7	4	1	4	2	10	13	2
2018	75	0	11	3	6	8	9	16	22	3
2019	75	1	10	5	2	6	13	20	18	6
2020	33	5	2	4	2	2	5	3	10	1

TB: tuberculosis

Fig.1 新登録結核患者の年齢階層別治療開始時化学療法内容、2020  
 Anti-tuberculosis drugs upon notification by age group in 2020



旧表 再治療者の年齢階層別前回治療内容別患者数、2020年

Previous table Number of retreatment tuberculosis patients by previous tuberculosis treatment regimen and age group, 2020

年齢 Age group	再治療者 Retreatment	前回治療内容 Previous treatment regimen				
		HRZ含む治療 Regimen with HRZ	他HR含む治療 Other regimen with HR	その他治療 Other regimen	潜在性結核治療 LTBI treatment	不明 Unknown
総数 Total	546	179	79	51	83	154
0-4	1	0	0	0	1	0
5-9	3	0	0	0	3	0
10-14	3	0	0	0	3	0
15-19	2	1	0	0	1	0
20-24	22	9	1	0	8	4
25-29	21	10	2	1	6	2
30-34	16	4	2	1	7	2
35-39	9	5	0	0	2	2
40-44	13	6	2	0	5	0
45-49	15	5	2	2	3	3
50-54	21	9	2	1	3	6
55-59	25	12	3	0	8	2
60-64	24	12	2	4	2	4
65-69	44	21	5	1	8	9
70-74	50	16	6	3	5	20
75-79	72	30	12	7	6	17
80-84	80	24	12	12	7	25
85-89	70	11	17	13	3	26
90+	55	4	11	6	2	32

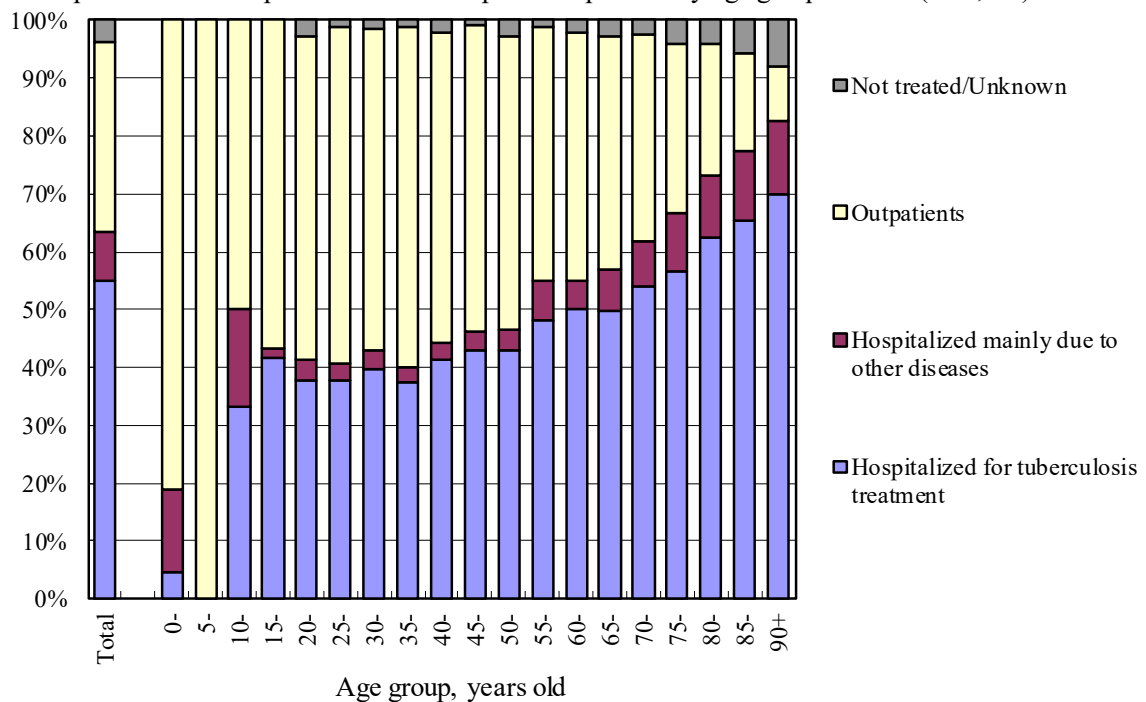
H : Isoniazid, R : Rifampicin, Z : Pyrazinamide

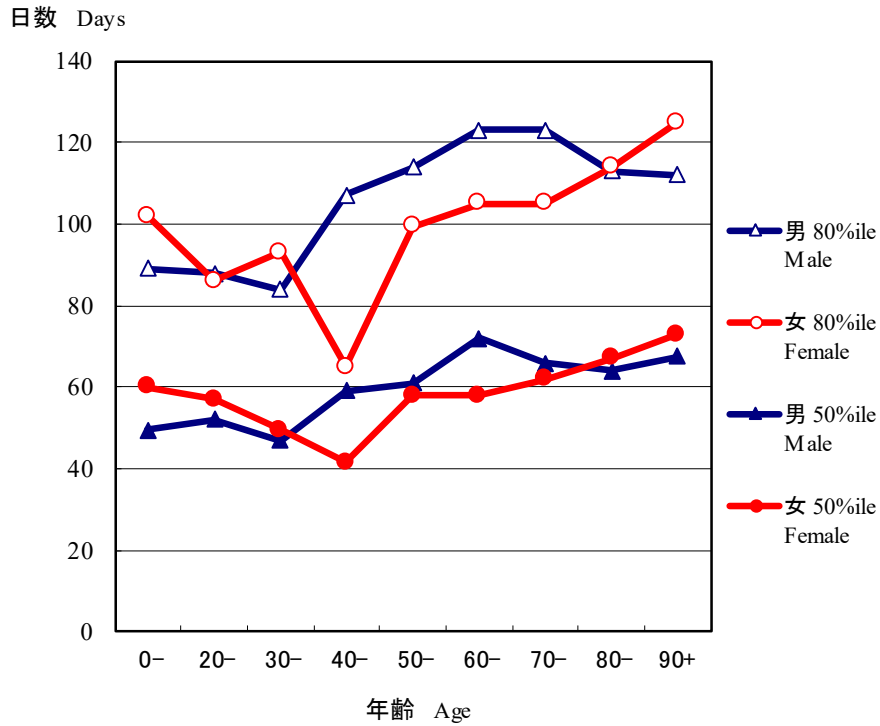
LTBI : Latent Tuberculosis Infection

【治療 2】

Fig.2 新登録肺結核患者の治療開始時受療状況別割合、年齢階層別、2020

Proportion of the outpatients and the hospitalized patients by age group in 2020 (N=9,446)





旧図 治療開始時結核を主たる理由に入院かつ退院時期情報があつた者について、性・年齢階層別入院期間（中央値および80パーセントイル値）、2019年新登録肺結核喀痰塗抹陽性初回治療者

Previous Fig. Median (50 percentile) and 80 percentile of duration of hospitalization among those hospitalized with tuberculosis and with known discharged day, new sputum-smear positive pulmonary tuberculosis patients in 2019 by sex and age group

旧表 年齢階層別治療開始時入院あるいは他疾患入院の割合(%)、総合患者分類別、2020年新登録結核患者  
 Previous table Proportion (%) hospitalized among newly notified tuberculosis patients in 2020 by age group and patient classification

肺結核 Pulmonary TB											
年齢 Age	計 Total		喀痰塗抹陽性 Sputum smear positive		その他の結核菌陽性 Other bacillary positive		菌陰性・その他 Bacillary negative /unknown		肺外結核 Extra-pulmonary		
	入院 Ht	他入院 Ho	入院 Ht	他入院 Ho	入院 Ht	他入院 Ho	入院 Ht	他入院 Ho	入院 Ht	他入院 Ho	
総数 Total	55.1	8.4	89.9	2.5	25.7	14.6	10.4	12.1	29.5	20.1	
0-19	31.4	5.7	100.0	0.0	21.9	6.3	6.0	8.0	4.5	9.1	
20-29	37.8	3.2	88.2	2.4	16.6	4.0	8.6	2.7	17.4	5.5	
30-39	38.8	2.8	89.2	1.0	11.9	5.4	6.0	1.5	15.9	6.4	
40-49	42.3	3.0	91.2	0.4	13.2	4.2	2.5	5.7	13.8	12.7	
50-59	45.6	5.3	88.3	1.3	15.0	8.5	6.8	8.3	18.3	14.7	
60-69	49.9	6.2	88.1	1.8	14.9	10.1	6.6	11.3	18.6	15.7	
70-79	55.5	9.0	90.1	2.9	25.9	14.2	8.5	17.5	26.0	22.0	
80-89	64.1	11.4	90.6	3.4	33.0	21.0	19.8	23.7	37.8	25.8	
90+	69.9	12.7	90.6	2.4	42.3	25.7	40.0	34.5	46.0	24.8	

入院: 結核を主たる理由に入院 Ht: Hospitalized for tuberculosis treatment

他入院: 結核以外の他疾患の治療を主たる理由に入院 Ho: Hospitalized mainly due to other diseases

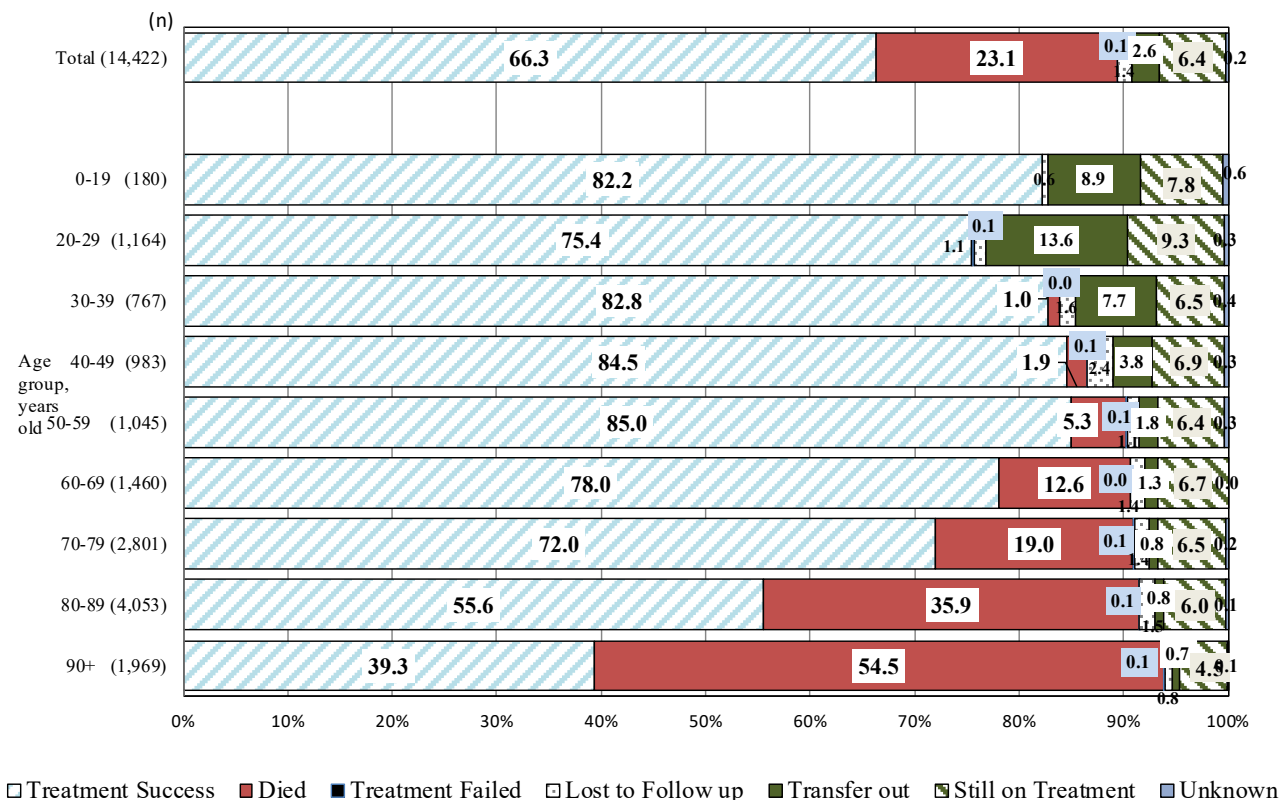
【治療成績】

Table 2 2018,2019年における新登録結核患者と潜在性結核感染症登録患者の次年末時登録除外状況および除外理由、総合患者分類別  
 Patients deleted from tuberculosis registration by the end of years (in 2019 and in 2020)  
 - Patients with tuberculosis patients and LTBI notified in the previous years (in 2018 and in 2019, respectively) -

	Newly notified patients with tuberculosis													Patients with LTBI (Not included in the total) (%)
	Total (%)	Patients with pulmonary tuberculosis						Patients with extra-pulmonary tuberculosis (%)		Patients with LTBI (Not included in the total) (%)				
		Sub-total (pulmonary tuberculosis) (%)	Sputum-smear positive		Other bacteriologically positive (%)	Bacteriologically negative and others (%)	Patients with extra-pulmonary tuberculosis (%)							
		New (%)	Re-treatment (%)											
<b>Newly notified tuberculosis cases in 2018*</b>	<b>15,527 (100)</b>	<b>11,996 (100)</b>	<b>5,505 (100)</b>	<b>305 (100)</b>	<b>4,601 (100)</b>	<b>1,585 (100)</b>	<b>3,531 (100)</b>	<b>7,406 (100)</b>						
Total number of patients deleted from tuberculosis registration by the end of 2019	5,222 (33.6)	4,111 (34.3)	2,181 (39.6)	111 (36.4)	1,445 (31.4)	374 (23.6)	1,111 (31.5)	4,186 (56.5)						
No need for post-treatment follow-up	59 (0.4)	39 (0.3)	12 (0.2)	3 (1.0)	14 (0.3)	10 (0.6)	20 (0.6)	3,465 (46.8)						
Died	4,011 (25.8)	3,120 (26.0)	1,776 (32.3)	84 (27.5)	1,095 (23.8)	165 (10.4)	891 (25.2)	221 (3.0)						
Tuberculosis-related death	1,243 (8.0)	1,002 (8.4)	747 (13.6)	35 (11.5)	198 (4.3)	22 (1.4)	241 (6.8)	1 (0.0)						
Other causes of death	2,768 (17.8)	2,118 (17.7)	1,029 (18.7)	49 (16.1)	897 (19.5)	143 (9.0)	650 (18.4)	220 (3.0)						
Transfer out	1,072 (6.9)	887 (7.4)	361 (6.6)	20 (6.6)	315 (6.8)	191 (12.1)	185 (5.2)	388 (5.2)						
Register during follow-up	63 (0.4)	53 (0.4)	28 (0.5)	3 (1.0)	17 (0.4)	5 (0.3)	10 (0.3)	42 (0.6)						
Other reasons	17 (0.1)	12 (0.1)	4 (0.1)	1 (0.3)	4 (0.1)	3 (0.2)	5 (0.1)	70 (0.9)						
<b>Newly notified tuberculosis cases in 2019**</b>	<b>14,422 (100)</b>	<b>11,095 (100)</b>	<b>4,985 (100)</b>	<b>267 (100)</b>	<b>4,376 (100)</b>	<b>1,467 (100)</b>	<b>3,327 (100)</b>	<b>7,676 (100)</b>						
Total number of patients deleted from tuberculosis registration by the end of 2020	4,821 (33.4)	3,731 (33.6)	1,951 (39.1)	83 (31.1)	1,368 (31.3)	329 (22.4)	1,090 (32.8)	4,370 (56.9)						
No need for post-treatment follow-up	51 (0.4)	21 (0.2)	3 (0.1)	3 (1.1)	7 (0.2)	8 (0.5)	30 (0.9)	3,671 (47.8)						
Died	3,767 (26.1)	2,913 (26.3)	1,634 (32.8)	68 (25.5)	1,049 (24.0)	162 (11.0)	854 (25.7)	263 (3.4)						
Tuberculosis-related death	1,193 (8.3)	957 (8.6)	710 (14.2)	24 (9.0)	197 (4.5)	26 (1.8)	236 (7.1)	8 (0.1)						
Other causes of death	2,574 (17.8)	1,956 (17.6)	924 (18.5)	44 (16.5)	852 (19.5)	136 (9.3)	618 (18.6)	255 (3.3)						
Transfer out	911 (6.3)	724 (6.5)	284 (5.7)	10 (3.7)	287 (6.6)	143 (9.7)	187 (5.6)	332 (4.3)						
Register during follow-up	56 (0.4)	44 (0.4)	22 (0.4)	2 (0.7)	15 (0.3)	5 (0.3)	12 (0.4)	34 (0.4)						
Other reasons	36 (0.2)	29 (0.3)	8 (0.2)	0 (0.0)	10 (0.2)	11 (0.7)	7 (0.2)	70 (0.9)						

\* Based on the annual report database in 2019. \*\* Based on the annual report database in 2020.

LTBI : Latent Tuberculosis Infection



2019年新登録患者の2020年末治療成績 (%)  
 Fig. 3 Treatment outcomes of newly notified tuberculosis patients by age group, 2019 year cohort (%)

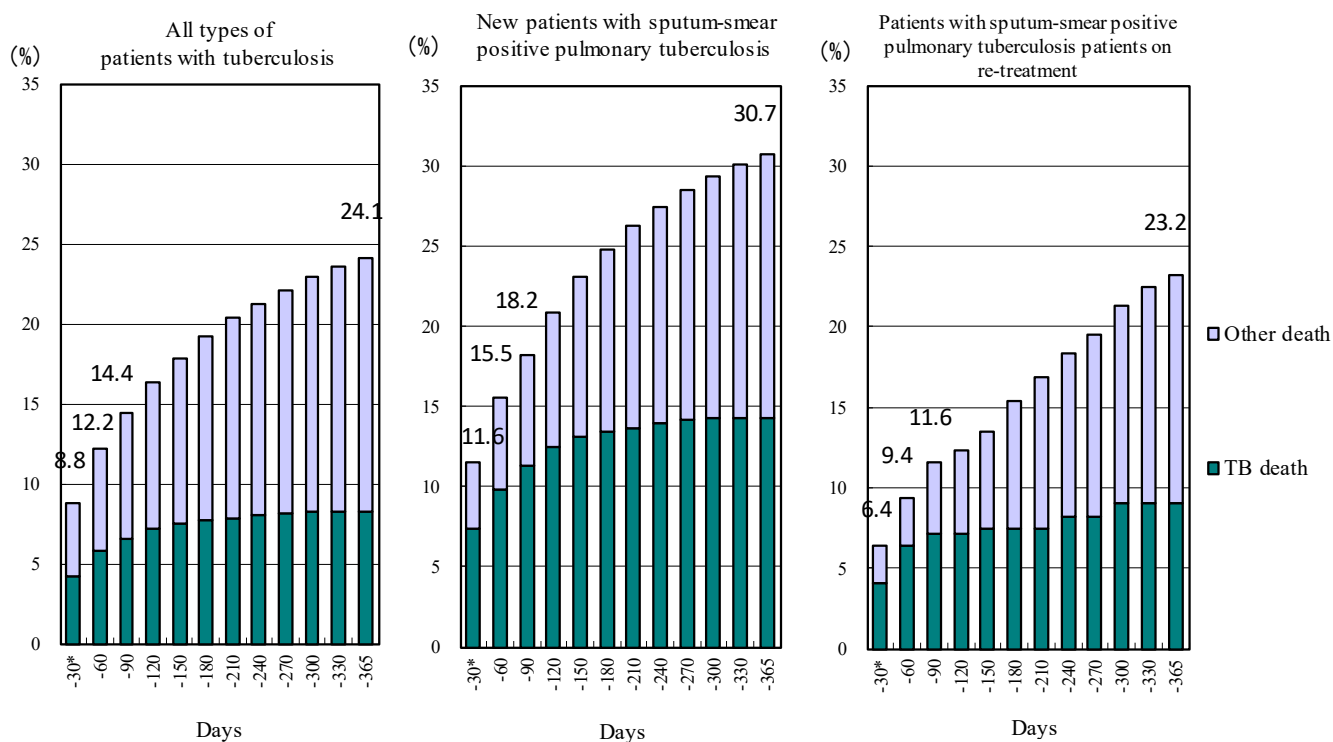


Fig. 4 2019年新登録結核患者中治療開始後1年以内死亡者の時期別・死因別累積死亡割合 (%)  
 Cumulative proportion of deaths by duration of treatment - Newly notified patients with tuberculosis in 2019

\* Includes patients who died before the commencement of treatment.  
 TB: tuberculosis