



Monthly Report of Tuberculosis Surveillance, Japan - January, 2021

The reporting and recording of tuberculosis (TB) and Latent TB Infection (LTBI) are managed at public health centers (PHCs) by the nationwide computerized TB surveillance system in Japan. A monthly report is compiled from the database automatically and regularly on 4th Friday of the next month, and an annual report is also produced much like the monthly report, but with sufficient time for data correction.

Tables and figures shown in the monthly reports are as follows.

Figures

Figure 1. Number of newly notified TB cases by month, Japan, 2018-2021

Figure 2. Newly notified TB cases by sex and age, Japan, summation (Jan. - Jan.) 2021

Figure 3. Notification rate of TB cases by sex and age, Japan, summation (Jan. - Jan.) 2021

Figure 4. Notification rate of TB by prefecture, Japan, summation (Jan. - Jan.) 2021

Figure 5. Notification rate of TB by major city, Japan, summation (Jan. - Jan.) 2021

Figure 6. Number of LTBI, Japan, 2018-2021

Figure 7. Number of LTBI by sex and age group, Japan, summation (Jan. - Jan.) 2021

Tables

Table 1. Newly notified TB cases and rates by sex and age, Japan, 2021

Table 2. Newly notified sputum smear positive pulmonary TB cases and rates by sex and age, Japan, 2021

Table 3. Newly notified TB cases and rates by prefecture, Japan, 2021

Table 4. Newly notified TB cases and rates by major city, Japan, 2021

Table 5. LTBI cases and rates by sex and age, Japan, 2021

Table 6. LTBI cases and rates by prefecture, Japan, 2021

Table 7. LTBI cases and rates by major city, Japan, 2021

Figure 1. Number of newly notified TB cases by month, Japan, 2018-2021

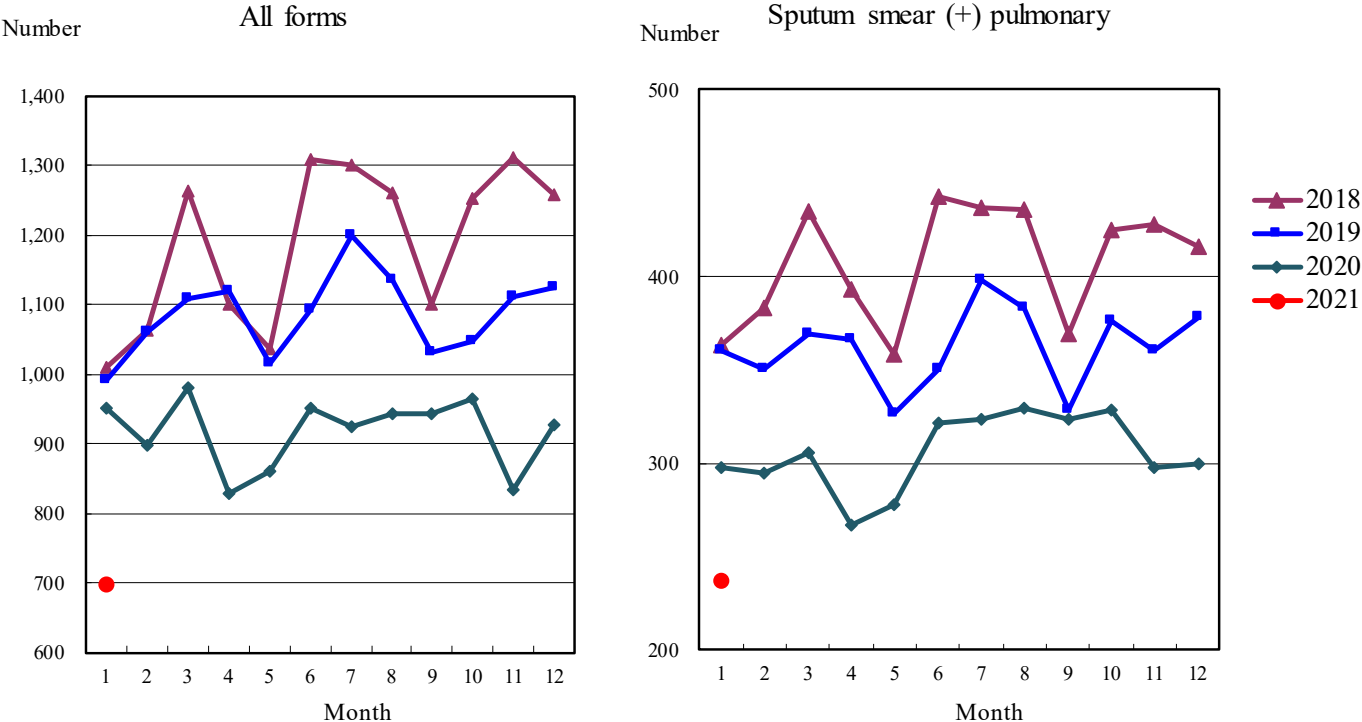


Figure 2. Newly notified TB patients by sex and age, Japan, summation (Jan.-Jan.) 2021

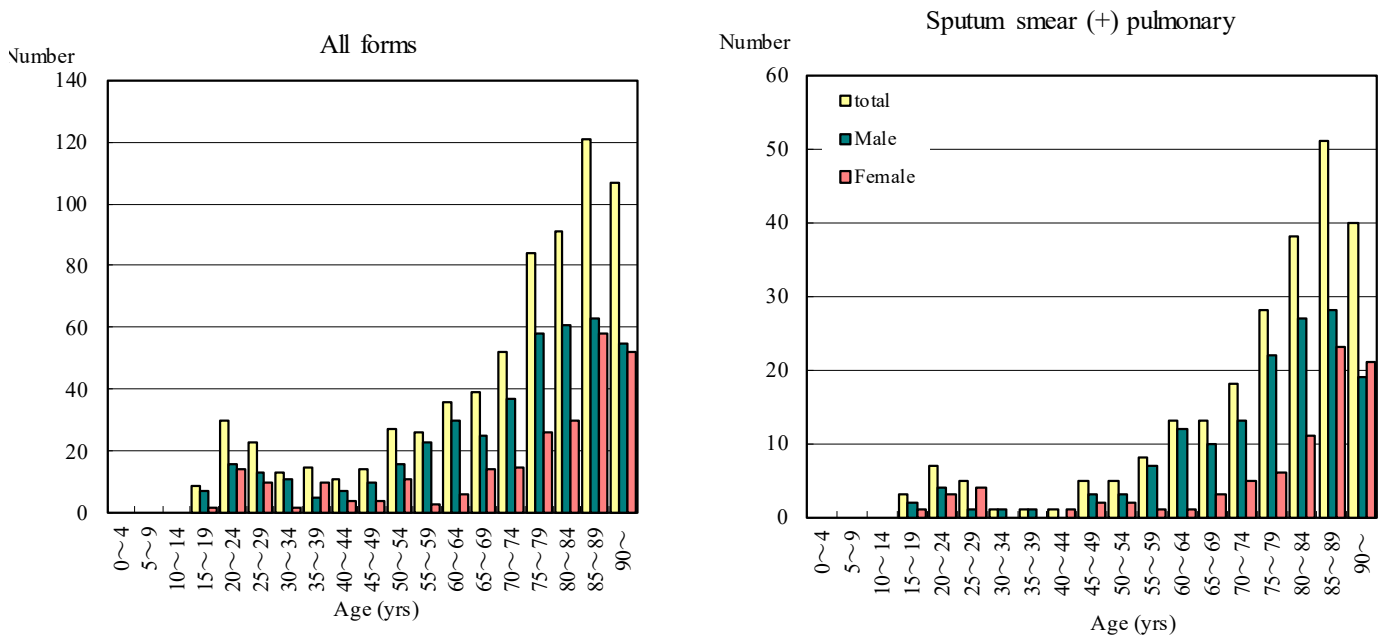


Figure 3. Notification rate of TB cases by sex and age, Japan, summation (Jan.-Jan.) 2021

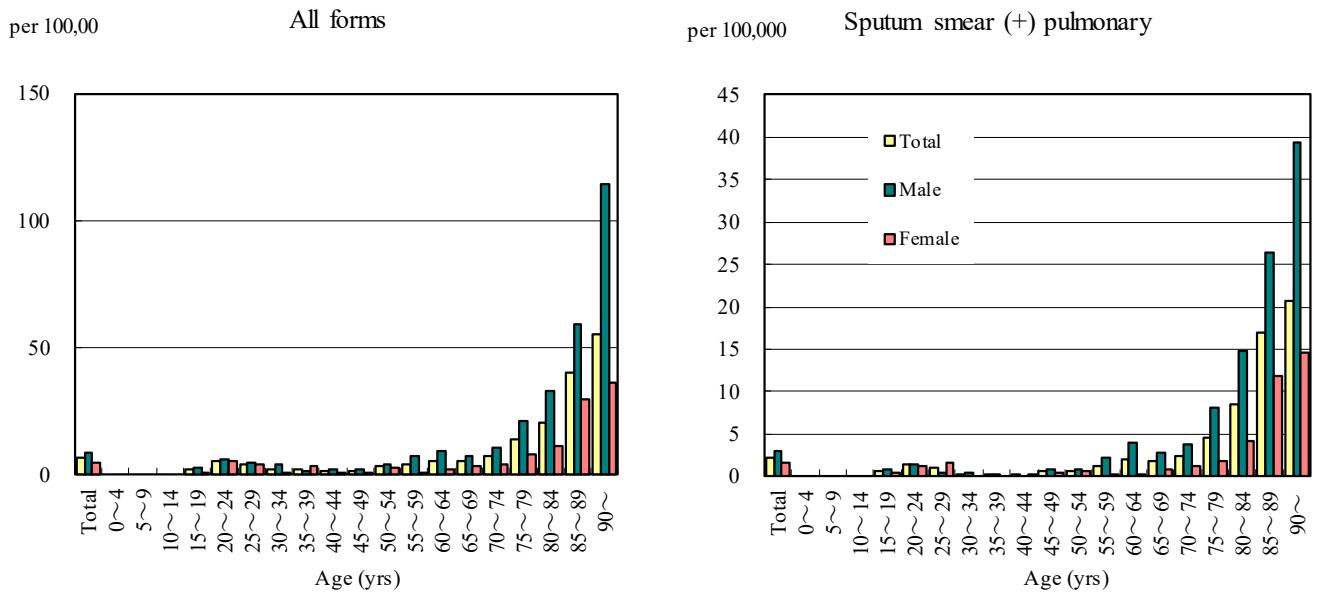


Figure 4. Notification rates of TB by prefecture, Japan, summation (Jan.-Jan.) 2021

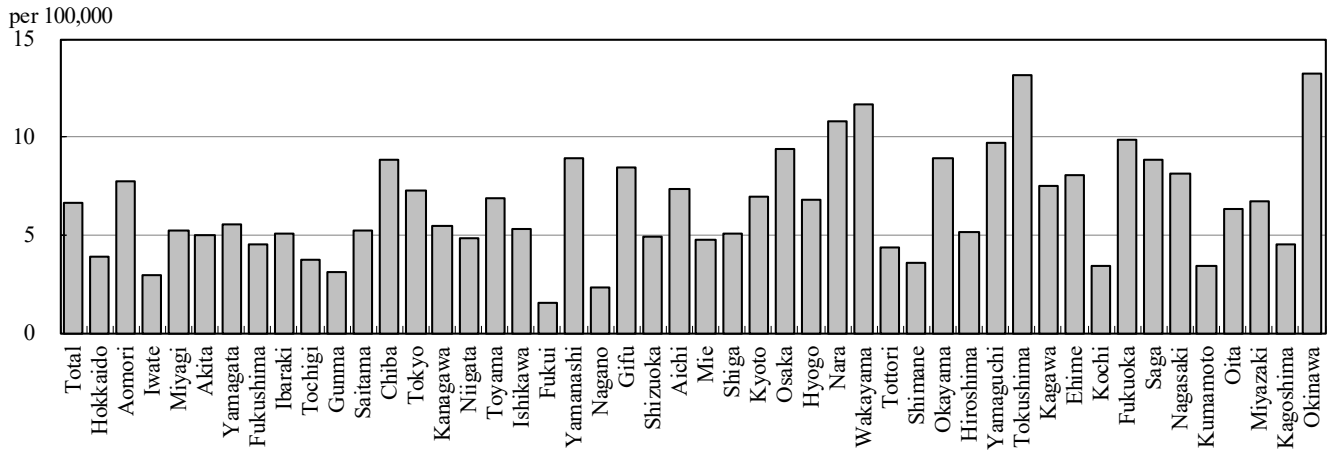


Figure 5. Notification rates of TB major city, Japan, summation (Jan.-Jan.) 2021

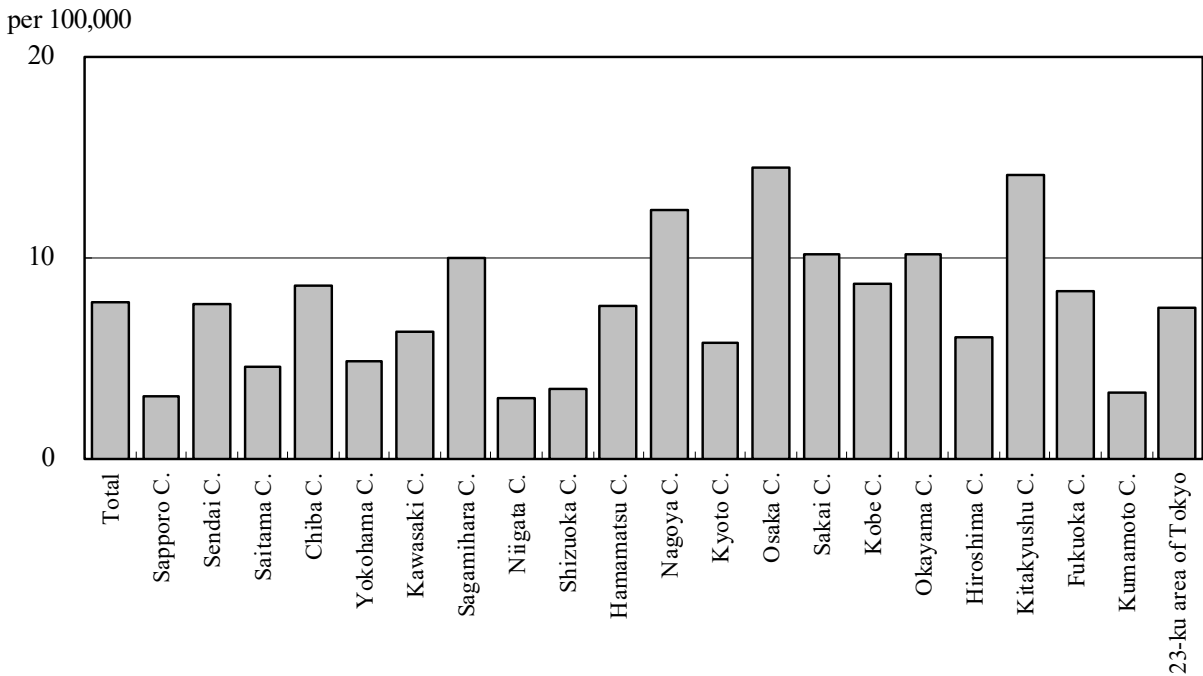


Figure 6. Number of LTBI, Japan, 2018-2021

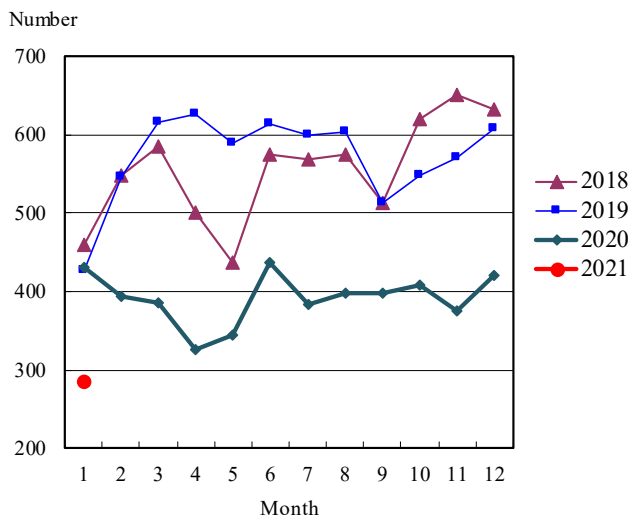


Figure 7. Number of LTBI by sex and age group, Japan, summation (Jan.-Jan.) 2021

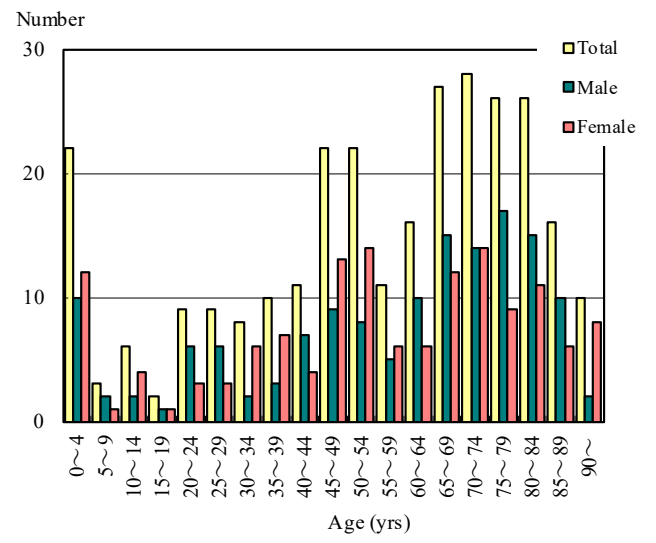


Table 1. Newly notified TB cases and rates by sex and age, Japan, 2021

	Jan.			Summation (Jan.-Jan.)			Notification rate (per 100,000)		
	Total	Male	Female	Total	Male	Female	Total	Male	Female
Total	698	437	261	698	437	261	6.6	8.5	4.8
0~4	0	0	0	0	0	0	0.0	0.0	0.0
5~9	0	0	0	0	0	0	0.0	0.0	0.0
10~14	0	0	0	0	0	0	0.0	0.0	0.0
15~19	9	7	2	9	7	2	1.9	2.8	0.8
20~24	30	16	14	30	16	14	5.6	5.8	5.4
25~29	23	13	10	23	13	10	4.4	4.9	4.0
30~34	13	11	2	13	11	2	2.3	3.8	0.7
35~39	15	5	10	15	5	10	2.4	1.6	3.2
40~44	11	7	4	11	7	4	1.5	1.9	1.1
45~49	14	10	4	14	10	4	1.7	2.4	1.0
50~54	27	16	11	27	16	11	3.8	4.5	3.1
55~59	26	23	3	26	23	3	4.0	7.2	0.9
60~64	36	30	6	36	30	6	5.7	9.7	1.9
65~69	39	25	14	39	25	14	5.4	7.1	3.7
70~74	52	37	15	52	37	15	7.2	10.8	3.9
75~79	84	58	26	84	58	26	13.9	21.5	7.8
80~84	91	61	30	91	61	30	20.5	33.3	11.5
85~89	121	63	58	121	63	58	40.2	59.4	29.8
90~	107	55	52	107	55	52	55.6	114.3	36.0

Temporary registrants = 43, Total of registrants and temporary registrants = 741

Rate: summation / (population*1/12)*100,000

Population: as of 1st Oct. 2019

Table 2. Newly notified sputum smear positive pulmonary TB cases and rates by sex and age, Japan, 2021

	Jan.			Summation (Jan.-Jan.)			Notification rate (per 100,000)		
	Total	Male	Female	Total	Male	Female	Total	Male	Female
Total	237	153	84	237	153	84	2.3	3.0	1.6
0~4	0	0	0	0	0	0	0.0	0.0	0.0
5~9	0	0	0	0	0	0	0.0	0.0	0.0
10~14	0	0	0	0	0	0	0.0	0.0	0.0
15~19	3	2	1	3	2	1	0.6	0.8	0.4
20~24	7	4	3	7	4	3	1.3	1.5	1.2
25~29	5	1	4	5	1	4	1.0	0.4	1.6
30~34	1	1	0	1	1	0	0.2	0.3	0.0
35~39	1	1	0	1	1	0	0.2	0.3	0.0
40~44	1	0	1	1	0	1	0.1	0.0	0.3
45~49	5	3	2	5	3	2	0.6	0.7	0.5
50~54	5	3	2	5	3	2	0.7	0.8	0.6
55~59	8	7	1	8	7	1	1.2	2.2	0.3
60~64	13	12	1	13	12	1	2.1	3.9	0.3
65~69	13	10	3	13	10	3	1.8	2.8	0.8
70~74	18	13	5	18	13	5	2.5	3.8	1.3
75~79	28	22	6	28	22	6	4.6	8.2	1.8
80~84	38	27	11	38	27	11	8.6	14.7	4.2
85~89	51	28	23	51	28	23	16.9	26.4	11.8
90~	40	19	21	40	19	21	20.8	39.5	14.6

Rate: summation / (population*1/12)*100,000

Population: as of 1st Oct. 2019

Table 3. Newly notified TB cases and rates by prefecture, Japan, 2021

	Jan.		Summation (Jan.-Jan.)		Notification rate (per 100,000)	
	Newly notified TB	Sputum smear (+)	Newly notified TB	Sputum smear (+)	Newly notified TB	Sputum smear (+)
Total	698	237	698	237	6.6	2.3
Hokkaido	17	7	17	7	3.9	1.6
Aomori	8	4	8	4	7.7	3.9
Iwate	3	0	3	0	2.9	0.0
Miyagi	10	4	10	4	5.2	2.1
Akita	4	2	4	2	5.0	2.5
Yamagata	5	2	5	2	5.6	2.2
Fukushima	7	3	7	3	4.6	2.0
Ibaraki	12	3	12	3	5.0	1.3
Tochigi	6	3	6	3	3.7	1.9
Gunma	5	1	5	1	3.1	0.6
Saitama	32	9	32	9	5.2	1.5
Chiba	46	9	46	9	8.8	1.7
Tokyo	84	33	84	33	7.2	2.8
Kanagawa	42	17	42	17	5.5	2.2
Niigata	9	3	9	3	4.9	1.6
Toyama	6	2	6	2	6.9	2.3
Ishikawa	5	1	5	1	5.3	1.1
Fukui	1	0	1	0	1.6	0.0
Yamanashi	6	1	6	1	8.9	1.5
Nagano	4	3	4	3	2.3	1.8
Gifu	14	2	14	2	8.5	1.2
Shizuoka	15	6	15	6	4.9	2.0
Aichi	46	15	46	15	7.3	2.4
Mie	7	3	7	3	4.7	2.0
Shiga	6	2	6	2	5.1	1.7
Kyoto	15	6	15	6	7.0	2.8
Osaka	69	24	69	24	9.4	3.3
Hyogo	31	8	31	8	6.8	1.8
Nara	12	5	12	5	10.8	4.5
Wakayama	9	6	9	6	11.7	7.8
Tottori	2	1	2	1	4.3	2.2
Shimane	2	0	2	0	3.6	0.0
Okayama	14	4	14	4	8.9	2.5
Hiroshima	12	7	12	7	5.1	3.0
Yamaguchi	11	1	11	1	9.7	0.9
Tokushima	8	4	8	4	13.2	6.6
Kagawa	6	3	6	3	7.5	3.8
Ehime	9	5	9	5	8.1	4.5
Kochi	2	1	2	1	3.4	1.7
Fukuoka	42	13	42	13	9.9	3.1
Saga	6	1	6	1	8.8	1.5
Nagasaki	9	3	9	3	8.1	2.7
Kumamoto	5	0	5	0	3.4	0.0
Oita	6	2	6	2	6.3	2.1
Miyazaki	6	1	6	1	6.7	1.1
Kagoshima	6	3	6	3	4.5	2.2
Okinawa	16	4	16	4	13.2	3.3

Rate: summation / (population*1/12)*100,000

Population: as of 1st Oct. 2019

Table 4. Newly notified TB cases and rates by major city, Japan, 2021

	Jan.		Summation (Jan.-Jan.)		Notification Rate (per 100,000)	
	Newly notified TB	Sputum Smear(+)	Newly notified TB	Sputum Smear(+)	Newly notified TB	Sputum Smear(+)
Total	240	83	240	83	7.7	2.7
Sapporo City	5	2	5	2	3.0	1.2
Sendai City	7	2	7	2	7.7	2.2
Saitama City	5	1	5	1	4.6	0.9
Chiba City	7	2	7	2	8.6	2.5
Yokohama City	15	4	15	4	4.8	1.3
Kawasaki City	8	1	8	1	6.3	0.8
Sagamihara City	6	4	6	4	10.0	6.6
Niigata City	2	2	2	2	3.0	3.0
Shizuoka City	2	0	2	0	3.4	0.0
Hamamatsu City	5	1	5	1	7.6	1.5
Nagoya City	24	10	24	10	12.4	5.2
Kyoto City	7	2	7	2	5.7	1.6
Osaka City	33	13	33	13	14.5	5.7
Sakai City	7	2	7	2	10.1	2.9
Kobe City	11	3	11	3	8.7	2.4
Okayama City	6	0	6	0	10.2	0.0
Hiroshima City	6	5	6	5	6.0	5.0
Kitakyushu City	11	1	11	1	14.0	1.3
Fukuoka City	11	5	11	5	8.3	3.8
Kumamoto City	2	0	2	0	3.2	0.0
23-ku area of Tokyo	60	23	60	23	7.5	2.9

Rate: summation / (population*1/12)*100,000

Population: as of 1st Oct. 2019

Major city: city with a population of one million or more.

Table 4 is a re-count of Table 3.

Table 5. LTBI cases and rates by sex and age, Japan, 2021

	Jan.			Summation (Jan.-Jan.)			(Ratio) LTBI/Newly notified cases		
	Total	Male	Female	Total	Male	Female	Total	Male	Female
Total	284	144	140	284	144	140	0.4	0.3	0.5
0~4	22	10	12	22	10	12	-	-	-
5~9	3	2	1	3	2	1	-	-	-
10~14	6	2	4	6	2	4	-	-	-
15~19	2	1	1	2	1	1	0.2	0.1	0.5
20~24	9	6	3	9	6	3	0.3	0.4	0.2
25~29	9	6	3	9	6	3	0.4	0.5	0.3
30~34	8	2	6	8	2	6	0.6	0.2	3.0
35~39	10	3	7	10	3	7	0.7	0.6	0.7
40~44	11	7	4	11	7	4	1.0	1.0	1.0
45~49	22	9	13	22	9	13	1.6	0.9	3.3
50~54	22	8	14	22	8	14	0.8	0.5	1.3
55~59	11	5	6	11	5	6	0.4	0.2	2.0
60~64	16	10	6	16	10	6	0.4	0.3	1.0
65~69	27	15	12	27	15	12	0.7	0.6	0.9
70~74	28	14	14	28	14	14	0.5	0.4	0.9
75~79	26	17	9	26	17	9	0.3	0.3	0.3
80~84	26	15	11	26	15	11	0.3	0.2	0.4
85~89	16	10	6	16	10	6	0.1	0.2	0.1
90~	10	2	8	10	2	8	0.1	0.0	0.2

LTBI: latent TB Infection

Number of LTBI is not included in the newly notified TB patients

Table 6. LTBI cases and rates by prefecture, Japan, 2021

	Jan.	Summation (Jan.-Jan.)	
	LTBI	LTBI	(Ratio) LTBI / new TB
Total	284	284	0.41
Hokkaido	11	11	0.65
Aomori	3	3	0.38
Iwate	2	2	0.67
Miyagi	2	2	0.20
Akita	0	0	0.00
Yamagata	1	1	0.20
Fukushima	0	0	0.00
Ibaraki	11	11	0.92
Tochigi	1	1	0.17
Gunma	9	9	1.80
Saitama	14	14	0.44
Chiba	16	16	0.35
Tokyo	51	51	0.61
Kanagawa	19	19	0.45
Niigata	2	2	0.22
Toyama	4	4	0.67
Ishikawa	3	3	0.60
Fukui	0	0	0.00
Yamanashi	1	1	0.17
Nagano	3	3	0.75
Gifu	4	4	0.29
Shizuoka	5	5	0.33
Aichi	24	24	0.52
Mie	2	2	0.29
Shiga	2	2	0.33
Kyoto	4	4	0.27
Osaka	28	28	0.41
Hyogo	8	8	0.26
Nara	4	4	0.33
Wakayama	0	0	0.00
Tottori	0	0	0.00
Shimane	1	1	0.50
Okayama	2	2	0.14
Hiroshima	4	4	0.33
Yamaguchi	4	4	0.36
Tokushima	1	1	0.13
Kagawa	2	2	0.33
Ehime	4	4	0.44
Kochi	0	0	0.00
Fukuoka	14	14	0.33
Saga	1	1	0.17
Nagasaki	1	1	0.11
Kumamoto	1	1	0.20
Oita	4	4	0.67
Miyazaki	0	0	0.00
Kagoshima	3	3	0.50
Okinawa	8	8	0.50

LTBI: Latent TB Infection

Number of LTBI is not included in the newly notified TB patients.

Table 7. LTBI cases and rates by major city, Japan, 2021

	Jan.	Summation (Jan.-Jan.)	
	LTBI	LTBI	(Ratio) LTBI / new TB
Total	108	108	0.45
Sapporo City	7	7	1.40
Sendai City	1	1	0.14
Saitama City	3	3	0.60
Chiba City	2	2	0.29
Yokohama City	5	5	0.33
Kawasaki City	5	5	0.63
Sagamihara City	1	1	0.17
Niigata City	2	2	1.00
Shizuoka City	2	2	1.00
Hamamatsu City	2	2	0.40
Nagoya City	13	13	0.54
Kyoto City	2	2	0.29
Osaka City	10	10	0.30
Sakai City	4	4	0.57
Kobe City	3	3	0.27
Okayama City	1	1	0.17
Hiroshima City	1	1	0.17
Kitakyushu City	2	2	0.18
Fukuoka City	5	5	0.45
Kumamoto City	0	0	0.00
23-ku area of Tokyo	37	37	0.62

LTBI: Latent TB Infection

Number of LTBI is not included in the newly notified TB patients,

Major city: city with a population of one million or more

Table 7 is a re-count of Table 6