



## Monthly Report of Tuberculosis Surveillance, Japan - April, 2021

The reporting and recording of tuberculosis (TB) and Latent TB Infection (LTBI) are managed at public health centers (PHCs) by the nationwide computerized TB surveillance system in Japan. A monthly report is compiled from the database automatically and regularly on 4<sup>th</sup> Friday of the next month, and an annual report is also produced much like the monthly report, but with sufficient time for data correction.

Tables and figures shown in the monthly reports are as follows.

### Figures

Figure 1. Number of newly notified TB cases by month, Japan, 2018-2021

Figure 2. Newly notified TB cases by sex and age, Japan, summation (Jan. -Apr.) 2021

Figure 3. Notification rate of TB cases by sex and age, Japan, summation (Jan. -Apr.) 2021

Figure 4. Notification rate of TB by prefecture, Japan, summation (Jan. -Apr.) 2021

Figure 5. Notification rate of TB by major city, Japan, summation (Jan. -Apr.) 2021

Figure 6. Number of LTBI, Japan, 2018-2021

Figure 7. Number of LTBI by sex and age group, Japan, summation (Jan. -Apr.) 2021

### Tables

Table 1. Newly notified TB cases and rates by sex and age, Japan, 2021

Table 2. Newly notified sputum smear positive pulmonary TB cases and rates by sex and age, Japan, 2021

Table 3. Newly notified TB cases and rates by prefecture, Japan, 2021

Table 4. Newly notified TB cases and rates by major city, Japan, 2021

Table 5. LTBI cases and rates by sex and age, Japan, 2021

Table 6. LTBI cases and rates by prefecture, Japan, 2021

Table 7. LTBI cases and rates by major city, Japan, 2021

Figure 1. Number of newly notified TB cases by month, Japan, 2018-2021

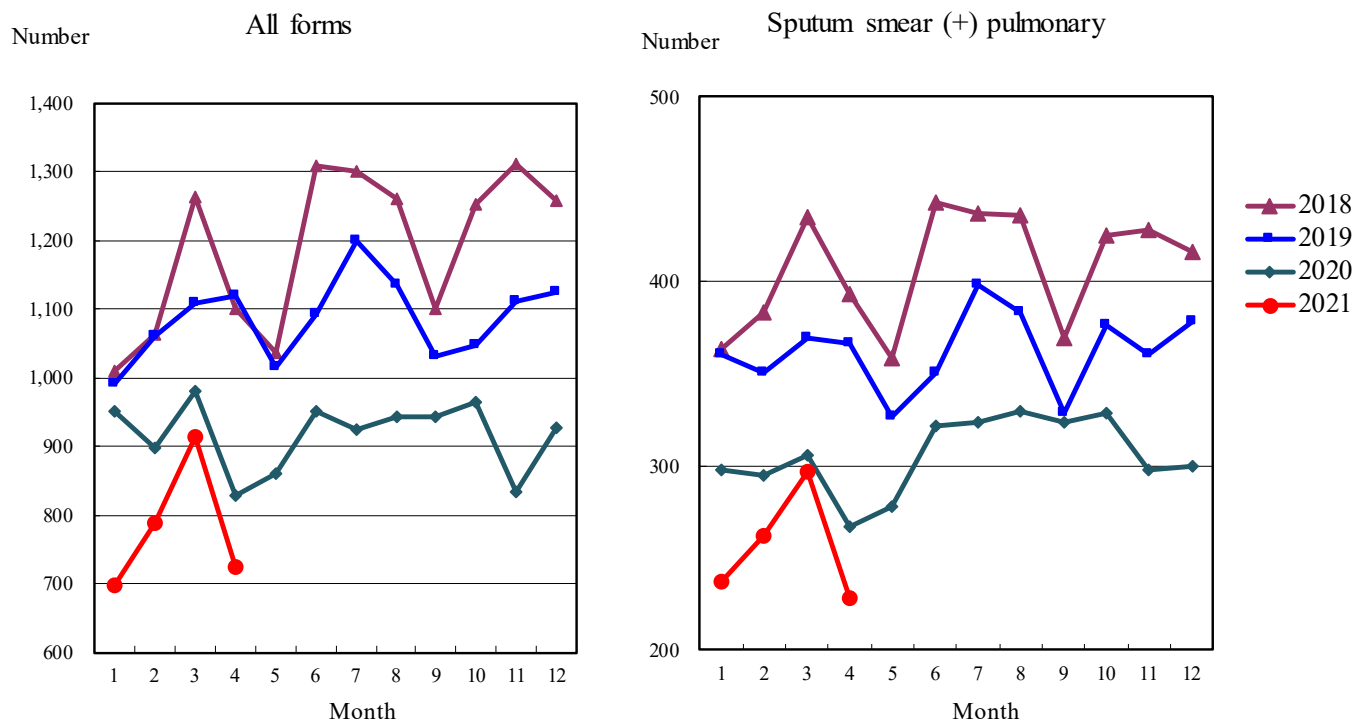


Figure 2. Newly notified TB patients by sex and age, Japan, summation (Jan.-Apr.) 2021

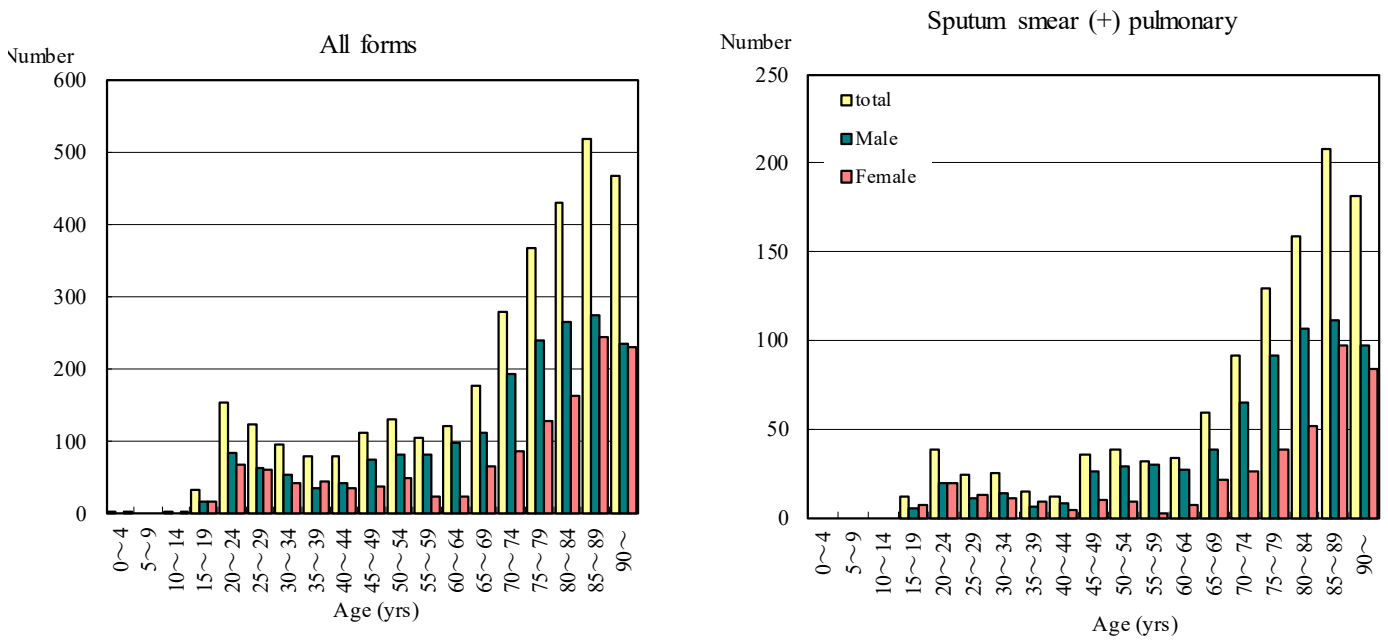


Figure 3. Notification rate of TB cases by sex and age, Japan, summation (Jan.-Apr.) 2021

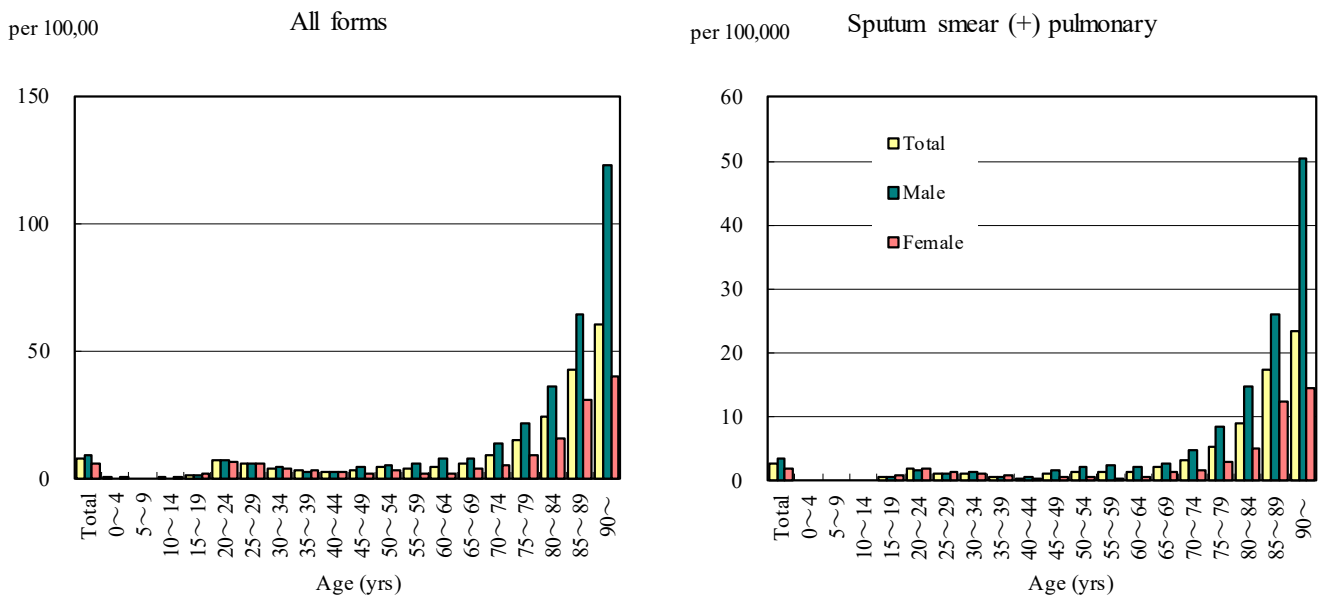


Figure 4. Notification rates of TB by prefecture, Japan, summation (Jan.-Apr.) 2021

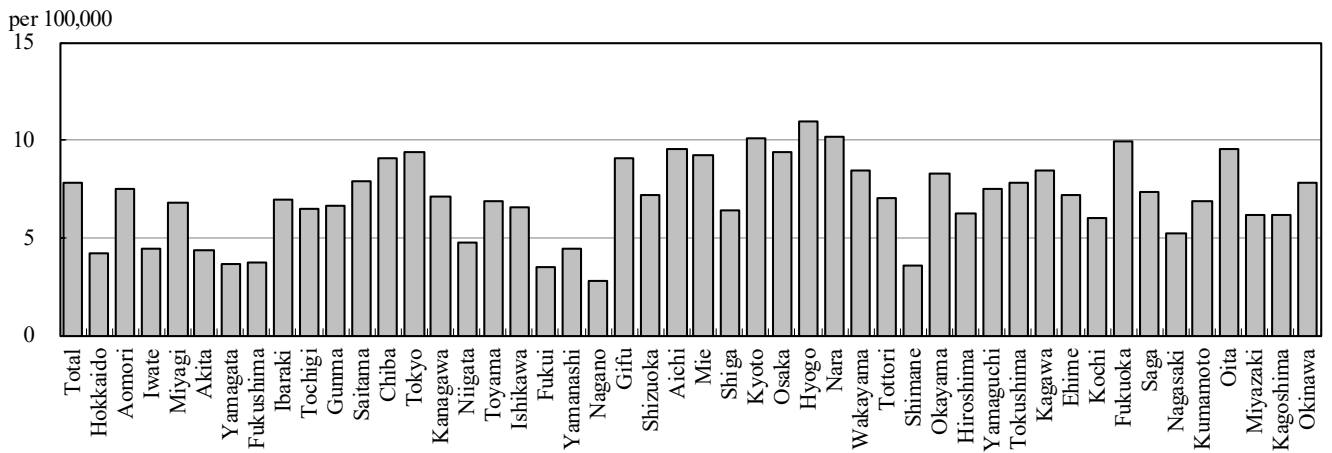


Figure 5. Notification rates of TB major city, Japan, summation (Jan.-Apr.) 2021

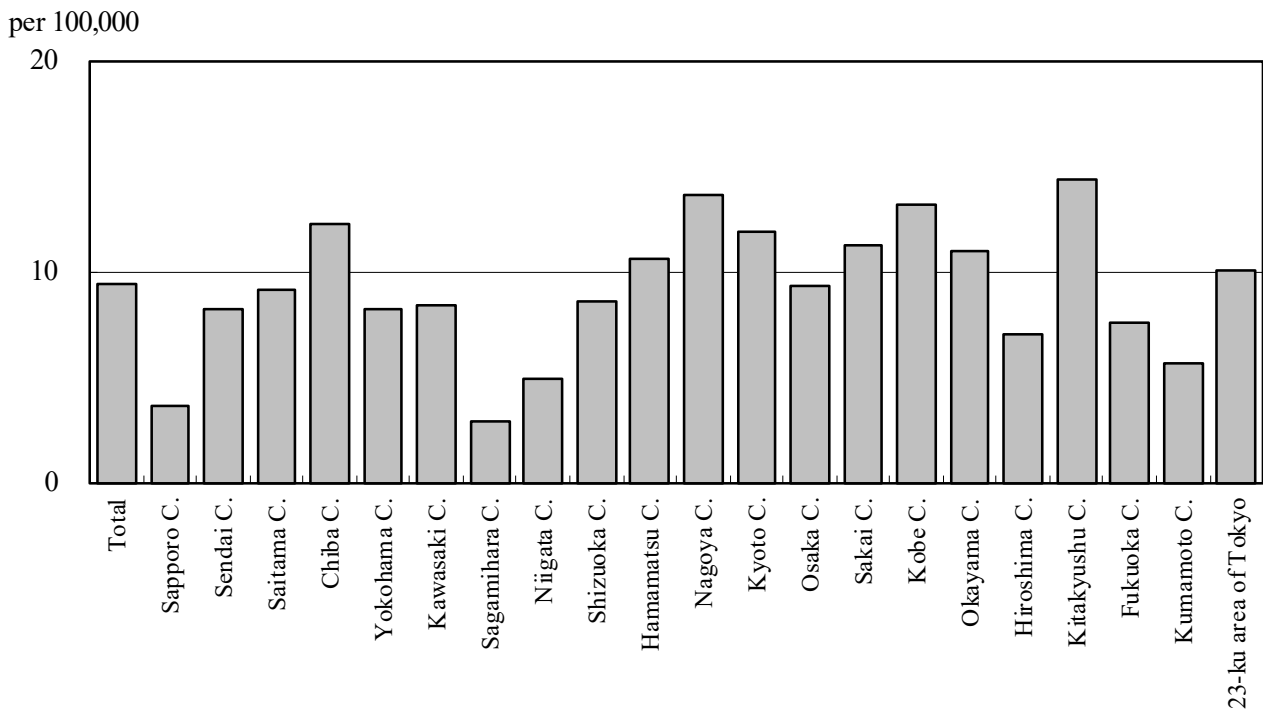


Figure 6. Number of LTBI, Japan, 2018-2021

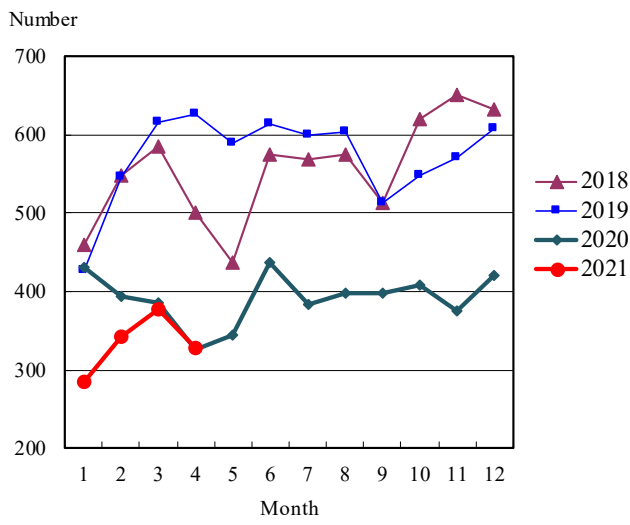


Figure 7. Number of LTBI by sex and age group, Japan, summation (Jan.-Apr.) 2021

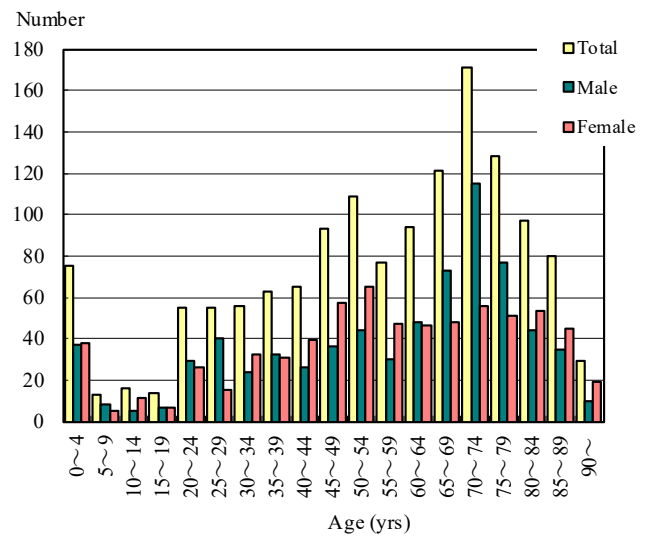


Table 1. Newly notified TB cases and rates by sex and age, Japan, 2021

	Apr.			Summation (Jan.-Apr.)			Notification rate (per 100,000)		
	Total	Male	Female	Total	Male	Female	Total	Male	Female
Total	723	451	272	3,278	1,947	1,331	7.8	9.5	6.2
0~4	1	0	1	3	0	3	0.2	0.0	0.4
5~9	0	0	0	0	0	0	0.0	0.0	0.0
10~14	1	0	1	2	0	2	0.1	0.0	0.2
15~19	14	4	10	34	16	18	1.8	1.6	1.9
20~24	33	22	11	153	84	69	7.2	7.6	6.7
25~29	24	16	8	124	63	61	6.0	5.9	6.1
30~34	27	13	14	96	53	43	4.3	4.6	3.9
35~39	20	8	12	80	35	45	3.2	2.7	3.6
40~44	17	8	9	79	43	36	2.7	2.9	2.5
45~49	25	18	7	111	74	37	3.4	4.5	2.3
50~54	35	21	14	131	82	49	4.6	5.7	3.5
55~59	24	15	9	106	81	25	4.1	6.3	1.9
60~64	20	16	4	122	97	25	4.9	7.8	2.0
65~69	38	28	10	176	111	65	6.1	7.9	4.3
70~74	69	51	18	279	193	86	9.6	14.1	5.6
75~79	77	52	25	367	239	128	15.2	22.1	9.6
80~84	88	57	31	430	266	164	24.2	36.3	15.7
85~89	116	71	45	518	274	244	43.0	64.5	31.3
90~	94	51	43	467	236	231	60.7	122.6	40.0

Temporary registrants = 82, Total of registrants and temporary registrants = 805

Rate: summation / (population\*4/12)\*100,000

Population: as of 1st Oct. 2019

Table 2. Newly notified sputum smear positive pulmonary TB cases and rates by sex and age, Japan, 2021

	Apr.			Summation (Jan.-Apr.)			Notification rate (per 100,000)		
	Total	Male	Female	Total	Male	Female	Total	Male	Female
Total	228	155	73	1,093	684	409	2.6	3.3	1.9
0~4	0	0	0	0	0	0	0.0	0.0	0.0
5~9	0	0	0	0	0	0	0.0	0.0	0.0
10~14	0	0	0	0	0	0	0.0	0.0	0.0
15~19	7	3	4	12	5	7	0.6	0.5	0.7
20~24	10	4	6	38	19	19	1.8	1.7	1.8
25~29	3	3	0	24	11	13	1.2	1.0	1.3
30~34	7	5	2	25	14	11	1.1	1.2	1.0
35~39	2	1	1	15	6	9	0.6	0.5	0.7
40~44	4	3	1	12	8	4	0.4	0.5	0.3
45~49	7	6	1	36	26	10	1.1	1.6	0.6
50~54	15	12	3	38	29	9	1.3	2.0	0.6
55~59	6	5	1	32	30	2	1.2	2.3	0.2
60~64	6	5	1	34	27	7	1.4	2.2	0.6
65~69	12	6	6	59	38	21	2.0	2.7	1.4
70~74	20	14	6	91	65	26	3.1	4.8	1.7
75~79	24	18	6	129	91	38	5.3	8.4	2.8
80~84	20	17	3	159	107	52	9.0	14.6	5.0
85~89	47	29	18	208	111	97	17.3	26.1	12.4
90~	38	24	14	181	97	84	23.5	50.4	14.6

Rate: summation / (population\*4/12)\*100,000

Population: as of 1st Oct. 2019

Table 3. Newly notified TB cases and rates by prefecture, Japan, 2021

	Apr.		Summation (Jan.-Apr.)		Notification rate (per 100,000)	
	Newly notified TB	Sputum smear (+)	Newly notified TB	Sputum smear (+)	Newly notified TB	Sputum smear (+)
Total	723	228	3,278	1,093	7.8	2.6
Hokkaido	10	2	73	31	4.2	1.8
Aomori	9	2	31	11	7.5	2.6
Iwate	4	2	18	8	4.4	2.0
Miyagi	10	2	52	18	6.8	2.3
Akita	4	2	14	7	4.3	2.2
Yamagata	2	1	13	5	3.6	1.4
Fukushima	6	1	23	12	3.7	2.0
Ibaraki	19	5	66	15	6.9	1.6
Tochigi	10	2	42	13	6.5	2.0
Gunma	10	1	43	11	6.6	1.7
Saitama	49	16	193	67	7.9	2.7
Chiba	45	14	189	48	9.1	2.3
Tokyo	116	44	434	171	9.4	3.7
Kanagawa	45	14	218	66	7.1	2.2
Niigata	8	1	35	10	4.7	1.3
Toyama	12	3	24	7	6.9	2.0
Ishikawa	3	3	25	10	6.6	2.6
Fukui	1	0	9	2	3.5	0.8
Yamanashi	0	0	12	2	4.4	0.7
Nagano	2	1	19	9	2.8	1.3
Gifu	14	5	60	19	9.1	2.9
Shizuoka	18	4	87	26	7.2	2.1
Aichi	50	16	241	80	9.6	3.2
Mie	14	3	55	16	9.3	2.7
Shiga	8	2	30	10	6.4	2.1
Kyoto	20	2	87	25	10.1	2.9
Osaka	43	17	276	94	9.4	3.2
Hyogo	55	25	200	77	11.0	4.2
Nara	15	4	45	16	10.1	3.6
Wakayama	5	0	26	9	8.4	2.9
Tottori	2	2	13	3	7.0	1.6
Shimane	1	1	8	4	3.6	1.8
Okayama	8	2	52	11	8.3	1.7
Hiroshima	9	1	58	22	6.2	2.4
Yamaguchi	5	2	34	6	7.5	1.3
Tokushima	2	0	19	7	7.8	2.9
Kagawa	5	1	27	9	8.5	2.8
Ehime	10	4	32	13	7.2	2.9
Kochi	2	1	14	4	6.0	1.7
Fukuoka	31	13	169	61	9.9	3.6
Saga	2	0	20	5	7.4	1.8
Nagasaki	4	1	23	7	5.2	1.6
Kumamoto	9	2	40	12	6.9	2.1
Oita	9	1	36	11	9.5	2.9
Miyazaki	4	1	22	7	6.1	2.0
Kagoshima	6	1	33	9	6.2	1.7
Okinawa	7	1	38	7	7.8	1.4

Rate: summation / (population\*4/12)\*100,000

Population: as of 1st Oct. 2019

Table 4. Newly notified TB cases and rates by major city, Japan, 2021

	Apr.		Summation (Jan.-Apr.)		Notification Rate (per 100,000)	
	Newly notified TB	Sputum Smear(+)	Newly notified TB	Sputum Smear(+)	Newly notified TB	Sputum Smear(+)
Total	263	91	1,169	395	9.4	3.2
Sapporo City	2	1	24	13	3.7	2.0
Sendai City	6	2	30	9	8.3	2.5
Saitama City	9	5	40	16	9.1	3.7
Chiba City	9	4	40	9	12.3	2.8
Yokohama City	17	7	103	29	8.2	2.3
Kawasaki City	11	3	43	13	8.4	2.5
Sagamihara City	2	1	7	3	2.9	1.2
Niigata City	6	0	13	3	4.9	1.1
Shizuoka City	4	2	20	6	8.6	2.6
Hamamatsu City	9	2	28	4	10.6	1.5
Nagoya City	23	7	106	38	13.7	4.9
Kyoto City	15	2	58	14	11.9	2.9
Osaka City	3	1	85	26	9.3	2.8
Sakai City	8	1	31	11	11.2	4.0
Kobe City	20	9	67	30	13.2	5.9
Okayama City	3	0	26	1	11.0	0.4
Hiroshima City	7	1	28	13	7.0	3.3
Kitakyushu City	11	4	45	12	14.4	3.8
Fukuoka City	6	2	40	17	7.5	3.2
Kumamoto City	3	1	14	3	5.7	1.2
23-ku area of Tokyo	89	36	321	125	10.0	3.9

Rate: summation / (population\*4/12)\*100,000

Population: as of 1st Oct. 2019

Major city: city with a population of one million or more.

Table 4 is a re-count of Table 3.

Table 5. LTBI cases and rates by sex and age, Japan, 2021

	Apr.			Summation (Jan.-Apr.)			(Ratio) LTBI/Newly notified cases		
	Total	Male	Female	Total	Male	Female	Total	Male	Female
Total	328	167	161	1,411	720	691	0.4	0.4	0.5
0~4	17	9	8	75	37	38	25.0	-	12.7
5~9	5	4	1	13	8	5	-	-	-
10~14	0	0	0	16	5	11	8.0	-	5.5
15~19	4	1	3	14	7	7	0.4	0.4	0.4
20~24	17	9	8	55	29	26	0.4	0.3	0.4
25~29	13	11	2	55	40	15	0.4	0.6	0.2
30~34	11	5	6	56	24	32	0.6	0.5	0.7
35~39	18	8	10	63	32	31	0.8	0.9	0.7
40~44	17	6	11	65	26	39	0.8	0.6	1.1
45~49	22	6	16	93	36	57	0.8	0.5	1.5
50~54	20	8	12	109	44	65	0.8	0.5	1.3
55~59	18	10	8	77	30	47	0.7	0.4	1.9
60~64	21	10	11	94	48	46	0.8	0.5	1.8
65~69	27	19	8	121	73	48	0.7	0.7	0.7
70~74	38	28	10	171	115	56	0.6	0.6	0.7
75~79	37	17	20	128	77	51	0.3	0.3	0.4
80~84	22	9	13	97	44	53	0.2	0.2	0.3
85~89	13	4	9	80	35	45	0.2	0.1	0.2
90~	8	3	5	29	10	19	0.1	0.0	0.1

LTBI: latent TB Infection

Number of LTBI is not included in the newly notified TB patients



Table 6. LTBI cases and rates by prefecture, Japan, 2021

	Apr.	Summation (Jan.-Apr.)	
	LTBI	LTBI	(Ratio) LTBI / new TB
Total	328	1,411	0.43
Hokkaido	8	50	0.68
Aomori	2	17	0.55
Iwate	1	24	1.33
Miyagi	3	12	0.23
Akita	1	4	0.29
Yamagata	0	7	0.54
Fukushima	1	12	0.52
Ibaraki	12	52	0.79
Tochigi	4	10	0.24
Gunma	3	25	0.58
Saitama	32	83	0.43
Chiba	18	78	0.41
Tokyo	56	217	0.50
Kanagawa	21	92	0.42
Niigata	2	15	0.43
Toyama	4	17	0.71
Ishikawa	2	13	0.52
Fukui	0	3	0.33
Yamanashi	3	11	0.92
Nagano	3	17	0.89
Gifu	3	15	0.25
Shizuoka	8	29	0.33
Aichi	25	100	0.41
Mie	1	10	0.18
Shiga	2	11	0.37
Kyoto	9	36	0.41
Osaka	19	94	0.34
Hyogo	15	54	0.27
Nara	5	16	0.36
Wakayama	4	17	0.65
Tottori	1	2	0.15
Shimane	1	2	0.25
Okayama	1	13	0.25
Hiroshima	3	33	0.57
Yamaguchi	2	11	0.32
Tokushima	1	9	0.47
Kagawa	9	13	0.48
Ehime	0	8	0.25
Kochi	1	3	0.21
Fukuoka	16	70	0.41
Saga	1	6	0.30
Nagasaki	3	9	0.39
Kumamoto	5	10	0.25
Oita	5	19	0.53
Miyazaki	2	8	0.36
Kagoshima	5	22	0.67
Okinawa	5	32	0.84

LTBI: Latent TB Infection

Number of LTBI is not included in the newly notified TB patients.

Table 7. LTBI cases and rates by major city, Japan, 2021

	Apr.	Summation (Jan.-Apr.)	
	LTBI	LTBI	(Ratio) LTBI / new TB
Total	115	485	0.41
Sapporo City	3	24	1.00
Sendai City	1	3	0.10
Saitama City	1	10	0.25
Chiba City	7	14	0.35
Yokohama City	4	28	0.27
Kawasaki City	8	28	0.65
Sagamihara City	2	11	1.57
Niigata City	1	8	0.62
Shizuoka City	3	10	0.50
Hamamatsu City	3	9	0.32
Nagoya City	13	51	0.48
Kyoto City	9	23	0.40
Osaka City	2	21	0.25
Sakai City	1	15	0.48
Kobe City	6	14	0.21
Okayama City	1	8	0.31
Hiroshima City	0	8	0.29
Kitakyushu City	3	15	0.33
Fukuoka City	4	17	0.43
Kumamoto City	2	3	0.21
23-ku area of Tokyo	41	165	0.51

LTBI: Latent TB Infection

Number of LTBI is not included in the newly notified TB patients,

Major city: city with a population of one million or more

Table 7 is a re-count of Table 6