



Monthly Report of Tuberculosis Surveillance, Japan - June, 2021

The reporting and recording of tuberculosis (TB) and Latent TB Infection (LTBI) are managed at public health centers (PHCs) by the nationwide computerized TB surveillance system in Japan. A monthly report is compiled from the database automatically and regularly on 4th Friday of the next month, and an annual report is also produced much like the monthly report, but with sufficient time for data correction.

Tables and figures shown in the monthly reports are as follows.

Figures

Figure 1. Number of newly notified TB cases by month, Japan, 2018-2021

Figure 2. Newly notified TB cases by sex and age, Japan, summation (Jan. -Jun.) 2021

Figure 3. Notification rate of TB cases by sex and age, Japan, summation (Jan. -Jun.) 2021

Figure 4. Notification rate of TB by prefecture, Japan, summation (Jan. -Jun.) 2021

Figure 5. Notification rate of TB by major city, Japan, summation (Jan. -Jun.) 2021

Figure 6. Number of LTBI, Japan, 2018-2021

Figure 7. Number of LTBI by sex and age group, Japan, summation (Jan. -Jun.) 2021

Tables

Table 1. Newly notified TB cases and rates by sex and age, Japan, 2021

Table 2. Newly notified sputum smear positive pulmonary TB cases and rates by sex and age, Japan, 2021

Table 3. Newly notified TB cases and rates by prefecture, Japan, 2021

Table 4. Newly notified TB cases and rates by major city, Japan, 2021

Table 5. LTBI cases and rates by sex and age, Japan, 2021

Table 6. LTBI cases and rates by prefecture, Japan, 2021

Table 7. LTBI cases and rates by major city, Japan, 2021

Figure 1. Number of newly notified TB cases by month, Japan, 2018-2021

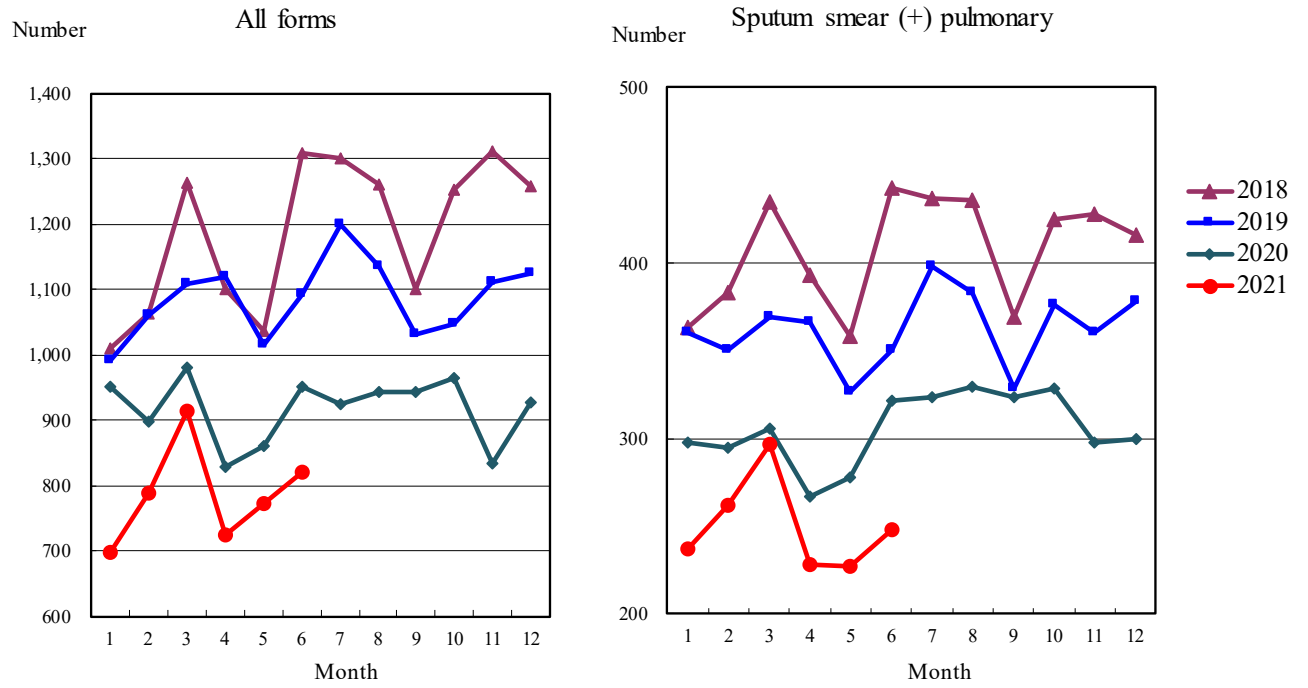


Figure 2. Newly notified TB patients by sex and age, Japan, summation (Jan.-Jun.) 2021

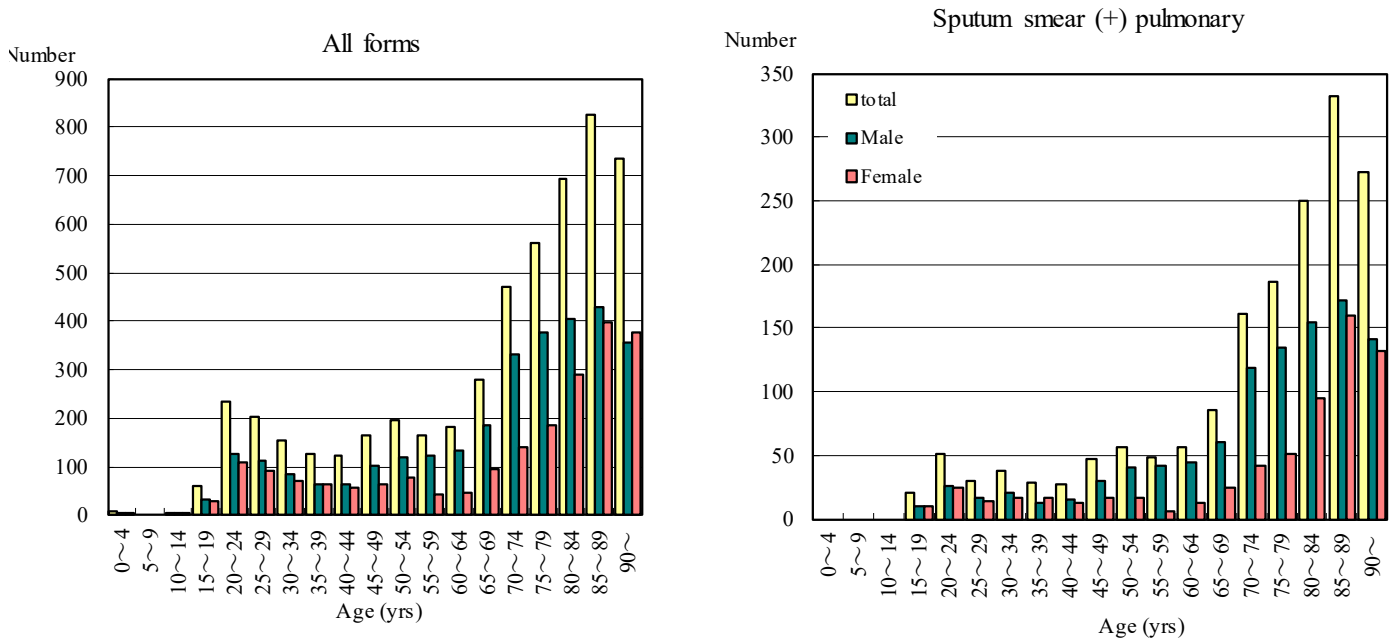


Figure 3. Notification rate of TB cases by sex and age, Japan, summation (Jan.-Jun.) 2021

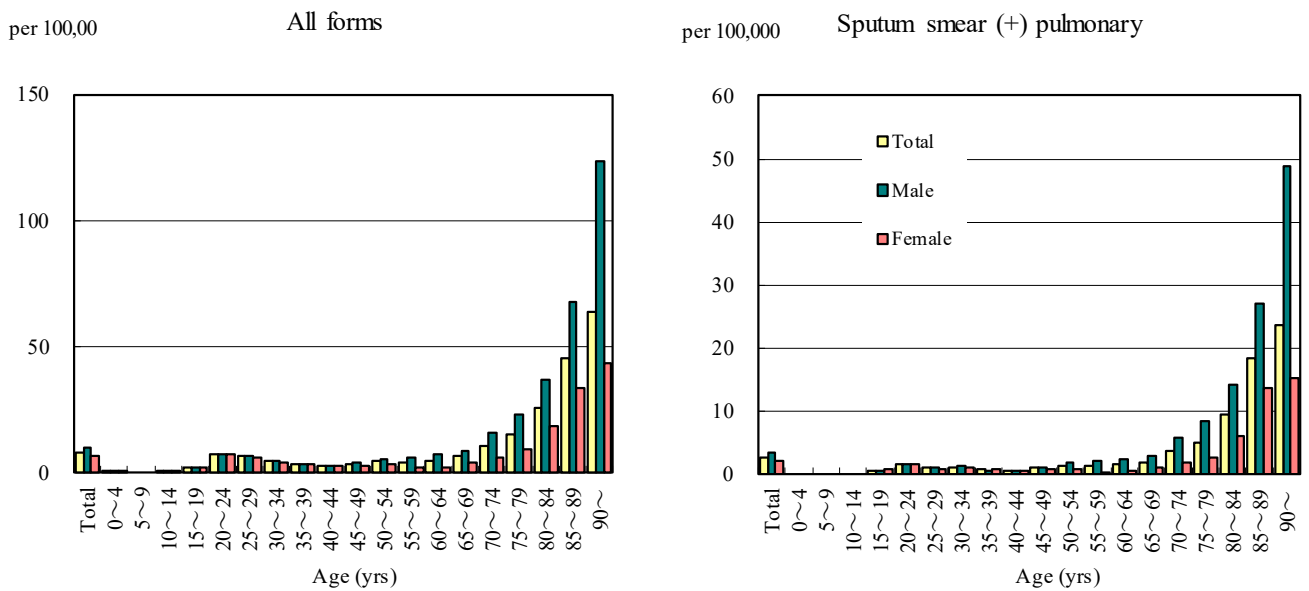


Figure 4. Notification rates of TB by prefecture, Japan, summation (Jan.-Jun.) 2021

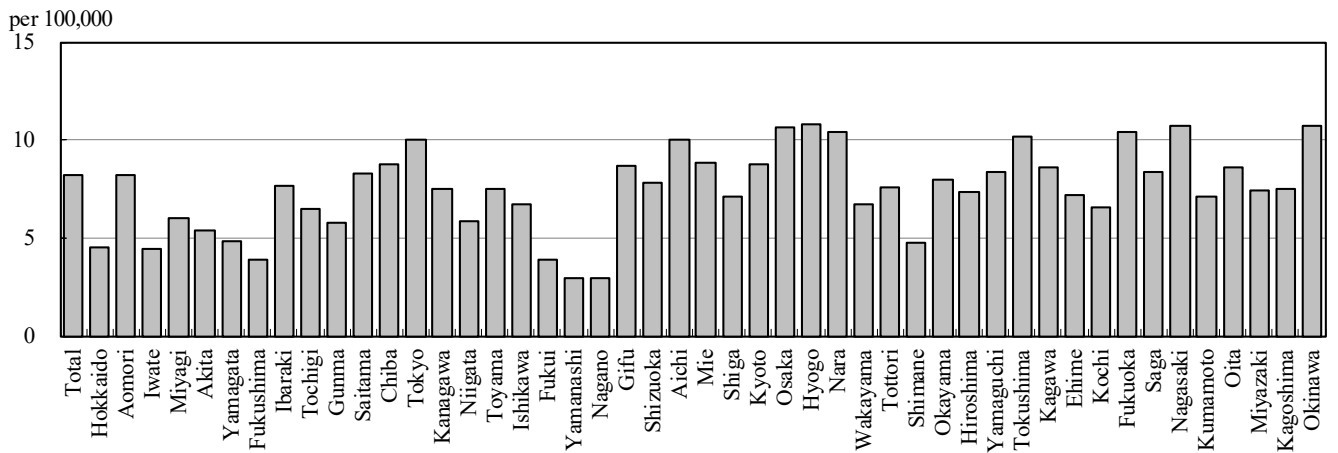


Figure 5. Notification rates of TB major city, Japan, summation (Jan.-Jun.) 2021

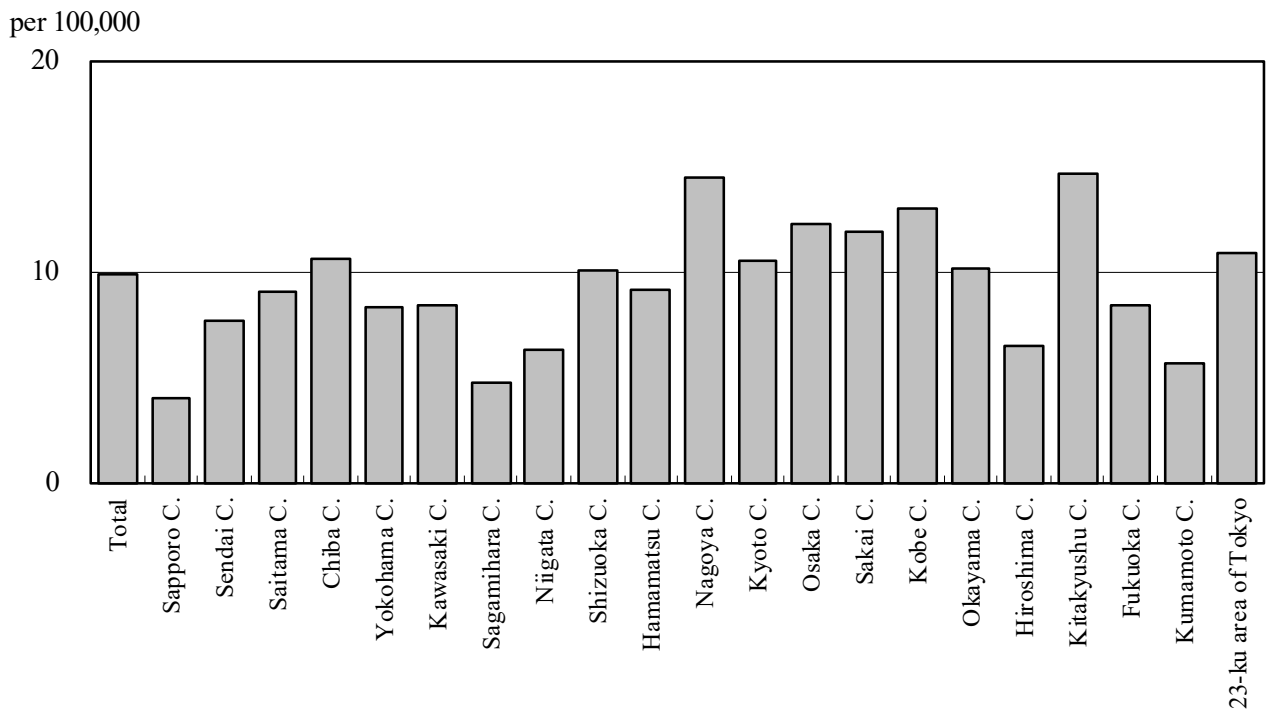


Figure 6. Number of LTBI, Japan, 2018-2021

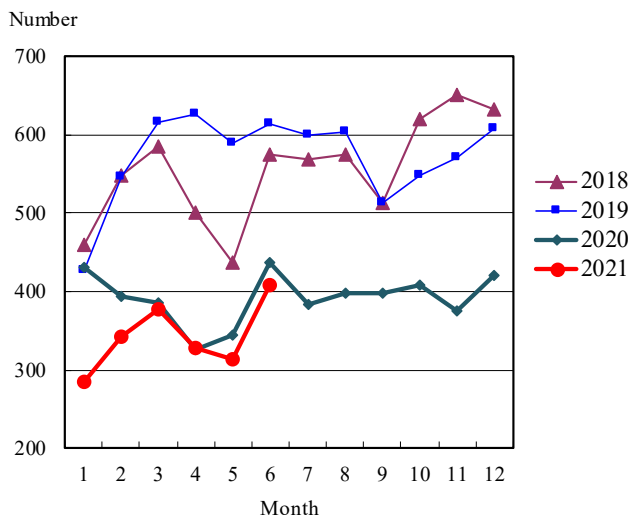


Figure 7. Number of LTBI by sex and age group, Japan, summation (Jan.-Jun.) 2021

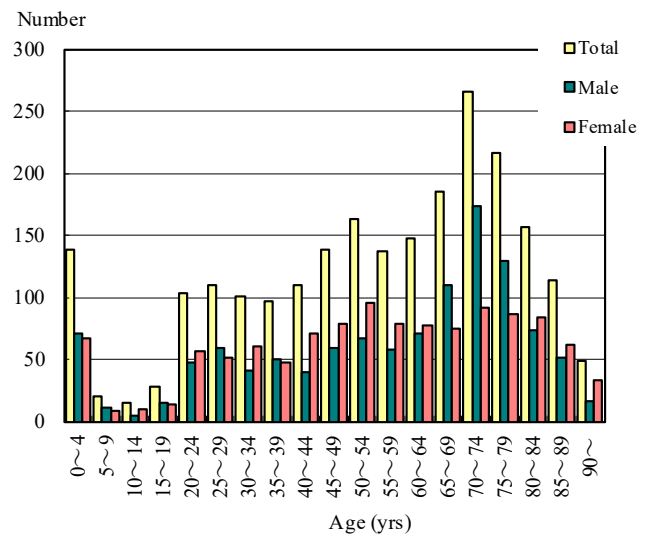


Table 1. Newly notified TB cases and rates by sex and age, Japan, 2021

	Jun.			Summation (Jan.-Jun.)			Notification rate (per 100,000)		
	Total	Male	Female	Total	Male	Female	Total	Male	Female
Total	819	490	329	5,190	3,048	2,142	8.2	9.9	6.6
0~4	1	1	0	8	2	6	0.3	0.2	0.5
5~9	0	0	0	0	0	0	0.0	0.0	0.0
10~14	1	1	0	4	1	3	0.1	0.1	0.2
15~19	15	11	4	61	32	29	2.1	2.1	2.0
20~24	36	21	15	235	125	110	7.4	7.6	7.1
25~29	33	19	14	203	111	92	6.5	6.9	6.1
30~34	25	13	12	153	84	69	4.5	4.9	4.2
35~39	17	9	8	125	63	62	3.3	3.3	3.3
40~44	18	10	8	122	64	58	2.8	2.9	2.7
45~49	12	6	6	165	103	62	3.4	4.2	2.6
50~54	29	15	14	197	118	79	4.6	5.5	3.7
55~59	21	12	9	166	122	44	4.3	6.3	2.3
60~64	25	15	10	182	135	47	4.8	7.3	2.5
65~69	55	40	15	281	187	94	6.5	8.9	4.2
70~74	85	64	21	472	333	139	10.9	16.3	6.1
75~79	82	69	13	562	376	186	15.5	23.2	9.3
80~84	118	63	55	694	405	289	26.0	36.8	18.5
85~89	133	63	70	826	430	396	45.7	67.5	33.9
90~	113	58	55	734	357	377	63.6	123.6	43.5

Temporary registrants = 71, Total of registrants and temporary registrants = 890

Rate: summation / (population*6/12)*100,000

Population: as of 1st Oct. 2019

Table 2. Newly notified sputum smear positive pulmonary TB cases and rates by sex and age, Japan, 2021

	Jun.			Summation (Jan.-Jun.)			Notification rate (per 100,000)		
	Total	Male	Female	Total	Male	Female	Total	Male	Female
Total	248	149	99	1,690	1,038	652	2.7	3.4	2.0
0~4	0	0	0	0	0	0	0.0	0.0	0.0
5~9	0	0	0	0	0	0	0.0	0.0	0.0
10~14	0	0	0	0	0	0	0.0	0.0	0.0
15~19	3	3	0	20	10	10	0.7	0.7	0.7
20~24	5	2	3	51	26	25	1.6	1.6	1.6
25~29	2	0	2	30	16	14	1.0	1.0	0.9
30~34	5	2	3	38	21	17	1.1	1.2	1.0
35~39	3	2	1	29	12	17	0.8	0.6	0.9
40~44	4	3	1	27	15	12	0.6	0.7	0.6
45~49	1	0	1	47	30	17	1.0	1.2	0.7
50~54	6	4	2	57	40	17	1.3	1.9	0.8
55~59	5	3	2	48	42	6	1.2	2.2	0.3
60~64	9	6	3	56	44	12	1.5	2.4	0.6
65~69	13	9	4	85	60	25	2.0	2.8	1.1
70~74	33	26	7	161	119	42	3.7	5.8	1.8
75~79	26	22	4	186	135	51	5.1	8.3	2.5
80~84	44	23	21	250	155	95	9.4	14.1	6.1
85~89	46	20	26	332	172	160	18.4	27.0	13.7
90~	43	24	19	273	141	132	23.6	48.8	15.2

Rate: summation / (population*6/12)*100,000

Population: as of 1st Oct. 2019

Table 3. Newly notified TB cases and rates by prefecture, Japan, 2021

	Jun.		Summation (Jan.-Jun.)		Notification rate (per 100,000)	
	Newly notified TB	Sputum smear (+)	Newly notified TB	Sputum smear (+)	Newly notified TB	Sputum smear (+)
Total	819	248	5,190	1,690	8.2	2.7
Hokkaido	15	5	119	47	4.5	1.8
Aomori	9	3	51	20	8.2	3.2
Iwate	4	2	27	14	4.4	2.3
Miyagi	8	1	69	23	6.0	2.0
Akita	8	3	26	13	5.4	2.7
Yamagata	3	2	26	13	4.8	2.4
Fukushima	4	1	36	15	3.9	1.6
Ibaraki	15	5	109	26	7.6	1.8
Tochigi	10	4	63	20	6.5	2.1
Gunma	3	0	56	12	5.8	1.2
Saitama	53	14	304	94	8.3	2.6
Chiba	38	10	273	74	8.7	2.4
Tokyo	127	34	697	255	10.0	3.7
Kanagawa	57	20	344	102	7.5	2.2
Niigata	16	7	65	22	5.8	2.0
Toyama	9	2	39	11	7.5	2.1
Ishikawa	3	1	38	15	6.7	2.6
Fukui	5	1	15	3	3.9	0.8
Yamanashi	0	0	12	2	3.0	0.5
Nagano	4	0	30	11	2.9	1.1
Gifu	7	3	86	27	8.7	2.7
Shizuoka	17	5	142	45	7.8	2.5
Aichi	64	17	377	119	10.0	3.2
Mie	12	5	79	29	8.9	3.3
Shiga	7	1	50	12	7.1	1.7
Kyoto	8	6	113	39	8.7	3.0
Osaka	59	19	468	157	10.6	3.6
Hyogo	52	19	296	112	10.8	4.1
Nara	14	6	69	25	10.4	3.8
Wakayama	7	3	31	11	6.7	2.4
Tottori	5	2	21	6	7.6	2.2
Shimane	4	1	16	5	4.7	1.5
Okayama	13	4	75	17	7.9	1.8
Hiroshima	19	4	103	39	7.3	2.8
Yamaguchi	4	0	57	10	8.4	1.5
Tokushima	9	4	37	14	10.2	3.8
Kagawa	7	0	41	13	8.6	2.7
Ehime	5	1	48	20	7.2	3.0
Kochi	4	3	23	8	6.6	2.3
Fukuoka	44	10	265	83	10.4	3.3
Saga	4	1	34	10	8.3	2.5
Nagasaki	15	3	71	16	10.7	2.4
Kumamoto	12	5	62	21	7.1	2.4
Oita	7	3	49	16	8.6	2.8
Miyazaki	6	1	40	8	7.5	1.5
Kagoshima	7	3	60	20	7.5	2.5
Okinawa	16	4	78	16	10.7	2.2

Rate: summation / (population*6/12)*100,000

Population: as of 1st Oct. 2019

Table 4. Newly notified TB cases and rates by major city, Japan, 2021

	Jun.		Summation (Jan.-Jun.)		Notification Rate (per 100,000)	
	Newly notified TB	Sputum Smear(+)	Newly notified TB	Sputum Smear(+)	Newly notified TB	Sputum Smear(+)
Total	279	82	1,841	608	9.9	3.3
Sapporo City	0	0	39	19	4.0	1.9
Sendai City	6	1	42	13	7.7	2.4
Saitama City	10	1	59	17	9.0	2.6
Chiba City	6	1	52	13	10.6	2.7
Yokohama City	26	10	156	46	8.3	2.5
Kawasaki City	11	3	64	19	8.4	2.5
Sagamihara City	5	2	17	6	4.7	1.7
Niigata City	7	3	25	9	6.3	2.3
Shizuoka City	2	2	35	11	10.0	3.1
Hamamatsu City	3	0	36	5	9.1	1.3
Nagoya City	30	10	168	60	14.4	5.2
Kyoto City	6	5	77	27	10.5	3.7
Osaka City	7	2	168	47	12.3	3.4
Sakai City	9	3	49	16	11.8	3.9
Kobe City	19	8	99	43	13.0	5.6
Okayama City	6	1	36	2	10.2	0.6
Hiroshima City	5	1	39	17	6.5	2.8
Kitakyushu City	10	2	69	20	14.7	4.3
Fukuoka City	13	1	67	20	8.4	2.5
Kumamoto City	4	2	21	7	5.7	1.9
23-ku area of Tokyo	94	24	523	191	10.9	4.0

Rate: summation / (population*6/12)*100,000

Population: as of 1st Oct. 2019

Major city: city with a population of one million or more.

Table 4 is a re-count of Table 3.

Table 5. LTBI cases and rates by sex and age, Japan, 2021

	Jun.			Summation (Jan.-Jun.)			(Ratio) LTBI/Newly notified cases		
	Total	Male	Female	Total	Male	Female	Total	Male	Female
Total	409	205	204	2,293	1,146	1,147	0.4	0.4	0.5
0~4	30	15	15	138	71	67	17.3	35.5	11.2
5~9	3	3	0	20	11	9	-	-	-
10~14	0	0	0	15	5	10	3.8	5.0	3.3
15~19	6	3	3	28	15	13	0.5	0.5	0.4
20~24	26	8	18	103	47	56	0.4	0.4	0.5
25~29	31	11	20	110	59	51	0.5	0.5	0.6
30~34	20	6	14	101	41	60	0.7	0.5	0.9
35~39	16	12	4	97	50	47	0.8	0.8	0.8
40~44	18	8	10	110	39	71	0.9	0.6	1.2
45~49	23	9	14	138	59	79	0.8	0.6	1.3
50~54	19	8	11	163	67	96	0.8	0.6	1.2
55~59	21	11	10	137	58	79	0.8	0.5	1.8
60~64	25	11	14	148	71	77	0.8	0.5	1.6
65~69	28	20	8	185	110	75	0.7	0.6	0.8
70~74	44	30	14	265	174	91	0.6	0.5	0.7
75~79	46	27	19	216	129	87	0.4	0.3	0.5
80~84	24	10	14	157	73	84	0.2	0.2	0.3
85~89	18	10	8	113	51	62	0.1	0.1	0.2
90~	11	3	8	49	16	33	0.1	0.0	0.1

LTBI: latent TB Infection

Number of LTBI is not included in the newly notified TB patients

Table 6. LTBI cases and rates by prefecture, Japan, 2021

	Jun.	Summation (Jan.-Jun.)	
	LTBI	LTBI	(Ratio) LTBI /new TB
Total	409	2,293	0.44
Hokkaido	6	79	0.66
Aomori	9	32	0.63
Iwate	2	30	1.11
Miyagi	11	31	0.45
Akita	3	11	0.42
Yamagata	5	14	0.54
Fukushima	2	15	0.42
Ibaraki	6	66	0.61
Tochigi	3	18	0.29
Gunma	2	29	0.52
Saitama	15	120	0.39
Chiba	21	134	0.49
Tokyo	47	323	0.46
Kanagawa	59	178	0.52
Niigata	6	27	0.42
Toyama	7	27	0.69
Ishikawa	1	20	0.53
Fukui	0	4	0.27
Yamanashi	0	11	0.92
Nagano	2	25	0.83
Gifu	9	33	0.38
Shizuoka	5	44	0.31
Aichi	25	158	0.42
Mie	7	19	0.24
Shiga	5	19	0.38
Kyoto	18	61	0.54
Osaka	27	187	0.40
Hyogo	21	91	0.31
Nara	3	22	0.32
Wakayama	7	29	0.94
Tottori	1	3	0.14
Shimane	1	3	0.19
Okayama	4	25	0.33
Hiroshima	4	43	0.42
Yamaguchi	1	17	0.30
Tokushima	2	13	0.35
Kagawa	0	15	0.37
Ehime	2	12	0.25
Kochi	0	4	0.17
Fukuoka	28	125	0.47
Saga	5	16	0.47
Nagasaki	0	14	0.20
Kumamoto	4	20	0.32
Oita	4	24	0.49
Miyazaki	3	15	0.38
Kagoshima	8	38	0.63
Okinawa	8	49	0.63

LTBI: Latent TB Infection

Number of LTBI is not included in the newly notified TB patients.

Table 7. LTBI cases and rates by major city, Japan, 2021

	Jun.	Summation (Jan.-Jun.)	
	LTBI	LTBI	(Ratio) LTBI / new TB
Total	148	827	0.45
Sapporo City	1	40	1.03
Sendai City	6	14	0.33
Saitama City	4	18	0.31
Chiba City	2	18	0.35
Yokohama City	9	48	0.31
Kawasaki City	21	54	0.84
Sagamihara City	3	17	1.00
Niigata City	3	12	0.48
Shizuoka City	1	12	0.34
Hamamatsu City	1	14	0.39
Nagoya City	10	75	0.45
Kyoto City	15	43	0.56
Osaka City	8	75	0.45
Sakai City	2	18	0.37
Kobe City	11	30	0.30
Okayama City	2	11	0.31
Hiroshima City	0	9	0.23
Kitakyushu City	4	25	0.36
Fukuoka City	8	40	0.60
Kumamoto City	1	7	0.33
23-ku area of Tokyo	36	247	0.47

LTBI: Latent TB Infection

Number of LTBI is not included in the newly notified TB patients,

Major city: city with a population of one million or more

Table 7 is a re-count of Table 6