



Monthly Report of Tuberculosis Surveillance, Japan - November, 2021

The reporting and recording of tuberculosis (TB) and Latent TB Infection (LTBI) are managed at public health centers (PHCs) by the nationwide computerized TB surveillance system in Japan. A monthly report is compiled from the database automatically and regularly on 4th Friday of the next month, and an annual report is also produced much like the monthly report, but with sufficient time for data correction.

Tables and figures shown in the monthly reports are as follows.

Figures

Figure 1. Number of newly notified TB cases by month, Japan, 2018-2021

Figure 2. Newly notified TB cases by sex and age, Japan, summation (Jan. -Nov.) 2021

Figure 3. Notification rate of TB cases by sex and age, Japan, summation (Jan. -Nov.) 2021

Figure 4. Notification rate of TB by prefecture, Japan, summation (Jan. -Nov.) 2021

Figure 5. Notification rate of TB by major city, Japan, summation (Jan. -Nov.) 2021

Figure 6. Number of LTBI, Japan, 2018-2021

Figure 7. Number of LTBI by sex and age group, Japan, summation (Jan. -Nov.) 2021

Tables

Table 1. Newly notified TB cases and rates by sex and age, Japan, 2021

Table 2. Newly notified sputum smear positive pulmonary TB cases and rates by sex and age, Japan, 2021

Table 3. Newly notified TB cases and rates by prefecture, Japan, 2021

Table 4. Newly notified TB cases and rates by major city, Japan, 2021

Table 5. LTBI cases and rates by sex and age, Japan, 2021

Table 6. LTBI cases and rates by prefecture, Japan, 2021

Table 7. LTBI cases and rates by major city, Japan, 2021

Figure 1. Number of newly notified TB cases by month, Japan, 2018-2021

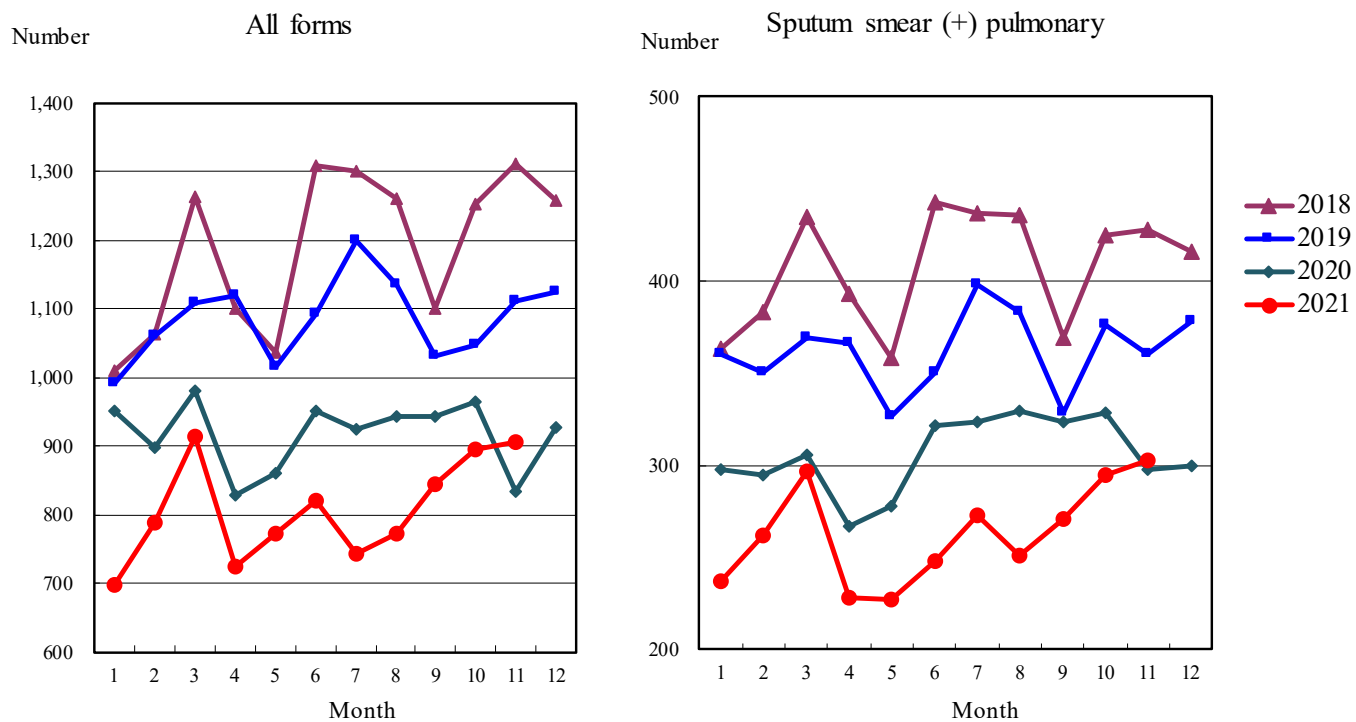


Figure 2. Newly notified TB patients by sex and age, Japan, summation (Jan.-Nov.) 2021

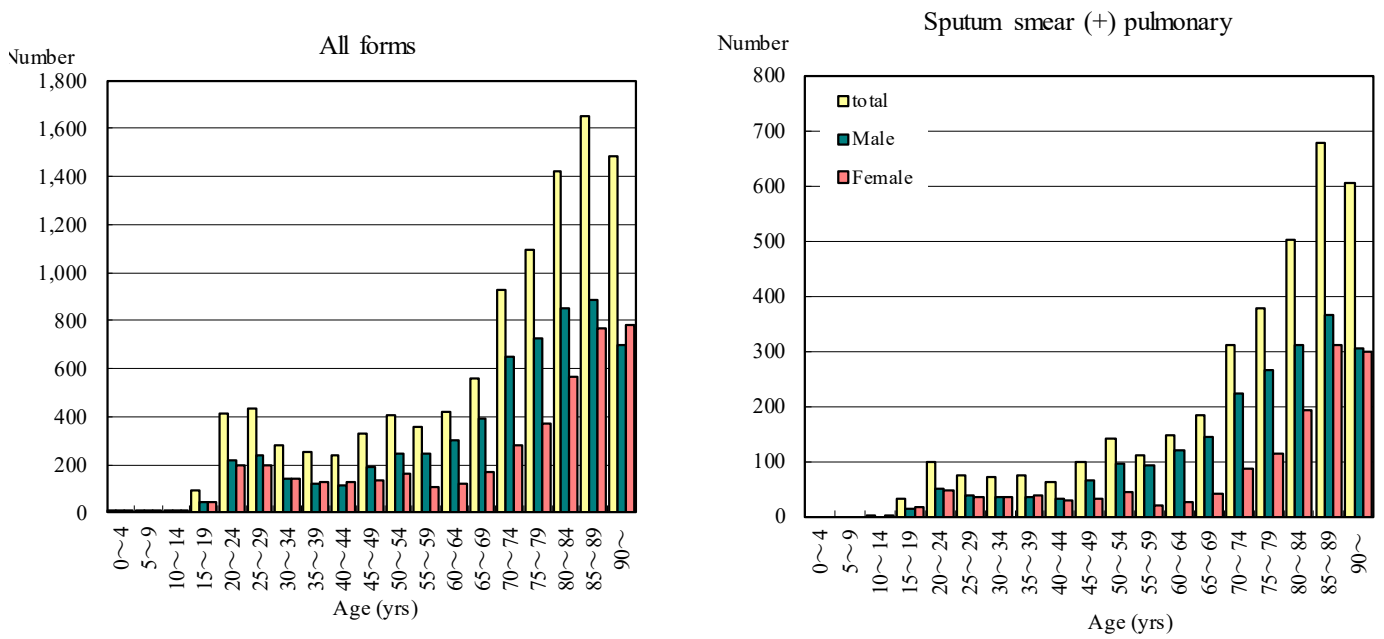


Figure 3. Notification rate of TB cases by sex and age, Japan, summation (Jan.-Nov.) 2021

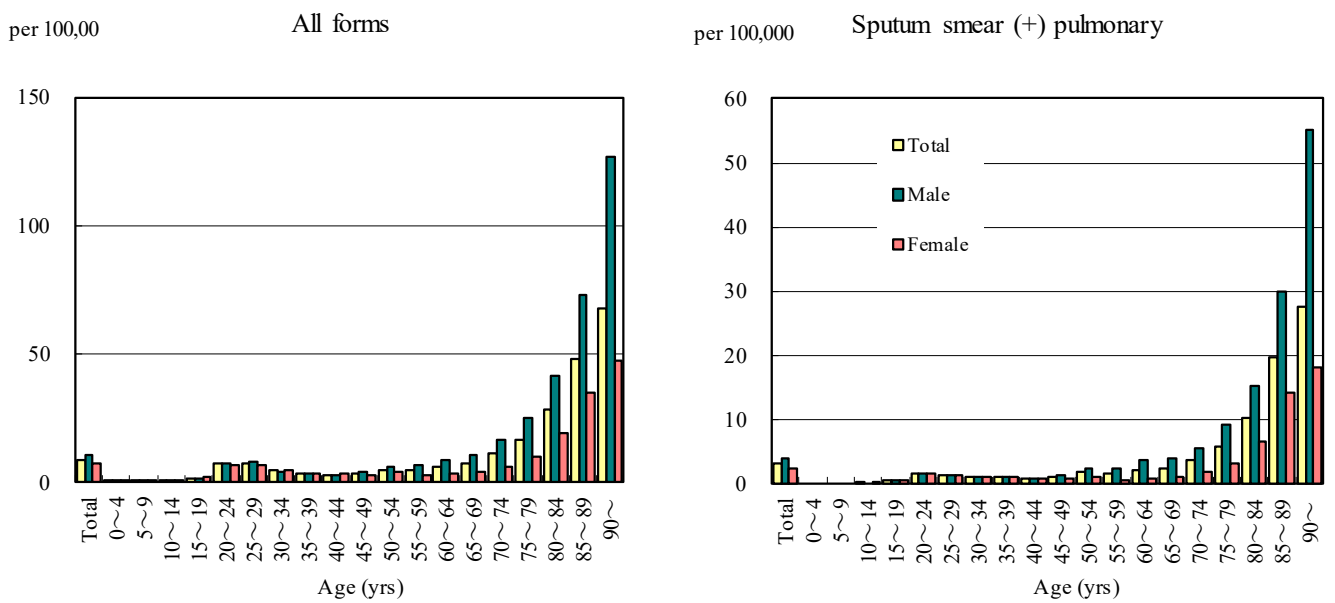


Figure 4. Notification rates of TB by prefecture, Japan, summation (Jan.-Nov.) 2021

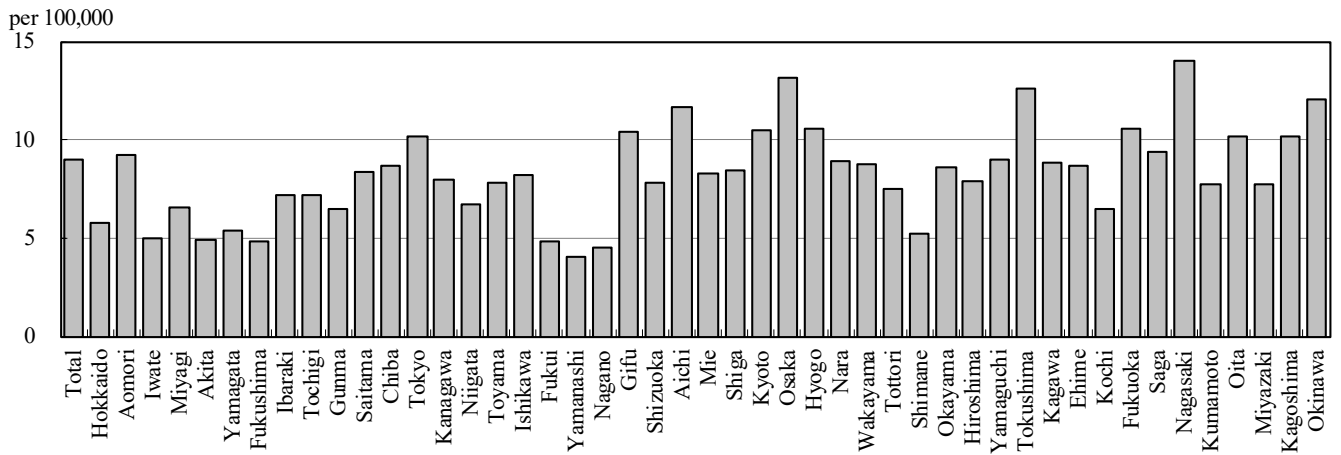


Figure 5. Notification rates of TB major city, Japan, summation (Jan.-Nov.) 2021

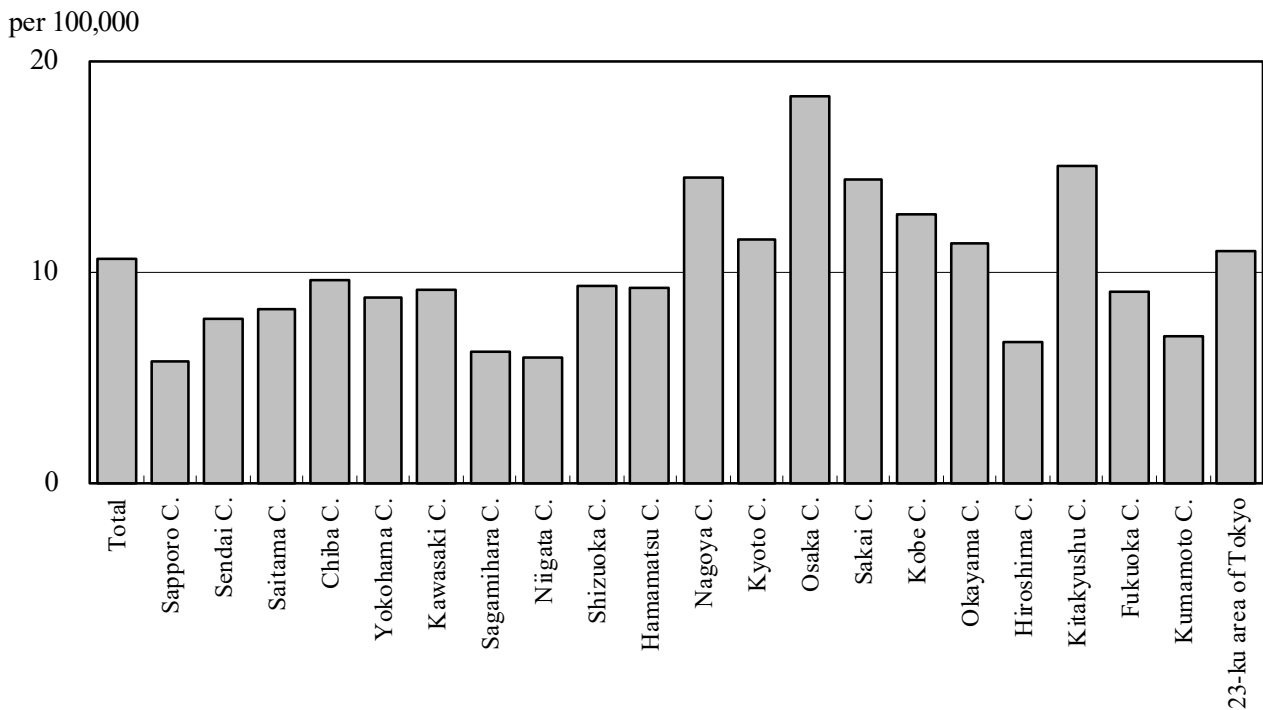


Figure 6. Number of LTBI, Japan, 2018-2021

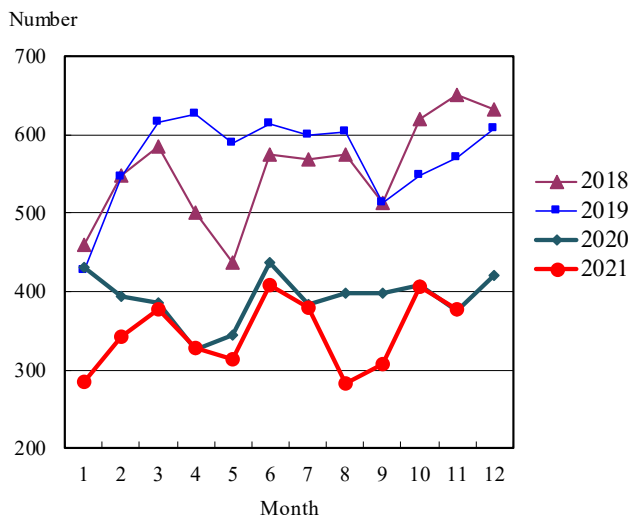


Figure 7. Number of LTBI by sex and age group, Japan, summation (Jan.-Nov.) 2021

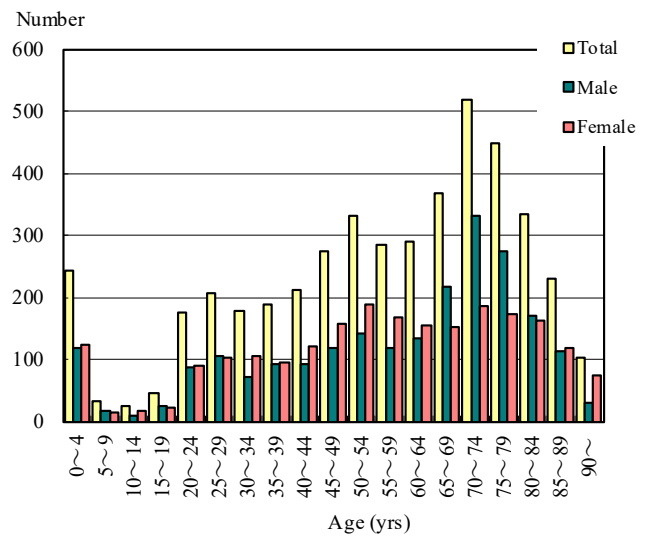


Table 1. Newly notified TB cases and rates by sex and age, Japan, 2021

	Nov.			Summation (Jan.-Nov.)			Notification rate (per 100,000)		
	Total	Male	Female	Total	Male	Female	Total	Male	Female
Total	905	538	367	10,386	6,075	4,311	9.0	10.8	7.3
0~4	0	0	0	12	3	9	0.3	0.1	0.4
5~9	1	0	1	3	2	1	0.1	0.1	0.0
10~14	0	0	0	10	3	7	0.2	0.1	0.3
15~19	3	2	1	91	44	47	1.7	1.6	1.8
20~24	26	18	8	415	221	194	7.2	7.5	6.9
25~29	31	17	14	437	238	199	7.5	7.9	7.0
30~34	20	12	8	282	140	142	4.6	4.5	4.7
35~39	21	6	15	251	123	128	3.7	3.5	3.8
40~44	23	11	12	238	112	126	3.1	2.8	3.3
45~49	31	15	16	327	193	134	3.6	4.2	3.0
50~54	43	27	16	405	244	161	5.1	6.1	4.0
55~59	32	24	8	356	249	107	4.9	6.8	2.9
60~64	45	30	15	422	300	122	6.2	8.9	3.5
65~69	44	33	11	559	393	166	7.4	10.7	4.3
70~74	71	55	16	929	649	280	11.0	16.3	6.3
75~79	90	58	32	1,095	724	371	16.9	25.1	10.3
80~84	130	87	43	1,420	852	568	28.7	41.6	19.5
85~89	143	79	64	1,653	884	769	48.2	72.8	34.7
90~	151	64	87	1,481	701	780	67.6	126.9	47.6

Temporary registrants = 43, Total of registrants and temporary registrants = 948

Rate: summation / (population*11/12)*100,000

Population: as of 1st Oct. 2020

Table 2. Newly notified sputum smear positive pulmonary TB cases and rates by sex and age, Japan, 2021

	Nov.			Summation (Jan.-Nov.)			Notification rate (per 100,000)		
	Total	Male	Female	Total	Male	Female	Total	Male	Female
Total	303	181	122	3,561	2,188	1,373	3.1	3.9	2.3
0~4	0	0	0	0	0	0	0.0	0.0	0.0
5~9	0	0	0	0	0	0	0.0	0.0	0.0
10~14	0	0	0	2	0	2	0.0	0.0	0.1
15~19	1	1	0	32	15	17	0.6	0.6	0.7
20~24	9	8	1	98	51	47	1.7	1.7	1.7
25~29	4	1	3	74	39	35	1.3	1.3	1.2
30~34	4	4	0	71	35	36	1.2	1.1	1.2
35~39	3	1	2	73	34	39	1.1	1.0	1.2
40~44	6	4	2	61	31	30	0.8	0.8	0.8
45~49	8	3	5	98	65	33	1.1	1.4	0.7
50~54	21	14	7	140	97	43	1.7	2.4	1.1
55~59	10	7	3	110	91	19	1.5	2.5	0.5
60~64	13	11	2	148	121	27	2.2	3.6	0.8
65~69	16	13	3	184	143	41	2.4	3.9	1.1
70~74	17	12	5	310	223	87	3.7	5.6	2.0
75~79	28	19	9	377	264	113	5.8	9.2	3.1
80~84	34	21	13	503	310	193	10.2	15.2	6.6
85~89	54	30	24	676	364	312	19.7	30.0	14.1
90~	75	32	43	604	305	299	27.6	55.2	18.2

Rate: summation / (population*11/12)*100,000

Population: as of 1st Oct. 2020

Table 3. Newly notified TB cases and rates by prefecture, Japan, 2021

	Nov.		Summation (Jan.-Nov.)		Notification rate (per 100,000)	
	Newly notified TB	Sputum smear (+)	Newly notified TB	Sputum smear (+)	Newly notified TB	Sputum smear (+)
Total	905	303	10,386	3,561	9.0	3.1
Hokkaido	31	9	276	101	5.8	2.1
Aomori	13	6	105	43	9.3	3.8
Iwate	4	0	55	26	5.0	2.3
Miyagi	9	6	139	47	6.6	2.2
Akita	1	0	43	24	4.9	2.7
Yamagata	3	0	53	20	5.4	2.0
Fukushima	5	2	81	25	4.8	1.5
Ibaraki	17	5	188	60	7.2	2.3
Tochigi	9	3	127	50	7.2	2.8
Gunma	13	6	115	28	6.5	1.6
Saitama	49	15	563	182	8.4	2.7
Chiba	43	17	501	153	8.7	2.7
Tokyo	119	46	1,307	496	10.1	3.9
Kanagawa	64	17	677	221	8.0	2.6
Niigata	10	2	135	51	6.7	2.5
Toyama	8	0	74	24	7.8	2.5
Ishikawa	7	4	85	28	8.2	2.7
Fukui	3	2	34	10	4.8	1.4
Yamanashi	4	2	30	8	4.0	1.1
Nagano	4	2	85	29	4.5	1.5
Gifu	12	1	189	59	10.4	3.3
Shizuoka	19	6	261	89	7.8	2.7
Aichi	77	26	807	239	11.7	3.5
Mie	15	6	135	51	8.3	3.1
Shiga	7	3	109	26	8.4	2.0
Kyoto	21	5	247	83	10.5	3.5
Osaka	81	30	1,065	412	13.1	5.1
Hyogo	47	17	529	193	10.6	3.9
Nara	8	4	108	43	8.9	3.5
Wakayama	3	1	74	32	8.8	3.8
Tottori	6	1	38	12	7.5	2.4
Shimane	3	1	32	6	5.2	1.0
Okayama	12	4	149	44	8.6	2.5
Hiroshima	16	8	203	75	7.9	2.9
Yamaguchi	8	1	111	26	9.0	2.1
Tokushima	5	3	83	30	12.6	4.5
Kagawa	6	1	77	25	8.8	2.9
Ehime	10	4	106	46	8.7	3.8
Kochi	4	1	41	14	6.5	2.2
Fukuoka	45	18	496	165	10.5	3.5
Saga	8	1	70	24	9.4	3.2
Nagasaki	24	3	169	42	14.0	3.5
Kumamoto	10	0	123	38	7.7	2.4
Oita	8	3	105	48	10.2	4.7
Miyazaki	6	2	76	20	7.8	2.0
Kagoshima	15	5	148	50	10.2	3.4
Okinawa	13	4	162	43	12.0	3.2

Rate: summation / (population*11/12)*100,000

Population: as of 1st Oct. 2020

Table 4. Newly notified TB cases and rates by major city, Japan, 2021

	Nov.		Summation (Jan.-Nov.)		Notification Rate (per 100,000)	
	Newly notified TB	Sputum Smear(+)	Newly notified TB	Sputum Smear(+)	Newly notified TB	Sputum Smear(+)
Total	348	126	3,660	1,289	10.6	3.7
Sapporo City	15	6	104	45	5.7	2.5
Sendai City	2	1	78	20	7.8	2.0
Saitama City	11	3	100	30	8.2	2.5
Chiba City	6	4	86	31	9.6	3.5
Yokohama City	36	9	304	102	8.8	2.9
Kawasaki City	13	2	129	42	9.1	3.0
Sagamihara City	4	3	41	18	6.2	2.7
Niigata City	2	0	43	17	5.9	2.3
Shizuoka City	6	1	59	18	9.3	2.8
Hamamatsu City	6	3	67	19	9.2	2.6
Nagoya City	33	16	309	104	14.5	4.9
Kyoto City	18	4	155	51	11.6	3.8
Osaka City	35	13	461	170	18.3	6.7
Sakai City	7	3	109	43	14.4	5.7
Kobe City	13	4	178	68	12.7	4.9
Okayama City	7	2	75	15	11.3	2.3
Hiroshima City	5	3	73	29	6.6	2.6
Kitakyushu City	19	6	129	39	15.0	4.5
Fukuoka City	16	8	133	44	9.0	3.0
Kumamoto City	5	0	47	13	6.9	1.9
23-ku area of Tokyo	89	35	980	371	11.0	4.2

Rate: summation / (population*11/12)*100,000

Population: as of 1st Oct. 2020

Major city: city with a population of one million or more.

Table 4 is a re-count of Table 3.

Table 5. LTBI cases and rates by sex and age, Japan, 2021

	Nov.			Summation (Jan.-Nov.)			(Ratio) LTBI/Newly notified cases		
	Total	Male	Female	Total	Male	Female	Total	Male	Female
Total	378	196	182	4,484	2,263	2,221	0.4	0.4	0.5
0~4	27	13	14	242	118	124	20.2	39.3	13.8
5~9	3	2	1	32	17	15	10.7	8.5	15.0
10~14	3	1	2	25	9	16	2.5	3.0	2.3
15~19	5	4	1	46	25	21	0.5	0.6	0.4
20~24	11	8	3	176	87	89	0.4	0.4	0.5
25~29	10	4	6	206	104	102	0.5	0.4	0.5
30~34	10	2	8	177	72	105	0.6	0.5	0.7
35~39	13	8	5	188	92	96	0.7	0.7	0.8
40~44	19	11	8	211	91	120	0.9	0.8	1.0
45~49	19	9	10	274	118	156	0.8	0.6	1.2
50~54	25	12	13	330	142	188	0.8	0.6	1.2
55~59	30	11	19	285	117	168	0.8	0.5	1.6
60~64	28	13	15	290	135	155	0.7	0.5	1.3
65~69	38	23	15	368	216	152	0.7	0.5	0.9
70~74	35	24	11	519	332	187	0.6	0.5	0.7
75~79	44	22	22	449	275	174	0.4	0.4	0.5
80~84	31	19	12	333	171	162	0.2	0.2	0.3
85~89	17	8	9	230	112	118	0.1	0.1	0.2
90~	10	2	8	103	30	73	0.1	0.0	0.1

LTBI: latent TB Infection

Number of LTBI is not included in the newly notified TB patients

Table 6. LTBI cases and rates by prefecture, Japan, 2021

	Nov.	Summation (Jan.-Nov.)	
	LTBI	LTBI	(Ratio) LTBI /new TB
Total	378	4,484	0.43
Hokkaido	14	197	0.71
Aomori	3	53	0.50
Iwate	0	48	0.87
Miyagi	3	57	0.41
Akita	1	19	0.44
Yamagata	1	22	0.42
Fukushima	2	22	0.27
Ibaraki	13	115	0.61
Tochigi	3	30	0.24
Gunma	3	51	0.44
Saitama	17	228	0.40
Chiba	25	263	0.52
Tokyo	46	594	0.45
Kanagawa	21	300	0.44
Niigata	0	66	0.49
Toyama	3	52	0.70
Ishikawa	3	34	0.40
Fukui	7	22	0.65
Yamanashi	1	18	0.60
Nagano	3	45	0.53
Gifu	17	83	0.44
Shizuoka	4	82	0.31
Aichi	32	323	0.40
Mie	9	37	0.27
Shiga	7	50	0.46
Kyoto	5	116	0.47
Osaka	35	403	0.38
Hyogo	10	169	0.32
Nara	4	39	0.36
Wakayama	4	45	0.61
Tottori	0	11	0.29
Shimane	0	5	0.16
Okayama	4	45	0.30
Hiroshima	10	89	0.44
Yamaguchi	8	40	0.36
Tokushima	1	29	0.35
Kagawa	3	28	0.36
Ehime	2	21	0.20
Kochi	2	12	0.29
Fukuoka	22	254	0.51
Saga	4	43	0.61
Nagasaki	5	34	0.20
Kumamoto	5	46	0.37
Oita	3	52	0.50
Miyazaki	1	30	0.39
Kagoshima	5	69	0.47
Okinawa	7	93	0.57

LTBI: Latent TB Infection

Number of LTBI is not included in the newly notified TB patients.

Table 7. LTBI cases and rates by major city, Japan, 2021

	Nov.	Summation (Jan.-Nov.)	
	LTBI	LTBI	(Ratio) LTBI / new TB
Total	112	1,604	0.44
Sapporo City	7	101	0.97
Sendai City	0	26	0.33
Saitama City	0	25	0.25
Chiba City	5	36	0.42
Yokohama City	10	104	0.34
Kawasaki City	4	78	0.60
Sagamihara City	2	29	0.71
Niigata City	0	24	0.56
Shizuoka City	0	18	0.31
Hamamatsu City	0	22	0.33
Nagoya City	9	131	0.42
Kyoto City	4	74	0.48
Osaka City	13	194	0.42
Sakai City	5	38	0.35
Kobe City	5	58	0.33
Okayama City	1	22	0.29
Hiroshima City	5	23	0.32
Kitakyushu City	6	51	0.40
Fukuoka City	4	74	0.56
Kumamoto City	2	19	0.40
23-ku area of Tokyo	30	457	0.47

LTBI: Latent TB Infection

Number of LTBI is not included in the newly notified TB patients,

Major city: city with a population of one million or more

Table 7 is a re-count of Table 6