



Monthly Report of Tuberculosis Surveillance, Japan - February, 2022

The reporting and recording of tuberculosis (TB) and Latent TB Infection (LTBI) are managed at public health centers (PHCs) by the nationwide computerized TB surveillance system in Japan. A monthly report is compiled from the database automatically and regularly on 4th Friday of the next month, and an annual report is also produced much like the monthly report, but with sufficient time for data correction.

Tables and figures shown in the monthly reports are as follows.

Figures

Figure 1. Number of newly notified TB cases by month, Japan, 2019-2022

Figure 2. Newly notified TB cases by sex and age, Japan, summation (Jan. -Feb.) 2022

Figure 3. Notification rate of TB cases by sex and age, Japan, summation (Jan. -Feb.) 2022

Figure 4. Notification rate of TB by prefecture, Japan, summation (Jan. -Feb.) 2022

Figure 5. Notification rate of TB by major city, Japan, summation (Jan. -Feb.) 2022

Figure 6. Number of LTBI, Japan, 2019-2022

Figure 7. Number of LTBI by sex and age group, Japan, summation (Jan. -Feb.) 2022

Tables

Table 1. Newly notified TB cases and rates by sex and age, Japan, 2022

Table 2. Newly notified sputum smear positive pulmonary TB cases and rates by sex and age, Japan, 2022

Table 3. Newly notified TB cases and rates by prefecture, Japan, 2022

Table 4. Newly notified TB cases and rates by major city, Japan, 2022

Table 5. LTBI cases and rates by sex and age, Japan, 2022

Table 6. LTBI cases and rates by prefecture, Japan, 2022

Table 7. LTBI cases and rates by major city, Japan, 2022

Figure 1. Number of newly notified TB cases by month, Japan, 2019-2022

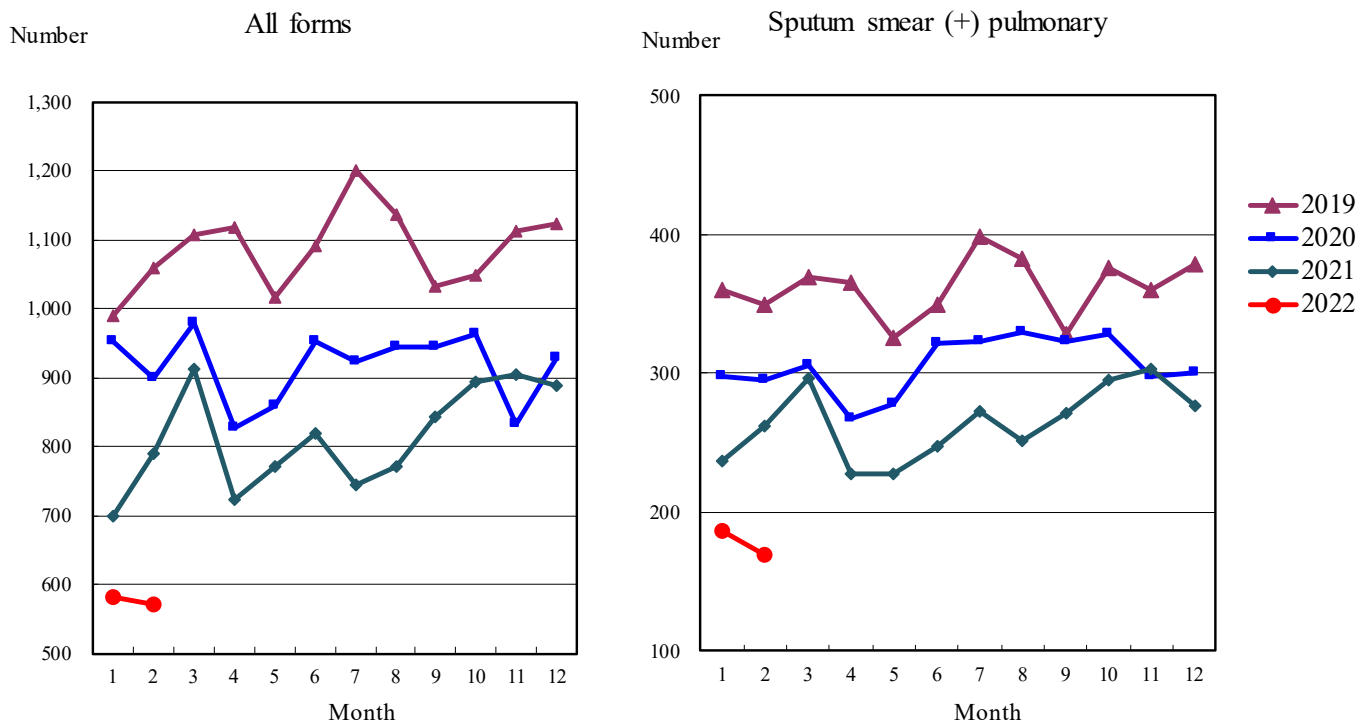


Figure 2. Newly notified TB patients by sex and age, Japan, summation (Jan.-Feb.) 2022

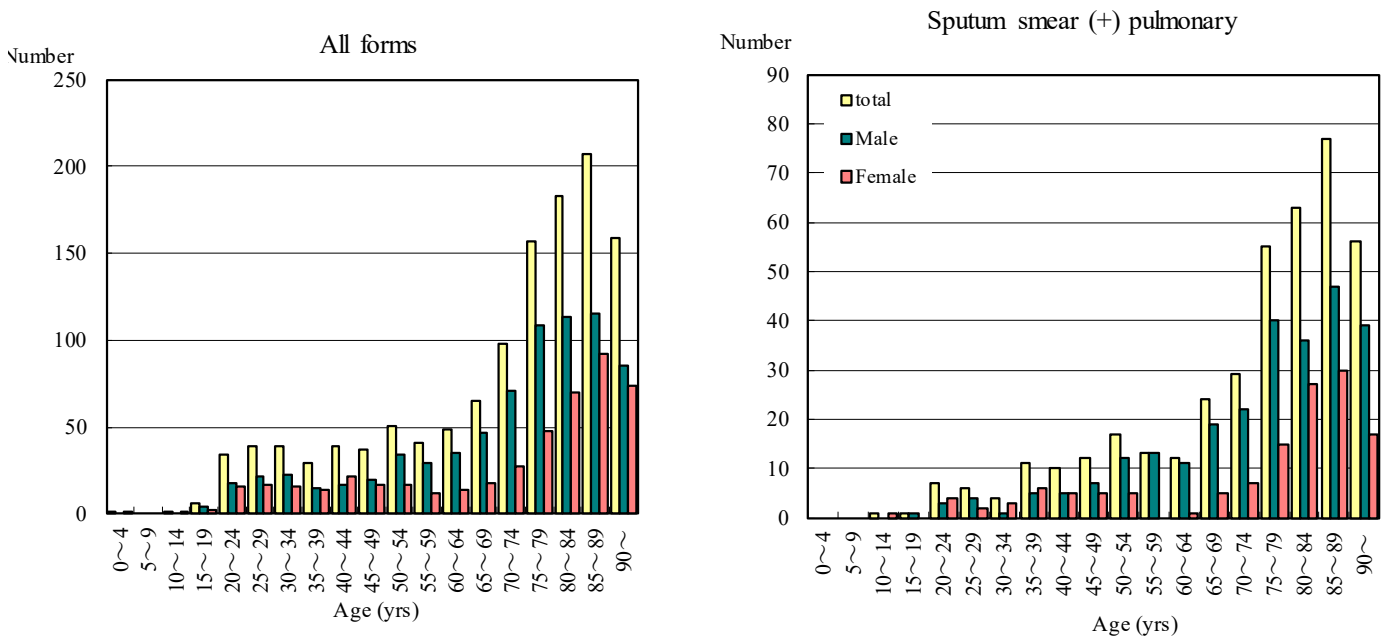


Figure 3. Notification rate of TB cases by sex and age, Japan, summation (Jan.-Feb.) 2022

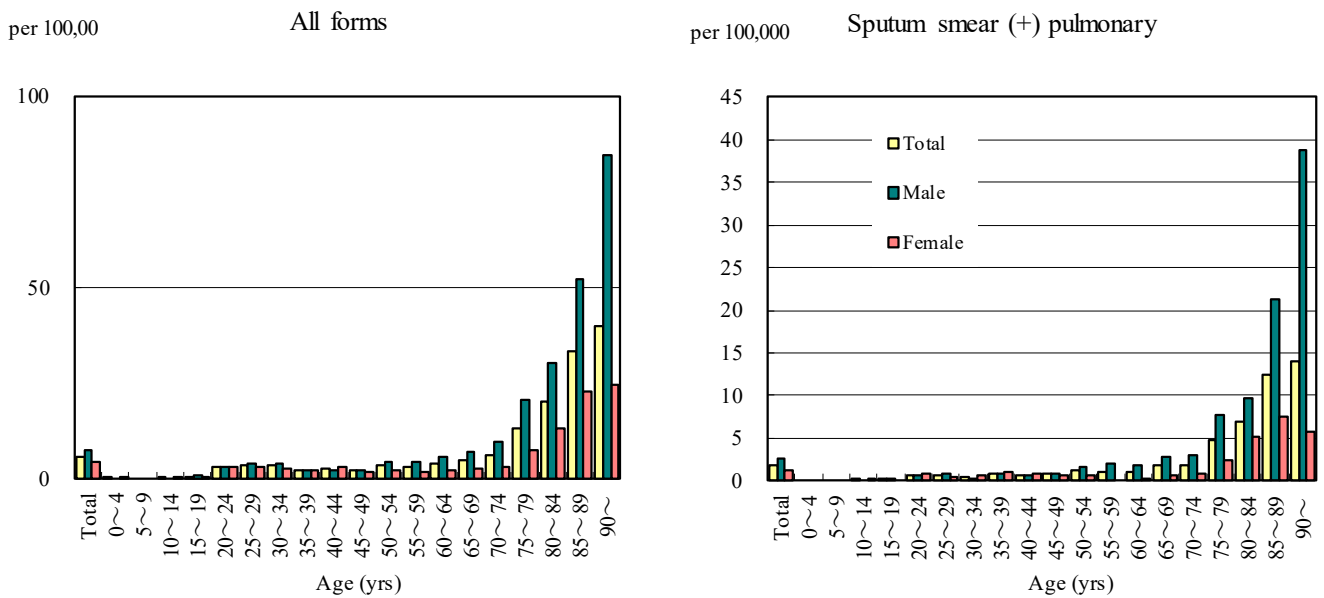


Figure 4. Notification rates of TB by prefecture, Japan, summation (Jan.-Feb.) 2022

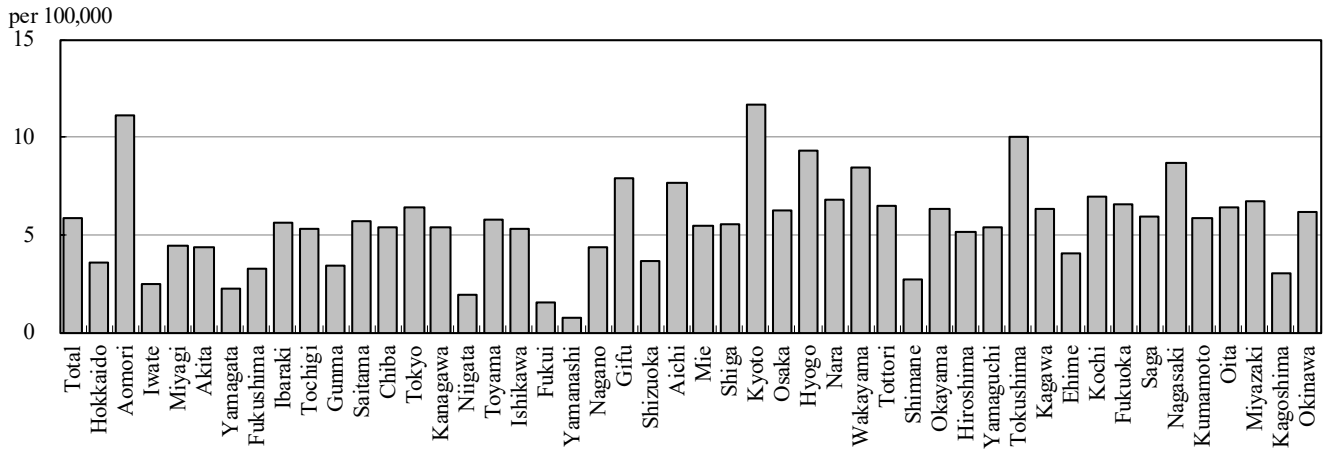


Figure 5. Notification rates of TB major city, Japan, summation (Jan.-Feb.) 2022

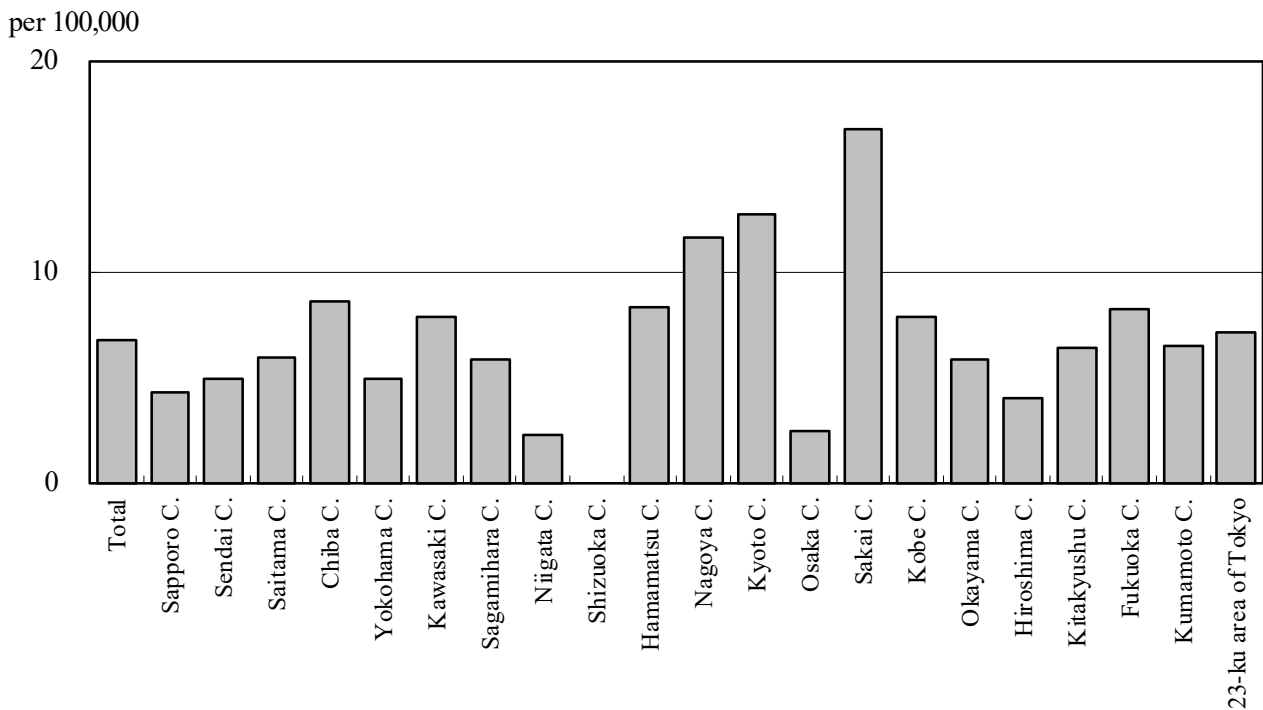


Figure 6. Number of LTBI, Japan, 2019-2022

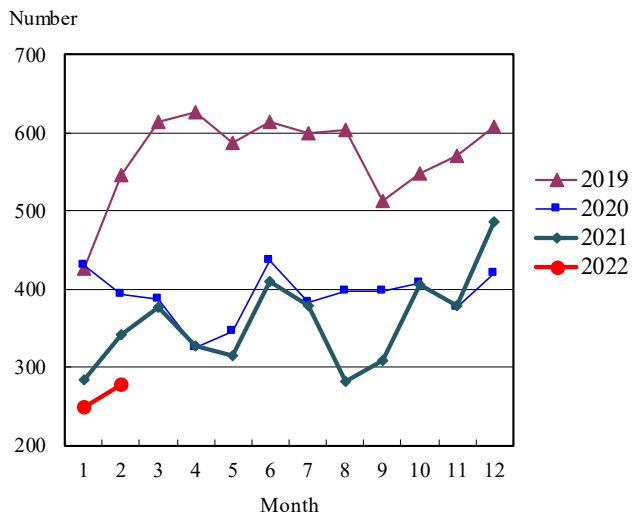


Figure 7. Number of LTBI by sex and age group, Japan, summation (Jan.-Feb.) 2022

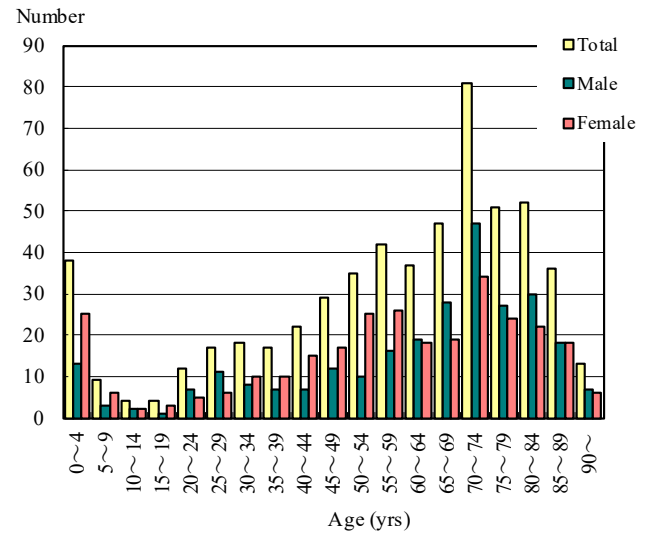


Table 1. Newly notified TB cases and rates by sex and age, Japan, 2022

	Feb.			Summation (Jan.-Feb.)			Notification rate (per 100,000)		
	Total	Male	Female	Total	Male	Female	Total	Male	Female
Total	572	356	216	1,235	757	478	5.9	7.4	4.4
0~4	0	0	0	1	0	1	0.1	0.0	0.3
5~9	0	0	0	0	0	0	0.0	0.0	0.0
10~14	0	0	0	1	0	1	0.1	0.0	0.2
15~19	2	2	0	6	4	2	0.6	0.8	0.4
20~24	13	8	5	34	18	16	3.2	3.3	3.1
25~29	17	12	5	39	22	17	3.7	4.0	3.3
30~34	20	10	10	39	23	16	3.5	4.0	2.9
35~39	16	9	7	29	15	14	2.3	2.4	2.3
40~44	18	7	11	39	17	22	2.8	2.4	3.2
45~49	14	8	6	37	20	17	2.2	2.4	2.1
50~54	21	15	6	51	34	17	3.5	4.6	2.3
55~59	22	16	6	41	29	12	3.1	4.4	1.8
60~64	27	18	9	49	35	14	4.0	5.7	2.2
65~69	37	27	10	65	47	18	4.7	7.1	2.5
70~74	46	38	8	98	71	27	6.4	9.8	3.3
75~79	74	57	17	157	109	48	13.3	20.8	7.3
80~84	81	49	32	183	113	70	20.3	30.4	13.2
85~89	75	38	37	207	115	92	33.2	52.1	22.8
90~	89	42	47	159	85	74	39.9	84.7	24.8

Temporary registrants = 42, Total of registrants and temporary registrants = 614

Rate: summation / (population*2/12)*100,000

Population: as of 1st Oct. 2020

Table 2. Newly notified sputum smear positive pulmonary TB cases and rates by sex and age, Japan, 2022

	Feb.			Summation (Jan.-Feb.)			Notification rate (per 100,000)		
	Total	Male	Female	Total	Male	Female	Total	Male	Female
Total	169	108	61	398	265	133	1.9	2.6	1.2
0~4	0	0	0	0	0	0	0.0	0.0	0.0
5~9	0	0	0	0	0	0	0.0	0.0	0.0
10~14	0	0	0	1	0	1	0.1	0.0	0.2
15~19	1	1	0	1	1	0	0.1	0.2	0.0
20~24	3	1	2	7	3	4	0.7	0.6	0.8
25~29	4	3	1	6	4	2	0.6	0.7	0.4
30~34	1	0	1	4	1	3	0.4	0.2	0.5
35~39	6	3	3	11	5	6	0.9	0.8	1.0
40~44	2	1	1	10	5	5	0.7	0.7	0.7
45~49	3	1	2	12	7	5	0.7	0.8	0.6
50~54	7	5	2	17	12	5	1.2	1.6	0.7
55~59	6	6	0	13	13	0	1.0	2.0	0.0
60~64	5	5	0	12	11	1	1.0	1.8	0.2
65~69	14	10	4	24	19	5	1.7	2.9	0.7
70~74	14	10	4	29	22	7	1.9	3.0	0.9
75~79	23	18	5	55	40	15	4.7	7.6	2.3
80~84	25	13	12	63	36	27	7.0	9.7	5.1
85~89	24	12	12	77	47	30	12.3	21.3	7.4
90~	31	19	12	56	39	17	14.1	38.8	5.7

Rate: summation / (population*2/12)*100,000

Population: as of 1st Oct. 2020

Table 3. Newly notified TB cases and rates by prefecture, Japan, 2022

	Feb.		Summation (Jan.-Feb.)		Notification rate (per 100,000)	
	Newly notified TB	Sputum smear (+)	Newly notified TB	Sputum smear (+)	Newly notified TB	Sputum smear (+)
Total	572	169	1,235	398	5.9	1.9
Hokkaido	11	4	31	13	3.6	1.5
Aomori	12	6	23	10	11.1	4.8
Iwate	4	0	5	1	2.5	0.5
Miyagi	6	1	17	6	4.4	1.6
Akita	5	3	7	3	4.4	1.9
Yamagata	3	1	4	2	2.2	1.1
Fukushima	7	0	10	1	3.3	0.3
Ibaraki	11	3	27	10	5.7	2.1
Tochigi	8	0	17	3	5.3	0.9
Gunma	7	4	11	4	3.4	1.2
Saitama	26	7	70	23	5.7	1.9
Chiba	25	3	56	9	5.3	0.9
Tokyo	71	17	150	47	6.4	2.0
Kanagawa	37	11	83	25	5.4	1.6
Niigata	3	2	7	3	1.9	0.8
Toyama	5	2	10	4	5.8	2.3
Ishikawa	5	2	10	5	5.3	2.6
Fukui	0	0	2	1	1.6	0.8
Yamanashi	1	0	1	0	0.7	0.0
Nagano	9	1	15	2	4.4	0.6
Gifu	15	5	26	9	7.9	2.7
Shizuoka	10	2	22	6	3.6	1.0
Aichi	43	11	96	36	7.6	2.9
Mie	9	4	16	8	5.4	2.7
Shiga	5	3	13	4	5.5	1.7
Kyoto	24	6	50	9	11.6	2.1
Osaka	40	14	92	37	6.2	2.5
Hyogo	47	15	85	30	9.3	3.3
Nara	8	5	15	6	6.8	2.7
Wakayama	10	3	13	4	8.5	2.6
Tottori	3	1	6	1	6.5	1.1
Shimane	1	0	3	0	2.7	0.0
Okayama	4	0	20	3	6.4	1.0
Hiroshima	11	3	24	10	5.1	2.1
Yamaguchi	8	0	12	1	5.4	0.4
Tokushima	6	3	12	4	10.0	3.3
Kagawa	5	2	10	3	6.3	1.9
Ehime	5	4	9	6	4.0	2.7
Kochi	0	0	8	2	6.9	1.7
Fukuoka	16	8	56	19	6.5	2.2
Saga	3	1	8	1	5.9	0.7
Nagasaki	10	3	19	5	8.7	2.3
Kumamoto	10	0	17	5	5.9	1.7
Oita	6	3	12	6	6.4	3.2
Miyazaki	3	1	12	3	6.7	1.7
Kagoshima	4	1	8	3	3.0	1.1
Okinawa	10	4	15	5	6.1	2.0

Rate: summation / (population*2/12)*100,000

Population: as of 1st Oct. 2020

Table 4. Newly notified TB cases and rates by major city, Japan, 2022

	Feb.		Summation (Jan.-Feb.)		Notification Rate (per 100,000)	
	Newly notified TB	Sputum Smear(+)	Newly notified TB	Sputum Smear(+)	Newly notified TB	Sputum Smear(+)
Total	185	53	423	141	6.8	2.3
Sapporo City	4	2	14	6	4.3	1.8
Sendai City	3	1	9	4	4.9	2.2
Saitama City	3	0	13	3	5.9	1.4
Chiba City	8	0	14	2	8.6	1.2
Yokohama City	14	4	31	11	4.9	1.7
Kawasaki City	12	3	20	5	7.8	2.0
Sagamihara City	2	1	7	2	5.8	1.7
Niigata City	0	0	3	0	2.3	0.0
Shizuoka City	0	0	0	0	0.0	0.0
Hamamatsu City	6	1	11	3	8.3	2.3
Nagoya City	19	8	45	22	11.6	5.7
Kyoto City	16	4	31	5	12.7	2.0
Osaka City	0	0	11	3	2.4	0.7
Sakai City	12	6	23	13	16.7	9.4
Kobe City	14	5	20	9	7.9	3.5
Okayama City	1	0	7	0	5.8	0.0
Hiroshima City	4	2	8	4	4.0	2.0
Kitakyushu City	0	0	10	2	6.4	1.3
Fukuoka City	8	3	22	7	8.2	2.6
Kumamoto City	2	0	8	4	6.5	3.2
23-ku area of Tokyo	57	13	116	36	7.2	2.2

Rate: summation / (population*2/12)*100,000

Population: as of 1st Oct. 2020

Major city: city with a population of one million or more.

Table 4 is a re-count of Table 3.

Table 5. LTBI cases and rates by sex and age, Japan, 2022

	Feb.			Summation (Jan.-Feb.)			(Ratio) LTBI/Newly notified cases		
	Total	Male	Female	Total	Male	Female	Total	Male	Female
Total	277	131	146	564	273	291	0.5	0.4	0.6
0~4	24	9	15	38	13	25	38.0	-	25.0
5~9	6	2	4	9	3	6	-	-	-
10~14	2	1	1	4	2	2	4.0	-	2.0
15~19	1	0	1	4	1	3	0.7	0.3	1.5
20~24	3	2	1	12	7	5	0.4	0.4	0.3
25~29	7	4	3	17	11	6	0.4	0.5	0.4
30~34	7	4	3	18	8	10	0.5	0.3	0.6
35~39	6	2	4	17	7	10	0.6	0.5	0.7
40~44	7	1	6	22	7	15	0.6	0.4	0.7
45~49	12	4	8	29	12	17	0.8	0.6	1.0
50~54	22	7	15	35	10	25	0.7	0.3	1.5
55~59	21	9	12	42	16	26	1.0	0.6	2.2
60~64	20	9	11	37	19	18	0.8	0.5	1.3
65~69	23	14	9	47	28	19	0.7	0.6	1.1
70~74	38	24	14	81	47	34	0.8	0.7	1.3
75~79	30	14	16	51	27	24	0.3	0.2	0.5
80~84	23	11	12	52	30	22	0.3	0.3	0.3
85~89	20	10	10	36	18	18	0.2	0.2	0.2
90~	5	4	1	13	7	6	0.1	0.1	0.1

LTBI: latent TB Infection

Number of LTBI is not included in the newly notified TB patients

Table 6. LTBI cases and rates by prefecture, Japan, 2022

	Feb.	Summation (Jan.-Feb.)	
	LTBI	LTBI	(Ratio) LTBI /new TB
Total	277	564	0.46
Hokkaido	10	22	0.71
Aomori	3	9	0.39
Iwate	2	5	1.00
Miyagi	2	5	0.29
Akita	0	1	0.14
Yamagata	2	2	0.50
Fukushima	0	6	0.60
Ibaraki	11	17	0.63
Tochigi	1	3	0.18
Gunma	2	2	0.18
Saitama	17	44	0.63
Chiba	24	39	0.70
Tokyo	53	96	0.64
Kanagawa	19	32	0.39
Niigata	3	6	0.86
Toyama	2	3	0.30
Ishikawa	0	1	0.10
Fukui	0	1	0.50
Yamanashi	0	0	0.00
Nagano	6	10	0.67
Gifu	3	5	0.19
Shizuoka	3	6	0.27
Aichi	15	37	0.39
Mie	2	5	0.31
Shiga	2	3	0.23
Kyoto	10	15	0.30
Osaka	12	35	0.38
Hyogo	14	31	0.36
Nara	1	1	0.07
Wakayama	1	4	0.31
Tottori	1	3	0.50
Shimane	2	2	0.67
Okayama	4	11	0.55
Hiroshima	7	12	0.50
Yamaguchi	2	7	0.58
Tokushima	1	3	0.25
Kagawa	1	7	0.70
Ehime	0	3	0.33
Kochi	1	2	0.25
Fukuoka	17	32	0.57
Saga	0	1	0.13
Nagasaki	0	2	0.11
Kumamoto	2	7	0.41
Oita	2	4	0.33
Miyazaki	1	2	0.17
Kagoshima	5	7	0.88
Okinawa	11	13	0.87

LTBI: Latent TB Infection

Number of LTBI is not included in the newly notified TB patients.

Table 7. LTBI cases and rates by major city, Japan, 2022

	Feb.	Summation (Jan.-Feb.)	
	LTBI	LTBI	(Ratio) LTBI / new TB
Total	101	198	0.47
Sapporo City	8	13	0.93
Sendai City	2	5	0.56
Saitama City	2	4	0.31
Chiba City	5	5	0.36
Yokohama City	10	13	0.42
Kawasaki City	6	10	0.50
Sagamihara City	1	3	0.43
Niigata City	0	1	0.33
Shizuoka City	0	0	-
Hamamatsu City	1	1	0.09
Nagoya City	10	22	0.49
Kyoto City	6	11	0.35
Osaka City	0	3	0.27
Sakai City	1	5	0.22
Kobe City	5	9	0.45
Okayama City	3	6	0.86
Hiroshima City	1	3	0.38
Kitakyushu City	1	6	0.60
Fukuoka City	4	11	0.50
Kumamoto City	1	3	0.38
23-ku area of Tokyo	34	64	0.55

LTBI: Latent TB Infection

Number of LTBI is not included in the newly notified TB patients,

Major city: city with a population of one million or more

Table 7 is a re-count of Table 6