



Monthly Report of Tuberculosis Surveillance, Japan - May, 2022

The reporting and recording of tuberculosis (TB) and Latent TB Infection (LTBI) are managed at public health centers (PHCs) by the nationwide computerized TB surveillance system in Japan. A monthly report is compiled from the database automatically and regularly on 4th Friday of the next month, and an annual report is also produced much like the monthly report, but with sufficient time for data correction.

Tables and figures shown in the monthly reports are as follows.

Figures

Figure 1. Number of newly notified TB cases by month, Japan, 2019-2022

Figure 2. Newly notified TB cases by sex and age, Japan, summation (Jan. -May.) 2022

Figure 3. Notification rate of TB cases by sex and age, Japan, summation (Jan. -May.) 2022

Figure 4. Notification rate of TB by prefecture, Japan, summation (Jan. -May.) 2022

Figure 5. Notification rate of TB by major city, Japan, summation (Jan. -May.) 2022

Figure 6. Number of LTBI, Japan, 2019-2022

Figure 7. Number of LTBI by sex and age group, Japan, summation (Jan. -May.) 2022

Tables

Table 1. Newly notified TB cases and rates by sex and age, Japan, 2022

Table 2. Newly notified sputum smear positive pulmonary TB cases and rates by sex and age, Japan, 2022

Table 3. Newly notified TB cases and rates by prefecture, Japan, 2022

Table 4. Newly notified TB cases and rates by major city, Japan, 2022

Table 5. LTBI cases and rates by sex and age, Japan, 2022

Table 6. LTBI cases and rates by prefecture, Japan, 2022

Table 7. LTBI cases and rates by major city, Japan, 2022

Figure 1. Number of newly notified TB cases by month, Japan, 2019-2022

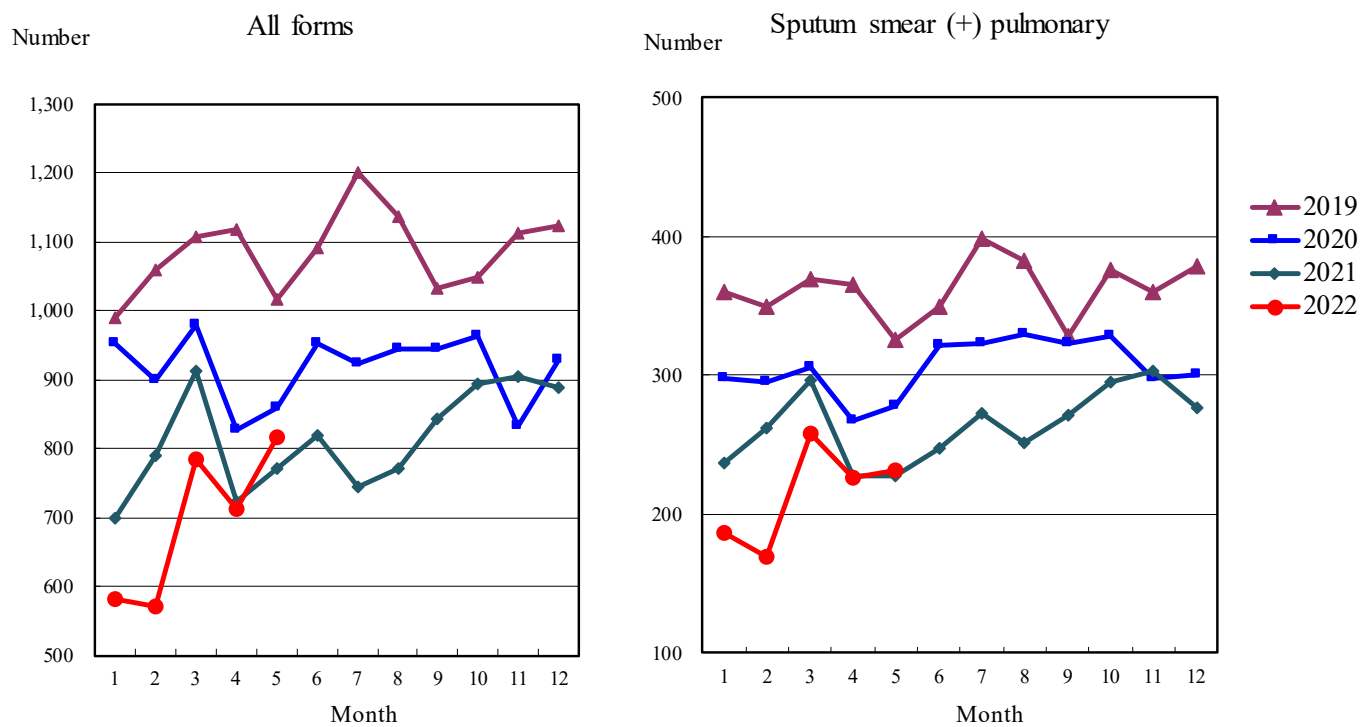


Figure 2. Newly notified TB patients by sex and age, Japan, summation (Jan.-May.) 2022

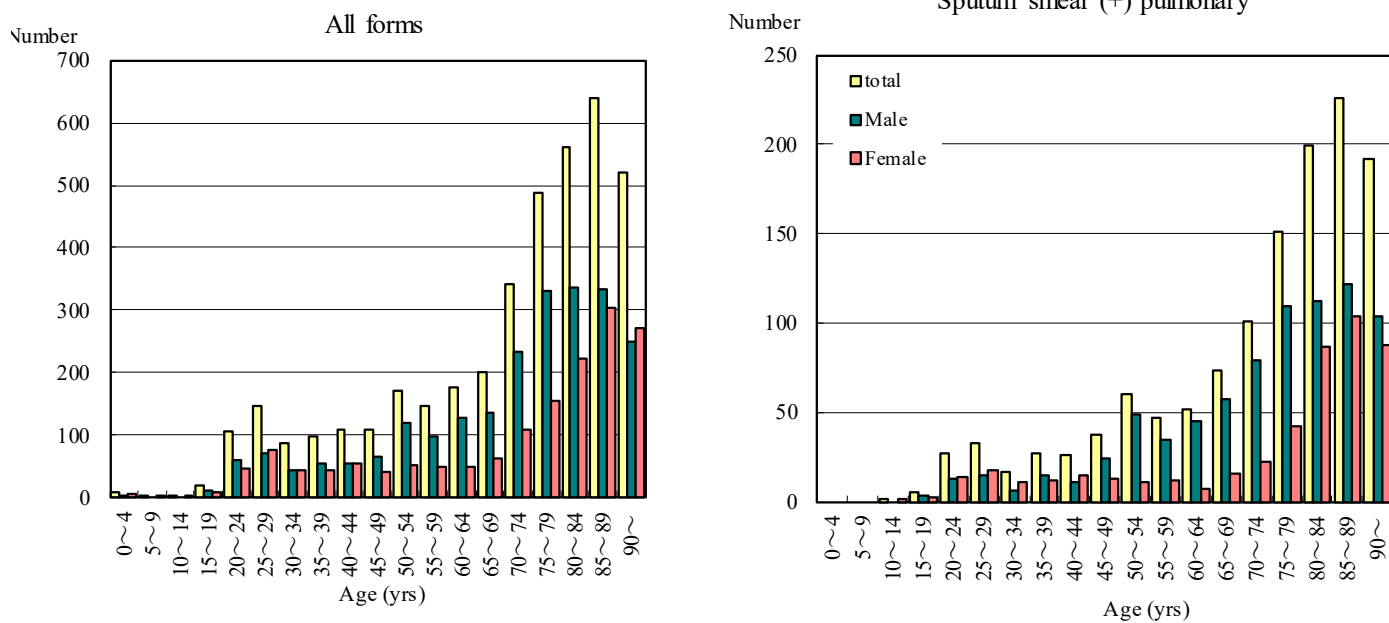


Figure 3. Notification rate of TB cases by sex and age, Japan, summation (Jan.-May.) 2022

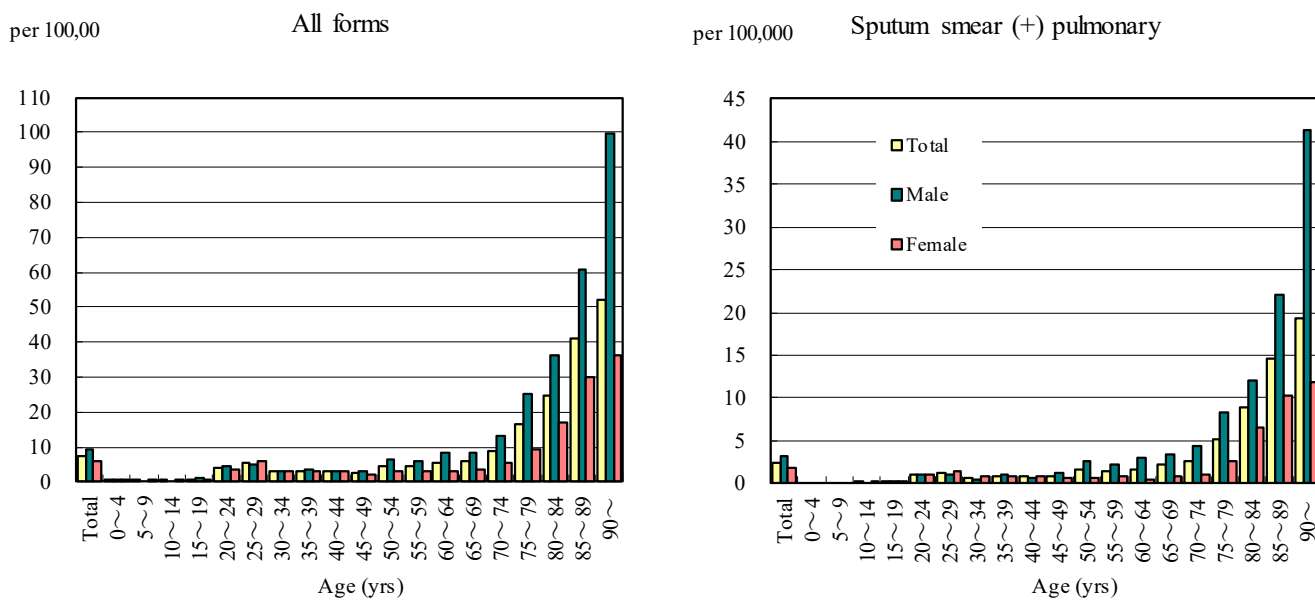


Figure 4. Notification rates of TB by prefecture, Japan, summation (Jan.-May.) 2022

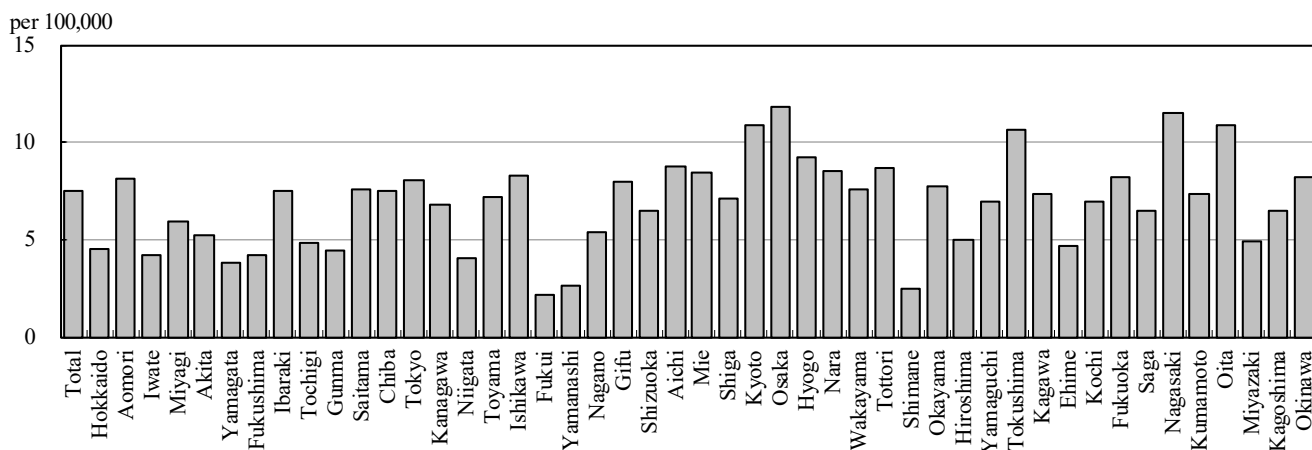


Figure 5. Notification rates of TB major city, Japan, summation (Jan.-May.) 2022

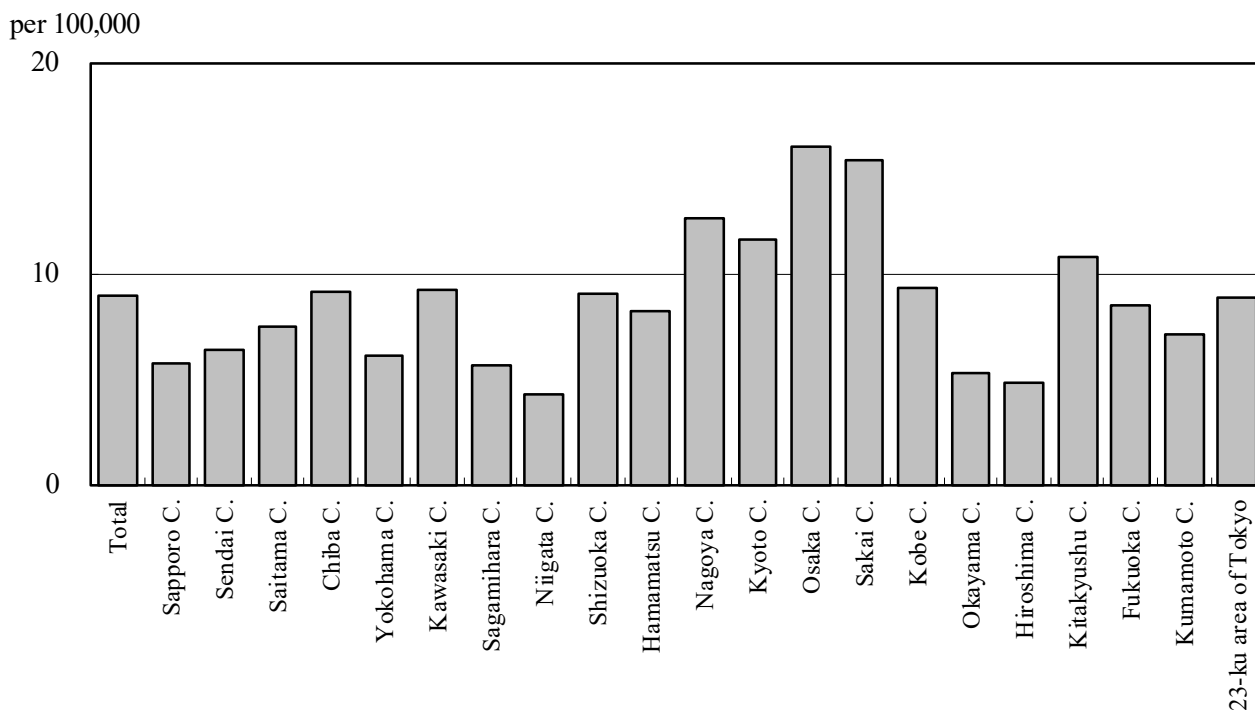


Figure 6. Number of LTBI, Japan, 2019-2022

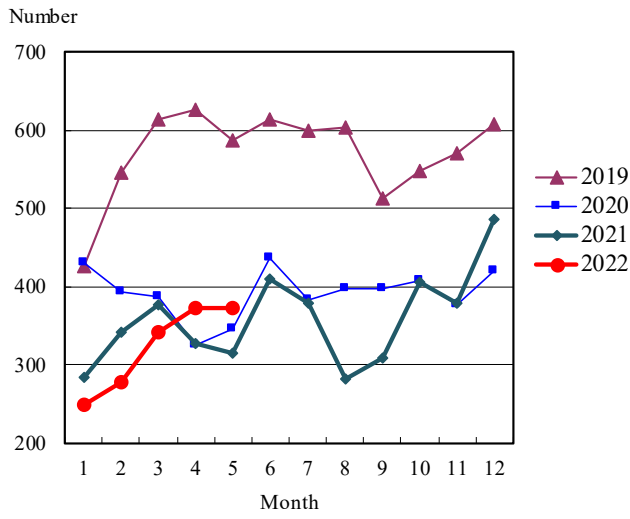


Figure 7. Number of LTBI by sex and age group, Japan, summation (Jan.-May.) 2022

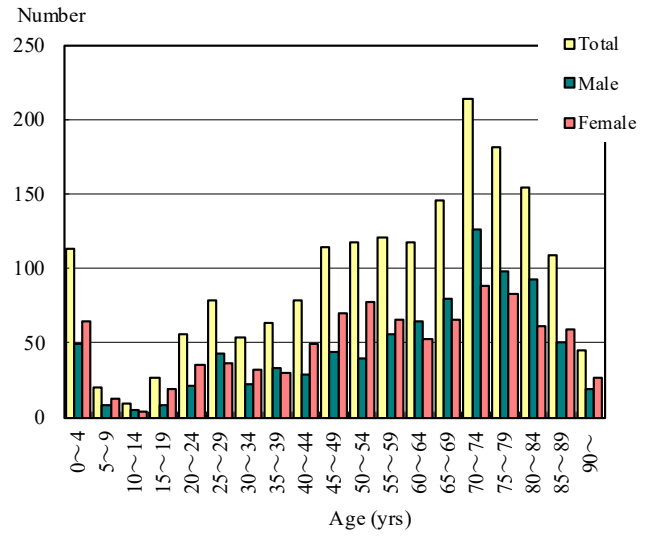


Table 1. Newly notified TB cases and rates by sex and age, Japan, 2022

	May.			Summation (Jan.-May.)			Notification rate (per 100,000)		
	Total	Male	Female	Total	Male	Female	Total	Male	Female
Total	817	473	344	3,933	2,335	1,598	7.5	9.1	5.9
0~4	3	0	3	8	1	7	0.4	0.1	0.8
5~9	2	0	2	2	0	2	0.1	0.0	0.2
10~14	1	0	1	2	0	2	0.1	0.0	0.2
15~19	4	2	2	19	11	8	0.8	0.9	0.7
20~24	28	16	12	107	61	46	4.1	4.5	3.6
25~29	34	15	19	146	70	76	5.5	5.1	5.9
30~34	16	6	10	88	45	43	3.1	3.1	3.1
35~39	22	12	10	98	54	44	3.1	3.4	2.9
40~44	21	14	7	109	55	54	3.1	3.1	3.1
45~49	18	12	6	109	67	42	2.7	3.2	2.1
50~54	32	22	10	171	120	51	4.7	6.6	2.8
55~59	24	15	9	148	99	49	4.5	6.0	3.0
60~64	38	23	15	176	127	49	5.7	8.3	3.1
65~69	31	21	10	200	137	63	5.8	8.2	3.6
70~74	83	51	32	343	234	109	9.0	12.9	5.4
75~79	112	76	36	487	332	155	16.5	25.3	9.5
80~84	115	64	51	560	337	223	24.9	36.2	16.9
85~89	132	68	64	639	335	304	41.0	60.7	30.2
90~	101	56	45	521	250	271	52.3	99.6	36.4

Temporary registrants = 55, Total of registrants and temporary registrants = 872

Rate: summation / (population*5/12)*100,000

Population: as of 1st Oct. 2020

Table 2. Newly notified sputum smear positive pulmonary TB cases and rates by sex and age, Japan, 2022

	May.			Summation (Jan.-May.)			Notification rate (per 100,000)		
	Total	Male	Female	Total	Male	Female	Total	Male	Female
Total	232	139	93	1,274	799	475	2.4	3.1	1.8
0~4	0	0	0	0	0	0	0.0	0.0	0.0
5~9	0	0	0	0	0	0	0.0	0.0	0.0
10~14	0	0	0	1	0	1	0.0	0.0	0.1
15~19	2	1	1	5	3	2	0.2	0.2	0.2
20~24	8	4	4	27	13	14	1.0	1.0	1.1
25~29	9	2	7	33	15	18	1.2	1.1	1.4
30~34	6	3	3	17	6	11	0.6	0.4	0.8
35~39	6	5	1	27	15	12	0.9	0.9	0.8
40~44	3	1	2	26	11	15	0.7	0.6	0.9
45~49	4	3	1	37	24	13	0.9	1.2	0.6
50~54	13	10	3	60	49	11	1.6	2.7	0.6
55~59	3	2	1	47	35	12	1.4	2.1	0.7
60~64	8	6	2	52	45	7	1.7	2.9	0.4
65~69	8	7	1	73	57	16	2.1	3.4	0.9
70~74	17	8	9	101	79	22	2.6	4.4	1.1
75~79	33	23	10	151	109	42	5.1	8.3	2.6
80~84	40	25	15	199	112	87	8.8	12.0	6.6
85~89	41	21	20	226	122	104	14.5	22.1	10.3
90~	31	18	13	192	104	88	19.3	41.4	11.8

Rate: summation / (population*5/12)*100,000

Population: as of 1st Oct. 2020

Table 3. Newly notified TB cases and rates by prefecture, Japan, 2022

	May.		Summation (Jan.-May.)		Notification rate (per 100,000)	
	Newly notified TB	Sputum smear (+)	Newly notified TB	Sputum smear (+)	Newly notified TB	Sputum smear (+)
Total	817	232	3,933	1,274	7.5	2.4
Hokkaido	20	4	98	29	4.5	1.3
Aomori	9	2	42	13	8.1	2.5
Iwate	5	1	21	7	4.2	1.4
Miyagi	16	6	57	28	5.9	2.9
Akita	7	1	21	6	5.3	1.5
Yamagata	1	0	17	5	3.8	1.1
Fukushima	5	2	32	11	4.2	1.4
Ibaraki	14	0	90	29	7.5	2.4
Tochigi	2	1	39	21	4.8	2.6
Gunma	8	4	36	14	4.5	1.7
Saitama	46	20	233	85	7.6	2.8
Chiba	43	15	197	55	7.5	2.1
Tokyo	110	30	469	160	8.0	2.7
Kanagawa	42	12	260	82	6.8	2.1
Niigata	5	0	37	12	4.0	1.3
Toyama	4	1	31	12	7.2	2.8
Ishikawa	7	2	39	12	8.3	2.5
Fukui	1	0	7	2	2.2	0.6
Yamanashi	2	0	9	1	2.7	0.3
Nagano	12	5	46	12	5.4	1.4
Gifu	11	3	66	19	8.0	2.3
Shizuoka	26	4	98	30	6.5	2.0
Aichi	60	16	274	79	8.7	2.5
Mie	15	4	62	23	8.4	3.1
Shiga	9	2	42	10	7.1	1.7
Kyoto	20	6	117	32	10.9	3.0
Osaka	96	32	435	156	11.8	4.2
Hyogo	43	17	210	78	9.2	3.4
Nara	7	0	47	13	8.5	2.4
Wakayama	5	1	29	7	7.5	1.8
Tottori	4	2	20	5	8.7	2.2
Shimane	1	0	7	1	2.5	0.4
Okayama	14	4	61	15	7.8	1.9
Hiroshima	15	2	58	22	5.0	1.9
Yamaguchi	9	3	39	10	7.0	1.8
Tokushima	6	1	32	5	10.7	1.7
Kagawa	7	2	29	10	7.3	2.5
Ehime	6	2	26	13	4.7	2.3
Kochi	0	0	20	7	6.9	2.4
Fukuoka	36	6	176	49	8.2	2.3
Saga	4	1	22	5	6.5	1.5
Nagasaki	15	1	63	14	11.5	2.6
Kumamoto	16	7	53	17	7.3	2.3
Oita	15	6	51	19	10.9	4.1
Miyazaki	2	0	22	7	4.9	1.6
Kagoshima	7	4	43	16	6.5	2.4
Okinawa	9	0	50	16	8.2	2.6

Rate: summation / (population*5/12)*100,000

Population: as of 1st Oct. 2020

Table 4. Newly notified TB cases and rates by major city, Japan, 2022

	May.		Summation (Jan.-May.)		Notification Rate (per 100,000)	
	Newly notified TB	Sputum Smear(+)	Newly notified TB	Sputum Smear(+)	Newly notified TB	Sputum Smear(+)
Total	287	81	1,403	469	9.0	3.0
Sapporo City	12	2	47	15	5.7	1.8
Sendai City	8	3	29	14	6.3	3.1
Saitama City	4	1	41	12	7.4	2.2
Chiba City	9	4	37	11	9.1	2.7
Yokohama City	16	7	96	35	6.1	2.2
Kawasaki City	10	2	59	18	9.2	2.8
Sagamihara City	2	1	17	7	5.6	2.3
Niigata City	0	0	14	5	4.3	1.5
Shizuoka City	3	1	26	10	9.0	3.5
Hamamatsu City	11	2	27	6	8.2	1.8
Nagoya City	27	8	123	41	12.7	4.2
Kyoto City	9	5	71	24	11.6	3.9
Osaka City	42	9	184	59	16.0	5.1
Sakai City	7	2	53	24	15.4	7.0
Kobe City	16	3	59	18	9.3	2.8
Okayama City	1	1	16	4	5.3	1.3
Hiroshima City	8	1	24	8	4.8	1.6
Kitakyushu City	6	1	42	9	10.7	2.3
Fukuoka City	10	2	57	17	8.5	2.5
Kumamoto City	8	3	22	8	7.1	2.6
23-ku area of Tokyo	78	23	359	124	8.9	3.1

Rate: summation / (population*5/12)*100,000

Population: as of 1st Oct. 2020

Major city: city with a population of one million or more.

Table 4 is a re-count of Table 3.

Table 5. LTBI cases and rates by sex and age, Japan, 2022

	May.			Summation (Jan.-May.)			(Ratio) LTBI/Newly notified cases		
	Total	Male	Female	Total	Male	Female	Total	Male	Female
Total	373	189	184	1,817	888	929	0.5	0.4	0.6
0~4	18	8	10	113	49	64	14.1	49.0	9.1
5~9	4	2	2	20	8	12	10.0	-	6.0
10~14	3	2	1	9	5	4	4.5	-	2.0
15~19	9	3	6	27	8	19	1.4	0.7	2.4
20~24	20	5	15	56	21	35	0.5	0.3	0.8
25~29	15	5	10	79	43	36	0.5	0.6	0.5
30~34	9	1	8	54	22	32	0.6	0.5	0.7
35~39	14	7	7	63	33	30	0.6	0.6	0.7
40~44	11	3	8	78	29	49	0.7	0.5	0.9
45~49	24	10	14	114	44	70	1.0	0.7	1.7
50~54	21	16	5	117	40	77	0.7	0.3	1.5
55~59	29	16	13	121	56	65	0.8	0.6	1.3
60~64	18	11	7	117	64	53	0.7	0.5	1.1
65~69	24	11	13	146	80	66	0.7	0.6	1.0
70~74	39	23	16	214	126	88	0.6	0.5	0.8
75~79	42	25	17	181	98	83	0.4	0.3	0.5
80~84	31	23	8	154	93	61	0.3	0.3	0.3
85~89	34	15	19	109	50	59	0.2	0.1	0.2
90~	8	3	5	45	19	26	0.1	0.1	0.1

LTBI: latent TB Infection

Number of LTBI is not included in the newly notified TB patients

Table 6. LTBI cases and rates by prefecture, Japan, 2022

	May.	Summation (Jan.-May.)	
	LTBI	LTBI	(Ratio) LTBI /new TB
Total	373	1,817	0.46
Hokkaido	19	78	0.80
Aomori	1	16	0.38
Iwate	6	19	0.90
Miyagi	4	19	0.33
Akita	2	7	0.33
Yamagata	3	8	0.47
Fukushima	0	13	0.41
Ibaraki	7	53	0.59
Tochigi	0	7	0.18
Gunma	3	16	0.44
Saitama	29	111	0.48
Chiba	22	115	0.58
Tokyo	52	248	0.53
Kanagawa	25	119	0.46
Niigata	4	25	0.68
Toyama	2	11	0.35
Ishikawa	6	17	0.44
Fukui	0	2	0.29
Yamanashi	2	4	0.44
Nagano	7	24	0.52
Gifu	5	32	0.48
Shizuoka	9	29	0.30
Aichi	21	126	0.46
Mie	3	10	0.16
Shiga	1	9	0.21
Kyoto	9	40	0.34
Osaka	43	185	0.43
Hyogo	17	88	0.42
Nara	3	11	0.23
Wakayama	2	8	0.28
Tottori	0	10	0.50
Shimane	0	2	0.29
Okayama	3	25	0.41
Hiroshima	5	32	0.55
Yamaguchi	5	20	0.51
Tokushima	1	5	0.16
Kagawa	4	15	0.52
Ehime	0	4	0.15
Kochi	0	5	0.25
Fukuoka	30	119	0.68
Saga	2	8	0.36
Nagasaki	1	12	0.19
Kumamoto	3	22	0.42
Oita	2	13	0.25
Miyazaki	1	5	0.23
Kagoshima	4	24	0.56
Okinawa	5	46	0.92

LTBI: Latent TB Infection

Number of LTBI is not included in the newly notified TB patients.

Table 7. LTBI cases and rates by major city, Japan, 2022

	May.	Summation (Jan.-May.)	
	LTBI	LTBI	(Ratio) LTBI / new TB
Total	140	670	0.48
Sapporo City	7	35	0.74
Sendai City	1	11	0.38
Saitama City	6	12	0.29
Chiba City	4	26	0.70
Yokohama City	13	50	0.52
Kawasaki City	4	30	0.51
Sagamihara City	2	6	0.35
Niigata City	0	5	0.36
Shizuoka City	0	7	0.27
Hamamatsu City	4	7	0.26
Nagoya City	8	61	0.50
Kyoto City	7	26	0.37
Osaka City	22	88	0.48
Sakai City	5	16	0.30
Kobe City	9	28	0.47
Okayama City	0	11	0.69
Hiroshima City	0	10	0.42
Kitakyushu City	5	28	0.67
Fukuoka City	10	37	0.65
Kumamoto City	1	7	0.32
23-ku area of Tokyo	32	169	0.47

LTBI: Latent TB Infection

Number of LTBI is not included in the newly notified TB patients,

Major city: city with a population of one million or more

Table 7 is a re-count of Table 6