



## Monthly Report of Tuberculosis Surveillance, Japan - June, 2022

The reporting and recording of tuberculosis (TB) and Latent TB Infection (LTBI) are managed at public health centers (PHCs) by the nationwide computerized TB surveillance system in Japan. A monthly report is compiled from the database automatically and regularly on 4<sup>th</sup> Friday of the next month, and an annual report is also produced much like the monthly report, but with sufficient time for data correction.

Tables and figures shown in the monthly reports are as follows.

### Figures

Figure 1. Number of newly notified TB cases by month, Japan, 2019-2022

Figure 2. Newly notified TB cases by sex and age, Japan, summation (Jan. -Jun.) 2022

Figure 3. Notification rate of TB cases by sex and age, Japan, summation (Jan. -Jun.) 2022

Figure 4. Notification rate of TB by prefecture, Japan, summation (Jan. -Jun.) 2022

Figure 5. Notification rate of TB by major city, Japan, summation (Jan. -Jun.) 2022

Figure 6. Number of LTBI, Japan, 2019-2022

Figure 7. Number of LTBI by sex and age group, Japan, summation (Jan. -Jun.) 2022

### Tables

Table 1. Newly notified TB cases and rates by sex and age, Japan, 2022

Table 2. Newly notified sputum smear positive pulmonary TB cases and rates by sex and age, Japan, 2022

Table 3. Newly notified TB cases and rates by prefecture, Japan, 2022

Table 4. Newly notified TB cases and rates by major city, Japan, 2022

Table 5. LTBI cases and rates by sex and age, Japan, 2022

Table 6. LTBI cases and rates by prefecture, Japan, 2022

Table 7. LTBI cases and rates by major city, Japan, 2022

Figure 1. Number of newly notified TB cases by month, Japan, 2019-2022

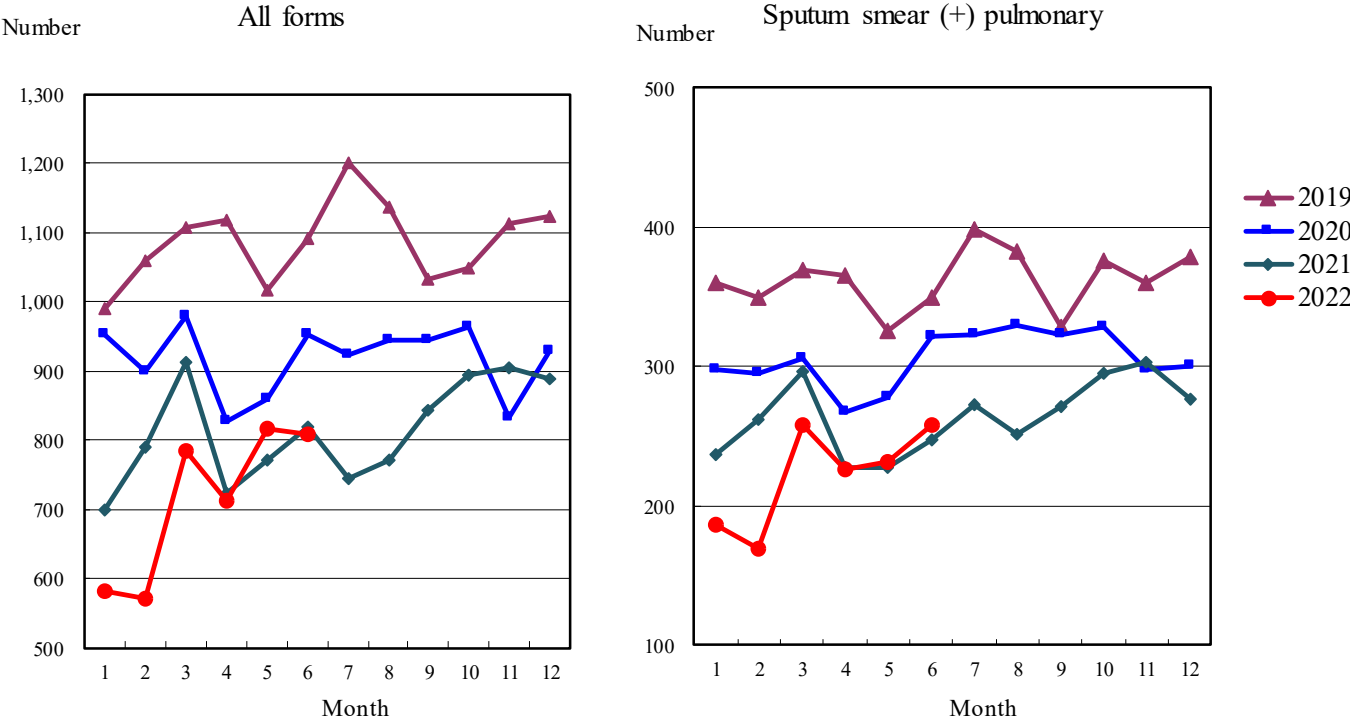


Figure 2. Newly notified TB patients by sex and age, Japan, summation (Jan.-Jun.) 2022

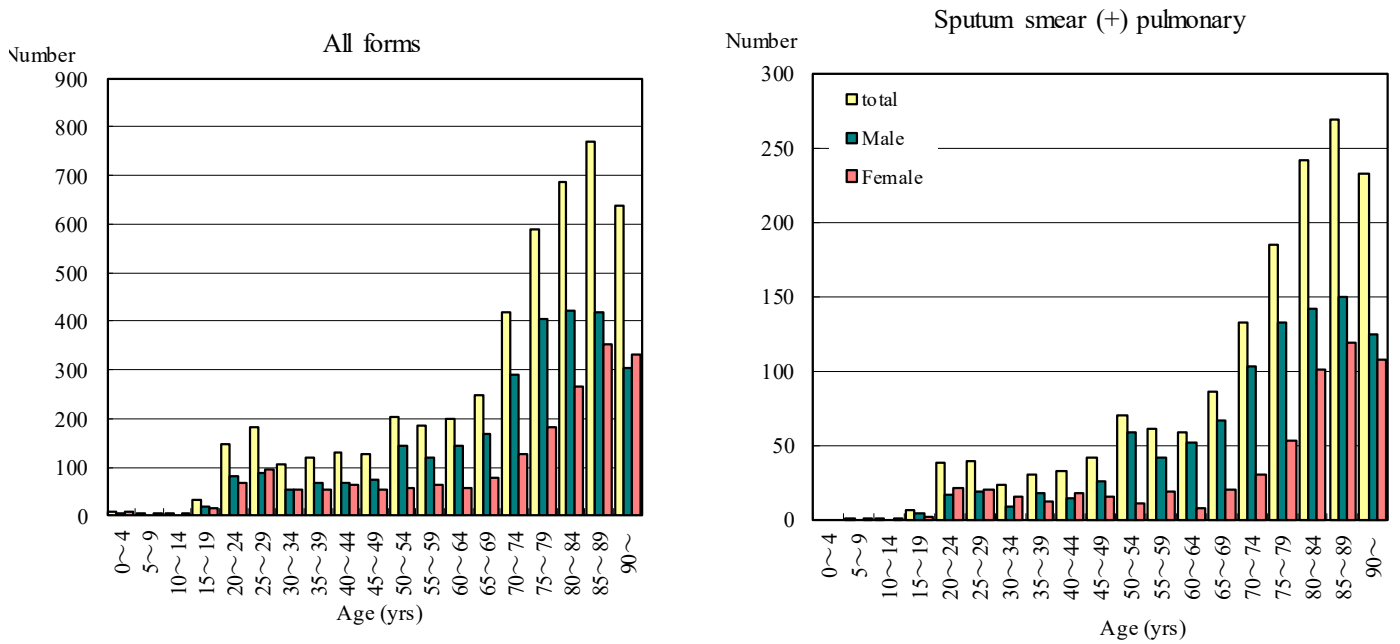


Figure 3. Notification rate of TB cases by sex and age, Japan, summation (Jan.-Jun.) 2022

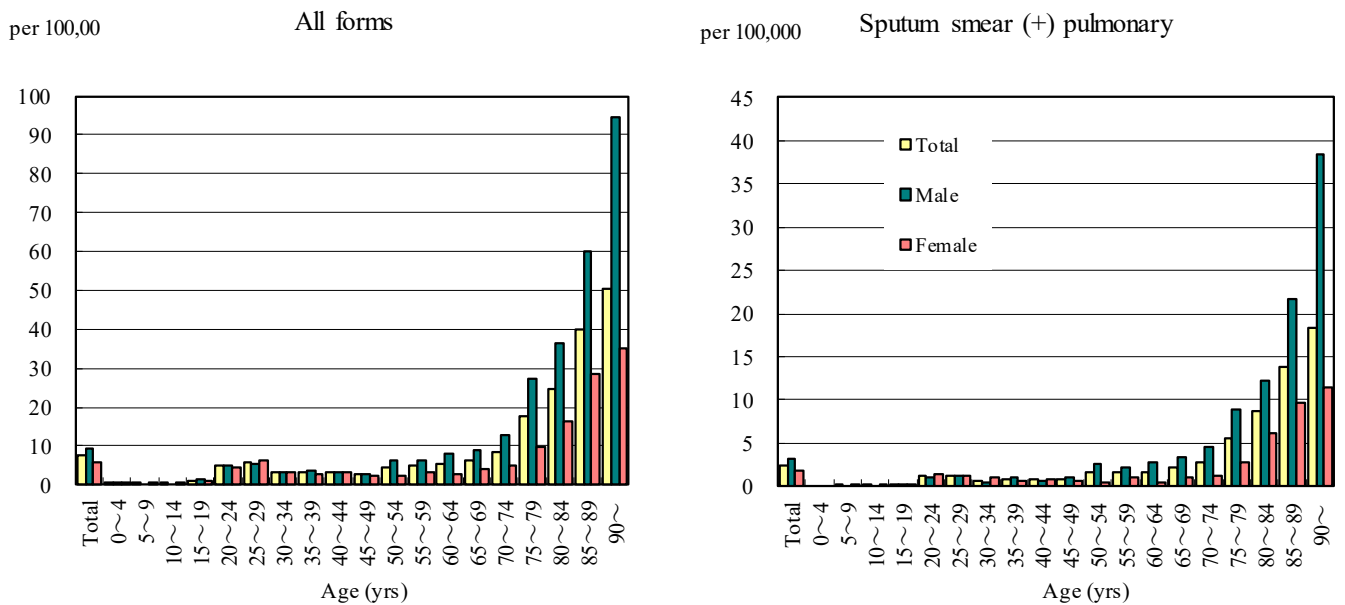


Figure 4. Notification rates of TB by prefecture, Japan, summation (Jan.-Jun.) 2022

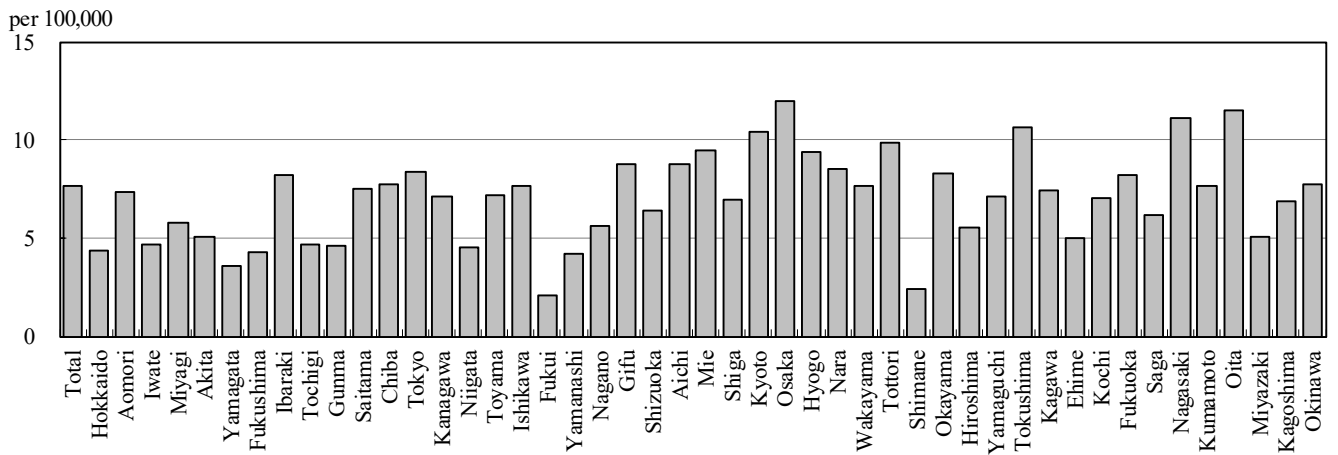


Figure 5. Notification rates of TB major city, Japan, summation (Jan.-Jun.) 2022

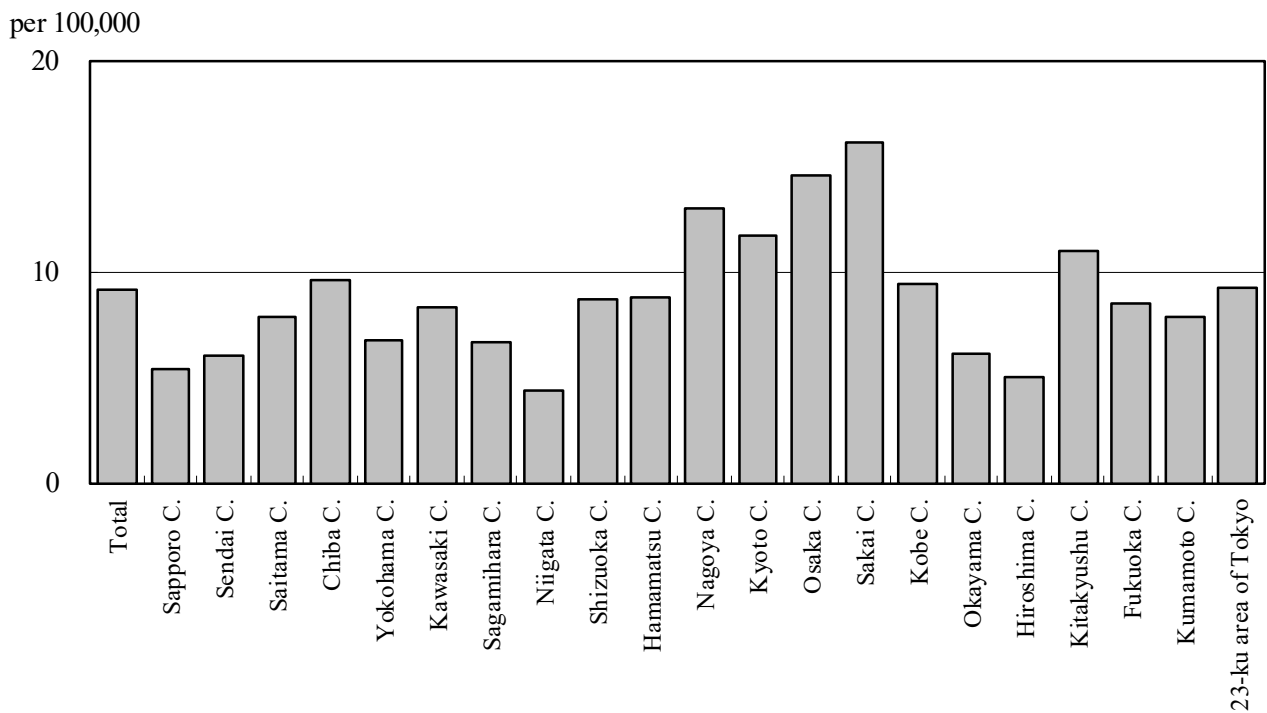


Figure 6. Number of LTBI, Japan, 2019-2022

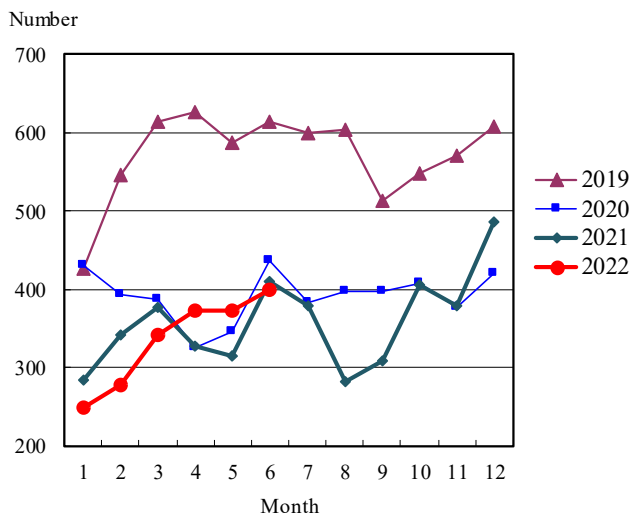


Figure 7. Number of LTBI by sex and age group, Japan, summation (Jan.-Jun.) 2022

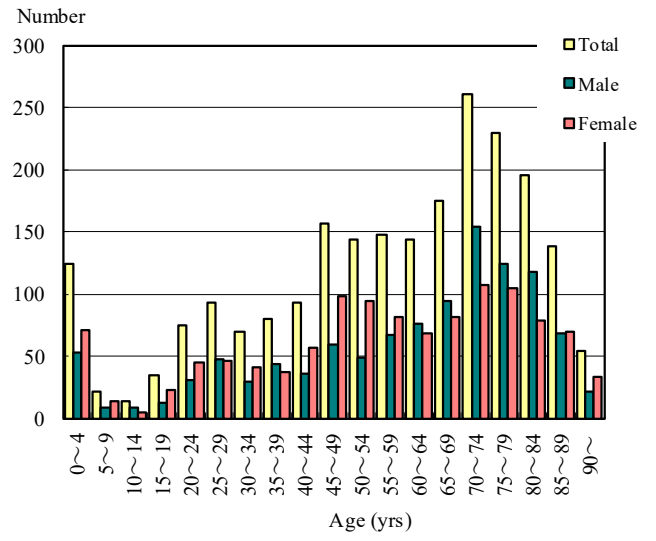


Table 1. Newly notified TB cases and rates by sex and age, Japan, 2022

	Jun.			Summation (Jan.-Jun.)			Notification rate (per 100,000)		
	Total	Male	Female	Total	Male	Female	Total	Male	Female
Total	808	500	308	4,791	2,867	1,924	7.6	9.4	6.0
0~4	0	0	0	9	1	8	0.4	0.1	0.7
5~9	1	0	1	3	0	3	0.1	0.0	0.2
10~14	0	0	0	2	0	2	0.1	0.0	0.2
15~19	15	7	8	34	18	16	1.2	1.3	1.2
20~24	37	18	19	148	82	66	4.7	5.1	4.3
25~29	34	19	15	182	88	94	5.7	5.4	6.1
30~34	17	9	8	107	54	53	3.3	3.2	3.3
35~39	21	13	8	119	67	52	3.2	3.6	2.9
40~44	20	12	8	131	68	63	3.2	3.3	3.1
45~49	18	8	10	125	73	52	2.6	3.0	2.2
50~54	25	20	5	202	144	58	4.4	6.2	2.5
55~59	34	19	15	185	120	65	4.7	6.1	3.3
60~64	24	18	6	199	144	55	5.4	7.9	2.9
65~69	41	28	13	247	169	78	6.3	8.8	3.9
70~74	73	53	20	418	290	128	8.6	12.7	5.0
75~79	94	68	26	588	405	183	17.5	27.1	9.8
80~84	119	78	41	686	422	264	24.7	36.5	16.2
85~89	123	77	46	769	417	352	39.7	60.1	28.3
90~	112	53	59	637	305	332	50.4	94.6	35.3

Temporary registrants = 94, Total of registrants and temporary registrants = 902

Rate: summation / (population\*6/12)\*100,000

Population: as of 1st Oct. 2021

Table 2. Newly notified sputum smear positive pulmonary TB cases and rates by sex and age, Japan, 2022

	Jun.			Summation (Jan.-Jun.)			Notification rate (per 100,000)		
	Total	Male	Female	Total	Male	Female	Total	Male	Female
Total	258	165	93	1,548	975	573	2.5	3.2	1.8
0~4	0	0	0	0	0	0	0.0	0.0	0.0
5~9	1	0	1	1	0	1	0.0	0.0	0.1
10~14	0	0	0	1	0	1	0.0	0.0	0.1
15~19	1	1	0	6	4	2	0.2	0.3	0.1
20~24	10	3	7	38	17	21	1.2	1.1	1.4
25~29	6	4	2	39	19	20	1.2	1.2	1.3
30~34	5	2	3	23	8	15	0.7	0.5	0.9
35~39	2	2	0	30	18	12	0.8	1.0	0.7
40~44	6	3	3	32	14	18	0.8	0.7	0.9
45~49	4	2	2	41	26	15	0.8	1.1	0.6
50~54	10	10	0	70	59	11	1.5	2.5	0.5
55~59	13	7	6	61	42	19	1.6	2.1	1.0
60~64	8	8	0	59	52	7	1.6	2.8	0.4
65~69	13	9	4	86	66	20	2.2	3.5	1.0
70~74	30	22	8	133	103	30	2.8	4.5	1.2
75~79	32	22	10	185	132	53	5.5	8.8	2.8
80~84	39	26	13	242	141	101	8.7	12.2	6.2
85~89	42	27	15	269	150	119	13.9	21.6	9.6
90~	36	17	19	232	124	108	18.4	38.4	11.5

Rate: summation / (population\*6/12)\*100,000

Population: as of 1st Oct. 2021

Table 3. Newly notified TB cases and rates by prefecture, Japan, 2022

	Jun.		Summation (Jan.-Jun.)		Notification rate (per 100,000)	
	Newly notified TB	Sputum smear (+)	Newly notified TB	Sputum smear (+)	Newly notified TB	Sputum smear (+)
Total	808	258	4,791	1,548	7.6	2.5
Hokkaido	14	4	113	33	4.4	1.3
Aomori	4	3	45	16	7.4	2.6
Iwate	7	2	28	9	4.7	1.5
Miyagi	9	2	66	30	5.8	2.6
Akita	3	1	24	7	5.1	1.5
Yamagata	2	1	19	6	3.6	1.1
Fukushima	6	4	39	15	4.3	1.7
Ibaraki	25	7	117	37	8.2	2.6
Tochigi	5	1	45	22	4.7	2.3
Gunma	8	2	44	16	4.6	1.7
Saitama	40	13	274	99	7.5	2.7
Chiba	46	8	243	63	7.7	2.0
Tokyo	114	40	585	200	8.4	2.9
Kanagawa	63	15	327	97	7.1	2.1
Niigata	10	2	49	14	4.5	1.3
Toyama	5	1	37	13	7.2	2.5
Ishikawa	4	1	43	13	7.6	2.3
Fukui	1	0	8	2	2.1	0.5
Yamanashi	8	4	17	5	4.2	1.2
Nagano	11	5	57	17	5.6	1.7
Gifu	20	6	86	25	8.8	2.5
Shizuoka	17	7	115	37	6.4	2.1
Aichi	49	15	329	94	8.8	2.5
Mie	21	7	83	30	9.5	3.4
Shiga	7	3	49	13	6.9	1.8
Kyoto	16	4	133	39	10.4	3.0
Osaka	81	34	528	194	12.0	4.4
Hyogo	44	14	254	94	9.4	3.5
Nara	9	4	56	17	8.5	2.6
Wakayama	4	2	35	10	7.7	2.2
Tottori	6	3	27	9	9.8	3.3
Shimane	1	0	8	1	2.4	0.3
Okayama	13	5	78	20	8.3	2.1
Hiroshima	18	6	77	28	5.5	2.0
Yamaguchi	7	1	47	11	7.1	1.7
Tokushima	6	3	38	8	10.7	2.2
Kagawa	6	3	35	13	7.4	2.8
Ehime	6	2	33	15	5.0	2.3
Kochi	3	3	24	10	7.0	2.9
Fukuoka	35	7	211	58	8.2	2.3
Saga	3	0	25	5	6.2	1.2
Nagasaki	5	3	72	17	11.1	2.6
Kumamoto	14	3	66	20	7.6	2.3
Oita	13	1	64	20	11.5	3.6
Miyazaki	5	2	27	9	5.1	1.7
Kagoshima	9	3	54	20	6.9	2.5
Okinawa	5	1	57	17	7.8	2.3

Rate: summation / (population\*6/12)\*100,000

Population: as of 1st Oct. 2021

Table 4. Newly notified TB cases and rates by major city, Japan, 2022

	Jun.		Summation (Jan.-Jun.)		Notification Rate (per 100,000)	
	Newly notified TB	Sputum Smear(+)	Newly notified TB	Sputum Smear(+)	Newly notified TB	Sputum Smear(+)
Total	298	94	1,703	566	9.1	3.0
Sapporo City	6	1	53	16	5.4	1.6
Sendai City	4	2	33	16	6.0	2.9
Saitama City	11	5	52	17	7.8	2.6
Chiba City	10	1	47	12	9.6	2.5
Yokohama City	30	11	127	47	6.7	2.5
Kawasaki City	5	0	64	18	8.3	2.3
Sagamihara City	7	0	24	7	6.6	1.9
Niigata City	3	1	17	6	4.3	1.5
Shizuoka City	4	0	30	10	8.7	2.9
Hamamatsu City	8	5	35	11	8.8	2.8
Nagoya City	28	10	151	50	13.0	4.3
Kyoto City	14	4	85	29	11.7	4.0
Osaka City	16	7	200	66	14.5	4.8
Sakai City	13	7	66	31	16.1	7.6
Kobe City	12	1	71	20	9.4	2.6
Okayama City	5	2	22	6	6.1	1.7
Hiroshima City	5	0	30	8	5.0	1.3
Kitakyushu City	9	1	51	10	10.9	2.1
Fukuoka City	12	3	69	21	8.5	2.6
Kumamoto City	8	0	29	8	7.9	2.2
23-ku area of Tokyo	88	33	447	157	9.2	3.2

Rate: summation / (population\*6/12)\*100,000

Population: as of 1st Oct. 2021

Major city: city with a population of one million or more.

Table 4 is a re-count of Table 3.

Table 5. LTBI cases and rates by sex and age, Japan, 2022

	Jun.			Summation (Jan.-Jun.)			(Ratio) LTBI/Newly notified cases		
	Total	Male	Female	Total	Male	Female	Total	Male	Female
Total	399	186	213	2,250	1,097	1,153	0.5	0.4	0.6
0~4	9	4	5	124	53	71	13.8	53.0	8.9
5~9	1	0	1	22	9	13	7.3	-	4.3
10~14	3	2	1	13	8	5	6.5	-	2.5
15~19	7	4	3	35	12	23	1.0	0.7	1.4
20~24	19	9	10	75	30	45	0.5	0.4	0.7
25~29	14	4	10	93	47	46	0.5	0.5	0.5
30~34	15	6	9	70	29	41	0.7	0.5	0.8
35~39	13	6	7	80	43	37	0.7	0.6	0.7
40~44	14	5	9	93	36	57	0.7	0.5	0.9
45~49	39	11	28	157	59	98	1.3	0.8	1.9
50~54	22	7	15	143	49	94	0.7	0.3	1.6
55~59	25	10	15	148	67	81	0.8	0.6	1.2
60~64	27	12	15	144	76	68	0.7	0.5	1.2
65~69	27	12	15	175	94	81	0.7	0.6	1.0
70~74	45	27	18	261	154	107	0.6	0.5	0.8
75~79	42	23	19	229	124	105	0.4	0.3	0.6
80~84	42	25	17	196	118	78	0.3	0.3	0.3
85~89	26	17	9	138	68	70	0.2	0.2	0.2
90~	9	2	7	54	21	33	0.1	0.1	0.1

LTBI: latent TB Infection

Number of LTBI is not included in the newly notified TB patients



Table 6. LTBI cases and rates by prefecture, Japan, 2022

	Jun.	Summation (Jan.-Jun.)	
	LTBI	LTBI	(Ratio) LTBI / new TB
Total	399	2,250	0.47
Hokkaido	14	94	0.83
Aomori	6	22	0.49
Iwate	5	24	0.86
Miyagi	10	29	0.44
Akita	0	7	0.29
Yamagata	1	9	0.47
Fukushima	1	14	0.36
Ibaraki	13	66	0.56
Tochigi	0	7	0.16
Gunma	7	23	0.52
Saitama	21	131	0.48
Chiba	20	136	0.56
Tokyo	59	312	0.53
Kanagawa	28	150	0.46
Niigata	3	28	0.57
Toyama	4	16	0.43
Ishikawa	7	24	0.56
Fukui	0	2	0.25
Yamanashi	5	9	0.53
Nagano	8	32	0.56
Gifu	7	39	0.45
Shizuoka	3	32	0.28
Aichi	21	151	0.46
Mie	1	11	0.13
Shiga	4	13	0.27
Kyoto	7	48	0.36
Osaka	31	227	0.43
Hyogo	23	111	0.44
Nara	4	15	0.27
Wakayama	0	8	0.23
Tottori	0	10	0.37
Shimane	0	2	0.25
Okayama	5	31	0.40
Hiroshima	13	45	0.58
Yamaguchi	5	26	0.55
Tokushima	1	6	0.16
Kagawa	4	19	0.54
Ehime	2	6	0.18
Kochi	1	6	0.25
Fukuoka	30	149	0.71
Saga	0	8	0.32
Nagasaki	5	19	0.26
Kumamoto	6	29	0.44
Oita	5	18	0.28
Miyazaki	1	6	0.22
Kagoshima	2	26	0.48
Okinawa	6	54	0.95

LTBI: Latent TB Infection

Number of LTBI is not included in the newly notified TB patients.

Table 7. LTBI cases and rates by major city, Japan, 2022

	Jun.	Summation (Jan.-Jun.)	
	LTBI	LTBI	(Ratio) LTBI / new TB
Total	137	810	0.48
Sapporo City	6	41	0.77
Sendai City	3	14	0.42
Saitama City	6	18	0.35
Chiba City	3	29	0.62
Yokohama City	9	62	0.49
Kawasaki City	8	38	0.59
Sagamihara City	3	9	0.38
Niigata City	2	7	0.41
Shizuoka City	1	8	0.27
Hamamatsu City	1	8	0.23
Nagoya City	7	68	0.45
Kyoto City	7	33	0.39
Osaka City	8	96	0.48
Sakai City	3	19	0.29
Kobe City	8	36	0.51
Okayama City	1	12	0.55
Hiroshima City	3	13	0.43
Kitakyushu City	7	35	0.69
Fukuoka City	8	45	0.65
Kumamoto City	3	11	0.38
23-ku area of Tokyo	40	208	0.47

LTBI: Latent TB Infection

Number of LTBI is not included in the newly notified TB patients,

Major city: city with a population of one million or more

Table 7 is a re-count of Table 6