

【Childhood】

Table 1 Number and rates of childhood tuberculosis patients and specific extra-pulmonary tuberculosis, 1965-2020

Year	Newly notified tuberculosis aged 0-14 yrs		No. of meningeal tuberculosis		No. of miliary tuberculosis	
	Number	Rate	0-14 yrs	0-4 yrs (Rate)	0-14 yrs	0-4 yrs (Rate)
1965	44,180	175.6	–	–	–	–
1970	18,197	73.4	–	–	–	–
1975	4,905	18.0	28	22 (0.221)	–	–
1980	1,893	6.9	22	14 (0.164)	–	–
1985	1,088	4.2	–	–	–	–
1990	518	2.3	9	4 (0.061)	10	8 (0.122)
1995	340	1.7	8	8 (0.136)	8	8 (0.136)
2000	220	1.2	7	4 (0.069)	3	3 (0.052)
2005	117	0.7	3	1 (0.018)	3	1(0.018)
2010	89	0.5	0	0	0	0
2011	84	0.5	1	0	2	1(0.019)
2012	63	0.4	1	1(0.019)	0	0
2013	66	0.4	2	2(0.038)	0	0
2014	49	0.3	5	2(0.038)	2	1(0.019)
2015	51	0.3	1	1(0.020)	1	0
2016	59	0.4	2	2(0.040)	1	1(0.020)
2017	59	0.4	2	1(0.020)	3	3(0.061)
2018	51	0.3	1	1(0.021)	1	1(0.021)
2019	38	0.2	0	0	3	2(0.042)
2020	52	0.3	1	1(0.022)	1	1(0.022)

Extra-pulmonary tuberculosis: Cases are counted independently.

Rate: per 100,000

–: Not available

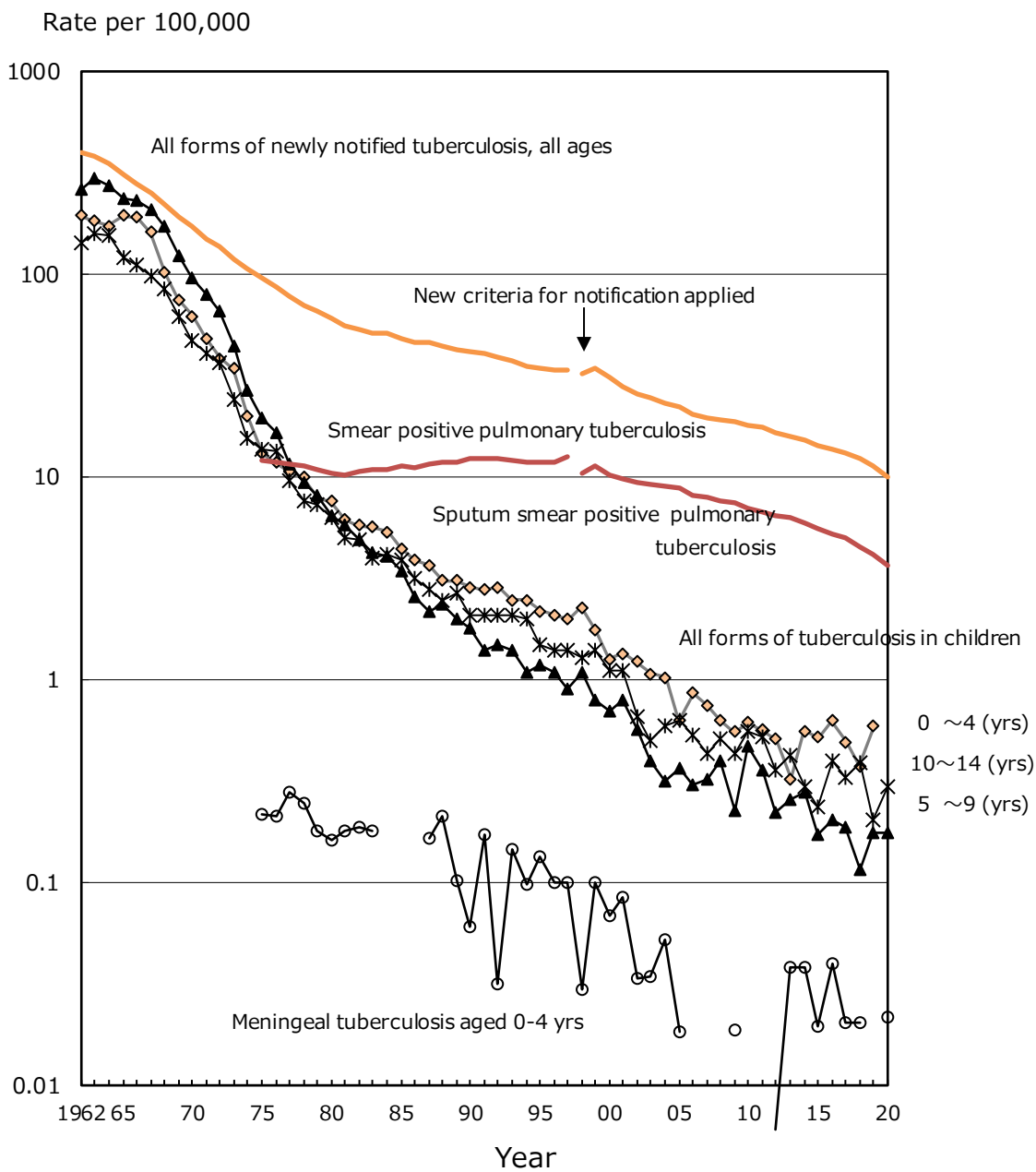


Fig. 1 Trend of childhood tuberculosis notification rates, per 100,000 population, 1962-2020

Table 2 Number of newly notified childhood tuberculosis patients by age and mode of detection, 2020

	Age (yrs)															Total
	0	1	2	3	4	5	6	7	8	9	10	11	12	13	14	
School mass-investigation	0	0	0	0	0	0	0	0	0	0	0	0	0	0	0	0
Family contact investigation	2	6	1	1	1	1	2	1	1	2	3	1	1		1	24
Other contact investigation	0	0	0	0	0	0	0	0	0	1	0	0	0	0	0	1
At clinics/hospitals (with symptoms)	10	0	1	0	1	0	0	0	0	0	3	0	3	2	1	21
Others	4	0	0	0	0	0	1	0	0	0	0	1	0	0	0	6
Total	16	6	2	1	2	1	3	1	1	3	6	2	4	2	2	52

Table 3 Proportion of BCG vaccinated cases among newly notified childhood tuberculosis patients and LTBI cases, 2020

	Age in years										0-4	5-9	10-14	Total
	Age in months					0	1	2	3	4				
	0-2	3-5	6-8	9-11	Total									
Tuberculosis cases	0	4	9	3	16	6	2	1	2	27	9	16	52	
BCG vaccinated	0	1	8	1	10	5	2	1	1	19	6	10	35	
BCG not vaccinated	0	1	0	1	2	0	0	0	0	2	0	0	2	
BCG unknown	0	2	1	1	4	1	0	0	1	6	3	6	15	
BCG vaccinated (%)*		50.0	100.0	50.0	83.3	100.0	100.0	100.0	100.0	90.5	100.0	100.0	94.6	
LTBI	29	74	148	28	279	28	26	14	18	365	58	36	459	
BCG vaccinated	0	37	96	17	150	17	15	9	9	200	28	15	243	
BCG not vaccinated	17	11	5	3	36	4	1	0	1	42	4	0	46	
BCG unknown	12	26	47	8	93	7	10	5	8	123	26	21	170	
BCG vaccinated (%)*	0.0	77.1	95.0	85.0	80.6	81.0	93.8	100.0	90.0	82.6	87.5	100.0	84.1	

LTBI : Latent Tuberculosis Infection

*% : Proportion of BCG vaccinated cases among all TB/LTBI cases excluding BCG unknown

Previous table Trend of newly notified childhood TB patients by age and calendar year, 1998-2020

Year	Age (yrs)														Total	
	0	1	2	3	4	5	6	7	8	9	10	11	12	13		14
1998	31	39	15	18	16	12	18	14	13	10	7	7	29	18	27	274
1999	43	35	24	23	9	10	15	8	7	10	8	9	27	27	25	280
2000	29	27	19	14	14	8	10	13	5	7	14	11	21	12	16	220
2001	27	18	14	9	7	4	14	11	11	8	8	4	23	18	19	195
2002	30	21	14	12	3	9	8	5	6	6	2	3	14	15	7	155
2003	23	15	17	5	12	9	5	4	1	5	4	3	4	10	10	127
2004	20	18	9	5	10	5	2	3	5	4	3	4	12	6	11	117
2005	23	11	5	13	4	4	3	7	5	3	6	5	7	13	8	117
2006	9	6	8	6	6	6	3	3	2	4	3	4	3	13	9	85
2007	21	5	7	12	2	6	5	2	4	2	2	4	4	7	9	92
2008	11	14	11	4	1	2	6	2	5	8	2	5	7	8	9	95
2009	15	8	6	3	2	4	4	1	3	1	6	1	5	8	6	73
2010	10	6	5	5	4	6	6	8	3	3	5	4	4	7	13	89
2011	5	7	6	7	8	3	7	3	3	4	6	4	5	5	11	84
2012	8	6	6	7	3	2	2	3	1	4	3	2	3	7	6	63
2013	7	4	5	4	7	3	3	2	1	5	3	4	7	3	8	66
2014	5	8	-	2	2	1	6	1	3	4	-	3	3	7	4	49
2015	13	5	5	2	4	1	-	-	6	2	-	4	4	3	2	51
2016	10	8	1	2	5	1	2	-	4	4	3	3	-	6	10	59
2017	12	6	6	2	5	3	2	2	-	3	2	4	2	5	5	59
2018	14	2	2	5	1	1	1	-	2	2	5	2	3	3	8	51
2019	14	1	1	-	2	2	3	-	3	1	1	1	3	2	4	38
2020	16	6	2	1	2	1	3	1	1	3	6	2	4	2	2	52

School mass-examination was revised in 2003.

Upper-limitation age of BCG vaccination was changed from 4 years to 6 months, with introduction of direct vaccination policy in 2005.

Previous table Number of prefectures by number of childhood TB patients, 1980-2020

Year	Number of childhood TB patients							Total
	0	1	2~4	5~9	10~14	15~19	20+(cases)	
1980	0	0	1	6	7	4	29	47
1985	0	0	5	11	10	2	19	47
1990	0	3	13	11	8	2	10	47
1995	3	6	14	13	4	2	5	47
2000	9	8	13	10	3	1	3	47
2005	17	8	13	7	2	0	0	47
2006	19	13	8	6	1	0	0	47
2007	17	12	11	5	2	0	0	47
2008	14	12	16	4	1	0	0	47
2009	27	6	8	4	2	0	0	47
2010	15	14	14	3	0	0	1	47
2011	19	11	12	4	0	0	1	47
2012	22	11	11	3	0	0	0	47
2013	19	14	9	5	0	0	0	47
2014	22	14	9	2	0	0	0	47
2015	25	10	9	3	0	0	0	47
2016	25	10	7	5	0	0	0	47
2017	25	8	11	2	1	0	0	47
2018	26	12	6	2	1	0	0	47
2019	32	5	8	2	0	0	0	47
2020	28	9	6	4	0	0	0	47

[Elderly]

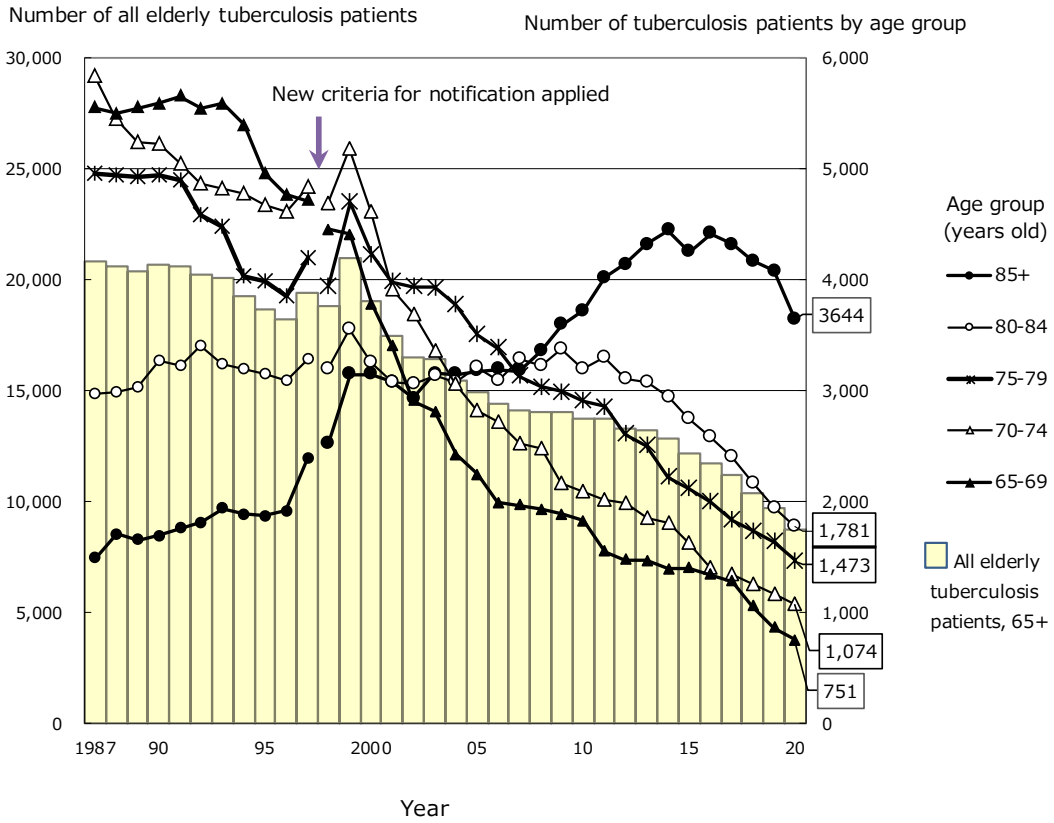


Fig.2 Annual trend of the number of newly notified elderly tuberculosis patients by age group, 1987-2020

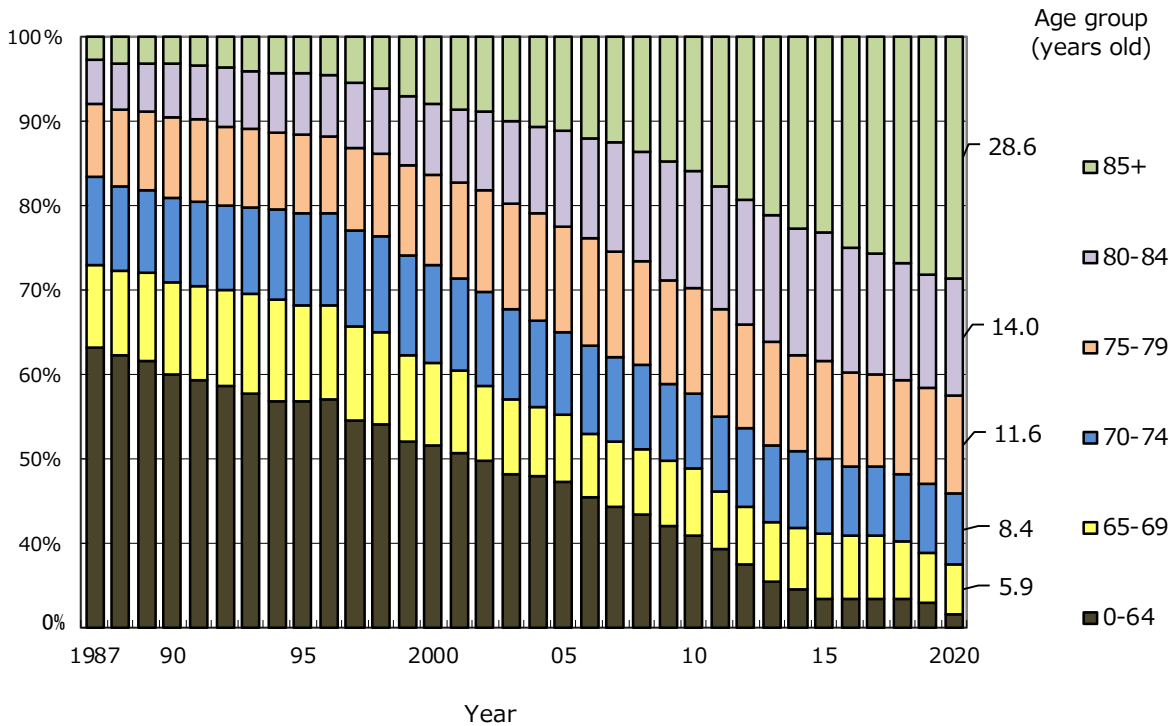


Fig.3 Annual trend of the proportion of elderly tuberculosis patients among all newly notified tuberculosis patients, 1987-2020

Rate per 100,000 population

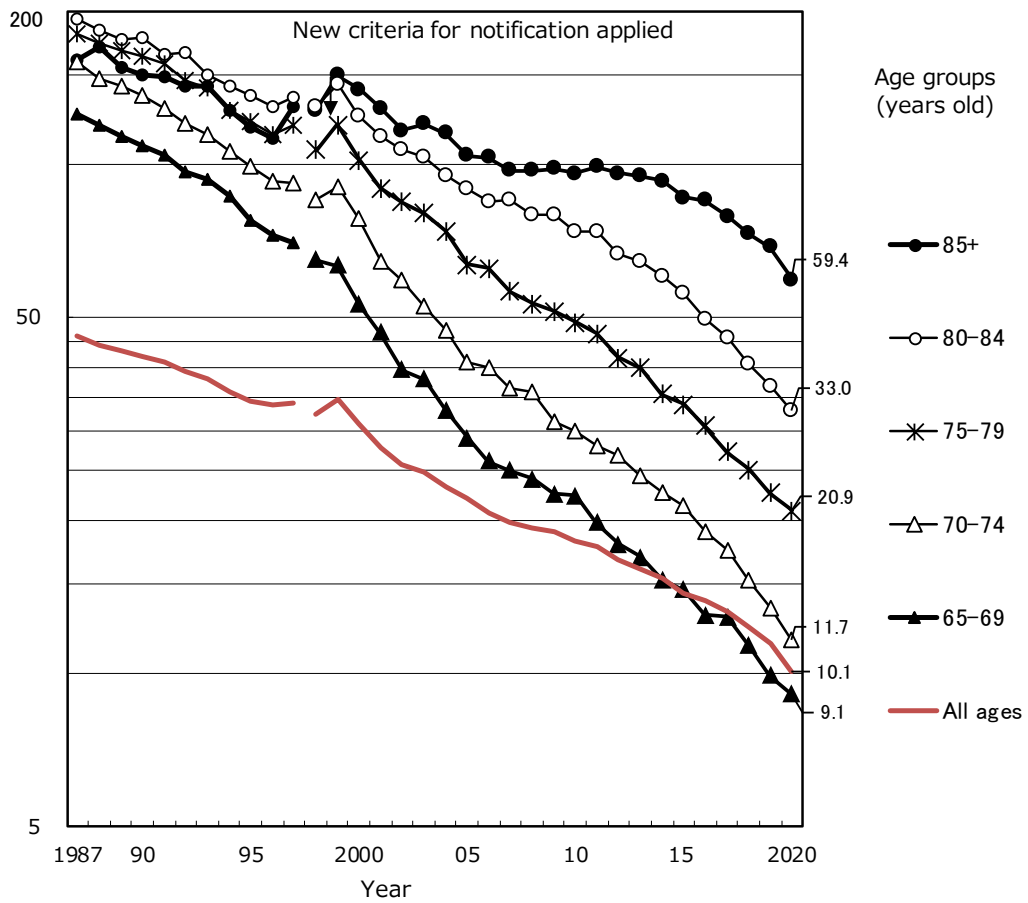


Fig.4 Annual trend of elderly tuberculosis notification rates (per 100,000 population) among the elderly population, by age group, all forms, 1987-2020

Table 4 Comparison of epidemiological indicators of newly notified tuberculosis patients by sex and age group, 2020

		Age group (years old)					
		All ages	Youth and middle-aged	The elderly			
			15-64	all 65+	65-74	75-84	85+
Number of newly notified tuberculosis patients (all forms, n)	Total	12,739	3,964	8,723	1,825	3,254	3,644
	Male	7,507	2,329	5,151	1,282	2,019	1,850
	Female	5,232	1,635	3,572	543	1,235	1,794
Tuberculosis notification rate (all forms, per 100,000 population)	Total	10.1	5.3	24.2	10.5	26.1	59.4
	Male	12.2	6.1	32.9	15.4	37.5	96.0
	Female	8.1	4.4	17.5	6.0	17.4	42.6
Number of newly notified extra-pulmonary tuberculosis patients (n)	Total	3,293	922	2,357	416	919	1,022
	Male	1,675	466	1,202	237	491	474
	Female	1,618	456	1,155	179	428	548
Proportion of extra-pulmonary tuberculosis patients among newly notified tuberculosis patients (%)	Total	25.8	23.3	27.0	22.8	28.2	28.0
	Male	22.3	20.0	23.3	18.5	24.3	25.6
	Female	30.9	27.9	32.3	33.0	34.7	30.5
Number of newly notified pulmonary tuberculosis patients (n)	Total	9,446	3,042	6,366	1,409	2,335	2,622
	Male	5,832	1,863	3,949	1,045	1,528	1,376
	Female	3,614	1,179	2,417	364	807	1,246
Proportion of pulmonary tuberculosis patients among newly notified tuberculosis patients (%)	Total	74.2	76.7	73.0	77.2	71.8	72.0
	Male	77.7	80.0	76.7	81.5	75.7	74.4
	Female	69.1	72.1	67.7	67.0	65.3	69.5
Proportion of bacteriologically positive tuberculosis patients among all pulmonary tuberculosis patients (%)	Total	86.8	78.3	91.2	86.4	90.6	94.2
	Male	87.6	80.1	91.4	87.2	91.5	94.6
	Female	85.5	75.5	90.7	84.1	89.0	93.8
Proportion of sputum-smear positive pulmonary tuberculosis patients among all pulmonary tuberculosis patients (%)	Total	48.9	39.5	53.6	47.8	53.6	56.6
	Male	49.4	41.4	53.5	49.4	54.2	55.8
	Female	47.9	36.6	53.7	43.4	52.5	57.5
Proportion of cavitory pulmonary tuberculosis patients among all pulmonary tuberculosis patients (%)	Total	27.7	29.8	26.8	33.4	26.0	24.0
	Male	30.3	34.0	28.7	35.9	27.8	24.3
	Female	23.6	23.2	23.7	26.4	22.6	23.7
Proportion of far-advanced cavitory pulmonary tuberculosis patients among all pulmonary tuberculosis patients (%)	Total	2.3	3.2	1.9	3.3	1.7	1.3
	Male	2.7	4.1	2.1	3.3	1.8	1.5
	Female	1.7	1.9	1.6	3.3	1.4	1.2
Proportion of symptomatic pulmonary tuberculosis patients upon diagnosis among all pulmonary tuberculosis (%)	Total	72.1	60.7	77.7	66.3	78.0	83.6
	Male	71.5	59.7	77.4	66.4	78.7	84.2
	Female	72.9	62.4	78.3	65.9	76.8	82.8
Proportion of pulmonary tuberculosis patients with only symptoms other than respiratory symptoms among symptomatic pulmonary tuberculosis patients (%)	Total	27.6	22.0	29.8	25.9	28.9	32.2
	Male	25.5	21.4	26.9	27.2	25.9	27.8
	Female	31.1	23.0	34.4	22.1	34.7	37.1
Proportion of patient delay of two months or more among symptomatic pulmonary tuberculosis patients (%)*	Total	19.1	25.2	16.7	25.5	15.7	13.8
	Male	19.6	26.0	17.2	25.6	15.8	13.7
	Female	18.2	24.1	15.8	25.2	15.5	13.9
Proportion of doctor delay of one month or more among symptomatic pulmonary tuberculosis patients (%)*	Total	20.9	20.1	21.2	23.8	23.3	18.2
	Male	20.7	17.2	22.0	24.0	23.2	19.4
	Female	21.3	24.6	19.9	23.4	23.5	16.9
Proportion of total delay of three months or more among symptomatic pulmonary tuberculosis patients (%)*	Total	19.7	25.1	17.6	25.4	18.0	13.9
	Male	20.1	24.7	18.4	25.1	17.6	15.2
	Female	19.0	25.7	16.4	26.5	18.8	12.5
Proportion of tuberculosis patients detected as out-patient for other diseases among newly notified tuberculosis patients (%)	Total	12.4	7.2	14.8	18.7	16.6	11.4
	Male	13.6	7.0	16.6	19.5	17.1	14.0
	Female	10.8	7.5	12.3	16.8	15.7	8.6
Proportion of tuberculosis patients detected as in-patient for other diseases among newly notified tuberculosis patients (%)	Total	16.5	4.5	22.0	14.4	20.9	26.8
	Male	15.7	4.8	20.7	14.9	20.2	25.2
	Female	17.6	4.1	23.9	13.3	22.0	28.5

Subjects: * Excluding the patients of unknown delays

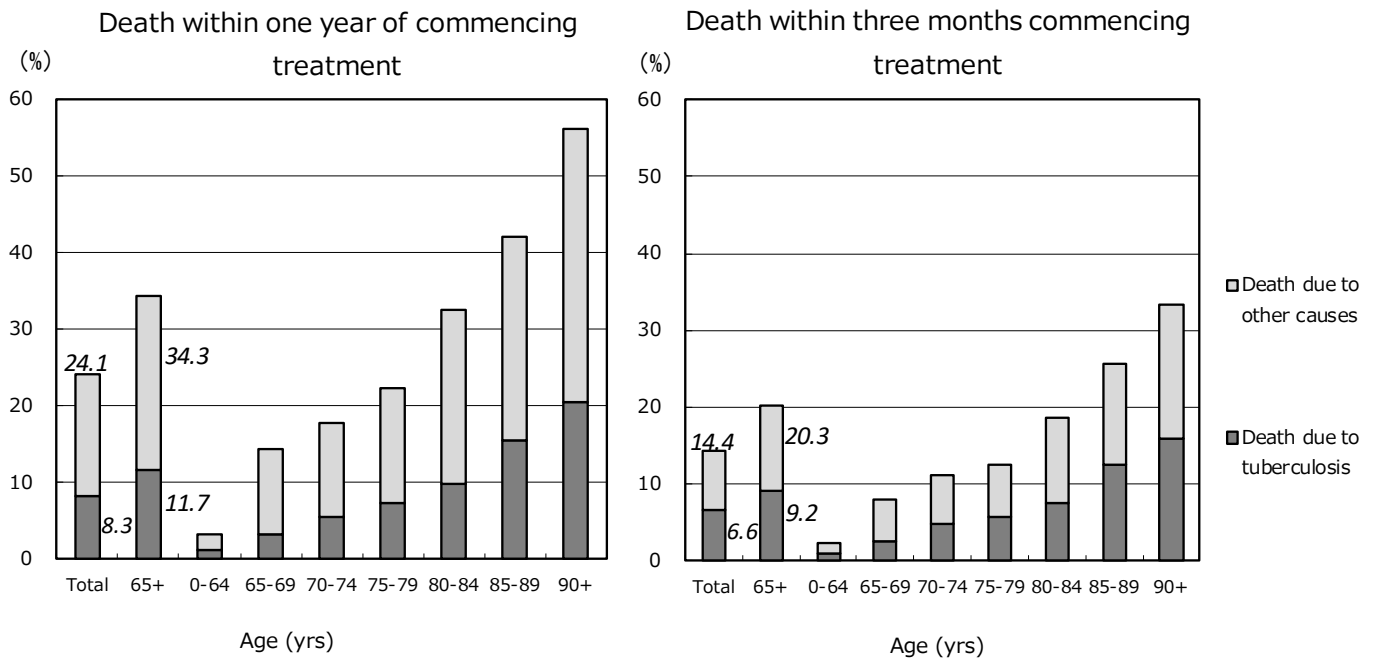


Fig.5 Proportion of death among newly notified tuberculosis patients in 2019 by age group, cause of death and duration till death

* The date when tuberculosis diagnosis was made was used as the date treatment was commenced for those who died before the start of treatment.

Previous table Number and proportion of elderly TB by prefecture and city, 2020

65+ (yrs)			85+ (yrs)		
Area	<i>n</i>	%	Area	<i>n</i>	%
Japan	8,723	68.5	Japan	3,644	28.6
Tottori	34	100.0	Tottori	24	70.6
Nagasaki	143	87.7	Yamagata	38	54.3
Miyazaki	83	86.5	Miyagi	33	47.8
Fukui	54	85.7	Akita	29	46.0
Yamagata	59	84.3	Miyazaki	44	45.8
Kouchi	41	83.7	Oita	48	44.9
Tokushima	81	83.5	Nagasaki	73	44.8
Oita	88	82.2	Kumamoto	47	44.3
Wakayama	89	80.9	Kagawa	41	43.2
Shimane	53	80.3	Fukui	27	42.9
Hyogo	343	80.1	Hokkaido	104	42.3
Aomori	96	80.0	Wakayama	46	41.8
Akita	50	79.4	Tokushima	40	41.2
Toyama	56	78.9	Okayama city	24	40.7
Kumamoto	83	78.3	Kumamoto city	26	40.6
.
Shizuoka	112	62.9	Saitama city	24	22.0
Fukuoka city	92	61.7	Yokohama city	78	21.8
Chiba city	57	61.3	Chiba city	19	20.4
Yokohama city	215	60.2	Saitama	115	20.3
Saitama	331	58.5	Tokyo	319	20.1
Chiba	297	57.3	Osaka city	115	19.9
Sagamihara city	30	56.6	Sendai city	13	19.7
Tokyo	873	54.9	Chiba	100	19.3
Gunnma	81	53.3	Sagamihara city	10	18.9
Tokyo 23wards	655	52.1	Tokyo 23wards	233	18.5

Descending order by proportion of elderly TB patients