

【Childhood】

Table 1 Number and rates of childhood tuberculosis patients and specific extra-pulmonary tuberculosis, 1965–2021

Year	Newly notified tuberculosis aged 0–14 yrs		No. of meningeal tuberculosis		No. of miliary tuberculosis	
	Number	Rate	0–14 yrs	0–4 yrs (Rate)	0–14 yrs	0–4 yrs (Rate)
1965	44,180	175.6	—	—	—	—
1970	18,197	73.4	—	—	—	—
1975	4,905	18.0	28	22 (0.221)	—	—
1980	1,893	6.9	22	14 (0.164)	—	—
1985	1,088	4.2	—	—	—	—
1990	518	2.3	9	4 (0.061)	10	8 (0.122)
1995	340	1.7	8	8 (0.136)	8	8 (0.136)
2000	220	1.2	7	4 (0.069)	3	3 (0.052)
2005	117	0.7	3	1 (0.018)	3	1(0.018)
2010	89	0.5	0	0	0	0
2011	84	0.5	1	0	2	1(0.019)
2012	63	0.4	1	1(0.019)	0	0
2013	66	0.4	2	2(0.038)	0	0
2014	49	0.3	5	2(0.038)	2	1(0.019)
2015	51	0.3	1	1(0.020)	1	0
2016	59	0.4	2	2(0.040)	1	1(0.020)
2017	59	0.4	2	1(0.020)	3	3(0.061)
2018	51	0.3	1	1(0.021)	1	1(0.021)
2019	38	0.2	0	0	3	2(0.042)
2020	52	0.3	1	1(0.022)	1	1(0.022)
2021	29	0.2	0	0	1	1(0.023)

Extra-pulmonary tuberculosis: Cases are counted independently.

Rate: per 100,000

—: Not available

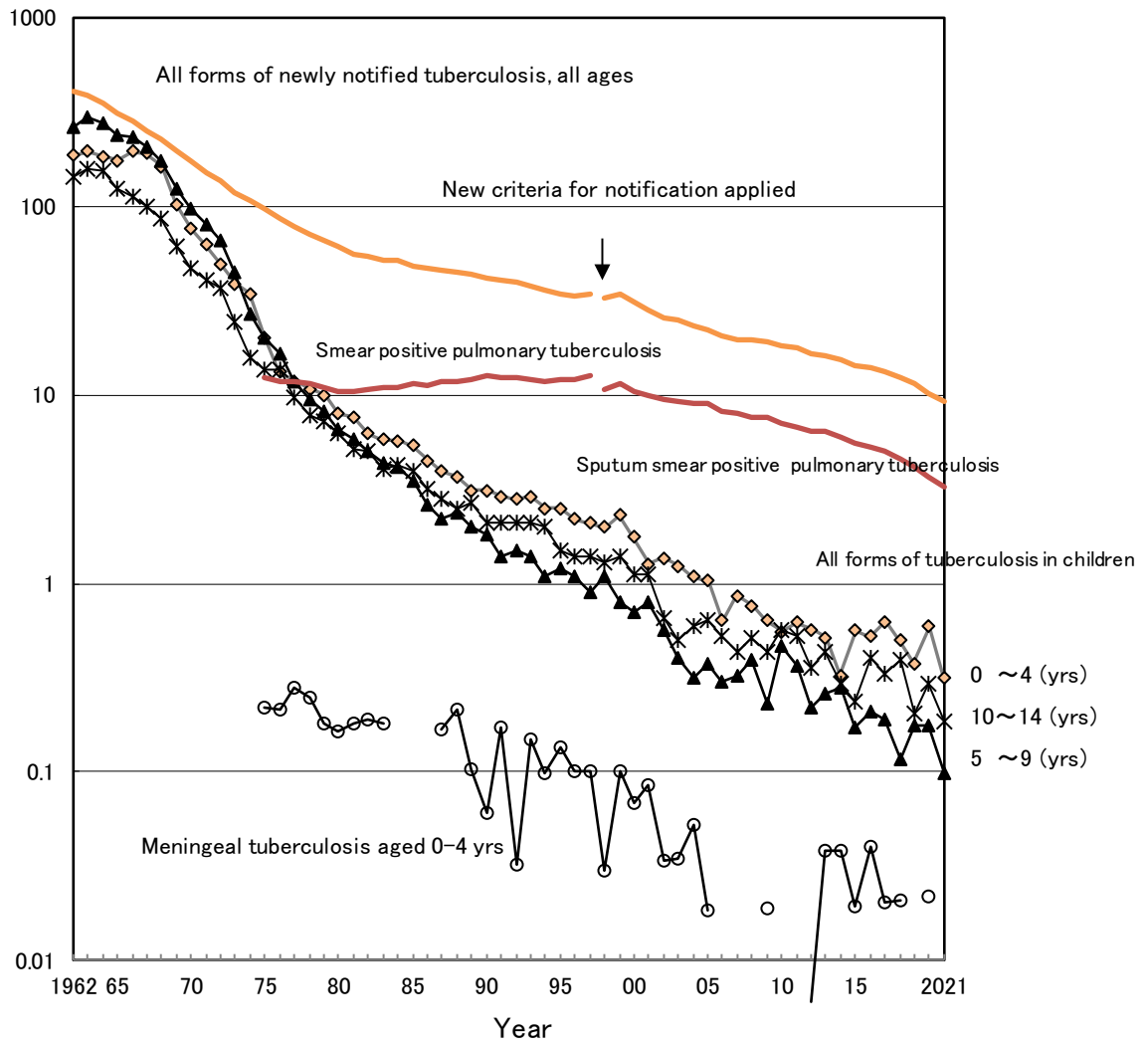


Fig. 1 Trend of childhood tuberculosis notification rates, per 100,000 population, 1962–2021

Table 2 Number of newly notified childhood tuberculosis patients by age and mode of detection, 2021

	Age (yrs)														Total	
	0	1	2	3	4	5	6	7	8	9	10	11	12	13		14
School mass-investigation	-	-	-	-	-	-	-	-	-	-	-	1	-	-	-	1
Family contact investigation	-	3	1	1	-	-	1	-	1	-	-	-	2	-	2	11
Other contact investigation	-	-	-	-	-	-	-	-	-	-	-	-	-	-	-	-
At clinics/hospitals (with symptoms)	3	1	1	-	-	-	-	1	-	1	-	2	2	1	-	12
Others	3	1	-	-	-	-	-	-	1	-	-	-	-	-	-	5
<b>Total</b>	<b>6</b>	<b>5</b>	<b>2</b>	<b>1</b>	<b>-</b>	<b>-</b>	<b>1</b>	<b>1</b>	<b>2</b>	<b>1</b>	<b>-</b>	<b>3</b>	<b>4</b>	<b>1</b>	<b>2</b>	<b>29</b>

Table 3 Proportion of BCG vaccinated cases among newly notified childhood tuberculosis patients and LTBI cases, 2021

	Age in years										0-4	5-9	10-14	Total	
	Age in months					0	1	2	3	4					Total
	0-2	3-5	6-8	9-11	Total										
Tuberculosis cases	1	3	2	0	6	5	2	1	0	14	5	10	29		
BCG vaccinated	0	2	2	0	4	4	1	0	0	9	1	4	14		
BCG not vaccinated	0	1	0	0	1	1	0	1	0	3	1	0	4		
BCG unknown	1	0	0	0	1	0	1	0	0	2	3	6	11		
BCG vaccinated (%)*		66.7	100.0		80.0	80.0	100.0	0.0		75.0	50.0	100.0	77.8		
LTBI	27	73	122	21	243	14	9	8	7	281	35	28	344		
BCG vaccinated	0	45	95	13	153	9	7	5	4	178	21	12	211		
BCG not vaccinated	21	10	4	1	36	0	1	1	0	38	0	0	38		
BCG unknown	6	18	23	7	54	5	1	2	3	65	14	16	95		
BCG vaccinated (%)*	0.0	81.8	96.0	92.9	81.0	100.0	87.5	83.3	100.0	82.4	100.0	100.0	84.7		

LTBI : Latent Tuberculosis Infection

\*%: Proportion of BCG vaccinated cases among all TB/LTBI cases excluding BCG unknown

Previous table Trend of newly notified childhood TB patients by age and calendar year, 1998–2021

Year	Age (yrs)															Total
	0	1	2	3	4	5	6	7	8	9	10	11	12	13	14	
1998	31	39	15	18	16	12	18	14	13	10	7	7	29	18	27	274
1999	43	35	24	23	9	10	15	8	7	10	8	9	27	27	25	280
2000	29	27	19	14	14	8	10	13	5	7	14	11	21	12	16	220
2001	27	18	14	9	7	4	14	11	11	8	8	4	23	18	19	195
2002	30	21	14	12	3	9	8	5	6	6	2	3	14	15	7	155
2003	23	15	17	5	12	9	5	4	1	5	4	3	4	10	10	127
2004	20	18	9	5	10	5	2	3	5	4	3	4	12	6	11	117
2005	23	11	5	13	4	4	3	7	5	3	6	5	7	13	8	117
2006	9	6	8	6	6	6	3	3	2	4	3	4	3	13	9	85
2007	21	5	7	12	2	6	5	2	4	2	2	4	4	7	9	92
2008	11	14	11	4	1	2	6	2	5	8	2	5	7	8	9	95
2009	15	8	6	3	2	4	4	1	3	1	6	1	5	8	6	73
2010	10	6	5	5	4	6	6	8	3	3	5	4	4	7	13	89
2011	5	7	6	7	8	3	7	3	3	4	6	4	5	5	11	84
2012	8	6	6	7	3	2	2	3	1	4	3	2	3	7	6	63
2013	7	4	5	4	7	3	3	2	1	5	3	4	7	3	8	66
2014	5	8	–	2	2	1	6	1	3	4	–	3	3	7	4	49
2015	13	5	5	2	4	1	–	–	6	2	–	4	4	3	2	51
2016	10	8	1	2	5	1	2	–	4	4	3	3	–	6	10	59
2017	12	6	6	2	5	3	2	2	–	3	2	4	2	5	5	59
2018	14	2	2	5	1	1	1	–	2	2	5	2	3	3	8	51
2019	14	1	1	–	2	2	3	–	3	1	1	1	3	2	4	38
2020	16	6	2	1	2	1	3	1	1	3	6	2	4	2	2	52
2021	6	5	2	1			1	1	2	1		3	4	1	2	29

School mass-examination was revised in 2003.

Upper-limitation age of BCG vaccination was changed from 4 years to 6 months, with introduction of direct vaccination policy in 2005.

Previous table Number of prefectures by number of childhood TB patients, 1980–2021

Year	Number of childhood TB patients							Total
	0	1	2~4	5~9	10~14	15~19	20+(cases)	
1980	0	0	1	6	7	4	29	47
1985	0	0	5	11	10	2	19	47
1990	0	3	13	11	8	2	10	47
1995	3	6	14	13	4	2	5	47
2000	9	8	13	10	3	1	3	47
2005	17	8	13	7	2	0	0	47
2006	19	13	8	6	1	0	0	47
2007	17	12	11	5	2	0	0	47
2008	14	12	16	4	1	0	0	47
2009	27	6	8	4	2	0	0	47
2010	15	14	14	3	0	0	1	47
2011	19	11	12	4	0	0	1	47
2012	22	11	11	3	0	0	0	47
2013	19	14	9	5	0	0	0	47
2014	22	14	9	2	0	0	0	47
2015	25	10	9	3	0	0	0	47
2016	25	10	7	5	0	0	0	47
2017	25	8	11	2	1	0	0	47
2018	26	12	6	2	1	0	0	47
2019	32	5	8	2	0	0	0	47
2020	28	9	6	4	0	0	0	47
2021	34	9	3	0	1	0	0	47

[Elderly]

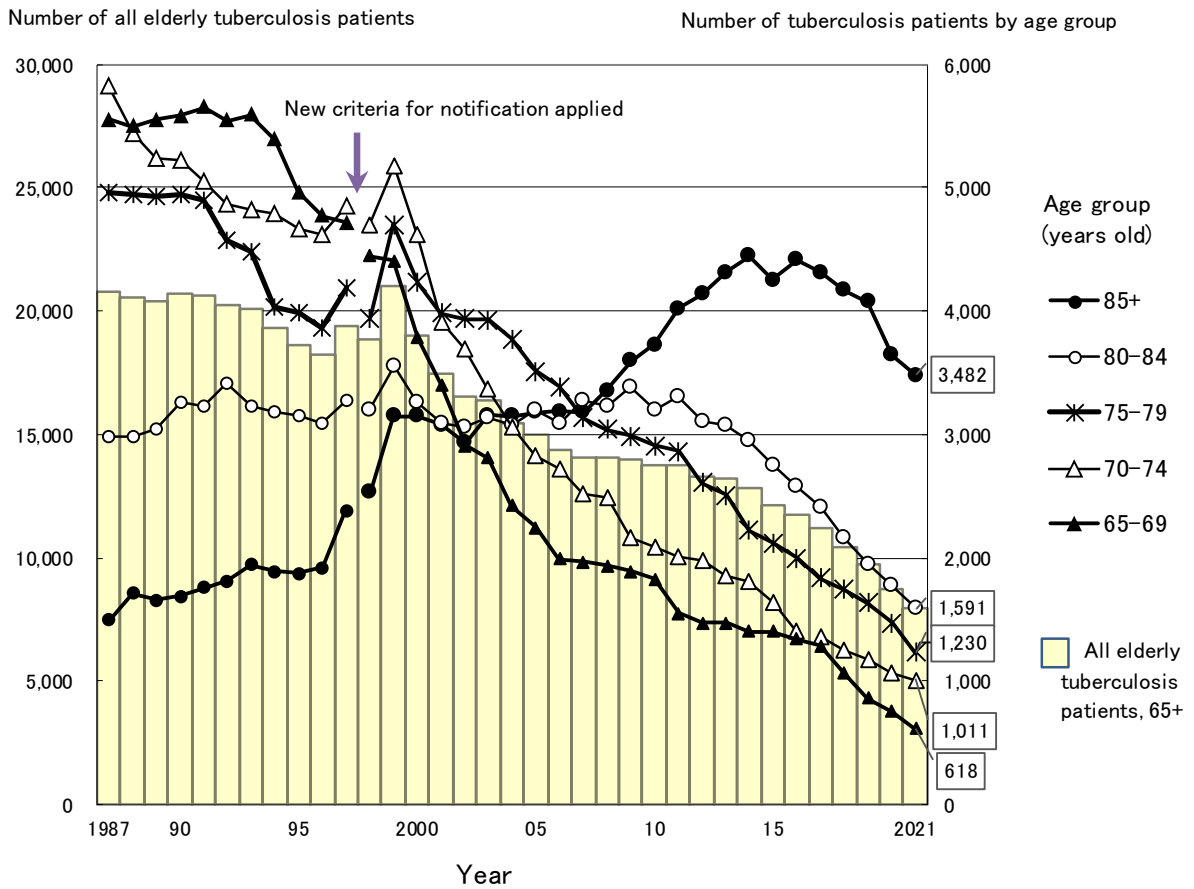


Fig.2 Annual trend of the number of newly notified elderly tuberculosis patients by age group, 1987-2021

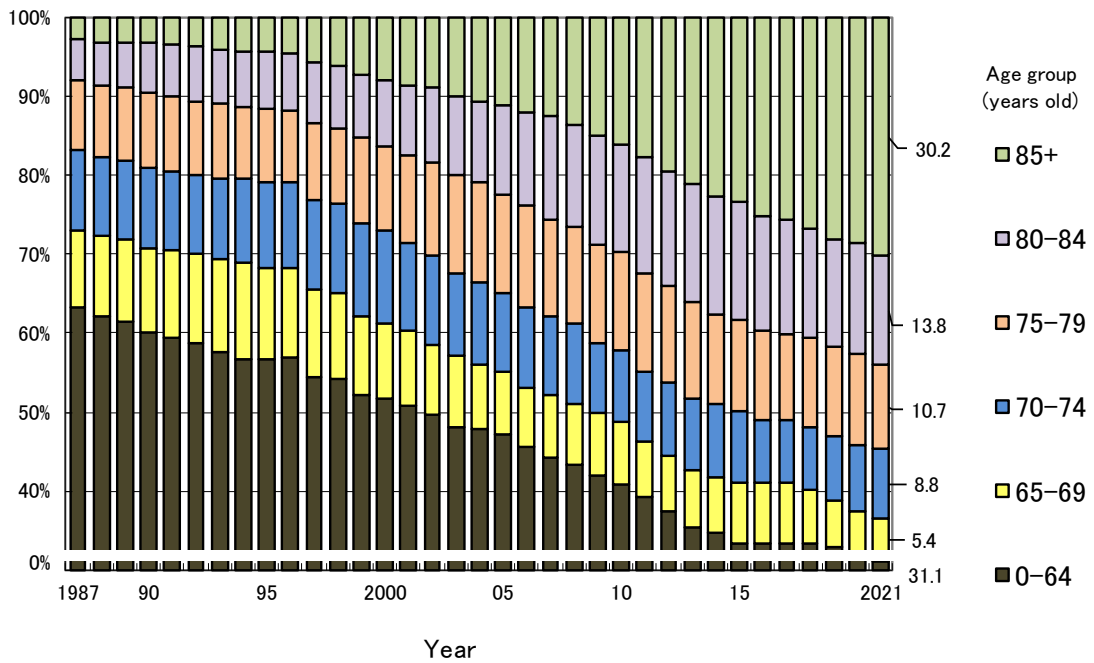


Fig.3 Annual trend of the proportion of elderly tuberculosis patients among all newly notified tuberculosis patients, 1987-2021

Rate per 100,000 population

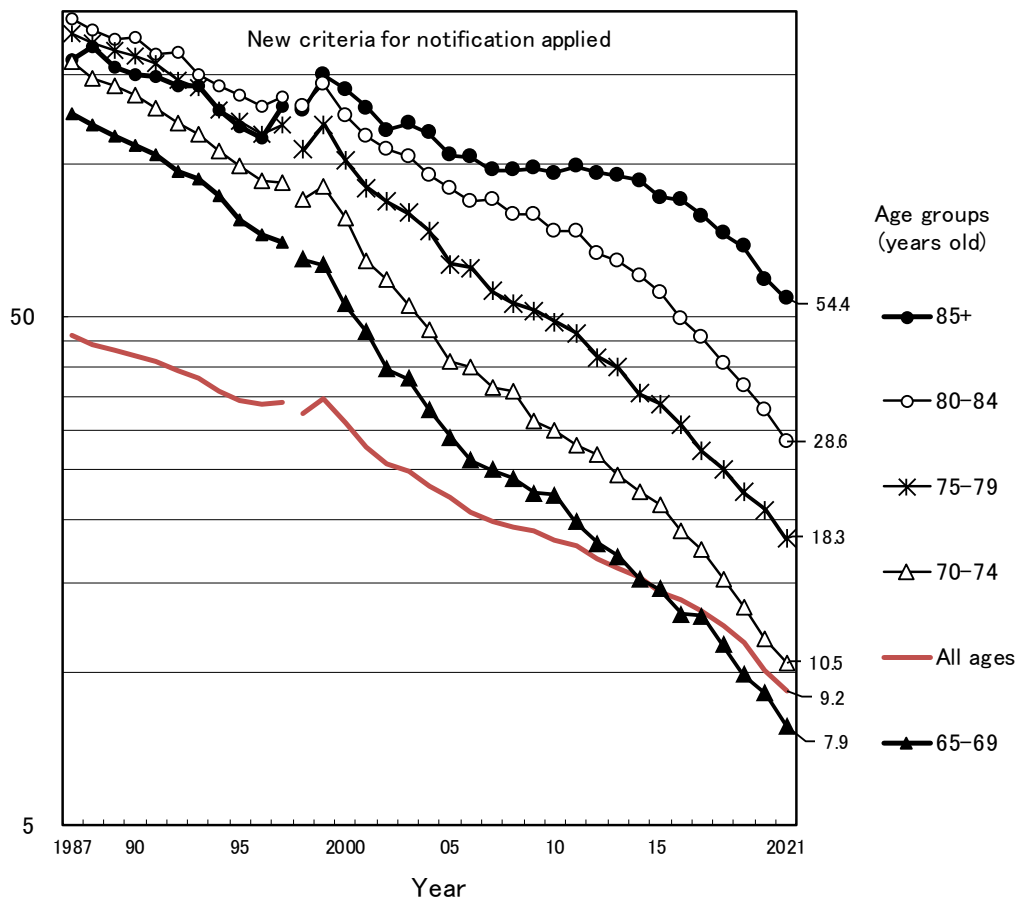


Fig.4 Annual trend of elderly tuberculosis notification rates (per 100,000 population) elderly population, by age group, all forms, 1987-2021

Table 4 Comparison of epidemiological indicators of newly notified tuberculosis patients by sex and age group, 2021

		Age group (years old)					
		All ages	Youth and middle-aged	The elderly			
			15-64	all 65+	65-74	75-84	85+
Number of newly notified tuberculosis patients (all forms, n)	Total	11,519	3,558	7,932	1,629	2,821	3,482
	Male	6,726	2,062	4,652	1,138	1,758	1,756
	Female	4,793	1,496	3,280	491	1,063	1,726
Tuberculosis notification rate (all forms, per 100,000 population)	Total	9.2	4.8	21.9	9.3	23.0	54.4
	Male	11.0	5.5	29.6	13.6	33.2	86.4
	Female	7.4	4.1	16.0	5.4	15.2	39.5
Number of newly notified extra-pulmonary tuberculosis patients (n)	Total	3,106	807	2,288	463	858	967
	Male	1,626	393	1,229	287	486	456
	Female	1,480	414	1,059	176	372	511
Proportion of extra-pulmonary tuberculosis patients among newly notified tuberculosis patients (%)	Total	27.0	22.7	28.8	28.4	30.4	27.8
	Male	24.2	19.1	26.4	25.2	27.6	26.0
	Female	30.9	27.7	32.3	35.8	35.0	29.6
Number of newly notified pulmonary tuberculosis patients (n)	Total	8,413	2,751	5,644	1,166	1,963	2,515
	Male	5,100	1,669	3,423	851	1,272	1,300
	Female	3,313	1,082	2,221	315	691	1,215
Proportion of pulmonary tuberculosis patients among newly notified tuberculosis patients (%)	Total	73.0	77.3	71.2	71.6	69.6	72.2
	Male	75.8	80.9	73.6	74.8	72.4	74.0
	Female	69.1	72.3	67.7	64.2	65.0	70.4
Proportion of bacteriologically positive tuberculosis patients among all pulmonary tuberculosis patients (%)	Total	87.4	79.0	91.6	87.0	90.8	94.3
	Male	87.6	80.5	91.1	87.0	90.9	94.2
	Female	87.1	76.6	92.3	87.0	90.7	94.5
Proportion of sputum-smear positive pulmonary tuberculosis patients among all pulmonary tuberculosis patients (%)	Total	49.1	38.1	54.5	48.4	53.1	58.4
	Male	49.6	40.3	54.3	48.9	53.2	59.0
	Female	48.1	34.8	54.8	47.0	53.0	57.9
Proportion of cavitory pulmonary tuberculosis patients among all pulmonary tuberculosis patients (%)	Total	28.6	29.4	28.2	34.0	27.9	25.8
	Male	31.9	34.3	30.8	37.1	29.2	28.3
	Female	23.4	21.9	24.2	25.4	25.6	23.0
Proportion of far-advanced cavitory pulmonary tuberculosis patients among all pulmonary tuberculosis patients (%)	Total	2.7	2.9	2.6	4.2	1.8	2.4
	Male	3.4	4.0	3.1	5.3	1.9	2.8
	Female	1.6	1.3	1.7	1.3	1.6	1.9
Proportion of symptomatic pulmonary tuberculosis patients upon diagnosis among all pulmonary tuberculosis (%)	Total	71.9	59.3	78.2	69.5	77.1	83.1
	Male	71.2	58.8	77.2	68.7	76.8	83.2
	Female	73.1	60.1	79.7	71.4	77.6	83.0
Proportion of pulmonary tuberculosis patients with only symptoms other than respiratory symptoms among symptomatic pulmonary tuberculosis patients (%)	Total	29.1	24.3	30.9	25.7	29.5	34.0
	Male	26.9	23.7	28.1	26.5	28.0	28.9
	Female	32.5	25.2	35.2	23.6	32.1	39.4
Proportion of patient delay of two months or more among symptomatic pulmonary tuberculosis patients (%)*	Total	20.8	29.8	17.3	23.1	17.8	14.5
	Male	21.8	31.3	18.0	25.3	17.9	14.0
	Female	19.3	27.6	16.1	17.6	17.6	15.0
Proportion of doctor delay of one month or more among symptomatic pulmonary tuberculosis patients (%)*	Total	23.1	24.3	22.7	25.8	24.2	20.3
	Male	22.6	21.7	23.0	22.8	24.1	22.0
	Female	23.9	28.2	22.3	33.5	24.5	18.4
Proportion of total delay of three months or more among symptomatic pulmonary tuberculosis patients (%)*	Total	22.0	31.4	18.4	27.0	18.1	15.2
	Male	22.2	29.7	19.3	27.5	18.0	16.1
	Female	21.7	34.1	17.0	25.7	18.3	14.2
Proportion of tuberculosis patients detected as out-patient for other diseases among newly notified tuberculosis patients (%)	Total	12.1	7.3	14.4	18.4	17.1	10.3
	Male	13.5	6.9	16.4	18.8	18.5	12.9
	Female	10.2	7.8	11.4	17.5	14.9	7.6
Proportion of tuberculosis patients detected as in-patient for other diseases among newly notified tuberculosis patients (%)	Total	17.2	4.9	22.8	15.8	21.7	27.0
	Male	16.8	5.9	21.7	15.5	21.3	26.1
	Female	17.9	3.5	24.4	16.7	22.5	27.8

Subjects: \* Excluding the patients of unknown delays

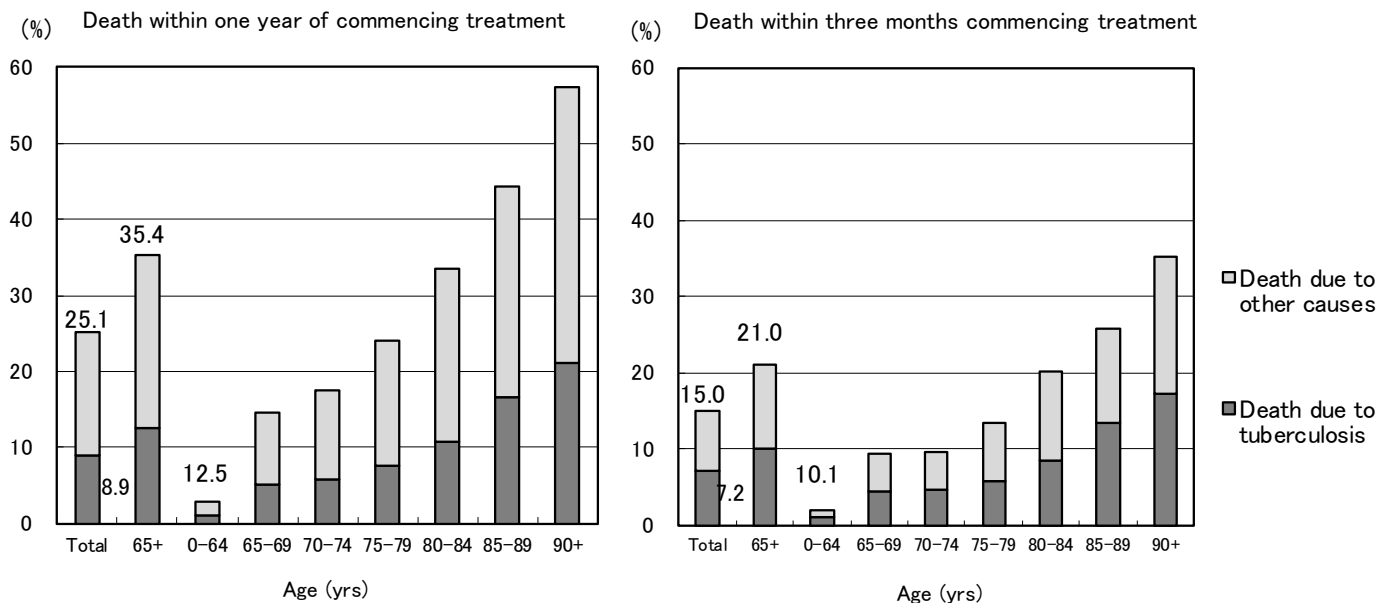


Fig.5 Proportion of death among newly notified tuberculosis patients in 2020 by age group, cause of death and duration till death

\* The date when tuberculosis diagnosis was made was used as the date treatment was commenced for those who died before the start of treatment.



Previous table Number and proportion of elderly TB by prefecture and city, 2021

65+ (yrs)			85+ (yrs)		
Area	<i>n</i>	%	Area	<i>n</i>	%
Japan	7,932	68.9	Japan	3,482	28.6
Nagasaki	153	87.4	Kumamoto	48	60.0
Akita	40	87.0	Toyama	47	56.0
Kumamoto	69	86.3	Tottori	21	55.3
Oita	98	83.8	Nagano	53	51.0
Toyama	70	83.3	Nagasaki	79	45.1
Sapporo city	91	82.0	Tokushima	41	44.6
Nara	99	81.8	Oita	52	44.4
Yamagata	49	81.7	Kyoto city	72	43.9
Tokushima	75	81.5	Akita	20	43.5
Shimane	44	81.5	Kumamoto city	20	43.5
Kumamoto city	37	80.4	Kagawa	36	43.4
Iwate	49	80.3	Okayama	44	43.1
Niigata city	36	80.0	Niigata city	19	42.2
Miyazaki	70	79.5	Kouchi	20	41.7
Fukushima	80	79.2	Sapporo city	46	41.4
.	.	.	.	.	.
Fukuoka city	84	60.9	Yokohama city	83	24.8
Ibaraki	134	60.6	Tokyo	337	23.6
Yokohama city	203	60.6	Chiba city	22	23.4
Saitama	306	60.1	Chiba	104	22.7
Chiba	266	58.0	Ibaraki	50	22.6
Saitama city	61	57.0	Tokyo 23wards	238	22.2
Tokyo	805	56.3	Saitama	110	21.6
Tokyo 23wards	574	53.6	Osaka city	103	20.1
Kawasaki city	73	52.9	Sagamihara city	8	17.0
Sagamihara city	24	51.1	Kawasaki city	17	12.3

Descending order by proportion of elderly TB patients