

【Summary】

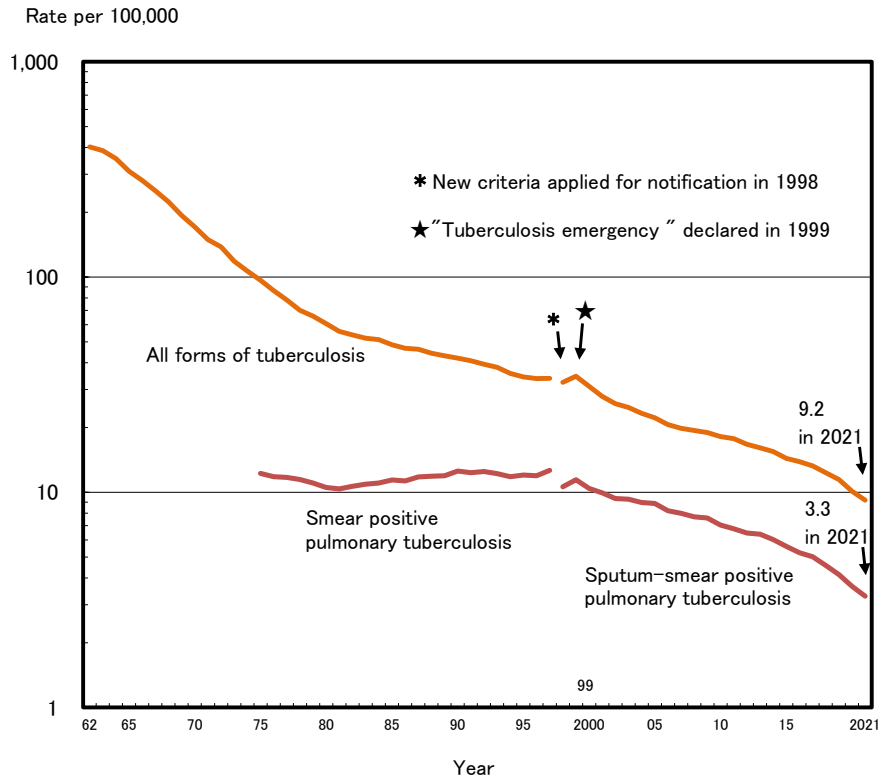


Fig. 1 Annual trend of tuberculosis notification rate (all forms, sputum-smear positive pulmonary tuberculosis) per 100,000 population in Japan, 1962–2021

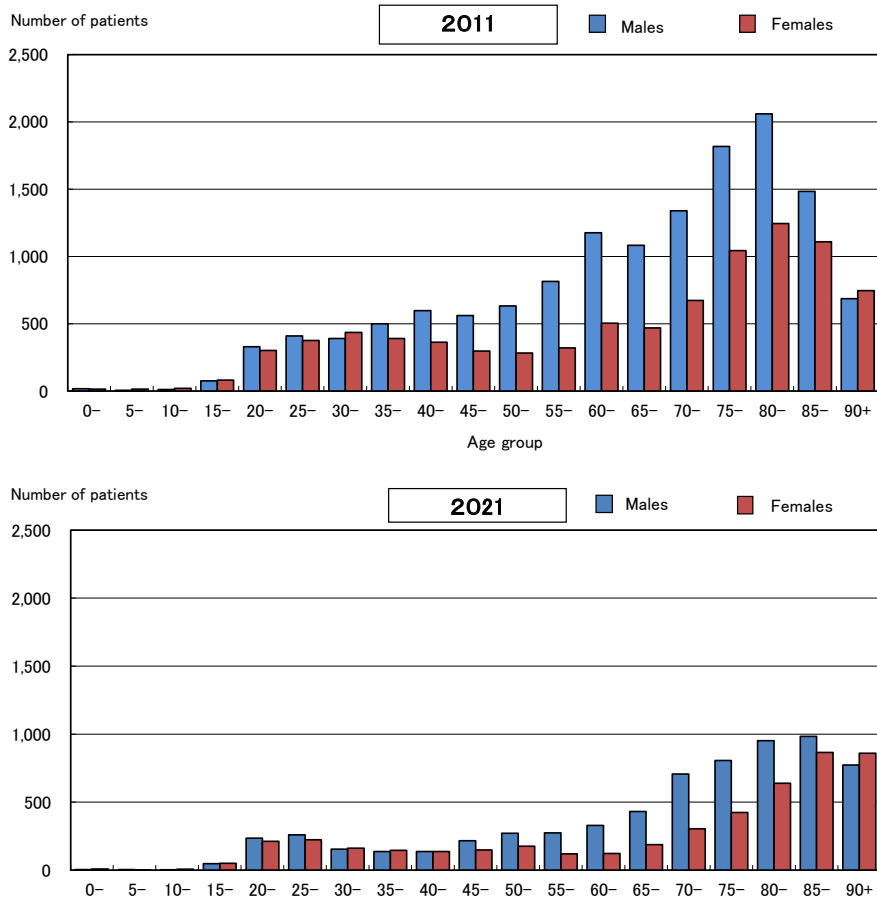


Fig. 2 Age distribution of newly notified tuberculosis patients by sex in Japan, in 2011 and in 2021

Table 1 Number of newly notified tuberculosis patients (all forms, new and re-treatment, pulmonary and extra-pulmonary), by age group, in Japan, 2013-2021

| Age group | Tuberculosis notification rates, all forms (*1) | | New tuberculosis | | | | | | | | | | | | | | | | | | | | | | | | | | | | | | | | | | | | | | | | | | | | | | | | | | | | | | | | | | | | |
|-----------|---|--------|------------------------|--------|--------|--------|--------|--------|--------|------|------|------|------|------|------|----------------------------------|------|------|-------|-------|-------|-------|-------|-------|-------|-------|-------|-------|--------------------------------------|-------|------------------------------|-------|-------|-------|-------|-------|-------|-------|-------|-------|-------|-------|-------|-------|------|------|------|------|------|------|------|------|------|------|-------|-------|-------|-------|-------|-------|-------|-------|-------|
| | | | Pulmonary tuberculosis | | | | | | | | | | | | | | | | | | | | | | | | | | Bacteriological test results unknown | | Extra-pulmonary tuberculosis | | | | | | | | | | | | | | | | | | | | | | | | | | | | | | | | |
| | | | Sputum-smear negative | | | | | | | | | | | | | | | | | | | | | | | | | | | | | | | | | | | | | | | | | | | | | | | | | | | | | | | | | | | | |
| | | | Sputum-smear positive | | | | | | | | | | | | | Other bacteriologically positive | | | | | | | | | | | | | | | | | | | | | | | | | | | | | | | | | | | | | | | | | | | | | | | |
| | 2013 | 2014 | 2015 | 2016 | 2017 | 2018 | 2019 | 2020 | 2021 | 2013 | 2014 | 2015 | 2016 | 2017 | 2018 | 2019 | 2020 | 2021 | 2013 | 2014 | 2015 | 2016 | 2017 | 2018 | 2019 | 2020 | 2021 | 2013 | 2014 | 2015 | 2016 | 2017 | 2018 | 2019 | 2020 | 2021 | 2013 | 2014 | 2015 | 2016 | 2017 | 2018 | 2019 | 2020 | 2021 | 2013 | 2014 | 2015 | 2016 | 2017 | 2018 | 2019 | 2020 | 2021 | | | | | | | | | |
| Total | 20,495 | 19,615 | 18,280 | 17,625 | 16,789 | 15,590 | 14,460 | 12,739 | 11,519 | 16.1 | 15.4 | 14.4 | 13.9 | 13.3 | 12.3 | 11.5 | 10.1 | 9.2 | 7,584 | 7,153 | 6,676 | 6,281 | 6,031 | 5,485 | 4,966 | 4,413 | 3,962 | 5,174 | 4,937 | 4,819 | 4,777 | 4,645 | 4,417 | 4,193 | 3,434 | 3,110 | 2,041 | 1,918 | 1,638 | 1,709 | 1,588 | 1,474 | 1,322 | 1,118 | 942 | 160 | 173 | 139 | 106 | 87 | 82 | 71 | 57 | 57 | 4,274 | 4,255 | 3,976 | 3,844 | 3,599 | 3,400 | 3,241 | 3,171 | 2,988 |
| 0-14 | 66 | 49 | 51 | 59 | 59 | 51 | 38 | 52 | 29 | 0.4 | 0.3 | 0.3 | 0.4 | 0.4 | 0.3 | 0.2 | 0.3 | 0.2 | 0 | 1 | 2 | 2 | 4 | 4 | 0 | 2 | 2 | 14 | 11 | 12 | 12 | 8 | 7 | 6 | 7 | 6 | 26 | 18 | 17 | 20 | 24 | 27 | 18 | 23 | 8 | 1 | 4 | 2 | 5 | 5 | 4 | 1 | 4 | 1 | 20 | 13 | 16 | 18 | 13 | 9 | 13 | 9 | 11 |
| 15-19 | 165 | 168 | 163 | 190 | 148 | 158 | 142 | 75 | 98 | 2.7 | 2.8 | 2.8 | 3.1 | 2.5 | 2.7 | 2.4 | 1.3 | 1.8 | 44 | 31 | 40 | 45 | 40 | 39 | 38 | 19 | 33 | 37 | 54 | 47 | 48 | 47 | 34 | 43 | 25 | 35 | 45 | 50 | 37 | 69 | 44 | 54 | 39 | 21 | 13 | 4 | 4 | 3 | 4 | 1 | 2 | 0 | 0 | 1 | 21 | 15 | 29 | 14 | 16 | 20 | 19 | 8 | 12 |
| 20-29 | 1,196 | 1,188 | 1,127 | 1,235 | 1,231 | 1,273 | 1,164 | 1,027 | 930 | 9.1 | 9.2 | 9.0 | 9.8 | 9.8 | 10.1 | 9.2 | 8.1 | 7.4 | 345 | 321 | 277 | 269 | 279 | 278 | 265 | 249 | 197 | 346 | 356 | 378 | 420 | 423 | 444 | 414 | 356 | 320 | 302 | 277 | 271 | 320 | 294 | 311 | 232 | 172 | 179 | 15 | 18 | 12 | 19 | 13 | 10 | 8 | 7 | 4 | 144 | 164 | 151 | 160 | 180 | 185 | 190 | 220 | 198 |
| 30-39 | 1,317 | 1,235 | 1,101 | 1,004 | 987 | 885 | 767 | 686 | 597 | 7.9 | 7.7 | 7.1 | 6.5 | 6.6 | 6.0 | 5.4 | 4.8 | 4.3 | 393 | 323 | 327 | 269 | 289 | 250 | 194 | 185 | 166 | 379 | 371 | 313 | 320 | 298 | 276 | 256 | 196 | 187 | 261 | 255 | 202 | 207 | 171 | 163 | 133 | 123 | 87 | 17 | 16 | 12 | 7 | 8 | 4 | 6 | 5 | 3 | 200 | 202 | 192 | 157 | 178 | 153 | 141 | 152 | 134 |
| 40-49 | 1,496 | 1,440 | 1,363 | 1,228 | 1,159 | 1,034 | 985 | 741 | 640 | 8.3 | 7.8 | 7.5 | 6.5 | 6.1 | 5.5 | 5.3 | 4.0 | 3.6 | 495 | 453 | 426 | 363 | 348 | 307 | 287 | 221 | 170 | 418 | 416 | 396 | 360 | 373 | 306 | 301 | 206 | 186 | 227 | 229 | 188 | 198 | 169 | 157 | 149 | 111 | 90 | 16 | 20 | 20 | 12 | 8 | 5 | 10 | 5 | 11 | 266 | 234 | 243 | 228 | 186 | 202 | 182 | 170 | 144 |
| 50-59 | 1,665 | 1,514 | 1,351 | 1,295 | 1,268 | 1,150 | 1,054 | 924 | 841 | 10.8 | 9.8 | 8.8 | 8.4 | 8.1 | 7.2 | 6.5 | 5.5 | 4.9 | 606 | 550 | 501 | 433 | 414 | 394 | 340 | 293 | 283 | 429 | 366 | 357 | 380 | 381 | 308 | 290 | 248 | 231 | 207 | 187 | 156 | 151 | 164 | 134 | 147 | 118 | 99 | 15 | 24 | 14 | 6 | 8 | 3 | 7 | 4 | 10 | 270 | 277 | 234 | 243 | 219 | 239 | 199 | 215 | 185 |
| 60-69 | 2,833 | 2,597 | 2,359 | 2,213 | 2,024 | 1,704 | 1,472 | 1,262 | 1,070 | 15.4 | 14.3 | 13.1 | 12.0 | 11.4 | 10.0 | 9.1 | 8.0 | 7.0 | 1,045 | 936 | 858 | 792 | 756 | 638 | 494 | 462 | 365 | 716 | 656 | 616 | 566 | 536 | 455 | 431 | 335 | 300 | 283 | 253 | 241 | 205 | 203 | 171 | 159 | 131 | 100 | 29 | 23 | 20 | 26 | 14 | 9 | 12 | 8 | 9 | 556 | 547 | 476 | 498 | 408 | 322 | 289 | 258 | 249 |
| 70-79 | 4,359 | 4,028 | 3,757 | 3,407 | 3,187 | 2,995 | 2,810 | 2,547 | 2,241 | 31.4 | 28.4 | 26.9 | 24.5 | 22.0 | 19.7 | 17.6 | 15.7 | 13.7 | 1,572 | 1,465 | 1,323 | 1,184 | 1,169 | 1,049 | 976 | 875 | 759 | 1,064 | 961 | 966 | 856 | 830 | 809 | 796 | 713 | 612 | 340 | 297 | 257 | 258 | 236 | 232 | 177 | 184 | 150 | 30 | 30 | 26 | 6 | 16 | 25 | 12 | 9 | 9 | 1,081 | 1,017 | 974 | 917 | 771 | 743 | 695 | 644 | 623 |
| 80-89 | 5,856 | 5,793 | 5,317 | 5,138 | 4,822 | 4,534 | 4,061 | 3,686 | 3,440 | 76.2 | 72.5 | 66.0 | 60.8 | 55.5 | 51.2 | 45.4 | 40.3 | 36.5 | 2,426 | 2,389 | 2,194 | 2,095 | 1,994 | 1,758 | 1,513 | 1,391 | 1,213 | 1,392 | 1,309 | 1,289 | 1,321 | 1,267 | 1,229 | 1,094 | 896 | 812 | 290 | 290 | 216 | 226 | 217 | 179 | 199 | 181 | 163 | 32 | 30 | 23 | 19 | 10 | 15 | 14 | 15 | 7 | 1,354 | 1,401 | 1,280 | 1,219 | 1,192 | 1,147 | 1,082 | 1,053 | 1,010 |
| 90+ | 1,542 | 1,643 | 1,691 | 1,856 | 1,904 | 1,806 | 1,967 | 1,739 | 1,633 | 95.6 | 95.7 | 92.0 | 96.3 | 92.7 | 82.8 | 85.2 | 72.7 | 64.6 | 658 | 684 | 728 | 829 | 828 | 768 | 839 | 716 | 674 | 379 | 437 | 445 | 494 | 482 | 549 | 562 | 472 | 421 | 60 | 62 | 53 | 53 | 66 | 46 | 69 | 54 | 53 | 1 | 4 | 7 | 2 | 4 | 5 | 1 | 0 | 2 | 362 | 385 | 381 | 390 | 436 | 380 | 431 | 442 | 422 |

*1: All forms include new and re-treatment tuberculosis patients.

*2: Rate per 100,000 population

Table 2 Newly notified latent tuberculosis infection (LTBI) patients, by sex and age group, in Japan, from 2019 to 2021

| Age group | 2019 | | | | | 2020 | | | | | 2021 | | | | |
|-----------|-------|-------|---------|--------------|------------------|-------|-------|---------|--------------|------------------|-------|-------|---------|--------------|------------------|
| | Total | Sex | | Ratio of F/M | Ratio of F/M (%) | Total | Sex | | Ratio of F/M | Ratio of F/M (%) | Total | Sex | | Ratio of F/M | Ratio of F/M (%) |
| | | Males | Females | | | | Males | Females | | | | Males | Females | | |
| Total | 7,684 | 3,707 | 3,977 | 100 | 1.1 | 5,575 | 2,752 | 2,823 | 100 | 1.0 | 5,140 | 2,585 | 2,555 | 100 | 1.0 |
| 0-4 | 411 | 181 | 230 | 5.3 | 1.3 | 365 | 166 | 199 | 6.5 | 1.2 | 281 | 136 | 145 | 5.5 | 1.1 |
| 5-9 | 62 | 27 | 35 | 0.8 | 1.3 | 58 | 39 | 19 | 1.0 | 0.5 | 35 | 19 | 16 | 0.7 | 0.8 |
| 10-14 | 53 | 28 | 25 | 0.7 | 0.9 | 36 | 18 | 18 | 0.6 | 1.0 | 28 | 12 | 16 | 0.5 | 1.3 |
| 15-19 | 124 | 67 | 57 | 1.6 | 0.9 | 73 | 38 | 35 | 1.3 | 0.9 | 51 | 28 | 23 | 1.0 | 0.8 |
| 20-24 | 449 | 226 | 223 | 5.8 | 1.0 | 265 | 130 | 135 | 4.8 | 1.0 | 197 | 94 | 103 | 3.8 | 1.1 |
| 25-29 | 418 | 188 | 230 | 5.4 | 1.2 | 249 | 110 | 139 | 4.5 | 1.3 | 234 | 119 | 115 | 4.6 | 1.0 |
| 30-34 | 342 | 145 | 197 | 4.5 | 1.4 | 225 | 91 | 134 | 4.0 | 1.5 | 211 | 83 | 128 | 4.1 | 1.5 |
| 35-39 | 408 | 173 | 235 | 5.3 | 1.4 | 229 | 100 | 129 | 4.1 | 1.3 | 203 | 97 | 106 | 3.9 | 1.1 |
| 40-44 | 489 | 209 | 280 | 6.4 | 1.3 | 263 | 115 | 148 | 4.7 | 1.3 | 238 | 103 | 135 | 4.6 | 1.3 |
| 45-49 | 536 | 220 | 316 | 7.0 | 1.4 | 378 | 166 | 212 | 6.8 | 1.3 | 309 | 134 | 175 | 6.0 | 1.3 |
| 50-54 | 615 | 254 | 361 | 8.0 | 1.4 | 397 | 166 | 231 | 7.1 | 1.4 | 372 | 159 | 213 | 7.2 | 1.3 |
| 55-59 | 530 | 234 | 296 | 6.9 | 1.3 | 363 | 153 | 210 | 6.5 | 1.4 | 331 | 128 | 203 | 6.4 | 1.6 |
| 60-64 | 504 | 265 | 239 | 6.6 | 0.9 | 394 | 215 | 179 | 7.1 | 0.8 | 330 | 159 | 171 | 6.4 | 1.1 |
| 65-69 | 643 | 365 | 278 | 8.4 | 0.8 | 512 | 278 | 234 | 9.2 | 0.8 | 417 | 247 | 170 | 8.1 | 0.7 |
| 70+ | 2,100 | 1,125 | 975 | 27.3 | 0.9 | 1,768 | 967 | 801 | 31.7 | 0.8 | 1,903 | 1,067 | 836 | 37.0 | 0.8 |

Ratio of F/M: Ratio of female patients to male patients

%; proportion

Previous table Newly notified tuberculosis cases by registered month, 2021

| Registered month | Active tuberculosis | | | | | | | | | |
|------------------|-------------------------------|-----------------------------------|---------------------------|-------|-------------|-------|--------------------------|---|--------------------|-----------------|
| | Active pulmonary tuberculosis | | | | | | | | LTBI* on treatment | |
| | All active tuberculosis | All active pulmonary tuberculosis | Sputum smear positive | | | | Other bacillary positive | Bacillary negative or bacillary results unknown | | Extra-pulmonary |
| | | | All sputum smear positive | New | Retreatment | 165 | | | | |
| 4,127 | | | | | | | | | | |
| Total | 11,519 | 8,413 | 4,127 | 3,962 | 165 | 3,223 | 1,063 | 3,106 | 5,140 | |
| Jan. | 801 | 624 | 299 | 280 | 19 | 248 | 77 | 177 | 330 | |
| Feb. | 867 | 654 | 307 | 297 | 10 | 267 | 80 | 213 | 388 | |
| Mar. | 1,090 | 801 | 378 | 366 | 12 | 304 | 119 | 289 | 481 | |
| Apr. | 990 | 706 | 344 | 327 | 17 | 270 | 92 | 284 | 438 | |
| May | 931 | 663 | 309 | 297 | 12 | 265 | 89 | 268 | 377 | |
| Jun. | 995 | 707 | 350 | 340 | 10 | 255 | 102 | 288 | 493 | |
| Jul. | 953 | 694 | 372 | 358 | 14 | 245 | 77 | 259 | 488 | |
| Aug. | 987 | 714 | 366 | 353 | 13 | 270 | 78 | 273 | 355 | |
| Sep. | 989 | 727 | 346 | 331 | 15 | 295 | 86 | 262 | 392 | |
| Oct. | 1,004 | 742 | 367 | 354 | 13 | 286 | 89 | 262 | 461 | |
| Nov. | 950 | 687 | 348 | 334 | 14 | 251 | 88 | 263 | 413 | |
| Dec. | 962 | 694 | 341 | 325 | 16 | 267 | 86 | 268 | 524 | |

* LTBI: Latent Tuberculosis Infection. These are not included in the number of active tuberculosis.

Table 3.1 Newly notified tuberculosis patients by affected organ, sex and age group, in Japan, from 1998 to 2021

| 2021 Sex, Age-group, in 2021 | Tuberculosis notifications, all forms | Pulmonary tuberculosis | | Extra-pulmonary tuberculosis | | | | | | | | | | | | | | | | | |
|---------------------------------------|---|------------------------|-----------|------------------------------|-----------|--------------|-----------|--------------------------------------|----------------------|---------------|-----------------|----------------|-------------------------|-----------------------------|----------|-----------|----------|----------|-----------------|------------------|-----------------|
| | | Lungs | Bronchi | Pharynx / Larynx | Miliary | Pleurals | Empyema | Hilar + Mediastinal lymph node | Other lymph nodes | Menin- ges | Intes- tines | Verte- brae | Other joints / bones | Kidneys / Urinary tracts | Genitals | Skins | Eyes | Ears | Perito- neum | Pericar- dium | Other organs |
| Total | 11,519 | 8,810 (76.5) | 91 (0.8) | 28 (0.2) | 573 (5.0) | 2,168 (18.8) | 14 (0.1) | 101 (0.9) | 659 (5.7) | 100 (0.9) | 186 (1.6) | 145 (1.3) | 103 (0.9) | 53 (0.5) | 13 (0.1) | 68 (0.6) | 30 (0.3) | 6 (0.1) | 142 (1.2) | 57 (0.5) | 146 (1.3) |
| Male | 6,726 | 5,274 (78.4) | 40 (0.6) | 13 (0.2) | 238 (3.5) | 1,444 (21.5) | 9 (0.1) | 46 (0.7) | 229 (3.4) | 58 (0.9) | 83 (1.2) | 71 (1.1) | 47 (0.7) | 36 (0.5) | 7 (0.1) | 20 (0.3) | 17 (0.3) | 4 (0.1) | 75 (1.1) | 40 (0.6) | 75 (1.1) |
| Female | 4,793 | 3,536 (73.8) | 51 (1.1) | 15 (0.3) | 335 (7.0) | 724 (15.1) | 5 (0.1) | 55 (1.1) | 430 (9.0) | 42 (0.9) | 103 (2.1) | 74 (1.5) | 56 (1.2) | 17 (0.4) | 6 (0.1) | 48 (1.0) | 13 (0.3) | 2 (0.0) | 67 (1.4) | 17 (0.4) | 71 (1.5) |
| 0-14 | 29 | 20 (69.0) | 0 (0.0) | 0 (0.0) | 1 (3.4) | 4 (13.8) | 0 (0.0) | 8 (27.6) | 2 (6.9) | 0 (0.0) | 1 (3.4) | 0 (0.0) | 0 (0.0) | 0 (0.0) | 0 (0.0) | 1 (3.4) | 0 (0.0) | 1 (3.4) | 0 (0.0) | 0 (0.0) | 0 (0.0) |
| 15-19 | 98 | 88 (89.8) | 1 (1.0) | 0 (0.0) | 0 (0.0) | 8 (8.2) | 1 (1.0) | 0 (0.0) | 6 (6.1) | 1 (1.0) | 0 (0.0) | 3 (3.1) | 2 (2.0) | 0 (0.0) | 0 (0.0) | 0 (0.0) | 0 (0.0) | 0 (0.0) | 0 (0.0) | 0 (0.0) | 0 (0.0) |
| 20-29 | 930 | 740 (79.6) | 5 (0.5) | 2 (0.2) | 16 (1.7) | 81 (8.7) | 1 (0.1) | 26 (2.8) | 120 (12.9) | 8 (0.9) | 13 (1.4) | 8 (0.9) | 17 (1.8) | 3 (0.3) | 1 (0.1) | 3 (0.3) | 7 (0.8) | 0 (0.0) | 16 (1.7) | 2 (0.2) | 16 (1.7) |
| 30-39 | 597 | 464 (77.7) | 10 (1.7) | 4 (0.7) | 11 (1.8) | 47 (7.9) | 2 (0.3) | 9 (1.5) | 87 (14.6) | 5 (0.8) | 16 (2.7) | 9 (1.5) | 5 (0.8) | 3 (0.5) | 4 (0.7) | 1 (0.2) | 4 (0.7) | 1 (0.2) | 9 (1.5) | 1 (0.2) | 14 (2.3) |
| 40-49 | 640 | 489 (76.4) | 9 (1.4) | 4 (0.6) | 7 (1.1) | 69 (10.8) | 0 (0.0) | 9 (1.4) | 61 (9.5) | 2 (0.3) | 25 (3.9) | 5 (0.8) | 2 (0.3) | 2 (0.3) | 0 (0.0) | 1 (0.2) | 6 (0.9) | 0 (0.0) | 10 (1.6) | 2 (0.3) | 14 (2.2) |
| 50-59 | 841 | 659 (78.4) | 6 (0.7) | 5 (0.6) | 19 (2.3) | 101 (12.0) | 2 (0.2) | 7 (0.8) | 63 (7.5) | 11 (1.3) | 35 (4.2) | 12 (1.4) | 2 (0.2) | 3 (0.4) | 1 (0.1) | 6 (0.7) | 2 (0.2) | 1 (0.1) | 12 (1.4) | 3 (0.4) | 13 (1.5) |
| 60-69 | 1,070 | 833 (77.9) | 12 (1.1) | 1 (0.1) | 37 (3.5) | 151 (14.1) | 0 (0.0) | 16 (1.5) | 54 (5.0) | 18 (1.7) | 23 (2.1) | 13 (1.2) | 14 (1.3) | 5 (0.5) | 1 (0.1) | 5 (0.5) | 4 (0.4) | 0 (0.0) | 15 (1.4) | 5 (0.5) | 21 (2.0) |
| 70-79 | 2,241 | 1,658 (74.0) | 23 (1.0) | 2 (0.1) | 106 (4.7) | 422 (18.8) | 3 (0.1) | 16 (0.7) | 128 (5.7) | 22 (1.0) | 35 (1.6) | 34 (1.5) | 18 (0.8) | 17 (0.8) | 2 (0.1) | 19 (0.8) | 6 (0.3) | 3 (0.1) | 38 (1.7) | 10 (0.4) | 28 (1.2) |
| 80-89 | 3,440 | 2,575 (74.9) | 17 (0.5) | 9 (0.3) | 250 (7.3) | 858 (24.9) | 3 (0.1) | 9 (0.3) | 112 (3.3) | 28 (0.8) | 35 (1.0) | 48 (1.4) | 29 (0.8) | 17 (0.5) | 2 (0.1) | 18 (0.5) | 1 (0.0) | 0 (0.0) | 30 (0.9) | 25 (0.7) | 31 (0.9) |
| 90+ | 1,633 | 1,284 (78.6) | 8 (0.5) | 1 (0.1) | 126 (7.7) | 427 (26.1) | 2 (0.1) | 1 (0.1) | 26 (1.6) | 5 (0.3) | 3 (0.2) | 13 (0.8) | 14 (0.9) | 3 (0.2) | 2 (0.1) | 14 (0.9) | 0 (0.0) | 0 (0.0) | 12 (0.7) | 9 (0.6) | 9 (0.6) |
| Year | Total | | | | | | | | | | | | | | | | | | | | |
| 1998 | 41,033 | 33,981 (82.8) | - | - | 505 (1.2) | 5,125 (12.5) | 251 (0.6) | 136 (0.3) | 1,469 (3.6) | 154 (0.4) | 335 (0.8) | 385 (0.9) | 328 (0.8) | 227 (0.6) | 78 (0.2) | 100 (0.2) | 12 (0.0) | 25 (0.1) | - | - | 692 (1.7) |
| 1999 | 43,818 | 36,190 (82.6) | - | - | 603 (1.4) | 5,586 (12.7) | 221 (0.5) | 143 (0.3) | 1,538 (3.5) | 163 (0.4) | 345 (0.8) | 334 (0.8) | 300 (0.7) | 179 (0.4) | 96 (0.2) | 94 (0.2) | 13 (0.0) | 28 (0.1) | - | - | 684 (1.6) |
| 2000 | 39,384 | 32,338 (82.1) | - | - | 597 (1.5) | 5,108 (13.0) | 202 (0.5) | 123 (0.3) | 1,432 (3.6) | 158 (0.4) | 356 (0.9) | 319 (0.8) | 272 (0.7) | 181 (0.5) | 72 (0.2) | 123 (0.3) | 16 (0.0) | 38 (0.1) | - | - | 656 (1.7) |
| 2001 | 35,489 | 28,868 (81.3) | - | - | 642 (1.8) | 4,840 (13.6) | 162 (0.5) | 102 (0.3) | 1,368 (3.9) | 177 (0.5) | 275 (0.8) | 276 (0.8) | 274 (0.8) | 172 (0.5) | 72 (0.2) | 104 (0.3) | 11 (0.0) | 25 (0.1) | - | - | 619 (1.7) |
| 2002 | 32,828 | 26,472 (80.6) | - | - | 626 (1.9) | 4,666 (14.2) | 152 (0.5) | 84 (0.3) | 1,269 (3.9) | 188 (0.6) | 323 (1.0) | 299 (0.9) | 222 (0.7) | 148 (0.5) | 66 (0.2) | 100 (0.3) | 19 (0.1) | 29 (0.1) | - | - | 544 (1.7) |
| 2003 | 31,638 | 25,478 (80.5) | - | - | 639 (2.0) | 4,539 (14.3) | 142 (0.4) | 83 (0.3) | 1,341 (4.2) | 149 (0.5) | 276 (0.9) | 268 (0.8) | 223 (0.7) | 144 (0.5) | 47 (0.1) | 87 (0.3) | 15 (0.0) | 28 (0.1) | - | - | 570 (1.8) |
| 2004 | 29,736 | 23,829 (80.1) | - | - | 617 (2.1) | 4,491 (15.1) | 125 (0.4) | 70 (0.2) | 1,293 (4.3) | 160 (0.5) | 299 (1.0) | 275 (0.9) | 220 (0.7) | 112 (0.4) | 53 (0.2) | 95 (0.3) | 13 (0.0) | 30 (0.1) | - | - | 564 (1.9) |
| 2005 | 28,319 | 22,655 (80.0) | - | - | 585 (2.1) | 4,338 (15.3) | 115 (0.4) | 88 (0.3) | 1,151 (4.1) | 180 (0.6) | 296 (1.0) | 233 (0.8) | 201 (0.7) | 130 (0.5) | 37 (0.1) | 98 (0.3) | 11 (0.0) | 33 (0.1) | - | - | 536 (1.9) |
| 2006 | 26,384 | 20,856 (79.0) | - | - | 616 (2.3) | 4,192 (15.9) | 97 (0.4) | 79 (0.3) | 1,191 (4.5) | 127 (0.5) | 263 (1.0) | 248 (0.9) | 231 (0.9) | 112 (0.4) | 40 (0.2) | 109 (0.4) | 9 (0.0) | 24 (0.1) | - | - | 554 (2.1) |
| 2007 | 25,311 | 20,264 (80.1) | 108 (0.4) | 31 (0.1) | 602 (2.4) | 4,134 (16.3) | 75 (0.3) | 57 (0.2) | 1,186 (4.7) | 153 (0.6) | 328 (1.3) | 232 (0.9) | 190 (0.8) | 108 (0.4) | 34 (0.1) | 92 (0.4) | 19 (0.1) | 18 (0.1) | 92 (0.4) | 61 (0.2) | 281 (1.1) |
| 2008 | 24,760 | 19,780 (79.9) | 117 (0.5) | 43 (0.2) | 570 (2.3) | 4,001 (16.2) | 78 (0.3) | 68 (0.3) | 1,194 (4.8) | 171 (0.7) | 292 (1.2) | 273 (1.1) | 170 (0.7) | 121 (0.5) | 34 (0.1) | 92 (0.4) | 13 (0.1) | 29 (0.1) | 144 (0.6) | 80 (0.3) | 181 (0.7) |
| 2009 | 24,170 | 19,278 (79.8) | 121 (0.5) | 36 (0.1) | 604 (2.5) | 3,940 (16.3) | 63 (0.3) | 73 (0.3) | 1,221 (5.1) | 162 (0.7) | 321 (1.3) | 241 (1.0) | 182 (0.8) | 100 (0.4) | 23 (0.1) | 121 (0.5) | 26 (0.1) | 22 (0.1) | 168 (0.7) | 88 (0.4) | 179 (0.7) |
| 2010 | 23,261 | 18,735 (80.5) | 127 (0.5) | 53 (0.2) | 598 (2.6) | 3,959 (17.0) | 48 (0.2) | 74 (0.3) | 1,158 (5.0) | 138 (0.6) | 330 (1.4) | 239 (1.0) | 159 (0.7) | 88 (0.4) | 35 (0.2) | 97 (0.4) | 29 (0.1) | 12 (0.1) | 154 (0.7) | 76 (0.3) | 171 (0.7) |
| 2011 | 22,681 | 17,969 (79.2) | 129 (0.6) | 57 (0.3) | 695 (3.1) | 3,929 (17.3) | 52 (0.2) | 70 (0.3) | 1,199 (5.3) | 156 (0.7) | 317 (1.4) | 250 (1.1) | 145 (0.6) | 83 (0.4) | 22 (0.1) | 89 (0.4) | 27 (0.1) | 21 (0.1) | 173 (0.8) | 89 (0.4) | 187 (0.8) |
| 2012 | 21,283 | 16,826 (79.1) | 107 (0.5) | 46 (0.2) | 608 (2.9) | 3,653 (17.2) | 63 (0.3) | 134 (0.6) | 1,038 (4.9) | 152 (0.7) | 348 (1.6) | 255 (1.2) | 157 (0.7) | 82 (0.4) | 20 (0.1) | 97 (0.5) | 34 (0.2) | 16 (0.1) | 176 (0.8) | 80 (0.4) | 166 (0.8) |
| 2014 | 19,615 | 15,586 (79.5) | 100 (0.5) | 37 (0.2) | 642 (3.3) | 3,421 (17.4) | 41 (0.2) | 137 (0.7) | 978 (5.0) | 184 (0.9) | 281 (1.4) | 212 (1.1) | 132 (0.7) | 68 (0.3) | 15 (0.1) | 101 (0.5) | 30 (0.2) | 15 (0.1) | 207 (1.1) | 67 (0.3) | 153 (0.8) |
| 2015 | 18,280 | 14,581 (79.8) | 119 (0.7) | 43 (0.2) | 631 (3.5) | 3,277 (17.9) | 46 (0.3) | 128 (0.7) | 813 (4.4) | 166 (0.9) | 248 (1.4) | 192 (1.1) | 98 (0.5) | 73 (0.4) | 21 (0.1) | 87 (0.5) | 20 (0.1) | 19 (0.1) | 176 (1.0) | 69 (0.4) | 134 (0.7) |
| 2016 | 17,625 | 14,014 (79.5) | 119 (0.7) | 44 (0.2) | 633 (3.6) | 3,141 (17.8) | 30 (0.2) | 121 (0.7) | 835 (4.7) | 164 (0.9) | 264 (1.5) | 194 (1.1) | 101 (0.6) | 83 (0.5) | 19 (0.1) | 80 (0.5) | 25 (0.1) | 15 (0.1) | 184 (1.0) | 81 (0.5) | 149 (0.8) |
| 2017 | 16,789 | 13,469 (80.2) | 97 (0.6) | 30 (0.2) | 687 (4.1) | 2,868 (17.1) | 31 (0.2) | 140 (0.8) | 779 (4.6) | 164 (1.0) | 220 (1.3) | 150 (0.9) | 91 (0.5) | 53 (0.3) | 19 (0.1) | 80 (0.5) | 19 (0.1) | 18 (0.1) | 178 (1.1) | 73 (0.4) | 161 (1.0) |
| 2018 | 15,590 | 12,505 (80.2) | 84 (0.5) | 31 (0.2) | 616 (4.0) | 2,640 (16.9) | 27 (0.2) | 107 (0.7) | 761 (4.9) | 150 (1.0) | 228 (1.5) | 155 (1.0) | 97 (0.6) | 67 (0.4) | 16 (0.1) | 79 (0.5) | 21 (0.1) | 10 (0.1) | 148 (0.9) | 65 (0.4) | 129 (0.8) |
| 2019 | 14,460 | 11,584 (80.1) | 76 (0.5) | 24 (0.2) | 639 (4.4) | 2,671 (18.5) | 28 (0.2) | 111 (0.8) | 669 (4.6) | 137 (0.9) | 227 (1.6) | 135 (0.9) | 73 (0.5) | 51 (0.4) | 18 (0.1) | 63 (0.4) | 25 (0.2) | 12 (0.1) | 152 (1.1) | 50 (0.3) | 125 (0.9) |
| 2020 | 12,739 | 9,906 (77.8) | 93 (0.7) | 32 (0.3) | 653 (5.1) | 2,356 (18.5) | 30 (0.2) | 132 (1.0) | 704 (5.5) | 129 (1.0) | 197 (1.5) | 122 (1.0) | 89 (0.7) | 57 (0.4) | 23 (0.2) | 61 (0.5) | 30 (0.2) | 12 (0.1) | 151 (1.2) | 48 (0.4) | 120 (0.9) |
| 2021 | 11,519 | 8,810 (76.5) | 91 (0.8) | 28 (0.2) | 573 (5.0) | 2,168 (18.8) | 14 (0.1) | 101 (0.9) | 659 (5.7) | 100 (0.9) | 186 (1.6) | 145 (1.3) | 103 (0.9) | 53 (0.5) | 13 (0.1) | 68 (0.6) | 30 (0.3) | 6 (0.1) | 142 (1.2) | 57 (0.5) | 146 (1.3) |

Note1: Cases having multiple organs are counted independently.

Note2: Numbers in brackets indicate the proportion out of the total number of newly notified tuberculosis cases (all forms) for each sex and age group.

Table 3.2 Number and proportion of military tuberculosis by age group and sex, 2004–2021

| | | Age group total | 0–9 yrs | 10–19 yrs | 20–29 yrs | 30–39 yrs | 40–49 yrs | 50–59 yrs | 60–69 yrs | 70–79 yrs | 80 yrs+ |
|---------|-------|-----------------|----------|-----------|-----------|-----------|-----------|-----------|-----------|-----------|------------|
| year | n (%) | n (%) | n (%) | n (%) | n (%) | n (%) | n (%) | n (%) | n (%) | n (%) | n (%) |
| Total | 2004 | 617 (2.1) | 0 (0.0) | 6 (1.8) | 19 (0.8) | 22 (0.8) | 24 (1.0) | 44 (1.1) | 82 (1.8) | 199 (2.9) | 221 (3.6) |
| | 2005 | 585 (2.1) | 1 (1.3) | 3 (0.9) | 13 (0.6) | 38 (1.4) | 25 (1.1) | 41 (1.1) | 77 (1.8) | 180 (2.8) | 207 (3.2) |
| | 2006 | 616 (2.3) | 1 (1.9) | 1 (0.4) | 19 (0.9) | 24 (1.0) | 27 (1.3) | 42 (1.3) | 84 (2.2) | 173 (2.8) | 245 (3.9) |
| | 2007 | 602 (2.4) | 0 (0.0) | 2 (0.9) | 10 (0.5) | 20 (0.9) | 23 (1.2) | 26 (0.9) | 75 (2.0) | 190 (3.4) | 256 (4.0) |
| | 2008 | 570 (2.3) | 1 (1.4) | 1 (0.5) | 17 (0.9) | 18 (0.8) | 21 (1.1) | 40 (1.4) | 64 (1.7) | 162 (2.9) | 246 (3.7) |
| | 2009 | 604 (2.5) | 3 (6.4) | 2 (0.9) | 6 (0.4) | 26 (1.2) | 25 (1.4) | 38 (1.5) | 68 (1.9) | 164 (3.2) | 272 (3.9) |
| | 2010 | 598 (2.6) | 0 (0.0) | 2 (0.7) | 11 (0.7) | 20 (1.0) | 22 (1.2) | 23 (1.1) | 80 (2.2) | 139 (2.8) | 301 (4.4) |
| | 2011 | 695 (3.1) | 1 (1.9) | 2 (1.1) | 18 (1.3) | 21 (1.2) | 28 (1.5) | 27 (1.3) | 58 (1.8) | 155 (3.2) | 385 (5.3) |
| | 2012 | 608 (2.9) | 0 (0.0) | 2 (1.1) | 4 (0.3) | 10 (0.7) | 20 (1.3) | 28 (1.6) | 53 (1.8) | 147 (3.2) | 344 (4.8) |
| | 2013 | 635 (3.1) | 0 (0.0) | 4 (2.1) | 9 (0.8) | 21 (1.6) | 15 (1.0) | 23 (1.4) | 59 (2.1) | 151 (3.5) | 353 (4.8) |
| | 2014 | 642 (3.3) | 1 (3.1) | 2 (1.1) | 7 (0.6) | 15 (1.2) | 12 (0.8) | 23 (1.5) | 53 (2.0) | 133 (3.3) | 396 (5.4) |
| | 2015 | 631 (3.5) | 0 (0.0) | 2 (1.1) | 11 (1.0) | 8 (0.7) | 24 (1.8) | 17 (1.3) | 36 (1.5) | 153 (4.1) | 380 (5.4) |
| | 2016 | 633 (3.6) | 1 (2.7) | 0 (0.0) | 8 (0.6) | 16 (1.6) | 12 (1.0) | 26 (2.0) | 50 (2.3) | 135 (4.0) | 385 (5.5) |
| | 2017 | 687 (4.1) | 3 (7.3) | 3 (1.8) | 8 (0.6) | 18 (1.8) | 11 (0.9) | 24 (1.9) | 45 (2.2) | 123 (3.9) | 452 (6.7) |
| | 2018 | 616 (4.0) | 1 (3.3) | 2 (1.1) | 13 (1.0) | 11 (1.2) | 16 (1.5) | 23 (2.0) | 41 (2.4) | 120 (4.0) | 389 (6.1) |
| | 2019 | 639 (4.4) | 2 (7.4) | 2 (1.3) | 15 (1.3) | 12 (1.6) | 17 (1.7) | 21 (2.0) | 35 (2.4) | 118 (4.2) | 417 (6.9) |
| | 2020 | 653 (5.1) | 1 (2.8) | 0 (0.0) | 16 (1.6) | 15 (2.2) | 13 (1.8) | 24 (2.6) | 29 (2.3) | 116 (4.6) | 439 (8.1) |
| | 2021 | 573 (5.0) | 1 (5.3) | 0 (0.0) | 16 (1.7) | 11 (1.8) | 7 (1.1) | 19 (2.3) | 37 (3.5) | 106 (4.7) | 376 (7.4) |
| Males | 2004 | 282 (1.5) | 0 (0.0) | 2 (1.3) | 10 (0.8) | 15 (0.9) | 21 (1.3) | 32 (1.1) | 49 (1.5) | 78 (1.7) | 75 (2.1) |
| | 2005 | 269 (1.5) | 1 (2.2) | 2 (1.2) | 7 (0.6) | 24 (1.5) | 15 (1.0) | 23 (0.8) | 47 (1.5) | 83 (2.0) | 67 (1.8) |
| | 2006 | 309 (1.8) | 0 (0.0) | 1 (0.9) | 12 (1.1) | 17 (1.3) | 23 (1.6) | 34 (1.3) | 55 (2.0) | 78 (1.9) | 89 (2.4) |
| | 2007 | 250 (1.5) | 0 (0.0) | 2 (1.8) | 6 (0.6) | 13 (1.0) | 14 (1.1) | 16 (0.7) | 45 (1.7) | 76 (2.0) | 78 (2.0) |
| | 2008 | 241 (1.5) | 0 (0.0) | 1 (0.9) | 13 (1.4) | 12 (1.0) | 17 (1.4) | 26 (1.3) | 39 (1.5) | 65 (1.8) | 68 (1.8) |
| | 2009 | 211 (1.4) | 0 (0.0) | 1 (1.0) | 2 (0.2) | 18 (1.6) | 18 (1.5) | 21 (1.2) | 26 (1.0) | 57 (1.7) | 68 (1.7) |
| | 2010 | 232 (1.6) | 0 (0.0) | 2 (1.3) | 7 (0.8) | 11 (1.1) | 19 (1.6) | 14 (0.9) | 40 (1.5) | 54 (1.7) | 85 (2.1) |
| | 2011 | 283 (2.0) | 1 (4.2) | 0 (0.0) | 12 (1.6) | 14 (1.6) | 17 (1.5) | 18 (1.2) | 34 (1.5) | 66 (2.1) | 121 (2.9) |
| | 2012 | 243 (1.9) | 0 (0.0) | 1 (1.0) | 4 (0.6) | 7 (0.8) | 17 (1.7) | 22 (1.7) | 33 (1.6) | 46 (1.6) | 113 (2.8) |
| | 2013 | 234 (1.9) | 0 (0.0) | 2 (2.0) | 2 (0.3) | 14 (2.0) | 7 (0.8) | 12 (1.0) | 34 (1.7) | 52 (1.8) | 111 (2.7) |
| | 2014 | 249 (2.1) | 0 (0.0) | 1 (1.1) | 3 (0.5) | 7 (1.0) | 7 (0.8) | 9 (0.9) | 41 (2.2) | 66 (2.5) | 115 (2.8) |
| | 2015 | 231 (2.1) | 0 (0.0) | 1 (1.1) | 6 (1.0) | 7 (1.2) | 19 (2.3) | 11 (1.2) | 20 (1.2) | 65 (2.6) | 102 (2.7) |
| | 2016 | 246 (2.3) | 1 (4.8) | 0 (0.0) | 5 (0.7) | 11 (2.0) | 7 (0.9) | 14 (1.6) | 26 (1.6) | 60 (2.7) | 122 (3.2) |
| | 2017 | 264 (2.6) | 1 (3.8) | 2 (1.9) | 3 (0.4) | 11 (2.1) | 5 (0.7) | 17 (1.9) | 27 (1.9) | 60 (2.8) | 138 (3.7) |
| | 2018 | 258 (2.8) | 0 (0.0) | 2 (2.0) | 9 (1.2) | 9 (1.9) | 11 (1.7) | 18 (2.3) | 26 (2.2) | 56 (2.9) | 127 (3.7) |
| | 2019 | 244 (2.9) | 1 (8.3) | 1 (1.2) | 12 (1.7) | 6 (1.4) | 14 (2.4) | 15 (2.1) | 16 (1.6) | 62 (3.3) | 117 (3.7) |
| | 2020 | 256 (3.4) | 1 (5.0) | 0 (0.0) | 7 (1.3) | 12 (3.5) | 9 (2.1) | 16 (2.6) | 17 (1.9) | 52 (3.1) | 142 (4.8) |
| | 2021 | 238 (3.5) | 0 (0.0) | 0 (0.0) | 10 (2.0) | 6 (2.1) | 4 (1.1) | 11 (2.0) | 23 (3.0) | 57 (3.8) | 127 (4.7) |
| Females | 2004 | 335 (3.2) | 0 (0.0) | 4 (2.2) | 9 (0.7) | 7 (0.6) | 3 (0.4) | 12 (1.2) | 33 (2.4) | 121 (5.3) | 146 (5.5) |
| | 2005 | 316 (3.1) | 0 (0.0) | 1 (0.6) | 6 (0.5) | 14 (1.3) | 10 (1.5) | 18 (2.0) | 30 (2.5) | 97 (4.5) | 140 (5.3) |
| | 2006 | 307 (3.3) | 1 (4.0) | 0 (0.0) | 7 (0.7) | 7 (0.7) | 4 (0.6) | 8 (1.0) | 29 (2.8) | 95 (4.6) | 156 (6.1) |
| | 2007 | 352 (3.9) | 0 (0.0) | 0 (0.0) | 4 (0.4) | 7 (0.7) | 9 (1.4) | 10 (1.4) | 30 (2.9) | 114 (5.9) | 178 (6.7) |
| | 2008 | 329 (3.6) | 1 (3.3) | 0 (0.0) | 4 (0.4) | 6 (0.6) | 4 (0.6) | 14 (2.0) | 25 (2.4) | 97 (5.2) | 178 (6.4) |
| | 2009 | 393 (4.3) | 3 (10.7) | 1 (0.8) | 4 (0.5) | 8 (0.8) | 7 (1.0) | 17 (2.3) | 42 (4.2) | 107 (5.9) | 204 (6.7) |
| | 2010 | 366 (4.2) | 0 (0.0) | 0 (0.0) | 4 (0.6) | 9 (1.0) | 3 (0.5) | 9 (1.5) | 40 (4.0) | 85 (4.9) | 216 (7.3) |
| | 2011 | 412 (4.7) | 0 (0.0) | 2 (2.0) | 6 (0.9) | 7 (0.8) | 11 (1.7) | 9 (1.5) | 24 (2.5) | 89 (5.2) | 264 (8.5) |
| | 2012 | 365 (4.4) | 0 (0.0) | 1 (1.2) | 0 (0.0) | 3 (0.4) | 3 (0.5) | 6 (1.2) | 20 (2.3) | 101 (6.1) | 231 (7.1) |
| | 2013 | 401 (5.0) | 0 (0.0) | 2 (2.2) | 7 (1.2) | 7 (1.2) | 8 (1.4) | 11 (2.1) | 25 (3.0) | 99 (6.4) | 242 (7.4) |
| | 2014 | 393 (5.2) | 1 (6.3) | 1 (1.1) | 4 (0.7) | 8 (1.4) | 5 (0.9) | 14 (2.8) | 12 (1.6) | 67 (4.9) | 281 (8.7) |
| | 2015 | 400 (5.6) | 0 (0.0) | 1 (1.2) | 5 (1.0) | 1 (0.2) | 5 (1.0) | 6 (1.4) | 16 (2.5) | 88 (6.8) | 278 (8.8) |
| | 2016 | 387 (5.5) | 0 (0.0) | 0 (0.0) | 3 (0.6) | 5 (1.1) | 5 (1.0) | 12 (2.9) | 24 (3.8) | 75 (6.4) | 263 (8.1) |
| | 2017 | 423 (6.4) | 2 (13.3) | 1 (1.6) | 5 (0.9) | 7 (1.5) | 6 (1.3) | 7 (1.8) | 18 (3.1) | 63 (5.9) | 314 (10.4) |
| | 2018 | 358 (5.7) | 1 (10.0) | 0 (0.0) | 4 (0.7) | 2 (0.5) | 5 (1.3) | 5 (1.3) | 15 (3.0) | 64 (6.0) | 262 (8.9) |
| | 2019 | 395 (6.7) | 1 (6.7) | 1 (1.5) | 3 (0.6) | 6 (1.7) | 3 (0.7) | 6 (1.7) | 19 (4.1) | 56 (6.1) | 300 (10.4) |
| | 2020 | 397 (7.6) | 0 (0.0) | 0 (0.0) | 9 (1.9) | 3 (0.9) | 4 (1.3) | 8 (2.5) | 12 (3.3) | 64 (7.3) | 297 (12.0) |
| | 2021 | 335 (7.0) | 1 (10.0) | 0 (0.0) | 6 (1.4) | 5 (1.6) | 3 (1.0) | 8 (2.7) | 14 (4.5) | 49 (6.7) | 249 (10.5) |

Note1: Cases having multiple organs are counted independently.

Note2: % indicate proportion out of the total number of newly notified tuberculosis cases for each age group.

【Foreign born】

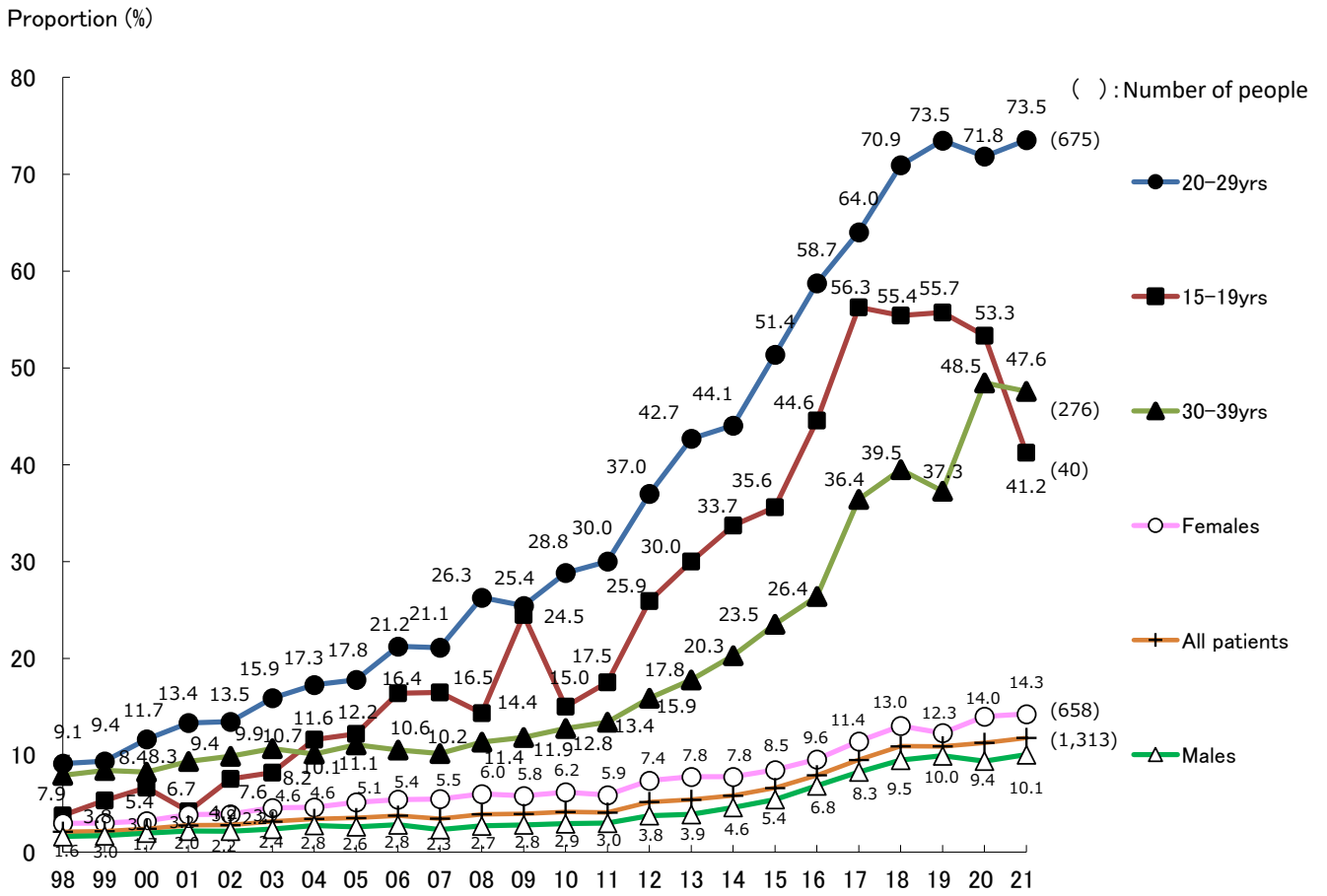


Fig. 3 Annual trend of proportion of foreign-borns among newly notified tuberculosis patients, by sex and age group, from 1998 to 2021
Those whose country of birth is unknown are excluded from the numerator.

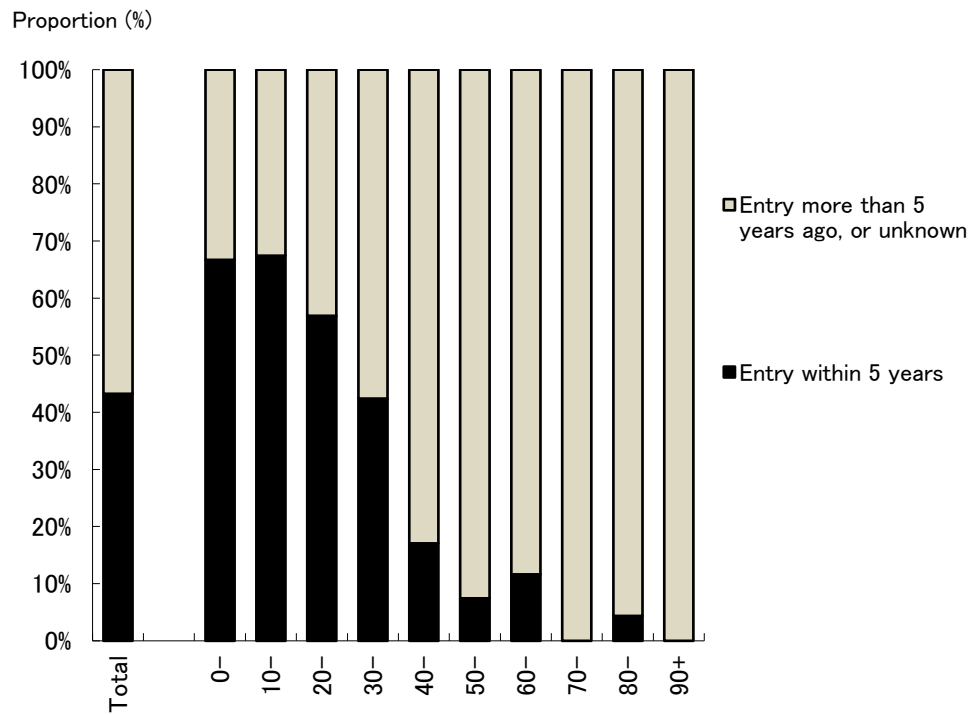


Fig. 4 Proportion of foreign-born tuberculosis patients, by age group and time of entry to Japan, in 2021

Table 4.1 Annual trend of newly notified tuberculosis patients by nationality or country of birth, and by sex, from 1998 to 2021

| Year | Number of newly notified tuberculosis patients, all forms | Born in Japan | Foreign nationalities or Foreign borns (*1) | Nationalities or country of birth unknown | Proportion of foreign borns (%) (*2) | Sex (*3) | | Ratio of Females to Males |
|------|---|---------------|---|---|--------------------------------------|----------|---------|---------------------------|
| | | | | | | Males | Females | |
| 1998 | 41,033 | 34,382 | 739 | 5,912 | 2.1 | 365 | 374 | 1.0 |
| 1999 | 43,818 | 37,094 | 821 | 5,903 | 2.2 | 415 | 406 | 1.0 |
| 2000 | 39,384 | 33,720 | 837 | 4,827 | 2.4 | 436 | 401 | 0.9 |
| 2001 | 35,489 | 30,305 | 866 | 4,318 | 2.8 | 442 | 424 | 1.0 |
| 2002 | 32,828 | 28,667 | 824 | 3,337 | 2.8 | 411 | 413 | 1.0 |
| 2003 | 31,638 | 27,665 | 906 | 3,067 | 3.2 | 433 | 473 | 1.1 |
| 2004 | 29,736 | 26,205 | 931 | 2,600 | 3.4 | 479 | 452 | 0.9 |
| 2005 | 28,319 | 25,247 | 923 | 2,149 | 3.5 | 438 | 485 | 1.1 |
| 2006 | 26,384 | 23,505 | 920 | 1,959 | 3.8 | 444 | 476 | 1.1 |
| 2007 | 25,311 | 23,451 | 842 | 1,018 | 3.5 | 364 | 478 | 1.3 |
| 2008 | 24,760 | 23,163 | 945 | 652 | 3.9 | 416 | 529 | 1.3 |
| 2009 | 24,170 | 22,808 | 938 | 424 | 4.0 | 414 | 524 | 1.3 |
| 2010 | 23,261 | 21,976 | 952 | 333 | 4.2 | 424 | 528 | 1.2 |
| 2011 | 22,681 | 21,372 | 921 | 388 | 4.1 | 416 | 505 | 1.2 |
| 2012 | 21,283 | 19,555 | 1,069 | 659 | 5.2 | 474 | 595 | 1.3 |
| 2013 | 20,495 | 18,589 | 1,064 | 842 | 5.4 | 468 | 596 | 1.3 |
| 2014 | 19,615 | 17,727 | 1,101 | 787 | 5.8 | 531 | 570 | 1.1 |
| 2015 | 18,280 | 16,396 | 1,164 | 720 | 6.6 | 581 | 583 | 1.0 |
| 2016 | 17,625 | 15,504 | 1,338 | 783 | 7.9 | 693 | 645 | 0.9 |
| 2017 | 16,789 | 14,533 | 1,530 | 726 | 9.5 | 804 | 726 | 0.9 |
| 2018 | 15,590 | 13,570 | 1,667 | 353 | 10.9 | 860 | 807 | 0.9 |
| 2019 | 14,460 | 12,567 | 1,541 | 352 | 10.9 | 829 | 712 | 0.9 |
| 2020 | 12,739 | 11,080 | 1,411 | 248 | 11.3 | 692 | 719 | 1.0 |
| 2021 | 11,519 | 9,809 | 1,313 | 397 | 11.8 | 655 | 658 | 1.0 |

*1: Number of tuberculosis patients with foreign nationalities until 2011, number of foreign-born patients afterwards.

*2: Proportion of Tuberculosis patients with foreign nationalities until 2011, proportion of foreign-born patients afterwards, excluding those of unknown nationality or country of birth.

*3: Sex distribution among foreign nationalities or foreign-borns.

Table 4.2 Annual trend of foreign-borns by age group, 1998–2021

| year | Age group | 0–9 yrs | | 10–19 yrs | | 20–29 yrs | | 30–39 yrs | | 40–49 yrs | | 50–59 yrs | | 60–69 yrs | | 70–79 yrs | | 80 yrs+ | | |
|------|-----------|---------|----|-----------|----|-----------|-----|-----------|-----|-----------|-----|-----------|----|-----------|----|-----------|----|---------|----|-------|
| | | Total | n | (%) | n | (%) | n | (%) | n | (%) | n | (%) | n | (%) | n | (%) | n | (%) | n | (%) |
| 1998 | | 739 | 6 | (0.8) | 20 | (2.7) | 300 | (40.6) | 215 | (29.1) | 83 | (11.2) | 44 | (6.0) | 23 | (3.1) | 29 | (3.9) | 19 | (2.6) |
| 1999 | | 821 | 11 | (1.3) | 27 | (3.3) | 319 | (38.9) | 241 | (29.4) | 89 | (10.8) | 54 | (6.6) | 27 | (3.3) | 35 | (4.3) | 18 | (2.2) |
| 2000 | | 837 | 14 | (1.7) | 26 | (3.1) | 357 | (42.7) | 235 | (28.1) | 92 | (11.0) | 49 | (5.9) | 23 | (2.7) | 27 | (3.2) | 14 | (1.7) |
| 2001 | | 866 | 4 | (0.5) | 17 | (2.0) | 361 | (41.7) | 249 | (28.8) | 110 | (12.7) | 55 | (6.4) | 27 | (3.1) | 25 | (2.9) | 18 | (2.1) |
| 2002 | | 824 | 5 | (0.6) | 24 | (2.9) | 345 | (41.9) | 249 | (30.2) | 81 | (9.8) | 47 | (5.7) | 26 | (3.2) | 24 | (2.9) | 23 | (2.8) |
| 2003 | | 906 | 9 | (1.0) | 25 | (2.8) | 399 | (44.0) | 268 | (29.6) | 98 | (10.8) | 38 | (4.2) | 22 | (2.4) | 27 | (3.0) | 20 | (2.2) |
| 2004 | | 931 | 4 | (0.4) | 32 | (3.4) | 402 | (43.2) | 250 | (26.9) | 107 | (11.5) | 59 | (6.3) | 28 | (3.0) | 27 | (2.9) | 22 | (2.4) |
| 2005 | | 923 | 5 | (0.5) | 37 | (4.0) | 378 | (41.0) | 273 | (29.6) | 105 | (11.4) | 62 | (6.7) | 26 | (2.8) | 16 | (1.7) | 21 | (2.3) |
| 2006 | | 920 | 5 | (0.5) | 34 | (3.7) | 409 | (44.5) | 234 | (25.4) | 113 | (12.3) | 59 | (6.4) | 35 | (3.8) | 11 | (1.2) | 20 | (2.2) |
| 2007 | | 842 | 6 | (0.7) | 35 | (4.2) | 390 | (46.3) | 224 | (26.6) | 102 | (12.1) | 43 | (5.1) | 15 | (1.8) | 12 | (1.4) | 15 | (1.8) |
| 2008 | | 945 | 4 | (0.4) | 27 | (2.9) | 468 | (49.5) | 237 | (25.1) | 114 | (12.1) | 41 | (4.3) | 25 | (2.6) | 10 | (1.1) | 19 | (2.0) |
| 2009 | | 938 | 2 | (0.2) | 50 | (5.3) | 427 | (45.5) | 243 | (25.9) | 103 | (11.0) | 41 | (4.4) | 30 | (3.2) | 20 | (2.1) | 22 | (2.3) |
| 2010 | | 952 | 5 | (0.5) | 41 | (4.3) | 438 | (46.0) | 242 | (25.4) | 114 | (12.0) | 39 | (4.1) | 35 | (3.7) | 18 | (1.9) | 20 | (2.1) |
| 2011 | | 921 | 5 | (0.5) | 30 | (3.3) | 419 | (45.5) | 226 | (24.5) | 126 | (13.7) | 53 | (5.8) | 20 | (2.2) | 19 | (2.1) | 23 | (2.5) |
| 2012 | | 1,069 | 4 | (0.4) | 45 | (4.2) | 468 | (43.8) | 237 | (22.2) | 181 | (16.9) | 63 | (5.9) | 33 | (3.1) | 17 | (1.6) | 21 | (2.0) |
| 2013 | | 1,064 | 3 | (0.3) | 52 | (4.9) | 494 | (46.4) | 225 | (21.1) | 147 | (13.8) | 65 | (6.1) | 30 | (2.8) | 25 | (2.3) | 23 | (2.2) |
| 2014 | | 1,101 | 5 | (0.5) | 59 | (5.4) | 511 | (46.4) | 243 | (22.1) | 151 | (13.7) | 71 | (6.4) | 26 | (2.4) | 16 | (1.5) | 19 | (1.7) |
| 2015 | | 1,164 | 3 | (0.3) | 63 | (5.4) | 565 | (48.5) | 252 | (21.6) | 134 | (11.5) | 74 | (6.4) | 27 | (2.3) | 19 | (1.6) | 27 | (2.3) |
| 2016 | | 1,338 | 5 | (0.4) | 89 | (6.7) | 712 | (53.2) | 258 | (19.3) | 139 | (10.4) | 66 | (4.9) | 33 | (2.5) | 15 | (1.1) | 21 | (1.6) |
| 2017 | | 1,530 | 5 | (0.3) | 87 | (5.7) | 774 | (50.6) | 349 | (22.8) | 143 | (9.3) | 89 | (5.8) | 48 | (3.1) | 17 | (1.1) | 18 | (1.2) |
| 2018 | | 1,667 | 4 | (0.2) | 95 | (5.7) | 896 | (53.7) | 344 | (20.6) | 151 | (9.1) | 91 | (5.5) | 35 | (2.1) | 23 | (1.4) | 28 | (1.7) |
| 2019 | | 1,541 | 7 | (0.5) | 81 | (5.3) | 851 | (55.2) | 283 | (18.4) | 147 | (9.5) | 76 | (4.9) | 41 | (2.7) | 27 | (1.8) | 28 | (1.8) |
| 2020 | | 1,411 | 6 | (0.4) | 43 | (3.0) | 732 | (51.9) | 330 | (23.4) | 141 | (10.0) | 83 | (5.9) | 44 | (3.1) | 19 | (1.3) | 13 | (0.9) |
| 2021 | | 1,313 | 3 | (0.2) | 43 | (3.3) | 675 | (51.4) | 276 | (21.0) | 135 | (10.3) | 94 | (7.2) | 43 | (3.3) | 16 | (1.2) | 28 | (2.1) |

Note1: % indicate proportion out of the total number of newly notified foreign-born tuberculosis cases for each age group.

Note2: “ Foreign nationalities ” until 2011, “ Foreign-born ” since 2012.

Table 5 Number and proportion of foreign-born tuberculosis patients by country of birth and time of entry to Japan, 2021

| Total | Drug resistance | | | | | | | | Entry within 5 years | Drug resistance | | | | | | | | | | | |
|-------------------|-----------------|---------|-----|--------------------|--------------------|-----------------|-------|---------|----------------------|-----------------|--------------------|--------------------|-----------------|---|---------|----|---------|----|---------|----|---------|
| | n (%) | | MDR | Any INH resistance | Any RFP resistance | Any resistance* | n (%) | | | MDR | Any INH resistance | Any RFP resistance | Any resistance* | | | | | | | | |
| Total | 1,313 | (100.0) | 21 | (100.0) | 57 | (100.0) | 26 | (100.0) | 98 | (100.0) | Total | 568 | (100.0) | 8 | (100.0) | 16 | (100.0) | 12 | (100.0) | 38 | (100.0) |
| Philippines | 284 | (21.6) | 2 | (9.5) | 10 | (17.5) | 3 | (11.5) | 15 | (15.3) | Vietnam | 158 | (27.8) | 2 | (25.0) | 4 | (25.0) | 3 | (25.0) | 15 | (39.5) |
| Vietnam | 263 | (20.0) | 3 | (14.3) | 11 | (19.3) | 4 | (15.4) | 29 | (29.6) | Philippines | 91 | (16.0) | | | 1 | (6.3) | 1 | (8.3) | 3 | (7.9) |
| China | 152 | (11.6) | 7 | (33.3) | 14 | (24.6) | 8 | (30.8) | 21 | (21.4) | Indonesia | 87 | (15.3) | | | 2 | (12.5) | 1 | (8.3) | 3 | (7.9) |
| Indonesia | 134 | (10.2) | | | 3 | (5.3) | 1 | (3.8) | 4 | (4.1) | China | 66 | (11.6) | 4 | (50.0) | 5 | (31.3) | 5 | (41.7) | 10 | (26.3) |
| Nepal | 113 | (8.6) | | | 3 | (5.3) | | | 5 | (5.1) | Nepal | 51 | (9.0) | | | | | | | | |
| Myanmar | 85 | (6.5) | 3 | (14.3) | 6 | (10.5) | 3 | (11.5) | 6 | (6.1) | Myanmar | 40 | (7.0) | 1 | (12.5) | 2 | (12.5) | 1 | (8.3) | 2 | (5.3) |
| India | 33 | (2.5) | | | | | | | | | India | 19 | (3.3) | | | | | | | | |
| Republic of Korea | 27 | (2.1) | | | | | | | | | Mongolia | 10 | (1.8) | 1 | (12.5) | 2 | (12.5) | 1 | (8.3) | 3 | (7.9) |
| Thailand | 22 | (1.7) | 1 | (4.8) | 1 | (1.8) | 2 | (7.7) | 3 | (3.1) | | | | | | | | | | | |
| Cambodia | 16 | (1.2) | | | | | | | 3 | (3.1) | | | | | | | | | | | |
| Mongolia | 16 | (1.2) | 2 | (9.5) | 3 | (5.3) | 2 | (7.7) | 5 | (5.1) | | | | | | | | | | | |
| Brazil | 13 | (1.0) | | | | | | | | | | | | | | | | | | | |
| Pakistan | 13 | (1.0) | | | | | | | 1 | (1.0) | | | | | | | | | | | |
| Peru | 11 | (0.8) | | | 2 | (3.5) | | | 2 | (2.0) | | | | | | | | | | | |
| Others | 56 | (4.3) | 1 | (4.8) | 1 | (1.8) | 1 | (3.8) | 1 | (1.0) | Others | 37 | (6.5) | | | | | | | 2 | (5.3) |
| Unknown | 75 | (5.7) | 2 | (9.5) | 3 | (5.3) | 2 | (7.7) | 3 | (3.1) | Unknown | 9 | (1.6) | | | | | | | | |

Only those countries with more than ten tuberculosis cases are listed.

MDR : Multi-drug resistant, i.e., resistant to at least INH and RFP INH: isoniazid RFP: rifampicin

*: resistant to either INH, RFP, SM, or EB

| Entry more than 5 years ago, or unknown | Drug resistance | | | | | | | | | | | |
|---|-----------------|---------|-----|--------------------|--------------------|-----------------|-------|---------|-----|--------------------|--------------------|-----------------|
| | n (%) | | MDR | Any INH resistance | Any RFP resistance | Any resistance* | n (%) | | MDR | Any INH resistance | Any RFP resistance | Any resistance* |
| Total | 745 | (100.0) | 13 | (100.0) | 41 | (100.0) | 14 | (100.0) | 60 | (100.0) | | |
| Philippines | 193 | (25.9) | 2 | (15.4) | 9 | (22.0) | 2 | (14.3) | 12 | (20.0) | | |
| Vietnam | 105 | (14.1) | 1 | (7.7) | 7 | (17.1) | 1 | (7.1) | 14 | (23.3) | | |
| China | 86 | (11.5) | 3 | (23.1) | 9 | (22.0) | 3 | (21.4) | 11 | (18.3) | | |
| Nepal | 62 | (8.3) | | | 3 | (7.3) | | | 5 | (8.3) | | |
| Indonesia | 47 | (6.3) | | | 1 | (2.4) | | | 1 | (1.7) | | |
| Myanmar | 45 | (6.0) | 2 | (15.4) | 4 | (9.8) | 2 | (14.3) | 4 | (6.7) | | |
| Republic of Korea | 24 | (3.2) | | | | | | | | | | |
| Thailand | 16 | (2.1) | 1 | (7.7) | 1 | (2.4) | 2 | (14.3) | 2 | (3.3) | | |
| India | 14 | (1.9) | | | | | | | | | | |
| Brazil | 12 | (1.6) | | | | | | | | | | |
| Cambodia | 11 | (1.5) | | | | | | | 2 | (3.3) | | |
| Peru | 11 | (1.5) | | | 2 | (4.9) | | | 2 | (3.3) | | |
| Others | 53 | (7.1) | 2 | (15.4) | 2 | (4.9) | 2 | (14.3) | 4 | (6.7) | | |
| Unknown | 66 | (8.9) | 2 | (15.4) | 3 | (7.3) | 2 | (14.3) | 3 | (5.0) | | |

Table 6 Occupation of foreign-born tuberculosis patients by sex and age group, in Japan, in 2021

| Age group | Total | Service trade workers | Health care workers | Teachers / Nursery staff | Infants / Children | Students | Other regular employee s | Other temporar y/day laborer | Other self- employed | Houseke epers | Unemplo -yed / Others | Unknow n |
|-----------|-------------|-----------------------------|---------------------------|-----------------------------------|-----------------------|----------|-----------------------------------|---------------------------------------|----------------------------|------------------|-----------------------------|-------------|
| | (%) | (%) | (%) | (%) | (%) | (%) | (%) | (%) | (%) | (%) | (%) | (%) |
| Total | 1,313 (100) | 43 (3) | 55 (4) | 10 (1) | 6 (0) | 201 (15) | 538 (41) | 109 (8) | 27 (2) | 18 (1) | 266 (20) | 40 (3) |
| Males | 655 (100) | 21 (3) | 11 (2) | 3 (0) | 3 (0) | 105 (16) | 324 (49) | 44 (7) | 14 (2) | - | 113 (17) | 17 (3) |
| Females | 658 (100) | 22 (3) | 44 (7) | 7 (1) | 3 (0) | 96 (15) | 214 (33) | 65 (10) | 13 (2) | 18 (3) | 153 (23) | 23 (3) |
| 0-14 | 6 (100) | - | - | - | 6 (100) | - | - | - | - | - | - | - |
| 15-19 | 40 (100) | - | 2 (5) | - | - | 27 (68) | 6 (15) | 1 (3) | - | - | 4 (10) | - |
| 20-24 | 328 (100) | 1 (0) | 14 (4) | 2 (1) | - | 103 (31) | 119 (36) | 25 (8) | 1 (0) | - | 51 (16) | 12 (4) |
| 25-29 | 347 (100) | 6 (2) | 19 (5) | 2 (1) | - | 55 (16) | 172 (50) | 22 (6) | 3 (1) | 4 (1) | 54 (16) | 10 (3) |
| 30-34 | 179 (100) | 11 (6) | 9 (5) | 2 (1) | - | 11 (6) | 96 (54) | 16 (9) | 2 (1) | 4 (2) | 25 (14) | 3 (2) |
| 35-39 | 97 (100) | 6 (6) | 4 (4) | 1 (1) | - | 4 (4) | 46 (47) | 7 (7) | 4 (4) | 2 (2) | 21 (22) | 2 (2) |
| 40-44 | 70 (100) | 5 (7) | 2 (3) | 1 (1) | - | - | 23 (33) | 17 (24) | 5 (7) | 1 (1) | 12 (17) | 4 (6) |
| 45-49 | 65 (100) | 7 (11) | 1 (2) | - | - | 1 (2) | 31 (48) | 8 (12) | 3 (5) | 1 (2) | 12 (18) | 1 (2) |
| 50-54 | 62 (100) | 3 (5) | - | 2 (3) | - | - | 21 (34) | 9 (15) | 3 (5) | 5 (8) | 15 (24) | 4 (6) |
| 55-59 | 32 (100) | 2 (6) | 3 (9) | - | - | - | 9 (28) | 1 (3) | 3 (9) | - | 12 (38) | 2 (6) |
| 60+ | 87 (100) | 2 (2) | 1 (1) | - | - | - | 15 (17) | 3 (3) | 3 (3) | 1 (1) | 60 (69) | 2 (2) |

Previous table Trend of newly notified foreign nationals with TB by year and age group, 1998–2021

| Year | All foreigners | Age group | | | | | | | Percentage of 20–29 yrs in total |
|------|----------------|-----------|-------|-------|-------|-------|-------|-----|----------------------------------|
| | | 0–14 | 15–19 | 20–29 | 30–39 | 40–49 | 50–59 | 60+ | |
| 1998 | 739 | 11 | 15 | 300 | 215 | 83 | 44 | 71 | 40.6 |
| 1999 | 821 | 13 | 25 | 319 | 241 | 89 | 54 | 80 | 38.9 |
| 2000 | 837 | 16 | 24 | 357 | 235 | 92 | 49 | 64 | 42.7 |
| 2001 | 866 | 6 | 15 | 361 | 249 | 110 | 55 | 70 | 41.7 |
| 2002 | 824 | 6 | 23 | 345 | 249 | 81 | 47 | 73 | 41.9 |
| 2003 | 906 | 12 | 22 | 399 | 268 | 98 | 38 | 69 | 44.0 |
| 2004 | 931 | 6 | 30 | 402 | 250 | 107 | 59 | 77 | 43.2 |
| 2005 | 923 | 9 | 33 | 378 | 273 | 105 | 62 | 63 | 41.0 |
| 2006 | 920 | 6 | 33 | 409 | 234 | 113 | 59 | 66 | 44.5 |
| 2007 | 842 | 9 | 32 | 390 | 224 | 102 | 43 | 42 | 46.3 |
| 2008 | 945 | 5 | 26 | 468 | 237 | 114 | 41 | 54 | 49.5 |
| 2009 | 938 | 3 | 49 | 427 | 243 | 103 | 41 | 72 | 45.5 |
| 2010 | 952 | 9 | 37 | 438 | 242 | 114 | 39 | 73 | 46.0 |
| 2011 | 921 | 8 | 27 | 419 | 226 | 126 | 53 | 62 | 45.5 |
| 2012 | 1,069 | 7 | 42 | 468 | 237 | 181 | 63 | 71 | 43.8 |
| 2013 | 1,064 | 7 | 48 | 494 | 225 | 147 | 65 | 78 | 46.4 |
| 2014 | 1,101 | 8 | 56 | 511 | 243 | 151 | 71 | 61 | 46.4 |
| 2015 | 1,164 | 9 | 57 | 565 | 252 | 134 | 74 | 73 | 48.5 |
| 2016 | 1,338 | 12 | 82 | 712 | 258 | 139 | 66 | 69 | 53.2 |
| 2017 | 1,530 | 11 | 81 | 774 | 349 | 143 | 89 | 83 | 50.6 |
| 2018 | 1,667 | 12 | 87 | 896 | 344 | 151 | 91 | 86 | 53.7 |
| 2019 | 1,541 | 10 | 78 | 851 | 283 | 147 | 76 | 96 | 55.2 |
| 2020 | 1,411 | 9 | 40 | 732 | 330 | 141 | 83 | 76 | 51.9 |
| 2021 | 1,313 | 6 | 40 | 675 | 276 | 135 | 94 | 87 | 51.4 |

Number of tuberculosis patients with foreign nationalities until 2011, number of foreign-born patients afterwards.

Previous table Distribution of foreign nationals with tuberculosis by prefecture and designated city, 2021

| | Newly notified patients | Foreign born | Proportion (%) |
|-----------------|-------------------------|--------------|----------------|
| Japan | 11,519 | 1,313 | 11.4 |
| Gunma | 123 | 34 | 27.6 |
| Fukuoka city | 138 | 33 | 23.9 |
| Shiga | 117 | 26 | 22.2 |
| Ibaraki | 221 | 46 | 20.8 |
| Aichi | 544 | 107 | 19.7 |
| Hiroshima | 153 | 28 | 18.3 |
| Kagawa | 83 | 15 | 18.1 |
| Shizuoka | 155 | 28 | 18.1 |
| Mie | 148 | 26 | 17.6 |
| Yamanashi | 35 | 6 | 17.1 |
| Shizuoka city | 63 | 10 | 15.9 |
| Nagoya city | 336 | 52 | 15.5 |
| Gifu | 214 | 33 | 15.4 |
| Tochigi | 151 | 22 | 14.6 |
| Yamaguchi | 119 | 16 | 13.4 |
| Tokyo | 1429 | 192 | 13.4 |
| Ishikawa | 97 | 13 | 13.4 |
| Saitama | 509 | 66 | 13.0 |
| Chiba | 459 | 58 | 12.6 |
| Hamamatsu city | 73 | 9 | 12.3 |
| Fukui | 51 | 6 | 11.8 |
| Chiba city | 94 | 11 | 11.7 |
| Yokohama city | 335 | 39 | 11.6 |
| Kumamoto | 80 | 9 | 11.3 |
| Ehime | 110 | 12 | 10.9 |
| Kawasaki city | 138 | 15 | 10.9 |
| Toyama | 84 | 9 | 10.7 |
| Miyagi | 66 | 7 | 10.6 |
| Tottori | 38 | 4 | 10.5 |
| Saitama city | 107 | 11 | 10.3 |
| Niigata | 99 | 10 | 10.1 |
| Nara | 121 | 12 | 9.9 |
| Okayama city | 81 | 8 | 9.9 |
| Fukuoka | 255 | 25 | 9.8 |
| Aomori | 105 | 10 | 9.5 |
| Osaka city | 512 | 48 | 9.4 |
| Okinawa | 175 | 16 | 9.1 |
| Miyazaki | 88 | 8 | 9.1 |
| Okayama | 102 | 9 | 8.8 |
| Kanagawa | 228 | 20 | 8.8 |
| Kumamoto city | 46 | 4 | 8.7 |
| Nagano | 104 | 9 | 8.7 |
| Sagamihara city | 47 | 4 | 8.5 |
| Kouchi | 48 | 4 | 8.3 |
| Saga | 72 | 6 | 8.3 |
| Sendai city | 86 | 7 | 8.1 |
| Hiroshima city | 86 | 7 | 8.1 |
| Kyoto city | 164 | 13 | 7.9 |
| Kyoto | 107 | 7 | 6.5 |
| Akita | 46 | 3 | 6.5 |
| Oita | 117 | 7 | 6.0 |
| Kobe city | 201 | 12 | 6.0 |

Those prefectures and designated cities with 6% or more tuberculosis cases with foreign nationals are listed.

The figures of prefectures do not include those cases registered to designated cities in the respective prefecture, if applicable.

E.g., the figure of Kanagawa prefecture does not include those of Yokohama and Kawasaki cities.