

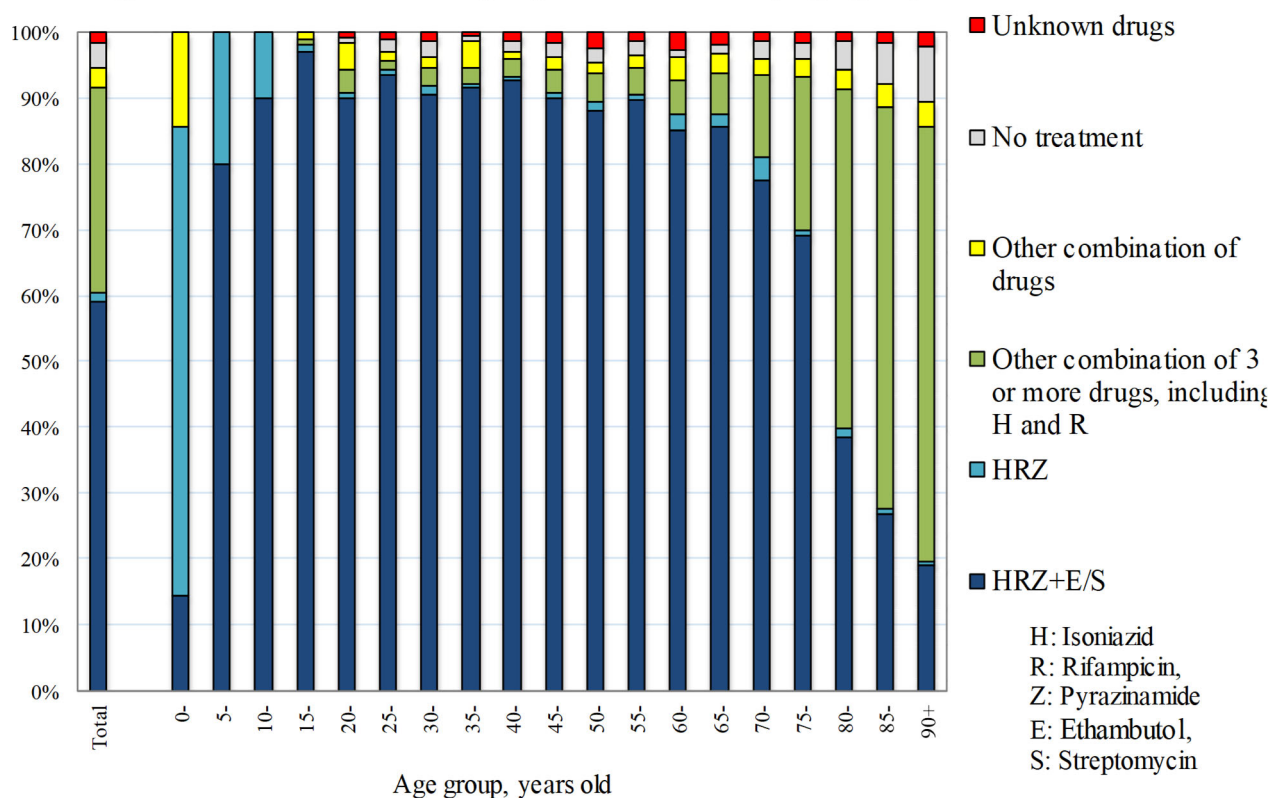
【Treatment 1】

Table 1 Number of patients with TB on re-treatment, by year when previous TB treatment was initiated and age group, 2021

Year when previous TB treatment initiated	Total	Age group (years)								Previous TB treatment regimen unknown (re-count)
		0-19	20-29	30-39	40-49	50-59	60-69	70-79	80+	
Total	460	5	32	20	39	33	47	88	196	127
~1949	15	0	0	0	0	0	0	1	14	14
1950-59	58	0	0	0	0	0	0	8	50	32
1960-69	20	0	0	0	0	0	0	5	15	14
1970-79	16	0	0	0	0	1	3	8	4	9
1980-89	8	0	0	0	0	0	0	4	4	5
1990-99	20	0	1	3	4	1	4	4	3	9
2000-09	44	1	3	4	9	2	5	9	11	13
2010-21	279	4	28	13	26	29	35	49	95	31
2010-2021 (re-count)										
2010	9	0	1	0	3	1	1	0	3	1
2011	9	1	1	1	1	0	1	0	4	2
2012	8	0	0	0	1	1	1	1	4	3
2013	15	0	2	1	1	2	0	2	7	3
2014	12	0	0	0	1	0	3	1	7	3
2015	14	0	1	0	1	2	3	3	4	3
2016	10	0	0	1	1	0	4	1	3	1
2017	21	1	0	1	2	3	4	4	6	2
2018	34	0	4	2	3	1	5	8	11	3
2019	63	1	4	4	7	10	6	11	20	5
2020	57	0	10	2	3	6	5	12	19	1
2021	27	1	5	1	2	3	2	6	7	4

TB: tuberculosis

Fig. 1 Anti-tuberculosis drugs upon notification by age group in 2021



Previous table Number of retreatment tuberculosis patients by previous tuberculosis treatment regimen and age group, 2021

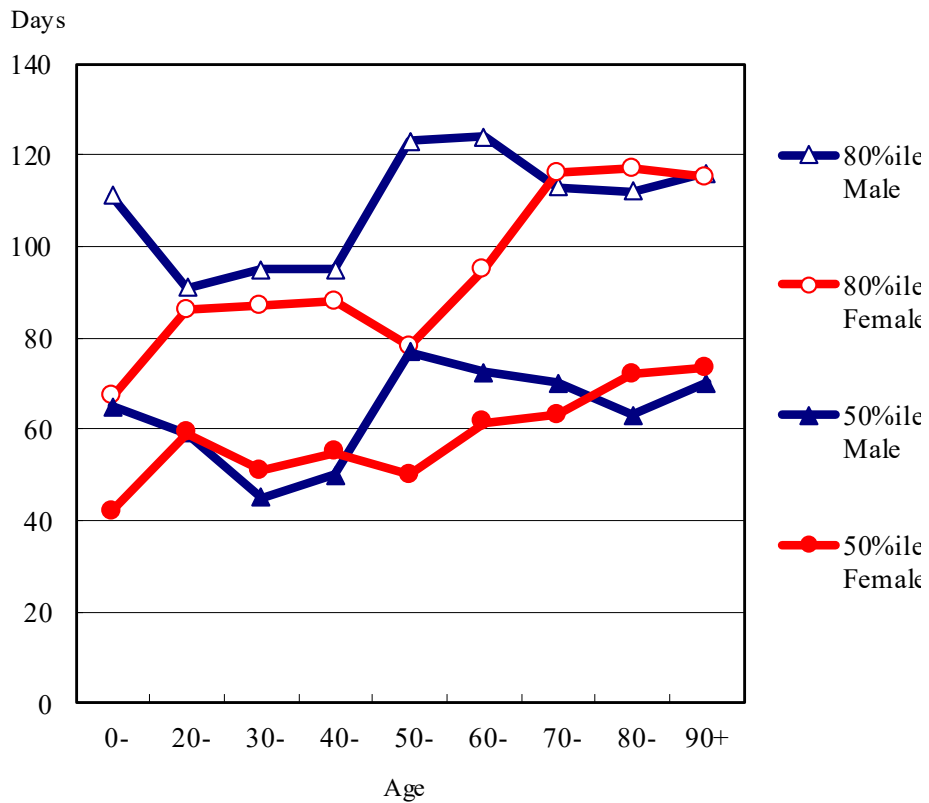
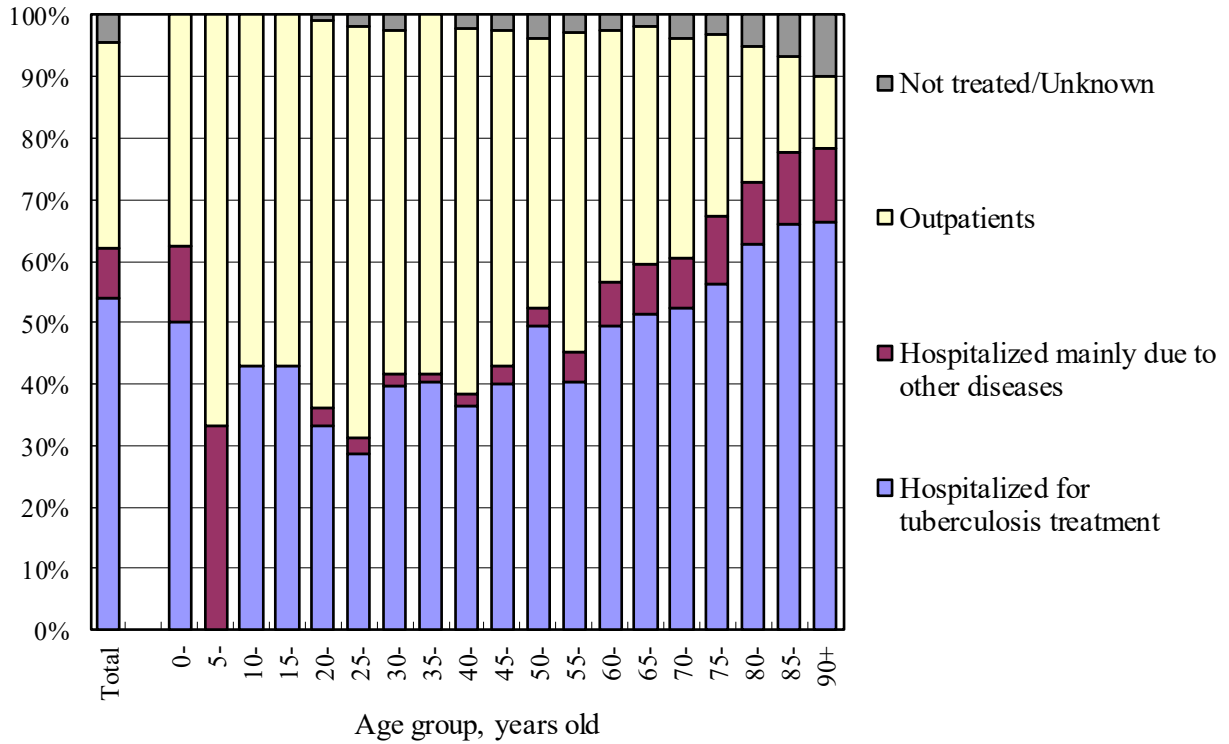
Age group	Retreatment	Previous treatment regimen				
		Regimen with HRZ	Other regimen with HR	Other regimen	LTBI treatment	Unknown
Total	460	140	76	44	73	127
0-4	1	0	0	0	1	0
5-9	0	0	0	0	0	0
10-14	0	0	0	0	0	0
15-19	4	1	0	0	2	1
20-24	14	4	2	0	6	2
25-29	18	7	3	1	4	3
30-34	12	8	1	1	2	0
35-39	8	1	1	1	3	2
40-44	13	8	1	0	2	2
45-49	26	11	1	1	5	8
50-54	15	6	1	1	3	4
55-59	18	7	2	1	6	2
60-64	25	12	3	0	4	6
65-69	22	10	7	0	1	4
70-74	46	18	4	5	8	11
75-79	42	17	4	3	6	12
80-84	64	12	8	12	8	24
85-89	71	13	16	11	9	22
90+	61	5	22	7	3	24

H : Isoniazid, R : Rifampicin, Z : Pyrazinamide

LTBI : Latent Tuberculosis Infection

【Treatment 2】

Fig.2 Proportion of the outpatients and the hospitalized patients by age group in 2021 (N=8,413)



Previous Fig. Median (50 percentile) and 80 percentile of duration of hospitalization among those hospitalized with tuberculosis and with known discharged day, new sputum-smear positive pulmonary tuberculosis patients in 2020 by sex and age group

Previous table Proportion (%) hospitalized among newly notified tuberculosis patients in 2021 by age group and patient classification

Age	Pulmonary TB								Extra-pulmonary	
	Total		Sputum smear positive		Other bacillary positive		Bacillary negative /unknown		Ht	Ho
	Ht	Ho	Ht	Ho	Ht	Ho	Ht	Ho		
Total	54.1	8.2	88.6	3.4	24.6	13.7	9.4	10.1	26.5	22.7
0-19	42.3	1.9	86.5	0.0	20.5	2.3	13.0	4.3	17.4	13.0
20-29	30.9	2.8	86.1	0.5	13.6	2.7	2.6	5.2	13.6	10.7
30-39	40.0	1.8	88.8	0.6	14.7	1.6	4.2	4.2	11.3	6.3
40-49	38.5	2.7	89.0	1.1	10.7	3.2	2.7	4.5	13.1	10.6
50-59	45.1	3.9	88.0	2.4	11.4	5.5	6.8	4.3	17.9	15.3
60-69	50.6	7.6	89.4	2.1	19.9	13.3	6.9	10.3	20.1	18.5
70-79	54.5	9.7	89.2	4.3	22.1	15.6	12.9	12.9	24.1	22.2
80-89	64.7	10.8	88.9	4.6	34.9	19.3	20.3	18.7	32.7	29.2
90+	66.2	12.0	88.0	3.7	38.0	23.7	17.2	24.1	39.1	30.0

Ht: Hospitalized for tuberculosis treatment

Ho: Hospitalized mainly due to other diseases

【Outcome】

Table 2 Patients deleted from tuberculosis registration by the end of years (in 2020 and in 2021)  
- Patients with tuberculosis patients and LTBI notified in the previous years (in 2019 and in 2020, respectively) -

	Newly notified patients with tuberculosis												Patients with LTBI (Not included in the total) (%)			
	Total (%)		Patients with pulmonary tuberculosis								Patients with extra-pulmonary tuberculosis (%)					
			Sub-total (pulmonary tuberculosis) (%)		Sputum-smear positive		Other bacteriologically positive (%)	Bacteriologically negative and others (%)								
				New (%)	Re-treatment (%)											
<b>Newly notified tuberculosis cases in 2019*</b>	<b>14,422</b>	<b>(100)</b>	<b>11,095</b>	<b>(100)</b>	<b>4,985</b>	<b>(100)</b>	<b>267</b>	<b>(100)</b>	<b>4,376</b>	<b>(100)</b>	<b>1,467</b>	<b>(100)</b>	<b>3,327</b>	<b>(100)</b>	<b>7,676</b>	<b>(100)</b>
Total number of patients deleted from tuberculosis registration by the end of 2020	4,821	(33.4)	3,731	(33.6)	1,951	(39.1)	83	(31.1)	1,368	(31.3)	329	(22.4)	1,090	(32.8)	4,370	(56.9)
No need for post-treatment follow-up	51	(0.4)	21	(0.2)	3	(0.1)	3	(1.1)	7	(0.2)	8	(0.5)	30	(0.9)	3,671	(47.8)
Died	3,767	(26.1)	2,913	(26.3)	1,634	(32.8)	68	(25.5)	1,049	(24.0)	162	(11.0)	854	(25.7)	263	(3.4)
Tuberculosis-related death	1,193	(8.3)	957	(8.6)	710	(14.2)	24	(9.0)	197	(4.5)	26	(1.8)	236	(7.1)	8	(0.1)
Other causes of death	2,574	(17.8)	1,956	(17.6)	924	(18.5)	44	(16.5)	852	(19.5)	136	(9.3)	618	(18.6)	255	(3.3)
Transfer out	911	(6.3)	724	(6.5)	284	(5.7)	10	(3.7)	287	(6.6)	143	(9.7)	187	(5.6)	332	(4.3)
Register during follow-up	56	(0.4)	44	(0.4)	22	(0.4)	2	(0.7)	15	(0.3)	5	(0.3)	12	(0.4)	34	(0.4)
Other reasons	36	(0.2)	29	(0.3)	8	(0.2)	0	(0.0)	10	(0.2)	11	(0.7)	7	(0.2)	70	(0.9)
<b>Newly notified tuberculosis cases in 2020**</b>	<b>12,641</b>	<b>(100)</b>	<b>9,413</b>	<b>(100)</b>	<b>4,406</b>	<b>(100)</b>	<b>206</b>	<b>(100)</b>	<b>3,573</b>	<b>(100)</b>	<b>1,228</b>	<b>(100)</b>	<b>3,228</b>	<b>(100)</b>	<b>5,524</b>	<b>(100)</b>
Total number of patients deleted from tuberculosis registration by the end of 2021	4,400	(34.8)	3,285	(34.9)	1,773	(40.2)	62	(30.1)	1,159	(32.4)	291	(23.7)	1,115	(34.5)	3,472	(62.9)
No need for post-treatment follow-up	59	(0.5)	24	(0.3)	3	(0.1)	1	(0.5)	6	(0.2)	14	(1.1)	35	(1.1)	2976	(53.9)
Died	3,433	(27.2)	2,572	(27.3)	1,480	(33.6)	51	(24.8)	893	(25.0)	148	(12.1)	861	(26.7)	217	(3.9)
Tuberculosis-related death	1,129	(8.9)	879	(9.3)	656	(14.9)	25	(12.1)	182	(5.1)	16	(1.3)	250	(7.7)	4	(0.1)
Other causes of death	2,304	(18.2)	1,693	(18.0)	824	(18.7)	26	(12.6)	711	(19.9)	132	(10.7)	611	(18.9)	213	(3.9)
Transfer out	822	(6.5)	629	(6.7)	264	(6.0)	6	(2.9)	244	(6.8)	115	(9.4)	193	(6.0)	194	(3.5)
Register during follow-up	62	(0.5)	46	(0.5)	21	(0.5)	3	(1.5)	13	(0.4)	9	(0.7)	16	(0.5)	38	(0.7)
Other reasons	24	(0.2)	14	(0.1)	5	(0.1)	1	(0.5)	3	(0.1)	5	(0.4)	10	(0.3)	47	(0.9)

\* Based on the annual report database in 2020. \*\* Based on the annual report database in 2021.

LTBI : Latent Tuberculosis Infection

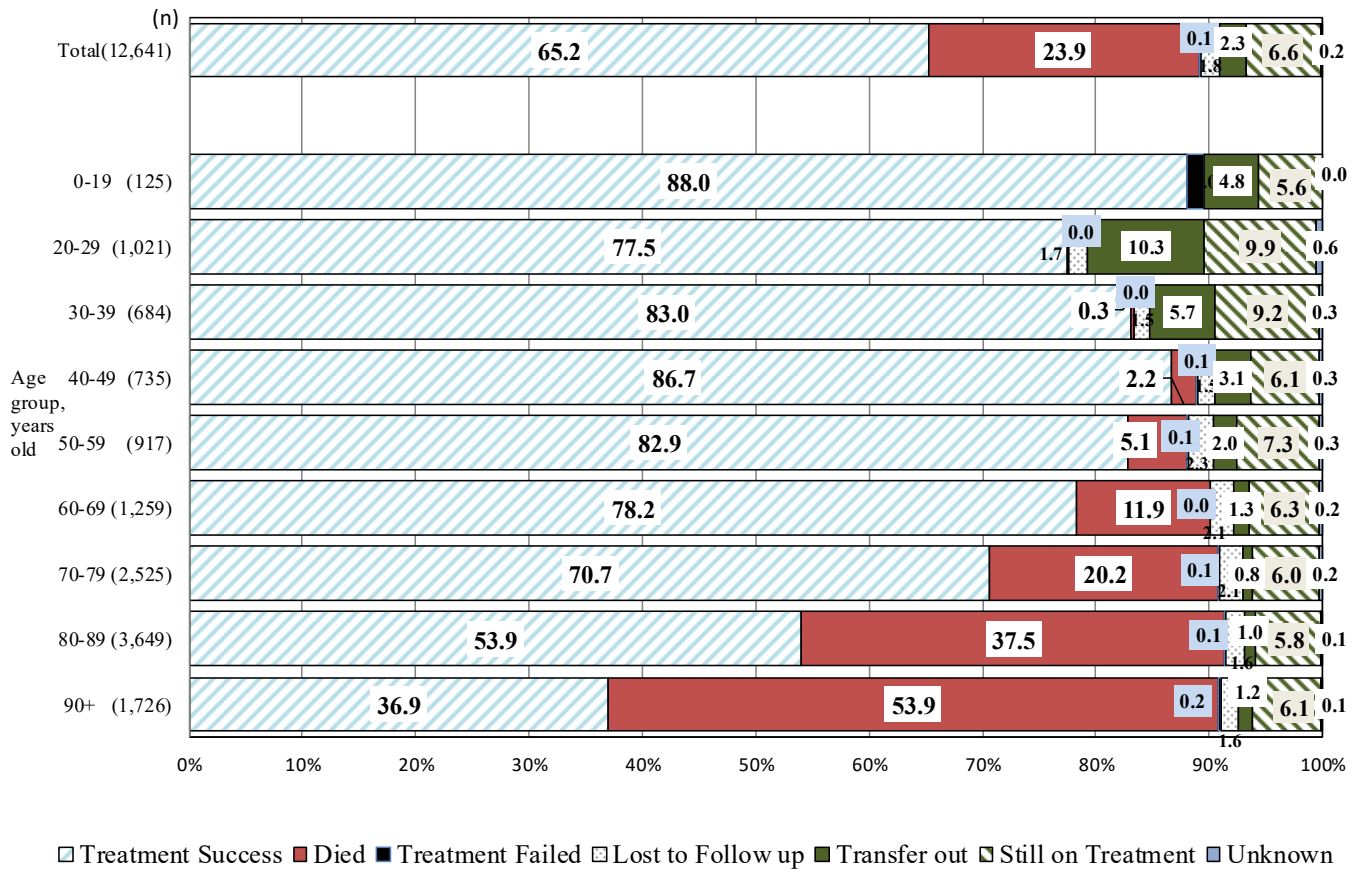


Fig. 3 Treatment outcomes of newly notified tuberculosis patients by age group, 2020 year cohort (%)

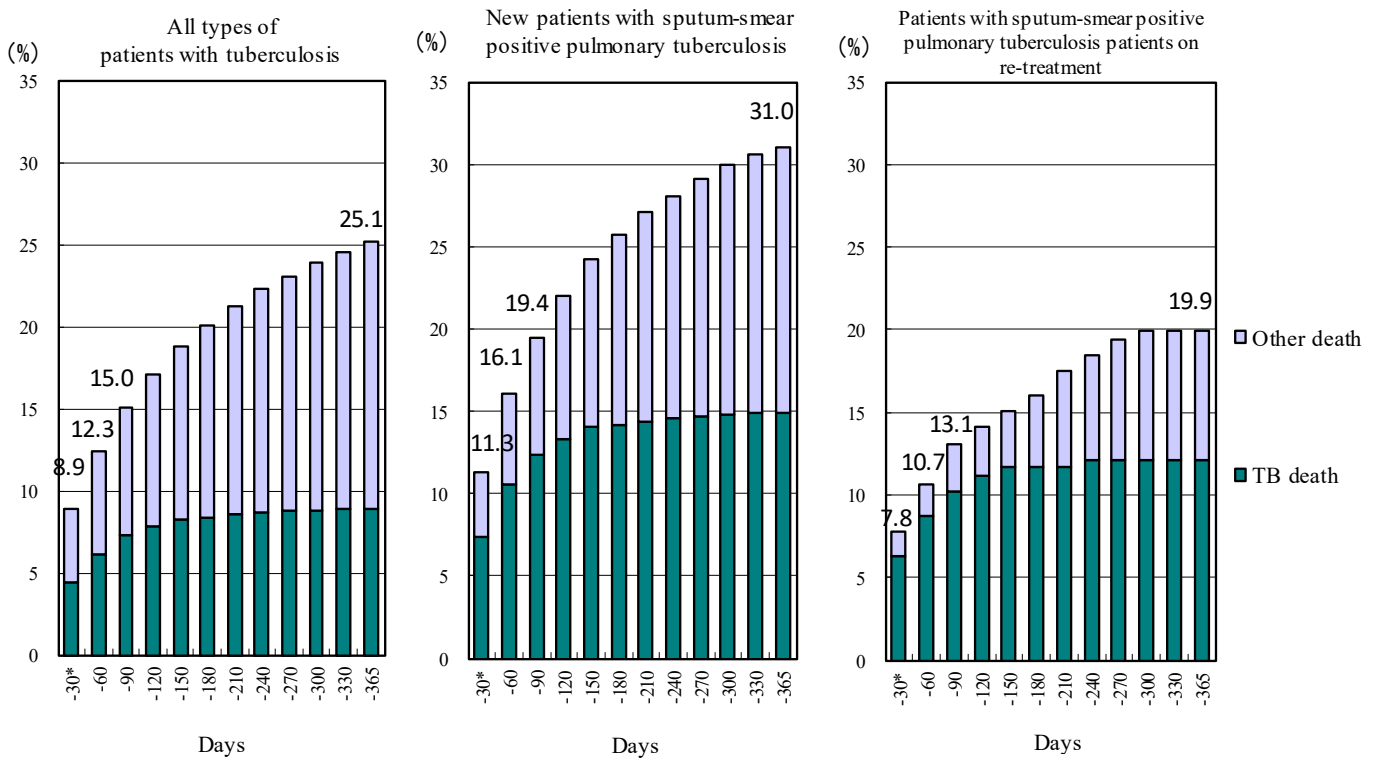


Fig. 4 Cumulative proportion of deaths by duration of treatment - Newly notified patients with tuberculosis in 2020

\* Includes patients who died before the commencement of treatment.  
 TB: tuberculosis