



Monthly Report of Tuberculosis Surveillance, Japan - August, 2022

The reporting and recording of tuberculosis (TB) and Latent TB Infection (LTBI) are managed at public health centers (PHCs) by the nationwide computerized TB surveillance system in Japan. A monthly report is compiled from the database automatically and regularly on 4th Friday of the next month, and an annual report is also produced much like the monthly report, but with sufficient time for data correction.

Tables and figures shown in the monthly reports are as follows.

Figures

Figure 1. Number of newly notified TB cases by month, Japan, 2019-2022

Figure 2. Newly notified TB cases by sex and age, Japan, summation (Jan. -Aug.) 2022

Figure 3. Notification rate of TB cases by sex and age, Japan, summation (Jan. -Aug.) 2022

Figure 4. Notification rate of TB by prefecture, Japan, summation (Jan. -Aug.) 2022

Figure 5. Notification rate of TB by major city, Japan, summation (Jan. -Aug.) 2022

Figure 6. Number of LTBI, Japan, 2019-2022

Figure 7. Number of LTBI by sex and age group, Japan, summation (Jan. -Aug.) 2022

Tables

Table 1. Newly notified TB cases and rates by sex and age, Japan, 2022

Table 2. Newly notified sputum smear positive pulmonary TB cases and rates by sex and age, Japan, 2022

Table 3. Newly notified TB cases and rates by prefecture, Japan, 2022

Table 4. Newly notified TB cases and rates by major city, Japan, 2022

Table 5. LTBI cases and rates by sex and age, Japan, 2022

Table 6. LTBI cases and rates by prefecture, Japan, 2022

Table 7. LTBI cases and rates by major city, Japan, 2022

Figure 1. Number of newly notified TB cases by month, Japan, 2019-2022

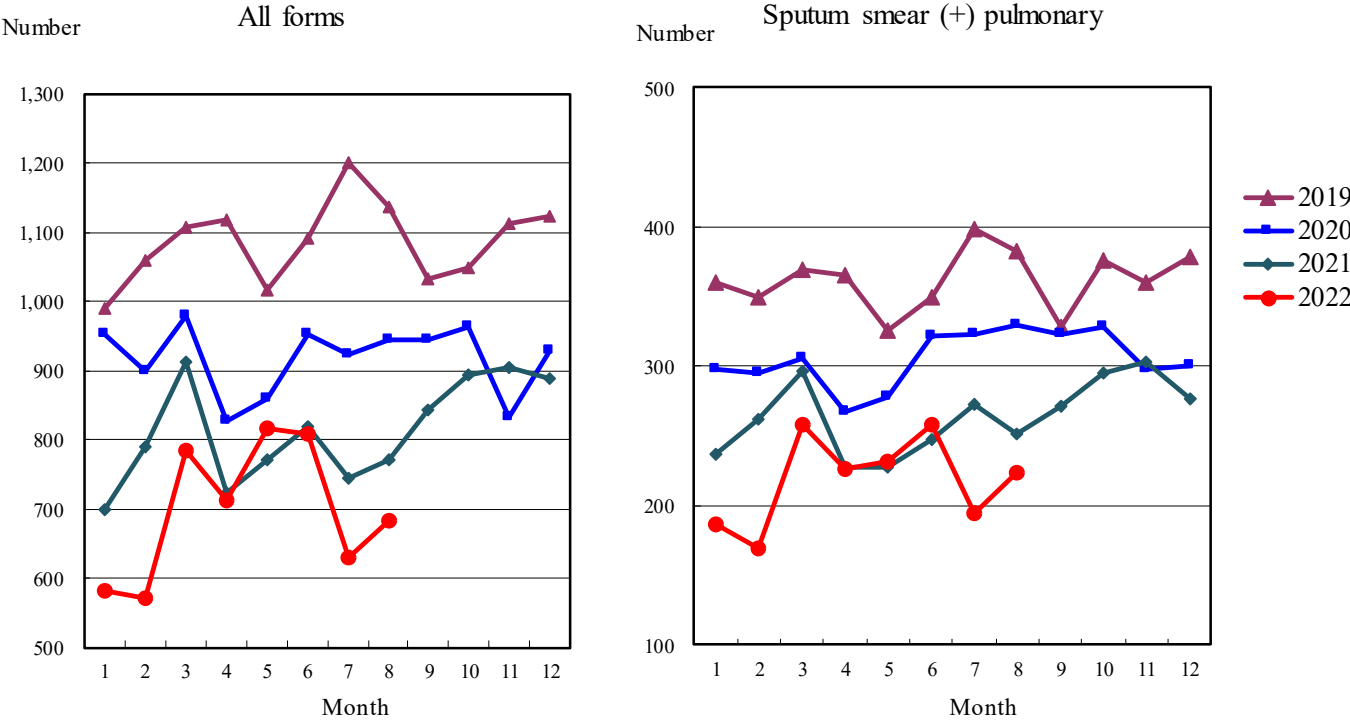


Figure 2. Newly notified TB patients by sex and age, Japan, summation (Jan.-Aug.) 2022

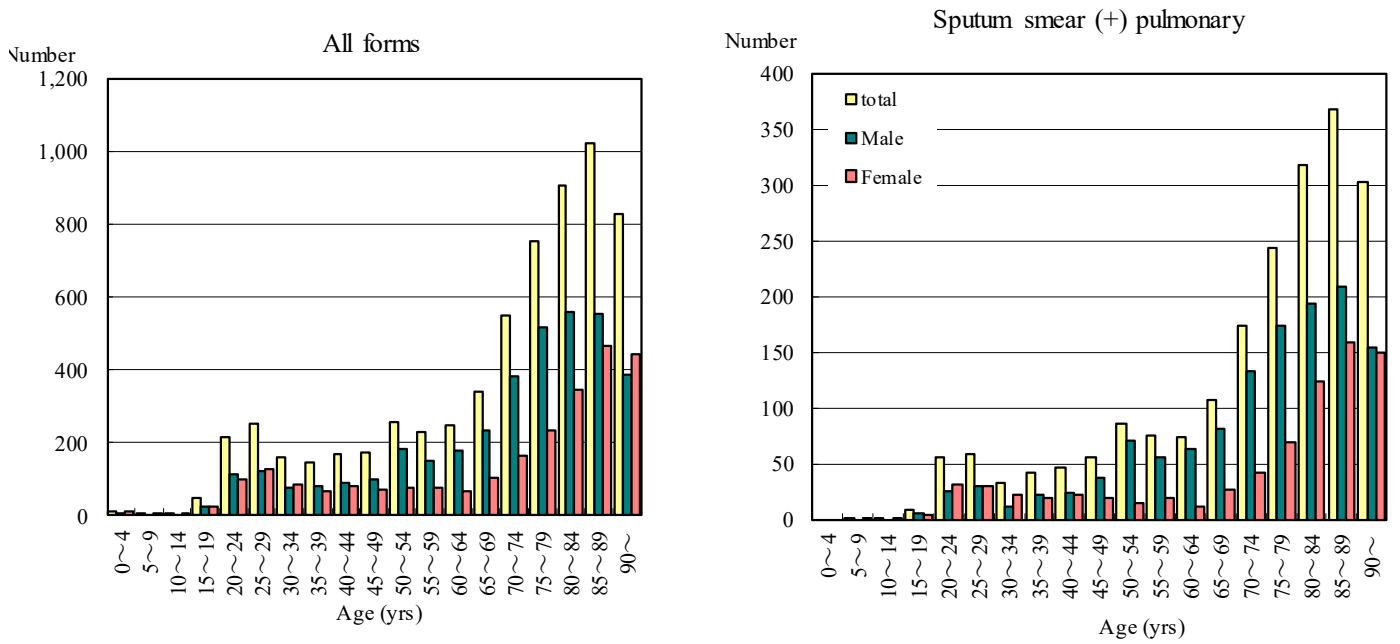


Figure 3. Notification rate of TB cases by sex and age, Japan, summation (Jan.-Aug.) 2022

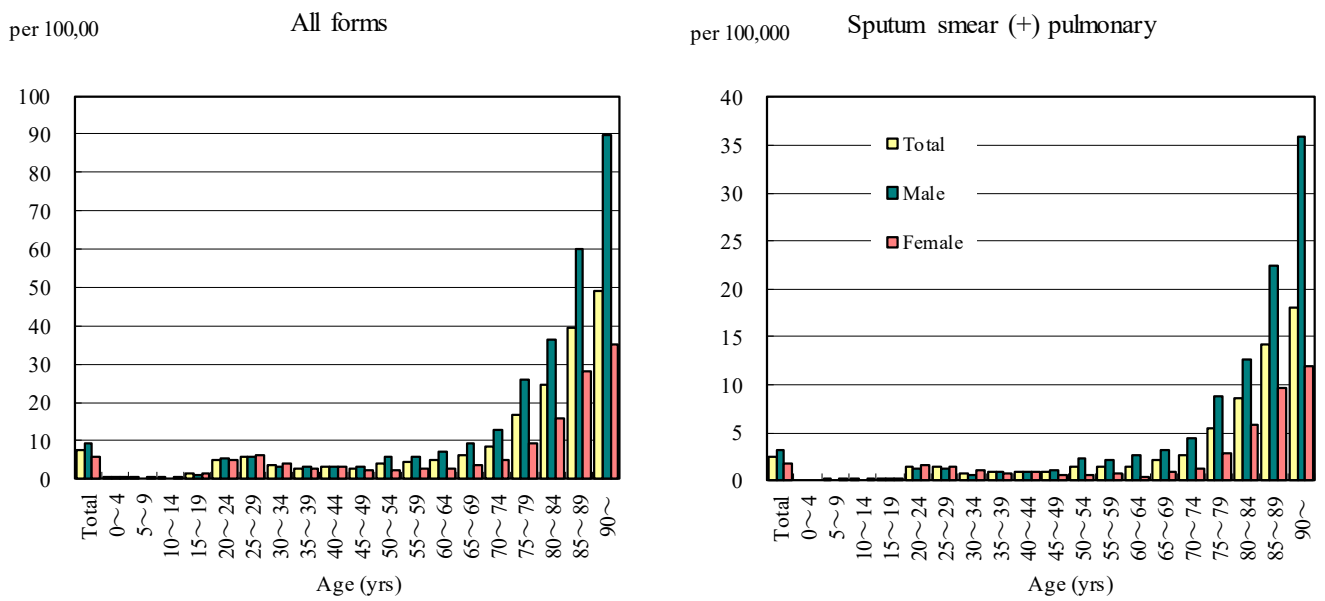


Figure 4. Notification rates of TB by prefecture, Japan, summation (Jan.-Aug.) 2022

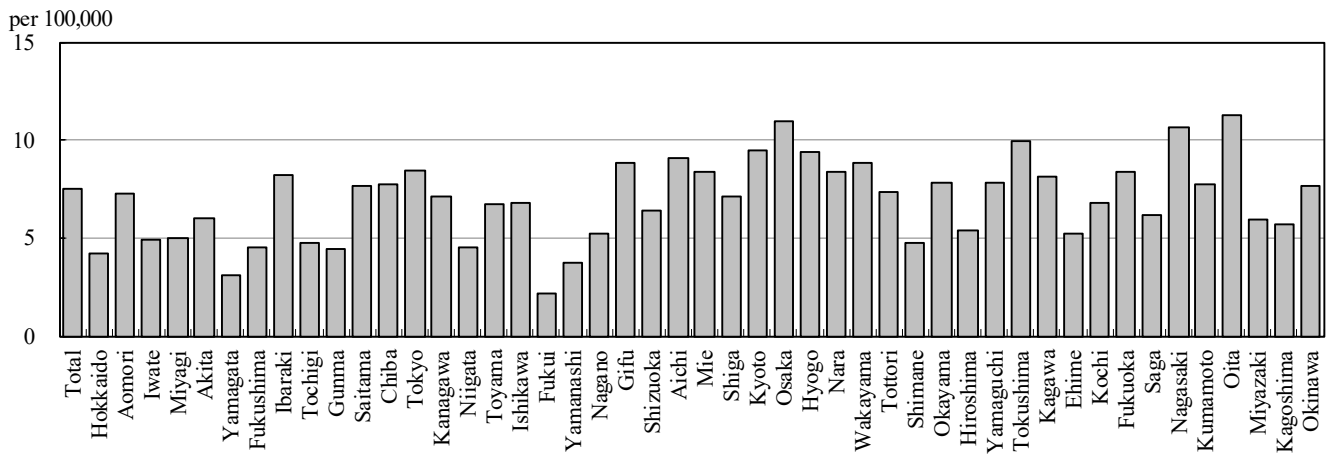


Figure 5. Notification rates of TB major city, Japan, summation (Jan.-Aug.) 2022

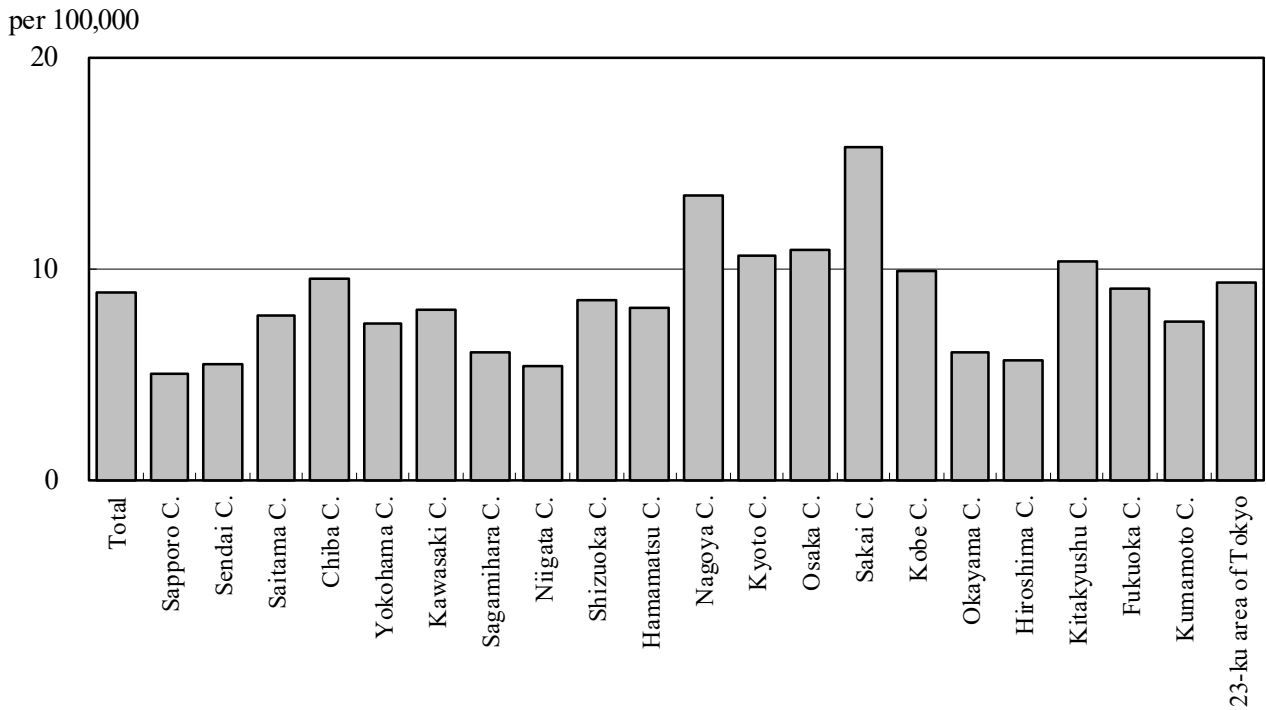


Figure 6. Number of LTBI, Japan, 2019-2022

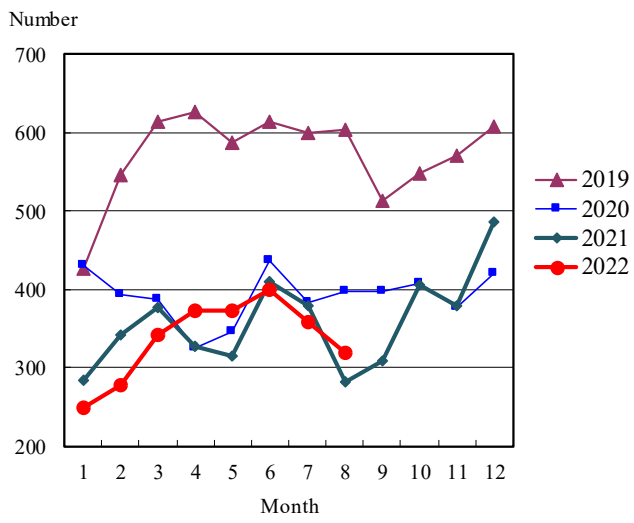


Figure 7. Number of LTBI by sex and age group, Japan, summation (Jan.-Aug.) 2022

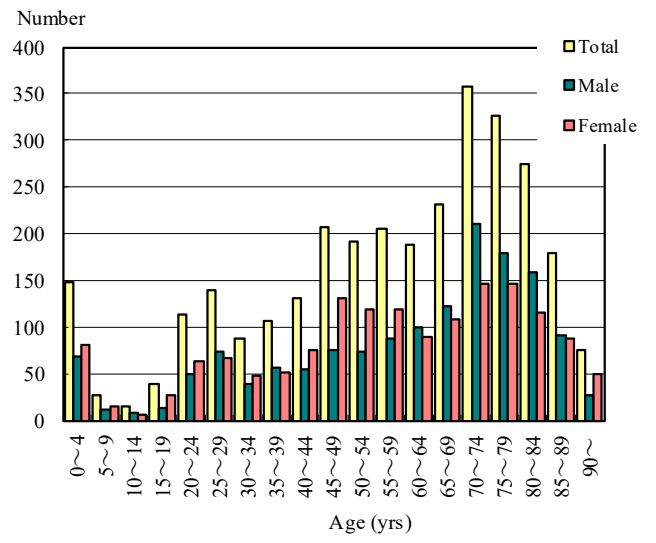


Table 1. Newly notified TB cases and rates by sex and age, Japan, 2022

	Aug.			Summation (Jan.-Aug.)			Notification rate (per 100,000)		
	Total	Male	Female	Total	Male	Female	Total	Male	Female
Total	683	411	272	6,301	3,754	2,547	7.5	9.2	5.9
0~4	0	0	0	12	1	11	0.4	0.1	0.8
5~9	0	0	0	3	0	3	0.1	0.0	0.2
10~14	0	0	0	2	0	2	0.1	0.0	0.1
15~19	6	2	4	47	23	24	1.3	1.2	1.3
20~24	28	13	15	213	113	100	5.1	5.3	4.9
25~29	37	20	17	251	124	127	5.9	5.7	6.1
30~34	22	9	13	161	76	85	3.7	3.4	4.0
35~39	11	5	6	145	80	65	3.0	3.2	2.7
40~44	17	11	6	170	90	80	3.1	3.3	3.0
45~49	25	14	11	171	99	72	2.6	3.0	2.2
50~54	24	18	6	257	183	74	4.2	5.9	2.4
55~59	18	11	7	227	150	77	4.4	5.8	2.9
60~64	23	17	6	247	179	68	5.0	7.3	2.7
65~69	43	32	11	338	235	103	6.4	9.2	3.8
70~74	67	51	16	550	384	166	8.5	12.6	4.9
75~79	72	43	29	752	517	235	16.8	25.9	9.5
80~84	94	65	29	907	560	347	24.5	36.4	16.0
85~89	115	69	46	1,020	555	465	39.5	60.0	28.1
90~	81	31	50	828	385	443	49.2	89.5	35.3

Temporary registrants = 64, Total of registrants and temporary registrants = 747

Rate: summation / (population*8/12)*100,000

Population: as of 1st Oct. 2021

Table 2. Newly notified sputum smear positive pulmonary TB cases and rates by sex and age, Japan, 2022

	Aug.			Summation (Jan.-Aug.)			Notification rate (per 100,000)		
	Total	Male	Female	Total	Male	Female	Total	Male	Female
Total	223	139	84	2,046	1,285	761	2.4	3.2	1.8
0~4	0	0	0	0	0	0	0.0	0.0	0.0
5~9	0	0	0	1	0	1	0.0	0.0	0.1
10~14	0	0	0	1	0	1	0.0	0.0	0.1
15~19	2	1	1	9	5	4	0.2	0.3	0.2
20~24	7	3	4	56	25	31	1.3	1.2	1.5
25~29	12	6	6	58	29	29	1.4	1.3	1.4
30~34	3	0	3	33	11	22	0.8	0.5	1.0
35~39	5	2	3	41	22	19	0.8	0.9	0.8
40~44	6	4	2	46	24	22	0.8	0.9	0.8
45~49	9	7	2	56	37	19	0.9	1.1	0.6
50~54	7	6	1	85	70	15	1.4	2.3	0.5
55~59	5	5	0	75	56	19	1.4	2.1	0.7
60~64	7	4	3	74	63	11	1.5	2.6	0.4
65~69	11	8	3	107	81	26	2.0	3.2	1.0
70~74	18	12	6	173	132	41	2.7	4.3	1.2
75~79	20	13	7	243	174	69	5.4	8.7	2.8
80~84	31	24	7	318	194	124	8.6	12.6	5.7
85~89	45	31	14	367	208	159	14.2	22.5	9.6
90~	35	13	22	303	154	149	18.0	35.8	11.9

Rate: summation / (population*8/12)*100,000

Population: as of 1st Oct. 2021

Table 3. Newly notified TB cases and rates by prefecture, Japan, 2022

	Aug.		Summation (Jan.-Aug.)		Notification rate (per 100,000)	
	Newly notified TB	Sputum smear (+)	Newly notified TB	Sputum smear (+)	Newly notified TB	Sputum smear (+)
Total	683	223	6,301	2,046	7.5	2.4
Hokkaido	12	4	145	42	4.2	1.2
Aomori	5	2	59	20	7.2	2.5
Iwate	9	4	39	14	4.9	1.8
Miyagi	4	4	76	37	5.0	2.4
Akita	9	2	38	10	6.0	1.6
Yamagata	1	0	22	8	3.1	1.1
Fukushima	3	1	55	22	4.6	1.8
Ibaraki	18	5	156	48	8.2	2.5
Tochigi	7	5	61	30	4.8	2.3
Gunma	5	2	57	22	4.4	1.7
Saitama	45	17	373	131	7.6	2.7
Chiba	35	7	323	83	7.7	2.0
Tokyo	102	41	785	281	8.4	3.0
Kanagawa	51	15	440	128	7.1	2.1
Niigata	4	1	65	16	4.5	1.1
Toyama	3	1	46	16	6.7	2.3
Ishikawa	3	1	51	17	6.8	2.3
Fukui	1	0	11	3	2.2	0.6
Yamanashi	2	1	20	7	3.7	1.3
Nagano	4	1	71	22	5.2	1.6
Gifu	14	1	115	34	8.8	2.6
Shizuoka	16	5	153	51	6.4	2.1
Aichi	57	10	455	125	9.1	2.5
Mie	10	2	98	34	8.4	2.9
Shiga	6	0	67	15	7.1	1.6
Kyoto	10	5	161	51	9.4	3.0
Osaka	58	17	642	232	10.9	4.0
Hyogo	48	17	340	126	9.4	3.5
Nara	10	6	73	25	8.3	2.9
Wakayama	10	4	54	15	8.9	2.5
Tottori	0	0	27	9	7.4	2.5
Shimane	3	1	21	6	4.7	1.4
Okayama	5	3	98	28	7.8	2.2
Hiroshima	7	2	100	39	5.4	2.1
Yamaguchi	7	2	69	15	7.8	1.7
Tokushima	6	2	47	10	9.9	2.1
Kagawa	8	3	51	19	8.1	3.0
Ehime	7	3	46	20	5.2	2.3
Kochi	2	2	31	13	6.8	2.9
Fukuoka	44	14	285	82	8.3	2.4
Saga	4	1	33	7	6.1	1.3
Nagasaki	7	4	92	23	10.6	2.7
Kumamoto	7	2	89	29	7.7	2.5
Oita	8	3	84	27	11.3	3.6
Miyazaki	1	0	42	11	5.9	1.6
Kagoshima	1	0	60	22	5.7	2.1
Okinawa	4	0	75	21	7.7	2.1

Rate: summation / (population*8/12)*100,000

Population: as of 1st Oct. 2021

Table 4. Newly notified TB cases and rates by major city, Japan, 2022

	Aug.		Summation (Jan.-Aug.)		Notification Rate (per 100,000)	
	Newly notified TB	Sputum Smear(+)	Newly notified TB	Sputum Smear(+)	Newly notified TB	Sputum Smear(+)
Total	259	85	2,216	742	8.9	3.0
Sapporo City	6	3	66	20	5.0	1.5
Sendai City	4	4	40	21	5.5	2.9
Saitama City	10	4	69	24	7.8	2.7
Chiba City	7	1	62	14	9.5	2.1
Yokohama City	29	6	186	64	7.4	2.5
Kawasaki City	7	4	82	23	8.0	2.2
Sagamihara City	3	0	29	7	6.0	1.4
Niigata City	2	1	28	7	5.4	1.3
Shizuoka City	8	3	39	14	8.5	3.0
Hamamatsu City	4	0	43	13	8.1	2.4
Nagoya City	30	6	208	64	13.4	4.1
Kyoto City	7	4	103	37	10.6	3.8
Osaka City	0	0	200	66	10.9	3.6
Sakai City	10	3	86	40	15.7	7.3
Kobe City	15	3	100	27	9.9	2.7
Okayama City	2	1	29	10	6.0	2.1
Hiroshima City	5	2	45	17	5.6	2.1
Kitakyushu City	8	4	64	16	10.3	2.6
Fukuoka City	20	5	98	27	9.1	2.5
Kumamoto City	3	1	37	12	7.5	2.4
23-ku area of Tokyo	79	30	602	219	9.3	3.4

Rate: summation / (population*8/12)*100,000

Population: as of 1st Oct. 2021

Major city: city with a population of one million or more.

Table 4 is a re-count of Table 3.

Table 5. LTBI cases and rates by sex and age, Japan, 2022

	Aug.			Summation (Jan.-Aug.)			(Ratio) LTBI/Newly notified cases		
	Total	Male	Female	Total	Male	Female	Total	Male	Female
Total	319	147	172	3,043	1,497	1,546	0.5	0.4	0.6
0~4	9	7	2	148	68	80	12.3	68.0	7.3
5~9	2	2	0	27	12	15	9.0	-	5.0
10~14	0	0	0	14	8	6	7.0	-	3.0
15~19	2	0	2	39	13	26	0.8	0.6	1.1
20~24	12	5	7	114	50	64	0.5	0.4	0.6
25~29	18	10	8	140	73	67	0.6	0.6	0.5
30~34	2	1	1	87	39	48	0.5	0.5	0.6
35~39	8	2	6	107	56	51	0.7	0.7	0.8
40~44	15	8	7	130	55	75	0.8	0.6	0.9
45~49	18	7	11	207	76	131	1.2	0.8	1.8
50~54	17	10	7	192	74	118	0.7	0.4	1.6
55~59	26	10	16	206	87	119	0.9	0.6	1.5
60~64	18	10	8	188	99	89	0.8	0.6	1.3
65~69	27	13	14	231	122	109	0.7	0.5	1.1
70~74	37	18	19	357	210	147	0.6	0.5	0.9
75~79	47	21	26	326	179	147	0.4	0.3	0.6
80~84	40	17	23	275	159	116	0.3	0.3	0.3
85~89	15	5	10	179	91	88	0.2	0.2	0.2
90~	6	1	5	76	26	50	0.1	0.1	0.1

LTBI: latent TB Infection

Number of LTBI is not included in the newly notified TB patients

Table 6. LTBI cases and rates by prefecture, Japan, 2022

	Aug.	Summation (Jan.-Aug.)	
	LTBI	LTBI	(Ratio) LTBI / new TB
Total	319	3,043	0.48
Hokkaido	10	135	0.93
Aomori	2	26	0.44
Iwate	4	31	0.79
Miyagi	5	37	0.49
Akita	1	8	0.21
Yamagata	0	10	0.45
Fukushima	4	27	0.49
Ibaraki	16	89	0.57
Tochigi	1	9	0.15
Gunma	2	31	0.54
Saitama	21	181	0.49
Chiba	13	173	0.54
Tokyo	41	417	0.53
Kanagawa	24	208	0.47
Niigata	1	33	0.51
Toyama	3	22	0.48
Ishikawa	7	32	0.63
Fukui	3	7	0.64
Yamanashi	1	10	0.50
Nagano	3	48	0.68
Gifu	5	47	0.41
Shizuoka	15	59	0.39
Aichi	21	200	0.44
Mie	2	14	0.14
Shiga	3	24	0.36
Kyoto	13	69	0.43
Osaka	13	265	0.41
Hyogo	13	142	0.42
Nara	4	23	0.32
Wakayama	3	17	0.31
Tottori	3	13	0.48
Shimane	0	8	0.38
Okayama	2	62	0.63
Hiroshima	4	61	0.61
Yamaguchi	2	31	0.45
Tokushima	1	7	0.15
Kagawa	1	27	0.53
Ehime	1	9	0.20
Kochi	0	9	0.29
Fukuoka	25	196	0.69
Saga	1	10	0.30
Nagasaki	0	24	0.26
Kumamoto	2	33	0.37
Oita	6	29	0.35
Miyazaki	2	14	0.33
Kagoshima	3	34	0.57
Okinawa	12	82	1.09

LTBI: Latent TB Infection

Number of LTBI is not included in the newly notified TB patients.

Table 7. LTBI cases and rates by major city, Japan, 2022

	Aug.	Summation (Jan.-Aug.)	
	LTBI	LTBI	(Ratio) LTBI / new TB
Total	121	1,102	0.50
Sapporo City	7	65	0.98
Sendai City	3	19	0.48
Saitama City	2	21	0.30
Chiba City	3	37	0.60
Yokohama City	12	90	0.48
Kawasaki City	6	53	0.65
Sagamihara City	1	14	0.48
Niigata City	1	12	0.43
Shizuoka City	2	13	0.33
Hamamatsu City	6	14	0.33
Nagoya City	7	85	0.41
Kyoto City	12	51	0.50
Osaka City	0	96	0.48
Sakai City	5	34	0.40
Kobe City	4	44	0.44
Okayama City	1	36	1.24
Hiroshima City	3	19	0.42
Kitakyushu City	4	42	0.66
Fukuoka City	6	60	0.61
Kumamoto City	2	13	0.35
23-ku area of Tokyo	34	284	0.47

LTBI: Latent TB Infection

Number of LTBI is not included in the newly notified TB patients,

Major city: city with a population of one million or more

Table 7 is a re-count of Table 6