



Monthly Report of Tuberculosis Surveillance, Japan – September, 2022

The reporting and recording of tuberculosis (TB) and Latent TB Infection (LTBI) are managed at public health centers (PHCs) by the nationwide computerized TB surveillance system in Japan. A monthly report is compiled from the database automatically and regularly on 4th Friday of the next month, and an annual report is also produced much like the monthly report, but with sufficient time for data correction.

Tables and figures shown in the monthly reports are as follows.

Figures

Figure 1. Number of newly notified TB cases by month, Japan, 2019-2022

Figure 2. Newly notified TB cases by sex and age, Japan, summation (Jan. -Sep.) 2022

Figure 3. Notification rate of TB cases by sex and age, Japan, summation (Jan. -Sep.) 2022

Figure 4. Notification rate of TB by prefecture, Japan, summation (Jan. -Sep.) 2022

Figure 5. Notification rate of TB by major city, Japan, summation (Jan. -Sep.) 2022

Figure 6. Number of LTBI, Japan, 2019-2022

Figure 7. Number of LTBI by sex and age group, Japan, summation (Jan. -Sep.) 2022

Tables

Table 1. Newly notified TB cases and rates by sex and age, Japan, 2022

Table 2. Newly notified sputum smear positive pulmonary TB cases and rates by sex and age, Japan, 2022

Table 3. Newly notified TB cases and rates by prefecture, Japan, 2022

Table 4. Newly notified TB cases and rates by major city, Japan, 2022

Table 5. LTBI cases and rates by sex and age, Japan, 2022

Table 6. LTBI cases and rates by prefecture, Japan, 2022

Table 7. LTBI cases and rates by major city, Japan, 2022

Figure 1. Number of newly notified TB cases by month, Japan, 2019-2022

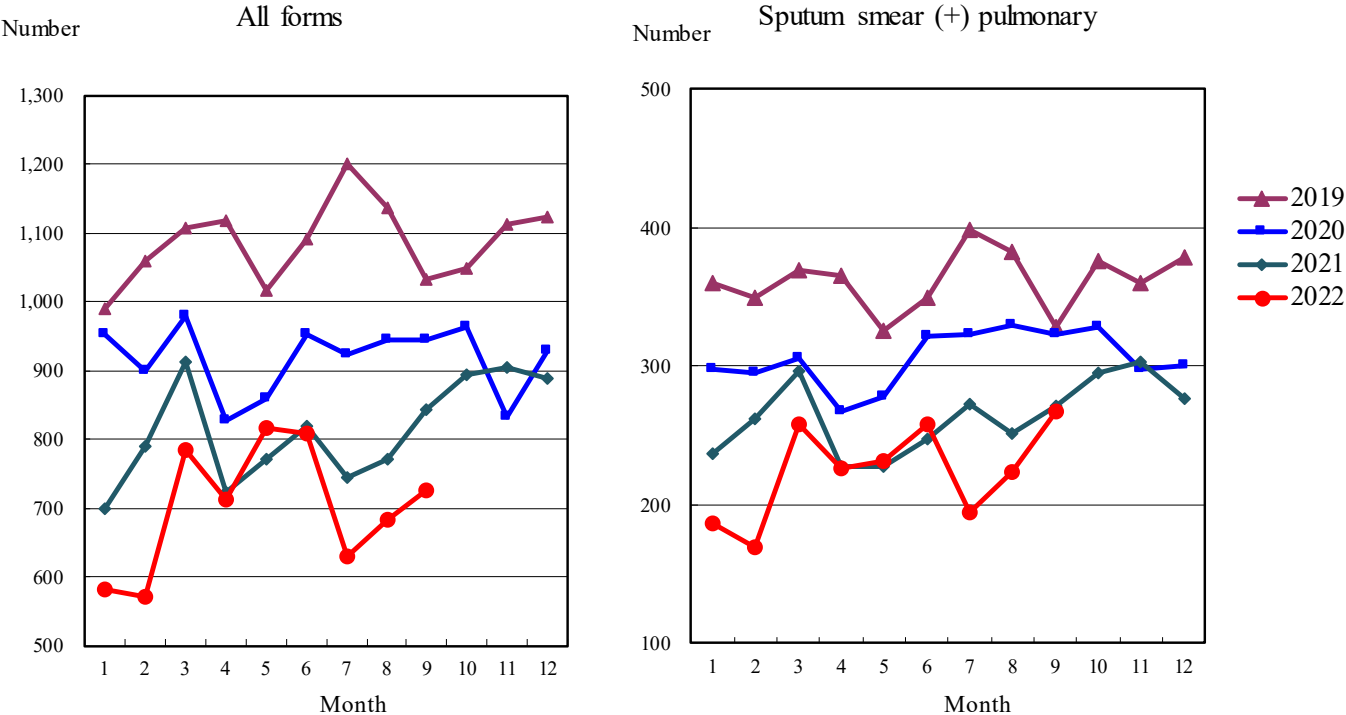


Figure 2. Newly notified TB patients by sex and age, Japan, summation (Jan.-Sep.) 2022

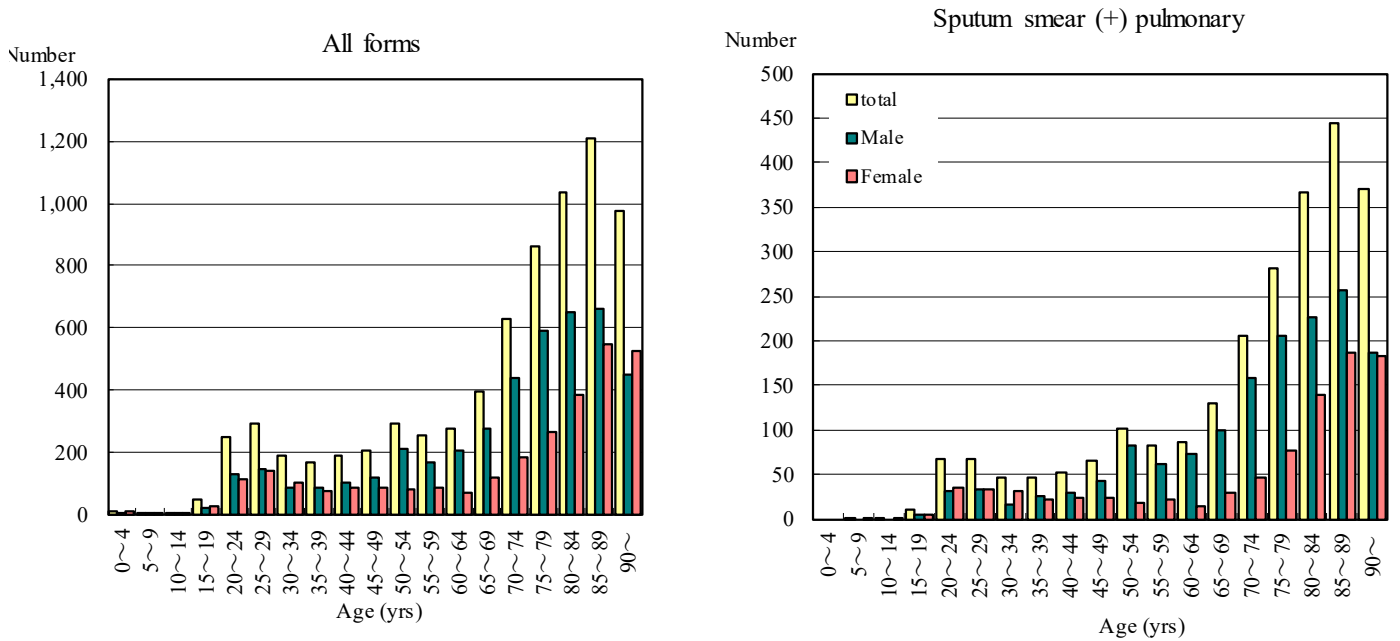


Figure 3. Notification rate of TB cases by sex and age, Japan, summation (Jan.-Sep.) 2022

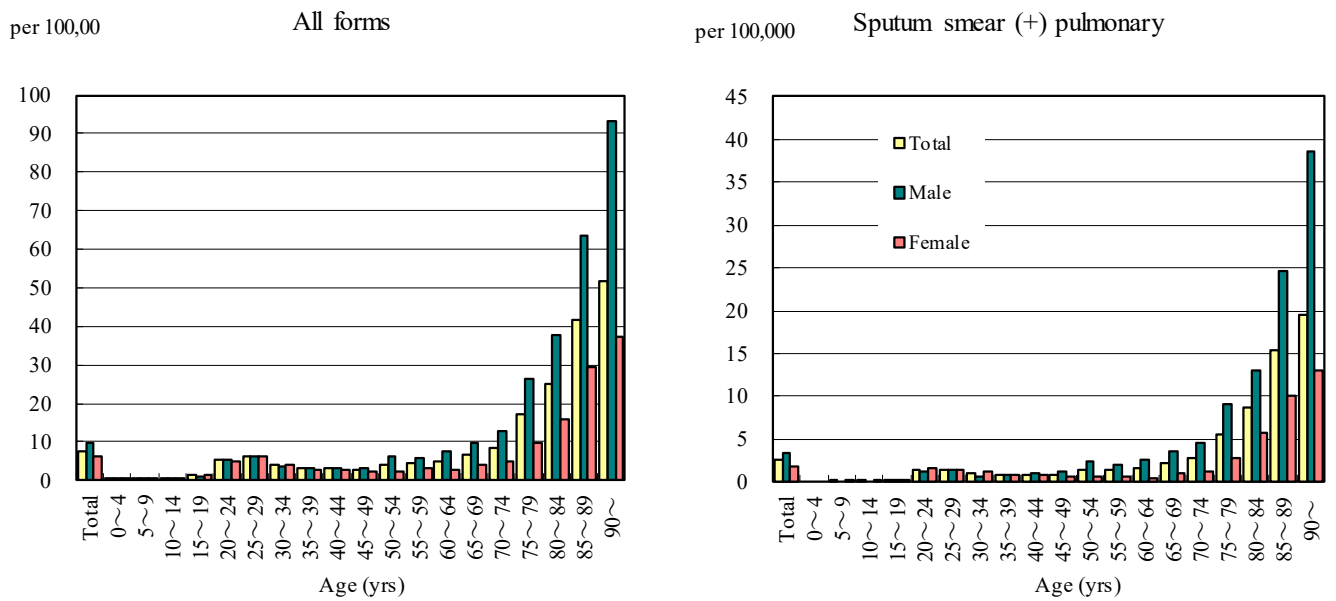


Figure 4. Notification rates of TB by prefecture, Japan, summation (Jan.-Sep.) 2022

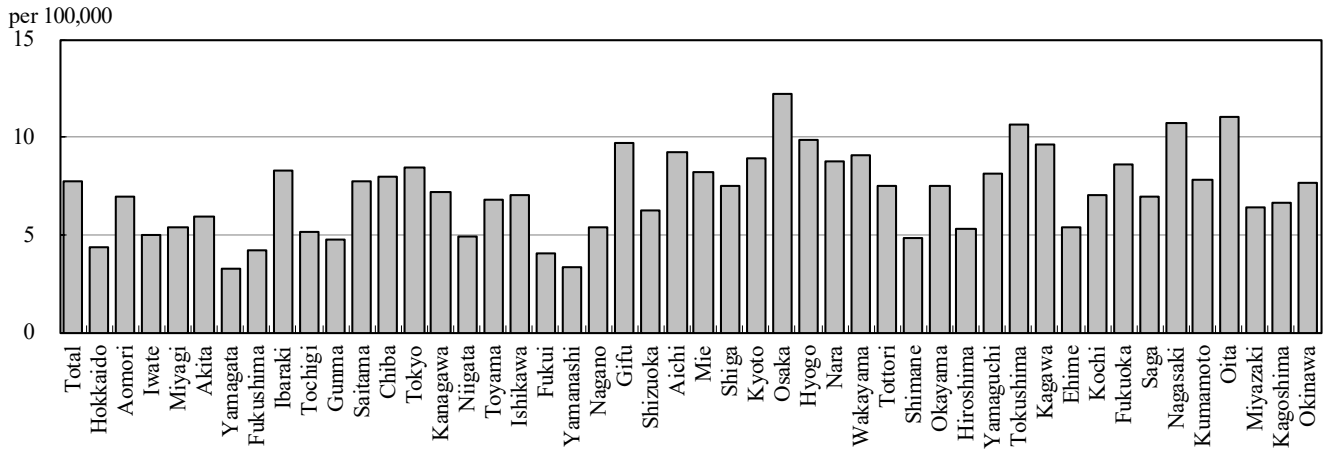


Figure 5. Notification rates of TB major city, Japan, summation (Jan.-Sep.) 2022

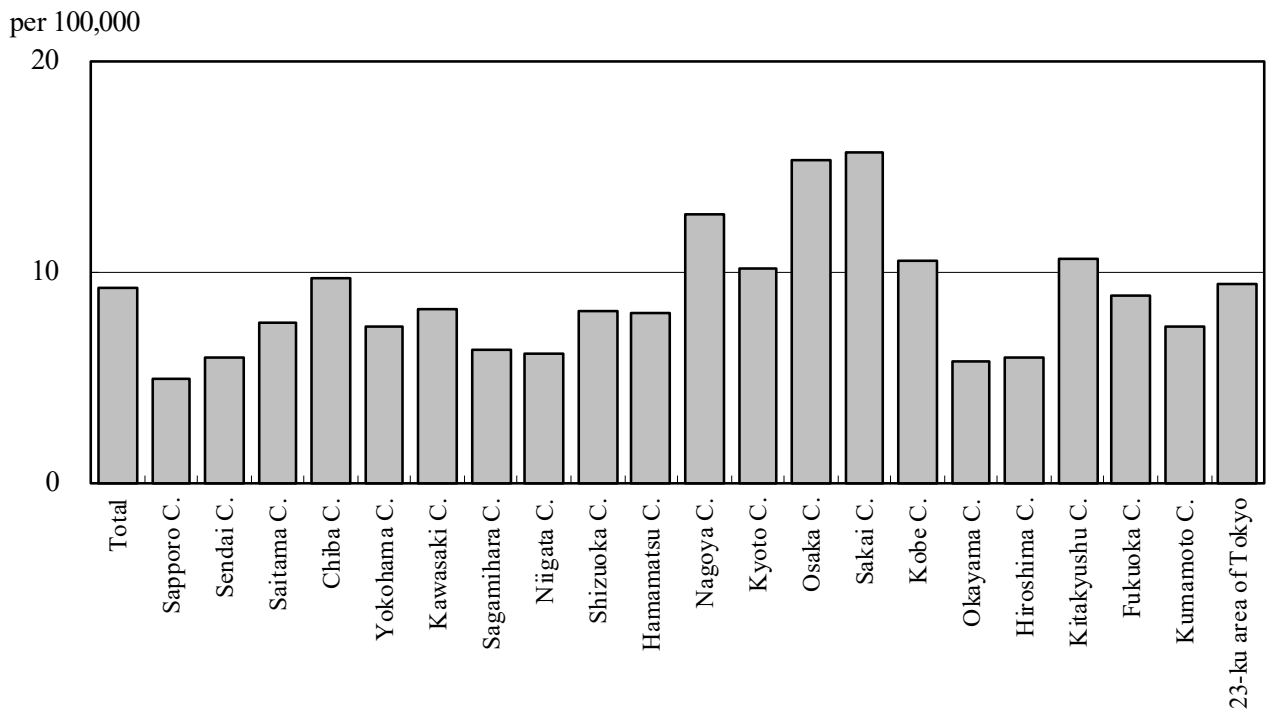


Figure 6. Number of LTBI, Japan, 2019-2022

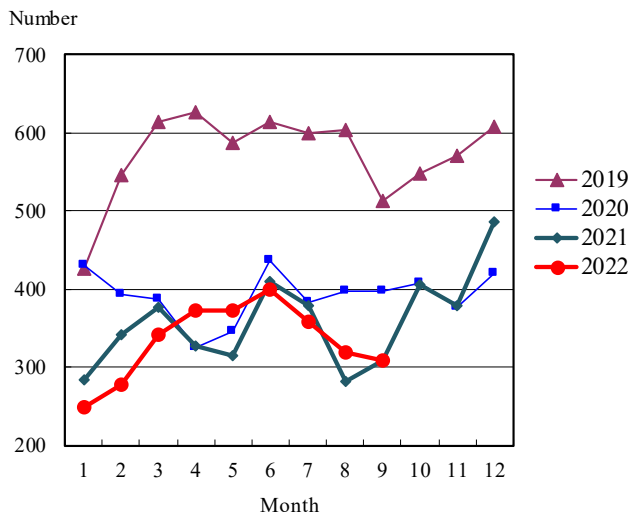


Figure 7. Number of LTBI by sex and age group, Japan, summation (Jan.-Sep.) 2022

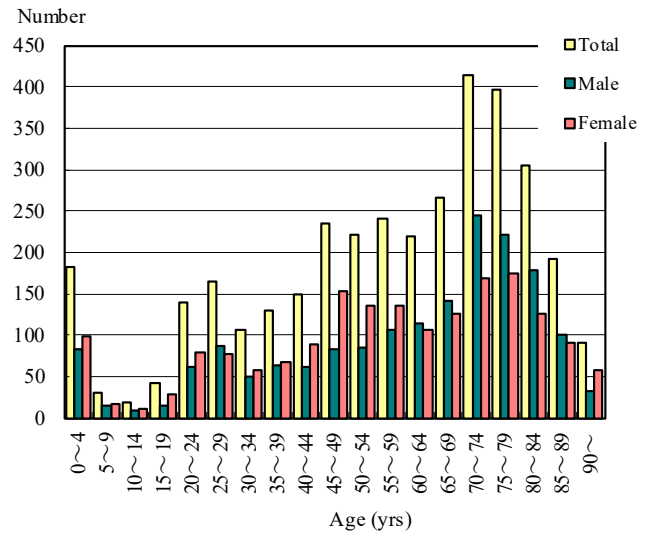


Table 1. Newly notified TB cases and rates by sex and age, Japan, 2022

	Sep.			Summation (Jan.-Sep.)			Notification rate (per 100,000)		
	Total	Male	Female	Total	Male	Female	Total	Male	Female
Total	725	432	293	7,314	4,372	2,942	7.8	9.6	6.1
0~4	1	0	1	13	1	12	0.4	0.1	0.7
5~9	1	1	0	4	1	3	0.1	0.1	0.2
10~14	1	1	0	3	1	2	0.1	0.0	0.1
15~19	3	1	2	52	25	27	1.2	1.2	1.3
20~24	18	11	7	249	134	115	5.3	5.6	5.0
25~29	29	16	13	293	150	143	6.1	6.1	6.1
30~34	18	8	10	191	88	103	3.9	3.5	4.3
35~39	17	5	12	168	89	79	3.0	3.2	2.9
40~44	17	12	5	191	103	88	3.1	3.3	2.9
45~49	27	13	14	206	120	86	2.8	3.2	2.4
50~54	28	23	5	294	212	82	4.2	6.1	2.4
55~59	25	15	10	258	170	88	4.4	5.8	3.0
60~64	21	19	2	280	207	73	5.1	7.6	2.6
65~69	38	26	12	398	275	123	6.7	9.6	4.1
70~74	53	35	18	628	440	188	8.7	12.9	4.9
75~79	77	52	25	863	594	269	17.1	26.5	9.6
80~84	98	69	29	1,038	651	387	24.9	37.6	15.9
85~89	144	79	65	1,209	660	549	41.6	63.4	29.5
90~	109	46	63	976	451	525	51.5	93.2	37.2

Temporary registrants = 51, Total of registrants and temporary registrants = 776

Rate: summation / (population*9/12)*100,000

Population: as of 1st Oct. 2021

Table 2. Newly notified sputum smear positive pulmonary TB cases and rates by sex and age, Japan, 2022

	Sep.			Summation (Jan.-Sep.)			Notification rate (per 100,000)		
	Total	Male	Female	Total	Male	Female	Total	Male	Female
Total	267	167	100	2,425	1,533	892	2.6	3.3	1.8
0~4	0	0	0	0	0	0	0.0	0.0	0.0
5~9	0	0	0	1	0	1	0.0	0.0	0.1
10~14	0	0	0	1	0	1	0.0	0.0	0.1
15~19	0	0	0	10	5	5	0.2	0.2	0.2
20~24	7	4	3	67	31	36	1.4	1.3	1.6
25~29	7	3	4	67	34	33	1.4	1.4	1.4
30~34	10	3	7	47	16	31	1.0	0.6	1.3
35~39	4	2	2	47	25	22	0.9	0.9	0.8
40~44	5	4	1	53	29	24	0.9	0.9	0.8
45~49	9	5	4	65	42	23	0.9	1.1	0.6
50~54	12	10	2	101	83	18	1.5	2.4	0.5
55~59	6	4	2	82	61	21	1.4	2.1	0.7
60~64	7	6	1	87	73	14	1.6	2.7	0.5
65~69	18	15	3	130	100	30	2.2	3.5	1.0
70~74	22	16	6	206	159	47	2.8	4.6	1.2
75~79	20	15	5	281	205	76	5.6	9.1	2.7
80~84	32	23	9	366	226	140	8.8	13.0	5.7
85~89	59	35	24	444	257	187	15.3	24.7	10.0
90~	49	22	27	370	187	183	19.5	38.7	13.0

Rate: summation / (population*9/12)*100,000

Population: as of 1st Oct. 2021

Table 3. Newly notified TB cases and rates by prefecture, Japan, 2022

	Sep.		Summation (Jan.-Sep.)		Notification rate (per 100,000)	
	Newly notified TB	Sputum smear (+)	Newly notified TB	Sputum smear (+)	Newly notified TB	Sputum smear (+)
Total	725	267	7,314	2,425	7.8	2.6
Hokkaido	21	7	168	49	4.3	1.3
Aomori	5	2	64	23	7.0	2.5
Iwate	6	1	45	15	5.0	1.7
Miyagi	10	5	92	45	5.4	2.6
Akita	4	1	42	11	5.9	1.6
Yamagata	0	0	26	9	3.3	1.1
Fukushima	2	0	57	22	4.2	1.6
Ibaraki	21	5	178	54	8.3	2.5
Tochigi	7	3	74	35	5.1	2.4
Gunma	8	4	69	27	4.8	1.9
Saitama	47	21	426	155	7.7	2.8
Chiba	40	14	375	104	8.0	2.2
Tokyo	95	32	889	319	8.5	3.0
Kanagawa	57	24	498	152	7.2	2.2
Niigata	7	3	80	24	4.9	1.5
Toyama	6	2	52	18	6.8	2.3
Ishikawa	6	3	59	20	7.0	2.4
Fukui	5	2	23	6	4.0	1.1
Yamanashi	0	0	20	7	3.3	1.2
Nagano	8	2	82	26	5.4	1.7
Gifu	13	4	143	43	9.7	2.9
Shizuoka	12	3	169	57	6.2	2.1
Aichi	45	17	522	145	9.3	2.6
Mie	7	4	108	38	8.2	2.9
Shiga	8	0	79	16	7.5	1.5
Kyoto	7	2	171	53	8.9	2.8
Osaka	56	31	806	308	12.2	4.7
Hyogo	58	19	401	145	9.8	3.6
Nara	13	6	86	33	8.7	3.3
Wakayama	5	2	62	17	9.0	2.5
Tottori	4	1	31	10	7.5	2.4
Shimane	2	1	24	7	4.8	1.4
Okayama	6	1	105	31	7.5	2.2
Hiroshima	7	3	111	43	5.3	2.1
Yamaguchi	5	2	81	20	8.1	2.0
Tokushima	4	0	57	12	10.7	2.2
Kagawa	16	8	68	27	9.6	3.8
Ehime	1	0	53	25	5.3	2.5
Kochi	2	1	36	15	7.0	2.9
Fukuoka	43	16	330	98	8.6	2.6
Saga	5	2	42	10	6.9	1.7
Nagasaki	10	4	104	28	10.7	2.9
Kumamoto	10	2	101	32	7.8	2.5
Oita	8	3	92	31	11.0	3.7
Miyazaki	6	1	51	12	6.4	1.5
Kagoshima	12	3	78	26	6.6	2.2
Okinawa	5	0	84	22	7.6	2.0

Rate: summation / (population*9/12)*100,000

Population: as of 1st Oct. 2021

Table 4. Newly notified TB cases and rates by major city, Japan, 2022

	Sep.		Summation (Jan.-Sep.)		Notification Rate (per 100,000)	
	Newly notified TB	Sputum Smear(+)	Newly notified TB	Sputum Smear(+)	Newly notified TB	Sputum Smear(+)
Total	238	83	2,585	884	9.2	3.1
Sapporo City	7	1	73	21	4.9	1.4
Sendai City	4	2	49	25	6.0	3.0
Saitama City	7	2	76	27	7.6	2.7
Chiba City	9	5	71	19	9.7	2.6
Yokohama City	24	8	209	72	7.4	2.5
Kawasaki City	12	4	95	27	8.2	2.3
Sagamihara City	5	3	34	10	6.2	1.8
Niigata City	3	1	36	12	6.1	2.0
Shizuoka City	3	0	42	14	8.1	2.7
Hamamatsu City	5	1	48	14	8.0	2.3
Nagoya City	13	5	221	69	12.7	4.0
Kyoto City	7	2	111	39	10.2	3.6
Osaka City	8	5	315	114	15.3	5.5
Sakai City	10	4	96	44	15.6	7.2
Kobe City	20	6	120	33	10.5	2.9
Okayama City	1	0	31	11	5.7	2.0
Hiroshima City	5	2	53	19	5.9	2.1
Kitakyushu City	10	4	74	20	10.6	2.9
Fukuoka City	10	4	108	31	8.9	2.6
Kumamoto City	4	2	41	15	7.4	2.7
23-ku area of Tokyo	71	22	682	248	9.4	3.4

Rate: summation / (population*9/12)*100,000

Population: as of 1st Oct. 2021

Major city: city with a population of one million or more.

Table 4 is a re-count of Table 3.

Table 5. LTBI cases and rates by sex and age, Japan, 2022

	Sep.			Summation (Jan.-Sep.)			(Ratio) LTBI/Newly notified cases		
	Total	Male	Female	Total	Male	Female	Total	Male	Female
Total	308	161	147	3,540	1,749	1,791	0.5	0.4	0.6
0~4	25	11	14	182	83	99	14.0	83.0	8.3
5~9	2	1	1	30	14	16	7.5	14.0	5.3
10~14	4	0	4	19	8	11	6.3	8.0	5.5
15~19	1	0	1	42	14	28	0.8	0.6	1.0
20~24	11	6	5	140	61	79	0.6	0.5	0.7
25~29	9	5	4	164	87	77	0.6	0.6	0.5
30~34	9	2	7	106	49	57	0.6	0.6	0.6
35~39	15	5	10	130	63	67	0.8	0.7	0.8
40~44	11	4	7	150	62	88	0.8	0.6	1.0
45~49	19	5	14	235	83	152	1.1	0.7	1.8
50~54	20	9	11	221	85	136	0.8	0.4	1.7
55~59	22	14	8	241	106	135	0.9	0.6	1.5
60~64	18	11	7	219	113	106	0.8	0.5	1.5
65~69	21	11	10	266	141	125	0.7	0.5	1.0
70~74	38	22	16	413	245	168	0.7	0.6	0.9
75~79	53	36	17	396	222	174	0.5	0.4	0.6
80~84	12	8	4	304	179	125	0.3	0.3	0.3
85~89	11	8	3	191	101	90	0.2	0.2	0.2
90~	7	3	4	91	33	58	0.1	0.1	0.1

LTBI: latent TB Infection

Number of LTBI is not included in the newly notified TB patients

Table 6. LTBI cases and rates by prefecture, Japan, 2022

	Sep.	Summation (Jan.-Sep.)	
	LTBI	LTBI	(Ratio) LTBI /new TB
Total	308	3,540	0.48
Hokkaido	15	153	0.91
Aomori	3	29	0.45
Iwate	5	43	0.96
Miyagi	7	51	0.55
Akita	1	10	0.24
Yamagata	1	13	0.50
Fukushima	0	27	0.47
Ibaraki	12	101	0.57
Tochigi	2	12	0.16
Gunma	4	37	0.54
Saitama	21	203	0.48
Chiba	15	191	0.51
Tokyo	45	471	0.53
Kanagawa	15	225	0.45
Niigata	4	50	0.63
Toyama	2	25	0.48
Ishikawa	5	37	0.63
Fukui	0	9	0.39
Yamanashi	0	11	0.55
Nagano	8	58	0.71
Gifu	3	56	0.39
Shizuoka	9	69	0.41
Aichi	24	233	0.45
Mie	1	15	0.14
Shiga	3	29	0.37
Kyoto	4	78	0.46
Osaka	20	350	0.43
Hyogo	11	155	0.39
Nara	4	27	0.31
Wakayama	2	19	0.31
Tottori	1	14	0.45
Shimane	0	8	0.33
Okayama	2	65	0.62
Hiroshima	4	83	0.75
Yamaguchi	3	37	0.46
Tokushima	1	10	0.18
Kagawa	1	28	0.41
Ehime	3	14	0.26
Kochi	4	13	0.36
Fukuoka	18	215	0.65
Saga	1	16	0.38
Nagasaki	3	29	0.28
Kumamoto	0	34	0.34
Oita	8	37	0.40
Miyazaki	3	17	0.33
Kagoshima	0	37	0.47
Okinawa	10	96	1.14

LTBI: Latent TB Infection

Number of LTBI is not included in the newly notified TB patients.

Table 7. LTBI cases and rates by major city, Japan, 2022

	Sep.	Summation (Jan.-Sep.)	
	LTBI	LTBI	(Ratio) LTBI / new TB
Total	105	1,302	0.50
Sapporo City	4	69	0.95
Sendai City	4	29	0.59
Saitama City	3	24	0.32
Chiba City	3	40	0.56
Yokohama City	5	97	0.46
Kawasaki City	3	56	0.59
Sagamihara City	1	15	0.44
Niigata City	3	23	0.64
Shizuoka City	4	17	0.40
Hamamatsu City	3	17	0.35
Nagoya City	11	97	0.44
Kyoto City	4	57	0.51
Osaka City	6	168	0.53
Sakai City	2	36	0.38
Kobe City	3	47	0.39
Okayama City	1	37	1.19
Hiroshima City	2	21	0.40
Kitakyushu City	1	43	0.58
Fukuoka City	5	66	0.61
Kumamoto City	0	13	0.32
23-ku area of Tokyo	37	330	0.48

LTBI: Latent TB Infection

Number of LTBI is not included in the newly notified TB patients,

Major city: city with a population of one million or more

Table 7 is a re-count of Table 6