



## Monthly Report of Tuberculosis Surveillance, Japan - October, 2022

The reporting and recording of tuberculosis (TB) and Latent TB Infection (LTBI) are managed at public health centers (PHCs) by the nationwide computerized TB surveillance system in Japan. A monthly report is compiled from the database automatically and regularly on 4<sup>th</sup> Friday of the next month, and an annual report is also produced much like the monthly report, but with sufficient time for data correction.

Tables and figures shown in the monthly reports are as follows.

### Figures

Figure 1. Number of newly notified TB cases by month, Japan, 2019-2022

Figure 2. Newly notified TB cases by sex and age, Japan, summation (Jan. -Oct.) 2022

Figure 3. Notification rate of TB cases by sex and age, Japan, summation (Jan. -Oct.) 2022

Figure 4. Notification rate of TB by prefecture, Japan, summation (Jan. -Oct.) 2022

Figure 5. Notification rate of TB by major city, Japan, summation (Jan. -Oct.) 2022

Figure 6. Number of LTBI, Japan, 2019-2022

Figure 7. Number of LTBI by sex and age group, Japan, summation (Jan. -Oct.) 2022

### Tables

Table 1. Newly notified TB cases and rates by sex and age, Japan, 2022

Table 2. Newly notified sputum smear positive pulmonary TB cases and rates by sex and age, Japan, 2022

Table 3. Newly notified TB cases and rates by prefecture, Japan, 2022

Table 4. Newly notified TB cases and rates by major city, Japan, 2022

Table 5. LTBI cases and rates by sex and age, Japan, 2022

Table 6. LTBI cases and rates by prefecture, Japan, 2022

Table 7. LTBI cases and rates by major city, Japan, 2022

Figure 1. Number of newly notified TB cases by month, Japan, 2019-2022

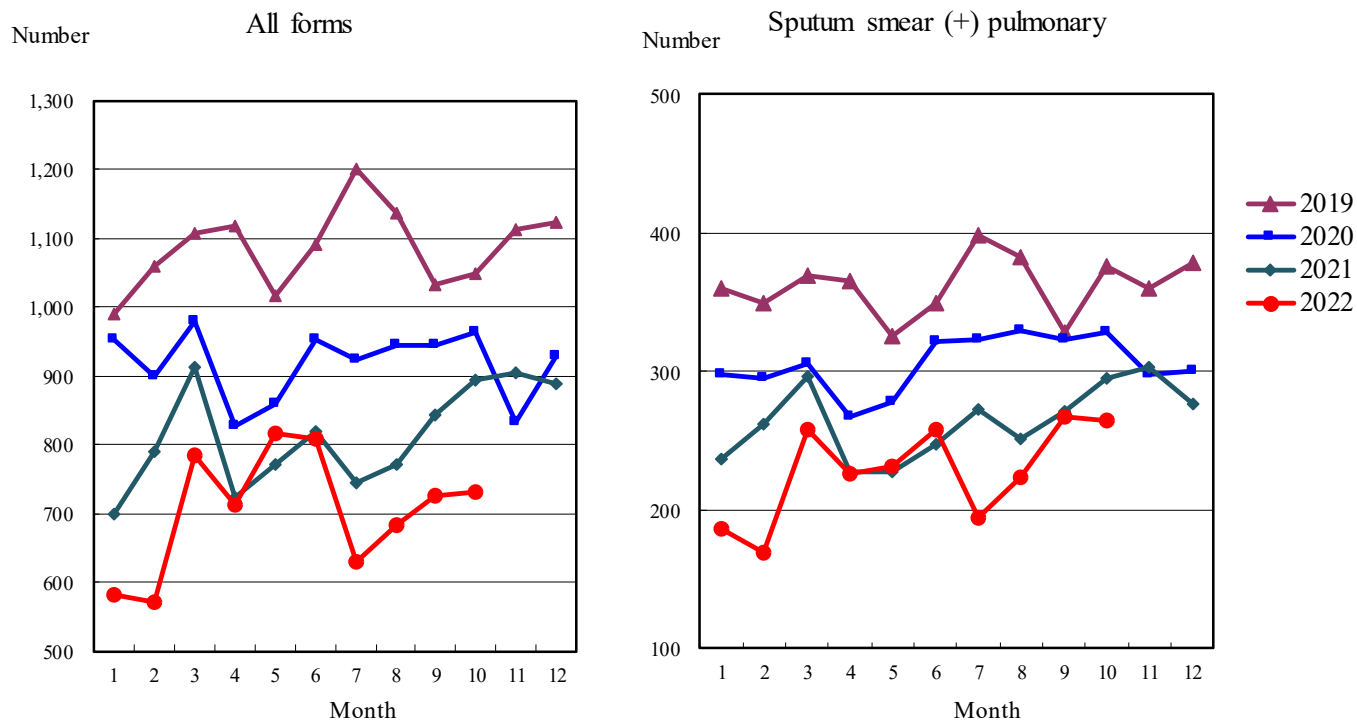


Figure 2. Newly notified TB patients by sex and age, Japan, summation (Jan.-Oct.) 2022

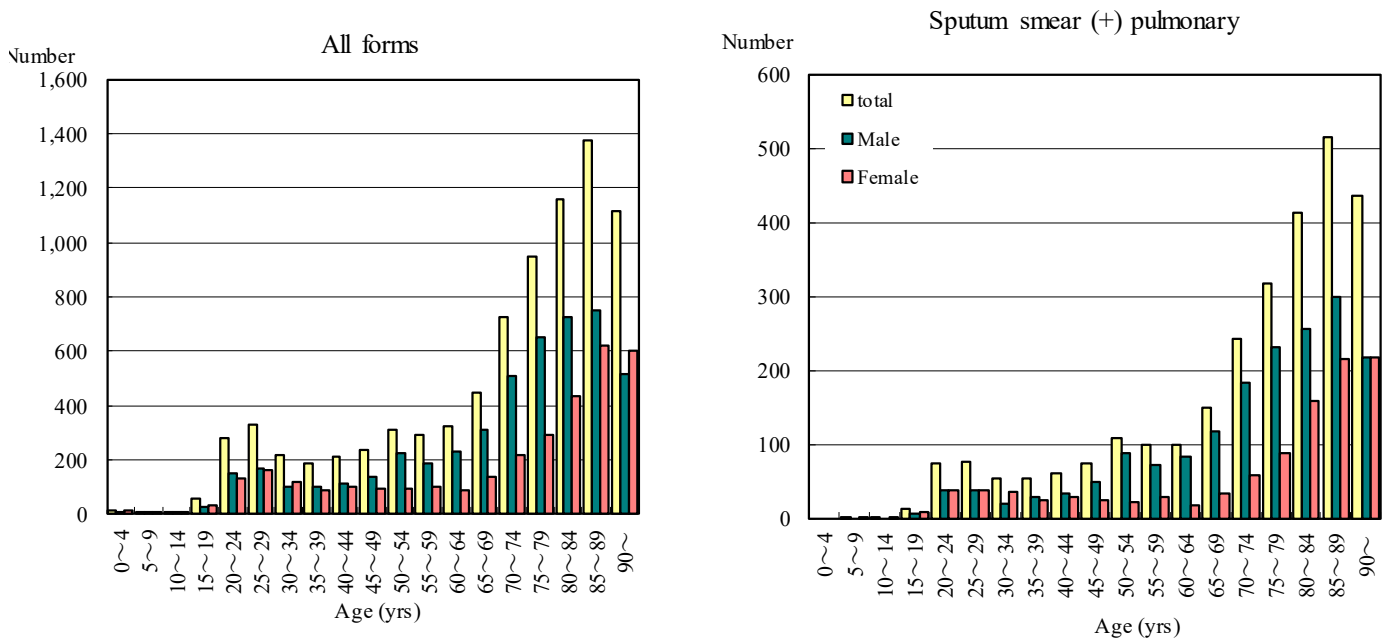


Figure 3. Notification rate of TB cases by sex and age, Japan, summation (Jan.-Oct.) 2022

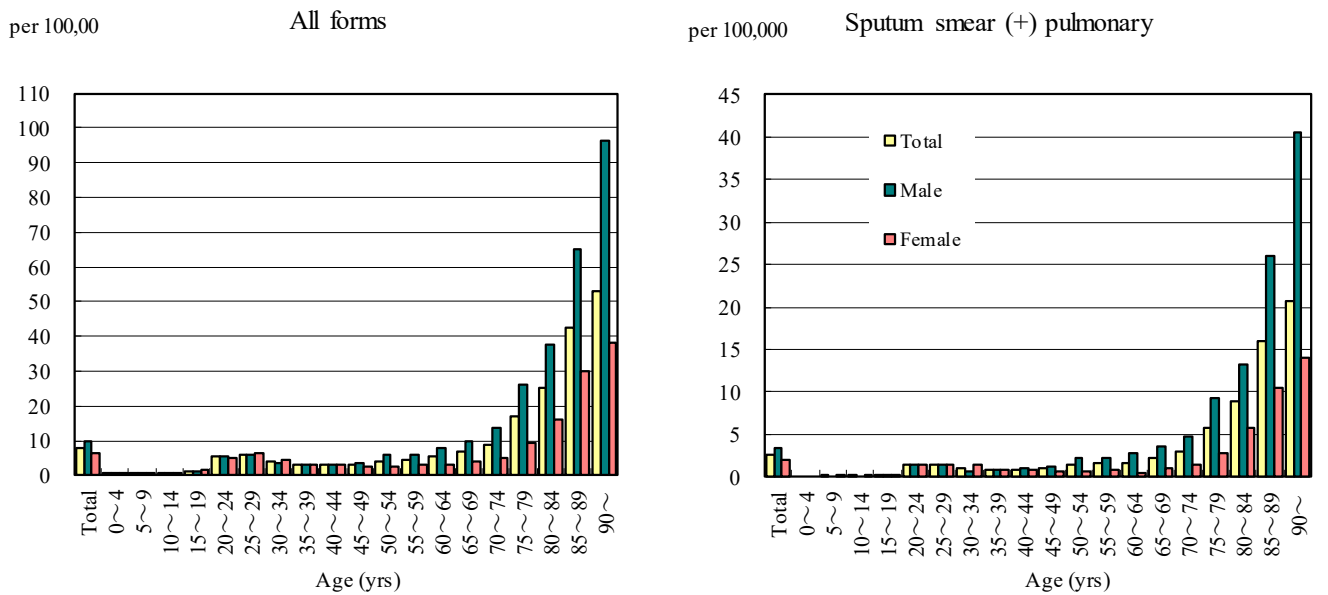


Figure 4. Notification rates of TB by prefecture, Japan, summation (Jan.-Oct.) 2022

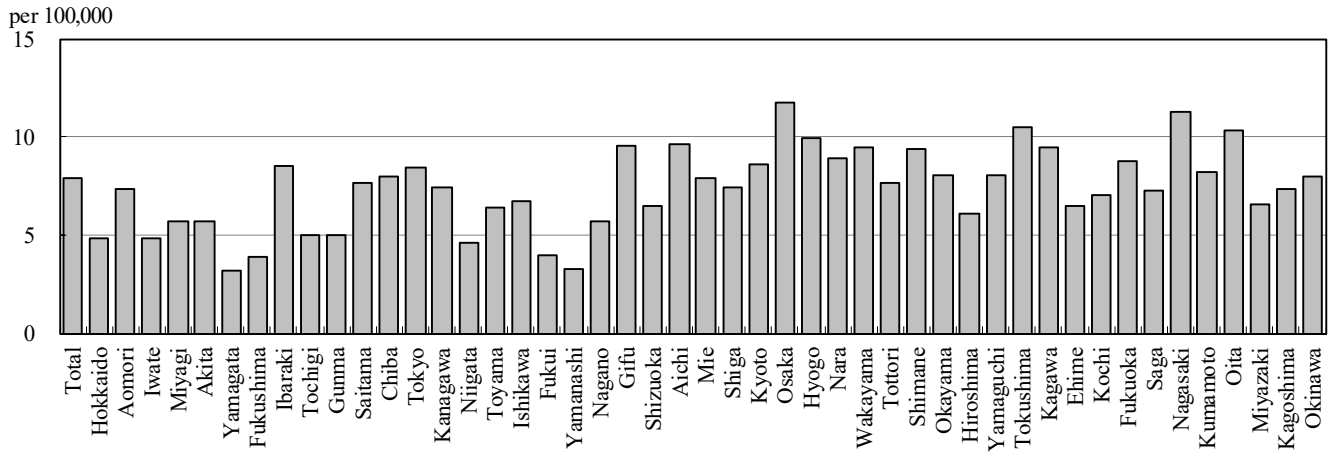


Figure 5. Notification rates of TB major city, Japan, summation (Jan.-Oct.) 2022

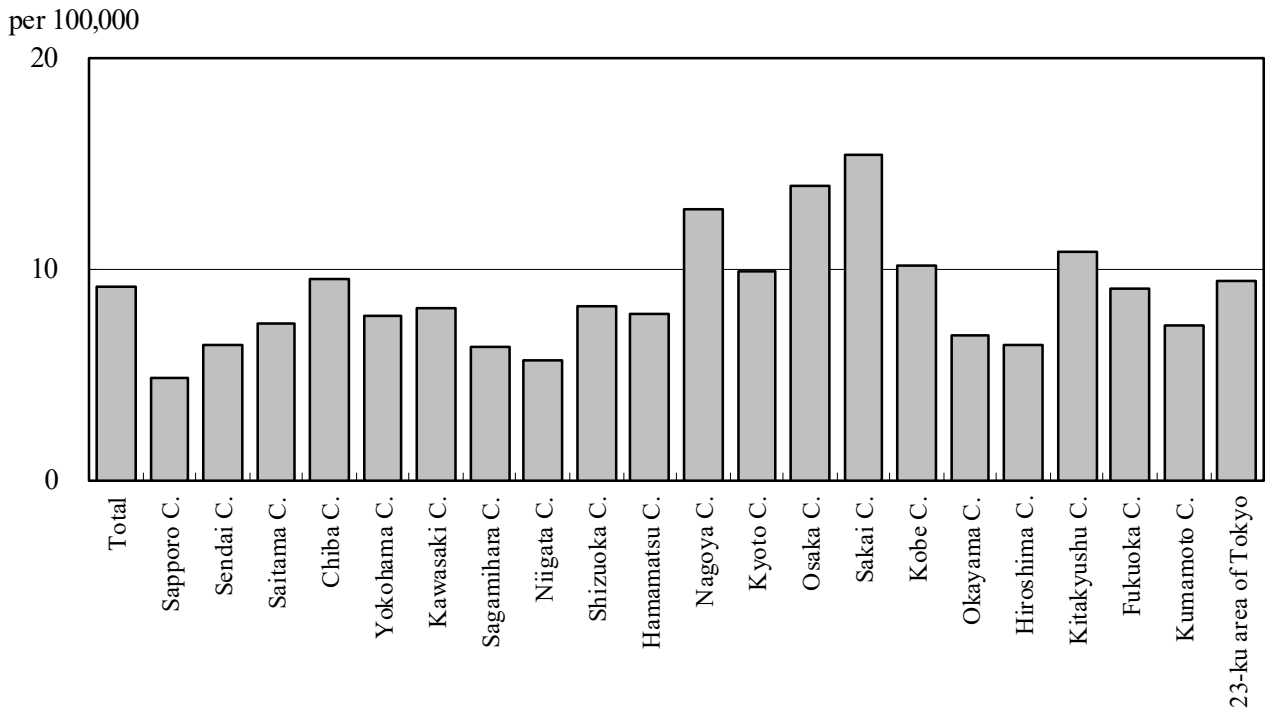


Figure 6. Number of LTBI, Japan, 2019-2022

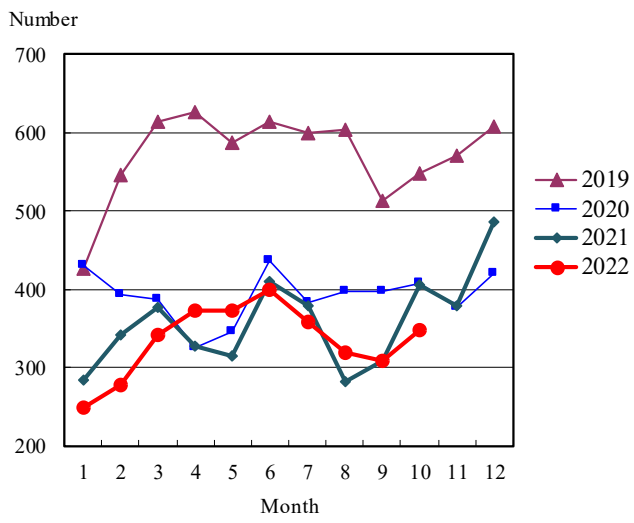


Figure 7. Number of LTBI by sex and age group, Japan, summation (Jan.-Oct.) 2022

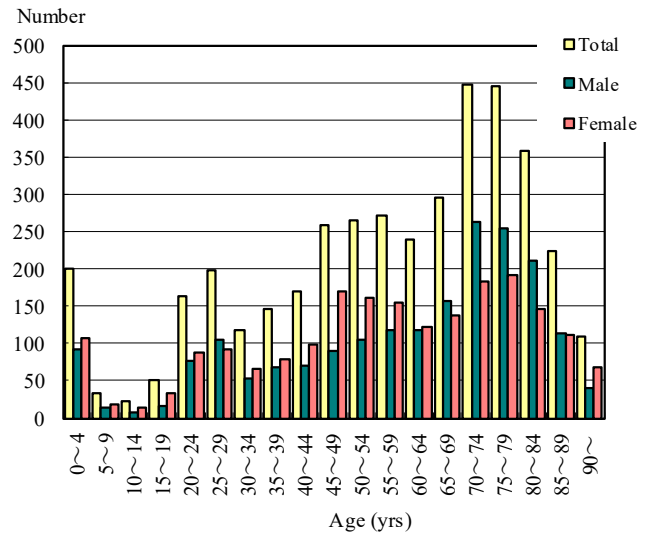


Table 1. Newly notified TB cases and rates by sex and age, Japan, 2022

	Oct.			Summation (Jan.-Oct.)			Notification rate (per 100,000)		
	Total	Male	Female	Total	Male	Female	Total	Male	Female
Total	730	435	295	8,242	4,914	3,328	7.9	9.7	6.2
0~4	3	3	0	16	4	12	0.4	0.2	0.7
5~9	2	1	1	6	2	4	0.1	0.1	0.2
10~14	1	1	0	4	2	2	0.1	0.1	0.1
15~19	5	1	4	58	26	32	1.2	1.1	1.4
20~24	23	13	10	281	150	131	5.4	5.6	5.1
25~29	24	12	12	327	167	160	6.2	6.1	6.2
30~34	18	9	9	219	102	117	4.0	3.7	4.4
35~39	10	5	5	185	98	87	3.0	3.1	2.9
40~44	19	9	10	212	112	100	3.1	3.2	3.0
45~49	21	13	8	234	138	96	2.9	3.4	2.4
50~54	19	11	8	314	222	92	4.1	5.7	2.4
55~59	30	17	13	291	189	102	4.5	5.8	3.1
60~64	31	18	13	321	232	89	5.2	7.6	2.9
65~69	38	28	10	448	311	137	6.8	9.8	4.1
70~74	82	57	25	728	511	217	9.0	13.4	5.1
75~79	74	56	18	949	654	295	17.0	26.2	9.5
80~84	94	56	38	1,158	724	434	25.0	37.6	16.0
85~89	131	76	55	1,375	753	622	42.6	65.1	30.0
90~	105	49	56	1,116	517	599	53.0	96.2	38.2

Temporary registrants = 41, Total of registrants and temporary registrants = 771

Rate: summation / (population\*10/12)\*100,000

Population: as of 1st Oct. 2021

Table 2. Newly notified sputum smear positive pulmonary TB cases and rates by sex and age, Japan, 2022

	Oct.			Summation (Jan.-Oct.)			Notification rate (per 100,000)		
	Total	Male	Female	Total	Male	Female	Total	Male	Female
Total	265	163	102	2,789	1,754	1,035	2.7	3.4	1.9
0~4	0	0	0	0	0	0	0.0	0.0	0.0
5~9	0	0	0	1	0	1	0.0	0.0	0.0
10~14	0	0	0	1	0	1	0.0	0.0	0.0
15~19	1	0	1	12	5	7	0.3	0.2	0.3
20~24	6	5	1	75	37	38	1.4	1.4	1.5
25~29	7	2	5	76	38	38	1.4	1.4	1.5
30~34	3	2	1	54	19	35	1.0	0.7	1.3
35~39	4	2	2	53	28	25	0.9	0.9	0.8
40~44	7	4	3	61	33	28	0.9	1.0	0.8
45~49	7	6	1	75	50	25	0.9	1.2	0.6
50~54	7	3	4	109	87	22	1.4	2.2	0.6
55~59	14	7	7	100	72	28	1.5	2.2	0.9
60~64	7	5	2	98	82	16	1.6	2.7	0.5
65~69	11	10	1	149	116	33	2.3	3.6	1.0
70~74	25	17	8	242	184	58	3.0	4.8	1.4
75~79	28	21	7	318	230	88	5.7	9.2	2.8
80~84	34	21	13	413	255	158	8.9	13.2	5.8
85~89	54	31	23	516	300	216	16.0	25.9	10.4
90~	50	27	23	436	218	218	20.7	40.6	13.9

Rate: summation / (population\*10/12)\*100,000

Population: as of 1st Oct. 2021

Table 3. Newly notified TB cases and rates by prefecture, Japan, 2022

	Oct.		Summation (Jan.-Oct.)		Notification rate (per 100,000)	
	Newly notified TB	Sputum smear (+)	Newly notified TB	Sputum smear (+)	Newly notified TB	Sputum smear (+)
Total	730	265	8,242	2,789	7.9	2.7
Hokkaido	20	8	209	68	4.8	1.6
Aomori	9	8	75	32	7.4	3.1
Iwate	2	0	48	16	4.8	1.6
Miyagi	12	7	108	53	5.7	2.8
Akita	4	2	45	13	5.7	1.7
Yamagata	1	0	28	10	3.2	1.1
Fukushima	3	2	59	24	3.9	1.6
Ibaraki	21	6	203	61	8.5	2.6
Tochigi	5	1	80	37	5.0	2.3
Gunma	2	2	80	33	5.0	2.1
Saitama	42	15	468	174	7.7	2.8
Chiba	39	13	417	120	8.0	2.3
Tokyo	89	39	989	364	8.5	3.1
Kanagawa	69	24	574	177	7.5	2.3
Niigata	1	0	83	25	4.6	1.4
Toyama	3	0	55	18	6.4	2.1
Ishikawa	4	2	63	22	6.7	2.3
Fukui	0	0	25	6	3.9	0.9
Yamanashi	1	1	22	8	3.3	1.2
Nagano	13	2	96	30	5.7	1.8
Gifu	14	5	156	49	9.5	3.0
Shizuoka	15	4	195	66	6.5	2.2
Aichi	55	17	601	170	9.6	2.7
Mie	7	2	115	39	7.9	2.7
Shiga	7	2	87	18	7.4	1.5
Kyoto	14	4	184	58	8.6	2.7
Osaka	47	24	859	331	11.7	4.5
Hyogo	47	17	448	162	9.9	3.6
Nara	11	6	98	42	8.9	3.8
Wakayama	9	3	72	21	9.5	2.8
Tottori	4	1	35	11	7.7	2.4
Shimane	7	1	52	17	9.4	3.1
Okayama	10	2	126	38	8.1	2.4
Hiroshima	19	9	141	57	6.1	2.5
Yamaguchi	6	5	89	28	8.0	2.5
Tokushima	5	0	62	13	10.4	2.2
Kagawa	5	0	74	29	9.4	3.7
Ehime	12	5	71	35	6.5	3.2
Kochi	4	1	40	16	7.0	2.8
Fukuoka	38	11	373	113	8.7	2.6
Saga	5	2	49	12	7.3	1.8
Nagasaki	8	2	122	35	11.3	3.2
Kumamoto	12	2	118	35	8.2	2.4
Oita	5	2	96	33	10.3	3.6
Miyazaki	7	3	58	16	6.6	1.8
Kagoshima	8	1	96	30	7.3	2.3
Okinawa	9	2	98	24	8.0	2.0

Rate: summation / (population\*10/12)\*100,000

Population: as of 1st Oct. 2021

Table 4. Newly notified TB cases and rates by major city, Japan, 2022

	Oct.		Summation (Jan.-Oct.)		Notification Rate (per 100,000)	
	Newly notified TB	Sputum Smear(+)	Newly notified TB	Sputum Smear(+)	Newly notified TB	Sputum Smear(+)
Total	230	82	2,855	983	9.1	3.1
Sapporo City	5	1	79	22	4.8	1.3
Sendai City	9	6	58	31	6.3	3.4
Saitama City	6	1	82	29	7.4	2.6
Chiba City	6	2	77	22	9.5	2.7
Yokohama City	29	8	243	81	7.7	2.6
Kawasaki City	9	1	104	28	8.1	2.2
Sagamihara City	4	1	38	11	6.3	1.8
Niigata City	0	0	37	12	5.7	1.8
Shizuoka City	6	3	47	17	8.2	3.0
Hamamatsu City	4	0	52	15	7.8	2.3
Nagoya City	26	10	248	79	12.8	4.1
Kyoto City	10	3	120	43	9.9	3.5
Osaka City	0	0	319	113	13.9	4.9
Sakai City	7	3	105	47	15.4	6.9
Kobe City	8	2	128	35	10.1	2.8
Okayama City	5	1	41	13	6.8	2.2
Hiroshima City	3	1	64	24	6.4	2.4
Kitakyushu City	10	2	84	22	10.8	2.8
Fukuoka City	11	6	122	39	9.0	2.9
Kumamoto City	4	1	45	16	7.3	2.6
23-ku area of Tokyo	68	30	762	284	9.4	3.5

Rate: summation / (population\*10/12)\*100,000

Population: as of 1st Oct. 2021

Major city: city with a population of one million or more.

Table 4 is a re-count of Table 3.

Table 5. LTBI cases and rates by sex and age, Japan, 2022

	Oct.			Summation (Jan.-Oct.)			(Ratio) LTBI/Newly notified cases		
	Total	Male	Female	Total	Male	Female	Total	Male	Female
Total	348	174	174	4,014	1,974	2,040	0.5	0.4	0.6
0~4	16	9	7	200	93	107	12.5	23.3	8.9
5~9	3	1	2	34	15	19	5.7	7.5	4.8
10~14	3	0	3	22	8	14	5.5	4.0	7.0
15~19	6	2	4	50	17	33	0.9	0.7	1.0
20~24	20	15	5	164	77	87	0.6	0.5	0.7
25~29	22	10	12	197	105	92	0.6	0.6	0.6
30~34	11	3	8	119	54	65	0.5	0.5	0.6
35~39	14	5	9	146	68	78	0.8	0.7	0.9
40~44	13	7	6	169	70	99	0.8	0.6	1.0
45~49	15	6	9	259	90	169	1.1	0.7	1.8
50~54	32	13	19	266	104	162	0.8	0.5	1.8
55~59	24	9	15	271	117	154	0.9	0.6	1.5
60~64	18	5	13	240	117	123	0.7	0.5	1.4
65~69	19	11	8	295	157	138	0.7	0.5	1.0
70~74	26	16	10	446	264	182	0.6	0.5	0.8
75~79	35	23	12	445	254	191	0.5	0.4	0.6
80~84	37	25	12	358	211	147	0.3	0.3	0.3
85~89	23	10	13	224	113	111	0.2	0.2	0.2
90~	11	4	7	109	40	69	0.1	0.1	0.1

LTBI: latent TB Infection

Number of LTBI is not included in the newly notified TB patients



Table 6. LTBI cases and rates by prefecture, Japan, 2022

	Oct.	Summation (Jan.-Oct.)	
	LTBI	LTBI	(Ratio) LTBI /new TB
Total	348	4,014	0.49
Hokkaido	7	195	0.93
Aomori	6	36	0.48
Iwate	6	49	1.02
Miyagi	13	65	0.60
Akita	1	11	0.24
Yamagata	0	13	0.46
Fukushima	3	30	0.51
Ibaraki	3	107	0.53
Tochigi	4	17	0.21
Gunma	0	39	0.49
Saitama	25	231	0.49
Chiba	19	213	0.51
Tokyo	44	525	0.53
Kanagawa	22	252	0.44
Niigata	1	52	0.63
Toyama	3	28	0.51
Ishikawa	3	41	0.65
Fukui	0	10	0.40
Yamanashi	0	12	0.55
Nagano	10	72	0.75
Gifu	4	60	0.38
Shizuoka	12	83	0.43
Aichi	25	268	0.45
Mie	5	20	0.17
Shiga	0	29	0.33
Kyoto	3	82	0.45
Osaka	21	378	0.44
Hyogo	26	182	0.41
Nara	3	29	0.30
Wakayama	1	21	0.29
Tottori	1	15	0.43
Shimane	1	14	0.27
Okayama	2	81	0.64
Hiroshima	12	99	0.70
Yamaguchi	1	38	0.43
Tokushima	2	12	0.19
Kagawa	4	32	0.43
Ehime	4	20	0.28
Kochi	1	14	0.35
Fukuoka	27	243	0.65
Saga	1	17	0.35
Nagasaki	2	33	0.27
Kumamoto	5	41	0.35
Oita	2	39	0.41
Miyazaki	0	18	0.31
Kagoshima	2	38	0.40
Okinawa	11	110	1.12

LTBI: Latent TB Infection

Number of LTBI is not included in the newly notified TB patients.

Table 7. LTBI cases and rates by major city, Japan, 2022

	Oct.	Summation (Jan.-Oct.)	
	LTBI	LTBI	(Ratio) LTBI / new TB
Total	98	1,427	0.50
Sapporo City	2	71	0.90
Sendai City	7	37	0.64
Saitama City	4	28	0.34
Chiba City	1	41	0.53
Yokohama City	5	104	0.43
Kawasaki City	3	58	0.56
Sagamihara City	3	19	0.50
Niigata City	0	23	0.62
Shizuoka City	0	17	0.36
Hamamatsu City	1	18	0.35
Nagoya City	2	100	0.40
Kyoto City	1	59	0.49
Osaka City	0	171	0.54
Sakai City	8	45	0.43
Kobe City	9	55	0.43
Okayama City	0	46	1.12
Hiroshima City	6	29	0.45
Kitakyushu City	6	49	0.58
Fukuoka City	9	75	0.61
Kumamoto City	0	13	0.29
23-ku area of Tokyo	31	369	0.48

LTBI: Latent TB Infection

Number of LTBI is not included in the newly notified TB patients,

Major city: city with a population of one million or more

Table 7 is a re-count of Table 6