



Monthly Report of Tuberculosis Surveillance, Japan - February, 2023

The reporting and recording of tuberculosis (TB) and Latent TB Infection (LTBI) are managed at public health centers (PHCs) by the nationwide computerized TB surveillance system in Japan. A monthly report is compiled from the database automatically and regularly on 4th Friday of the next month, and an annual report is also produced much like the monthly report, but with sufficient time for data correction.

Tables and figures shown in the monthly reports are as follows.

Figures

Figure 1. Number of newly notified TB cases by month, Japan, 2020-2023

Figure 2. Newly notified TB cases by sex and age, Japan, summation (Jan. -Feb.) 2023

Figure 3. Notification rate of TB cases by sex and age, Japan, summation (Jan. -Feb.) 2023

Figure 4. Notification rate of TB by prefecture, Japan, summation (Jan. -Feb.) 2023

Figure 5. Notification rate of TB by major city, Japan, summation (Jan. -Feb.) 2023

Figure 6. Number of LTBI, Japan, 2020-2023

Figure 7. Number of LTBI by sex and age group, Japan, summation (Jan. -Feb.) 2023

Tables

Table 1. Newly notified TB cases and rates by sex and age, Japan, 2023

Table 2. Newly notified sputum smear positive pulmonary TB cases and rates by sex and age, Japan, 2023

Table 3. Newly notified TB cases and rates by prefecture, Japan, 2023

Table 4. Newly notified TB cases and rates by major city, Japan, 2023

Table 5. LTBI cases and rates by sex and age, Japan, 2023

Table 6. LTBI cases and rates by prefecture, Japan, 2023

Table 7. LTBI cases and rates by major city, Japan, 2023

Figure 1. Number of newly notified TB cases by month, Japan, 2020-2023

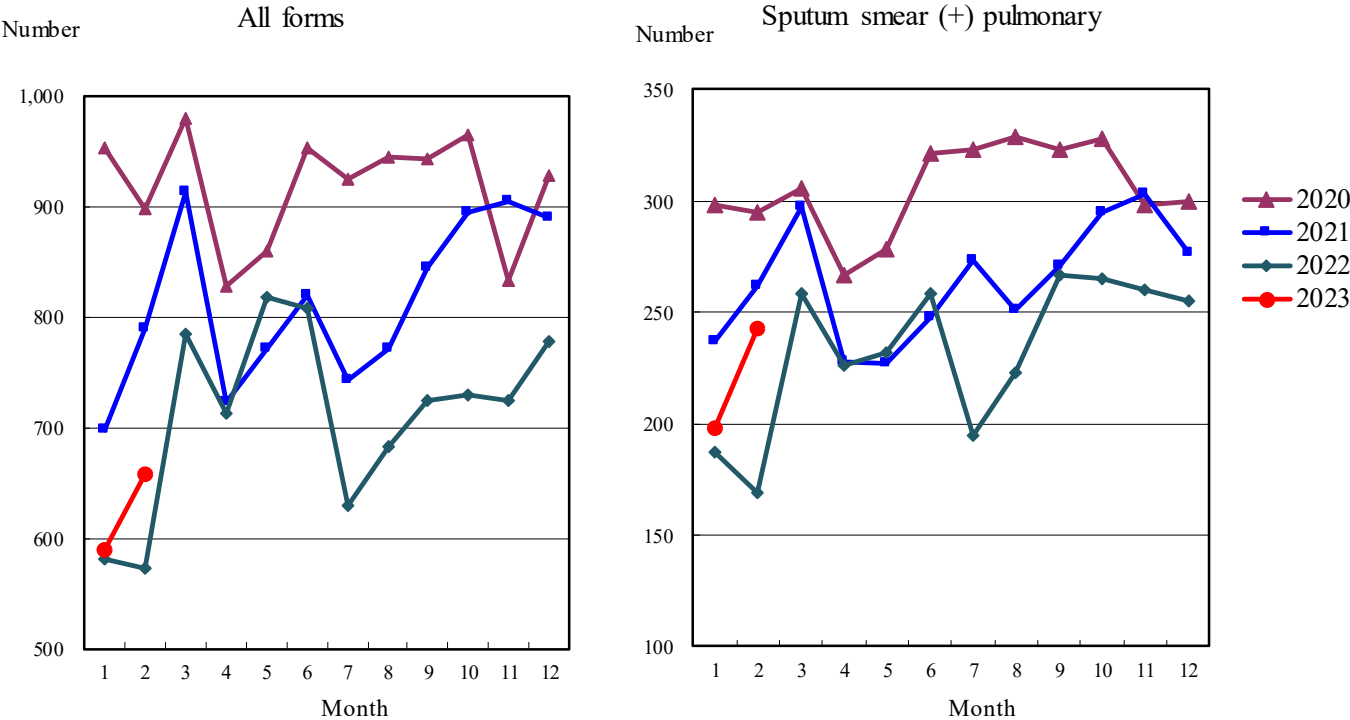


Figure 2. Newly notified TB patients by sex and age, Japan, summation (Jan.-Feb.) 2023

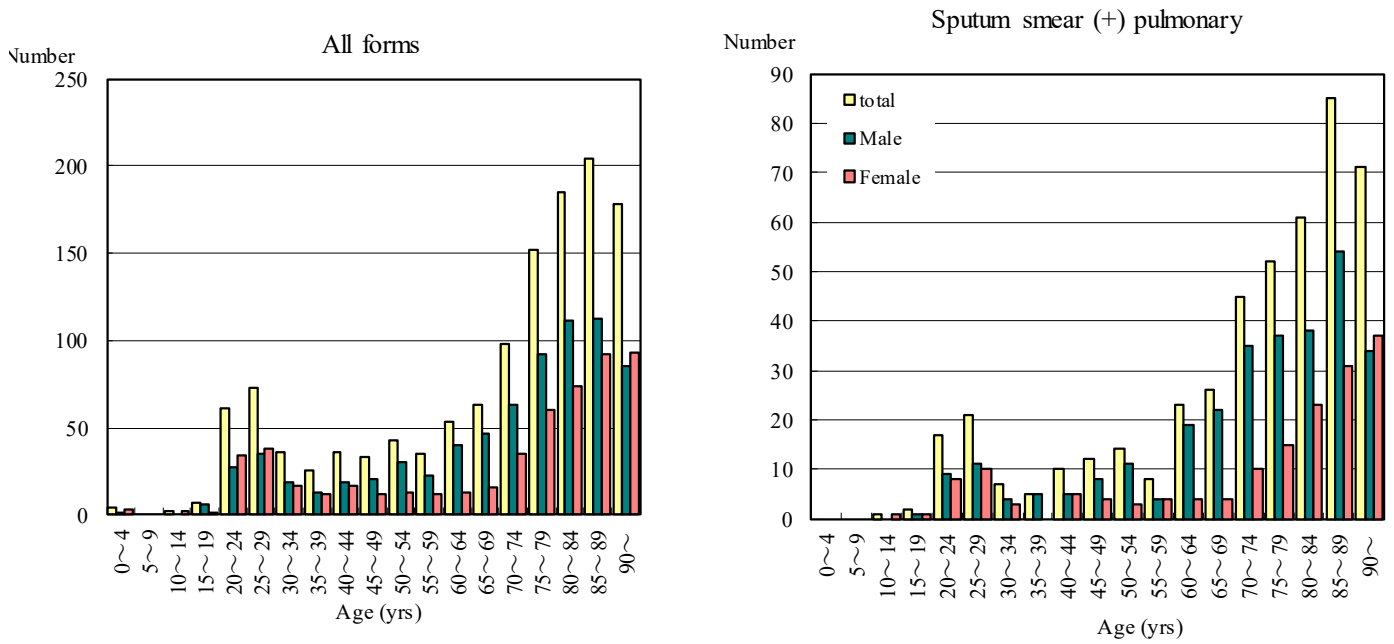


Figure 3. Notification rate of TB cases by sex and age, Japan, summation (Jan.-Feb.) 2023

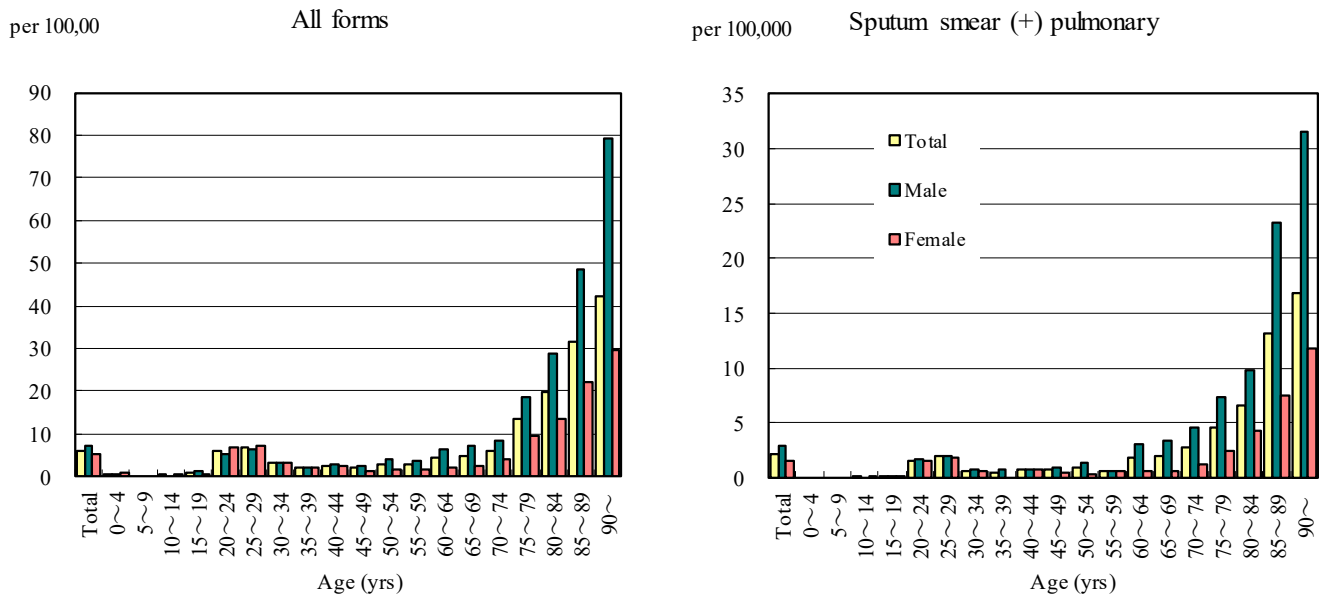


Figure 4. Notification rates of TB by prefecture, Japan, summation (Jan.-Feb.) 2023

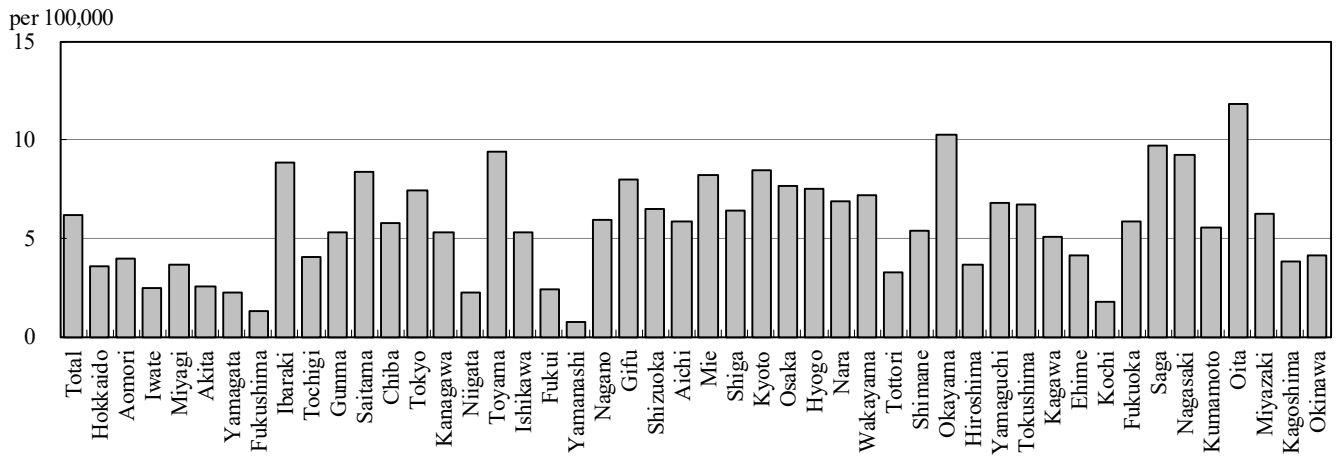


Figure 5. Notification rates of TB major city, Japan, summation (Jan.-Feb.) 2023

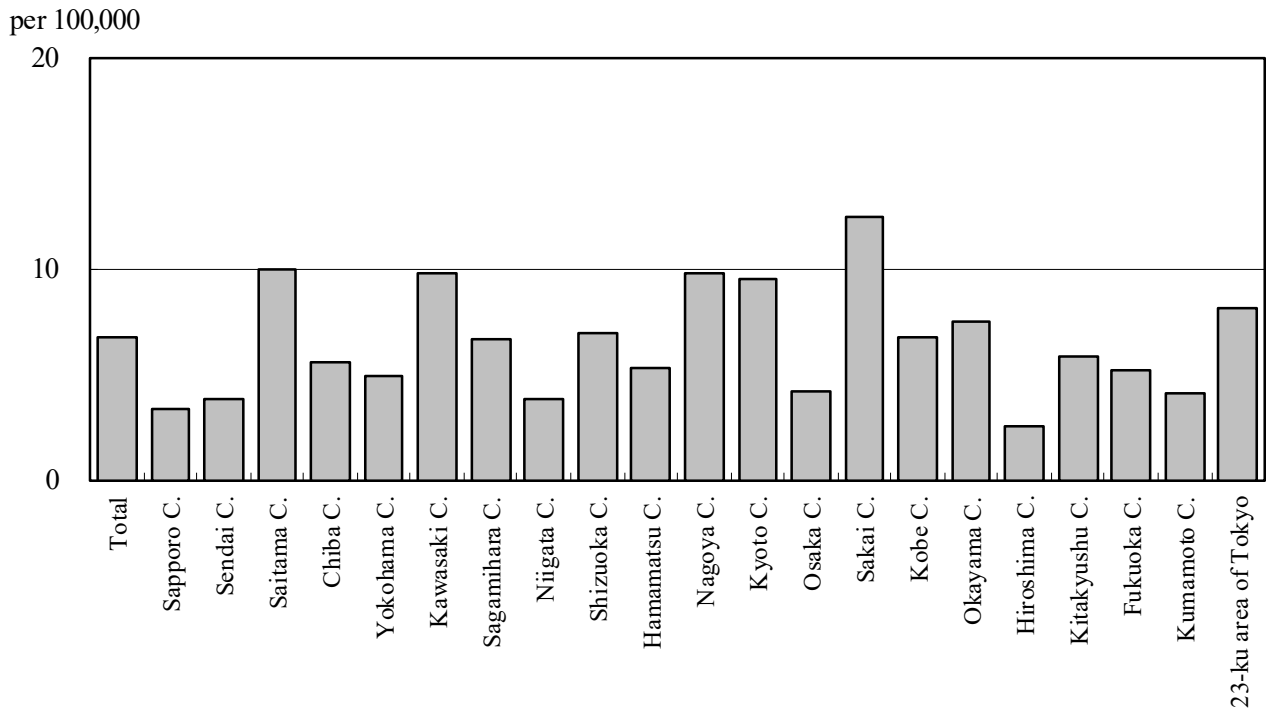


Figure 6. Number of LTBI, Japan, 2020-2023

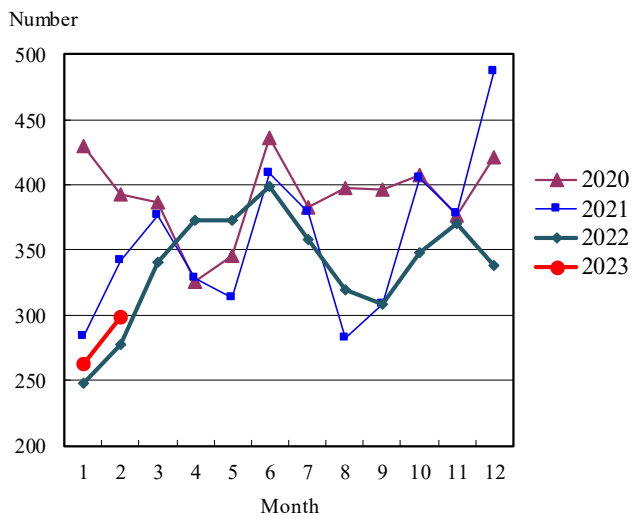


Figure 7. Number of LTBI by sex and age group, Japan, summation (Jan.-Feb.) 2023

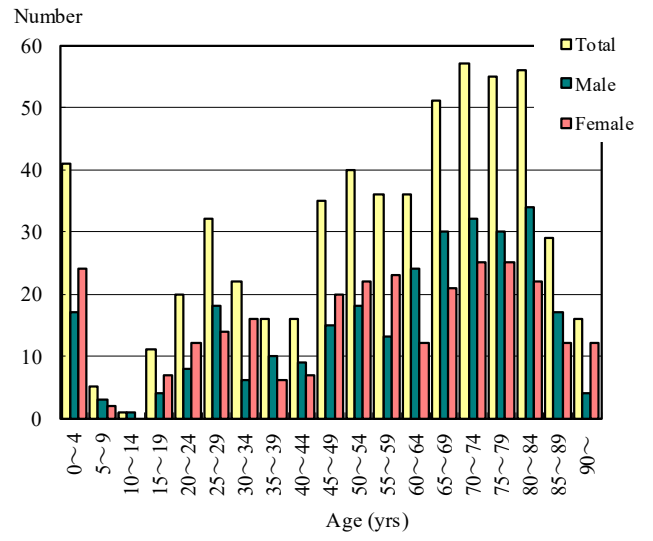


Table 1. Newly notified TB cases and rates by sex and age, Japan, 2023

	Jan.			Summation (Jan.-Feb.)			Notification rate (per 100,000)		
	Total	Male	Female	Total	Male	Female	Total	Male	Female
Total	657	369	288	1,288	744	544	6.2	7.3	5.1
0~4	1	1	0	4	1	3	0.5	0.3	0.8
5~9	0	0	0	0	0	0	0.0	0.0	0.0
10~14	1	0	1	2	0	2	0.2	0.0	0.5
15~19	4	3	1	7	6	1	0.8	1.3	0.2
20~24	30	11	19	61	27	34	5.8	5.1	6.7
25~29	40	19	21	73	35	38	6.9	6.4	7.3
30~34	25	14	11	36	19	17	3.3	3.4	3.2
35~39	12	4	8	25	13	12	2.0	2.1	2.0
40~44	11	9	2	36	19	17	2.6	2.8	2.5
45~49	20	12	8	33	21	12	2.0	2.6	1.5
50~54	27	20	7	43	30	13	2.8	3.9	1.7
55~59	18	10	8	35	23	12	2.7	3.5	1.8
60~64	27	21	6	53	40	13	4.3	6.6	2.1
65~69	32	22	10	63	47	16	4.8	7.4	2.4
70~74	47	31	16	98	63	35	6.1	8.3	4.1
75~79	71	46	25	152	92	60	13.6	18.5	9.7
80~84	97	54	43	185	111	74	20.0	28.8	13.7
85~89	101	55	46	204	112	92	31.6	48.4	22.2
90~	93	37	56	178	85	93	42.3	79.1	29.7

Temporary registrants = 28, Total of registrants and temporary registrants = 685

Rate: summation / (population*2/12)*100,000

Population: as of 1st Oct. 2021

Table 2. Newly notified sputum smear positive pulmonary TB cases and rates by sex and age, Japan, 2023

	Jan.			Summation (Jan.-Feb.)			Notification rate (per 100,000)		
	Total	Male	Female	Total	Male	Female	Total	Male	Female
Total	243	154	89	460	297	163	2.2	2.9	1.5
0~4	0	0	0	0	0	0	0.0	0.0	0.0
5~9	0	0	0	0	0	0	0.0	0.0	0.0
10~14	0	0	0	1	0	1	0.1	0.0	0.2
15~19	1	0	1	2	1	1	0.2	0.2	0.2
20~24	5	1	4	17	9	8	1.6	1.7	1.6
25~29	12	7	5	21	11	10	2.0	2.0	1.9
30~34	6	3	3	7	4	3	0.6	0.7	0.6
35~39	0	0	0	5	5	0	0.4	0.8	0.0
40~44	3	3	0	10	5	5	0.7	0.7	0.7
45~49	9	7	2	12	8	4	0.7	1.0	0.5
50~54	11	9	2	14	11	3	0.9	1.4	0.4
55~59	5	2	3	8	4	4	0.6	0.6	0.6
60~64	13	11	2	23	19	4	1.9	3.1	0.6
65~69	12	10	2	26	22	4	2.0	3.5	0.6
70~74	23	16	7	45	35	10	2.8	4.6	1.2
75~79	25	20	5	52	37	15	4.6	7.4	2.4
80~84	32	20	12	61	38	23	6.6	9.9	4.2
85~89	51	29	22	85	54	31	13.2	23.4	7.5
90~	35	16	19	71	34	37	16.9	31.6	11.8

Rate: summation / (population*2/12)*100,000

Population: as of 1st Oct. 2021

Table 3. Newly notified TB cases and rates by prefecture, Japan, 2023

	Jan.		Summation (Jan.-Feb.)		Notification rate (per 100,000)	
	Newly notified TB	Sputum smear (+)	Newly notified TB	Sputum smear (+)	Newly notified TB	Sputum smear (+)
Total	657	243	1,288	460	6.2	2.2
Hokkaido	15	7	31	9	3.6	1.0
Aomori	5	2	8	3	3.9	1.5
Iwate	0	0	5	2	2.5	1.0
Miyagi	6	1	14	1	3.7	0.3
Akita	1	0	4	1	2.5	0.6
Yamagata	1	0	4	1	2.3	0.6
Fukushima	3	1	4	2	1.3	0.7
Ibaraki	21	4	42	7	8.8	1.5
Tochigi	6	2	13	5	4.1	1.6
Gunma	9	1	17	4	5.3	1.2
Saitama	51	24	102	39	8.3	3.2
Chiba	28	12	60	25	5.7	2.4
Tokyo	96	37	173	65	7.4	2.8
Kanagawa	43	22	82	37	5.3	2.4
Niigata	4	1	8	3	2.2	0.8
Toyama	7	3	16	7	9.4	4.1
Ishikawa	2	1	10	2	5.3	1.1
Fukui	0	0	3	1	2.4	0.8
Yamanashi	1	0	1	0	0.7	0.0
Nagano	10	5	20	13	5.9	3.8
Gifu	12	6	26	10	8.0	3.1
Shizuoka	17	5	39	14	6.5	2.3
Aichi	44	14	73	26	5.8	2.1
Mie	15	2	24	4	8.2	1.4
Shiga	4	0	15	2	6.4	0.9
Kyoto	24	7	36	11	8.4	2.6
Osaka	45	20	112	42	7.6	2.9
Hyogo	38	14	68	27	7.5	3.0
Nara	8	3	15	6	6.8	2.7
Wakayama	7	4	11	6	7.2	3.9
Tottori	2	0	3	0	3.3	0.0
Shimane	3	0	6	2	5.4	1.8
Okayama	18	3	32	10	10.2	3.2
Hiroshima	8	2	17	8	3.7	1.7
Yamaguchi	7	2	15	5	6.8	2.3
Tokushima	7	1	8	1	6.7	0.8
Kagawa	5	2	8	4	5.1	2.5
Ehime	4	2	9	3	4.1	1.4
Kochi	1	0	2	0	1.8	0.0
Fukuoka	28	14	50	18	5.9	2.1
Saga	4	1	13	4	9.7	3.0
Nagasaki	9	3	20	5	9.3	2.3
Kumamoto	9	4	16	8	5.6	2.8
Oita	11	8	22	11	11.8	5.9
Miyazaki	5	0	11	2	6.2	1.1
Kagoshima	8	3	10	3	3.8	1.1
Okinawa	5	0	10	1	4.1	0.4

Rate: summation / (population*2/12)*100,000

Population: as of 1st Oct. 2021

Table 4. Newly notified TB cases and rates by major city, Japan, 2023

	Jan.		Summation (Jan.-Feb.)		Notification Rate (per 100,000)	
	Newly notified TB	Sputum Smear(+)	Newly notified TB	Sputum Smear(+)	Newly notified TB	Sputum Smear(+)
Total	220	80	420	152	6.7	2.4
Sapporo City	6	2	11	2	3.3	0.6
Sendai City	4	1	7	1	3.8	0.5
Saitama City	12	6	22	10	9.9	4.5
Chiba City	4	2	9	5	5.5	3.1
Yokohama City	16	10	31	16	4.9	2.5
Kawasaki City	14	3	25	8	9.7	3.1
Sagamihara City	4	3	8	5	6.6	4.1
Niigata City	3	1	5	2	3.8	1.5
Shizuoka City	4	1	8	4	7.0	3.5
Hamamatsu City	5	2	7	2	5.3	1.5
Nagoya City	21	8	38	15	9.8	3.9
Kyoto City	15	4	23	7	9.5	2.9
Osaka City	0	0	19	4	4.1	0.9
Sakai City	9	5	17	9	12.4	6.6
Kobe City	7	2	17	6	6.7	2.4
Okayama City	4	0	9	2	7.5	1.7
Hiroshima City	2	0	5	3	2.5	1.5
Kitakyushu City	6	1	9	1	5.8	0.6
Fukuoka City	9	4	14	6	5.2	2.2
Kumamoto City	3	1	5	1	4.1	0.8
23-ku area of Tokyo	72	24	131	43	8.1	2.7

Rate: summation / (population*2/12)*100,000

Population: as of 1st Oct. 2021

Major city: city with a population of one million or more.

Table 4 is a re-count of Table 3.

Table 5. LTBI cases and rates by sex and age, Japan, 2023

	Jan.			Summation (Jan.-Feb.)			(Ratio) LTBI/Newly notified cases		
	Total	Male	Female	Total	Male	Female	Total	Male	Female
Total	299	145	154	575	293	282	0.4	0.4	0.5
0~4	23	9	14	41	17	24	10.3	17.0	8.0
5~9	1	1	0	5	3	2	-	-	-
10~14	0	0	0	1	1	0	0.5	-	0.0
15~19	5	3	2	11	4	7	1.6	0.7	7.0
20~24	11	6	5	20	8	12	0.3	0.3	0.4
25~29	20	10	10	32	18	14	0.4	0.5	0.4
30~34	10	1	9	22	6	16	0.6	0.3	0.9
35~39	9	5	4	16	10	6	0.6	0.8	0.5
40~44	9	4	5	16	9	7	0.4	0.5	0.4
45~49	15	5	10	35	15	20	1.1	0.7	1.7
50~54	14	4	10	40	18	22	0.9	0.6	1.7
55~59	19	7	12	36	13	23	1.0	0.6	1.9
60~64	21	13	8	36	24	12	0.7	0.6	0.9
65~69	24	13	11	51	30	21	0.8	0.6	1.3
70~74	36	21	15	57	32	25	0.6	0.5	0.7
75~79	22	10	12	55	30	25	0.4	0.3	0.4
80~84	31	19	12	56	34	22	0.3	0.3	0.3
85~89	20	12	8	29	17	12	0.1	0.2	0.1
90~	9	2	7	16	4	12	0.1	0.0	0.1

LTBI: latent TB Infection

Number of LTBI is not included in the newly notified TB patients

Table 6. LTBI cases and rates by prefecture, Japan, 2023

	Jan.	Summation (Jan.-Feb.)	
	LTBI	LTBI	(Ratio) LTBI / new TB
Total	299	575	0.45
Hokkaido	14	22	0.71
Aomori	2	6	0.75
Iwate	4	5	1.00
Miyagi	11	11	0.79
Akita	0	3	0.75
Yamagata	0	1	0.25
Fukushima	2	3	0.75
Ibaraki	6	18	0.43
Tochigi	1	3	0.23
Gunma	1	2	0.12
Saitama	18	40	0.39
Chiba	21	40	0.67
Tokyo	54	86	0.50
Kanagawa	21	44	0.54
Niigata	0	2	0.25
Toyama	4	5	0.31
Ishikawa	2	5	0.50
Fukui	2	2	0.67
Yamanashi	1	2	2.00
Nagano	2	7	0.35
Gifu	4	4	0.15
Shizuoka	4	7	0.18
Aichi	13	31	0.42
Mie	2	4	0.17
Shiga	3	3	0.20
Kyoto	4	19	0.53
Osaka	18	45	0.40
Hyogo	12	22	0.32
Nara	2	5	0.33
Wakayama	2	3	0.27
Tottori	0	0	0.00
Shimane	1	2	0.33
Okayama	3	8	0.25
Hiroshima	11	18	1.06
Yamaguchi	6	7	0.47
Tokushima	2	2	0.25
Kagawa	3	6	0.75
Ehime	4	5	0.56
Kochi	0	3	1.50
Fukuoka	15	24	0.48
Saga	1	1	0.08
Nagasaki	5	11	0.55
Kumamoto	2	5	0.31
Oita	5	10	0.45
Miyazaki	1	6	0.55
Kagoshima	3	7	0.70
Okinawa	7	10	1.00

LTBI: Latent TB Infection

Number of LTBI is not included in the newly notified TB patients.

Table 7. LTBI cases and rates by major city, Japan, 2023

	Jan.	Summation (Jan.-Feb.)	
	LTBI	LTBI	(Ratio) LTBI / new TB
Total	92	176	0.42
Sapporo City	2	5	0.45
Sendai City	5	5	0.71
Saitama City	1	3	0.14
Chiba City	2	4	0.44
Yokohama City	6	15	0.48
Kawasaki City	5	8	0.32
Sagamihara City	1	2	0.25
Niigata City	0	1	0.20
Shizuoka City	0	0	0.00
Hamamatsu City	3	4	0.57
Nagoya City	8	17	0.45
Kyoto City	2	8	0.35
Osaka City	0	4	0.21
Sakai City	1	4	0.24
Kobe City	0	4	0.24
Okayama City	1	5	0.56
Hiroshima City	2	4	0.80
Kitakyushu City	2	3	0.33
Fukuoka City	7	10	0.71
Kumamoto City	0	1	0.20
23-ku area of Tokyo	44	69	0.53

LTBI: Latent TB Infection

Number of LTBI is not included in the newly notified TB patients,

Major city: city with a population of one million or more

Table 7 is a re-count of Table 6