



Monthly Report of Tuberculosis Surveillance, Japan - May, 2023

The reporting and recording of tuberculosis (TB) and Latent TB Infection (LTBI) are managed at public health centers (PHCs) by the nationwide computerized TB surveillance system in Japan. A monthly report is compiled from the database automatically and regularly on 4th Friday of the next month, and an annual report is also produced much like the monthly report, but with sufficient time for data correction.

Tables and figures shown in the monthly reports are as follows.

Figures

Figure 1. Number of newly notified TB cases by month, Japan, 2020-2023

Figure 2. Newly notified TB cases by sex and age, Japan, summation (Jan. -May.) 2023

Figure 3. Notification rate of TB cases by sex and age, Japan, summation (Jan. -May.) 2023

Figure 4. Notification rate of TB by prefecture, Japan, summation (Jan. -May.) 2023

Figure 5. Notification rate of TB by major city, Japan, summation (Jan. -May.) 2023

Figure 6. Number of LTBI, Japan, 2020-2023

Figure 7. Number of LTBI by sex and age group, Japan, summation (Jan. -May.) 2023

Tables

Table 1. Newly notified TB cases and rates by sex and age, Japan, 2023

Table 2. Newly notified sputum smear positive pulmonary TB cases and rates by sex and age, Japan, 2023

Table 3. Newly notified TB cases and rates by prefecture, Japan, 2023

Table 4. Newly notified TB cases and rates by major city, Japan, 2023

Table 5. LTBI cases and rates by sex and age, Japan, 2023

Table 6. LTBI cases and rates by prefecture, Japan, 2023

Table 7. LTBI cases and rates by major city, Japan, 2023

Figure 1. Number of newly notified TB cases by month, Japan, 2020-2023

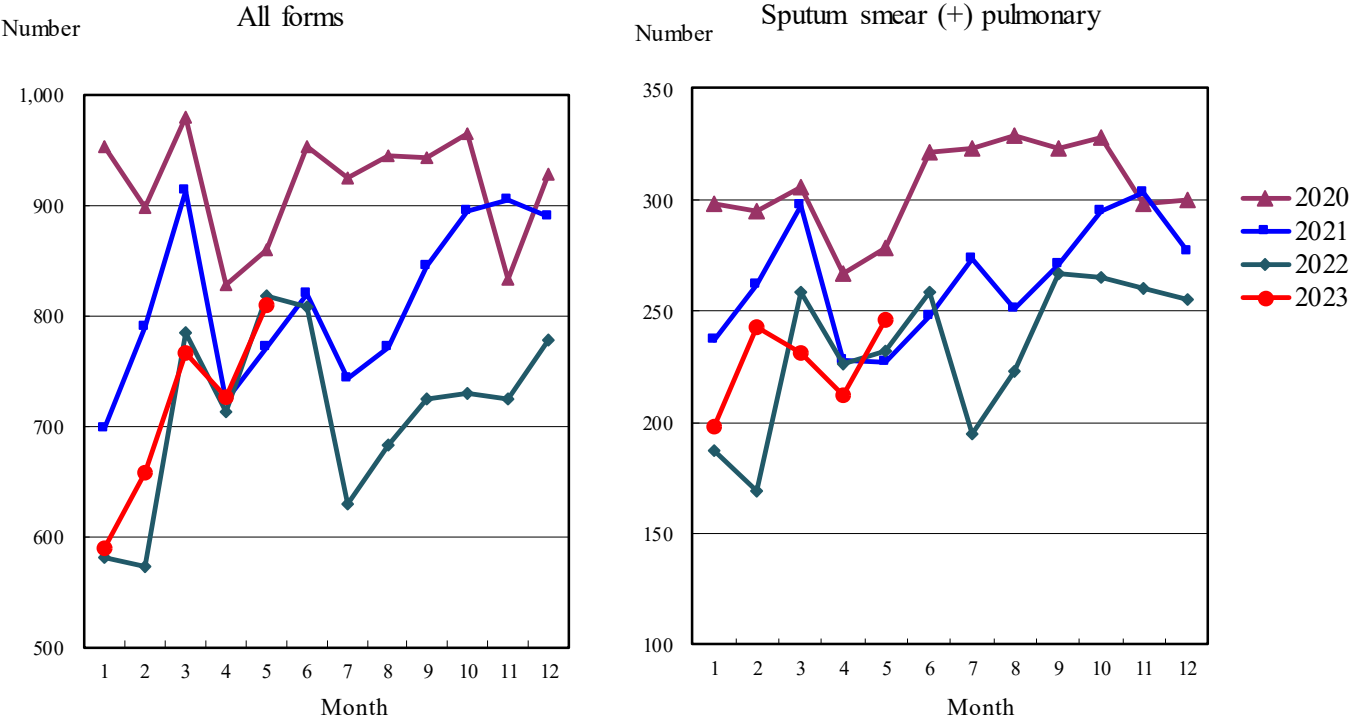


Figure 2. Newly notified TB patients by sex and age, Japan, summation (Jan.-May.) 2023

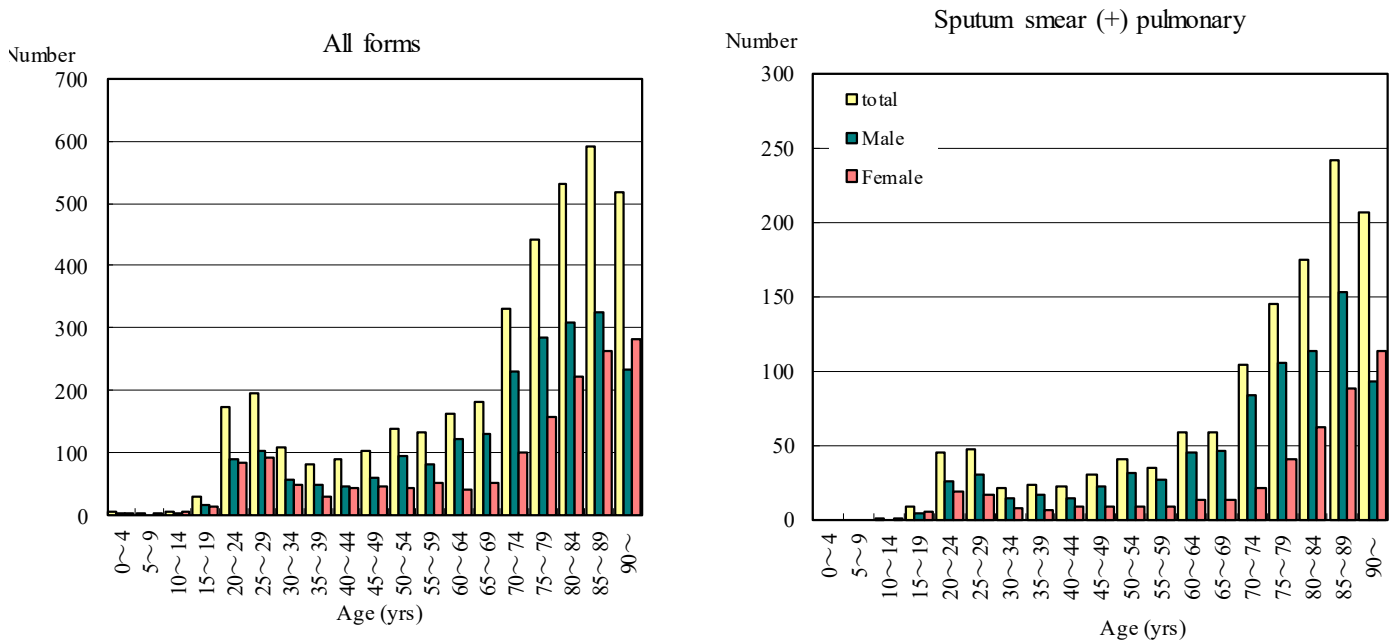


Figure 3. Notification rate of TB cases by sex and age, Japan, summation (Jan.-May.) 2023

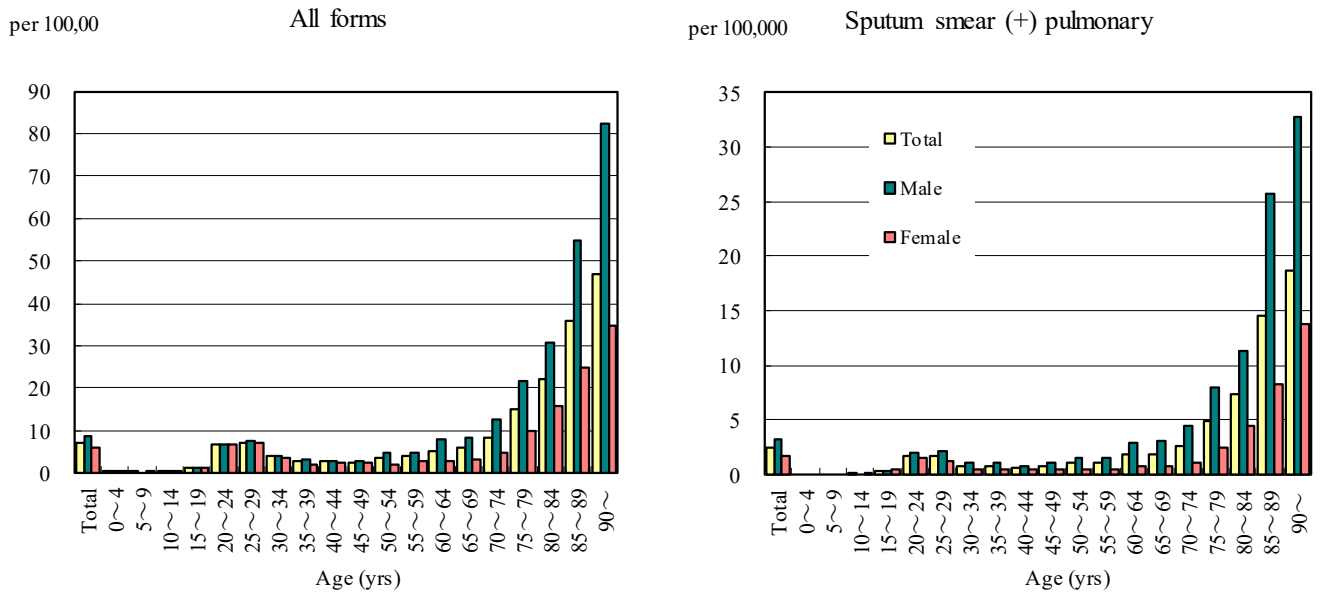


Figure 4. Notification rates of TB by prefecture, Japan, summation (Jan.-May.) 2023

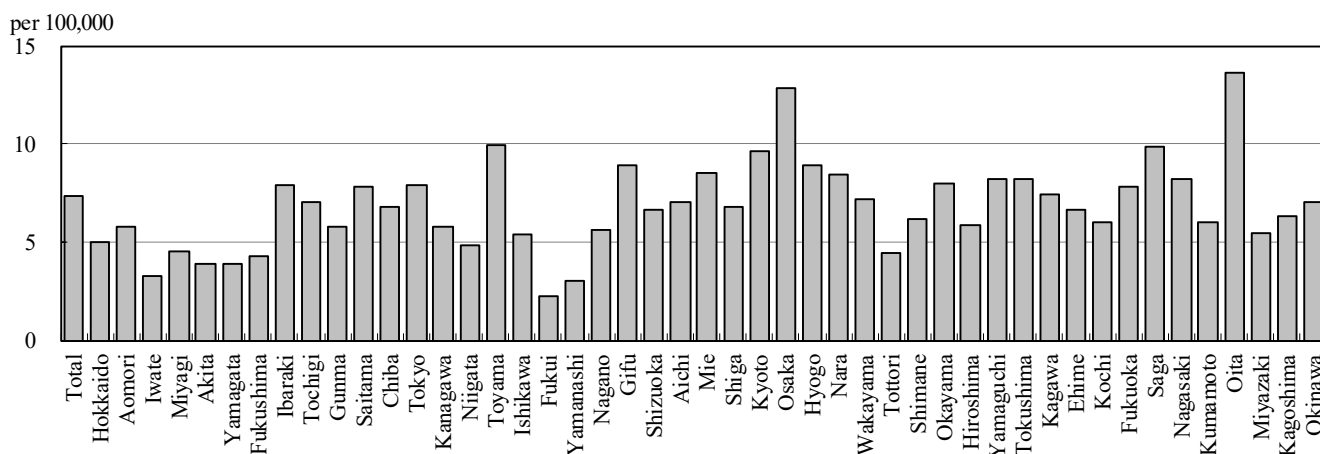


Figure 5. Notification rates of TB major city, Japan, summation (Jan.-May.) 2023

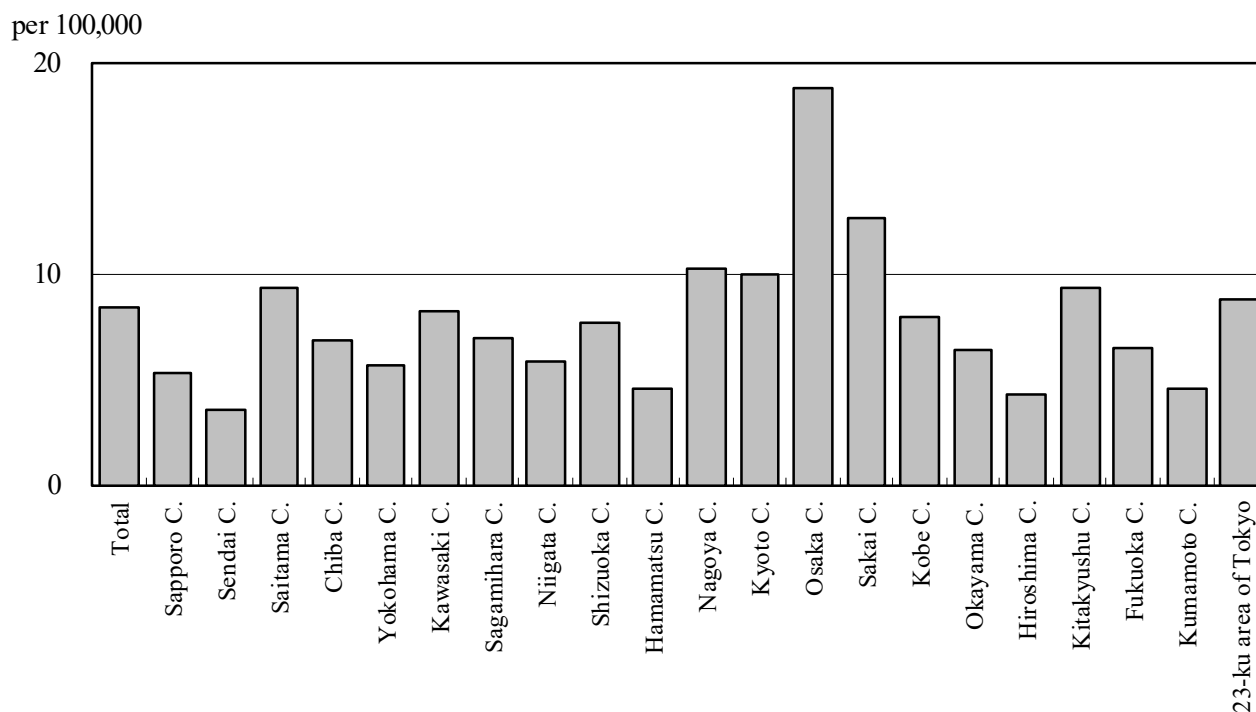


Figure 6. Number of LTBI, Japan, 2020-2023

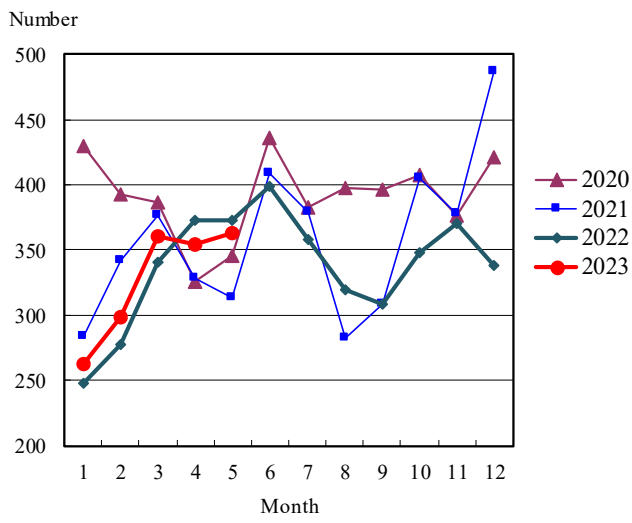


Figure 7. Number of LTBI by sex and age group, Japan, summation (Jan.-May.) 2023

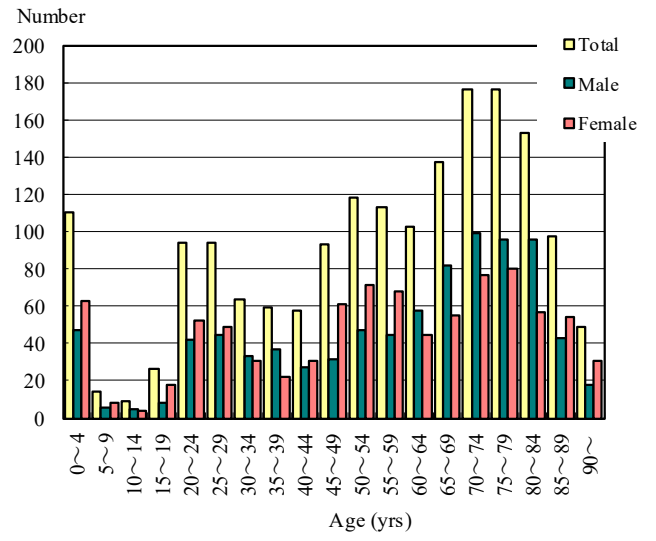


Table 1. Newly notified TB cases and rates by sex and age, Japan, 2023

	May.			Summation (Jan.-May.)			Notification rate (per 100,000)		
	Total	Male	Female	Total	Male	Female	Total	Male	Female
Total	809	484	325	3,830	2,243	1,587	7.4	8.9	5.9
0~4	1	1	0	7	3	4	0.4	0.3	0.5
5~9	0	0	0	1	0	1	0.0	0.0	0.1
10~14	0	0	0	7	1	6	0.3	0.1	0.6
15~19	9	3	6	31	17	14	1.3	1.4	1.3
20~24	38	19	19	175	90	85	6.7	6.7	6.7
25~29	41	23	18	195	103	92	7.3	7.5	7.1
30~34	23	11	12	108	58	50	4.0	4.2	3.8
35~39	22	14	8	81	50	31	2.7	3.3	2.1
40~44	14	8	6	91	48	43	2.7	2.9	2.6
45~49	26	13	13	105	59	46	2.7	3.0	2.4
50~54	35	29	6	138	95	43	3.5	4.8	2.2
55~59	24	15	9	133	82	51	4.0	4.9	3.0
60~64	39	29	10	164	122	42	5.3	7.9	2.7
65~69	36	28	8	183	131	52	5.8	8.6	3.2
70~74	73	52	21	332	232	100	8.5	12.6	4.9
75~79	84	53	31	442	284	158	15.1	21.6	9.8
80~84	113	66	47	530	308	222	22.1	30.9	15.9
85~89	123	71	52	590	326	264	35.8	54.7	25.1
90~	108	49	59	517	234	283	47.1	82.3	34.7

Temporary registrants = 43, Total of registrants and temporary registrants = 852

Rate: summation / (population*5/12)*100,000

Population: as of 1st Oct. 2022

Table 2. Newly notified sputum smear positive pulmonary TB cases and rates by sex and age, Japan, 2023

	May.			Summation (Jan.-May.)			Notification rate (per 100,000)		
	Total	Male	Female	Total	Male	Female	Total	Male	Female
Total	246	162	84	1,261	823	438	2.4	3.3	1.6
0~4	0	0	0	0	0	0	0.0	0.0	0.0
5~9	0	0	0	0	0	0	0.0	0.0	0.0
10~14	0	0	0	1	0	1	0.0	0.0	0.1
15~19	3	0	3	9	4	5	0.4	0.3	0.4
20~24	8	6	2	45	26	19	1.7	1.9	1.5
25~29	13	10	3	47	30	17	1.8	2.2	1.3
30~34	5	3	2	21	14	7	0.8	1.0	0.5
35~39	11	7	4	23	17	6	0.8	1.1	0.4
40~44	3	2	1	22	14	8	0.7	0.8	0.5
45~49	4	2	2	30	22	8	0.8	1.1	0.4
50~54	11	10	1	40	31	9	1.0	1.6	0.5
55~59	4	4	0	35	27	8	1.0	1.6	0.5
60~64	13	10	3	58	45	13	1.9	2.9	0.8
65~69	7	7	0	59	46	13	1.9	3.0	0.8
70~74	18	15	3	104	83	21	2.7	4.5	1.0
75~79	16	13	3	145	105	40	5.0	8.0	2.5
80~84	45	30	15	175	113	62	7.3	11.3	4.4
85~89	45	26	19	241	153	88	14.6	25.7	8.4
90~	40	17	23	206	93	113	18.7	32.7	13.9

Rate: summation / (population*5/12)*100,000

Population: as of 1st Oct. 2022

Table 3. Newly notified TB cases and rates by prefecture, Japan, 2023

	May.		Summation (Jan.-May.)		Notification rate (per 100,000)	
	Newly notified TB	Sputum smear (+)	Newly notified TB	Sputum smear (+)	Newly notified TB	Sputum smear (+)
	Total	809	246	3,830	1,261	7.4
Hokkaido	28	11	107	39	5.0	1.8
Aomori	7	1	29	7	5.8	1.4
Iwate	1	0	16	6	3.3	1.2
Miyagi	10	4	43	11	4.5	1.2
Akita	3	0	15	3	3.9	0.8
Yamagata	6	1	17	4	3.9	0.9
Fukushima	4	1	32	9	4.3	1.2
Ibaraki	19	2	93	17	7.9	1.4
Tochigi	14	4	56	19	7.0	2.4
Gunma	5	0	46	8	5.8	1.0
Saitama	46	15	238	86	7.8	2.8
Chiba	33	10	178	55	6.8	2.1
Tokyo	93	39	462	177	7.9	3.0
Kanagawa	50	20	222	85	5.8	2.2
Niigata	13	2	43	12	4.8	1.3
Toyama	13	3	42	13	9.9	3.1
Ishikawa	7	1	25	6	5.4	1.3
Fukui	0	0	7	2	2.2	0.6
Yamanashi	2	0	10	2	3.0	0.6
Nagano	5	0	47	19	5.6	2.3
Gifu	12	4	72	30	8.9	3.7
Shizuoka	15	5	99	34	6.6	2.3
Aichi	43	12	220	63	7.0	2.0
Mie	12	7	62	18	8.5	2.5
Shiga	5	2	40	12	6.8	2.0
Kyoto	19	3	102	23	9.6	2.2
Osaka	106	34	470	164	12.8	4.5
Hyogo	46	12	200	72	8.9	3.2
Nara	13	6	46	21	8.5	3.9
Wakayama	5	2	27	11	7.2	2.9
Tottori	3	1	10	2	4.4	0.9
Shimane	2	0	17	6	6.2	2.2
Okayama	13	6	62	24	8.0	3.1
Hiroshima	16	3	67	20	5.8	1.7
Yamaguchi	13	2	45	16	8.2	2.9
Tokushima	4	3	24	6	8.2	2.0
Kagawa	7	1	29	10	7.5	2.6
Ehime	3	1	36	11	6.6	2.0
Kochi	6	0	17	5	6.0	1.8
Fukuoka	40	12	166	54	7.8	2.5
Saga	5	1	33	9	9.9	2.7
Nagasaki	8	2	44	11	8.2	2.1
Kumamoto	12	4	43	16	6.0	2.2
Oita	18	5	63	22	13.7	4.8
Miyazaki	6	2	24	4	5.5	0.9
Kagoshima	8	1	41	9	6.3	1.4
Okinawa	10	1	43	8	7.0	1.3

Rate: summation / (population*5/12)*100,000

Population: as of 1st Oct. 2022

Table 4. Newly notified TB cases and rates by major city, Japan, 2023

	May.		Summation (Jan.-May.)		Notification Rate (per 100,000)	
	Newly notified TB	Sputum Smear(+)	Newly notified TB	Sputum Smear(+)	Newly notified TB	Sputum Smear(+)
Total	290	96	1,313	457	8.4	2.9
Sapporo City	17	8	43	18	5.2	2.2
Sendai City	4	1	16	3	3.5	0.7
Saitama City	9	2	52	19	9.3	3.4
Chiba City	4	2	28	13	6.9	3.2
Yokohama City	17	6	89	33	5.7	2.1
Kawasaki City	11	5	53	19	8.3	3.0
Sagamihara City	4	2	21	11	6.9	3.6
Niigata City	7	1	19	5	5.9	1.5
Shizuoka City	3	0	22	7	7.7	2.5
Hamamatsu City	3	2	15	6	4.5	1.8
Nagoya City	18	4	99	33	10.2	3.4
Kyoto City	8	1	60	14	9.9	2.3
Osaka City	52	15	215	67	18.7	5.8
Sakai City	14	5	43	17	12.6	5.0
Kobe City	12	4	50	21	7.9	3.3
Okayama City	5	1	19	7	6.3	2.3
Hiroshima City	5	0	21	8	4.2	1.6
Kitakyushu City	10	2	36	7	9.3	1.8
Fukuoka City	11	5	44	15	6.5	2.2
Kumamoto City	5	2	14	5	4.6	1.6
23-ku area of Tokyo	71	28	354	129	8.7	3.2

Rate: summation / (population*5/12)*100,000

Population: as of 1st Oct. 2022

Major city: city with a population of one million or more.

Table 4 is a re-count of Table 3.

Table 5. LTBI cases and rates by sex and age, Japan, 2023

	May.			Summation (Jan.-May.)			(Ratio) LTBI/Newly notified cases		
	Total	Male	Female	Total	Male	Female	Total	Male	Female
Total	363	170	193	1,743	866	877	0.5	0.4	0.6
0~4	22	12	10	110	47	63	15.7	15.7	15.8
5~9	5	2	3	14	6	8	14.0	-	8.0
10~14	3	2	1	9	5	4	1.3	5.0	0.7
15~19	6	1	5	26	8	18	0.8	0.5	1.3
20~24	28	14	14	94	42	52	0.5	0.5	0.6
25~29	18	6	12	94	45	49	0.5	0.4	0.5
30~34	13	8	5	64	33	31	0.6	0.6	0.6
35~39	7	2	5	59	37	22	0.7	0.7	0.7
40~44	19	7	12	58	27	31	0.6	0.6	0.7
45~49	22	6	16	93	32	61	0.9	0.5	1.3
50~54	23	9	14	118	47	71	0.9	0.5	1.7
55~59	27	9	18	113	45	68	0.8	0.5	1.3
60~64	17	9	8	103	58	45	0.6	0.5	1.1
65~69	23	14	9	137	82	55	0.7	0.6	1.1
70~74	31	16	15	176	99	77	0.5	0.4	0.8
75~79	43	25	18	176	96	80	0.4	0.3	0.5
80~84	28	18	10	153	96	57	0.3	0.3	0.3
85~89	22	7	15	97	43	54	0.2	0.1	0.2
90~	6	3	3	49	18	31	0.1	0.1	0.1

LTBI: latent TB Infection

Number of LTBI is not included in the newly notified TB patients

Table 6. LTBI cases and rates by prefecture, Japan, 2023

	May.	Summation (Jan.-May.)	
	LTBI	LTBI	(Ratio) LTBI / new TB
Total	363	1,743	0.46
Hokkaido	16	67	0.63
Aomori	1	15	0.52
Iwate	3	14	0.88
Miyagi	5	31	0.72
Akita	1	8	0.53
Yamagata	0	3	0.18
Fukushima	1	6	0.19
Ibaraki	17	51	0.55
Tochigi	4	13	0.23
Gunma	3	9	0.20
Saitama	22	124	0.52
Chiba	27	97	0.54
Tokyo	48	226	0.49
Kanagawa	17	112	0.50
Niigata	2	16	0.37
Toyama	9	18	0.43
Ishikawa	0	11	0.44
Fukui	1	4	0.57
Yamanashi	2	5	0.50
Nagano	6	20	0.43
Gifu	7	27	0.38
Shizuoka	4	24	0.24
Aichi	26	126	0.57
Mie	1	12	0.19
Shiga	7	12	0.30
Kyoto	9	47	0.46
Osaka	37	203	0.43
Hyogo	16	68	0.34
Nara	6	25	0.54
Wakayama	2	17	0.63
Tottori	1	3	0.30
Shimane	1	4	0.24
Okayama	6	27	0.44
Hiroshima	7	51	0.76
Yamaguchi	6	20	0.44
Tokushima	4	7	0.29
Kagawa	2	13	0.45
Ehime	0	7	0.19
Kochi	0	2	0.12
Fukuoka	12	66	0.40
Saga	2	5	0.15
Nagasaki	1	15	0.34
Kumamoto	5	15	0.35
Oita	5	24	0.38
Miyazaki	2	14	0.58
Kagoshima	2	20	0.49
Okinawa	7	39	0.91

LTBI: Latent TB Infection

Number of LTBI is not included in the newly notified TB patients.

Table 7. LTBI cases and rates by major city, Japan, 2023

	May.	Summation (Jan.-May.)	
	LTBI	LTBI	(Ratio) LTBI / new TB
Total	136	637	0.49
Sapporo City	12	32	0.74
Sendai City	0	12	0.75
Saitama City	8	35	0.67
Chiba City	3	11	0.39
Yokohama City	5	41	0.46
Kawasaki City	3	21	0.40
Sagamihara City	4	8	0.38
Niigata City	0	7	0.37
Shizuoka City	0	2	0.09
Hamamatsu City	2	10	0.67
Nagoya City	14	63	0.64
Kyoto City	6	27	0.45
Osaka City	11	82	0.38
Sakai City	9	23	0.53
Kobe City	7	23	0.46
Okayama City	4	18	0.95
Hiroshima City	5	18	0.86
Kitakyushu City	4	12	0.33
Fukuoka City	1	16	0.36
Kumamoto City	3	6	0.43
23-ku area of Tokyo	35	170	0.48

LTBI: Latent TB Infection

Number of LTBI is not included in the newly notified TB patients,

Major city: city with a population of one million or more

Table 7 is a re-count of Table 6