

【Case finding】

Table1 Proportion of mode of detection among newly notified tuberculosis patients, 2007–2021

Year	Newly notified TB patients	Individual medical checkup		Mass screening								Contact examination				Medical institutions						Others		Unknown	
				Schools		Residents		Employees		Facilities		Family		Others		Outpatients with TB symptoms(*1)		Inpatients with other diseases		Outpatients with other diseases					
				n	%	n	%	n	%	n	%	n	%	n	%	n	%	n	%	n	%				
2007	25,311	537	2.1	217	0.9	636	2.5	1,931	7.6	145	0.6	355	1.4	370	1.5	16,997	67.2	2,031	8.0	1,611	6.4	340	1.3	141	0.6
2008	24,760	639	2.6	195	0.8	486	2.0	1,877	7.6	144	0.6	325	1.3	410	1.7	15,347	62.0	2,681	10.8	2,100	8.5	316	1.3	240	1.0
2009	24,170	611	2.5	197	0.8	550	2.3	1,749	7.2	136	0.6	324	1.3	311	1.3	14,864	61.5	2,752	11.4	2,220	9.2	301	1.2	155	0.6
2010	23,261	507	2.2	244	1.0	544	2.3	1,618	7.0	128	0.6	313	1.3	350	1.5	13,901	59.8	2,792	12.0	2,305	9.9	333	1.4	226	1.0
2011	22,681	470	2.1	188	0.8	497	2.2	1,531	6.8	126	0.6	354	1.6	482	2.1	13,177	58.1	2,916	12.9	2,515	11.1	330	1.5	95	0.4
2012	21,283	409	1.9	163	0.8	498	2.3	1,424	6.7	121	0.6	315	1.5	374	1.8	12,284	57.7	2,941	13.8	2,312	10.9	357	1.7	85	0.4
2013	20,495	413	2.0	172	0.8	455	2.2	1,246	6.1	89	0.4	314	1.5	333	1.6	11,978	58.4	2,745	13.4	2,306	11.3	336	1.6	108	0.5
2014	19,615	344	1.8	201	1.0	404	2.1	1,221	6.2	92	0.5	303	1.5	333	1.7	11,441	58.3	2,591	13.2	2,210	11.3	328	1.7	147	0.7
2015	18,280	319	1.7	192	1.1	359	2.0	1,147	6.3	78	0.4	248	1.4	263	1.4	10,556	57.7	2,630	14.4	2,043	11.2	144	0.8	127	0.7
2016	17,625	319	1.8	250	1.4	355	2.0	1,056	6.0	98	0.6	211	1.2	409	2.3	10,073	57.2	2,471	14.0	1,971	11.2	146	0.8	98	0.6
2017	16,789	331	2.0	259	1.5	336	2.0	1,088	6.5	70	0.4	256	1.5	323	1.9	9,338	55.6	2,528	15.1	1,900	11.3	150	0.9	73	0.4
2018	15,590	290	1.9	226	1.4	288	1.8	1,077	6.9	74	0.5	239	1.5	314	2.0	8,617	55.3	2,317	14.9	1,798	11.5	139	0.9	56	0.4
2019	14,460	278	1.9	226	1.6	314	2.2	983	6.8	76	0.5	210	1.5	358	2.5	7,746	53.6	2,288	15.8	1,690	11.7	104	0.7	62	0.4
2020	12,739	207	1.6	80	0.6	203	1.6	787	6.2	34	0.3	190	1.5	199	1.6	7,096	55.7	2,102	16.5	1,583	12.4	124	1.0	50	0.4
2021	11,519	195	1.7	124	1.1	205	1.8	725	6.3	42	0.4	142	1.2	140	1.2	6,320	54.9	1,986	17.2	1,398	12.1	99	0.9	60	0.5
2021年																									
Age group																									
0~9	19	-	-	-	-	-	-	-	-	-	-	7	36.8	-	-	5	26.3	2	10.5	-	-	5	26.3	-	-
10~19	108	-	-	29	26.9	-	-	5	4.6	-	-	11	10.2	1	0.9	49	45.4	2	1.9	-	-	3	2.8	1	0.9
20~29	930	19	2.0	86	9.2	-	-	203	21.8	2	0.2	17	1.8	29	3.1	503	54.1	19	2.0	27	2.9	5	0.5	7	0.8
30~39	597	15	2.5	6	1.0	3	0.5	144	24.1	3	0.5	14	2.3	10	1.7	337	56.4	20	3.4	34	5.7	3	0.5	4	0.7
40~49	640	34	5.3	2	0.3	7	1.1	129	20.2	3	0.5	15	2.3	13	2.0	346	54.1	25	3.9	50	7.8	3	0.5	5	0.8
50~59	841	16	1.9	1	0.1	19	2.3	133	15.8	2	0.2	22	2.6	21	2.5	461	54.8	62	7.4	86	10.2	5	0.6	5	0.6
60~69	1,070	32	3.0	-	-	37	3.5	82	7.7	2	0.2	15	1.4	20	1.9	560	52.3	125	11.7	163	15.2	19	1.8	5	0.5
70~79	2,241	45	2.0	-	-	66	2.9	27	1.2	7	0.3	18	0.8	17	0.8	1,163	51.9	430	19.2	422	18.8	20	0.9	11	0.5
80~89	3,440	28	0.8	-	-	61	1.8	2	0.1	15	0.4	20	0.6	14	0.4	1,908	55.5	845	24.6	495	14.4	26	0.8	13	0.4
90~	1,633	6	0.4	-	-	12	0.7	-	-	8	0.5	3	0.2	15	0.9	988	60.5	456	27.9	121	7.4	10	0.6	9	0.6

TB: tuberculosis

TB symptoms: Respiratory symptoms such as cough, sputum expectoration, bloody sputum, and hemoptysis; and other symptoms such as wheezing, chest pain, back pain, dyspnea, fever, night sweating, fatigue tendency, and weight loss.

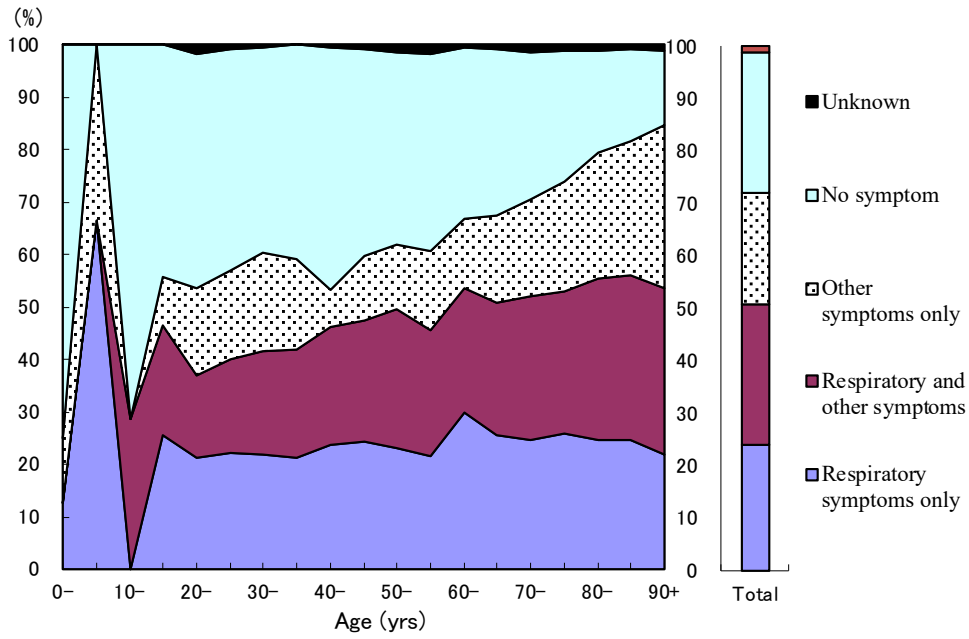


Fig.1 Proportion of symptoms among newly notified pulmonary tuberculosis patients by 5- years age group, in 2021

Respiratory symptoms include cough, sputum expectoration, bloody sputum, and hemoptysis. Other symptoms include wheezing, chest pain, back pain, dyspnea, fever, night sweating, fatigue tendency, and weight loss.

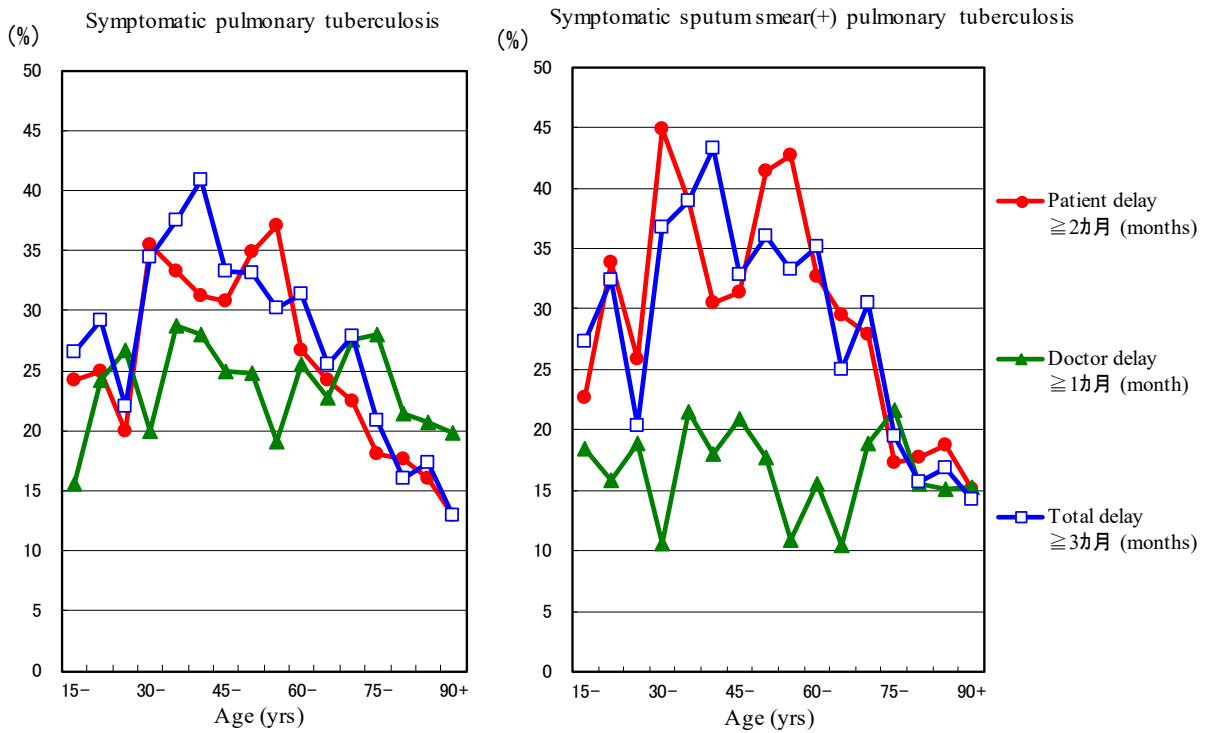


Fig.2 Proportion of patient delay, doctor delay and total delay among symptomatic pulmonary tuberculosis patients by 5-year age group, in 2021

Patient delay: time interval from the onset of symptoms to the first visit to a medical institution of 2 months or longer

Doctor delay: time interval from the first visit to a medical institution to the diagnosis of tuberculosis of 1 month or longer

Total delay: time interval from the onset of symptoms to the diagnosis of tuberculosis is 3 months or longer

Previous table Proportion of mode of detection among newly notified TB patients by age group, 2021

Age groups	Newly notified TB patients	Individual medical checkup	Mass screening				Contact examination		Medical institutions				Others	Unknown
			Schools	Residents	Employees	Facilities	Family	Others	Outpatients with TB symptoms (*1)	Inpatients with other diseases	Outpatients with other diseases			
	<i>n</i>	%	%	%	%	%	%	%	%	%	%	%	%	
All forms of TB														
Total	11,519	1.7	1.1	1.8	6.3	0.4	1.2	1.2	54.9	17.2	12.1	0.9	0.5	
0-14	29	0.0	3.4	0.0	0.0	0.0	37.9	0.0	34.5	6.9	0.0	17.2	0.0	
15-19	98	0.0	28.6	0.0	5.1	0.0	7.1	1.0	44.9	2.0	0.0	3.1	1.0	
20-24	447	2.2	13.9	0.0	20.8	0.4	1.8	2.7	50.3	2.2	2.5	0.7	0.7	
25-29	483	1.9	5.0	0.0	22.8	0.0	1.9	3.5	57.6	1.9	3.3	0.4	0.8	
30-34	315	2.2	1.9	1.0	26.0	0.6	1.6	1.3	56.2	2.9	4.1	1.0	0.3	
35-39	282	2.8	0.0	0.0	22.0	0.4	3.2	2.1	56.7	3.9	7.4	0.0	1.1	
40-44	274	5.1	0.4	2.2	21.9	0.0	1.5	2.6	54.4	3.6	6.2	0.4	0.4	
45-49	366	5.5	0.3	0.3	18.9	0.8	3.0	1.6	53.8	4.1	9.0	0.5	1.1	
50-54	447	1.3	0.0	1.6	16.3	0.4	2.0	2.5	58.2	5.8	9.8	0.4	0.9	
55-59	394	2.5	0.3	3.0	15.2	0.0	3.3	2.5	51.0	9.1	10.7	0.8	0.3	
60-64	452	4.0	0.0	2.7	10.6	0.0	1.5	1.8	51.8	10.2	13.5	2.0	0.7	
65-69	618	2.3	0.0	4.0	5.5	0.3	1.3	1.9	52.8	12.8	16.5	1.6	0.3	
70-74	1,011	2.6	0.0	3.2	2.2	0.2	1.1	0.9	50.6	17.7	19.6	0.8	0.4	
75-79	1,230	1.5	0.0	2.8	0.4	0.4	0.6	0.7	52.9	20.4	18.2	1.0	0.6	
80-84	1,591	0.7	0.0	1.6	0.1	0.2	0.4	0.4	56.3	22.8	16.3	0.5	0.3	
85-89	1,849	0.9	0.0	1.9	0.0	0.6	0.7	0.4	54.8	26.1	12.8	1.0	0.4	
90+	1,633	0.4	0.0	0.7	0.0	0.5	0.2	0.9	60.5	27.9	7.4	0.6	0.6	
(Re-count) Sputum smear positive pulmonary TB (2023/8/29 rev.)														
Total	4,127	1.1	0.6	1.2	4.0	0.3	0.5	0.6	60.7	18.3	11.1	0.8	0.4	
0-14	2	0.0	0.0	0.0	0.0	0.0	0.0	0.0	100.0	0.0	0.0	0.0	0.0	
15-19	35	0.0	11.4	0.0	11.4	0.0	8.6	0.0	57.1	0.0	0.0	2.9	0.0	
20-24	108	0.9	12.0	0.0	14.8	0.9	0.9	0.9	65.7	1.9	0.0	0.0	0.9	
25-29	94	1.1	5.3	0.0	14.9	0.0	0.0	2.1	72.3	2.1	0.0	1.1	1.1	
30-34	83	0.0	1.2	1.2	19.3	1.2	0.0	1.2	66.3	3.6	3.6	1.2	0.0	
35-39	86	2.3	0.0	0.0	17.4	0.0	3.5	1.2	67.4	1.2	5.8	0.0	1.2	
40-44	72	2.8	0.0	5.6	19.4	0.0	1.4	0.0	63.9	2.8	2.8	1.4	0.0	
45-49	110	2.7	0.0	0.0	17.3	1.8	1.8	0.9	65.5	1.8	6.4	0.9	0.0	
50-54	159	0.6	0.0	0.6	13.2	0.0	0.6	0.0	70.4	3.8	10.1	0.0	0.6	
55-59	132	1.5	0.0	0.8	12.1	0.0	1.5	2.3	63.6	7.6	9.1	0.8	0.0	
60-64	169	3.6	0.0	2.4	7.7	0.0	0.0	1.2	62.7	5.9	13.0	2.4	1.2	
65-69	210	2.9	0.0	1.0	3.8	0.0	0.5	0.0	63.3	11.9	13.8	1.9	0.0	
70-74	354	2.0	0.0	1.1	2.8	0.0	0.3	0.8	55.6	17.5	17.8	1.1	0.6	
75-79	440	1.1	0.0	2.0	0.0	0.2	0.2	0.5	55.5	23.6	15.5	0.5	0.2	
80-84	603	0.3	0.0	1.2	0.0	0.2	0.0	0.5	56.2	25.2	15.4	0.5	0.3	
85-89	771	0.5	0.0	1.9	0.0	0.5	0.6	0.4	58.4	24.3	11.8	0.9	0.4	
90+	699	0.3	0.0	0.4	0.0	0.4	0.0	0.1	64.1	26.9	6.7	0.3	0.4	

TB: tuberculosis

TB symptoms: Respiratory symptoms such as cough, sputum expectoration, bloody sputum, and hemoptysis; and other symptoms such as wheezing, chest pain, back pain, dyspnea, fever, night sweating, fatigue tendency, and weight loss.

Previous table Number of newly notified TB patients by occupation, sex and age group, 2021

Sex/Age group	Total	Service workers	Nurses/Public health nurses	Medical doctors	Other medical workers	Teachers/Nursery nurses	Pupils/Students	Other regular workers	Other temporary/daily workers	Other self-employed	Housekeepers	Infants/Little children	Jobless/ Others	Unknown
Male	6,726	122	15	18	49	18	156	1,183	207	344	7	5	4,387	215
0-14	12	0	0	0	0	0	7	0	0	0	0	5	0	0
15-19	48	1	0	0	0	0	37	7	0	0	0	0	3	0
20-24	235	3	2	0	5	1	72	95	14	3	0	0	32	8
25-29	260	9	1	1	5	2	29	152	20	4	0	0	30	7
30-39	291	26	5	0	10	1	8	169	10	15	1	0	38	8
40-49	354	25	4	4	11	2	1	191	18	24	0	0	54	20
50-59	545	17	2	5	4	7	1	260	27	48	0	0	149	25
60-69	760	17	1	3	11	4	0	195	43	81	1	0	366	38
70-79	1,513	19	0	2	3	1	1	97	59	97	1	0	1,176	57
80+	2,708	5	0	3	0	0	0	17	16	72	4	0	2,539	52
Female	4,793	96	101	9	163	26	154	456	126	86	86	8	3,347	135
0-14	17	0	0	0	0	0	8	0	0	0	0	8	1	0
15-19	50	0	0	0	2	0	39	3	1	0	0	0	5	0
20-24	212	5	7	0	16	2	67	61	16	1	1	0	28	8
25-29	223	13	5	0	21	0	29	90	13	1	6	0	37	8
30-39	306	19	11	5	28	8	10	107	23	6	11	0	65	13
40-49	286	22	29	1	33	6	1	76	28	16	12	0	50	12
50-59	296	13	34	0	31	6	0	72	20	18	17	0	71	14
60-69	310	11	12	1	22	3	0	37	17	9	13	0	167	18
70-79	728	10	3	1	8	1	0	8	7	15	12	0	638	25
80+	2,365	3	0	1	2	0	0	2	1	20	14	0	2,285	37

Previous table Proportion of mode of detection among newly notified pulmonary TB patients aged 20-59 years by occupation, 2021

	Pulmonary TB patients	Individual medical checkup	Mass screening			Contact examination		Clinics/Hospitals			Others/Unknown
			Residents	Employees	Schools/Facilities	Family	Others	Outpatients with TB symptoms	Inpatients with other diseases	Outpatients with other diseases	
Total	2,304	3.0	1.3	25.5	4.3	2.8	3.0	48.6	3.6	5.8	2.0
Service workers	123	4.9	3.3	22.8	0.8	3.3	2.4	53.7	5.7	3.3	0.0
Medical workers(*1)	211	2.8	0.0	30.3	0.9	1.4	10.9	43.6	2.4	5.7	1.9
Teachers/ Nursery nurses	30	3.3	3.3	20.0	0.0	13.3	0.0	50.0	6.7	0.0	3.3
Students	180	1.1	0.0	3.3	46.1	1.1	4.4	38.3	0.6	1.7	3.3
Other regular workers	987	2.4	0.6	39.9	0.0	2.5	2.4	43.4	2.6	4.9	1.2
Other temporary/ daily workers	136	2.9	2.9	18.4	0.7	5.1	1.5	58.1	0.7	4.4	5.1
Other self-employed	110	5.5	6.4	9.1	0.9	2.7	1.8	59.1	1.8	11.8	0.9
Housekeepers	31	9.7	3.2	3.2	0.0	0.0	0.0	71.0	3.2	9.7	0.0
Jobless/ Others	407	3.2	1.0	9.8	2.5	3.2	1.7	58.2	7.9	10.1	2.5
Unknown	89	5.6	2.2	15.7	1.1	4.5	0.0	52.8	7.9	4.5	5.6

*1 Medical workers include nurses, public health nurses, medical doctors and dentists, physical therapists, occupational therapists, medical technologists, radiographers, and co-medicals.

*2 TB symptoms: Respiratory symptoms such as cough, sputum expectoration, bloody sputum, and hemoptysis; and other symptoms such as wheezing, chest pain, back pain, dyspnea, fever, night sweating, fatigue tendency, and weight loss.

【Tuberculosis Characteristics upon Diagnosis】

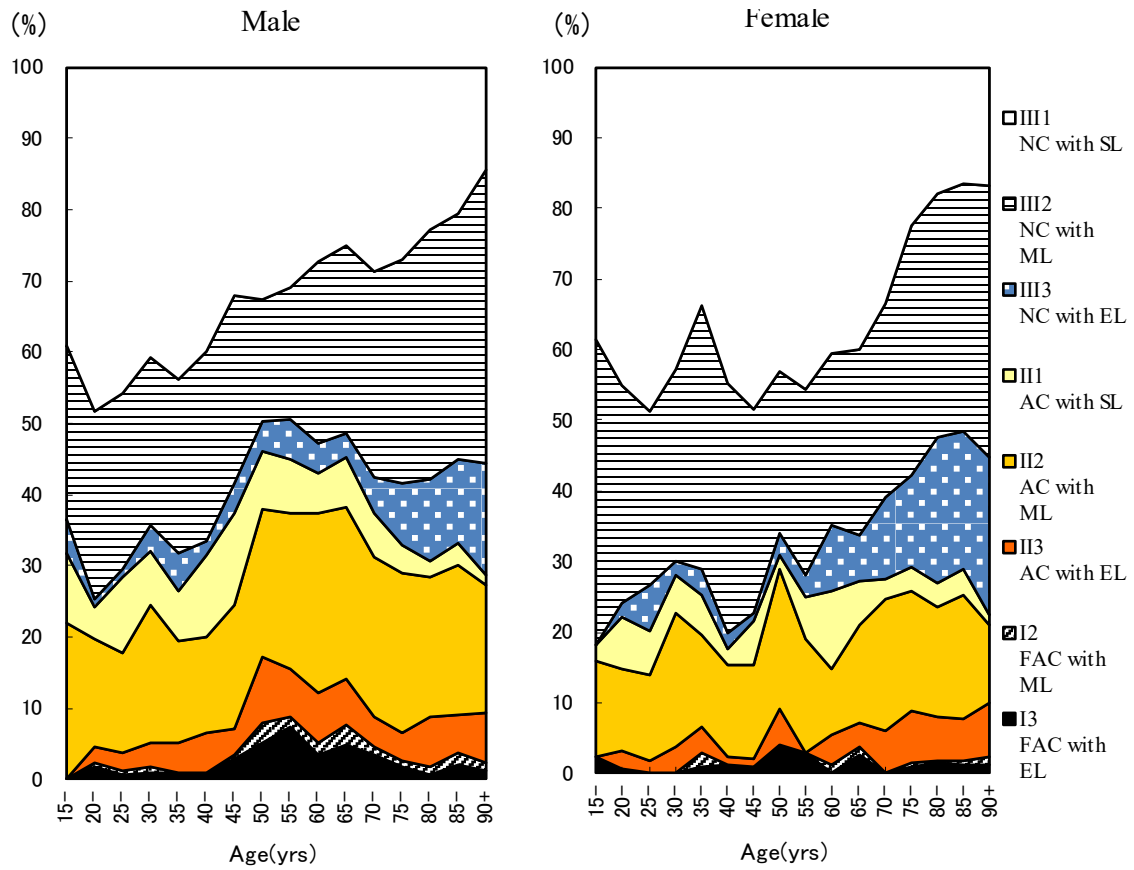


Fig.3 Proportion of cases classified by X-ray classification by sex and 5-yearage group, 2021
 NC : Non-cavitory SL : Slight lesion AC : Advanced cavitory ML : Moderate lesion
 FAC: Far-advance cavitory EL : Extensive lesion

Table 2 Number of newly notified tuberculosis patients with HIV infection, by sex and age group, 2021 and 2007–2021

Age group	Sputum smear positive		Other bacteriologically-positive		Bacteriologically-negative		Extra-pulmonary		Total	
	M	F	M	F	M	F	M	F	M	F
2021 Calendar year										
Total	3 (1)	3 (1)	4 (2)	2 (2)	3 (1)	0	13 (6)	2 (2)	23 (10)	7 (5)
0-19	0	0	0	0	0	0	1	0	1	0
20-24	0	0	0	0	0	0	0	0	0	0
25-29	0	1 (1)	3 (1)	1 (1)	0	0	2 (2)	0	5 (3)	2 (2)
30-34	1 (1)	1	0	1 (1)	0	0	0	1 (1)	1 (1)	3 (2)
35-39	0	0	0	0	0	0	2 (2)	0	2 (2)	0
40-44	0	0	0	0	2 (1)	0	0	0	2 (1)	0
45-49	0	0	1 (1)	0	0	0	1 (1)	0	2 (2)	0
50-54	2	0	0	0	0	0	2	1 (1)	4	1 (1)
55-59	0	0	0	0	0	0	0	0	0	0
60-64	0	0	0	0	0	0	1	0	1	0
65-69	0	0	0	0	0	0	1 (1)	0	1 (1)	0
70-74	0	0	0	0	0	0	2	0	2	0
75-79	0	0	0	0	0	0	0	0	0	0
80+	0	1	0	0	1	0	1	0	2	1
2007-2021 Calendar year										
Total	194 (27)	50 (24)	113 (30)	19 ##	54 (12)	11 (8)	238 (55)	34 (20)	599 (124)	114 (65)
0-19	1 (1)	0	0	0	1 (1)	0	3	0	5 (2)	0
20-24	10 (8)	0	4 (3)	1 (1)	1 (1)	1 (1)	3 (2)	1	18 (14)	3 (2)
25-29	10 (5)	8 (7)	7 (3)	2 (2)	1 (1)	2 (2)	19 (8)	1 (1)	37 (17)	13 (12)
30-34	15 (5)	6 (5)	13 (2)	5 (4)	4 (2)	1 (1)	29 (10)	6 (4)	61 (19)	18 (14)
35-39	25 (2)	4 (3)	21 (6)	3 (3)	9 (2)	3 (3)	40 (12)	6 (5)	95 (22)	16 (14)
40-44	32 (2)	7 (5)	16 (5)	0	11 (3)	3 (1)	45 (15)	8 (6)	104 (25)	18 (12)
45-49	19 (2)	3 (3)	15 (7)	1 (1)	6 (1)	0	36 (6)	2	76 (16)	6 (4)
50-54	18 (1)	1	12 (2)	2 (1)	6 (1)	0	18 (1)	1 (1)	54 (5)	4 (2)
55-59	11	0	7 (2)	0	4	0	11	3 (3)	33 (2)	3 (3)
60-64	19	1	6	1 (1)	3	0	10	0	38	2 (1)
65-69	10	1 (1)	6	0	5	0	11 (1)	1	32 (1)	2 (1)
70-74	6 (1)	3	3	2	1	0	7	2	17 (1)	7
75-79	7	1	0	0	1	0	3	2	11	3
80+	11	15	3	2	1	1	3	1	18	19

() : Re-count of foreigners

HIV : Human Immunodeficiency Virus. M : male patients, F : female patients.

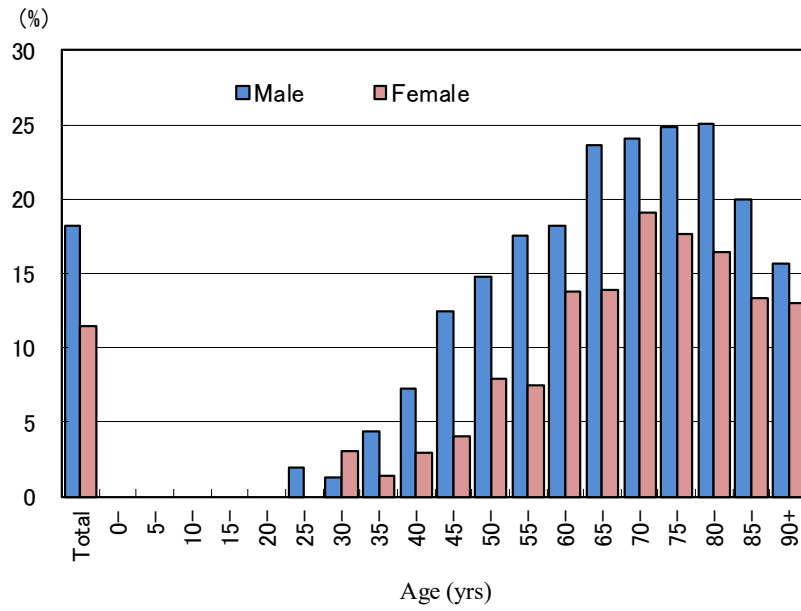


Fig.4 Proportion of newly notified tuberculosis patients with diabetes mellitus in each age-group by sex, 2021

Table 3 Drug susceptibility test results among newly notified pulmonary tuberculosis patients, by treatment history, 2012–2021

Treatment history, Culture examination results, Drug susceptibility test results	2012				2013				2014				2015				2016				2017				2018				2019				2020				2021			
	n	%	%	%	n	%	%	%	n	%	%	%	n	%	%	%	n	%	%	%	n	%	%	%	n	%	%	%	n	%	%	%	n	%	%	%	n	%	%	%
Total																																								
Pulmonary tuberculosis	16,432	100%			15,972	100%			15,149	100%			14,123	100%			13,608	100%			13,011	100%			12,033	100%			11,094	100%			9,446	100%			8,413	100%		
Culture result obtained	14,058	85.6			13,311	83.3			12,909	85.2			12,260	86.8			12,255	90.1			11,764	90.4			11,070	92.0			9,968	89.9			8,170	86.5			7,219	85.8		
Culture positive	11,261	68.5	100%		10,523	65.9	100%		10,259	67.7	100%		10,035	71.1	100%		9,878	72.6	100%		9,580	73.6	100%		9,016	74.9	100%		8,110	73.1	100%		6,645	70.3	100%		5,902	70.2	100%	
DST result obtained	8,347		74.1	100%	7,701		73.2	100%	7,645		74.5	100%	7,630		76.0	100%	7,732		78.3	100%	7,891		82.4	100%	7,570		84.0	100%	6,658		82.1	100%	5,209		78.4	100%	4,551		77.1	100%
MDR	60		0.7	47	0.6		56	0.7	48	0.6		49	0.6	52	0.7	55	0.7	44	0.7	46	0.7	55	0.7	44	0.7	44	0.7	46	0.7	44	0.9	41	0.9	41						
Any INH resistance	380		4.6	369	4.8		349	4.6	372	4.9		369	4.8	383	4.9	377	5.0	359	5.4	297	5.7		297	5.4	297	5.4	297	5.7	221	5.7	221	4.9	49							
Any RFP resistance	73		0.9	64	0.8		76	1.0	77	1.0		74	1.0	80	1.0	87	1.1	65	1.2	60	1.2		60	1.1	65	1.2	56	1.2	56	1.2	56	1.2	56							
Any resistance*	810		9.7	757	9.8		749	9.8	767	10.1		741	9.6	853	10.8	781	10.3	719	10.8	579	11.1		475	11.1	475	11.1	475	11.1	475	11.1	475	10.4	10.4							
New treatment																																								
Pulmonary tuberculosis	15,040	100%			14,727	100%			13,956	100%			13,102	100%			12,686	100%			12,174	100%			11,298	100%			10,405	100%			8,891	100%			7,974	100%		
Culture result obtained	12,882	85.7			12,279	83.4			11,897	85.2			11,394	87.0			11,435	90.1			11,018	90.5			10,405	92.1			9,358	89.9			7,681	86.4			6,849	85.9		
Culture positive	10,379	69.0	100%		9,782	66.4	100%		9,523	68.2	100%		9,379	71.6	100%		9,284	73.2	100%		9,030	74.2	100%		8,536	75.6	100%		7,652	73.5	100%		6,289	70.7	100%		5,622	70.5	100%	
DST result obtained	7,676		74.0	100%	7,166		73.3	100%	7,104		74.6	100%	7,135		76.1	100%	7,278		78.4	100%	7,434		82.3	100%	7,171		84.0	100%	6,288		82.2	100%	4,938		78.5	100%	4,335		77.1	100%
MDR	38		0.5	31	0.4		40	0.6	33	0.5		37	0.5	41	0.6	41	0.6	35	0.6	31	0.6		31	0.6	35	0.6	31	0.6	31	0.6	36	0.8	0.8							
Any INH resistance	310		4.0	326	4.5		288	4.1	317	4.4		316	4.3	338	4.5	331	4.6	319	5.1	260	5.3		205	5.1	260	5.1	260	5.3	205	4.7	4.7									
Any RFP resistance	46		0.6	42	0.6		58	0.8	58	0.8		58	0.8	62	0.8	68	0.9	52	0.8	44	0.9		48	0.8	44	0.9	48	0.9	48	1.1	1.1									
Any resistance*	712		9.3	680	9.5		664	9.3	686	9.6		659	9.1	773	10.4	717	10.0	656	10.4	532	10.8		444	10.8	444	10.8	444	10.8	444	10.2	10.2									
Retreatment																																								
Pulmonary tuberculosis	1,094	100%			1,013	100%			968	100%			851	100%			735	100%			660	100%			575	100%			542	100%			424	100%			342	100%		
Culture result obtained	959	87.7			852	84.1			848	87.6			732	86.0			665	90.5			605	91.7			532	92.5			477	88.0			374	88.2			292	85.4		
Culture positive	693	63.3	100%		586	57.8	100%		591	61.1	100%		534	62.7	100%		462	62.9	100%		423	64.1	100%		365	63.5	100%		341	62.9	100%		257	60.6	100%		209	61.1	100%	
DST result obtained	555		80.1	100%	435		74.2	100%	449		76.0	100%	412		77.2	100%	358		77.5	100%	362		85.6	100%	323		88.5	100%	286		83.9	100%	201		78.2	100%	166		79.4	100%
MDR	22		4.0	16	3.7		15	3.3	14	3.4		12	3.4	9	2.5	11	3.4	9	3.1	13	6.5		4	3.1	13	3.1	13	6.5	4	2.4	2.4									
Any INH resistance	67		12.1	35	8.0		57	12.7	49	11.9		51	14.2	36	9.9	41	12.7	36	12.6	31	15.4		11	12.6	31	12.6	31	15.4	11	6.6	6.6									
Any RFP resistance	26		4.7	22	5.1		17	3.8	18	4.4		16	4.5	15	4.1	16	5.0	13	4.5	14	7.0		7	4.5	14	4.5	14	7.0	7	4.2	4.2									
Any resistance*	94		16.9	65	14.9		79	17.6	72	17.5		70	19.6	65	18.0	58	18.0	56	19.6	40	19.9		21	19.6	40	19.9	21	12.7	12.7											
No information about treatment history																																								
Pulmonary tuberculosis	298	100%			232	100%			225	100%			170	100%			187	100%			177	100%			160	100%			147	100%			131	100%			97	100%		
Culture result obtained	217	72.8			180	77.6			164	72.9			134	78.8			155	82.9			141	79.7			133	83.1			133	90.5			115	87.8			78	80.4		
Culture positive	189	63.4	100%		155	66.8	100%		145	64.4	100%		122	71.8	100%		132	70.6	100%		127	71.8	100%		115	71.9	100%		117	79.6	100%		99	75.6	100%		71	73.2	100%	
DST result obtained	116		61.4	100%	100		64.5	100%	92		63.4	100%	83		68.0	100%	96		72.7	100%	95		74.8	100%	76		66.1	100%	84		71.8	100%	70		70.7	100%	50		70.4	100%
MDR	0		0.0	0	0.0		1	1.1	1	1.2		0	0.0	2	2.1	3	3.9	0	0.0	2	2.9		1	3.9	0	0.0	2	2.9	1	2.0	2.0									
Any INH resistance	3		2.6	8	8.0		4	4.3	6	7.2		2	2.1	9	9.5	5	6.6	4	4.8	6	8.6		5	6.6	4	4.8	6	8.6	5	10.0	10.0									
Any RFP resistance	1		0.9	0	0.0		1	1.1	1	1.2		2	2.1	3	3.2	3	3.9	0	0.0	2	2.9		1	3.9	0	0.0	2	2.9	1	2.0	2.0									
Any resistance*	4		3.4	12	12.0		6	6.5	9	10.8		12	12.5	15	15.8	6	7.9	7	8.3	7	10.0		10	8.3	7	10.0	10	20.0	20.0											

DST: Drug susceptibility test MDR: Multi-drug resistant, i.e., resistant to at least INH and RFP INH: isoniazid RFP: rifampicin

Cases having drug resistance are counted independently by drug.

*: resistant to either INH, RFP, SM, or EB

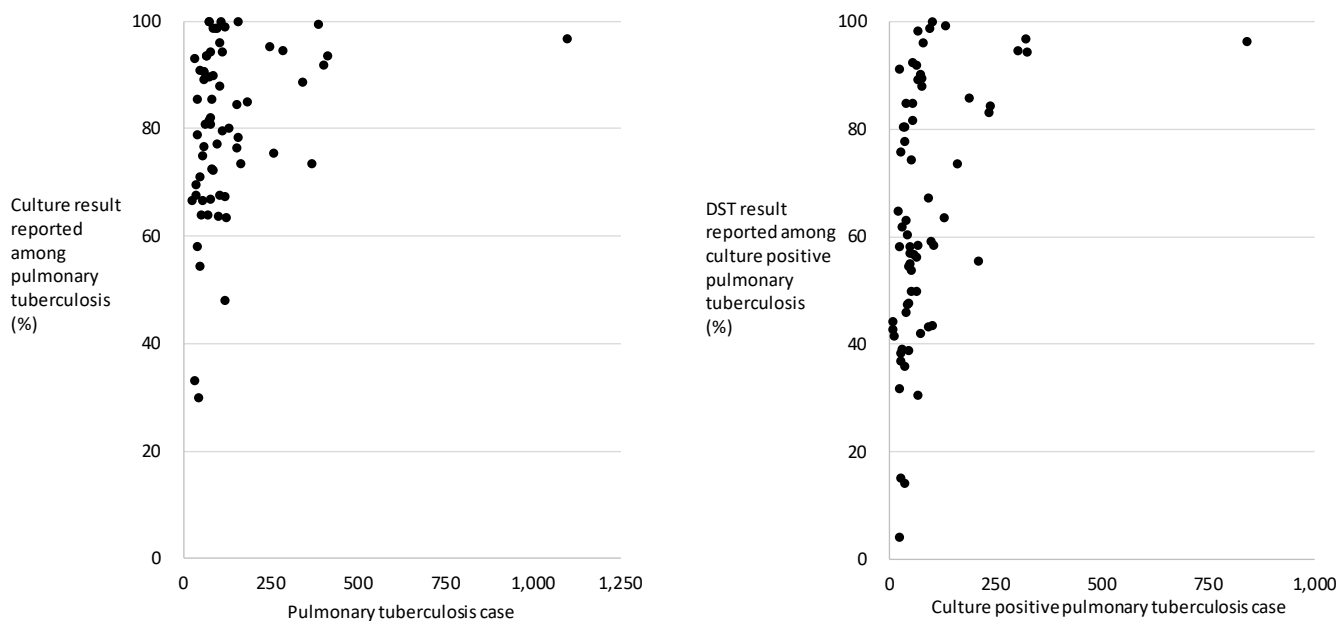
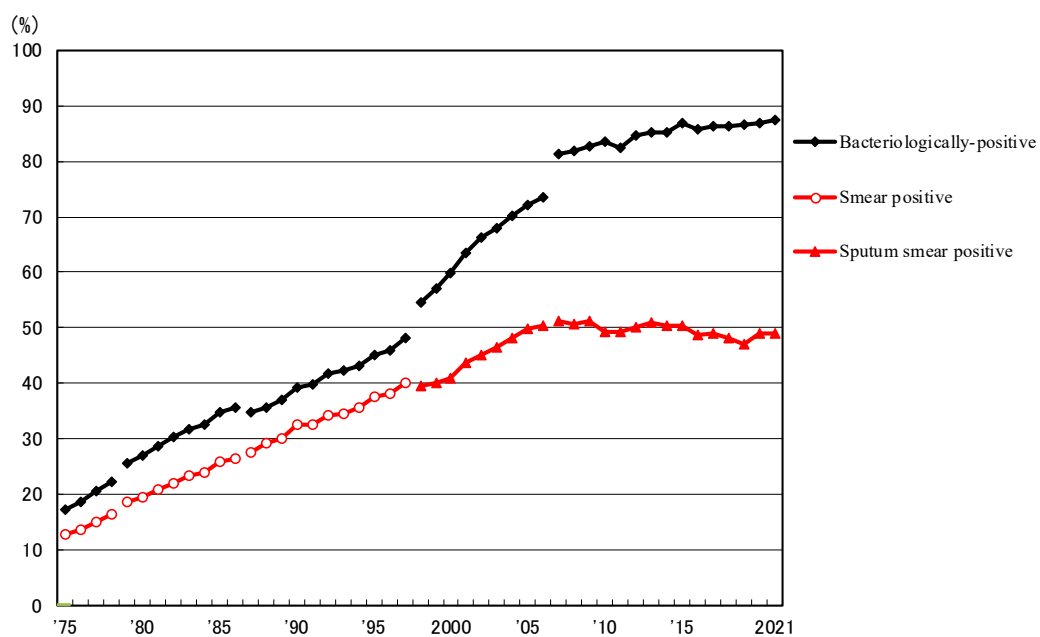


Fig. 5 Scatter plot of culture results reported among pulmonary tuberculosis patients and anti-tuberculosis drug susceptibility test results among newly notified pulmonary tuberculosis patients, by prefecture and major city, 2021



Previous Fig Proportion of bacteriologically confirmed cases among newly notified pulmonary tuberculosis patients, 1975-2021

Sources of information and subjects:

Annual tuberculosis reports from public health centers

1975-1978: All forms of tuberculosis

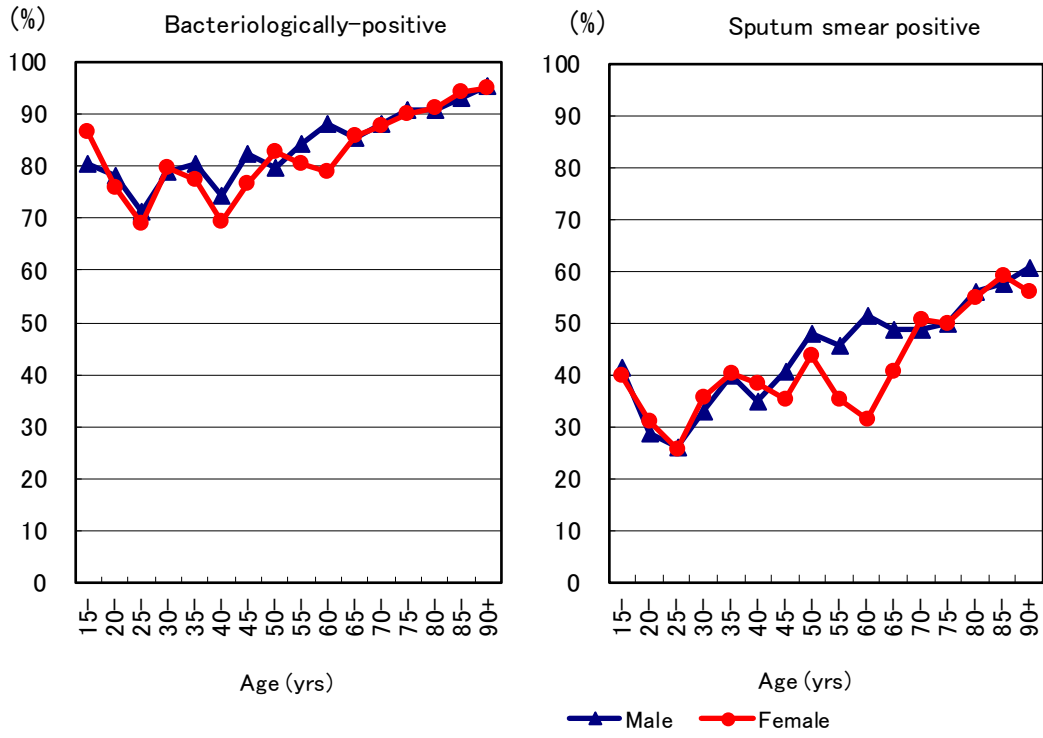
1979-1986: Pulmonary tuberculosis

Nationwide computerized tuberculosis surveillance system

1987-1997: Pulmonary Tuberculosis

1998-2006: Pulmonary tuberculosis (New patient criteria for notification were applied)

2007-2009: Pulmonary tuberculosis (Item of nucleic acid amplification was added)



Previous Fig. Proportion of bacteriologically confirmed cases among newly notified pulmonary tuberculosis patients by sex and 5-year age group, 2021



Previous Fig. Proportion of far-advanced cavitary cases among newly notified pulmonary Tuberculosis patients, 1975-2021

Previous table Proportion of cavitory or/and sputum smear positive cases among newly notified pulmonary TB patients aged 30-59 years, 2021

	Male								Female							
	Pulmonary TB	Cavitory or sputum smear(+)			Cavitory and sputum smear(+)			Pulmonary TB	Cavitory or sputum smear(+)			Cavitory and sputum smear(+)				
		n	%	Ratio	n	%	Ratio		n	%	Ratio	n	%	Ratio		
Service workers	57	39	68.4	2.2	19	33.3	2.9	42	18	42.9	1.3	9	21.4	3.3		
Medical workers	35	11	31.4	1.0	4	11.4	1.0	125	42	33.6	1.0	8	6.4	1.0		
Teachers/ Nursery nurses	9	4	44.4	1.4	2	22.2	1.9	18	7	38.9	1.2	2	11.1	1.7		
Other regular workers	507	261	51.5	1.6	107	21.1	1.8	174	75	43.1	1.3	26	14.9	2.3		
Other temporary/ daily workers	46	28	60.9	1.9	22	47.8	4.2	45	23	51.1	1.5	12	26.7	4.2		
Other self-employed	73	39	53.4	1.7	19	26.0	2.3	29	16	55.2	1.6	8	27.6	4.3		
Jobless	160	104	65.0	2.1	61	38.1	3.3	99	57	57.6	1.7	25	25.3	3.9		
Others	84	33	39.3	1.3	9	10.7	0.9	77	36	46.8	1.4	12	15.6	2.4		
Total	971	519	53.5		243	25.0		609	274	45.0		102	16.7			

Others:Houskeepers/ Students/ Unknown

Ratio: The ratio of each proportion to that of medical workers

Previous table Drug susceptibility test results among newly notified pulmonary tuberculosis patients, by sex and age group, 2021 and 2007—2021

Age group	Total											New treatment (Re-count)									
	Male					Female						Male					Female				
	DST result obtained	MDR	Any INH resistance	Any RFP resistance	Any resistance	DST result obtained	MDR	Any INH resistance	Any RFP resistance	Any resistance	DST result obtained	MDR	Any INH resistance	Any RFP resistance	Any resistance	DST result obtained	MDR	Any INH resistance	Any RFP resistance	Any resistance	
2021 Calendar year																					
Total	2,793	25	152	40	339	1,758	16	69	16	136	2,646	22	142	34	316	1,689	14	63	14	128	
0-19	27	0	4	1	8	33	0	1	0	5	26	0	4	1	8	29	0	1	0	5	
20-29	186	4	14	5	30	159	8	13	8	22	181	4	14	5	30	153	7	12	7	21	
30-39	110	1	6	3	21	123	4	12	4	18	107	1	6	3	20	121	3	11	3	17	
40-49	148	5	8	6	15	101	3	9	3	14	143	5	8	6	15	100	3	9	3	14	
50-59	265	3	13	7	38	90	0	2	0	8	258	2	11	5	35	86	0	2	0	7	
60-69	330	3	22	4	43	102	0	2	0	6	316	3	22	3	42	98	0	2	0	6	
70-79	641	7	34	10	84	257	0	8	0	18	606	5	31	8	79	248	0	6	0	16	
80+	1,086	2	51	4	100	893	1	22	1	45	1,009	2	46	3	87	854	1	20	1	42	
2007~2021年	2007-2021 Calendar year																				
Total	66,578	488	3,427	730	7,787	36,207	292	1,648	379	3,550	61,034	329	2,870	507	6,865	34,183	195	1,383	265	3,160	
0-19	517	12	52	15	109	432	3	37	4	81	496	9	49	12	106	409	3	35	4	76	
20-29	3,658	81	314	106	653	3,050	89	261	110	524	3,505	63	283	83	611	2,920	66	230	83	481	
30-39	3,746	39	253	59	600	2,921	50	212	64	424	3,557	29	236	49	566	2,810	39	191	49	390	
40-49	5,049	46	277	71	671	2,522	27	137	38	313	4,751	36	251	53	609	2,400	18	122	28	287	
50-59	7,095	63	401	108	1,014	2,099	25	105	35	238	6,616	37	347	71	916	1,978	10	79	19	205	
60-69	10,956	71	581	127	1,424	3,057	20	155	26	353	10,091	51	488	88	1,250	2,881	14	126	18	308	
70-79	14,492	93	748	133	1,720	6,264	32	273	41	615	13,137	50	586	78	1,473	5,840	15	224	21	543	
80+	21,065	83	801	111	1,596	15,862	46	468	61	1,002	18,881	54	630	73	1,334	14,945	30	376	43	870	
2007~2021年	2007-2021 Calendar year																				
Total	100%	0.7	5.1	1.1	11.7	100%	0.8	4.6	1.0	9.8	100%	0.5	4.7	0.8	11.2	100%	0.6	4.0	0.8	9.2	
0-19	100	2.3	10.1	2.9	21.1	100	0.7	8.6	0.9	18.8	100	1.8	9.9	2.4	21.4	100	0.7	8.6	1.0	18.6	
20-29	100	2.2	8.6	2.9	17.9	100	2.9	8.6	3.6	17.2	100	1.8	8.1	2.4	17.4	100	2.3	7.9	2.8	16.5	
30-39	100	1.0	6.8	1.6	16.0	100	1.7	7.3	2.2	14.5	100	0.8	6.6	1.4	15.9	100	1.4	6.8	1.7	13.9	
40-49	100	0.9	5.5	1.4	13.3	100	1.1	5.4	1.5	12.4	100	0.8	5.3	1.1	12.8	100	0.8	5.1	1.2	12.0	
50-59	100	0.9	5.7	1.5	14.3	100	1.2	5.0	1.7	11.3	100	0.6	5.2	1.1	13.8	100	0.5	4.0	1.0	10.4	
60-69	100	0.6	5.3	1.2	13.0	100	0.7	5.1	0.9	11.5	100	0.5	4.8	0.9	12.4	100	0.5	4.4	0.6	10.7	
70-79	100	0.6	5.2	0.9	11.9	100	0.5	4.4	0.7	9.8	100	0.4	4.5	0.6	11.2	100	0.3	3.8	0.4	9.3	
80+	100	0.4	3.8	0.5	7.6	100	0.3	3.0	0.4	6.3	100	0.3	3.3	0.4	7.1	100	0.2	2.5	0.3	5.8	

DST: Drug susceptibility test. MDR: Multi-drug resistance, i.e., resistant to at least INH and RFP.

INH: Isoniazid. RFP: Rifampicin.

Previous table Drug susceptibility test results among newly notified pulmonary tuberculosis patients, by sex and age group, 2007-2021 (Re-count of foreigners)

Age group	Total										New treatment (Re-count)									
	Male					Female					Male					Female				
	DST result obtained	MDR	Any INH resistance	Any RFP resistance	Any resistance	DST result obtained	MDR	Any INH resistance	Any RFP resistance	Any resistance	DST result obtained	MDR	Any INH resistance	Any RFP resistance	Any resistance	DST result obtained	MDR	Any INH resistance	Any RFP resistance	Any resistance
2007-2021 Calendar year																				
Total	3,002	114	358	141	582	2,975	132	367	157	574	2,862	81	313	106	529	2,837	102	325	122	518
0-19	170	11	36	13	54	116	2	14	3	19	164	8	33	10	51	112	2	13	3	18
20-29	1,622	72	204	90	327	1,397	77	181	93	298	1,560	55	179	70	299	1,345	59	158	72	269
30-39	521	20	56	25	95	714	30	101	33	142	496	15	51	20	87	683	23	92	25	131
40-49	230	5	18	7	35	369	10	36	12	58	216	1	13	2	28	346	7	33	8	52
50-59	156	2	9	2	15	173	6	20	8	31	149	0	7	0	13	158	5	15	7	24
60-69	138	4	23	4	38	83	3	9	4	12	128	4	21	4	36	80	3	9	4	12
70-79	83	0	7	0	9	50	4	6	4	9	74	0	5	0	7	44	3	5	3	7
80+	82	0	5	0	9	73	0	0	0	5	75	0	4	0	8	69	0	0	0	5
2007-2021 Calendar year																				
Total	100%	3.8	11.9	4.7	19.4	100%	4.4	12.3	5.3	19.3	100%	2.8	10.9	3.7	18.5	100%	3.6	11.5	4.3	18.3
0-19	100	6.5	21.2	7.6	31.8	100	1.7	12.1	2.6	16.4	100	4.9	20.1	6.1	31.1	100	1.8	11.6	2.7	16.1
20-29	100	4.4	12.6	5.5	20.2	100	5.5	13.0	6.7	21.3	100	3.5	11.5	4.5	19.2	100	4.4	11.7	5.4	20.0
30-39	100	3.8	10.7	4.8	18.2	100	4.2	14.1	4.6	19.9	100	3.0	10.3	4.0	17.5	100	3.4	13.5	3.7	19.2
40-49	100	2.2	7.8	3.0	15.2	100	2.7	9.8	3.3	15.7	100	0.5	6.0	0.9	13.0	100	2.0	9.5	2.3	15.0
50-59	100	1.3	5.8	1.3	9.6	100	3.5	11.6	4.6	17.9	100	0.0	4.7	0.0	8.7	100	3.2	9.5	4.4	15.2
60-69	100	2.9	16.7	2.9	27.5	100	3.6	10.8	4.8	14.5	100	3.1	16.4	3.1	28.1	100	3.8	11.3	5.0	15.0
70-79	100	0.0	8.4	0.0	10.8	100	8.0	12.0	8.0	18.0	100	0.0	6.8	0.0	9.5	100	6.8	11.4	6.8	15.9
80+	100	0.0	6.1	0.0	11.0	100	0.0	0.0	0.0	6.8	100	0.0	5.3	0.0	10.7	100	0.0	0.0	0.0	7.2

DST: Drug susceptibility test. MDR: Multi-drug resistance, i.e., resistant to at least INH and RFP. INH: Isoniazid. RFP: Rifampicin.