

【患者発見】

表1 新登録結核患者の発見方法、2007～2021年

Table1 Proportion of mode of detection among newly notified tuberculosis patients, 2007-2021

年 Year	新登録 患者 Newly notified TB patients	個別 健診 Individual medical checkup	定期健診 Mass screening								接触者健診 Contact examination				医療機関 Medical institutions						その他 Others		不明 Unknown		
			学校 Schools		住民 Residents		職場 Employees		施設 Facilities		家族 Family		その他 Others		有症状受診(*1) Outpatients with TB symptoms(*1)		入院中 Inpatients with other diseases		通院中 Outpatients with other diseases		n	%	n	%	
			n	%	n	%	n	%	n	%	n	%	n	%	n	%	n	%							
2007	25,311	537	2.1	217	0.9	636	2.5	1,931	7.6	145	0.6	355	1.4	370	1.5	16,997	67.2	2,031	8.0	1,611	6.4	340	1.3	141	0.6
2008	24,760	639	2.6	195	0.8	486	2.0	1,877	7.6	144	0.6	325	1.3	410	1.7	15,347	62.0	2,681	10.8	2,100	8.5	316	1.3	240	1.0
2009	24,170	611	2.5	197	0.8	550	2.3	1,749	7.2	136	0.6	324	1.3	311	1.3	14,864	61.5	2,752	11.4	2,220	9.2	301	1.2	155	0.6
2010	23,261	507	2.2	244	1.0	544	2.3	1,618	7.0	128	0.6	313	1.3	350	1.5	13,901	59.8	2,792	12.0	2,305	9.9	333	1.4	226	1.0
2011	22,681	470	2.1	188	0.8	497	2.2	1,531	6.8	126	0.6	354	1.6	482	2.1	13,177	58.1	2,916	12.9	2,515	11.1	330	1.5	95	0.4
2012	21,283	409	1.9	163	0.8	498	2.3	1,424	6.7	121	0.6	315	1.5	374	1.8	12,284	57.7	2,941	13.8	2,312	10.9	357	1.7	85	0.4
2013	20,495	413	2.0	172	0.8	455	2.2	1,246	6.1	89	0.4	314	1.5	333	1.6	11,978	58.4	2,745	13.4	2,306	11.3	336	1.6	108	0.5
2014	19,615	344	1.8	201	1.0	404	2.1	1,221	6.2	92	0.5	303	1.5	333	1.7	11,441	58.3	2,591	13.2	2,210	11.3	328	1.7	147	0.7
2015	18,280	319	1.7	192	1.1	359	2.0	1,147	6.3	78	0.4	248	1.4	263	1.4	10,556	57.7	2,630	14.4	2,043	11.2	144	0.8	127	0.7
2016	17,625	319	1.8	250	1.4	355	2.0	1,056	6.0	98	0.6	211	1.2	409	2.3	10,073	57.2	2,471	14.0	1,971	11.2	146	0.8	98	0.6
2017	16,789	331	2.0	259	1.5	336	2.0	1,088	6.5	70	0.4	256	1.5	323	1.9	9,338	55.6	2,528	15.1	1,900	11.3	150	0.9	73	0.4
2018	15,590	290	1.9	226	1.4	288	1.8	1,077	6.9	74	0.5	239	1.5	314	2.0	8,617	55.3	2,317	14.9	1,798	11.5	139	0.9	56	0.4
2019	14,460	278	1.9	226	1.6	314	2.2	983	6.8	76	0.5	210	1.5	358	2.5	7,746	53.6	2,288	15.8	1,690	11.7	104	0.7	62	0.4
2020	12,739	207	1.6	80	0.6	203	1.6	787	6.2	34	0.3	190	1.5	199	1.6	7,096	55.7	2,102	16.5	1,583	12.4	124	1.0	50	0.4
2021	11,519	195	1.7	124	1.1	205	1.8	725	6.3	42	0.4	142	1.2	140	1.2	6,320	54.9	1,986	17.2	1,398	12.1	99	0.9	60	0.5
2021年																									
Age group																									
0～9	19	-	-	-	-	-	-	-	-	-	-	7	36.8	-	-	5	26.3	2	10.5	-	-	5	26.3	-	-
10～19	108	-	-	29	26.9	-	-	5	4.6	-	-	11	10.2	1	0.9	49	45.4	2	1.9	-	-	3	2.8	1	0.9
20～29	930	19	2.0	86	9.2	-	-	203	21.8	2	0.2	17	1.8	29	3.1	503	54.1	19	2.0	27	2.9	5	0.5	7	0.8
30～39	597	15	2.5	6	1.0	3	0.5	144	24.1	3	0.5	14	2.3	10	1.7	337	56.4	20	3.4	34	5.7	3	0.5	4	0.7
40～49	640	34	5.3	2	0.3	7	1.1	129	20.2	3	0.5	15	2.3	13	2.0	346	54.1	25	3.9	50	7.8	3	0.5	5	0.8
50～59	841	16	1.9	1	0.1	19	2.3	133	15.8	2	0.2	22	2.6	21	2.5	461	54.8	62	7.4	86	10.2	5	0.6	5	0.6
60～69	1,070	32	3.0	-	-	37	3.5	82	7.7	2	0.2	15	1.4	20	1.9	560	52.3	125	11.7	163	15.2	19	1.8	5	0.5
70～79	2,241	45	2.0	-	-	66	2.9	27	1.2	7	0.3	18	0.8	17	0.8	1,163	51.9	430	19.2	422	18.8	20	0.9	11	0.5
80～89	3,440	28	0.8	-	-	61	1.8	2	0.1	15	0.4	20	0.6	14	0.4	1,908	55.5	845	24.6	495	14.4	26	0.8	13	0.4
90～	1,633	6	0.4	-	-	12	0.7	-	-	8	0.5	3	0.2	15	0.9	988	60.5	456	27.9	121	7.4	10	0.6	9	0.6

TB: tuberculosis

\*1 有症状:咳・痰・血痰・喀血等の「呼吸器症状」や、喘鳴、胸痛、背部痛、息切れ、発熱、寝汗、全身倦怠、体重減少等の「その他の症状」を有する場合。

TB symptoms: Respiratory symptoms such as cough, sputum expectoration, bloody sputum, and hemoptysis; and other symptoms such as wheezing, chest pain, back pain, dyspnea, fever, night sweating, fatigue tendency, and weight loss. In total, there are 33 cases of other group examination and 50 cases of diagnosis during registration.

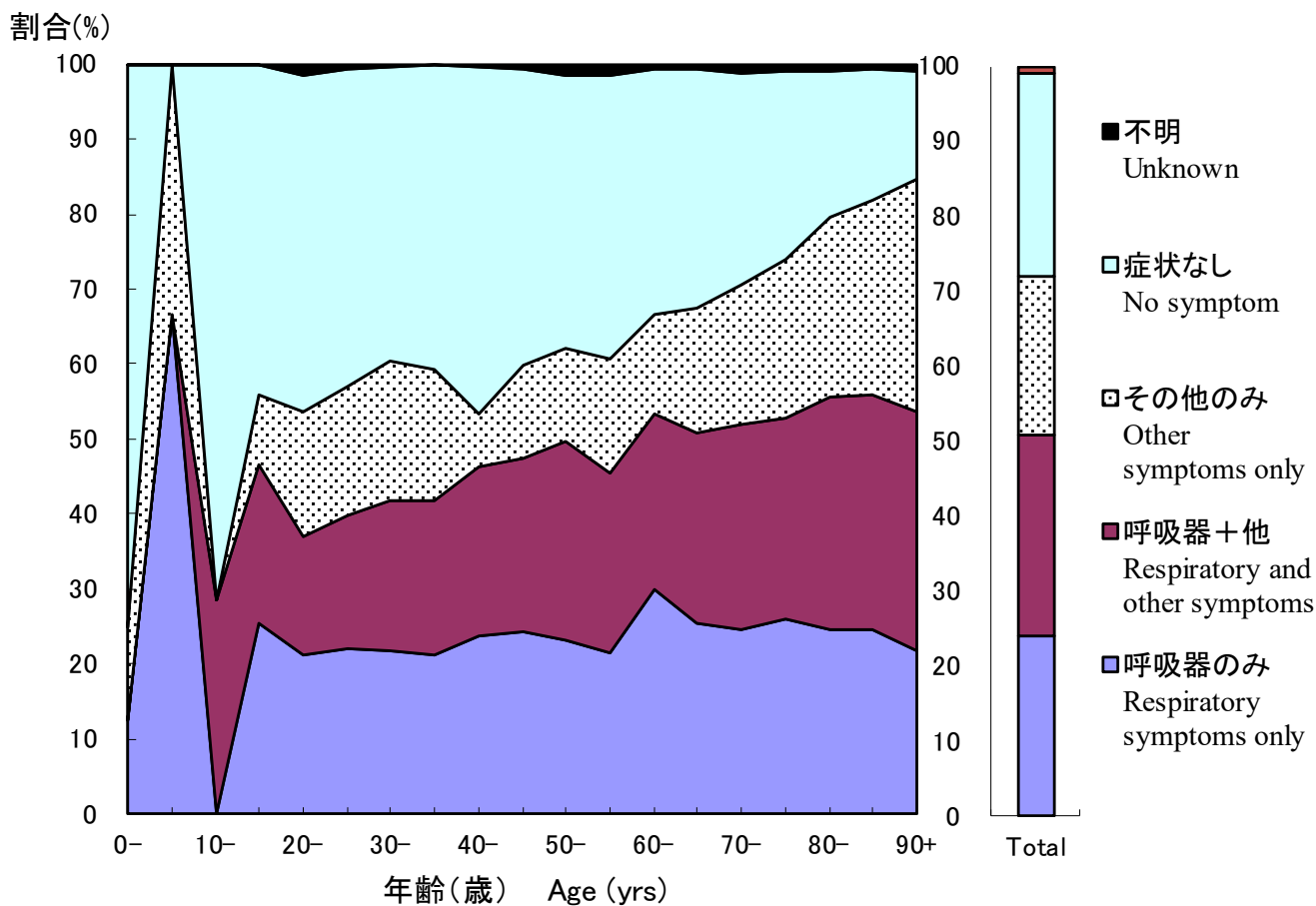


図 1 新登録肺結核中年齢5歳階層別症状の有無、2021年

Fig.1 Proportion of symptoms among newly notified pulmonary tuberculosis patients by 5- years age group, in 2021

呼吸器症状は咳、痰、血痰、喀血を含む。その他の症状は喘鳴、胸痛、背部痛、息切れ、発熱、寝汗、全身倦怠、体重減少を含む。

Respiratory symptoms include cough, sputum expectoration, bloody sputum, and hemoptysis. Other symptoms include wheezing, chest pain, back pain, dyspnea, fever, night sweating, fatigue tendency, and weight loss.

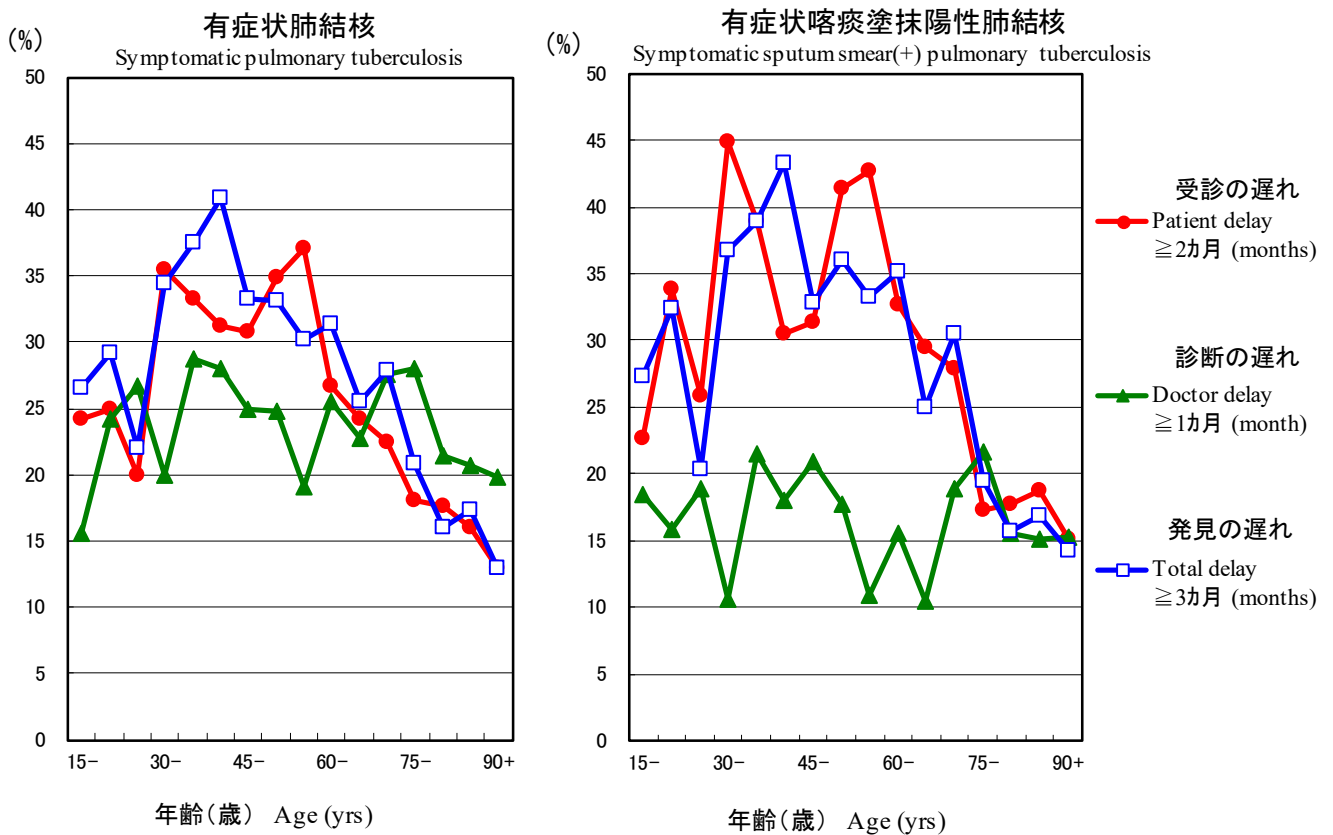


図 2 新登録有症状肺結核中年齢5歳階層別発見の遅れの割合、2021年

Fig.2 Proportion of patient delay, doctor delay and total delay among symptomatic pulmonary tuberculosis patients by 5-year age group, in 2021

受診の遅れ:「発病の時期」(結核の症状が初めて自覚された時期)から「初診の時期」(結核による症状を訴えて初めて医療機関を受診した時期)までの期間が $\geq 2$ ヵ月以上である場合。

Patient delay: time interval from the onset of symptoms to the first visit to a medical institution of 2 months or longer

診断の遅れ:「初診の時期」から「診断の時期」(結核と診断された時期)までの期間が $\geq 1$ ヵ月以上である場合。

Doctor delay: time interval from the first visit to a medical institution to the diagnosis of tuberculosis of 1 month or longer

発見の遅れ:「発病の時期」から「診断の時期」までの期間が $\geq 3$ ヵ月以上である場合。

Total delay: time interval from the onset of symptoms to the diagnosis of tuberculosis is 3 months or longer

旧表 新登録結核患者の発見方法、年齢階層別、2021年

Previous table Proportion of mode of detection among newly notified TB patients by age group, 2021

年齢階層 Age groups	新登録患者 Newly notified TB patients	個別健診 Individual medical checkup	定期健診 Mass screening				接触者健診 Contact examination		医療機関 Medical institutions			その他 Others	不明 Unknown
			学校 Schools	住民 Residents	職場 Employees	施設 Facilities	家族 Family	その他 Others	有症状受診 Outpatients with TB symptoms (*1)	入院中 Inpatients with other diseases	通院中 Outpatients with other diseases		
	n	%	%	%	%	%	%	%	%	%	%	%	%
全結核 All forms of TB													
総数 Total	11,519	1.7	1.1	1.8	6.3	0.4	1.2	1.2	54.9	17.2	12.1	0.9	0.5
0-14	29	0.0	3.4	0.0	0.0	0.0	37.9	0.0	34.5	6.9	0.0	17.2	0.0
15-19	98	0.0	28.6	0.0	5.1	0.0	7.1	1.0	44.9	2.0	0.0	3.1	1.0
20-24	447	2.2	13.9	0.0	20.8	0.4	1.8	2.7	50.3	2.2	2.5	0.7	0.7
25-29	483	1.9	5.0	0.0	22.8	0.0	1.9	3.5	57.6	1.9	3.3	0.4	0.8
30-34	315	2.2	1.9	1.0	26.0	0.6	1.6	1.3	56.2	2.9	4.1	1.0	0.3
35-39	282	2.8	0.0	0.0	22.0	0.4	3.2	2.1	56.7	3.9	7.4	0.0	1.1
40-44	274	5.1	0.4	2.2	21.9	0.0	1.5	2.6	54.4	3.6	6.2	0.4	0.4
45-49	366	5.5	0.3	0.3	18.9	0.8	3.0	1.6	53.8	4.1	9.0	0.5	1.1
50-54	447	1.3	0.0	1.6	16.3	0.4	2.0	2.5	58.2	5.8	9.8	0.4	0.9
55-59	394	2.5	0.3	3.0	15.2	0.0	3.3	2.5	51.0	9.1	10.7	0.8	0.3
60-64	452	4.0	0.0	2.7	10.6	0.0	1.5	1.8	51.8	10.2	13.5	2.0	0.7
65-69	618	2.3	0.0	4.0	5.5	0.3	1.3	1.9	52.8	12.8	16.5	1.6	0.3
70-74	1,011	2.6	0.0	3.2	2.2	0.2	1.1	0.9	50.6	17.7	19.6	0.8	0.4
75-79	1,230	1.5	0.0	2.8	0.4	0.4	0.6	0.7	52.9	20.4	18.2	1.0	0.6
80-84	1,591	0.7	0.0	1.6	0.1	0.2	0.4	0.4	56.3	22.8	16.3	0.5	0.3
85-89	1,849	0.9	0.0	1.9	0.0	0.6	0.7	0.4	54.8	26.1	12.8	1.0	0.4
90+	1,633	0.4	0.0	0.7	0.0	0.5	0.2	0.9	60.5	27.9	7.4	0.6	0.6
(再掲)喀痰塗抹陽性肺結核 (Re-count) Sputum smear positive pulmonary TB (2023/8/29 修正)													
総数 Total	4,127	1.1	0.6	1.2	4.0	0.3	0.5	0.6	60.7	18.3	11.1	0.8	0.4
0-14	2	0.0	0.0	0.0	0.0	0.0	0.0	0.0	100.0	0.0	0.0	0.0	0.0
15-19	35	0.0	11.4	0.0	11.4	0.0	8.6	0.0	57.1	0.0	0.0	2.9	0.0
20-24	108	0.9	12.0	0.0	14.8	0.9	0.9	0.9	65.7	1.9	0.0	0.0	0.9
25-29	94	1.1	5.3	0.0	14.9	0.0	0.0	2.1	72.3	2.1	0.0	1.1	1.1
30-34	83	0.0	1.2	1.2	19.3	1.2	0.0	1.2	66.3	3.6	3.6	1.2	0.0
35-39	86	2.3	0.0	0.0	17.4	0.0	3.5	1.2	67.4	1.2	5.8	0.0	1.2
40-44	72	2.8	0.0	5.6	19.4	0.0	1.4	0.0	63.9	2.8	2.8	1.4	0.0
45-49	110	2.7	0.0	0.0	17.3	1.8	1.8	0.9	65.5	1.8	6.4	0.9	0.0
50-54	159	0.6	0.0	0.6	13.2	0.0	0.6	0.0	70.4	3.8	10.1	0.0	0.6
55-59	132	1.5	0.0	0.8	12.1	0.0	1.5	2.3	63.6	7.6	9.1	0.8	0.0
60-64	169	3.6	0.0	2.4	7.7	0.0	0.0	1.2	62.7	5.9	13.0	2.4	1.2
65-69	210	2.9	0.0	1.0	3.8	0.0	0.5	0.0	63.3	11.9	13.8	1.9	0.0
70-74	354	2.0	0.0	1.1	2.8	0.0	0.3	0.8	55.6	17.5	17.8	1.1	0.6
75-79	440	1.1	0.0	2.0	0.0	0.2	0.2	0.5	55.5	23.6	15.5	0.5	0.2
80-84	603	0.3	0.0	1.2	0.0	0.2	0.0	0.5	56.2	25.2	15.4	0.5	0.3
85-89	771	0.5	0.0	1.9	0.0	0.5	0.6	0.4	58.4	24.3	11.8	0.9	0.4
90+	699	0.3	0.0	0.4	0.0	0.4	0.0	0.1	64.1	26.9	6.7	0.3	0.4

TB: tuberculosis

\*1 有症状: 咳・痰・血痰・喀血等の「呼吸器症状」や、喘鳴、胸痛、背部痛、息切れ、発熱、寝汗、全身倦怠、体重減少等の「その他の症状」を有する場合。

TB symptoms: Respiratory symptoms such as cough, sputum expectoration, bloody sputum, and hemoptysis; and other symptoms such as wheezing, chest pain, back pain, dyspnea, fever, night sweating, fatigue tendency, and weight loss.

旧表改訂 新登録結核患者数、職業・性・年齢階層別、2021年

Previous table Number of newly notified TB patients by occupation, sex and age group, 2021

性/年齢	総数	接客業	看護師 /保健 師	医師	他医療 従事者	教員/ 保育士	生徒/ 学生	他常用 勤労者	他臨時 /日雇	他自営/ 自由業	家事従 事者	保育園児/ 幼稚園児/ 他の乳幼児	無職/ 他	不明
Sex/Age group	Total	Service workers	Nurses/P ublic health nurses	Medical doctors	Other medical workers	Teachers/ Nursery nurses	Pupils/St udents	Other regular workers	Other temporar y/daily workers	Other self- employed	Housekee pers	Infants/ Little children	Jobless/ Others	Unknown
男 Male	6,726	122	15	18	49	18	156	1,183	207	344	7	5	4,387	215
0-14	12	0	0	0	0	0	7	0	0	0	0	5	0	0
15-19	48	1	0	0	0	0	37	7	0	0	0	0	3	0
20-24	235	3	2	0	5	1	72	95	14	3	0	0	32	8
25-29	260	9	1	1	5	2	29	152	20	4	0	0	30	7
30-39	291	26	5	0	10	1	8	169	10	15	1	0	38	8
40-49	354	25	4	4	11	2	1	191	18	24	0	0	54	20
50-59	545	17	2	5	4	7	1	260	27	48	0	0	149	25
60-69	760	17	1	3	11	4	0	195	43	81	1	0	366	38
70-79	1,513	19	0	2	3	1	1	97	59	97	1	0	1,176	57
80+	2,708	5	0	3	0	0	0	17	16	72	4	0	2,539	52
女 Female	4,793	96	101	9	163	26	154	456	126	86	86	8	3,347	135
0-14	17	0	0	0	0	0	8	0	0	0	0	8	1	0
15-19	50	0	0	0	2	0	39	3	1	0	0	0	5	0
20-24	212	5	7	0	16	2	67	61	16	1	1	0	28	8
25-29	223	13	5	0	21	0	29	90	13	1	6	0	37	8
30-39	306	19	11	5	28	8	10	107	23	6	11	0	65	13
40-49	286	22	29	1	33	6	1	76	28	16	12	0	50	12
50-59	296	13	34	0	31	6	0	72	20	18	17	0	71	14
60-69	310	11	12	1	22	3	0	37	17	9	13	0	167	18
70-79	728	10	3	1	8	1	0	8	7	15	12	0	638	25
80+	2,365	3	0	1	2	0	0	2	1	20	14	0	2,285	37

旧表 職業別、20～59歳新登録肺結核患者の発見方法別割合、2021年  
 Previous table Proportion of mode of detection among newly notified pulmonary TB patients aged 20-59 years by occupation, 2021

	肺結核 Pulmonary TB patients	個別健診 Individual medical checkup	定期健診 Mass screening			接触者健診 Contact examination		医療機関 Clinics/Hospitals			その他/ 不明 Others/Un known
			住民 Residents	職場 Employe es	学校/施 設 Schools/F acilities	家族 Family	その他 Others	有症状 受診(*2) Outpatient s with TB symptoms	入院中 with other diseases	通院中 with other diseases	
	<i>n</i>	%	%	%	%	%	%	%	%	%	%
総数 Total	2,304	3.0	1.3	25.5	4.3	2.8	3.0	48.6	3.6	5.8	2.0
接客業 Service workers	123	4.9	3.3	22.8	0.8	3.3	2.4	53.7	5.7	3.3	0.0
医療関係者 Medical workers(*1)	211	2.8	0.0	30.3	0.9	1.4	10.9	43.6	2.4	5.7	1.9
教員・保育士 Teachers/ Nursery nurses	30	3.3	3.3	20.0	0.0	13.3	0.0	50.0	6.7	0.0	3.3
学生 Students	180	1.1	0.0	3.3	46.1	1.1	4.4	38.3	0.6	1.7	3.3
他の常用勤労者 Other regular workers	987	2.4	0.6	39.9	0.0	2.5	2.4	43.4	2.6	4.9	1.2
他の臨時・日雇 Other temporary/ daily workers	136	2.9	2.9	18.4	0.7	5.1	1.5	58.1	0.7	4.4	5.1
他の自営自由業 Other self-employed	110	5.5	6.4	9.1	0.9	2.7	1.8	59.1	1.8	11.8	0.9
家事 Housekeepers	31	9.7	3.2	3.2	0.0	0.0	0.0	71.0	3.2	9.7	0.0
無職・その他 Jobless/ Others	407	3.2	1.0	9.8	2.5	3.2	1.7	58.2	7.9	10.1	2.5
不明 Unknown	89	5.6	2.2	15.7	1.1	4.5	0.0	52.8	7.9	4.5	5.6

\*1 医療関係者：看護師・保健師・助産師、医師、その他医療職含む。

Medical workers include nurses, public health nurses, medical doctors and dentists, physical therapists, occupational therapists, medical technologists, radiographers, and co-medicals.

\*2 有症状：咳・痰・血痰・喀血等の「呼吸器症状」や、喘鳴、胸痛、背部痛、息切れ、発熱、寝汗、全身倦怠、体重減少等の「その他の症状」を有する場合。  
 TB symptoms: Respiratory symptoms such as cough, sputum expectoration, bloody sputum, and hemoptysis; and other symptoms such as wheezing, chest pain, back pain, dyspnea, fever, night sweating, fatigue tendency, and weight loss.

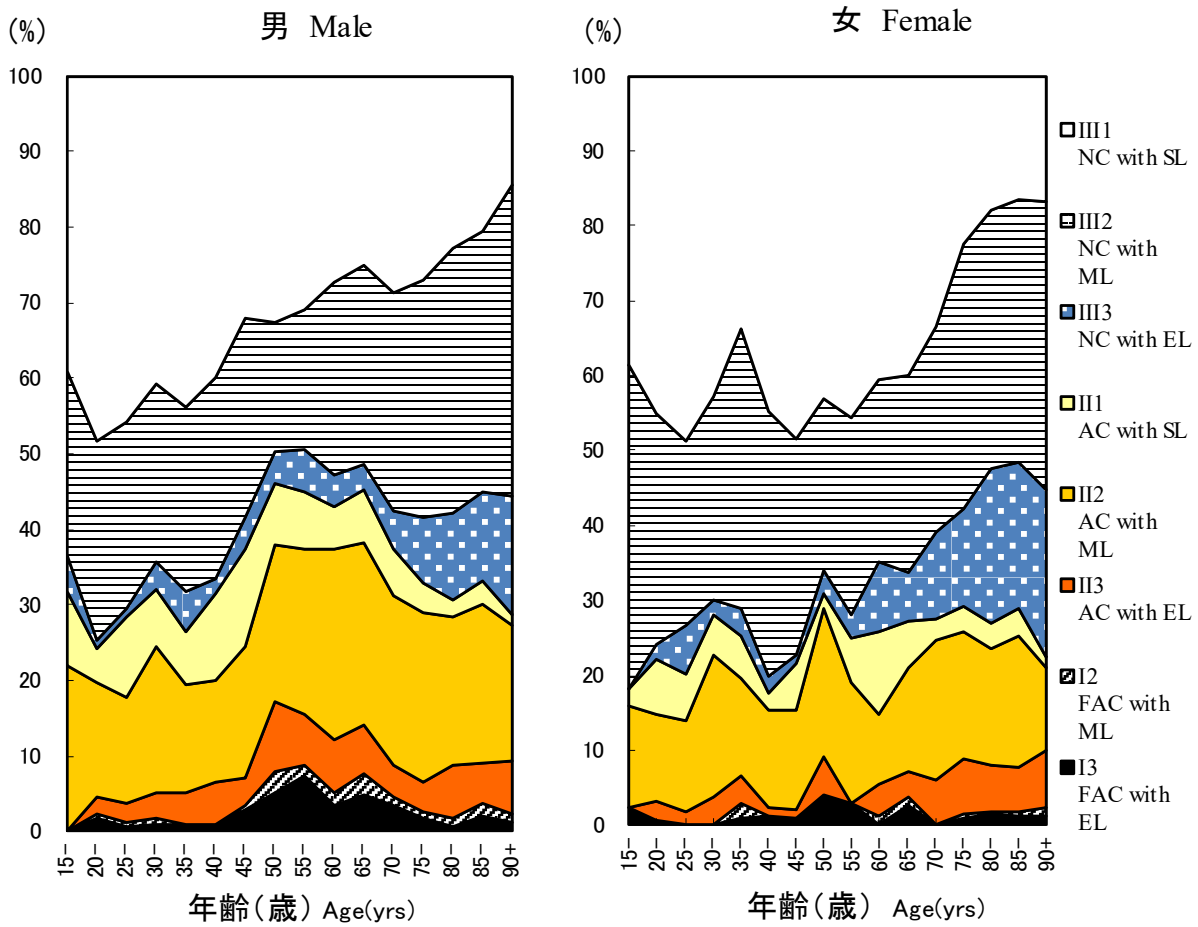


图 3 新登録肺結核患者中胸部X線写真学会分類別所見割合, 性・年齢5 歳階級別, 2021 年  
 Fig.3 Proportion of cases classified by X-ray classification by sex and 5-yearage group, 2021

NC : Non-cavitary SL : Slight lesion AC : Advanced cavitory ML : Moderate lesion  
 FAC: Far-advance cavitory EL : Extensive lesion

表2 新登録結核患者中「HIV合併あり」と報告された患者数、性・年齢階層別、2021年および2007～2021年  
Table 2 Number of newly notified tuberculosis patients with HIV infection, by sex and age group, 2021 and 2007–2021

年齢階層 Age group	喀痰塗抹陽性 Sputum smear positive		他結核菌陽性 Other bacteriologically-positive		菌陰性結核 Bacteriologically-negative		肺外結核 Extra-pulmonary		総数 Total	
	男 M	女 F	男 M	女 F	男 M	女 F	男 M	女 F	男 M	女 F
2021年	2021 Calendar year									
総計 Total	3 (1)	3 (1)	4 (2)	2 (2)	3 (1)	0	13 (6)	2 (2)	23 (10)	7 (5)
0-19	0	0	0	0	0	0	1	0	1	0
20-24	0	0	0	0	0	0	0	0	0	0
25-29	0	1 (1)	3 (1)	1 (1)	0	0	2 (2)	0	5 (3)	2 (2)
30-34	1 (1)	1	0	1 (1)	0	0	0	1 (1)	1 (1)	3 (2)
35-39	0	0	0	0	0	0	2 (2)	0	2 (2)	0
40-44	0	0	0	0	2 (1)	0	0	0	2 (1)	0
45-49	0	0	1 (1)	0	0	0	1 (1)	0	2 (2)	0
50-54	2	0	0	0	0	0	2	1 (1)	4	1 (1)
55-59	0	0	0	0	0	0	0	0	0	0
60-64	0	0	0	0	0	0	1	0	1	0
65-69	0	0	0	0	0	0	1 (1)	0	1 (1)	0
70-74	0	0	0	0	0	0	2	0	2	0
75-79	0	0	0	0	0	0	0	0	0	0
80+	0	1	0	0	1	0	1	0	2	1
2007～2021年	2007-2021 Calendar year									
総計 Total	194 (27)	50 (24)	113 (30)	19 ##	54 (12)	11 (8)	238 (55)	34 (20)	599 (124)	114 (65)
0-19	1 (1)	0	0	0	1 (1)	0	3	0	5 (2)	0
20-24	10 (8)	0	4 (3)	1 (1)	1 (1)	1 (1)	3 (2)	1	18 (14)	3 (2)
25-29	10 (5)	8 (7)	7 (3)	2 (2)	1 (1)	2 (2)	19 (8)	1 (1)	37 (17)	13 (12)
30-34	15 (5)	6 (5)	13 (2)	5 (4)	4 (2)	1 (1)	29 (10)	6 (4)	61 (19)	18 (14)
35-39	25 (2)	4 (3)	21 (6)	3 (3)	9 (2)	3 (3)	40 (12)	6 (5)	95 (22)	16 (14)
40-44	32 (2)	7 (5)	16 (5)	0	11 (3)	3 (1)	45 (15)	8 (6)	104 (25)	18 (12)
45-49	19 (2)	3 (3)	15 (7)	1 (1)	6 (1)	0	36 (6)	2	76 (16)	6 (4)
50-54	18 (1)	1	12 (2)	2 (1)	6 (1)	0	18 (1)	1 (1)	54 (5)	4 (2)
55-59	11	0	7 (2)	0	4	0	11	3 (3)	33 (2)	3 (3)
60-64	19	1	6	1 (1)	3	0	10	0	38	2 (1)
65-69	10	1 (1)	6	0	5	0	11 (1)	1	32 (1)	2 (1)
70-74	6 (1)	3	3	2	1	0	7	2	17 (1)	7
75-79	7	1	0	0	1	0	3	2	11	3
80+	11	15	3	2	1	1	3	1	18	19

( ): 外国人患者の再掲 Re-count of foreigners

HIV : Human Immunodeficiency Virus. M : male patients, F : female patients.



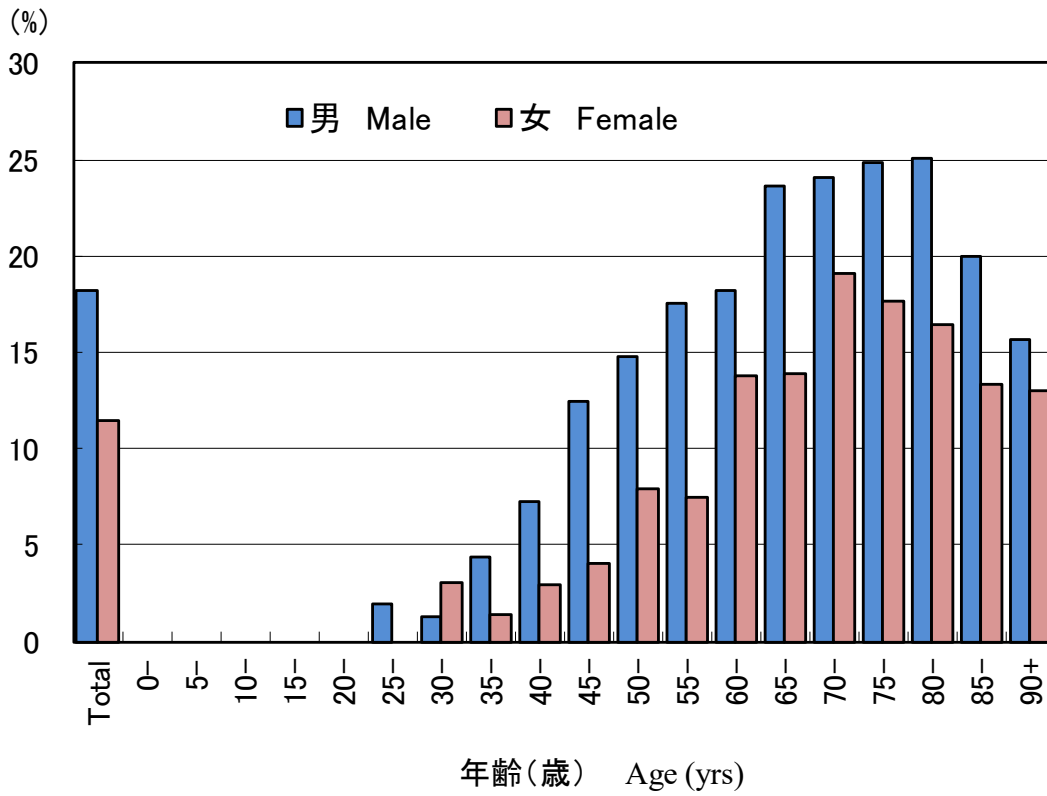


図4 新登録結核患者中「糖尿病合併あり」と報告された患者の割合、性・年齢階層別、2021年  
 Fig.4 Proportion of newly notified tuberculosis patients with diabetes mellitus in each age-group by sex, 2021

表3 新登録肺結核患者から分離培養された結核菌の抗結核薬剤感受性検査結果、治療歴別、2012～2021年  
Table 3 Drug susceptibility test results among newly notified pulmonary tuberculosis patients, by treatment history, 2012–2021

治療歴、菌検査状況、耐性状況 Treatment history, Culture examination results, Drug susceptibility test results	2012				2013				2014				2015				2016				2017				2018				2019				2020				2021			
	n	%	%	%	n	%	%	%	n	%	%	%	n	%	%	%	n	%	%	%	n	%	%	%	n	%	%	%	n	%	%	%	n	%	%	%	n	%	%	%
<b>総数 Total</b>																																								
肺結核 Pulmonary tuberculosis	16,432	100%			15,972	100%			15,149	100%			14,123	100%			13,608	100%			13,011	100%			12,033	100%			11,094	100%			9,446	100%			8,413	100%		
培養結果把握 Culture result obtained	14,058	85.6			13,311	83.3			12,909	85.2			12,260	86.8			12,255	90.1			11,764	90.4			11,070	92.0			9,968	89.9			8,170	86.5			7,219	85.8		
培養陽性 Culture positive	11,261	68.5	100%		10,523	65.9	100%		10,259	67.7	100%		10,035	71.1	100%		9,878	72.6	100%		9,580	73.6	100%		9,016	74.9	100%		8,110	73.1	100%		6,645	70.3	100%		5,902	70.2	100%	
感受性結果把握 DST result obtained	8,347		74.1	100%	7,701		73.2	100%	7,645		74.5	100%	7,630		76.0	100%	7,732		78.3	100%	7,891		82.4	100%	7,570		84.0	100%	6,658		82.1	100%	5,209		78.4	100%	4,551		77.1	100%
多剤耐性 MDR	60		0.7	47	0.6		56	0.7	48	0.6		49	0.6	49	0.6		52	0.7	55	0.7		44	0.6		44	0.7	46	0.9		41	0.9		41	0.9		41				
INH 耐性 Any INH resistance	380		4.6	369	4.8		349	4.6	372	4.9		369	4.8	383	4.9		377	5.0	377	5.0		359	5.4		297	5.7	297	5.7		221	4.9		221	4.9		221				
RFP 耐性 Any RFP resistance	73		0.9	64	0.8		76	1.0	77	1.0		74	1.0	80	1.0		87	1.1	87	1.1		65	1.0		60	1.2	60	1.2		56	1.2		56	1.2		56				
1剤以上耐性 Any resistance*	810		9.7	757	9.8		749	9.8	767	10.1		741	9.6	853	10.8		781	10.3	781	10.3		719	10.8		579	11.1	579	11.1		475	10.4		475	10.4		475				
<b>初回治療 New treatment</b>																																								
肺結核 Pulmonary tuberculosis	15,040	100%			14,727	100%			13,956	100%			13,102	100%			12,686	100%			12,174	100%			11,298	100%			10,405	100%			8,891	100%			7,974	100%		
培養結果把握 Culture result obtained	12,882	85.7			12,279	83.4			11,897	85.2			11,394	87.0			11,435	90.1			11,018	90.5			10,405	92.1			9,358	89.9			7,681	86.4			6,849	85.9		
培養陽性 Culture positive	10,379	69.0	100%		9,782	66.4	100%		9,523	68.2	100%		9,379	71.6	100%		9,284	73.2	100%		9,030	74.2	100%		8,536	75.6	100%		7,652	73.5	100%		6,289	70.7	100%		5,622	70.5	100%	
感受性結果把握 DST result obtained	7,676		74.0	100%	7,166		73.3	100%	7,104		74.6	100%	7,135		76.1	100%	7,278		78.4	100%	7,434		82.3	100%	7,171		84.0	100%	6,288		82.2	100%	4,938		78.5	100%	4,335		77.1	100%
多剤耐性 MDR	38		0.5	31	0.4		40	0.6	33	0.5		37	0.5	41	0.6		41	0.6	41	0.6		35	0.6		31	0.6	31	0.6		36	0.8		36	0.8		36				
INH 耐性 Any INH resistance	310		4.0	326	4.5		288	4.1	317	4.4		316	4.3	338	4.5		331	4.6	331	4.6		319	5.1		260	5.3	260	5.3		205	4.7		205	4.7		205				
RFP 耐性 Any RFP resistance	46		0.6	42	0.6		58	0.8	58	0.8		56	0.8	62	0.8		68	0.9	68	0.9		52	0.8		44	0.9	44	0.9		48	1.1		48	1.1		48				
1剤以上耐性 Any resistance*	712		9.3	680	9.5		664	9.3	686	9.6		659	9.1	773	10.4		717	10.0	717	10.0		656	10.4		532	10.8	532	10.8		444	10.2		444	10.2		444				
<b>再治療 Re-treatment</b>																																								
肺結核 Pulmonary tuberculosis	1,094	100%			1,013	100%			968	100%			851	100%			735	100%			660	100%			575	100%			542	100%			424	100%			342	100%		
培養結果把握 Culture result obtained	959	87.7			852	84.1			848	87.6			732	86.0			665	90.5			605	91.7			532	92.5			477	88.0			374	88.2			292	85.4		
培養陽性 Culture positive	693	63.3	100%		586	57.8	100%		591	61.1	100%		534	62.7	100%		462	62.9	100%		423	64.1	100%		365	63.5	100%		341	62.9	100%		257	60.6	100%		209	61.1	100%	
感受性結果把握 DST result obtained	555		80.1	100%	435		74.2	100%	449		76.0	100%	412		77.2	100%	358		77.5	100%	362		85.6	100%	323		88.5	100%	286		83.9	100%	201		78.2	100%	166		79.4	100%
多剤耐性 MDR	22		4.0	16	3.7		15	3.3	14	3.4		12	3.4	12	3.4		9	2.5	11	3.4		9	3.1		13	3.1	13	6.5		4	2.4		4	2.4		4				
INH 耐性 Any INH resistance	67		12.1	35	8.0		57	12.7	49	11.9		51	14.2	36	9.9		41	12.7	41	12.7		36	12.6		31	15.4	31	15.4		11	6.6		11	6.6		11				
RFP 耐性 Any RFP resistance	26		4.7	22	5.1		17	3.8	18	4.4		16	4.5	15	4.1		16	5.0	16	5.0		13	4.5		14	7.0	14	7.0		7	4.2		7	4.2		7				
1剤以上耐性 Any resistance*	94		16.9	65	14.9		79	17.6	72	17.5		70	19.6	65	18.0		58	18.0	58	18.0		56	19.6		40	19.9	40	19.9		21	12.7		21	12.7		21				
<b>治療歴不明 No information about treatment history</b>																																								
肺結核 Pulmonary tuberculosis	298	100%			232	100%			225	100%			170	100%			187	100%			177	100%			160	100%			147	100%			131	100%			97	100%		
培養結果把握 Culture result obtained	217	72.8			180	77.6			164	72.9			134	78.8			155	82.9			141	79.7			133	83.1			133	90.5			115	87.8			78	80.4		
培養陽性 Culture positive	189	63.4	100%		155	66.8	100%		145	64.4	100%		122	71.8	100%		132	70.6	100%		127	71.8	100%		115	71.9	100%		117	79.6	100%		99	75.6	100%		71	73.2	100%	
感受性結果把握 DST result obtained	116		61.4	100%	100		64.5	100%	92		63.4	100%	83		68.0	100%	96		72.7	100%	95		74.8	100%	76		66.1	100%	84		71.8	100%	70		70.7	100%	50		70.4	100%
多剤耐性 MDR	0		0.0	0	0.0		0	1.1	1	1.2		0	0.0	2	2.1		3	3.9	3	3.9		0	0.0		2	2.9	2	2.9		1	2.0		1	2.0		1				
INH 耐性 Any INH resistance	3		2.6	8	8.0		4	4.3	6	7.2		2	2.1	9	9.5		5	6.6	4	6.6		4	4.8		6	8.6	6	8.6		5	10.0		5	10.0		5				
RFP 耐性 Any RFP resistance	1		0.9	0	0.0		1	1.1	1	1.2		2	2.1	3	3.2		3	3.9	3	3.9		0	0.0		2	2.9	1	2.9		1	2.0		1	2.0		1				
1剤以上耐性 Any resistance*	4		3.4	12	12.0		6	6.5	9	10.8		12	12.5	15	15.8		6	7.9	6	7.9		7	8.3		7	10.0	7	10.0		10	20.0		10	20.0		10				

DST: Drug susceptibility test MDR: Multi-drug resistant, i.e., resistant to at least INH and RFP INH: isoniazid RFP: rifampicin

感受性結果は重複あり Cases having drug resistance are counted independently by drug.

\*: INH, RFP, SM EBの4剤のうちのいずれかに耐性 resistant to either INH, RFP, SM, or EB

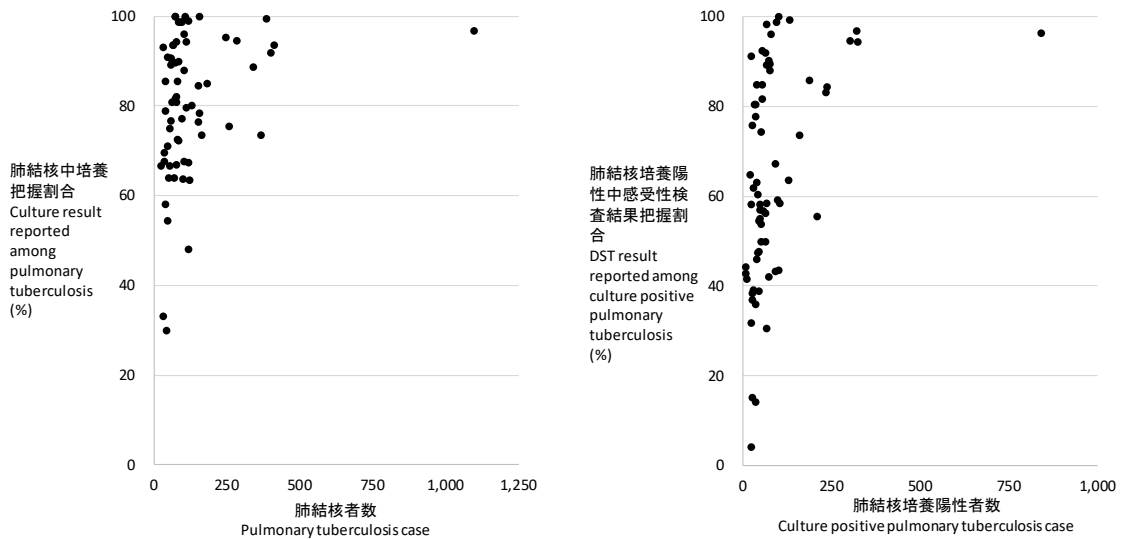
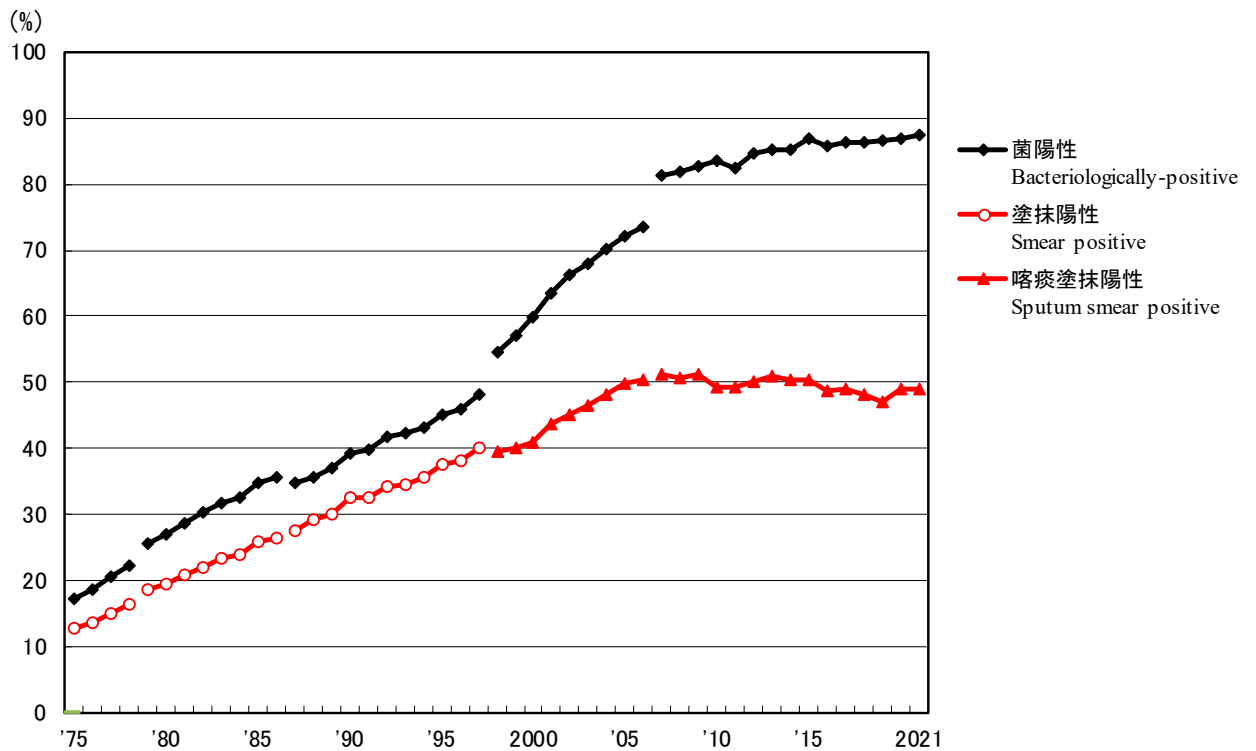


図 5 新登録肺結核患者数とその内培養把握割合の散布図(左)、及び新登録肺結核培養陽性者数とその内感受性検査結果把握割合の散布図(右)、都道府県政令指定都市別、2021年  
 Fig. 5 Scatter plot of culture results reported among pulmonary tuberculosis patients and anti-tuberculosis drug susceptibility test results among newly notified pulmonary tuberculosis patients, by prefecture and major city, 2021



旧 図 新登録肺結核患者中菌陽性割合の推移、1975～2021年

Previous Fig

Proportion of bacteriologically confirmed cases among newly notified pulmonary tuberculosis patients, 1975-2021

資料と対象 Sources of information and subjects:

結核登録者の定期報告 Annual tuberculosis reports from public health centers

1975-1978: 全結核 All forms of tuberculosis

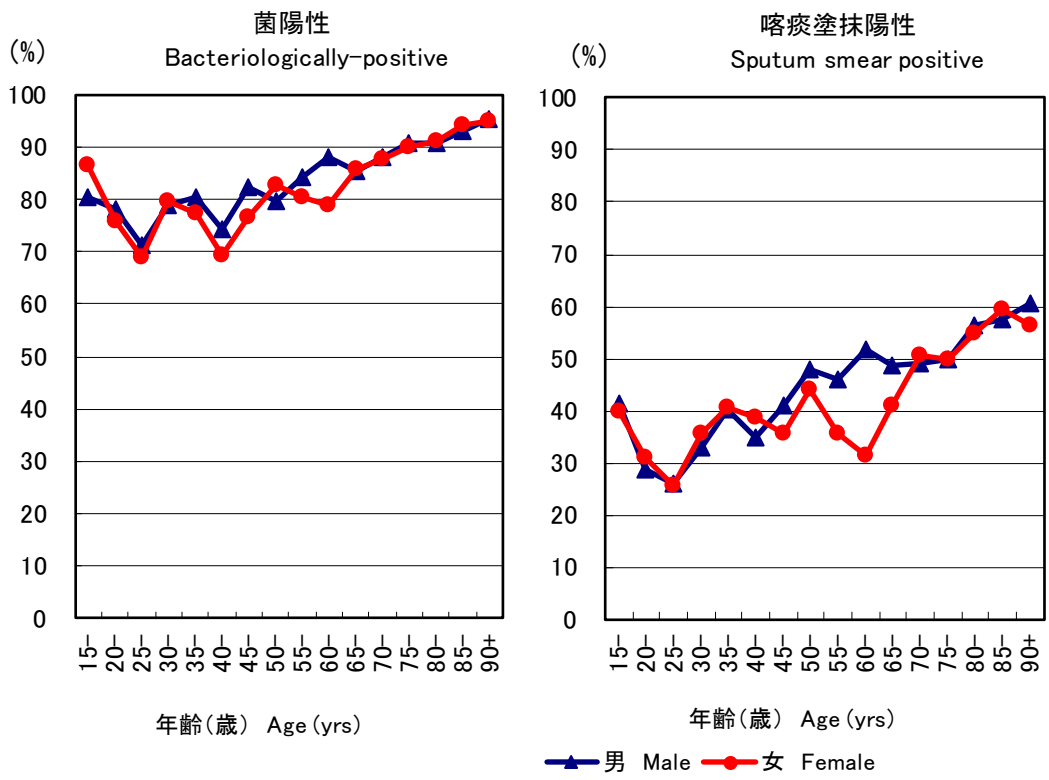
1979-1986: 肺結核 Pulmonary tuberculosis

電算化結核サーベイランスシステム Nationwide computerized tuberculosis surveillance system

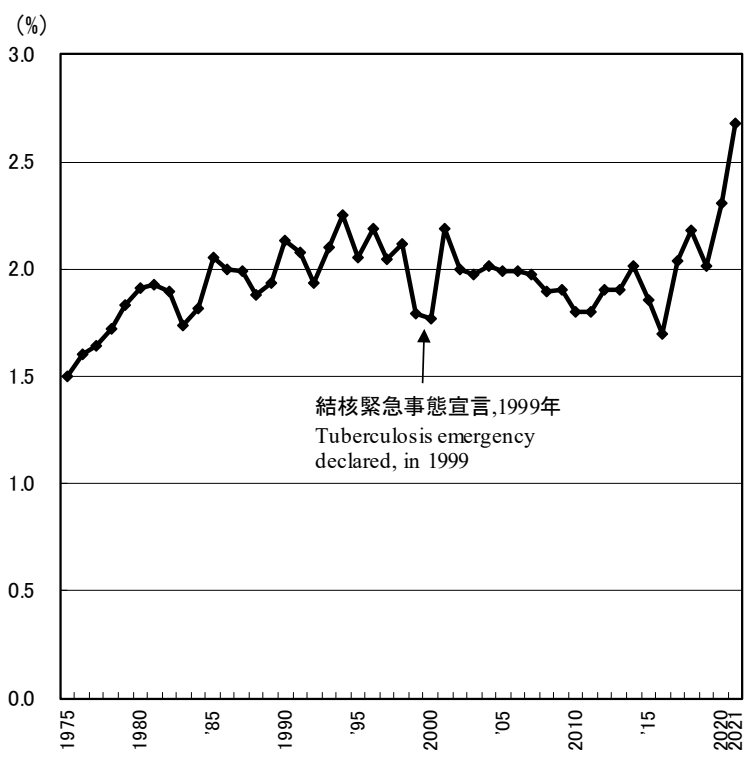
1987-1997: 肺結核 Pulmonary Tuberculosis

1998-2006: 肺結核(活動性分類の変更) Pulmonary tuberculosis (New patient criteria for notification were applied)

2007-2009: 肺結核(核酸増幅法項目の追加) Pulmonary tuberculosis (Item of nucleic acid amplification was added)



旧 図 新登録肺結核患者中菌陽性割合、性・年齢5歳階級別、2021年  
 Previous Fig. Proportion of bacteriologically confirmed cases among newly notified pulmonary tuberculosis patients by sex and 5-year age group, 2021



旧 図 新登録肺結核患者中胸部X線写真での広汎空洞型割合の推移、1975~2021年  
 Previous Fig. Proportion of far-advanced cavitory cases among newly notified pulmonary Tuberculosis patients, 1975-2021

旧表 性・職業別、30～59歳新登録肺結核患者中有空洞あるいは／かつ喀痰塗抹陽性の割合、2021年

Previous table Proportion of cavitory or/and sputum smear positive cases among newly notified pulmonary TB patients aged 30-59 years, 2021

	男 Male								女 Female							
	肺結核 Pulmonary TB	有空洞あるいは 喀痰塗抹陽性 Cavitory or sputum smear(+)			有空洞かつ 喀痰塗抹陽性 Cavitory and sputum smear(+)			肺結核 Pulmonary TB	有空洞あるいは 喀痰塗抹陽性 Cavitory or sputum smear(+)			有空洞かつ 喀痰塗抹陽性 Cavitory and sputum smear(+)				
		n	%	Ratio	n	%	Ratio		n	%	Ratio	n	%	Ratio		
接客業 Service workers	57	39	68.4	2.2	19	33.3	2.9	42	18	42.9	1.3	9	21.4	3.3		
医療職 Medical workers	35	11	31.4	1.0	4	11.4	1.0	125	42	33.6	1.0	8	6.4	1.0		
教員・保育士 Teachers/ Nursery nurses	9	4	44.4	1.4	2	22.2	1.9	18	7	38.9	1.2	2	11.1	1.7		
他の常用勤労者 Other regular workers	507	261	51.5	1.6	107	21.1	1.8	174	75	43.1	1.3	26	14.9	2.3		
他の臨時・日雇 Other temporary/ daily workers	46	28	60.9	1.9	22	47.8	4.2	45	23	51.1	1.5	12	26.7	4.2		
他の自営自由 Other self- employed	73	39	53.4	1.7	19	26.0	2.3	29	16	55.2	1.6	8	27.6	4.3		
無職 Jobless	160	104	65.0	2.1	61	38.1	3.3	99	57	57.6	1.7	25	25.3	3.9		
その他 Others	84	33	39.3	1.3	9	10.7	0.9	77	36	46.8	1.4	12	15.6	2.4		
総数 Total	971	519	53.5		243	25.0		609	274	45.0		102	16.7			

その他:家事、学生、不明 Others:Houskeepers/ Students/ Unknown

Ratio: 医療職の割合に対するその他職業の割合の比 The ratio of each proportion to that of medical workers

旧表 新登録肺結核患者の薬剤感受性検査結果、性・年齢別、2021年および2007～2021年

Previous table Drug susceptibility test results among newly notified pulmonary tuberculosis patients, by sex and age group, 2021 and 2007-2021

年齢 Age group	総数 Total										初回治療(再掲) New treatment (Re-count)									
	男 Male					女 Female					男 Male					女 Female				
	感受性結果把握	多剤耐性	INH耐性	RFP耐性	1剤以上耐性*	感受性結果把握	多剤耐性	INH耐性	RFP耐性	1剤以上耐性*	感受性結果把握	多剤耐性	INH耐性	RFP耐性	1剤以上耐性*	感受性結果把握	多剤耐性	INH耐性	RFP耐性	1剤以上耐性*
DST result obtained	MDR	Any INH resistance	Any RFP resistance	Any resistance	DST result obtained	MDR	Any INH resistance	Any RFP resistance	Any resistance	DST result obtained	MDR	Any INH resistance	Any RFP resistance	Any resistance	DST result obtained	MDR	Any INH resistance	Any RFP resistance	Any resistance	
2021年 2021 Calendar year																				
総数 Total	2,793	25	152	40	339	1,758	16	69	16	136	2,646	22	142	34	316	1,689	14	63	14	128
0-19	27	0	4	1	8	33	0	1	0	5	26	0	4	1	8	29	0	1	0	5
20-29	186	4	14	5	30	159	8	13	8	22	181	4	14	5	30	153	7	12	7	21
30-39	110	1	6	3	21	123	4	12	4	18	107	1	6	3	20	121	3	11	3	17
40-49	148	5	8	6	15	101	3	9	3	14	143	5	8	6	15	100	3	9	3	14
50-59	265	3	13	7	38	90	0	2	0	8	258	2	11	5	35	86	0	2	0	7
60-69	330	3	22	4	43	102	0	2	0	6	316	3	22	3	42	98	0	2	0	6
70-79	641	7	34	10	84	257	0	8	0	18	606	5	31	8	79	248	0	6	0	16
80+	1,086	2	51	4	100	893	1	22	1	45	1,009	2	46	3	87	854	1	20	1	42
2007～2021年 2007-2021 Calendar year																				
総数 Total	66,578	488	3,427	730	7,787	36,207	292	1,648	379	3,550	61,034	329	2,870	507	6,865	34,183	195	1,383	265	3,160
0-19	517	12	52	15	109	432	3	37	4	81	496	9	49	12	106	409	3	35	4	76
20-29	3,658	81	314	106	653	3,050	89	261	110	524	3,505	63	283	83	611	2,920	66	230	83	481
30-39	3,746	39	253	59	600	2,921	50	212	64	424	3,557	29	236	49	566	2,810	39	191	49	390
40-49	5,049	46	277	71	671	2,522	27	137	38	313	4,751	36	251	53	609	2,400	18	122	28	287
50-59	7,095	63	401	108	1,014	2,099	25	105	35	238	6,616	37	347	71	916	1,978	10	79	19	205
60-69	10,956	71	581	127	1,424	3,057	20	155	26	353	10,091	51	488	88	1,250	2,881	14	126	18	308
70-79	14,492	93	748	133	1,720	6,264	32	273	41	615	13,137	50	586	78	1,473	5,840	15	224	21	543
80+	21,065	83	801	111	1,596	15,862	46	468	61	1,002	18,881	54	630	73	1,334	14,945	30	376	43	870
2007～2021年 2007-2021 Calendar year																				
総数 Total	100%	0.7	5.1	1.1	11.7	100%	0.8	4.6	1.0	9.8	100%	0.5	4.7	0.8	11.2	100%	0.6	4.0	0.8	9.2
0-19	100	2.3	10.1	2.9	21.1	100	0.7	8.6	0.9	18.8	100	1.8	9.9	2.4	21.4	100	0.7	8.6	1.0	18.6
20-29	100	2.2	8.6	2.9	17.9	100	2.9	8.6	3.6	17.2	100	1.8	8.1	2.4	17.4	100	2.3	7.9	2.8	16.5
30-39	100	1.0	6.8	1.6	16.0	100	1.7	7.3	2.2	14.5	100	0.8	6.6	1.4	15.9	100	1.4	6.8	1.7	13.9
40-49	100	0.9	5.5	1.4	13.3	100	1.1	5.4	1.5	12.4	100	0.8	5.3	1.1	12.8	100	0.8	5.1	1.2	12.0
50-59	100	0.9	5.7	1.5	14.3	100	1.2	5.0	1.7	11.3	100	0.6	5.2	1.1	13.8	100	0.5	4.0	1.0	10.4
60-69	100	0.6	5.3	1.2	13.0	100	0.7	5.1	0.9	11.5	100	0.5	4.8	0.9	12.4	100	0.5	4.4	0.6	10.7
70-79	100	0.6	5.2	0.9	11.9	100	0.5	4.4	0.7	9.8	100	0.4	4.5	0.6	11.2	100	0.3	3.8	0.4	9.3
80+	100	0.4	3.8	0.5	7.6	100	0.3	3.0	0.4	6.3	100	0.3	3.3	0.4	7.1	100	0.2	2.5	0.3	5.8

DST: Drug susceptibility test. MDR: Multi-drug resistance, i.e., resistant to at least INH and RFP. INH: Isoniazid. RFP: Rifampicin.

\*: 2012年以降はINH, RFP, SM EBの4剤のうちのいずれかに耐性

旧表 新登録肺結核患者の薬剤感受性検査結果および耐性率、性・年齢別、2007～2021年（再掲；外国人）

Previous table Drug susceptibility test results among newly notified pulmonary tuberculosis patients, by sex and age group, 2007-2021 (Re-count of foreigners)

年齢 Age group	総数 Total										初回治療(再掲) New treatment (Re-count)									
	男 Male					女 Female					男 Male					女 Female				
	感受性結果 把握 DST result obtained	多剤耐性 MDR	INH耐性 Any resistance	RFP耐性 Any resistance	1剤以上耐性* Any resistance	感受性結果 把握 DST result obtained	多剤耐性 MDR	INH耐性 Any resistance	RFP耐性 Any resistance	1剤以上耐性* Any resistance	感受性結果 把握 DST result obtained	多剤耐性 MDR	INH耐性 Any resistance	RFP耐性 Any resistance	1剤以上耐性* Any resistance	感受性結果 把握 DST result obtained	多剤耐性 MDR	INH耐性 Any resistance	RFP耐性 Any resistance	1剤以上耐性* Any resistance
2007～2021年	2007-2021 Calendar year																			
総数 Total	3,002	114	358	141	582	2,975	132	367	157	574	2,862	81	313	106	529	2,837	102	325	122	518
0-19	170	11	36	13	54	116	2	14	3	19	164	8	33	10	51	112	2	13	3	18
20-29	1,622	72	204	90	327	1,397	77	181	93	298	1,560	55	179	70	299	1,345	59	158	72	269
30-39	521	20	56	25	95	714	30	101	33	142	496	15	51	20	87	683	23	92	25	131
40-49	230	5	18	7	35	369	10	36	12	58	216	1	13	2	28	346	7	33	8	52
50-59	156	2	9	2	15	173	6	20	8	31	149	0	7	0	13	158	5	15	7	24
60-69	138	4	23	4	38	83	3	9	4	12	128	4	21	4	36	80	3	9	4	12
70-79	83	0	7	0	9	50	4	6	4	9	74	0	5	0	7	44	3	5	3	7
80+	82	0	5	0	9	73	0	0	0	5	75	0	4	0	8	69	0	0	0	5
2007～2021年	2007-2021 Calendar year																			
総数 Total	100%	3.8	11.9	4.7	19.4	100%	4.4	12.3	5.3	19.3	100%	2.8	10.9	3.7	18.5	100%	3.6	11.5	4.3	18.3
0-19	100	6.5	21.2	7.6	31.8	100	1.7	12.1	2.6	16.4	100	4.9	20.1	6.1	31.1	100	1.8	11.6	2.7	16.1
20-29	100	4.4	12.6	5.5	20.2	100	5.5	13.0	6.7	21.3	100	3.5	11.5	4.5	19.2	100	4.4	11.7	5.4	20.0
30-39	100	3.8	10.7	4.8	18.2	100	4.2	14.1	4.6	19.9	100	3.0	10.3	4.0	17.5	100	3.4	13.5	3.7	19.2
40-49	100	2.2	7.8	3.0	15.2	100	2.7	9.8	3.3	15.7	100	0.5	6.0	0.9	13.0	100	2.0	9.5	2.3	15.0
50-59	100	1.3	5.8	1.3	9.6	100	3.5	11.6	4.6	17.9	100	0.0	4.7	0.0	8.7	100	3.2	9.5	4.4	15.2
60-69	100	2.9	16.7	2.9	27.5	100	3.6	10.8	4.8	14.5	100	3.1	16.4	3.1	28.1	100	3.8	11.3	5.0	15.0
70-79	100	0.0	8.4	0.0	10.8	100	8.0	12.0	8.0	18.0	100	0.0	6.8	0.0	9.5	100	6.8	11.4	6.8	15.9
80+	100	0.0	6.1	0.0	11.0	100	0.0	0.0	0.0	6.8	100	0.0	5.3	0.0	10.7	100	0.0	0.0	0.0	7.2

DST: Drug susceptibility test. MDR: Multi-drug resistance, i.e., resistant to at least INH and RFP. INH: Isoniazid. RFP: Rifampicin.

\*: 2012年はINH, RFP, SM EBの4剤のうちのいずれかに耐性