



Monthly Report of Tuberculosis Surveillance, Japan - Jun, 2023

The reporting and recording of tuberculosis (TB) and Latent TB Infection (LTBI) are managed at public health centers (PHCs) by the nationwide computerized TB surveillance system in Japan. A monthly report is compiled from the database automatically and regularly on 4th Friday of the next month, and an annual report is also produced much like the monthly report, but with sufficient time for data correction.

Tables and figures shown in the monthly reports are as follows.

Figures

Figure 1. Number of newly notified TB cases by month, Japan, 2020-2023

Figure 2. Newly notified TB cases by sex and age, Japan, summation (Jan. -Jun.) 2023

Figure 3. Notification rate of TB cases by sex and age, Japan, summation (Jan. -Jun.) 2023

Figure 4. Notification rate of TB by prefecture, Japan, summation (Jan. -Jun.) 2023

Figure 5. Notification rate of TB by major city, Japan, summation (Jan. -Jun.) 2023

Figure 6. Number of LTBI, Japan, 2020-2023

Figure 7. Number of LTBI by sex and age group, Japan, summation (Jan. -Jun.) 2023

Tables

Table 1. Newly notified TB cases and rates by sex and age, Japan, 2023

Table 2. Newly notified sputum smear positive pulmonary TB cases and rates by sex and age, Japan, 2023

Table 3. Newly notified TB cases and rates by prefecture, Japan, 2023

Table 4. Newly notified TB cases and rates by major city, Japan, 2023

Table 5. LTBI cases and rates by sex and age, Japan, 2023

Table 6. LTBI cases and rates by prefecture, Japan, 2023

Table 7. LTBI cases and rates by major city, Japan, 2023

Figure 1. Number of newly notified TB cases by month, Japan, 2020-2023

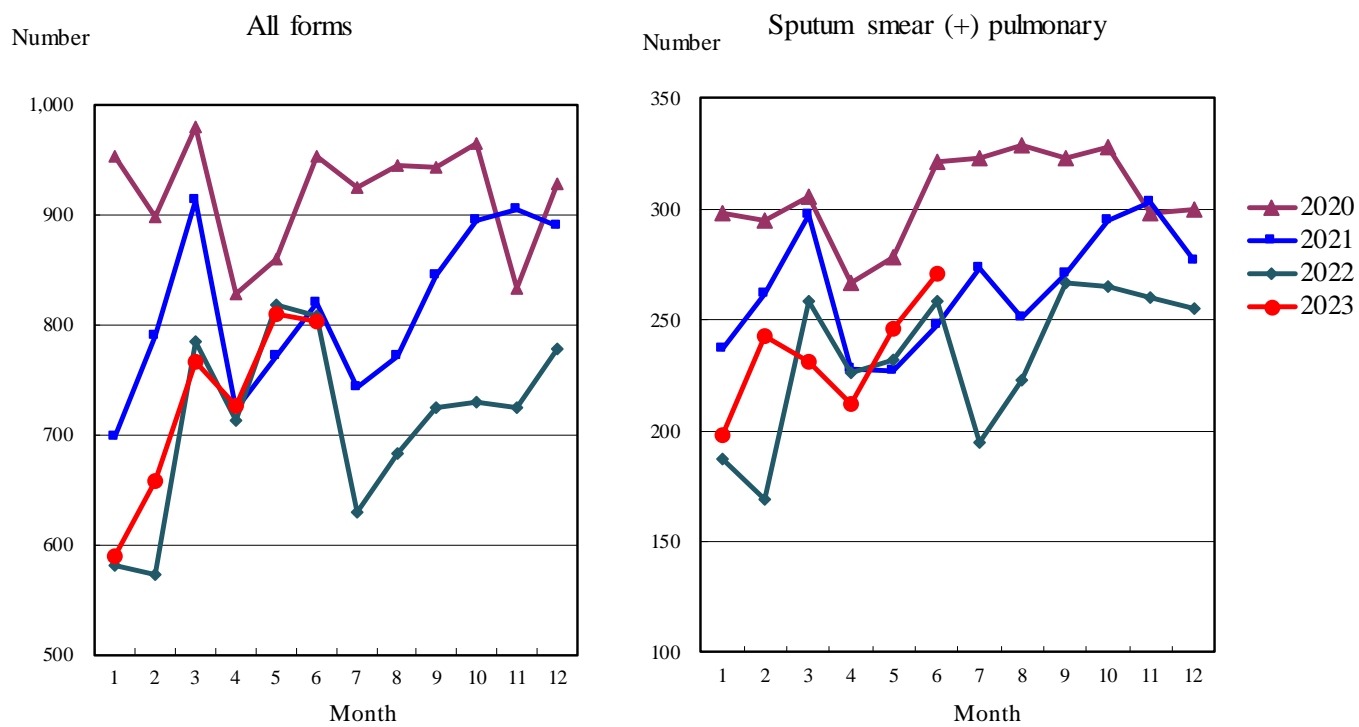


Figure 2. Newly notified TB patients by sex and age, Japan, summation (Jan.-Jun.) 2023

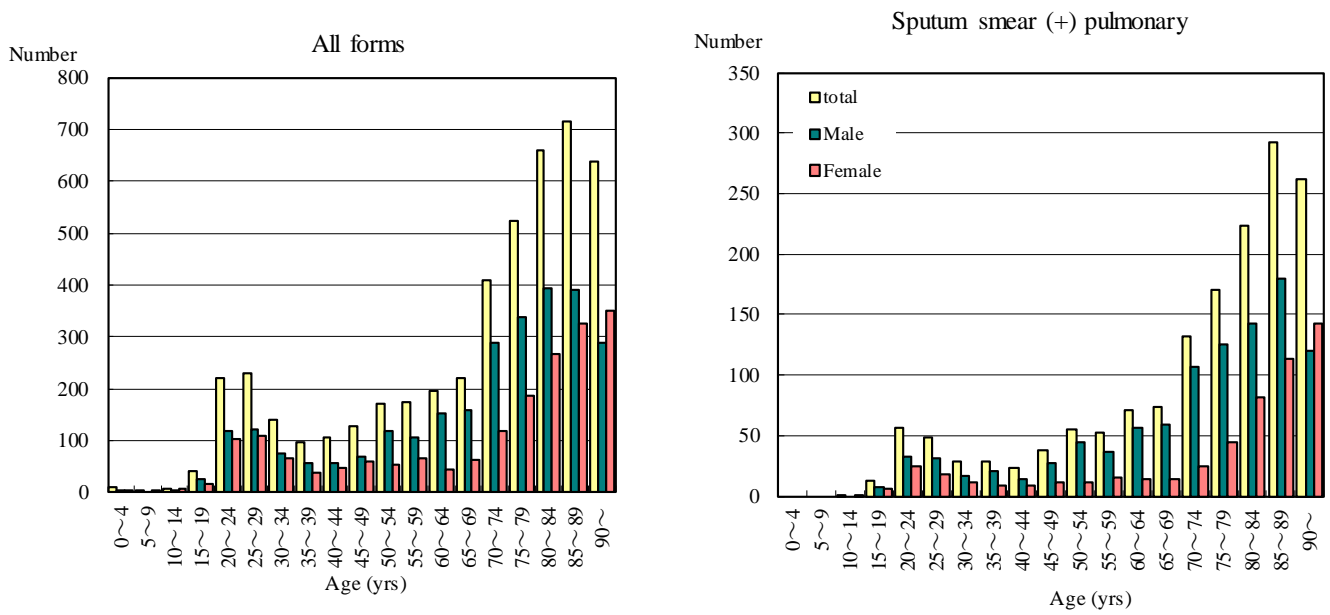


Figure 3. Notification rate of TB cases by sex and age, Japan, summation (Jan.-Jun.) 2023

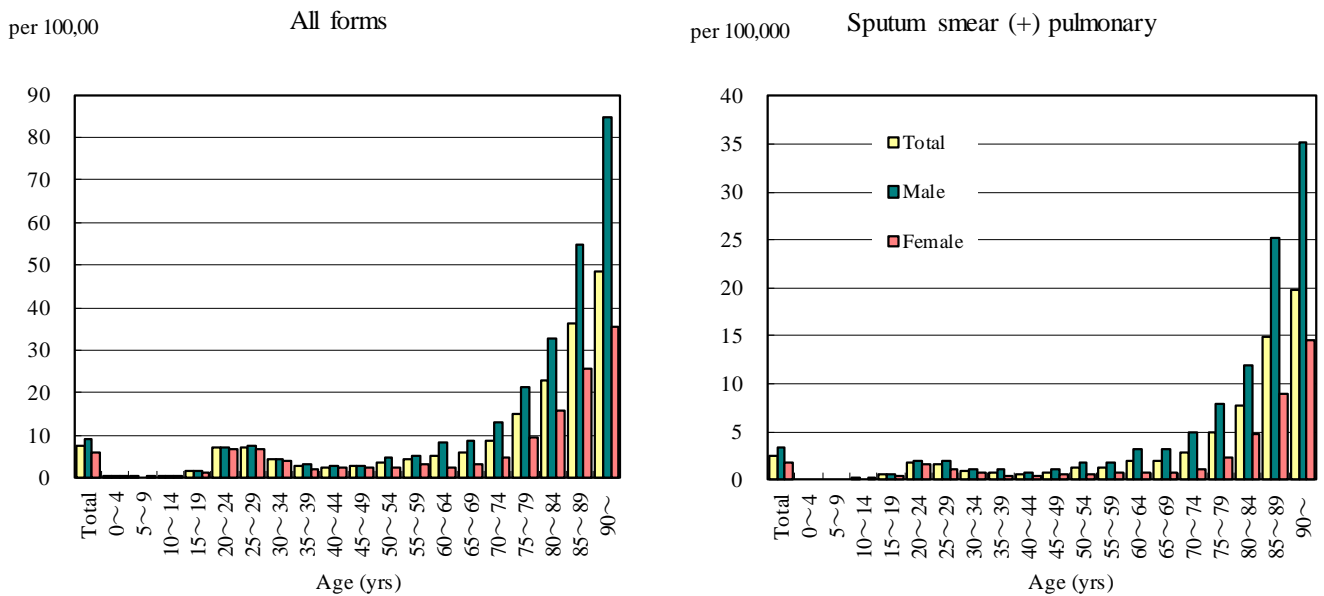


Figure 4. Notification rates of TB by prefecture, Japan, summation (Jan.-Jun.) 2023

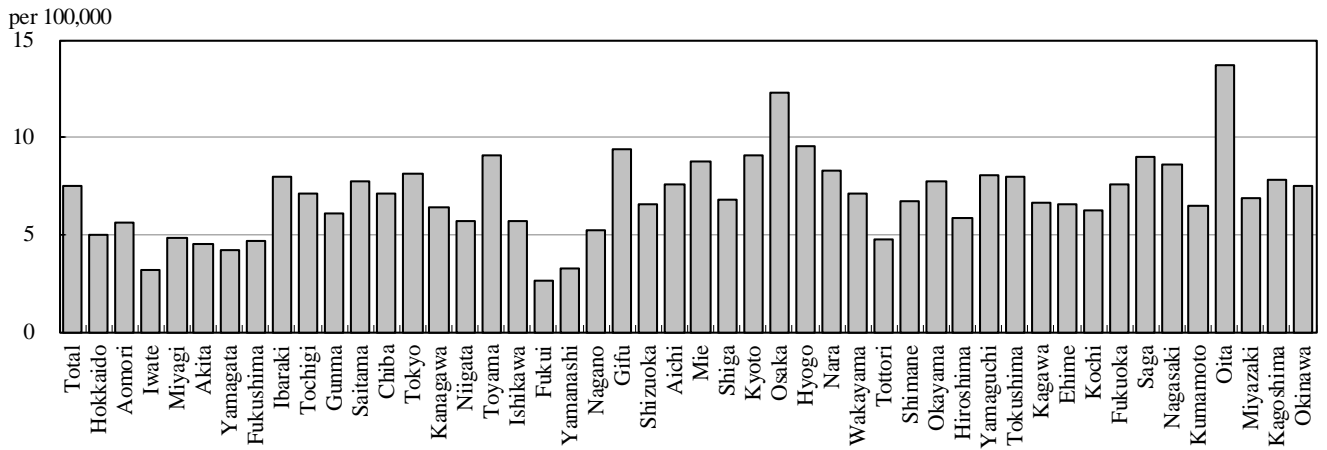


Figure 5. Notification rates of TB major city, Japan, summation (Jan.-Jun.) 2023

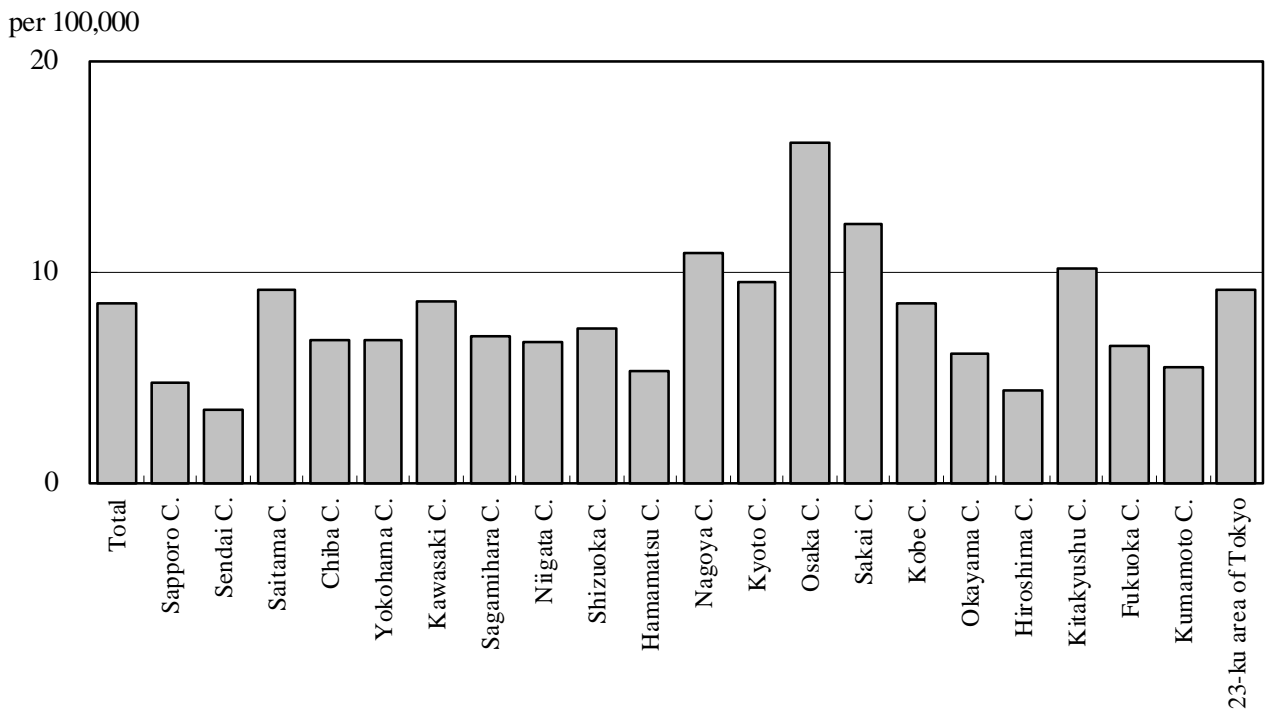


Figure 6. Number of LTBI, Japan, 2020-2023

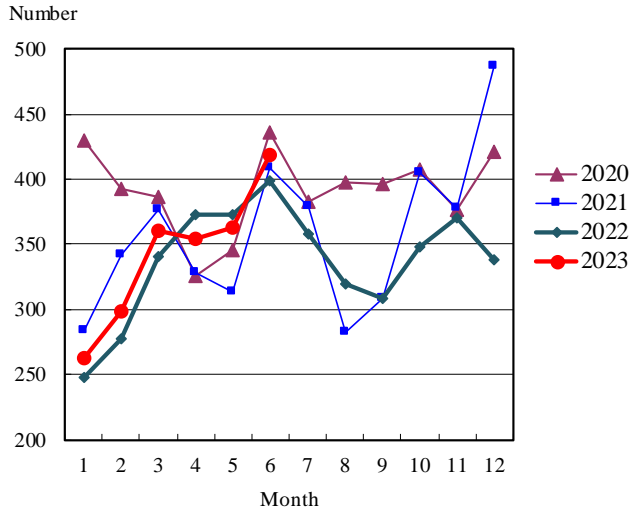


Figure 7. Number of LTBI by sex and age group, Japan, summation (Jan.-Jun.) 2023

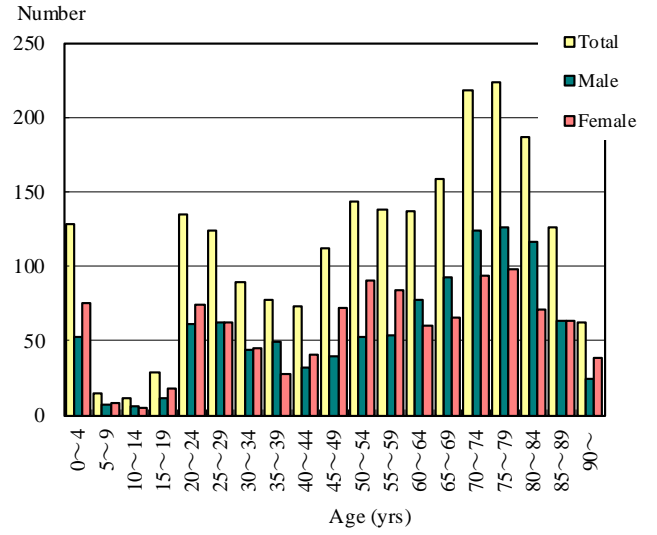


Table 1. Newly notified TB cases and rates by sex and age, Japan, 2023

	Jun.			Summation (Jan.-Jun.)			Notification rate (per 100,000)		
	Total	Male	Female	Total	Male	Female	Total	Male	Female
Total	802	489	313	4,692	2,767	1,925	7.5	9.1	6.0
0~4	2	2	0	9	5	4	0.4	0.5	0.4
5~9	1	0	1	2	0	2	0.1	0.0	0.2
10~14	0	0	0	7	1	6	0.3	0.1	0.5
15~19	10	9	1	42	26	16	1.5	1.8	1.2
20~24	41	26	15	220	117	103	7.0	7.3	6.8
25~29	32	17	15	231	122	109	7.2	7.4	7.0
30~34	28	14	14	140	74	66	4.3	4.5	4.2
35~39	15	8	7	97	58	39	2.7	3.2	2.2
40~44	14	9	5	106	58	48	2.7	2.9	2.5
45~49	23	10	13	129	70	59	2.7	2.9	2.5
50~54	30	20	10	171	117	54	3.6	4.9	2.3
55~59	40	24	16	174	107	67	4.3	5.3	3.3
60~64	29	27	2	195	151	44	5.2	8.2	2.3
65~69	37	27	10	221	159	62	5.9	8.7	3.2
70~74	75	56	19	409	290	119	8.8	13.2	4.8
75~79	76	50	26	525	338	187	14.9	21.5	9.6
80~84	121	81	40	660	394	266	23.0	32.9	15.9
85~89	118	60	58	716	391	325	36.2	54.7	25.7
90~	110	49	61	638	289	349	48.4	84.8	35.7

Temporary registrants = 37, Total of registrants and temporary registrants = 839

Rate: summation / (population*6/12)*100,000

Population: as of 1st Oct. 2022

Table 2. Newly notified sputum smear positive pulmonary TB cases and rates by sex and age, Japan, 2023

	Jun.			Summation (Jan.-Jun.)			Notification rate (per 100,000)		
	Total	Male	Female	Total	Male	Female	Total	Male	Female
Total	271	176	95	1,570	1,021	549	2.5	3.4	1.7
0~4	0	0	0	0	0	0	0.0	0.0	0.0
5~9	0	0	0	0	0	0	0.0	0.0	0.0
10~14	0	0	0	1	0	1	0.0	0.0	0.1
15~19	3	3	0	13	7	6	0.5	0.5	0.4
20~24	11	5	6	57	32	25	1.8	2.0	1.6
25~29	3	2	1	49	31	18	1.5	1.9	1.2
30~34	6	3	3	28	17	11	0.9	1.0	0.7
35~39	6	4	2	29	21	8	0.8	1.1	0.5
40~44	1	0	1	23	14	9	0.6	0.7	0.5
45~49	7	3	4	38	27	11	0.8	1.1	0.5
50~54	14	12	2	55	44	11	1.2	1.9	0.5
55~59	15	9	6	52	37	15	1.3	1.8	0.7
60~64	11	11	0	71	57	14	1.9	3.1	0.7
65~69	11	10	1	73	59	14	1.9	3.2	0.7
70~74	26	22	4	132	107	25	2.8	4.9	1.0
75~79	22	18	4	170	125	45	4.8	7.9	2.3
80~84	42	28	14	224	143	81	7.8	12.0	4.8
85~89	49	26	23	293	180	113	14.8	25.2	8.9
90~	44	20	24	262	120	142	19.9	35.2	14.5

Rate: summation / (population*6/12)*100,000

Population: as of 1st Oct. 2022

Table 3. Newly notified TB cases and rates by prefecture, Japan, 2023

	Jun.		Summation (Jan.-Jun.)		Notification rate (per 100,000)	
	Newly notified TB	Sputum smear (+)	Newly notified TB	Sputum smear (+)	Newly notified TB	Sputum smear (+)
Total	802	271	4,692	1,570	7.5	2.5
Hokkaido	23	11	129	50	5.0	1.9
Aomori	7	3	34	9	5.6	1.5
Iwate	3	1	19	7	3.2	1.2
Miyagi	12	8	55	19	4.8	1.7
Akita	6	2	21	5	4.5	1.1
Yamagata	5	3	22	6	4.2	1.2
Fukushima	9	3	42	12	4.7	1.3
Ibaraki	17	5	113	24	8.0	1.7
Tochigi	9	3	68	25	7.1	2.6
Gunma	11	2	58	10	6.1	1.0
Saitama	45	15	283	104	7.7	2.8
Chiba	40	14	222	70	7.1	2.2
Tokyo	98	36	568	219	8.1	3.1
Kanagawa	71	24	296	109	6.4	2.4
Niigata	17	3	61	15	5.7	1.4
Toyama	4	2	46	15	9.1	3.0
Ishikawa	7	1	32	7	5.7	1.3
Fukui	2	0	10	2	2.7	0.5
Yamanashi	3	0	13	2	3.2	0.5
Nagano	5	2	53	22	5.2	2.2
Gifu	15	8	91	42	9.4	4.3
Shizuoka	15	3	118	39	6.6	2.2
Aichi	58	17	283	83	7.6	2.2
Mie	15	5	76	24	8.7	2.8
Shiga	8	2	48	13	6.8	1.8
Kyoto	12	1	116	24	9.1	1.9
Osaka	67	26	539	193	12.3	4.4
Hyogo	53	15	257	91	9.5	3.4
Nara	8	5	54	26	8.3	4.0
Wakayama	5	2	32	13	7.1	2.9
Tottori	2	2	13	4	4.8	1.5
Shimane	5	2	22	8	6.7	2.4
Okayama	10	4	72	28	7.7	3.0
Hiroshima	6	2	81	24	5.9	1.7
Yamaguchi	7	1	53	17	8.1	2.6
Tokushima	4	2	28	8	8.0	2.3
Kagawa	2	0	31	11	6.6	2.4
Ehime	6	2	43	13	6.6	2.0
Kochi	4	1	21	6	6.2	1.8
Fukuoka	28	11	194	66	7.6	2.6
Saga	3	1	36	11	9.0	2.7
Nagasaki	12	0	55	11	8.6	1.7
Kumamoto	13	4	56	20	6.5	2.3
Oita	13	3	76	25	13.7	4.5
Miyazaki	11	3	36	7	6.8	1.3
Kagoshima	16	7	61	17	7.8	2.2
Okinawa	10	4	55	14	7.5	1.9

Rate: summation / (population*6/12)*100,000

Population: as of 1st Oct. 2022

Table 4. Newly notified TB cases and rates by major city, Japan, 2023

	Jun.		Summation (Jan.-Jun.)		Notification Rate (per 100,000)	
	Newly notified TB	Sputum Smear(+)	Newly notified TB	Sputum Smear(+)	Newly notified TB	Sputum Smear(+)
Total	260	86	1,593	555	8.5	3.0
Sapporo City	5	3	47	21	4.8	2.1
Sendai City	3	1	19	4	3.5	0.7
Saitama City	9	2	61	23	9.1	3.4
Chiba City	5	3	33	16	6.7	3.3
Yokohama City	36	13	128	47	6.8	2.5
Kawasaki City	13	4	66	23	8.6	3.0
Sagamihara City	4	2	25	11	6.9	3.0
Niigata City	7	2	26	7	6.7	1.8
Shizuoka City	2	0	25	8	7.3	2.3
Hamamatsu City	6	1	21	7	5.3	1.8
Nagoya City	24	6	126	41	10.8	3.5
Kyoto City	7	1	69	15	9.5	2.1
Osaka City	7	1	222	68	16.1	4.9
Sakai City	7	4	50	21	12.2	5.1
Kobe City	14	3	64	24	8.5	3.2
Okayama City	3	1	22	8	6.1	2.2
Hiroshima City	2	1	26	10	4.4	1.7
Kitakyushu City	11	6	47	13	10.2	2.8
Fukuoka City	9	2	53	17	6.5	2.1
Kumamoto City	6	2	20	7	5.4	1.9
23-ku area of Tokyo	80	28	443	164	9.1	3.4

Rate: summation / (population*6/12)*100,000

Population: as of 1st Oct. 2022

Major city: city with a population of one million or more.

Table 4 is a re-count of Table 3.

Table 5. LTBI cases and rates by sex and age, Japan, 2023

	Jun.			Summation (Jan.-Jun.)			(Ratio) LTBI/Newly notified cases		
	Total	Male	Female	Total	Male	Female	Total	Male	Female
Total	419	215	204	2,187	1,095	1,092	0.5	0.4	0.6
0~4	18	6	12	128	53	75	14.2	10.6	18.8
5~9	1	1	0	15	7	8	7.5	-	4.0
10~14	2	1	1	11	6	5	1.6	6.0	0.8
15~19	4	3	1	29	11	18	0.7	0.4	1.1
20~24	37	18	19	135	61	74	0.6	0.5	0.7
25~29	28	16	12	124	62	62	0.5	0.5	0.6
30~34	21	11	10	89	44	45	0.6	0.6	0.7
35~39	18	12	6	77	49	28	0.8	0.8	0.7
40~44	14	4	10	73	32	41	0.7	0.6	0.9
45~49	18	7	11	112	40	72	0.9	0.6	1.2
50~54	25	7	18	143	53	90	0.8	0.5	1.7
55~59	24	8	16	138	54	84	0.8	0.5	1.3
60~64	34	19	15	137	77	60	0.7	0.5	1.4
65~69	21	10	11	159	93	66	0.7	0.6	1.1
70~74	36	21	15	218	124	94	0.5	0.4	0.8
75~79	45	27	18	224	126	98	0.4	0.4	0.5
80~84	33	19	14	187	116	71	0.3	0.3	0.3
85~89	28	19	9	126	63	63	0.2	0.2	0.2
90~	12	6	6	62	24	38	0.1	0.1	0.1

LTBI: latent TB Infection

Number of LTBI is not included in the newly notified TB patients

Table 6. LTBI cases and rates by prefecture, Japan, 2023

	Jun.	Summation (Jan.-Jun.)	
	LTBI	LTBI	(Ratio) LTBI / new TB
Total	419	2,187	0.47
Hokkaido	17	84	0.65
Aomori	1	16	0.47
Iwate	1	16	0.84
Miyagi	8	39	0.71
Akita	0	8	0.38
Yamagata	1	4	0.18
Fukushima	4	10	0.24
Ibaraki	12	62	0.55
Tochigi	8	22	0.32
Gunma	2	12	0.21
Saitama	37	161	0.57
Chiba	24	120	0.54
Tokyo	58	290	0.51
Kanagawa	23	135	0.46
Niigata	5	21	0.34
Toyama	3	21	0.46
Ishikawa	1	12	0.38
Fukui	3	8	0.80
Yamanashi	0	5	0.38
Nagano	4	25	0.47
Gifu	4	32	0.35
Shizuoka	5	29	0.25
Aichi	24	152	0.54
Mie	4	16	0.21
Shiga	2	14	0.29
Kyoto	9	57	0.49
Osaka	43	246	0.46
Hyogo	16	85	0.33
Nara	10	35	0.65
Wakayama	0	17	0.53
Tottori	0	3	0.23
Shimane	3	7	0.32
Okayama	9	37	0.51
Hiroshima	14	68	0.84
Yamaguchi	4	25	0.47
Tokushima	0	8	0.29
Kagawa	6	19	0.61
Ehime	0	8	0.19
Kochi	0	2	0.10
Fukuoka	26	92	0.47
Saga	1	6	0.17
Nagasaki	3	18	0.33
Kumamoto	4	22	0.39
Oita	9	33	0.43
Miyazaki	2	16	0.44
Kagoshima	4	24	0.39
Okinawa	5	45	0.82

LTBI: Latent TB Infection

Number of LTBI is not included in the newly notified TB patients.

Table 7. LTBI cases and rates by major city, Japan, 2023

	Jun.	Summation (Jan.-Jun.)	
	LTBI	LTBI	(Ratio) LTBI / new TB
Total	133	780	0.49
Sapporo City	7	39	0.83
Sendai City	6	18	0.95
Saitama City	6	41	0.67
Chiba City	3	14	0.42
Yokohama City	6	47	0.37
Kawasaki City	9	30	0.45
Sagamihara City	3	11	0.44
Niigata City	1	8	0.31
Shizuoka City	0	2	0.08
Hamamatsu City	3	13	0.62
Nagoya City	9	73	0.58
Kyoto City	5	33	0.48
Osaka City	3	85	0.38
Sakai City	2	25	0.50
Kobe City	3	26	0.41
Okayama City	2	20	0.91
Hiroshima City	2	22	0.85
Kitakyushu City	9	21	0.45
Fukuoka City	4	20	0.38
Kumamoto City	0	6	0.30
23-ku area of Tokyo	50	226	0.51

LTBI: Latent TB Infection

Number of LTBI is not included in the newly notified TB patients,

Major city: city with a population of one million or more

Table 7 is a re-count of Table 6