

【Summary】

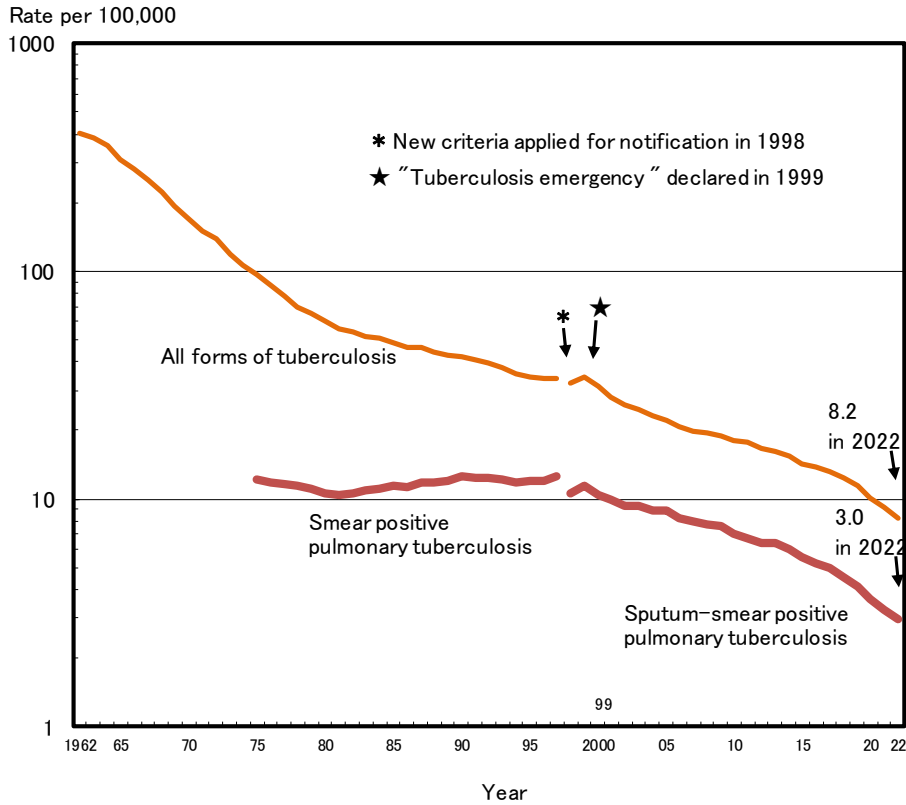


Fig. 1 Annual trend of tuberculosis notification rate (all forms, sputum-smear positive pulmonary tuberculosis) per 100,000 population in Japan, 1962–2022

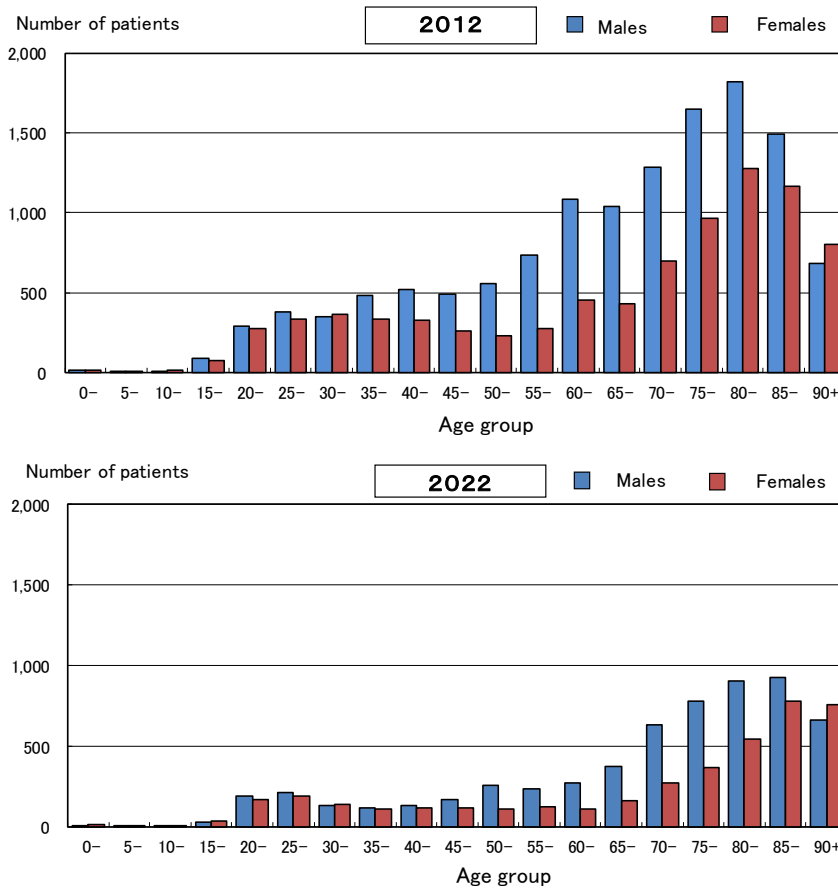


Fig. 2 Age distribution of newly notified tuberculosis patients by sex in Japan, in 2012 and in 2022

Table 1 Number of newly notified tuberculosis patients (all forms, new and re-treatment, pulmonary and extra-pulmonary), by age group, in Japan, 2013-2022

Age group	Tuberculosis notifications, all forms (*1)		Tuberculosis notification rates, all forms (*2)		New tuberculosis																																																																	
					Pulmonary tuberculosis																																																																	
					Sputum-smear negative														Bacteriological test results unknown																																																			
					Sputum-smear positive							Other bacteriologically positive							Other sputum-smear negative							Extra-pulmonary tuberculosis																																												
2013	2014	2015	2016	2017	2018	2019	2020	2021	2022	2013	2014	2015	2016	2017	2018	2019	2020	2021	2022	2013	2014	2015	2016	2017	2018	2019	2020	2021	2022	2013	2014	2015	2016	2017	2018	2019	2020	2021	2022	2013	2014	2015	2016	2017	2018	2019	2020	2021	2022																					
Total	20,495	19,615	18,280	17,625	16,789	15,590	14,460	12,739	11,519	10,235	16.1	15.4	14.4	13.9	13.3	12.3	11.5	10.1	9.2	8.2	7,584	7,153	6,676	6,281	6,031	5,485	4,966	4,413	3,962	3,562	5,174	4,937	4,819	4,777	4,645	4,417	4,193	4,434	3,110	2,712	2,041	1,918	1,638	1,709	1,588	1,474	1,323	1,118	942	827	160	173	139	106	87	82	71	57	57	51	4,274	4,255	3,976	3,844	3,599	3,400	3,241	3,171	2,988	2,699
0-14	66	49	51	59	51	38	52	29	35	0.4	0.3	0.3	0.4	0.4	0.3	0.2	0.3	0.2	0.2	0	1	2	2	4	4	0	2	2	2	14	11	12	12	8	7	6	7	6	8	26	18	17	20	24	27	18	23	8	17	1	4	2	5	5	4	1	4	1	3	20	13	16	18	13	9	13	9	11	5	
15-19	165	168	163	190	148	158	142	75	98	2.7	2.8	2.8	3.1	2.5	2.7	2.4	1.3	1.8	1.3	44	31	40	45	40	39	38	19	33	17	37	54	47	48	47	34	43	25	35	25	45	50	37	69	44	54	39	21	13	12	4	4	3	4	1	2	0	0	1	1	21	15	29	14	16	20	19	8	12	14	
20-29	1,196	1,188	1,127	1,235	1,231	1,273	1,164	1,027	930	9.1	9.2	9.0	9.8	9.8	10.1	9.2	8.1	7.4	6.1	345	321	277	269	279	278	285	249	197	192	346	356	378	420	423	444	414	336	320	268	302	277	271	320	294	311	232	172	179	137	15	18	12	19	13	10	8	7	4	6	144	164	151	160	180	185	190	220	198	151	
30-39	1,317	1,235	1,101	1,004	987	885	767	686	597	7.9	7.7	7.1	6.5	6.6	6.0	5.4	4.8	4.3	3.7	393	323	327	269	289	250	184	185	166	135	379	371	313	320	298	276	256	196	187	130	261	255	202	207	171	163	133	123	87	105	17	16	12	7	8	4	6	5	3	1	200	202	192	157	178	153	141	152	134	116	
40-49	1,496	1,440	1,363	1,228	1,159	1,034	985	741	640	8.3	7.8	7.5	6.5	6.1	5.5	5.3	4.0	3.6	3.1	495	453	426	363	348	307	287	221	170	157	418	416	396	360	373	396	301	206	186	152	227	229	188	198	169	157	149	111	90	84	16	20	20	12	8	5	10	5	11	6	266	234	243	228	186	202	182	170	144	118	
50-59	1,665	1,514	1,351	1,295	1,268	1,150	1,054	924	841	10.8	9.8	8.8	8.4	8.1	7.2	6.5	5.5	4.9	4.2	606	550	501	433	414	394	340	293	283	249	429	366	357	380	381	308	290	248	231	207	207	187	156	151	164	134	147	118	99	78	15	24	14	6	8	3	7	4	10	4	270	277	234	243	219	239	199	215	185	159	
60-69	2,833	2,597	2,359	2,213	2,024	1,704	1,472	1,262	1,070	15.4	14.3	13.1	12.0	11.4	10.0	9.1	8.0	7.0	6.1	1,045	936	858	792	756	638	494	462	365	302	716	656	616	566	536	455	431	335	300	280	283	253	241	205	203	171	159	131	100	73	29	23	20	26	14	9	12	8	9	5	556	547	476	498	408	322	289	258	249	206	
70-79	4,359	4,028	3,757	3,407	3,187	2,995	2,810	2,547	2,241	31.4	28.4	26.9	24.5	22.0	19.7	17.6	15.7	13.7	12.6	1,572	1,465	1,323	1,184	1,169	1,049	976	875	759	726	1,064	961	966	856	830	809	796	713	612	533	340	297	257	258	236	232	177	184	150	148	30	30	26	6	16	25	12	9	9	13	1,081	1,017	974	917	771	743	695	644	623	564	
80-89	5,856	5,793	5,317	5,138	4,822	4,534	4,061	3,686	3,140	76.2	72.5	66.0	60.8	55.5	51.2	45.4	40.3	36.5	32.6	2,426	2,389	2,194	2,095	1,904	1,798	1,513	1,391	1,313	1,197	1,392	1,309	1,289	1,321	1,267	1,229	1,084	896	812	763	290	290	216	228	217	179	199	181	163	137	32	30	23	19	10	15	14	15	7	12	1,354	1,401	1,280	1,219	1,192	1,147	1,082	1,053	1,010	952	
90+	1,542	1,443	1,491	1,356	1,304	1,206	1,067	1,739	1,633	95.6	95.7	92.0	96.3	92.7	82.8	85.2	72.7	64.6	54.0	668	684	728	828	828	768	839	716	676	585	379	437	445	494	482	549	562	472	421	346	60	62	53	53	66	46	69	54	53	36	1	4	7	2	4	5	1	0	2	0	362	385	381	390	436	380	431	442	422	414	

\*1: All forms include new and re-treatment tuberculosis patients.

\*2: Rate per 100,000 population

Age group	Sputum-smear positive		Other bacteriologically positive		Other sputum-smear negative		Re-treatment tuberculosis																																											
							Pulmonary tuberculosis																																											
							Sputum-smear negative														Bacteriological test results unknown																													
							Sputum-smear negative							Other bacteriologically positive							Other sputum-smear negative							Extra-pulmonary tuberculosis																						
2013	2014	2015	2016	2017	2018	2019	2020	2021	2022	2013	2014	2015	2016	2017	2018	2019	2020	2021	2022	2013	2014	2015	2016	2017	2018	2019	2020	2021	2022	2013	2014	2015	2016	2017	2018	2019	2020	2021	2022											
Total	535	498	455	361	328	296	265	202	165	141	296	296	264	249	223	188	189	147	113	114	163	157	119	115	99	85	80	69	58	45	19	17	13	10	10	6	8	6	6	2	249	211	181	173	179	157	125	122	118	82
0-14	0	0	0	1	0	0	1	0	0	1	0	0	0	1	0	0	1	0	0	3	1	1	1	0	0	1	0	0	0	0	0	1	0	2	0	0	0	0	0	1	1	0	0	1	0	0	5	0	0	
15-19	5	5	1	2	0	1	0	1	2	0	1	3	2	5	0	4	0	0	2	1	5	5	3	0	0	3	2	1	0	1	1	1	0	1	0	1	0	0	0	0	2	0	1	2	0	0	1	0	0	0
20-29	12	8	15	13	10	18	11	6	5	6	16	15	12	11	15	11	13	13	11	3	7	20	9	9	6	6	3	8	8	8	2	1	0	1	1	1	1	1	0	0	7	8	2	13	10	9	7	16	8	6
30-39	19	18	21	13	16	9	5	9	3	1	13	14	20	12	7	11	12	6	4	7	15	12	2	10	6	8	8	5	3	3	1	2	0	0	1	1	1	0	0	0	19	22	12	9	13	10	11	5	8	5
40-49	28	27	28	23	23	14	21	5	12	12	12	18	22	13	20	11	14	6	1	4	10	19	15	16	13	9	8	6	9	3	2	0	4	1	0	2	0	0	1	0	22	24	21	14	19	21	13	11	16	10
50-59	57	47	34	20	35	23	24	14	8	15	34	23	26	26	15	18	17	12	6	7	18	21	5	12	11	13	10	10	7	4	3	2	3	5	3	0	3	1	1	0	26	16	21	19	18	18	17	9	11	10
60-69	74	74	77	60	48	55	31	27	14	15	41	52	26	23	30	26	29	13	16	22	41	23	19	18	13	9	14	11	7	6	5	2	3	1	1	1	0	1	0	2	43	31	23	24	15	18	13	16	10	10
70-79	110	113	85	68	69	52	59	50	35	30	75	65	58	53	35	38	50	28	21	24	29	32	28	26	25	21	21	15	10	8	4	4	1	0	1	0	1	4	1	0	54	44	39	39	35	26	23	25	21	20
80-89	184	168	153	120	91	99	82	63	61	44	85	85	81	78	69	54	37	47	33	35	29	20	28	18	21	11	9	11	11	5	1	4	1	0	1	0	0	0	1	0	63	57	52	40	50	42	31	29	29	14
90+	46	38	41	41	36	25	32	26	25	18	18	21	17	28	31	15	17	22	18	11	6	4	9	5	3	5	5	1	1	7	0	0	0	1	0	0	2	0	2	0	12	8	10	13	18	13	9	6	15	7

Table 2 Newly notified latent tuberculosis infection (LTBI) patients, by sex and age group, in Japan, from 2020 to 2022

Age group	2020					202					2022				
	Total	Sex		Ratio of F/M	%	Total	Sex		Ratio of F/M	%	Total	Sex		Ratio of F/M	%
		Males	Females				Males	Females				Males	Females		
総数 Total	5,575	2,752	2,823	100.0	1.0	5,140	2,585	2,555	100.0	1.0	5,025	2,487	2,538	100.0	1.0
0-4	365	166	199	6.5	1.2	281	136	145	5.5	1.1	279	135	144	5.6	1.1
5-9	58	39	19	1.0	0.5	35	19	16	0.7	0.8	42	18	24	0.8	1.3
10-14	36	18	18	0.6	1.0	28	12	16	0.5	1.3	33	12	21	0.7	1.8
15-19	73	38	35	1.3	0.9	51	28	23	1.0	0.8	62	24	38	1.2	1.6
20-24	265	130	135	4.8	1.0	197	94	103	3.8	1.1	209	100	109	4.2	1.1
25-29	249	110	139	4.5	1.3	234	119	115	4.6	1.0	253	129	124	5.0	1.0
30-34	225	91	134	4.0	1.5	211	83	128	4.1	1.5	163	75	88	3.2	1.2
35-39	229	100	129	4.1	1.3	203	97	106	3.9	1.1	187	91	96	3.7	1.1
40-44	263	115	148	4.7	1.3	238	103	135	4.6	1.3	206	80	126	4.1	1.6
45-49	378	166	212	6.8	1.3	309	134	175	6.0	1.3	314	116	198	6.2	1.7
50-54	397	166	231	7.1	1.4	372	159	213	7.2	1.3	335	134	201	6.7	1.5
55-59	363	153	210	6.5	1.4	331	128	203	6.4	1.6	333	144	189	6.6	1.3
60-64	394	215	179	7.1	0.8	330	159	171	6.4	1.1	298	152	146	5.9	1.0
65-69	512	278	234	9.2	0.8	417	247	170	8.1	0.7	368	194	174	7.3	0.9
70+	1,768	967	801	31.7	0.8	1,903	1,067	836	37.0	0.8	1,943	1,083	860	38.7	0.8

Ratio of F/M: Ratio of female patients to male patients

#: proportion

Previous table Newly notified tuberculosis cases by registered month, 2022

Registered month	Active tuberculosis									LTBI* on treatment
	All active tuberculosis	Active pulmonary tuberculosis							Extra-pulmonary	
		Sputum smear positive					Other bacillary positive	Bacillary negative or bacillary results unknown		
		All active pulmonary tuberculosis	All sputum smear positive	New	Retreatment					
Total	10,235	7,454	3,703	3,562	141	2,826	925	2,781	5,025	
Jan.	771	544	285	271	14	192	67	227	346	
Feb.	703	498	239	231	8	204	55	205	335	
Mar.	953	674	329	317	12	256	89	279	416	
Apr.	882	639	308	295	13	239	92	243	455	
May	904	614	288	283	5	243	83	290	434	
Jun.	983	709	356	343	13	264	89	274	536	
Jul.	834	608	294	286	8	230	84	226	493	
Aug.	858	626	317	301	16	243	66	232	402	
Sep.	888	668	357	342	15	247	64	220	414	
Oct.	839	655	333	315	18	251	71	184	413	
Nov.	807	607	301	297	4	233	73	200	413	
Dec.	813	612	296	281	15	224	92	201	368	

\* LTBI: Latent Tuberculosis Infection. These are not included in the number of active tuberculosis.

Table 3.1 Newly notified tuberculosis patients by affected organ, sex and age group, in Japan, from 1998 to 2022

Sex, Age-group, in 2022	Tuberculosis notifications, all forms	Pulmonary tuberculosis		Extra-pulmonary tuberculosis																	
		Lungs	Bronchi	Pharynx / Larynx	Miliary	Pleurals	Empyema	Hilar + Mediastinal lymph node	Other lymph nodes	Meninges	Intestines	Vertebrae	Other joints / bones	Kidneys / Urinary tracts	Genitals	Skins	Eyes	Ears	Peritoneum	Pericardium	Other organs
Total	10,235	7,813 (76.3)	53 (0.5)	21 (0.2)	527 (5.1)	1,969 (19.2)	19 (0.2)	90 (0.9)	560 (5.5)	100 (1.0)	153 (1.5)	118 (1.2)	62 (0.6)	42 (0.4)	7 (0.1)	73 (0.7)	32 (0.3)	14 (0.1)	121 (1.2)	56 (0.5)	94 (0.9)
Male	6,058	4,727 (78.0)	23 (0.4)	5 (0.1)	208 (3.4)	1,361 (22.5)	14 (0.2)	38 (0.6)	192 (3.2)	60 (1.0)	70 (1.2)	67 (1.1)	31 (0.5)	26 (0.4)	6 (0.1)	31 (0.5)	15 (0.2)	5 (0.1)	67 (1.1)	38 (0.6)	45 (0.7)
Female	4,177	3,086 (73.9)	30 (0.7)	16 (0.4)	319 (7.6)	608 (14.6)	5 (0.1)	52 (1.2)	368 (8.8)	40 (1.0)	83 (2.0)	51 (1.2)	31 (0.7)	16 (0.4)	1 (0.0)	42 (1.0)	17 (0.4)	9 (0.2)	54 (1.3)	18 (0.4)	49 (1.2)
0-14	35	31 (88.6)	0 (0.0)	0 (0.0)	0 (0.0)	0 (0.0)	0 (0.0)	0 (0.0)	5 (14.3)	2 (5.7)	0 (0.0)	0 (0.0)	0 (0.0)	0 (0.0)	0 (0.0)	0 (0.0)	0 (0.0)	0 (0.0)	0 (0.0)	0 (0.0)	3 (8.6)
15-19	71	57 (80.3)	0 (0.0)	0 (0.0)	0 (0.0)	4 (5.6)	0 (0.0)	2 (2.8)	4 (5.6)	1 (1.4)	0 (0.0)	1 (1.4)	0 (0.0)	0 (0.0)	0 (0.0)	0 (0.0)	0 (0.0)	0 (0.0)	0 (0.0)	3 (4.2)	3 (4.2)
20-29	777	624 (80.3)	2 (0.3)	1 (0.1)	7 (0.9)	66 (8.5)	1 (0.1)	13 (1.7)	95 (12.2)	7 (0.9)	14 (1.8)	9 (1.2)	4 (0.5)	1 (0.1)	0 (0.0)	2 (0.3)	3 (0.4)	0 (0.0)	9 (1.2)	0 (0.0)	6 (0.8)
30-39	503	389 (77.3)	4 (0.8)	0 (0.0)	11 (2.2)	50 (9.9)	3 (0.6)	8 (1.6)	70 (13.9)	4 (0.8)	13 (2.6)	4 (0.8)	4 (0.8)	2 (0.4)	0 (0.0)	4 (0.8)	0 (0.0)	2 (0.4)	2 (0.4)	1 (0.2)	8 (1.6)
40-49	546	424 (77.7)	3 (0.5)	4 (0.7)	9 (1.6)	56 (10.3)	0 (0.0)	9 (1.6)	52 (9.5)	7 (1.3)	20 (3.7)	7 (1.3)	2 (0.4)	1 (0.2)	1 (0.2)	5 (0.9)	9 (1.6)	1 (0.2)	6 (1.1)	0 (0.0)	7 (1.3)
50-59	733	575 (78.4)	2 (0.3)	1 (0.1)	11 (1.5)	89 (12.1)	1 (0.1)	7 (1.0)	61 (8.3)	4 (0.5)	18 (2.5)	8 (1.1)	5 (0.7)	4 (0.5)	0 (0.0)	8 (1.1)	5 (0.7)	3 (0.4)	9 (1.2)	6 (0.8)	12 (1.6)
60-69	921	722 (78.4)	6 (0.7)	1 (0.1)	34 (3.7)	127 (13.8)	1 (0.1)	13 (1.4)	49 (5.3)	11 (1.2)	20 (2.2)	11 (1.2)	5 (0.5)	5 (0.5)	1 (0.1)	8 (0.9)	1 (0.1)	0 (0.0)	12 (1.3)	10 (1.1)	5 (0.5)
70-79	2,066	1,545 (74.8)	11 (0.5)	4 (0.2)	97 (4.7)	390 (18.9)	3 (0.1)	20 (1.0)	107 (5.2)	22 (1.1)	34 (1.6)	35 (1.7)	14 (0.7)	11 (0.5)	4 (0.2)	18 (0.9)	8 (0.4)	3 (0.1)	29 (1.4)	11 (0.5)	25 (1.2)
80-89	3,159	2,353 (74.5)	18 (0.6)	6 (0.2)	236 (7.5)	782 (24.8)	6 (0.2)	12 (0.4)	95 (3.0)	38 (1.2)	31 (1.0)	35 (1.1)	20 (0.6)	14 (0.4)	1 (0.0)	17 (0.5)	5 (0.2)	5 (0.2)	44 (1.4)	23 (0.7)	21 (0.7)
90+	1,424	1,093 (76.8)	7 (0.5)	4 (0.3)	122 (8.6)	405 (28.4)	4 (0.3)	1 (0.1)	25 (1.8)	6 (0.4)	3 (0.2)	8 (0.6)	8 (0.6)	4 (0.3)	0 (0.0)	11 (0.8)	1 (0.1)	0 (0.0)	10 (0.7)	2 (0.1)	4 (0.3)
Year	Total																				
1998	41,033	33,981 (82.8)	-	-	505 (1.2)	5,125 (12.5)	251 (0.6)	136 (0.3)	1,469 (3.6)	154 (0.4)	335 (0.8)	385 (0.9)	328 (0.8)	227 (0.6)	78 (0.2)	100 (0.2)	12 (0.0)	25 (0.1)	-	-	692 (1.7)
1999	43,818	36,190 (82.6)	-	-	603 (1.4)	5,586 (12.7)	221 (0.5)	143 (0.3)	1,538 (3.5)	163 (0.4)	345 (0.8)	334 (0.8)	300 (0.7)	179 (0.4)	96 (0.2)	94 (0.2)	13 (0.0)	28 (0.1)	-	-	684 (1.6)
2000	39,384	32,338 (82.1)	-	-	597 (1.5)	5,108 (13.0)	202 (0.5)	123 (0.3)	1,432 (3.6)	158 (0.4)	356 (0.9)	319 (0.8)	272 (0.7)	181 (0.5)	72 (0.2)	123 (0.3)	16 (0.0)	38 (0.1)	-	-	656 (1.7)
2001	35,489	28,868 (81.3)	-	-	642 (1.8)	4,840 (13.6)	162 (0.5)	102 (0.3)	1,368 (3.9)	177 (0.5)	275 (0.8)	276 (0.8)	274 (0.8)	172 (0.5)	72 (0.2)	104 (0.3)	11 (0.0)	25 (0.1)	-	-	619 (1.7)
2002	32,828	26,472 (80.6)	-	-	626 (1.9)	4,666 (14.2)	152 (0.5)	84 (0.3)	1,269 (3.9)	188 (0.6)	323 (1.0)	299 (0.9)	222 (0.7)	148 (0.5)	66 (0.2)	100 (0.3)	19 (0.1)	29 (0.1)	-	-	544 (1.7)
2003	31,638	25,478 (80.5)	-	-	639 (2.0)	4,539 (14.3)	142 (0.4)	83 (0.3)	1,341 (4.2)	149 (0.5)	276 (0.9)	268 (0.8)	223 (0.7)	144 (0.5)	47 (0.1)	87 (0.3)	15 (0.0)	28 (0.1)	-	-	570 (1.8)
2004	29,736	23,829 (80.1)	-	-	617 (2.1)	4,491 (15.1)	125 (0.4)	70 (0.2)	1,293 (4.3)	160 (0.5)	299 (1.0)	275 (0.9)	220 (0.7)	112 (0.4)	53 (0.2)	95 (0.3)	13 (0.0)	30 (0.1)	-	-	564 (1.9)
2005	28,319	22,655 (80.0)	-	-	585 (2.1)	4,338 (15.3)	115 (0.4)	88 (0.3)	1,151 (4.1)	180 (0.6)	296 (1.0)	233 (0.8)	201 (0.7)	130 (0.5)	37 (0.1)	98 (0.3)	11 (0.0)	33 (0.1)	-	-	536 (1.9)
2006	26,384	20,856 (79.0)	-	-	616 (2.3)	4,192 (15.9)	97 (0.4)	79 (0.3)	1,191 (4.5)	127 (0.5)	263 (1.0)	248 (0.9)	231 (0.9)	112 (0.4)	40 (0.2)	109 (0.4)	9 (0.0)	24 (0.1)	-	-	554 (2.1)
2007	25,311	20,264 (80.1)	108 (0.4)	31 (0.1)	602 (2.4)	4,134 (16.3)	75 (0.3)	57 (0.2)	1,186 (4.7)	153 (0.6)	328 (1.3)	232 (0.9)	190 (0.8)	108 (0.4)	34 (0.1)	92 (0.4)	19 (0.1)	18 (0.1)	92 (0.4)	61 (0.2)	281 (1.1)
2008	24,760	19,780 (79.9)	117 (0.5)	43 (0.2)	570 (2.3)	4,001 (16.2)	78 (0.3)	68 (0.3)	1,194 (4.8)	171 (0.7)	292 (1.2)	273 (1.1)	170 (0.7)	121 (0.5)	34 (0.1)	92 (0.4)	13 (0.1)	29 (0.1)	144 (0.6)	80 (0.3)	181 (0.7)
2009	24,170	19,278 (79.8)	121 (0.5)	36 (0.1)	604 (2.5)	3,940 (16.3)	63 (0.3)	73 (0.3)	1,221 (5.1)	162 (0.7)	321 (1.3)	241 (1.0)	182 (0.8)	100 (0.4)	23 (0.1)	121 (0.5)	26 (0.1)	22 (0.1)	168 (0.7)	88 (0.4)	179 (0.7)
2010	23,261	18,735 (80.5)	127 (0.5)	53 (0.2)	598 (2.6)	3,959 (17.0)	48 (0.2)	74 (0.3)	1,158 (5.0)	138 (0.6)	330 (1.4)	239 (1.0)	159 (0.7)	88 (0.4)	35 (0.2)	97 (0.4)	29 (0.1)	12 (0.1)	154 (0.7)	76 (0.3)	171 (0.7)
2011	22,681	17,969 (79.2)	129 (0.6)	57 (0.3)	695 (3.1)	3,929 (17.3)	52 (0.2)	70 (0.3)	1,199 (5.3)	156 (0.7)	317 (1.4)	250 (1.1)	145 (0.6)	83 (0.4)	22 (0.1)	89 (0.4)	27 (0.1)	21 (0.1)	173 (0.8)	89 (0.4)	187 (0.8)
2012	21,283	16,826 (79.1)	107 (0.5)	46 (0.2)	608 (2.9)	3,653 (17.2)	63 (0.3)	134 (0.6)	1,038 (4.9)	152 (0.7)	348 (1.6)	255 (1.2)	157 (0.7)	82 (0.4)	20 (0.1)	97 (0.5)	34 (0.2)	16 (0.1)	176 (0.8)	80 (0.4)	166 (0.8)
2014	19,615	15,586 (79.5)	100 (0.5)	37 (0.2)	642 (3.3)	3,421 (17.4)	41 (0.2)	137 (0.7)	978 (5.0)	184 (0.9)	281 (1.4)	212 (1.1)	132 (0.7)	68 (0.3)	15 (0.1)	101 (0.5)	30 (0.2)	15 (0.1)	207 (1.1)	67 (0.3)	153 (0.8)
2015	18,280	14,581 (79.8)	119 (0.7)	43 (0.2)	631 (3.5)	3,277 (17.9)	46 (0.3)	128 (0.7)	813 (4.4)	166 (0.9)	248 (1.4)	192 (1.1)	98 (0.5)	73 (0.4)	21 (0.1)	87 (0.5)	20 (0.1)	19 (0.1)	176 (1.0)	69 (0.4)	134 (0.7)
2016	17,625	14,014 (79.5)	119 (0.7)	44 (0.2)	633 (3.6)	3,141 (17.8)	30 (0.2)	121 (0.7)	835 (4.7)	164 (0.9)	264 (1.5)	194 (1.1)	101 (0.6)	83 (0.5)	19 (0.1)	80 (0.5)	25 (0.1)	15 (0.1)	184 (1.0)	81 (0.5)	149 (0.8)
2017	16,789	13,469 (80.2)	97 (0.6)	30 (0.2)	687 (4.1)	2,868 (17.1)	31 (0.2)	140 (0.8)	779 (4.6)	164 (1.0)	220 (1.3)	150 (0.9)	91 (0.5)	53 (0.3)	19 (0.1)	80 (0.5)	19 (0.1)	18 (0.1)	178 (1.1)	73 (0.4)	161 (1.0)
2018	15,590	12,505 (80.2)	84 (0.5)	31 (0.2)	616 (4.0)	2,640 (16.9)	27 (0.2)	107 (0.7)	761 (4.9)	150 (1.0)	228 (1.5)	155 (1.0)	97 (0.6)	67 (0.4)	16 (0.1)	79 (0.5)	21 (0.1)	10 (0.1)	148 (0.9)	65 (0.4)	129 (0.8)
2019	14,460	11,584 (80.1)	76 (0.5)	24 (0.2)	639 (4.4)	2,671 (18.5)	28 (0.2)	111 (0.8)	669 (4.6)	137 (0.9)	227 (1.6)	135 (0.9)	73 (0.5)	51 (0.4)	18 (0.1)	63 (0.4)	25 (0.2)	12 (0.1)	152 (1.1)	50 (0.3)	125 (0.9)
2020	12,739	9,906 (77.8)	93 (0.7)	32 (0.3)	653 (5.1)	2,356 (18.5)	30 (0.2)	132 (1.0)	704 (5.5)	129 (1.0)	197 (1.5)	122 (1.0)	89 (0.7)	57 (0.4)	23 (0.2)	61 (0.5)	30 (0.2)	12 (0.1)	151 (1.2)	48 (0.4)	120 (0.9)
2021	11,519	8,810 (76.5)	91 (0.8)	28 (0.2)	573 (5.0)	2,168 (18.8)	14 (0.1)	101 (0.9)	659 (5.7)	100 (0.9)	186 (1.6)	145 (1.3)	103 (0.9)	53 (0.5)	13 (0.1)	68 (0.6)	30 (0.3)	6 (0.1)	142 (1.2)	57 (0.5)	146 (1.3)
2022	10,235	7,813 (76.3)	53 (0.5)	21 (0.2)	527 (5.1)	1,969 (19.2)	19 (0.2)	90 (0.9)	560 (5.5)	100 (1.0)	153 (1.5)	118 (1.2)	62 (0.6)	42 (0.4)	7 (0.1)	73 (0.7)	32 (0.3)	14 (0.1)	121 (1.2)	56 (0.5)	94 (0.9)

Note1: Cases having multiple organs are counted independently.

Note2: Numbers in brackets indicate the proportion out of the total number of newly notified tuberculosis cases (all forms) for each sex and age group.

Table 3.2 Number and proportion of miliary tuberculosis by age group and sex, 2004–2022

	year	Age group total		0–9 yrs		10–19 yrs		20–29 yrs		30–39 yrs		40–49 yrs		50–59 yrs		60–69 yrs		70–79 yrs		80 yrs+	
		n	(%)	n	(%)	n	(%)	n	(%)	n	(%)	n	(%)	n	(%)	n	(%)	n	(%)	n	(%)
Total	2004	617	(2.1)	0	(0.0)	6	(1.8)	19	(0.8)	22	(0.8)	24	(1.0)	44	(1.1)	82	(1.8)	199	(2.9)	221	(3.6)
	2005	585	(2.1)	1	(1.3)	3	(0.9)	13	(0.6)	38	(1.4)	25	(1.1)	41	(1.1)	77	(1.8)	180	(2.8)	207	(3.2)
	2006	616	(2.3)	1	(1.9)	1	(0.4)	19	(0.9)	24	(1.0)	27	(1.3)	42	(1.3)	84	(2.2)	173	(2.8)	245	(3.9)
	2007	602	(2.4)	0	(0.0)	2	(0.9)	10	(0.5)	20	(0.9)	23	(1.2)	26	(0.9)	75	(2.0)	190	(3.4)	256	(4.0)
	2008	570	(2.3)	1	(1.4)	1	(0.5)	17	(0.9)	18	(0.8)	21	(1.1)	40	(1.4)	64	(1.7)	162	(2.9)	246	(3.7)
	2009	604	(2.5)	3	(6.4)	2	(0.9)	6	(0.4)	26	(1.2)	25	(1.4)	38	(1.5)	68	(1.9)	164	(3.2)	272	(3.9)
	2010	598	(2.6)	0	(0.0)	2	(0.7)	11	(0.7)	20	(1.0)	22	(1.2)	23	(1.1)	80	(2.2)	139	(2.8)	301	(4.4)
	2011	695	(3.1)	1	(1.9)	2	(1.1)	18	(1.3)	21	(1.2)	28	(1.5)	27	(1.3)	58	(1.8)	155	(3.2)	385	(5.3)
	2012	608	(2.9)	0	(0.0)	2	(1.1)	4	(0.3)	10	(0.7)	20	(1.3)	28	(1.6)	53	(1.8)	147	(3.2)	344	(4.8)
	2013	635	(3.1)	0	(0.0)	4	(2.1)	9	(0.8)	21	(1.6)	15	(1.0)	23	(1.4)	59	(2.1)	151	(3.5)	353	(4.8)
	2014	642	(3.3)	1	(3.1)	2	(1.1)	7	(0.6)	15	(1.2)	12	(0.8)	23	(1.5)	53	(2.0)	133	(3.3)	396	(5.4)
	2015	631	(3.5)	0	(0.0)	2	(1.1)	11	(1.0)	8	(0.7)	24	(1.8)	17	(1.3)	36	(1.5)	153	(4.1)	380	(5.4)
	2016	633	(3.6)	1	(2.7)	0	(0.0)	8	(0.6)	16	(1.6)	12	(1.0)	26	(2.0)	50	(2.3)	135	(4.0)	385	(5.5)
	2017	687	(4.1)	3	(7.3)	3	(1.8)	8	(0.6)	18	(1.8)	11	(0.9)	24	(1.9)	45	(2.2)	123	(3.9)	452	(6.7)
	2018	616	(4.0)	1	(3.3)	2	(1.1)	13	(1.0)	11	(1.2)	16	(1.5)	23	(2.0)	41	(2.4)	120	(4.0)	389	(6.1)
	2019	639	(4.4)	2	(7.4)	2	(1.3)	15	(1.3)	12	(1.6)	17	(1.7)	21	(2.0)	35	(2.4)	118	(4.2)	417	(6.9)
	2020	653	(5.1)	1	(2.8)	0	(0.0)	16	(1.6)	15	(2.2)	13	(1.8)	24	(2.6)	29	(2.3)	116	(4.6)	439	(8.1)
	2021	573	(5.0)	1	(5.3)	0	(0.0)	16	(1.7)	11	(1.8)	7	(1.1)	19	(2.3)	37	(3.5)	106	(4.7)	376	(7.4)
	2022	527	(5.1)	0	(0.0)	0	(0.0)	7	(0.9)	11	(2.2)	9	(1.6)	11	(1.5)	34	(3.7)	97	(4.7)	358	(7.8)
	Males	2004	282	(1.5)	0	(0.0)	2	(1.3)	10	(0.8)	15	(0.9)	21	(1.3)	32	(1.1)	49	(1.5)	78	(1.7)	75
2005		269	(1.5)	1	(2.2)	2	(1.2)	7	(0.6)	24	(1.5)	15	(1.0)	23	(0.8)	47	(1.5)	83	(2.0)	67	(1.8)
2006		309	(1.8)	0	(0.0)	1	(0.9)	12	(1.1)	17	(1.3)	23	(1.6)	34	(1.3)	55	(2.0)	78	(1.9)	89	(2.4)
2007		250	(1.5)	0	(0.0)	2	(1.8)	6	(0.6)	13	(1.0)	14	(1.1)	16	(0.7)	45	(1.7)	76	(2.0)	78	(2.0)
2008		241	(1.5)	0	(0.0)	1	(0.9)	13	(1.4)	12	(1.0)	17	(1.4)	26	(1.3)	39	(1.5)	65	(1.8)	68	(1.8)
2009		211	(1.4)	0	(0.0)	1	(1.0)	2	(0.2)	18	(1.6)	18	(1.5)	21	(1.2)	26	(1.0)	57	(1.7)	68	(1.7)
2010		232	(1.6)	0	(0.0)	2	(1.3)	7	(0.8)	11	(1.1)	19	(1.6)	14	(0.9)	40	(1.5)	54	(1.7)	85	(2.1)
2011		283	(2.0)	1	(4.2)	0	(0.0)	12	(1.6)	14	(1.6)	17	(1.5)	18	(1.2)	34	(1.5)	66	(2.1)	121	(2.9)
2012		243	(1.9)	0	(0.0)	1	(1.0)	4	(0.6)	7	(0.8)	17	(1.7)	22	(1.7)	33	(1.6)	46	(1.6)	113	(2.8)
2013		234	(1.9)	0	(0.0)	2	(2.0)	2	(0.3)	14	(2.0)	7	(0.8)	12	(1.0)	34	(1.7)	52	(1.8)	111	(2.7)
2014		249	(2.1)	0	(0.0)	1	(1.1)	3	(0.5)	7	(1.0)	7	(0.8)	9	(0.9)	41	(2.2)	66	(2.5)	115	(2.8)
2015		231	(2.1)	0	(0.0)	1	(1.1)	6	(1.0)	7	(1.2)	19	(2.3)	11	(1.2)	20	(1.2)	65	(2.6)	102	(2.7)
2016		246	(2.3)	1	(4.8)	0	(0.0)	5	(0.7)	11	(2.0)	7	(0.9)	14	(1.6)	26	(1.6)	60	(2.7)	122	(3.2)
2017		264	(2.6)	1	(3.8)	2	(1.9)	3	(0.4)	11	(2.1)	5	(0.7)	17	(1.9)	27	(1.9)	60	(2.8)	138	(3.7)
2018		258	(2.8)	0	(0.0)	2	(2.0)	9	(1.2)	9	(1.9)	11	(1.7)	18	(2.3)	26	(2.2)	56	(2.9)	127	(3.7)
2019		244	(2.9)	1	(8.3)	1	(1.2)	12	(1.7)	6	(1.4)	14	(2.4)	15	(2.1)	16	(1.6)	62	(3.3)	117	(3.7)
2020		256	(3.4)	1	(5.0)	0	(0.0)	7	(1.3)	12	(3.5)	9	(2.1)	16	(2.6)	17	(1.9)	52	(3.1)	142	(4.8)
2021		238	(3.5)	0	(0.0)	0	(0.0)	10	(2.0)	6	(2.1)	4	(1.1)	11	(2.0)	23	(3.0)	57	(3.8)	127	(4.7)
2022		208	(3.4)	0	(0.0)	0	(0.0)	4	(1.0)	7	(2.8)	6	(2.0)	8	(1.6)	19	(2.9)	46	(3.2)	118	(4.7)
Females		2004	335	(3.2)	0	(0.0)	4	(2.2)	9	(0.7)	7	(0.6)	3	(0.4)	12	(1.2)	33	(2.4)	121	(5.3)	146
	2005	316	(3.1)	0	(0.0)	1	(0.6)	6	(0.5)	14	(1.3)	10	(1.5)	18	(2.0)	30	(2.5)	97	(4.5)	140	(5.3)
	2006	307	(3.3)	1	(4.0)	0	(0.0)	7	(0.7)	7	(0.7)	4	(0.6)	8	(1.0)	29	(2.8)	95	(4.6)	156	(6.1)
	2007	352	(3.9)	0	(0.0)	0	(0.0)	4	(0.4)	7	(0.7)	9	(1.4)	10	(1.4)	30	(2.9)	114	(5.9)	178	(6.7)
	2008	329	(3.6)	1	(3.3)	0	(0.0)	4	(0.4)	6	(0.6)	4	(0.6)	14	(2.0)	25	(2.4)	97	(5.2)	178	(6.4)
	2009	393	(4.3)	3	(10.7)	1	(0.8)	4	(0.5)	8	(0.8)	7	(1.0)	17	(2.3)	42	(4.2)	107	(5.9)	204	(6.7)
	2010	366	(4.2)	0	(0.0)	0	(0.0)	4	(0.6)	9	(1.0)	3	(0.5)	9	(1.5)	40	(4.0)	85	(4.9)	216	(7.3)
	2011	412	(4.7)	0	(0.0)	2	(2.0)	6	(0.9)	7	(0.8)	11	(1.7)	9	(1.5)	24	(2.5)	89	(5.2)	264	(8.5)
	2012	365	(4.4)	0	(0.0)	1	(1.2)	0	(0.0)	3	(0.4)	3	(0.5)	6	(1.2)	20	(2.3)	101	(6.1)	231	(7.1)
	2013	401	(5.0)	0	(0.0)	2	(2.2)	7	(1.2)	7	(1.2)	8	(1.4)	11	(2.1)	25	(3.0)	99	(6.4)	242	(7.4)
	2014	393	(5.2)	1	(6.3)	1	(1.1)	4	(0.7)	8	(1.4)	5	(0.9)	14	(2.8)	12	(1.6)	67	(4.9)	281	(8.7)
	2015	400	(5.6)	0	(0.0)	1	(1.2)	5	(1.0)	1	(0.2)	5	(1.0)	6	(1.4)	16	(2.5)	88	(6.8)	278	(8.8)
	2016	387	(5.5)	0	(0.0)	0	(0.0)	3	(0.6)	5	(1.1)	5	(1.0)	12	(2.9)	24	(3.8)	75	(6.4)	263	(8.1)
	2017	423	(6.4)	2	(13.3)	1	(1.6)	5	(0.9)	7	(1.5)	6	(1.3)	7	(1.8)	18	(3.1)	63	(5.9)	314	(10.4)
	2018	358	(5.7)	1	(10.0)	0	(0.0)	4	(0.7)	2	(0.5)	5	(1.3)	5	(1.3)	15	(3.0)	64	(6.0)	262	(8.9)
	2019	395	(6.7)	1	(6.7)	1	(1.5)	3	(0.6)	6	(1.7)	3	(0.7)	6	(1.7)	19	(4.1)	56	(6.1)	300	(10.4)
	2020	397	(7.6)	0	(0.0)	0	(0.0)	9	(1.9)	3	(0.9)	4	(1.3)	8	(2.5)	12	(3.3)	64	(7.3)	297	(12.0)
	2021	335	(7.0)	1	(10.0)	0	(0.0)	6	(1.4)	5	(1.6)	3	(1.0)	8	(2.7)	14	(4.5)	49	(6.7)	249	(10.5)
	2022	319	(7.6)	0	(0.0)	0	(0.0)	3	(0.8)	4	(1.6)	3	(1.2)	3	(1.3)	15	(5.5)	51	(7.9)	240	(11.5)

Note1: Cases having multiple organs are counted independently.

Note2: % indicate proportion out of the total number of newly notified tuberculosis cases for each age group.

【Foreign born】

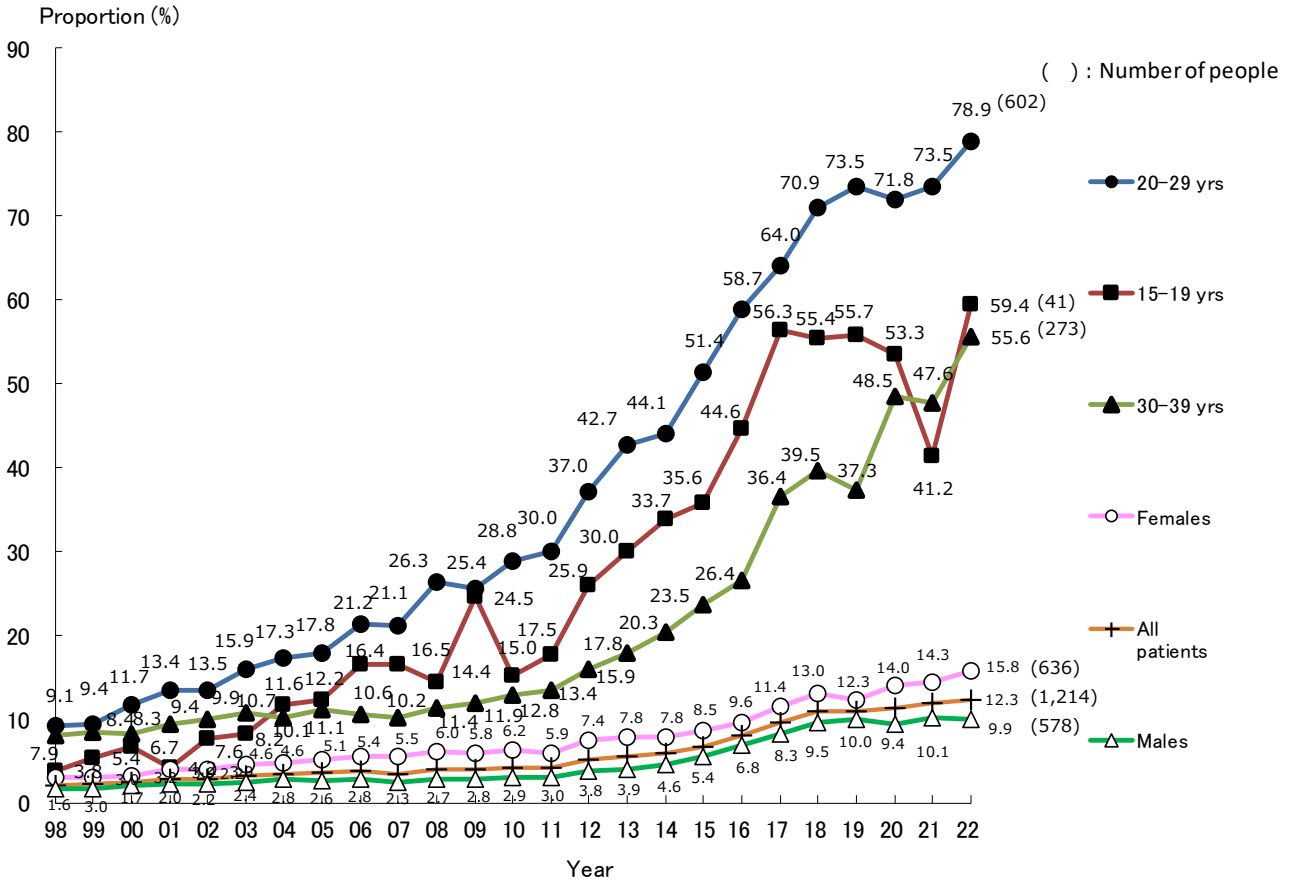


Fig. 3 Annual trend of proportion of foreign-borns among newly notified tuberculosis patients, by sex and age group, from 1998 to 2022

Those whose country of birth is unknown are excluded from the numerator.

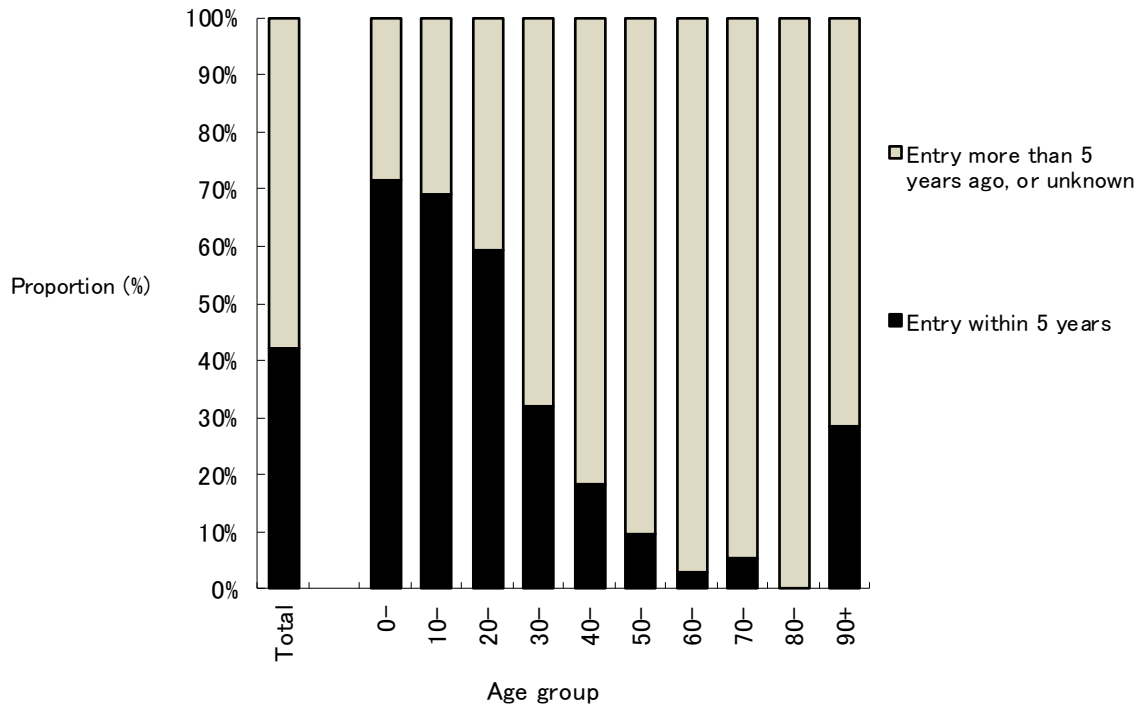


Fig. 4 Proportion of foreign-born tuberculosis patients, by age group and time of entry to Japan, in 2022

Table 4.1 Annual trend of newly notified tuberculosis patients by nationality or country of birth, and by sex, from 1998 to 2022

Year	Number of newly notified tuberculosis patients, all forms	Born in Japan	Foreign nationalities or Foreign borns (*1)	Nationalities or country of birth unknown	Proportion of foreign borns (%) (*2)	Sex (*3)		Ratio of Females to Males
						Males	Females	
1998	41,033	34,382	739	5,912	2.1	365	374	1.0
1999	43,818	37,094	821	5,903	2.2	415	406	1.0
2000	39,384	33,720	837	4,827	2.4	436	401	0.9
2001	35,489	30,305	866	4,318	2.8	442	424	1.0
2002	32,828	28,667	824	3,337	2.8	411	413	1.0
2003	31,638	27,665	906	3,067	3.2	433	473	1.1
2004	29,736	26,205	931	2,600	3.4	479	452	0.9
2005	28,319	25,247	923	2,149	3.5	438	485	1.1
2006	26,384	23,505	920	1,959	3.8	444	476	1.1
2007	25,311	23,451	842	1,018	3.5	364	478	1.3
2008	24,760	23,163	945	652	3.9	416	529	1.3
2009	24,170	22,808	938	424	4.0	414	524	1.3
2010	23,261	21,976	952	333	4.2	424	528	1.2
2011	22,681	21,372	921	388	4.1	416	505	1.2
2012	21,283	19,555	1,069	659	5.2	474	595	1.3
2013	20,495	18,589	1,064	842	5.4	468	596	1.3
2014	19,615	17,727	1,101	787	5.8	531	570	1.1
2015	18,280	16,396	1,164	720	6.6	581	583	1.0
2016	17,625	15,504	1,338	783	7.9	693	645	0.9
2017	16,789	14,533	1,530	726	9.5	804	726	0.9
2018	15,590	13,570	1,667	353	10.9	860	807	0.9
2019	14,460	12,567	1,541	352	10.9	829	712	0.9
2020	12,739	11,080	1,411	248	11.3	692	719	1.0
2021	11,519	9,809	1,313	397	11.8	655	658	1.0
2022	10,235	8,673	1,214	348	12.3	578	636	1.1

\*1: Number of tuberculosis patients with foreign nationalities until 2011, number of foreign-born patients afterwards.

\*2: Proportion of Tuberculosis patients with foreign nationalities until 2011, proportion of foreign-born patients afterwards, excluding those of unknown nationality or country of birth.

\*3: Sex distribution among foreign nationalities or foreign-borns.



Table 4.2 Annual trend of foreign-borns by age group, 1998–2022

year	Age group	0–9 yrs		10–19 yrs		20–29 yrs		30–39 yrs		40–49 yrs		50–59 yrs		60–69 yrs		70–79 yrs		80 yrs+	
		Total	n	(%)	n	(%)	n	(%)	n	(%)	n	(%)	n	(%)	n	(%)	n	(%)	n
1998	739	6	(0.8)	20	(2.7)	300	(40.6)	215	(29.1)	83	(11.2)	44	(6.0)	23	(3.1)	29	(3.9)	19	(2.6)
1999	821	11	(1.3)	27	(3.3)	319	(38.9)	241	(29.4)	89	(10.8)	54	(6.6)	27	(3.3)	35	(4.3)	18	(2.2)
2000	837	14	(1.7)	26	(3.1)	357	(42.7)	235	(28.1)	92	(11.0)	49	(5.9)	23	(2.7)	27	(3.2)	14	(1.7)
2001	866	4	(0.5)	17	(2.0)	361	(41.7)	249	(28.8)	110	(12.7)	55	(6.4)	27	(3.1)	25	(2.9)	18	(2.1)
2002	824	5	(0.6)	24	(2.9)	345	(41.9)	249	(30.2)	81	(9.8)	47	(5.7)	26	(3.2)	24	(2.9)	23	(2.8)
2003	906	9	(1.0)	25	(2.8)	399	(44.0)	268	(29.6)	98	(10.8)	38	(4.2)	22	(2.4)	27	(3.0)	20	(2.2)
2004	931	4	(0.4)	32	(3.4)	402	(43.2)	250	(26.9)	107	(11.5)	59	(6.3)	28	(3.0)	27	(2.9)	22	(2.4)
2005	923	5	(0.5)	37	(4.0)	378	(41.0)	273	(29.6)	105	(11.4)	62	(6.7)	26	(2.8)	16	(1.7)	21	(2.3)
2006	920	5	(0.5)	34	(3.7)	409	(44.5)	234	(25.4)	113	(12.3)	59	(6.4)	35	(3.8)	11	(1.2)	20	(2.2)
2007	842	6	(0.7)	35	(4.2)	390	(46.3)	224	(26.6)	102	(12.1)	43	(5.1)	15	(1.8)	12	(1.4)	15	(1.8)
2008	945	4	(0.4)	27	(2.9)	468	(49.5)	237	(25.1)	114	(12.1)	41	(4.3)	25	(2.6)	10	(1.1)	19	(2.0)
2009	938	2	(0.2)	50	(5.3)	427	(45.5)	243	(25.9)	103	(11.0)	41	(4.4)	30	(3.2)	20	(2.1)	22	(2.3)
2010	952	5	(0.5)	41	(4.3)	438	(46.0)	242	(25.4)	114	(12.0)	39	(4.1)	35	(3.7)	18	(1.9)	20	(2.1)
2011	921	5	(0.5)	30	(3.3)	419	(45.5)	226	(24.5)	126	(13.7)	53	(5.8)	20	(2.2)	19	(2.1)	23	(2.5)
2012	1,069	4	(0.4)	45	(4.2)	468	(43.8)	237	(22.2)	181	(16.9)	63	(5.9)	33	(3.1)	17	(1.6)	21	(2.0)
2013	1,064	3	(0.3)	52	(4.9)	494	(46.4)	225	(21.1)	147	(13.8)	65	(6.1)	30	(2.8)	25	(2.3)	23	(2.2)
2014	1,101	5	(0.5)	59	(5.4)	511	(46.4)	243	(22.1)	151	(13.7)	71	(6.4)	26	(2.4)	16	(1.5)	19	(1.7)
2015	1,164	3	(0.3)	63	(5.4)	565	(48.5)	252	(21.6)	134	(11.5)	74	(6.4)	27	(2.3)	19	(1.6)	27	(2.3)
2016	1,338	5	(0.4)	89	(6.7)	712	(53.2)	258	(19.3)	139	(10.4)	66	(4.9)	33	(2.5)	15	(1.1)	21	(1.6)
2017	1,530	5	(0.3)	87	(5.7)	774	(50.6)	349	(22.8)	143	(9.3)	89	(5.8)	48	(3.1)	17	(1.1)	18	(1.2)
2018	1,667	4	(0.2)	95	(5.7)	896	(53.7)	344	(20.6)	151	(9.1)	91	(5.5)	35	(2.1)	23	(1.4)	28	(1.7)
2019	1,541	7	(0.5)	81	(5.3)	851	(55.2)	283	(18.4)	147	(9.5)	76	(4.9)	41	(2.7)	27	(1.8)	28	(1.8)
2020	1,411	6	(0.4)	43	(3.0)	732	(51.9)	330	(23.4)	141	(10.0)	83	(5.9)	44	(3.1)	19	(1.3)	13	(0.9)
2021	1,313	3	(0.2)	43	(3.3)	675	(51.4)	276	(21.0)	135	(10.3)	94	(7.2)	43	(3.3)	16	(1.2)	28	(2.1)
2022	1,214	7	(0.6)	42	(3.5)	602	(49.6)	273	(22.5)	125	(10.3)	84	(6.9)	33	(2.7)	19	(1.6)	29	(2.4)

Note1: % indicate proportion out of the total number of newly notified foreign-born tuberculosis cases for each age group.

Note2: “ Foreign nationalities” until 2011, “ Foreign-born” since 2012.

Table 5 Number and proportion of foreign-born tuberculosis patients by country of birth and time of entry to Japan, 2022

Total	Drug resistance									Entry within 5 years	Drug resistance										
	n (%)		MDR	Any INH resistance	Any RFP resistance	Any resistance*	n (%)		MDR		Any INH resistance	Any RFP resistance	Any resistance*								
Total	1,214	(100.0)	16	(100.0)	56	(100.0)	22	(100.0)	91	(100.0)	Total	513	(100.0)	9	(100.0)	25	(100.0)	11	(100.0)	43	(100.0)
Philippines	252	(20.8)	1	(6.3)	12	(21.4)	2	(9.1)	14	(15.4)	Vietnam	111	(21.6)			5	(20.0)	1	(9.1)	11	(25.6)
Vietnam	188	(15.5)			8	(14.3)	1	(4.5)	17	(18.7)	Indonesia	108	(21.1)	1	(11.1)	4	(16.0)	1	(9.1)	5	(11.6)
Indonesia	177	(14.6)	1	(6.3)	6	(10.7)	1	(4.5)	7	(7.7)	Nepal	74	(14.4)	1	(11.1)	3	(12.0)	1	(9.1)	4	(9.3)
Nepal	138	(11.4)	2	(12.5)	4	(7.1)	2	(9.1)	6	(6.6)	Philippines	65	(12.7)	1	(11.1)	3	(12.0)	2	(18.2)	4	(9.3)
China	134	(11.0)	7	(43.8)	13	(23.2)	10	(45.5)	25	(27.5)	Myanmar	49	(9.6)	1	(11.1)	3	(12.0)	1	(9.1)	5	(11.6)
Myanmar	99	(8.2)	3	(18.8)	6	(10.7)	4	(18.2)	9	(9.9)	China	44	(8.6)	4	(44.4)	5	(20.0)	4	(36.4)	10	(23.3)
Republic of Korea	25	(2.1)	1	(6.3)	4	(7.1)	1	(4.5)	5	(5.5)	Mongolia	12	(2.3)			1	(4.0)			1	(2.3)
India	23	(1.9)																			
Thailand	23	(1.9)	1	(6.3)	1	(1.8)	1	(4.5)	1	(1.1)											
Mongolia	17	(1.4)			1	(1.8)			1	(1.1)											
Peru	13	(1.1)							1	(1.1)											
Brazil	10	(0.8)			1	(1.8)			1	(1.1)											
Cambodia	10	(0.8)							1	(1.1)											
Others	49	(4.0)							2	(2.2)	Others	41	(8.0)	1	(11.1)	1	(4.0)	1	(9.1)	3	(7.0)
Unknown	56	(4.6)							1	(1.1)	Unknown	9	(1.8)								

Only those countries with more than ten tuberculosis cases are listed.

MDR : Multi-drug resistant, i.e., resistant to at least INH and RFP INH: isoniazid RFP: rifampicin

\*: resistant to either INH, RFP, SM, or EB

Entry more than 5 years ago, or unknown	Drug resistance											
	n (%)		MDR	Any INH resistance	Any RFP resistance	Any resistance*	n (%)		MDR	Any INH resistance	Any RFP resistance	Any resistance*
Total	701	(100.0)	7	(100.0)	31	(100.0)	11	(100.0)	48	(100.0)		
Philippines	187	(26.7)			9	(29.0)			10	(20.8)		
China	90	(12.8)	3	(42.9)	8	(25.8)	6	(54.5)	15	(31.3)		
Vietnam	77	(11.0)			3	(9.7)			6	(12.5)		
Indonesia	69	(9.8)			2	(6.5)			2	(4.2)		
Nepal	64	(9.1)	1	(14.3)	1	(3.2)	1	(9.1)	2	(4.2)		
Myanmar	50	(7.1)	2	(28.6)	3	(9.7)	3	(27.3)	4	(8.3)		
Republic of Korea	23	(3.3)	1	(14.3)	4	(12.9)	1	(9.1)	5	(10.4)		
India	16	(2.3)										
Thailand	15	(2.1)										
Peru	11	(1.6)							1	(2.1)		
Others	52	(7.4)			1	(3.2)			2	(4.2)		
Unknown	47	(6.7)							1	(2.1)		

Table 6 Occupation of foreign-born tuberculosis patients by sex and age group, in Japan, in 2022

Age group	Total	Service trade workers	Health care workers	Teachers / Nursery staff	Infants / Children	Students	Other regular employees	Other temporar y/day laborer	Other self- employed	Houseke epers	Unemplo -yed / Others	Unknown
	(%)	(%)	(%)	(%)	(%)	(%)	(%)	(%)	(%)	(%)	(%)	(%)
総数 Total	1,214 (100)	46 (4)	66 (5)	9 (1)	8 (1)	202 (17)	430 (35)	102 (8)	18 (1)	14 (1)	273 (22)	46 (4)
男 Males	578 (100)	18 (3)	16 (3)	1 (0)	1 (0)	102 (18)	258 (45)	40 (7)	7 (1)	1 (0)	119 (21)	15 (3)
女 Females	636 (100)	28 (4)	50 (8)	8 (1)	7 (1)	100 (16)	172 (27)	62 (10)	11 (2)	13 (2)	154 (24)	31 (5)
0-14	8 (100)	0 -	0 -	0 -	8 (100)	0 -	0 -	0 -	0 -	0 -	0 -	0 -
15-19	41 (100)	0 -	0 -	0 -	0 (0)	28 (68)	6 -	0 -	1 (2)	0 -	6 (15)	0 -
20-24	303 (100)	7 (2)	13 (4)	0 -	0 (0)	110 (36)	94 (31)	21 (7)	2 (1)	0 -	50 (17)	6 (2)
25-29	299 (100)	8 (3)	29 (10)	2 (1)	0 (0)	48 (16)	123 (41)	23 (8)	2 (1)	1 -	55 (18)	8 (3)
30-34	170 (100)	6 (4)	9 (5)	3 (2)	0 (0)	13 (8)	79 (46)	18 (11)	2 (1)	2 (1)	28 (16)	10 (6)
35-39	103 (100)	8 (8)	5 (5)	0 -	0 (0)	2 (2)	42 (41)	8 (8)	4 (4)	6 (6)	23 (22)	5 (5)
40-44	68 (100)	5 (7)	4 (6)	0 -	0 (0)	0 (0)	33 (49)	10 (15)	2 (3)	0 -	9 (13)	5 (7)
45-49	57 (100)	6 (11)	0 -	2 (4)	0 (0)	0 (0)	21 (37)	8 (14)	1 (2)	0 -	13 (23)	6 (11)
50-54	43 (100)	3 (7)	4 (9)	0 -	0 (0)	1 (2)	10 (23)	5 (12)	1 (2)	1 (2)	15 (35)	3 (7)
55-59	41 (100)	0 -	1 (2)	1 (2)	0 (0)	0 (0)	13 (32)	5 (12)	1 (2)	4 (10)	15 (37)	1 (2)
60+	81 (100)	3 (4)	1 (1)	1 (1)	0 (0)	0 (0)	9 (11)	4 (5)	2 (2)	0 -	59 (73)	2 (2)

Previous table Trend of newly notified foreign nationals with TB by year and age group, 1998–2022

Year	All foreigners	Age group							Percentage of 20–29 yrs in total
		0–14	15–19	20–29	30–39	40–49	50–59	60+	
1998	739	11	15	300	215	83	44	71	40.6
1999	821	13	25	319	241	89	54	80	38.9
2000	837	16	24	357	235	92	49	64	42.7
2001	866	6	15	361	249	110	55	70	41.7
2002	824	6	23	345	249	81	47	73	41.9
2003	906	12	22	399	268	98	38	69	44.0
2004	931	6	30	402	250	107	59	77	43.2
2005	923	9	33	378	273	105	62	63	41.0
2006	920	6	33	409	234	113	59	66	44.5
2007	842	9	32	390	224	102	43	42	46.3
2008	945	5	26	468	237	114	41	54	49.5
2009	938	3	49	427	243	103	41	72	45.5
2010	952	9	37	438	242	114	39	73	46.0
2011	921	8	27	419	226	126	53	62	45.5
2012	1,069	7	42	468	237	181	63	71	43.8
2013	1,064	7	48	494	225	147	65	78	46.4
2014	1,101	8	56	511	243	151	71	61	46.4
2015	1,164	9	57	565	252	134	74	73	48.5
2016	1,338	12	82	712	258	139	66	69	53.2
2017	1,530	11	81	774	349	143	89	83	50.6
2018	1,667	12	87	896	344	151	91	86	53.7
2019	1,541	10	78	851	283	147	76	96	55.2
2020	1,411	9	40	732	330	141	83	76	51.9
2021	1,313	6	40	675	276	135	94	87	51.4
2022	1,214	8	41	602	273	125	84	81	49.6

Number of tuberculosis patients with foreign nationalities until 2011, number of foreign-born patients afterwards.

Previous table Distribution of foreign nationals with tuberculosis by prefecture and designated city, 2022

	Newly notified patients	Foreign born	Proportion (%)
Japan	10,235	1,214	11.9
Gunma	112	34	30.4
Fukuoka city	143	37	25.9
Hamamatsu city	60	14	23.3
Aichi	441	101	22.9
Kagawa	80	18	22.5
Tochigi	112	24	21.4
Sizuoka	127	27	21.3
Hiroshima	104	22	21.2
Yamanashi	51	10	19.6
Gifu	196	35	17.9
Mie	139	22	15.8
Ibaraki	248	39	15.7
Okayama city	45	7	15.6
Chiba	399	60	15.0
Fukushima	82	12	14.6
Okinawa	124	17	13.7
Osaka city	480	65	13.5
Tokyo	1193	158	13.2
Nagoya city	283	37	13.1
Shizuoka city	54	7	13.0
Shiga	116	15	12.9
Toyama	65	8	12.3
Kanagawa	238	29	12.2
Saitama	461	55	11.9
Iwate	60	7	11.7
Chiba city	95	11	11.6
Yamaguchi	116	13	11.2
Kawasaki city	127	14	11.0
Saitama city	96	10	10.4
Sagamihara city	48	5	10.4
Saga	59	6	10.2
Ishikawa	79	8	10.1
Yokohama city	288	29	10.1
Fukuoka	191	19	9.9
Hiroshima city	91	9	9.9
Kitakyushu city	103	10	9.7
Kyoto city	144	13	9.0
Kumamoto	91	8	8.8
Okayama	103	9	8.7
Yamagata	48	4	8.3
Kobe city	148	12	8.1
Sendai city	65	5	7.7
Oita	119	9	7.6
Kagosima	133	10	7.5
Hyougo	382	28	7.3
Kumamoto city	55	4	7.3
Ehime	98	7	7.1
Niigata city	43	3	7.0
Aomori	90	6	6.7
Nagano	105	7	6.7
Miyagi	62	4	6.5

Those prefectures and designated cities with 6% or more tuberculosis cases with foreign nationals are listed.

The figures of prefectures do not include those cases registered to designated cities in the respective prefecture, if applicable.

E.g., the figure of Kanagawa prefecture does not include those of Yokohama and Kawasaki cities.