

【概況】

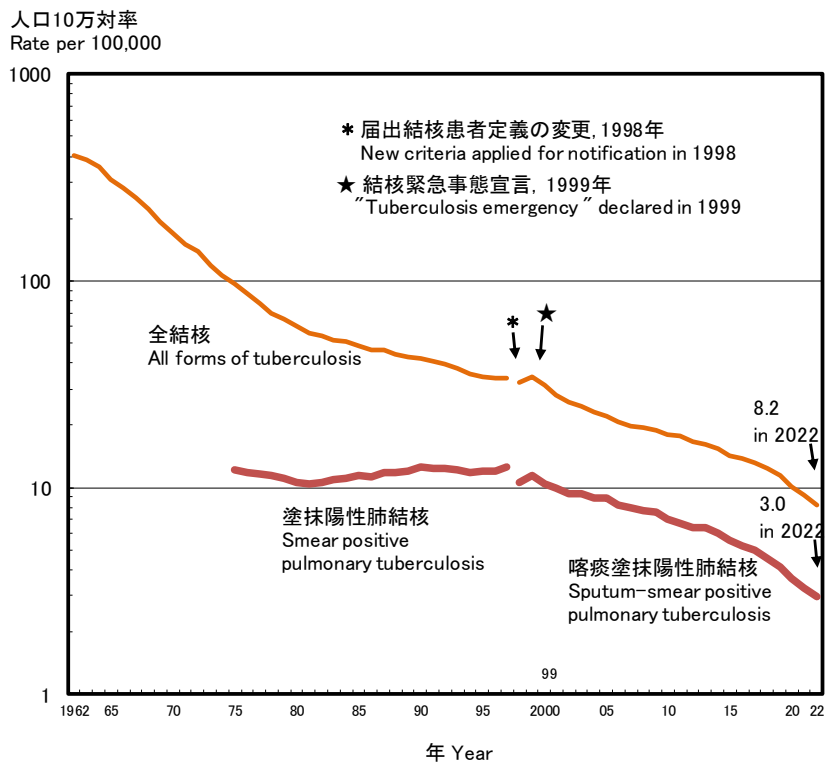


図1 人口10万対年間新結核患者登録数(登録率)の年次推移, 1962~2022年
Fig. 1 Annual trend of tuberculosis notification rate (all forms, sputum-smear positive pulmonary tuberculosis) per 100,000 population in Japan, 1962-2022

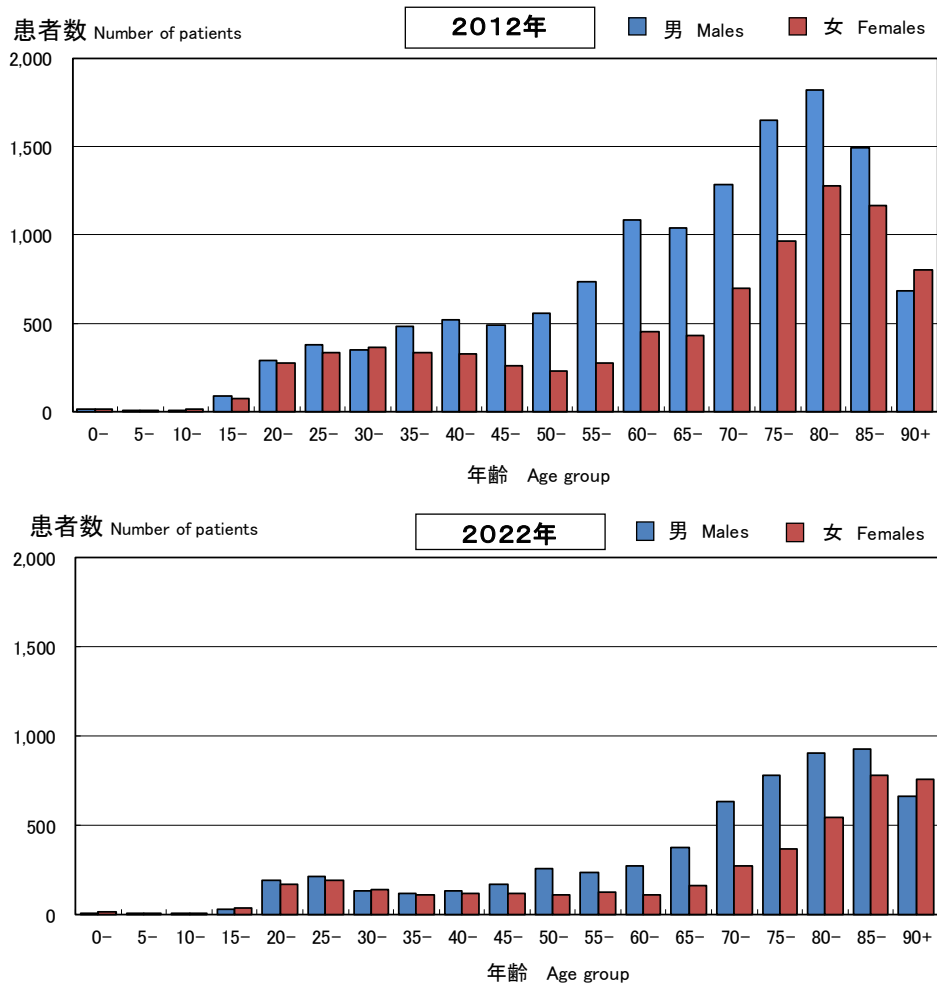


図2 新登録結核患者数の年齢分布, 性別, 2012年・2022年
Fig. 2 Age distribution of newly notified tuberculosis patients by sex in Japan, in 2012 and in 2022

表 1 新登録結核患者数（全結核、初回治療、再治療別、肺結核・肺外結核別）、年齢階層別、2013～2022年
 Table 1 Number of newly notified tuberculosis patients (all forms, new and re-treatment, pulmonary and extra-pulmonary), by age group, in Japan, 2013-2022

年齢階層 Age group	新登録全結核患者数 Tuberculosis notifications all forms (*1)	新登録結核患者数率 (罹患率) Tuberculosis notification rates, all forms (*2)	初回治療結核 New tuberculosis																																																																			
			肺結核 Pulmonary tuberculosis																																																																			
			喀痰塗抹陰性肺結核 Sputum-smear negative																																																																			
			喀痰塗抹陽性肺結核 肺結核 Sputum-smear positive											その他菌陽性肺結核 肺結核 Other bacteriologically positive											喀痰塗抹陰性・肺外結核 肺外結核 Other sputum-smear negative											菌検査結果不明 Bacteriological test results unknown	肺外結核 Extra-pulmonary tuberculosis																																	
2013	2014	2015	2016	2017	2018	2019	2020	2021	2022	2013	2014	2015	2016	2017	2018	2019	2020	2021	2022	2013	2014	2015	2016	2017	2018	2019	2020	2021	2022	2013	2014	2015	2016	2017	2018	2019	2020	2021	2022	2013	2014	2015	2016	2017	2018	2019	2020	2021	2022	2013	2014	2015	2016	2017	2018	2019	2020	2021	2022											
Total	20,495	19,615	18,280	17,625	16,789	15,990	14,860	12,739	11,519	10,235	16.1	15.4	14.4	13.9	13.3	12.3	11.5	10.1	9.2	8.2	7,584	7,153	6,676	6,281	6,031	5,485	4,966	4,413	3,962	3,562	5,174	4,937	4,819	4,777	4,645	4,417	4,193	3,434	3,110	2,712	2,041	1,918	1,638	1,709	1,588	1,474	1,322	1,118	942	827	160	173	139	106	87	82	71	57	57	51	4,274	4,255	3,976	3,844	3,599	3,400	3,241	3,171	2,988	2,699
0-14	66	49	51	59	59	51	38	52	29	35	0.4	0.3	0.3	0.4	0.4	0.3	0.2	0.3	0.2	0.2	0	1	2	2	4	4	0	2	2	2	14	11	12	12	8	7	6	7	6	8	26	18	17	20	24	27	18	23	8	17	1	4	2	5	5	4	1	4	1	3	20	13	16	18	13	9	13	9	11	5
15-19	165	168	163	190	148	158	142	75	98	71	2.7	2.8	2.8	3.1	2.5	2.7	2.4	1.3	1.8	1.3	44	31	40	45	40	39	38	19	33	17	37	54	47	48	47	34	43	25	35	25	45	50	37	69	44	54	39	21	13	12	4	4	3	4	1	2	0	0	1	1	21	15	29	14	16	20	19	8	12	14
20-29	1,196	1,188	1,127	1,235	1,231	1,273	1,164	1,027	930	777	9.1	9.2	9.0	9.8	9.8	10.1	9.2	8.1	7.4	6.1	345	321	277	269	279	278	285	249	197	192	346	356	378	420	423	444	414	336	320	268	302	277	271	300	294	311	232	172	179	137	15	18	12	19	13	10	8	7	4	6	144	164	151	160	180	185	190	220	198	151
30-39	1,317	1,235	1,101	1,004	987	895	767	696	597	503	7.9	7.7	7.1	6.5	6.6	6.0	5.4	4.8	4.3	3.7	393	323	327	269	289	250	194	185	166	135	379	371	313	320	298	276	256	196	187	130	261	255	202	207	171	163	133	123	87	105	17	16	12	7	8	4	6	5	3	1	200	202	192	157	178	153	141	152	134	116
40-49	1,496	1,440	1,363	1,228	1,159	1,034	985	741	640	546	8.3	7.8	7.5	6.5	6.1	5.5	5.3	4.0	3.6	3.1	495	453	426	363	348	307	287	221	170	157	418	416	396	360	373	306	301	206	186	152	227	229	188	198	169	157	149	111	90	84	16	20	12	8	5	10	5	11	6	6	266	234	243	228	186	202	182	170	144	118
50-59	1,665	1,514	1,351	1,295	1,268	1,150	1,054	924	841	733	10.8	9.8	8.8	8.4	8.1	7.2	6.5	5.5	4.9	4.2	606	550	501	433	414	394	340	293	283	249	429	366	357	380	381	308	290	248	231	207	207	187	156	151	164	134	147	118	99	78	15	24	14	6	8	3	7	4	10	4	270	277	234	243	219	239	199	215	185	159
60-69	2,833	2,597	2,359	2,213	2,024	1,704	1,472	1,262	1,070	921	15.4	14.3	13.1	12.0	11.4	10.0	9.1	8.0	7.0	6.1	1,045	936	858	792	756	638	494	462	365	302	716	656	616	566	536	455	431	335	300	280	283	253	241	205	203	171	159	131	100	73	29	23	20	26	14	9	12	8	9	5	556	547	476	498	408	322	289	258	249	206
70-79	4,359	4,028	3,757	3,407	3,187	2,995	2,810	2,547	2,241	2,066	31.4	28.4	26.9	24.5	22.0	19.7	17.6	15.7	13.7	12.6	1,572	1,465	1,353	1,184	1,169	1,049	976	875	739	726	1,064	961	966	856	830	809	796	713	612	533	340	297	257	258	236	232	177	184	150	148	30	30	26	6	16	25	12	9	9	13	1,081	1,017	974	917	771	743	695	644	623	564
80-89	5,856	5,753	5,317	5,130	4,822	4,534	4,061	3,696	3,440	3,159	76.2	72.5	66.0	60.8	55.5	51.2	45.4	40.3	36.5	32.6	2,426	2,389	2,194	2,095	1,904	1,756	1,513	1,391	1,313	1,197	1,392	1,309	1,289	1,311	1,267	1,229	1,094	896	812	763	290	290	216	228	217	179	199	181	163	137	32	30	23	19	10	15	14	15	7	12	1,354	1,401	1,260	1,219	1,192	1,147	1,062	1,053	1,010	952
90+	1,542	1,643	1,691	1,856	1,904	1,806	1,967	1,739	1,633	1,424	95.6	95.7	92.0	96.3	92.7	82.8	85.2	72.7	64.6	34.0	668	684	728	829	828	768	839	716	674	585	379	437	445	494	482	548	562	472	421	346	60	62	53	53	66	46	69	54	53	36	1	4	7	2	4	5	1	0	2	0	362	385	381	390	436	380	431	442	422	414

*1: All forms include new and re-treatment tuberculosis patients.

*2: 人口10万人率 Rate per 100,000 population

年齢階層 Age group	喀痰塗抹陽性肺結核 Sputum-smear positive	その他菌陽性肺結核 Other bacteriologically positive	菌検査結果不明 Bacteriological test results unknown	肺外結核 Extra-pulmonary tuberculosis	再治療結核 Re-treatment tuberculosis																																														
					肺結核 Pulmonary tuberculosis																																														
					喀痰塗抹陰性肺結核 Sputum-smear negative																																														
					2013	2014	2015	2016	2017	2018	2019	2020	2021	2022	2013	2014	2015	2016	2017	2018	2019	2020	2021	2022	2013	2014	2015	2016	2017	2018	2019	2020	2021	2022	2013	2014	2015	2016	2017	2018	2019	2020	2021	2022							
Total	535	498	455	361	328	296	265	202	165	141	296	296	264	249	223	188	189	147	113	114	163	157	119	115	99	85	80	69	58	45	19	17	13	10	10	6	8	6	6	2	249	211	181	173	179	157	125	122	118	82	
0-14	0	0	0	1	0	0	0	1	0	0	1	0	0	0	1	0	0	0	0	1	0	3	1	1	1	1	0	0	1	0	0	0	0	1	0	2	0	0	0	0	0	1	1	0	0	1	0	0	5	0	0
15-19	5	5	1	2	0	1	0	1	2	0	1	3	2	5	0	4	0	0	2	1	5	5	3	0	0	3	2	1	0	0	1	1	1	0	1	0	1	0	0	0	0	2	6	1	2	0	0	1	0	0	0
20-29	12	8	15	13	10	18	11	6	5	6	16	15	12	11	15	11	13	13	11	3	7	20	9	9	6	6	3	8	8	8	2	1	0	1	1	1	1	0	0	0	7	8	2	13	10	9	7	16	8	6	
30-39	19	18	21	13	16	9	5	9	3	1	13	14	20	12	7	11	12	6	4	7	15	12	2	10	6	8	8	5	5	3	1	2	0	0	1	1	1	0	0	0	19	22	12	9	13	10	11	5	8	5	
40-49	29	27	28	23	23	14	21	5	12	12	12	18	22	13	20	11	14	6	1	4	10	19	15	16	13	9	8	6	9	3	2	0	4	1	0	2	0	0	1	0	22	24	21	14	19	21	13	11	16	10	
50-59	57	47	34	20	35	23	24	14	8	15	34	23	26	26	15	18	17	12	6	7	18	21	5	12	11	13	10	10	7	4	3	3	3	5	3	0	3	1	1	0	26	16	21	19	18	18	17	9	11	10	
60-69	74	74	77	60	48	55	31	27	14	15	41	52	26	23	30	26	29	13	16	22	41	23	19	18	13	9	14	11	7	6	5	2	3	1	1	1	0	1	0	2	43	31	23	24	15	18	13	16	10	10	
70-79	110	113	85	68	69	52	59	50	35	30	75	65	58	53	35	38	50	29	21	24	29	32	28	26	25	21	21	15	10	8	4	4	1	0	1	0	1	4	1	0	54	44	39	39	35	26	23	25	21	20	
80-89	184	168	153	120	91	99	82	63	61	44	85	85	81	78	69	54	37	47	33	35	29	20	28	18	21	11	11	11	5	4	4	1	0	1	0	0	0	1	0	63	57	52	40	50	42	31	29	29	14		
90+	46	38	41	41	36	25	32	26	25	18	18	21	17	28	31	15	17	22	18	11	6	4	9	6	3	5	5	1	1	7	0	0	0	1	0	0	2	0	2	0	12	8	10	13	18	13	9	6	15	7	

表 2 新登録潜在性結核感染症登録者数、性・年齢階層別、2020～2022年

Table 2 Newly notified latent tuberculosis infection (LTBI) patients, by sex and age group, in Japan, from 2020 to 2022

年齢 Age group	2020年					2021年					2022年				
	総数 Total	性 Sex		割合 (%)	女/男 Ratio of F/M	総数 Total	性 Sex		割合 (%)	女/男 Ratio of F/M	総数 Total	性 Sex		割合 (%)	女/男 Ratio of F/M
		男 Males	女 Females				男 Males	女 Females				男 Males	女 Females		
総数 Total	5,575	2,752	2,823	100.0	1.0	5,140	2,585	2,555	100.0	1.0	5,025	2,487	2,538	100.0	1.0
0-4	365	166	199	6.5	1.2	281	136	145	5.5	1.1	279	135	144	5.6	1.1
5-9	58	39	19	1.0	0.5	35	19	16	0.7	0.8	42	18	24	0.8	1.3
10-14	36	18	18	0.6	1.0	28	12	16	0.5	1.3	33	12	21	0.7	1.8
15-19	73	38	35	1.3	0.9	51	28	23	1.0	0.8	62	24	38	1.2	1.6
20-24	265	130	135	4.8	1.0	197	94	103	3.8	1.1	209	100	109	4.2	1.1
25-29	249	110	139	4.5	1.3	234	119	115	4.6	1.0	253	129	124	5.0	1.0
30-34	225	91	134	4.0	1.5	211	83	128	4.1	1.5	163	75	88	3.2	1.2
35-39	229	100	129	4.1	1.3	203	97	106	3.9	1.1	187	91	96	3.7	1.1
40-44	263	115	148	4.7	1.3	238	103	135	4.6	1.3	206	80	126	4.1	1.6
45-49	378	166	212	6.8	1.3	309	134	175	6.0	1.3	314	116	198	6.2	1.7
50-54	397	166	231	7.1	1.4	372	159	213	7.2	1.3	335	134	201	6.7	1.5
55-59	363	153	210	6.5	1.4	331	128	203	6.4	1.6	333	144	189	6.6	1.3
60-64	394	215	179	7.1	0.8	330	159	171	6.4	1.1	298	152	146	5.9	1.0
65-69	512	278	234	9.2	0.8	417	247	170	8.1	0.7	368	194	174	7.3	0.9
70+	1,768	967	801	31.7	0.8	1,903	1,067	836	37.0	0.8	1,943	1,083	860	38.7	0.8

Ratio of F/M: Ratio of female patients to male patients

#: proportion

旧表 新登録結核患者数, および潜在性結核感染症治療対象者数、登録月別, 2022年
Previous table Newly notified tuberculosis cases by registered month, 2022

登録月 Registered month	活動性結核 Active tuberculosis									
	肺結核活動性 Active pulmonary tuberculosis									(別掲) 潜在性結 核感染症 LTBI* on treatment
	総数 All active tuberculosis	総数 All active pulmonary tuberculosis	喀痰塗抹陽性 Sputum smear positive				その他結 核菌陽性 Other bacillary positive	菌陰性・ その他 Bacillary negative or bacillary results unknown	肺外結核 活動性 Extra- pulmonary	
			総数 All sputum smear positive	初回治療 New	再治療 Retreatment	141				
3,703										
総数 Total	10,235	7,454	3,703	3,562	141	2,826	925	2,781	5,025	
1月 Jan.	771	544	285	271	14	192	67	227	346	
2月 Feb.	703	498	239	231	8	204	55	205	335	
3月 Mar.	953	674	329	317	12	256	89	279	416	
4月 Apr.	882	639	308	295	13	239	92	243	455	
5月 May	904	614	288	283	5	243	83	290	434	
6月 Jun.	983	709	356	343	13	264	89	274	536	
7月 Jul.	834	608	294	286	8	230	84	226	493	
8月 Aug.	858	626	317	301	16	243	66	232	402	
9月 Sep.	888	668	357	342	15	247	64	220	414	
10月 Oct.	839	655	333	315	18	251	71	184	413	
11月 Nov.	807	607	301	297	4	233	73	200	413	
12月 Dec.	813	612	296	281	15	224	92	201	368	

* LTBI: Latent Tuberculosis Infection. These are not included in the number of active tuberculosis.

表 3.1 新登録結核患者数、結核病類別、性・年齢階層別、1998～2022年
Table 3.1 Newly notified tuberculosis patients by affected organ, sex and age group, in Japan, from 1998 to 2022

性・年齢 2022年 Sex, Age-group, in 2022	全結核 Tuberculosis notifications, all forms	肺結核 Pulmonary tuberculosis		肺外結核 Extra-pulmonary tuberculosis																	
		肺 Lungs	気管支 Bronchi	咽喉・ 喉頭 Pharynx / Larynx	粟粒 Miliary	胸膜炎 Pleuritis	膿胸 Empyema	肺門・縦隔 リンパ節 Hilar / Mediastinal lymph node	他の リンパ節 Other lymph nodes	髄膜炎 Menin- ges	腸 Intes- tines	脊椎 Verte- brae	他の 骨関節 Other joints / bones	腎・尿路 Kidneys / Urinary tracts	性器 Genitals	皮膚 Skins	眼 Eyes	耳 Ears	腹膜炎 Perito- neum	心膜炎 Pericar- dium	他の 臓器 Other organs
総数 Total	10,235	7,813 (76.3)	53 (0.5)	21 (0.2)	527 (5.1)	1,969 (19.2)	19 (0.2)	90 (0.9)	560 (5.5)	100 (1.0)	153 (1.5)	118 (1.2)	62 (0.6)	42 (0.4)	7 (0.1)	73 (0.7)	32 (0.3)	14 (0.1)	121 (1.2)	56 (0.5)	94 (0.9)
男 Male	6,058	4,727 (78.0)	23 (0.4)	5 (0.1)	208 (3.4)	1,361 (22.5)	14 (0.2)	38 (0.6)	192 (3.2)	60 (1.0)	70 (1.2)	67 (1.1)	31 (0.5)	26 (0.4)	6 (0.1)	31 (0.5)	15 (0.2)	5 (0.1)	67 (1.1)	38 (0.6)	45 (0.7)
女 Female	4,177	3,086 (73.9)	30 (0.7)	16 (0.4)	319 (7.6)	608 (14.6)	5 (0.1)	52 (1.2)	368 (8.8)	40 (1.0)	83 (2.0)	51 (1.2)	31 (0.7)	16 (0.4)	1 (0.0)	42 (1.0)	17 (0.4)	9 (0.2)	54 (1.3)	18 (0.4)	49 (1.2)
0-14	35	31 (88.6)	0 (0.0)	0 (0.0)	0 (0.0)	0 (0.0)	0 (0.0)	5 (14.3)	2 (5.7)	0 (0.0)	0 (0.0)	0 (0.0)	0 (0.0)	0 (0.0)	0 (0.0)	0 (0.0)	0 (0.0)	0 (0.0)	0 (0.0)	0 (0.0)	3 (8.6)
15-19	71	57 (80.3)	0 (0.0)	0 (0.0)	0 (0.0)	4 (5.6)	0 (0.0)	2 (2.8)	4 (5.6)	1 (1.4)	0 (0.0)	1 (1.4)	0 (0.0)	0 (0.0)	0 (0.0)	0 (0.0)	0 (0.0)	0 (0.0)	0 (0.0)	0 (0.0)	3 (4.2)
20-29	777	624 (80.3)	2 (0.3)	1 (0.1)	7 (0.9)	66 (8.5)	1 (0.1)	13 (1.7)	95 (12.2)	7 (0.9)	14 (1.8)	9 (1.2)	4 (0.5)	1 (0.1)	0 (0.0)	2 (0.3)	3 (0.4)	0 (0.0)	9 (1.2)	0 (0.0)	6 (0.8)
30-39	503	389 (77.3)	4 (0.8)	0 (0.0)	11 (2.2)	50 (9.9)	3 (0.6)	8 (1.6)	70 (13.9)	4 (0.8)	13 (2.6)	4 (0.8)	4 (0.8)	2 (0.4)	0 (0.0)	4 (0.8)	0 (0.0)	2 (0.4)	2 (0.4)	1 (0.2)	8 (1.6)
40-49	546	424 (77.7)	3 (0.5)	4 (0.7)	9 (1.6)	56 (10.3)	0 (0.0)	9 (1.6)	52 (9.5)	7 (1.3)	20 (3.7)	7 (1.3)	2 (0.4)	1 (0.2)	1 (0.2)	5 (0.9)	9 (1.6)	1 (0.2)	6 (1.1)	0 (0.0)	7 (1.3)
50-59	733	575 (78.4)	2 (0.3)	1 (0.1)	11 (1.5)	89 (12.1)	1 (0.1)	7 (1.0)	61 (8.3)	4 (0.5)	18 (2.5)	8 (1.1)	5 (0.7)	4 (0.5)	0 (0.0)	8 (1.1)	5 (0.7)	3 (0.4)	9 (1.2)	6 (0.8)	12 (1.6)
60-69	921	722 (78.4)	6 (0.7)	1 (0.1)	34 (3.7)	127 (13.8)	1 (0.1)	13 (1.4)	49 (5.3)	11 (1.2)	20 (2.2)	11 (1.2)	5 (0.5)	5 (0.5)	1 (0.1)	8 (0.9)	1 (0.1)	0 (0.0)	12 (1.3)	10 (1.1)	5 (0.5)
70-79	2,066	1,545 (74.8)	11 (0.5)	4 (0.2)	97 (4.7)	390 (18.9)	3 (0.1)	20 (1.0)	107 (5.2)	22 (1.1)	34 (1.6)	35 (1.7)	14 (0.7)	11 (0.5)	4 (0.2)	18 (0.9)	8 (0.4)	3 (0.1)	29 (1.4)	11 (0.5)	25 (1.2)
80-89	3,159	2,353 (74.5)	18 (0.6)	6 (0.2)	236 (7.5)	782 (24.8)	6 (0.2)	12 (0.4)	95 (3.0)	38 (1.2)	31 (1.0)	35 (1.1)	20 (0.6)	14 (0.4)	1 (0.0)	17 (0.5)	5 (0.2)	5 (0.2)	44 (1.4)	23 (0.7)	21 (0.7)
90+	1,424	1,093 (76.8)	7 (0.5)	4 (0.3)	122 (8.6)	405 (28.4)	4 (0.3)	1 (0.1)	25 (1.8)	6 (0.4)	3 (0.2)	8 (0.6)	8 (0.6)	4 (0.3)	0 (0.0)	11 (0.8)	1 (0.1)	0 (0.0)	10 (0.7)	2 (0.1)	4 (0.3)
年 Year	総数 Total																				
1998	41,033	33,981 (82.8)	-	-	505 (1.2)	5,125 (12.5)	251 (0.6)	136 (0.3)	1,469 (3.6)	154 (0.4)	335 (0.8)	385 (0.9)	328 (0.8)	227 (0.6)	78 (0.2)	100 (0.2)	12 (0.0)	25 (0.1)	-	-	692 (1.7)
1999	43,818	36,190 (82.6)	-	-	603 (1.4)	5,586 (12.7)	221 (0.5)	143 (0.3)	1,538 (3.5)	163 (0.4)	345 (0.8)	334 (0.8)	300 (0.7)	179 (0.4)	96 (0.2)	94 (0.2)	13 (0.0)	28 (0.1)	-	-	684 (1.6)
2000	39,384	32,338 (82.1)	-	-	597 (1.5)	5,108 (13.0)	202 (0.5)	123 (0.3)	1,432 (3.6)	158 (0.4)	356 (0.9)	319 (0.8)	272 (0.7)	181 (0.5)	72 (0.2)	123 (0.3)	16 (0.0)	38 (0.1)	-	-	656 (1.7)
2001	35,489	28,868 (81.3)	-	-	642 (1.8)	4,840 (13.6)	162 (0.5)	102 (0.3)	1,368 (3.9)	177 (0.5)	275 (0.8)	276 (0.8)	274 (0.8)	172 (0.5)	72 (0.2)	104 (0.3)	11 (0.0)	25 (0.1)	-	-	619 (1.7)
2002	32,828	26,472 (80.6)	-	-	626 (1.9)	4,666 (14.2)	152 (0.5)	84 (0.3)	1,269 (3.9)	188 (0.6)	323 (1.0)	299 (0.9)	222 (0.7)	148 (0.5)	66 (0.2)	100 (0.3)	19 (0.1)	29 (0.1)	-	-	544 (1.7)
2003	31,638	25,478 (80.5)	-	-	639 (2.0)	4,539 (14.3)	142 (0.4)	83 (0.3)	1,341 (4.2)	149 (0.5)	276 (0.9)	268 (0.8)	223 (0.7)	144 (0.5)	47 (0.1)	87 (0.3)	15 (0.0)	28 (0.1)	-	-	570 (1.8)
2004	29,736	23,829 (80.1)	-	-	617 (2.1)	4,491 (15.1)	125 (0.4)	70 (0.2)	1,293 (4.3)	160 (0.5)	299 (1.0)	275 (0.9)	220 (0.7)	112 (0.4)	53 (0.2)	95 (0.3)	13 (0.0)	30 (0.1)	-	-	564 (1.9)
2005	28,319	22,655 (80.0)	-	-	585 (2.1)	4,338 (15.3)	115 (0.4)	88 (0.3)	1,151 (4.1)	180 (0.6)	296 (1.0)	233 (0.8)	201 (0.7)	130 (0.5)	37 (0.1)	98 (0.3)	11 (0.0)	33 (0.1)	-	-	536 (1.9)
2006	26,384	20,856 (79.0)	-	-	616 (2.3)	4,192 (15.9)	97 (0.4)	79 (0.3)	1,191 (4.5)	127 (0.5)	263 (1.0)	248 (0.9)	231 (0.9)	112 (0.4)	40 (0.2)	109 (0.4)	9 (0.0)	24 (0.1)	-	-	554 (2.1)
2007	25,311	20,264 (80.1)	108 (0.4)	31 (0.1)	602 (2.4)	4,134 (16.3)	75 (0.3)	57 (0.2)	1,186 (4.7)	153 (0.6)	328 (1.3)	232 (0.9)	190 (0.8)	108 (0.4)	34 (0.1)	92 (0.4)	19 (0.1)	18 (0.1)	92 (0.4)	61 (0.2)	281 (1.1)
2008	24,760	19,780 (79.9)	117 (0.5)	43 (0.2)	570 (2.3)	4,001 (16.2)	78 (0.3)	68 (0.3)	1,194 (4.8)	171 (0.7)	292 (1.2)	273 (1.1)	170 (0.7)	121 (0.5)	34 (0.1)	92 (0.4)	13 (0.1)	29 (0.1)	144 (0.6)	80 (0.3)	181 (0.7)
2009	24,170	19,278 (79.8)	121 (0.5)	36 (0.1)	604 (2.5)	3,940 (16.3)	63 (0.3)	73 (0.3)	1,221 (5.1)	162 (0.7)	321 (1.3)	241 (1.0)	182 (0.8)	100 (0.4)	23 (0.1)	121 (0.5)	26 (0.1)	22 (0.1)	168 (0.7)	88 (0.4)	179 (0.7)
2010	23,261	18,735 (80.5)	127 (0.5)	53 (0.2)	598 (2.6)	3,959 (17.0)	48 (0.2)	74 (0.3)	1,158 (5.0)	138 (0.6)	330 (1.4)	239 (1.0)	159 (0.7)	88 (0.4)	35 (0.2)	97 (0.4)	29 (0.1)	12 (0.1)	154 (0.7)	76 (0.3)	171 (0.7)
2011	22,681	17,969 (79.2)	129 (0.6)	57 (0.3)	695 (3.1)	3,929 (17.3)	52 (0.2)	70 (0.3)	1,199 (5.3)	156 (0.7)	317 (1.4)	250 (1.1)	145 (0.6)	83 (0.4)	22 (0.1)	89 (0.4)	27 (0.1)	21 (0.1)	173 (0.8)	89 (0.4)	187 (0.8)
2012	21,283	16,826 (79.1)	107 (0.5)	46 (0.2)	608 (2.9)	3,653 (17.2)	63 (0.3)	134 (0.6)	1,038 (4.9)	152 (0.7)	348 (1.6)	255 (1.2)	157 (0.7)	82 (0.4)	20 (0.1)	97 (0.5)	34 (0.2)	16 (0.1)	176 (0.8)	80 (0.4)	166 (0.8)
2014	19,615	15,586 (79.5)	100 (0.5)	37 (0.2)	642 (3.3)	3,421 (17.4)	41 (0.2)	137 (0.7)	978 (5.0)	184 (0.9)	281 (1.4)	212 (1.1)	132 (0.7)	68 (0.3)	15 (0.1)	101 (0.5)	30 (0.2)	15 (0.1)	207 (1.1)	67 (0.3)	153 (0.8)
2015	18,280	14,581 (79.8)	119 (0.7)	43 (0.2)	631 (3.5)	3,277 (17.9)	46 (0.3)	128 (0.7)	813 (4.4)	166 (0.9)	248 (1.4)	192 (1.1)	98 (0.5)	73 (0.4)	21 (0.1)	87 (0.5)	20 (0.1)	19 (0.1)	176 (1.0)	69 (0.4)	134 (0.7)
2016	17,625	14,014 (79.5)	119 (0.7)	44 (0.2)	633 (3.6)	3,141 (17.8)	30 (0.2)	121 (0.7)	835 (4.7)	164 (0.9)	264 (1.5)	194 (1.1)	101 (0.6)	83 (0.5)	19 (0.1)	80 (0.5)	25 (0.1)	15 (0.1)	184 (1.0)	81 (0.5)	149 (0.8)
2017	16,789	13,469 (80.2)	97 (0.6)	30 (0.2)	687 (4.1)	2,868 (17.1)	31 (0.2)	140 (0.8)	779 (4.6)	164 (1.0)	220 (1.3)	150 (0.9)	91 (0.5)	53 (0.3)	19 (0.1)	80 (0.5)	19 (0.1)	18 (0.1)	178 (1.1)	73 (0.4)	161 (1.0)
2018	15,590	12,505 (80.2)	84 (0.5)	31 (0.2)	616 (4.0)	2,640 (16.9)	27 (0.2)	107 (0.7)	761 (4.9)	150 (1.0)	228 (1.5)	155 (1.0)	97 (0.6)	67 (0.4)	16 (0.1)	79 (0.5)	21 (0.1)	10 (0.1)	148 (0.9)	65 (0.4)	129 (0.8)
2019	14,460	11,584 (80.1)	76 (0.5)	24 (0.2)	639 (4.4)	2,671 (18.5)	28 (0.2)	111 (0.8)	669 (4.6)	137 (0.9)	227 (1.6)	135 (0.9)	73 (0.5)	51 (0.4)	18 (0.1)	63 (0.4)	25 (0.2)	12 (0.1)	152 (1.1)	50 (0.3)	125 (0.9)
2020	12,739	9,906 (77.8)	93 (0.7)	32 (0.3)	653 (5.1)	2,356 (18.5)	30 (0.2)	132 (1.0)	704 (5.5)	129 (1.0)	197 (1.5)	122 (1.0)	89 (0.7)	57 (0.4)	23 (0.2)	61 (0.5)	30 (0.2)	12 (0.1)	151 (1.2)	48 (0.4)	120 (0.9)
2021	11,519	8,810 (76.5)	91 (0.8)	28 (0.2)	573 (5.0)	2,168 (18.8)	14 (0.1)	101 (0.9)	659 (5.7)	100 (0.9)	186 (1.6)	145 (1.3)	103 (0.9)	53 (0.5)	13 (0.1)	68 (0.6)	30 (0.3)	6 (0.1)	142 (1.2)	57 (0.5)	146 (1.3)
2022	10,235	7,813 (76.3)	53 (0.5)	21 (0.2)	527 (5.1)	1,969 (19.2)	19 (0.2)	90 (0.9)	560 (5.5)	100 (1.0)	153 (1.5)	118 (1.2)	62 (0.6)	42 (0.4)	7 (0.1)	73 (0.7)	32 (0.3)	14 (0.1)	121 (1.2)	56 (0.5)	94 (0.9)

注1: 結核病類は重複あり。 Note1: Cases having multiple organs are counted independently.
注2: 括弧内は各性・年齢階層、登録年の新登録患者数に対する割合(%)。 Note2: Numbers in brackets indicate the proportion out of the total number of newly notified tuberculosis cases (all forms) for each sex and age group.

表 3.2 粟粒結核患者数・割合、性・年齢階層別、2004～2022年

Table 3.2 Number and proportio of miliary tuberculosis by age group and sex, 2004–2022

年 year	年齢総数 Age group total	0～9歳 0-9 yrs		10～19歳 10-19 yrs		20～29歳 20-29 yrs		30～39歳 30-39 yrs		40～49歳 40-49 yrs		50～59歳 50-59 yrs		60～69歳 60-69 yrs		70～79歳 70-79 yrs		80歳以上 80 yrs+	
		数 n	割合(%)	数 n	割合(%)	数 n	割合(%)	数 n	割合(%)	数 n	割合(%)	数 n	割合(%)	数 n	割合(%)	数 n	割合(%)	数 n	割合(%)
男女計 Total	2004	617 (2.1)	0 (0.0)	6 (1.8)	19 (0.8)	22 (0.8)	24 (1.0)	44 (1.1)	82 (1.8)	199 (2.9)	221 (3.6)								
	2005	585 (2.1)	1 (1.3)	3 (0.9)	13 (0.6)	38 (1.4)	25 (1.1)	41 (1.1)	77 (1.8)	180 (2.8)	207 (3.2)								
	2006	616 (2.3)	1 (1.9)	1 (0.4)	19 (0.9)	24 (1.0)	27 (1.3)	42 (1.3)	84 (2.2)	173 (2.8)	245 (3.9)								
	2007	602 (2.4)	0 (0.0)	2 (0.9)	10 (0.5)	20 (0.9)	23 (1.2)	26 (0.9)	75 (2.0)	190 (3.4)	256 (4.0)								
	2008	570 (2.3)	1 (1.4)	1 (0.5)	17 (0.9)	18 (0.8)	21 (1.1)	40 (1.4)	64 (1.7)	162 (2.9)	246 (3.7)								
	2009	604 (2.5)	3 (6.4)	2 (0.9)	6 (0.4)	26 (1.2)	25 (1.4)	38 (1.5)	68 (1.9)	164 (3.2)	272 (3.9)								
	2010	598 (2.6)	0 (0.0)	2 (0.7)	11 (0.7)	20 (1.0)	22 (1.2)	23 (1.1)	80 (2.2)	139 (2.8)	301 (4.4)								
	2011	695 (3.1)	1 (1.9)	2 (1.1)	18 (1.3)	21 (1.2)	28 (1.5)	27 (1.3)	58 (1.8)	155 (3.2)	385 (5.3)								
	2012	608 (2.9)	0 (0.0)	2 (1.1)	4 (0.3)	10 (0.7)	20 (1.3)	28 (1.6)	53 (1.8)	147 (3.2)	344 (4.8)								
	2013	635 (3.1)	0 (0.0)	4 (2.1)	9 (0.8)	21 (1.6)	15 (1.0)	23 (1.4)	59 (2.1)	151 (3.5)	353 (4.8)								
	2014	642 (3.3)	1 (3.1)	2 (1.1)	7 (0.6)	15 (1.2)	12 (0.8)	23 (1.5)	53 (2.0)	133 (3.3)	396 (5.4)								
	2015	631 (3.5)	0 (0.0)	2 (1.1)	11 (1.0)	8 (0.7)	24 (1.8)	17 (1.3)	36 (1.5)	153 (4.1)	380 (5.4)								
	2016	633 (3.6)	1 (2.7)	0 (0.0)	8 (0.6)	16 (1.6)	12 (1.0)	26 (2.0)	50 (2.3)	135 (4.0)	385 (5.5)								
	2017	687 (4.1)	3 (7.3)	3 (1.8)	8 (0.6)	18 (1.8)	11 (0.9)	24 (1.9)	45 (2.2)	123 (3.9)	452 (6.7)								
	2018	616 (4.0)	1 (3.3)	2 (1.1)	13 (1.0)	11 (1.2)	16 (1.5)	23 (2.0)	41 (2.4)	120 (4.0)	389 (6.1)								
	2019	639 (4.4)	2 (7.4)	2 (1.3)	15 (1.3)	12 (1.6)	17 (1.7)	21 (2.0)	35 (2.4)	118 (4.2)	417 (6.9)								
	2020	653 (5.1)	1 (2.8)	0 (0.0)	16 (1.6)	15 (2.2)	13 (1.8)	24 (2.6)	29 (2.3)	116 (4.6)	439 (8.1)								
	2021	573 (5.0)	1 (5.3)	0 (0.0)	16 (1.7)	11 (1.8)	7 (1.1)	19 (2.3)	37 (3.5)	106 (4.7)	376 (7.4)								
	2022	527 (5.1)	0 (0.0)	0 (0.0)	7 (0.9)	11 (2.2)	9 (1.6)	11 (1.5)	34 (3.7)	97 (4.7)	358 (7.8)								
男 Males	2004	282 (1.5)	0 (0.0)	2 (1.3)	10 (0.8)	15 (0.9)	21 (1.3)	32 (1.1)	49 (1.5)	78 (1.7)	75 (2.1)								
	2005	269 (1.5)	1 (2.2)	2 (1.2)	7 (0.6)	24 (1.5)	15 (1.0)	23 (0.8)	47 (1.5)	83 (2.0)	67 (1.8)								
	2006	309 (1.8)	0 (0.0)	1 (0.9)	12 (1.1)	17 (1.3)	23 (1.6)	34 (1.3)	55 (2.0)	78 (1.9)	89 (2.4)								
	2007	250 (1.5)	0 (0.0)	2 (1.8)	6 (0.6)	13 (1.0)	14 (1.1)	16 (0.7)	45 (1.7)	76 (2.0)	78 (2.0)								
	2008	241 (1.5)	0 (0.0)	1 (0.9)	13 (1.4)	12 (1.0)	17 (1.4)	26 (1.3)	39 (1.5)	65 (1.8)	68 (1.8)								
	2009	211 (1.4)	0 (0.0)	1 (1.0)	2 (0.2)	18 (1.6)	18 (1.5)	21 (1.2)	26 (1.0)	57 (1.7)	68 (1.7)								
	2010	232 (1.6)	0 (0.0)	2 (1.3)	7 (0.8)	11 (1.1)	19 (1.6)	14 (0.9)	40 (1.5)	54 (1.7)	85 (2.1)								
	2011	283 (2.0)	1 (4.2)	0 (0.0)	12 (1.6)	14 (1.6)	17 (1.5)	18 (1.2)	34 (1.5)	66 (2.1)	121 (2.9)								
	2012	243 (1.9)	0 (0.0)	1 (1.0)	4 (0.6)	7 (0.8)	17 (1.7)	22 (1.7)	33 (1.6)	46 (1.6)	113 (2.8)								
	2013	234 (1.9)	0 (0.0)	2 (2.0)	2 (0.3)	14 (2.0)	7 (0.8)	12 (1.0)	34 (1.7)	52 (1.8)	111 (2.7)								
	2014	249 (2.1)	0 (0.0)	1 (1.1)	3 (0.5)	7 (1.0)	7 (0.8)	9 (0.9)	41 (2.2)	66 (2.5)	115 (2.8)								
	2015	231 (2.1)	0 (0.0)	1 (1.1)	6 (1.0)	7 (1.2)	19 (2.3)	11 (1.2)	20 (1.2)	65 (2.6)	102 (2.7)								
	2016	246 (2.3)	1 (4.8)	0 (0.0)	5 (0.7)	11 (2.0)	7 (0.9)	14 (1.6)	26 (1.6)	60 (2.7)	122 (3.2)								
	2017	264 (2.6)	1 (3.8)	2 (1.9)	3 (0.4)	11 (2.1)	5 (0.7)	17 (1.9)	27 (1.9)	60 (2.8)	138 (3.7)								
	2018	258 (2.8)	0 (0.0)	2 (2.0)	9 (1.2)	9 (1.9)	11 (1.7)	18 (2.3)	26 (2.2)	56 (2.9)	127 (3.7)								
	2019	244 (2.9)	1 (8.3)	1 (1.2)	12 (1.7)	6 (1.4)	14 (2.4)	15 (2.1)	16 (1.6)	62 (3.3)	117 (3.7)								
	2020	256 (3.4)	1 (5.0)	0 (0.0)	7 (1.3)	12 (3.5)	9 (2.1)	16 (2.6)	17 (1.9)	52 (3.1)	142 (4.8)								
	2021	238 (3.5)	0 (0.0)	0 (0.0)	10 (2.0)	6 (2.1)	4 (1.1)	11 (2.0)	23 (3.0)	57 (3.8)	127 (4.7)								
	2022	208 (3.4)	0 (0.0)	0 (0.0)	4 (1.0)	7 (2.8)	6 (2.0)	8 (1.6)	19 (2.9)	46 (3.2)	118 (4.7)								
女 Females	2004	335 (3.2)	0 (0.0)	4 (2.2)	9 (0.7)	7 (0.6)	3 (0.4)	12 (1.2)	33 (2.4)	121 (5.3)	146 (5.5)								
	2005	316 (3.1)	0 (0.0)	1 (0.6)	6 (0.5)	14 (1.3)	10 (1.5)	18 (2.0)	30 (2.5)	97 (4.5)	140 (5.3)								
	2006	307 (3.3)	1 (4.0)	0 (0.0)	7 (0.7)	7 (0.7)	4 (0.6)	8 (1.0)	29 (2.8)	95 (4.6)	156 (6.1)								
	2007	352 (3.9)	0 (0.0)	0 (0.0)	4 (0.4)	7 (0.7)	9 (1.4)	10 (1.4)	30 (2.9)	114 (5.9)	178 (6.7)								
	2008	329 (3.6)	1 (3.3)	0 (0.0)	4 (0.4)	6 (0.6)	4 (0.6)	14 (2.0)	25 (2.4)	97 (5.2)	178 (6.4)								
	2009	393 (4.3)	3 (10.7)	1 (0.8)	4 (0.5)	8 (0.8)	7 (1.0)	17 (2.3)	42 (4.2)	107 (5.9)	204 (6.7)								
	2010	366 (4.2)	0 (0.0)	0 (0.0)	4 (0.6)	9 (1.0)	3 (0.5)	9 (1.5)	40 (4.0)	85 (4.9)	216 (7.3)								
	2011	412 (4.7)	0 (0.0)	2 (2.0)	6 (0.9)	7 (0.8)	11 (1.7)	9 (1.5)	24 (2.5)	89 (5.2)	264 (8.5)								
	2012	365 (4.4)	0 (0.0)	1 (1.2)	0 (0.0)	3 (0.4)	3 (0.5)	6 (1.2)	20 (2.3)	101 (6.1)	231 (7.1)								
	2013	401 (5.0)	0 (0.0)	2 (2.2)	7 (1.2)	7 (1.2)	8 (1.4)	11 (2.1)	25 (3.0)	99 (6.4)	242 (7.4)								
	2014	393 (5.2)	1 (6.3)	1 (1.1)	4 (0.7)	8 (1.4)	5 (0.9)	14 (2.8)	12 (1.6)	67 (4.9)	281 (8.7)								
	2015	400 (5.6)	0 (0.0)	1 (1.2)	5 (1.0)	1 (0.2)	5 (1.0)	6 (1.4)	16 (2.5)	88 (6.8)	278 (8.8)								
	2016	387 (5.5)	0 (0.0)	0 (0.0)	3 (0.6)	5 (1.1)	5 (1.0)	12 (2.9)	24 (3.8)	75 (6.4)	263 (8.1)								
	2017	423 (6.4)	2 (13.3)	1 (1.6)	5 (0.9)	7 (1.5)	6 (1.3)	7 (1.8)	18 (3.1)	63 (5.9)	314 (10.4)								
	2018	358 (5.7)	1 (10.0)	0 (0.0)	4 (0.7)	2 (0.5)	5 (1.3)	5 (1.3)	15 (3.0)	64 (6.0)	262 (8.9)								
	2019	395 (6.7)	1 (6.7)	1 (1.5)	3 (0.6)	6 (1.7)	3 (0.7)	6 (1.7)	19 (4.1)	56 (6.1)	300 (10.4)								
	2020	397 (7.6)	0 (0.0)	0 (0.0)	9 (1.9)	3 (0.9)	4 (1.3)	8 (2.5)	12 (3.3)	64 (7.3)	297 (12.0)								
	2021	335 (7.0)	1 (10.0)	0 (0.0)	6 (1.4)	5 (1.6)	3 (1.0)	8 (2.7)	14 (4.5)	49 (6.7)	249 (10.5)								
	2022	319 (7.6)	0 (0.0)	0 (0.0)	3 (0.8)	4 (1.6)	3 (1.2)	3 (1.3)	15 (5.5)	51 (7.9)	240 (11.5)								

注1: 他結核病類との重複あり。 Note1: Cases having multiple organs are counted independently.

注2: 割合は各年齢階層新登録患者数に対する割合。 Note2: % indicate proportion out of the total number of newly notified tuberculosis cases for each age group.

【外国生まれ】

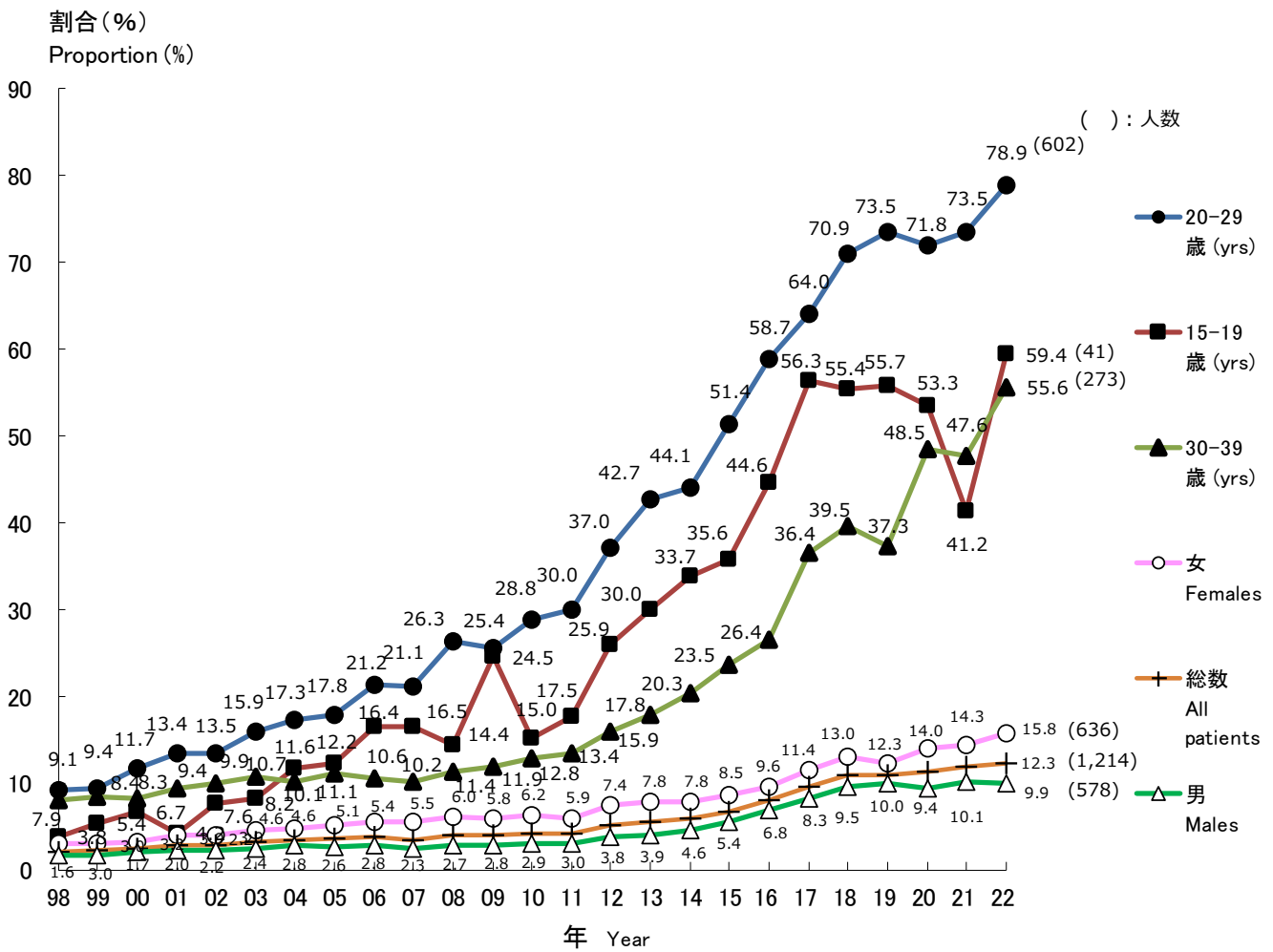


図 3 新登録結核患者に占める外国生まれ結核患者割合の推移、性別・特定年齢階層別、1998～2022年

Fig. 3 Annual trend of proportion of foreign-borns among newly notified tuberculosis patients, by sex and age group, from 1998 to 2022

割合：出生国不明を除く。

Those whose country of birth is unknown are excluded from the numerator.

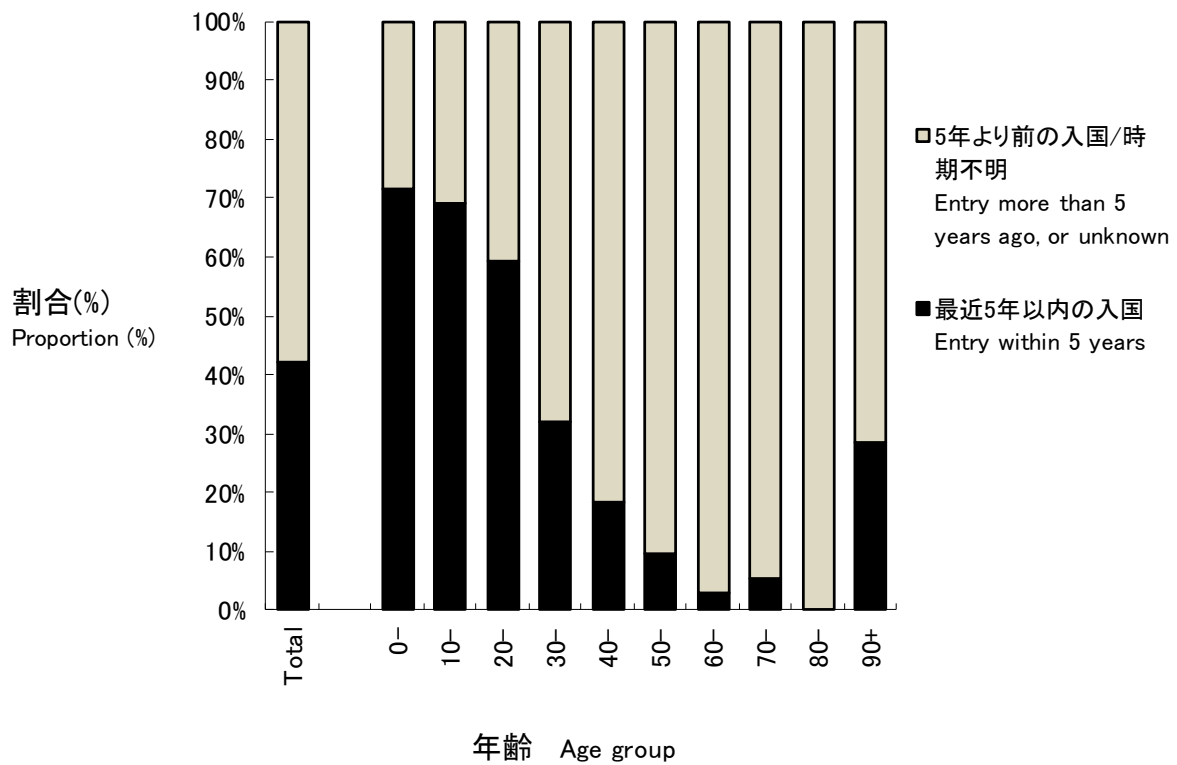


図 4 外国生まれ結核患者の入国時期別割合、年齢階層別、2022年
 Fig. 4 Proportion of foreign-born tuberculosis patients, by age group and time of entry to Japan, in 2022

表 4.1 新登録全結核患者の発生動向年次推移, 国籍または出生国別, 性別, 1998~2022年
 Table 4.1 Annual trend of newly notified tuberculosis patients by nationality or country of birth, and by sex, from 1998 to 2022

暦年 Year	新登録全結核 患者数 Number of newly notified tuberculosis patients, all forms	日本生まれ Born in Japan	外国籍もしくは 外国生まれ Foreign nationalities or Foreign borns (*1)	国籍または 出生国不明 Nationalities or country of birth unknown	外国生まれ 割合 (%) Proportion of foreign borns (%)(*2)	性 Sex (*3)		女-男比 Ratio of Females to Males
						男 Males	女 Females	
1998	41,033	34,382	739	5,912	2.1	365	374	1.0
1999	43,818	37,094	821	5,903	2.2	415	406	1.0
2000	39,384	33,720	837	4,827	2.4	436	401	0.9
2001	35,489	30,305	866	4,318	2.8	442	424	1.0
2002	32,828	28,667	824	3,337	2.8	411	413	1.0
2003	31,638	27,665	906	3,067	3.2	433	473	1.1
2004	29,736	26,205	931	2,600	3.4	479	452	0.9
2005	28,319	25,247	923	2,149	3.5	438	485	1.1
2006	26,384	23,505	920	1,959	3.8	444	476	1.1
2007	25,311	23,451	842	1,018	3.5	364	478	1.3
2008	24,760	23,163	945	652	3.9	416	529	1.3
2009	24,170	22,808	938	424	4.0	414	524	1.3
2010	23,261	21,976	952	333	4.2	424	528	1.2
2011	22,681	21,372	921	388	4.1	416	505	1.2
2012	21,283	19,555	1,069	659	5.2	474	595	1.3
2013	20,495	18,589	1,064	842	5.4	468	596	1.3
2014	19,615	17,727	1,101	787	5.8	531	570	1.1
2015	18,280	16,396	1,164	720	6.6	581	583	1.0
2016	17,625	15,504	1,338	783	7.9	693	645	0.9
2017	16,789	14,533	1,530	726	9.5	804	726	0.9
2018	15,590	13,570	1,667	353	10.9	860	807	0.9
2019	14,460	12,567	1,541	352	10.9	829	712	0.9
2020	12,739	11,080	1,411	248	11.3	692	719	1.0
2021	11,519	9,809	1,313	397	11.8	655	658	1.0
2022	10,235	8,673	1,214	348	12.3	578	636	1.1

*1: 2011年までは外国籍結核患者数、2012年以降外国生まれ結核患者数。

Number of tuberculosis patients with foreign nationalities until 2011, number of foreign-born patients afterwards.

*2: 2011年までは外国籍患者割合、2012年以降外国生まれ患者割合(国籍または出生国不明を除く)。

Proportion of Tuberculosis patients with foreign nationalities until 2011, proportion of foreign-born patients afterwards, excluding those of unknown nationality or country of birth.

*3: 外国籍または外国生まれにおける性別。Sex distribution among foreign nationalities or foreign-borns.

表 4.2 新登録外国人結核患者数・割合、年齢階層別、1998～2022年

Table 4.2 Annual trend of foreign-borns by age group, 1998-2022

年 year	年齢 Age group	0～9歳 0-9 yrs		10～19歳 10-19 yrs		20～29歳 20-29 yrs		30～39歳 30-39 yrs		40～49歳 40-49 yrs		50～59歳 50-59 yrs		60～69歳 60-69 yrs		70～79歳 70-79 yrs		80歳以上 80 yrs+	
		総数 Total	数n 割合(%)	数n 割合(%)	数n 割合(%)	数n 割合(%)	数n 割合(%)	数n 割合(%)	数n 割合(%)	数n 割合(%)	数n 割合(%)	数n 割合(%)	数n 割合(%)	数n 割合(%)	数n 割合(%)	数n 割合(%)	数n 割合(%)	数n 割合(%)	
1998	739	6	(0.8)	20	(2.7)	300	(40.6)	215	(29.1)	83	(11.2)	44	(6.0)	23	(3.1)	29	(3.9)	19	(2.6)
1999	821	11	(1.3)	27	(3.3)	319	(38.9)	241	(29.4)	89	(10.8)	54	(6.6)	27	(3.3)	35	(4.3)	18	(2.2)
2000	837	14	(1.7)	26	(3.1)	357	(42.7)	235	(28.1)	92	(11.0)	49	(5.9)	23	(2.7)	27	(3.2)	14	(1.7)
2001	866	4	(0.5)	17	(2.0)	361	(41.7)	249	(28.8)	110	(12.7)	55	(6.4)	27	(3.1)	25	(2.9)	18	(2.1)
2002	824	5	(0.6)	24	(2.9)	345	(41.9)	249	(30.2)	81	(9.8)	47	(5.7)	26	(3.2)	24	(2.9)	23	(2.8)
2003	906	9	(1.0)	25	(2.8)	399	(44.0)	268	(29.6)	98	(10.8)	38	(4.2)	22	(2.4)	27	(3.0)	20	(2.2)
2004	931	4	(0.4)	32	(3.4)	402	(43.2)	250	(26.9)	107	(11.5)	59	(6.3)	28	(3.0)	27	(2.9)	22	(2.4)
2005	923	5	(0.5)	37	(4.0)	378	(41.0)	273	(29.6)	105	(11.4)	62	(6.7)	26	(2.8)	16	(1.7)	21	(2.3)
2006	920	5	(0.5)	34	(3.7)	409	(44.5)	234	(25.4)	113	(12.3)	59	(6.4)	35	(3.8)	11	(1.2)	20	(2.2)
2007	842	6	(0.7)	35	(4.2)	390	(46.3)	224	(26.6)	102	(12.1)	43	(5.1)	15	(1.8)	12	(1.4)	15	(1.8)
2008	945	4	(0.4)	27	(2.9)	468	(49.5)	237	(25.1)	114	(12.1)	41	(4.3)	25	(2.6)	10	(1.1)	19	(2.0)
2009	938	2	(0.2)	50	(5.3)	427	(45.5)	243	(25.9)	103	(11.0)	41	(4.4)	30	(3.2)	20	(2.1)	22	(2.3)
2010	952	5	(0.5)	41	(4.3)	438	(46.0)	242	(25.4)	114	(12.0)	39	(4.1)	35	(3.7)	18	(1.9)	20	(2.1)
2011	921	5	(0.5)	30	(3.3)	419	(45.5)	226	(24.5)	126	(13.7)	53	(5.8)	20	(2.2)	19	(2.1)	23	(2.5)
2012	1,069	4	(0.4)	45	(4.2)	468	(43.8)	237	(22.2)	181	(16.9)	63	(5.9)	33	(3.1)	17	(1.6)	21	(2.0)
2013	1,064	3	(0.3)	52	(4.9)	494	(46.4)	225	(21.1)	147	(13.8)	65	(6.1)	30	(2.8)	25	(2.3)	23	(2.2)
2014	1,101	5	(0.5)	59	(5.4)	511	(46.4)	243	(22.1)	151	(13.7)	71	(6.4)	26	(2.4)	16	(1.5)	19	(1.7)
2015	1,164	3	(0.3)	63	(5.4)	565	(48.5)	252	(21.6)	134	(11.5)	74	(6.4)	27	(2.3)	19	(1.6)	27	(2.3)
2016	1,338	5	(0.4)	89	(6.7)	712	(53.2)	258	(19.3)	139	(10.4)	66	(4.9)	33	(2.5)	15	(1.1)	21	(1.6)
2017	1,530	5	(0.3)	87	(5.7)	774	(50.6)	349	(22.8)	143	(9.3)	89	(5.8)	48	(3.1)	17	(1.1)	18	(1.2)
2018	1,667	4	(0.2)	95	(5.7)	896	(53.7)	344	(20.6)	151	(9.1)	91	(5.5)	35	(2.1)	23	(1.4)	28	(1.7)
2019	1,541	7	(0.5)	81	(5.3)	851	(55.2)	283	(18.4)	147	(9.5)	76	(4.9)	41	(2.7)	27	(1.8)	28	(1.8)
2020	1,411	6	(0.4)	43	(3.0)	732	(51.9)	330	(23.4)	141	(10.0)	83	(5.9)	44	(3.1)	19	(1.3)	13	(0.9)
2021	1,313	3	(0.2)	43	(3.3)	675	(51.4)	276	(21.0)	135	(10.3)	94	(7.2)	43	(3.3)	16	(1.2)	28	(2.1)
2022	1,214	7	(0.6)	42	(3.5)	602	(49.6)	273	(22.5)	125	(10.3)	84	(6.9)	33	(2.7)	19	(1.6)	29	(2.4)

注1:割合は新登録外国人結核患者総数に対する各年齢階層患者数の割合

Note1: % indicate proportion out of the total number of newly notified foreign-born tuberculosis cases for each age group.

注2: 2011年までは外国国籍患者数。2012年以降は外国生まれ患者数

Note2: "Foreign nationalities" until 2011, "Foreign-born" since 2012.

表 5 外国生まれ結核患者及び薬剤耐性結核の数および割合, 出生国別, 入国時期別 2022年
Table 5 Number and proportion of foreign-born tuberculosis patients by country of birth and time of entry to Japan, 2022

総数 Total	薬剤耐性 Drug resistance								最近5年以内入国 Entry within 5 years	薬剤耐性 Drug resistance											
	n (%)		多剤耐性 MDR	INH 耐性 INH resistance	Any RFP耐性 Any RFP resistance	1 剤以上耐性 Any resistance*	n (%)			多剤耐性 MDR	INH 耐性 Any INH resistance	RFP耐性 RFP resistance	Any 1 剤以上耐性 Any resistance*								
	n	(%)					n	(%)													
総数 Total	1,214	(100.0)	16	(100.0)	56	(100.0)	22	(100.0)	91	(100.0)	総数 Total	513	(100.0)	9	(100.0)	25	(100.0)	11	(100.0)	43	(100.0)
フィリピン Philippines	252	(20.8)	1	(6.3)	12	(21.4)	2	(9.1)	14	(15.4)	ベトナム Vietnam	111	(21.6)	5	(20.0)	1	(9.1)	11	(25.6)		
ベトナム Vietnam	188	(15.5)			8	(14.3)	1	(4.5)	17	(18.7)	インドネシア Indonesia	108	(21.1)	1	(11.1)	4	(16.0)	1	(9.1)	5	(11.6)
インドネシア Indonesia	177	(14.6)	1	(6.3)	6	(10.7)	1	(4.5)	7	(7.7)	ネパール Nepal	74	(14.4)	1	(11.1)	3	(12.0)	1	(9.1)	4	(9.3)
ネパール Nepal	138	(11.4)	2	(12.5)	4	(7.1)	2	(9.1)	6	(6.6)	フィリピン Philippines	65	(12.7)	1	(11.1)	3	(12.0)	2	(18.2)	4	(9.3)
中国 China	134	(11.0)	7	(43.8)	13	(23.2)	10	(45.5)	25	(27.5)	ミャンマー Myanmar	49	(9.6)	1	(11.1)	3	(12.0)	1	(9.1)	5	(11.6)
ミャンマー Myanmar	99	(8.2)	3	(18.8)	6	(10.7)	4	(18.2)	9	(9.9)	中国 China	44	(8.6)	4	(44.4)	5	(20.0)	4	(36.4)	10	(23.3)
韓国 Republic of Korea	25	(2.1)	1	(6.3)	4	(7.1)	1	(4.5)	5	(5.5)	モンゴル Mongolia	12	(2.3)			1	(4.0)			1	(2.3)
インド India	23	(1.9)									その他 Others	41	(8.0)	1	(11.1)	1	(4.0)	1	(9.1)	3	(7.0)
タイ Thailand	23	(1.9)	1	(6.3)	1	(1.8)	1	(4.5)	1	(1.1)	国名不明 Unknown	9	(1.8)								
モンゴル Mongolia	17	(1.4)			1	(1.8)			1	(1.1)											
ペルー Peru	13	(1.1)							1	(1.1)											
ブラジル Brazil	10	(0.8)			1	(1.8)			1	(1.1)											
カンボジア Cambodia	10	(0.8)							1	(1.1)											
その他 Others	49	(4.0)							2	(2.2)											
国名不明 Unknown	56	(4.6)							1	(1.1)											

国名: 10名以上患者発生届けのあった国名を掲載 Only those countries with more than ten tuberculosis cases are listed.

MDR: Multi-drug resistant, i.e., resistant to at least INH and RFP INH: isoniazid RFP: rifampicin

*: INH, RFP, SM EBの4剤のうちのいずれかに耐性 resistant to either INH, RFP, SM, or EB

5年以上前入国/時期不明 Entry more than 5 years ago, or unknown	薬剤耐性 Drug resistance									
	n (%)		多剤耐性 MDR	INH 耐性 Any INH resistance	RFP耐性 Any RFP resistance	1 剤以上耐性 Any resistance*	n (%)			
	n	(%)					n	(%)		
総数 Total	701	(100.0)	7	(100.0)	31	(100.0)	11	(100.0)	48	(100.0)
フィリピン Philippines	187	(26.7)			9	(29.0)			10	(20.8)
中国 China	90	(12.8)	3	(42.9)	8	(25.8)	6	(54.5)	15	(31.3)
ベトナム Vietnam	77	(11.0)			3	(9.7)			6	(12.5)
インドネシア Indonesia	69	(9.8)			2	(6.5)			2	(4.2)
ネパール Nepal	64	(9.1)	1	(14.3)	1	(3.2)	1	(9.1)	2	(4.2)
ミャンマー Myanmar	50	(7.1)	2	(28.6)	3	(9.7)	3	(27.3)	4	(8.3)
韓国 Republic of Korea	23	(3.3)	1	(14.3)	4	(12.9)	1	(9.1)	5	(10.4)
インド India	16	(2.3)								
タイ Thailand	15	(2.1)								
ペルー Peru	11	(1.6)							1	(2.1)
その他 Others	52	(7.4)			1	(3.2)			2	(4.2)
国名不明 Unknown	47	(6.7)							1	(2.1)

表 6 職業分類別外国生まれ結核患者数、性別・年齢階層別、2022年
Table 6 Occupation of foreign-born tuberculosis patients by sex and age group, in Japan, in 2022

年齢 Age group	総数 Total	接客業 Service trade workers	医療職 Health care workers	教員・ 保育士 Teacher s/ Nursery staff	乳幼児 ・児童 Infants / Children	生徒・ 学生 Student s	他常用 勤 労者 Other regular employe es	他臨時 雇 ・日雇 Other temporar y/day laborer	他自営・ 自由業 Other self- employe d	家事 従業者 Houseke epers	無職・ その他 Unemplo -yed/ Others	不明 Unknow n
		(%)	(%)	(%)	(%)	(%)	(%)	(%)	(%)	(%)	(%)	(%)
総数 Total	1,214 (100)	46 (4)	66 (5)	9 (1)	8 (1)	202 (17)	430 (35)	102 (8)	18 (1)	14 (1)	273 (22)	46 (4)
男 Males	578 (100)	18 (3)	16 (3)	1 (0)	1 (0)	102 (18)	258 (45)	40 (7)	7 (1)	1 (0)	119 (21)	15 (3)
女 Females	636 (100)	28 (4)	50 (8)	8 (1)	7 (1)	100 (16)	172 (27)	62 (10)	11 (2)	13 (2)	154 (24)	31 (5)
0-14	8 (100)	0 -	0 -	0 -	8 (100)	0 -	0 -	0 -	0 -	0 -	0 -	0 -
15-19	41 (100)	0 -	0 -	0 -	0 (0)	28 (68)	6 -	0 -	1 (2)	0 -	6 (15)	0 -
20-24	303 (100)	7 (2)	13 (4)	0 -	0 (0)	110 (36)	94 (31)	21 (7)	2 (1)	0 -	50 (17)	6 (2)
25-29	299 (100)	8 (3)	29 (10)	2 (1)	0 (0)	48 (16)	123 (41)	23 (8)	2 (1)	1 -	55 (18)	8 (3)
30-34	170 (100)	6 (4)	9 (5)	3 (2)	0 (0)	13 (8)	79 (46)	18 (11)	2 (1)	2 (1)	28 (16)	10 (6)
35-39	103 (100)	8 (8)	5 (5)	0 -	0 (0)	2 (2)	42 (41)	8 (8)	4 (4)	6 (6)	23 (22)	5 (5)
40-44	68 (100)	5 (7)	4 (6)	0 -	0 (0)	0 (0)	33 (49)	10 (15)	2 (3)	0 -	9 (13)	5 (7)
45-49	57 (100)	6 (11)	0 -	2 (4)	0 (0)	0 (0)	21 (37)	8 (14)	1 (2)	0 -	13 (23)	6 (11)
50-54	43 (100)	3 (7)	4 (9)	0 -	0 (0)	1 (2)	10 (23)	5 (12)	1 (2)	1 (2)	15 (35)	3 (7)
55-59	41 (100)	0 -	1 (2)	1 (2)	0 (0)	0 (0)	13 (32)	5 (12)	1 (2)	4 (10)	15 (37)	1 (2)
60+	81 (100)	3 (4)	1 (1)	1 (1)	0 (0)	0 (0)	9 (11)	4 (5)	2 (2)	0 -	59 (73)	2 (2)

旧表 外国人新登録結核患者の発生動向, 暦年別, 年齢階層別, 1998~2022年
Previous table Trend of newly notified foreign nationals with TB by year and age group, 1998-2022

暦年 Year	外国人 All foreigners	年齢 Age group							20歳代割 合(%)
		0-14	15-19	20-29	30-39	40-49	50-59	60+	Percentage of 20-29 yrs in total
1998	739	11	15	300	215	83	44	71	40.6
1999	821	13	25	319	241	89	54	80	38.9
2000	837	16	24	357	235	92	49	64	42.7
2001	866	6	15	361	249	110	55	70	41.7
2002	824	6	23	345	249	81	47	73	41.9
2003	906	12	22	399	268	98	38	69	44.0
2004	931	6	30	402	250	107	59	77	43.2
2005	923	9	33	378	273	105	62	63	41.0
2006	920	6	33	409	234	113	59	66	44.5
2007	842	9	32	390	224	102	43	42	46.3
2008	945	5	26	468	237	114	41	54	49.5
2009	938	3	49	427	243	103	41	72	45.5
2010	952	9	37	438	242	114	39	73	46.0
2011	921	8	27	419	226	126	53	62	45.5
2012	1,069	7	42	468	237	181	63	71	43.8
2013	1,064	7	48	494	225	147	65	78	46.4
2014	1,101	8	56	511	243	151	71	61	46.4
2015	1,164	9	57	565	252	134	74	73	48.5
2016	1,338	12	82	712	258	139	66	69	53.2
2017	1,530	11	81	774	349	143	89	83	50.6
2018	1,667	12	87	896	344	151	91	86	53.7
2019	1,541	10	78	851	283	147	76	96	55.2
2020	1,411	9	40	732	330	141	83	76	51.9
2021	1,313	6	40	675	276	135	94	87	51.4
2022	1,214	8	41	602	273	125	84	81	49.6

2011年までは外国籍結核患者数、2012年以降外国生まれ結核患者数

Number of tuberculosis patients with foreign nationalities until 2011, number of foreign-born patients afterwards.

旧表 都道府県・政令指定都市別外国人結核患者数, 2022年
Previous table Distribution of foreign nationals with tuberculosis by prefecture and designated city, 2022

		新登録患者数	外国生まれ	割合
		Newly notified patients	Foreign born	Proportion (%)
全国	Japan	10,235	1,214	11.9
群馬県	Gunma	112	34	30.4
福岡市	Fukuoka city	143	37	25.9
浜松市	Hamamatsu city	60	14	23.3
愛知県	Aichi	441	101	22.9
香川県	Kagawa	80	18	22.5
栃木県	Tochigi	112	24	21.4
静岡県	Sizuoka	127	27	21.3
広島県	Hiroshima	104	22	21.2
山梨県	Yamanashi	51	10	19.6
岐阜県	Gifu	196	35	17.9
三重県	Mie	139	22	15.8
茨城県	Ibaraki	248	39	15.7
岡山市	Okayama city	45	7	15.6
千葉県	Chiba	399	60	15.0
福島県	Fukushima	82	12	14.6
沖縄県	Okinawa	124	17	13.7
大阪市	Osaka city	480	65	13.5
東京都	Tokyo	1193	158	13.2
名古屋市	Nagoya city	283	37	13.1
静岡市	Shizuoka city	54	7	13.0
滋賀県	Shiga	116	15	12.9
富山県	Toyama	65	8	12.3
神奈川県	Kanagawa	238	29	12.2
埼玉県	Saitama	461	55	11.9
岩手県	Iwate	60	7	11.7
千葉市	Chiba city	95	11	11.6
山口県	Yamaguchi	116	13	11.2
川崎市	Kawasaki city	127	14	11.0
さいたま市	Saitama city	96	10	10.4
相模原市	Sagamihara city	48	5	10.4
佐賀県	Saga	59	6	10.2
石川県	Ishikawa	79	8	10.1
横浜市	Yokohama city	288	29	10.1
福岡県	Fukuoka	191	19	9.9
広島市	Hiroshima city	91	9	9.9
北九州市	Kitakyushu city	103	10	9.7
京都市	Kyoto city	144	13	9.0
熊本県	Kumamoto	91	8	8.8
岡山県	Okayama	103	9	8.7
山形県	Yamagata	48	4	8.3
神戸市	Kobe city	148	12	8.1
仙台市	Sendai city	65	5	7.7
大分県	Oita	119	9	7.6
鹿児島県	Kagosima	133	10	7.5
兵庫県	Hyougo	382	28	7.3
熊本市	Kumamoto city	55	4	7.3
愛媛県	Ehime	98	7	7.1
新潟市	Niigata city	43	3	7.0
青森県	Aomori	90	6	6.7
長野県	Nagano	105	7	6.7
宮城県	Miyagi	62	4	6.5

外国人患者が6.0%以上(国籍不明を含む)の県・市を掲載。政令指定都市は県に含まず(別掲)
Those prefectures and designated cities with 6% or more tuberculosis cases with foreign nationals are listed.

The figures of prefectures do not include those cases registered to designated cities in the respective prefecture, if applicable.

E.g., the figure of Kanagawa prefecture does not include those of Yokohama and Kawasaki cities.