

【Childhood】

Table 1 Number and rates of childhood tuberculosis patients and specific extra-pulmonary tuberculosis, 1965–2022

Year	Newly notified tuberculosis aged 0–14 yrs		No. of meningeal tuberculosis		No. of miliary tuberculosis	
	Number	Rate	0–14 yrs	0–4 yrs (Rate)	0–14 yrs	0–4 yrs (Rate)
1965	44,180	175.6	—	—	—	—
1970	18,197	73.4	—	—	—	—
1975	4,905	18.0	28	22 (0.221)	—	—
1980	1,893	6.9	22	14 (0.164)	—	—
1985	1,088	4.2	—	—	—	—
1990	518	2.3	9	4 (0.061)	10	8 (0.122)
1995	340	1.7	8	8 (0.136)	8	8 (0.136)
2000	220	1.2	7	4 (0.069)	3	3 (0.052)
2005	117	0.7	3	1 (0.018)	3	1(0.018)
2010	89	0.5	0	0	0	0
2011	84	0.5	1	0	2	1(0.019)
2012	63	0.4	1	1(0.019)	0	0
2013	66	0.4	2	2(0.038)	0	0
2014	49	0.3	5	2(0.038)	2	1(0.019)
2015	51	0.3	1	1(0.020)	1	0
2016	59	0.4	2	2(0.040)	1	1(0.020)
2017	59	0.4	2	1(0.020)	3	3(0.061)
2018	51	0.3	1	1(0.021)	1	1(0.021)
2019	38	0.2	0	0	3	2(0.042)
2020	52	0.3	1	1(0.022)	1	1(0.022)
2021	29	0.2	0	0	1	1(0.023)
2022	35	0.2	0	0	0	0

Extra-pulmonary tuberculosis: Cases are counted independently.

Rate: per 100,000

—: Not available

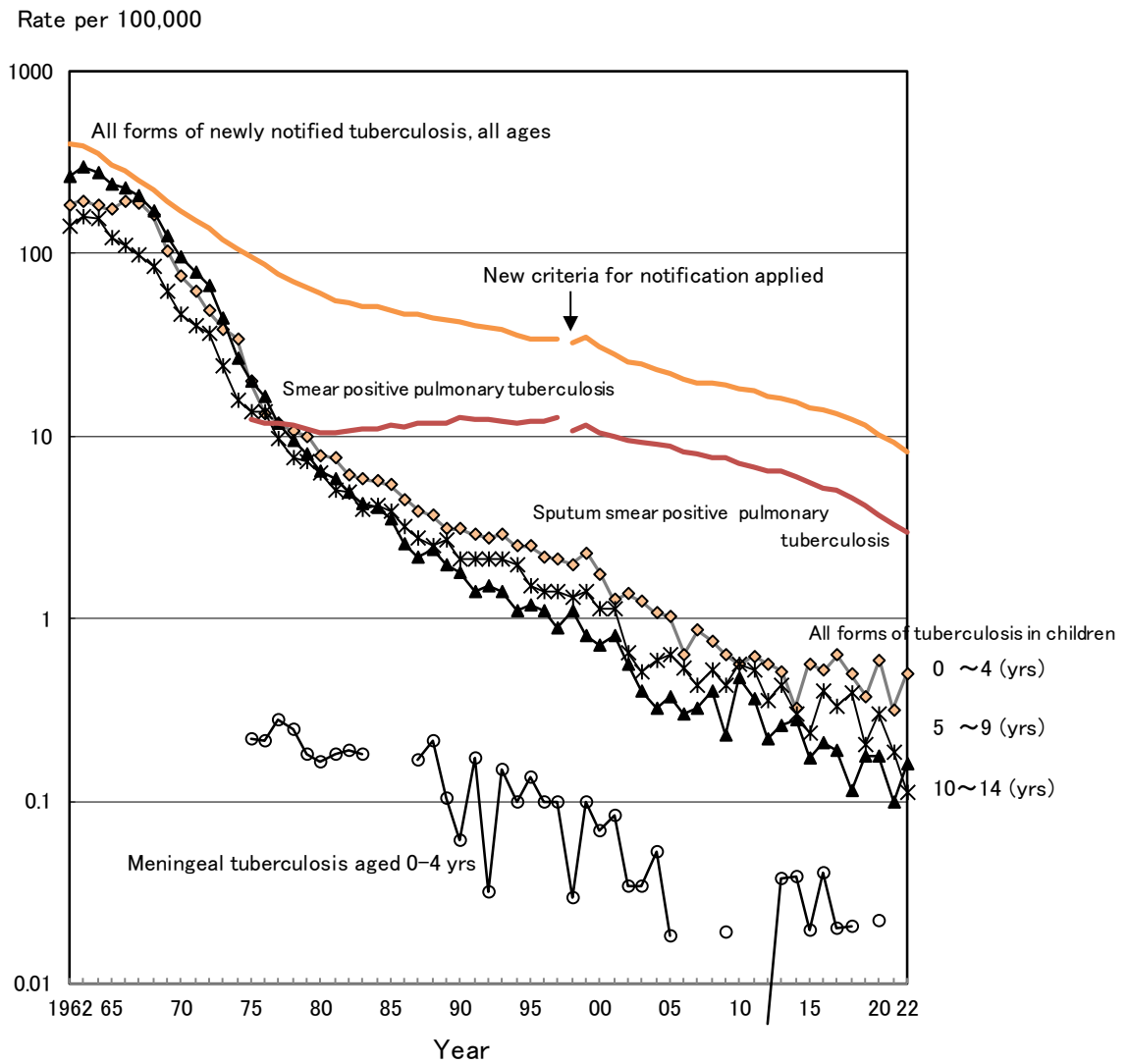


Fig. 1 Trend of childhood tuberculosis notification rates, per 100,000 population, 1962–2022

Table 2 Number of newly notified childhood tuberculosis patients by age and mode of detection, 2022

	Age (yrs)															Total
	0	1	2	3	4	5	6	7	8	9	10	11	12	13	14	
School mass-investigation	-	-	-	-	-	-	-	-	-	-	-	-	-	-	-	-
Family contact investigation	3	1	2	1	3	3	1	-	-	-	1	-	1	1	2	19
Other contact investigation	-	-	-	-	-	-	-	-	-	-	-	-	-	-	-	-
At clinics/hospitals (with symptoms)	6	3	1	-	-	1	-	1	-	2	-	-	-	1	-	15
Others	1	-	-	-	-	-	-	-	-	-	-	-	-	-	-	1
Total	10	4	3	1	3	4	1	1	-	2	1	-	1	2	2	35

Table 3 Proportion of BCG vaccinated cases among newly notified childhood tuberculosis patients and LTBI cases, 2022

	Age in years										5-9	10-14	Total
	Age in months					0	1	2	3	4			
	0-2	3-5	6-8	9-11	Total								
Tuberculosis cases	2	3	3	2	10	4	3	1	3	21	8	6	35
BCG vaccinated	0	0	1	1	2	1	0	1	2	6	1	1	8
BCG not vaccinated	2	1	0	1	4	0	0	0	0	4	3	1	8
BCG unknown	0	2	2	0	4	3	3	0	1	11	4	4	19
BCG vaccinated (%)*	0.0	0.0	100.0	50.0	33.3	100.0		100.0	100.0	60.0	25.0	50.0	50.0
LTBI	6	60	149	16	231	17	12	8	11	279	42	33	354
BCG vaccinated	0	38	106	8	152	11	5	7	7	182	24	5	211
BCG not vaccinated	3	5	2	0	10	0	1	0	0	11	0	2	13
BCG unknown	3	17	41	8	69	6	6	1	4	86	18	26	130
BCG vaccinated (%)*	0.0	88.4	98.1	100.0	93.8	100.0	83.3	100.0	100.0	94.3	100.0	71.4	94.2

LTBI : Latent Tuberculosis Infection

*%: Proportion of BCG vaccinated cases among all TB/LTBI cases excluding BCG unknown

Previous table Trend of newly notified childhood TB patients by age and calendar year, 1998–2022

Year	Age (yrs)														Total	
	0	1	2	3	4	5	6	7	8	9	10	11	12	13		14
1998	31	39	15	18	16	12	18	14	13	10	7	7	29	18	27	274
1999	43	35	24	23	9	10	15	8	7	10	8	9	27	27	25	280
2000	29	27	19	14	14	8	10	13	5	7	14	11	21	12	16	220
2001	27	18	14	9	7	4	14	11	11	8	8	4	23	18	19	195
2002	30	21	14	12	3	9	8	5	6	6	2	3	14	15	7	155
2003	23	15	17	5	12	9	5	4	1	5	4	3	4	10	10	127
2004	20	18	9	5	10	5	2	3	5	4	3	4	12	6	11	117
2005	23	11	5	13	4	4	3	7	5	3	6	5	7	13	8	117
2006	9	6	8	6	6	6	3	3	2	4	3	4	3	13	9	85
2007	21	5	7	12	2	6	5	2	4	2	2	4	4	7	9	92
2008	11	14	11	4	1	2	6	2	5	8	2	5	7	8	9	95
2009	15	8	6	3	2	4	4	1	3	1	6	1	5	8	6	73
2010	10	6	5	5	4	6	6	8	3	3	5	4	4	7	13	89
2011	5	7	6	7	8	3	7	3	3	4	6	4	5	5	11	84
2012	8	6	6	7	3	2	2	3	1	4	3	2	3	7	6	63
2013	7	4	5	4	7	3	3	2	1	5	3	4	7	3	8	66
2014	5	8	–	2	2	1	6	1	3	4	–	3	3	7	4	49
2015	13	5	5	2	4	1	–	–	6	2	–	4	4	3	2	51
2016	10	8	1	2	5	1	2	–	4	4	3	3	–	6	10	59
2017	12	6	6	2	5	3	2	2	–	3	2	4	2	5	5	59
2018	14	2	2	5	1	1	1	–	2	2	5	2	3	3	8	51
2019	14	1	1	–	2	2	3	–	3	1	1	1	3	2	4	38
2020	16	6	2	1	2	1	3	1	1	3	6	2	4	2	2	52
2021	6	5	2	1	–	–	1	1	2	1	–	3	4	1	2	29
2022	10	4	3	1	3	4	1	1	–	2	1	–	1	2	2	35

School mass-examination was revised in 2003.

Upper-limitation age of BCG vaccination was changed from 4 years to 6 months, with introduction of direct vaccination policy in 2005.

Previous table Number of prefectures by number of childhood TB patients, 1980–2022

Year	Number of childhood TB patients							Total
	0	1	2~4	5~9	10~14	15~19	20+(cases)	
1980	0	0	1	6	7	4	29	47
1985	0	0	5	11	10	2	19	47
1990	0	3	13	11	8	2	10	47
1995	3	6	14	13	4	2	5	47
2000	9	8	13	10	3	1	3	47
2005	17	8	13	7	2	0	0	47
2006	19	13	8	6	1	0	0	47
2007	17	12	11	5	2	0	0	47
2008	14	12	16	4	1	0	0	47
2009	27	6	8	4	2	0	0	47
2010	15	14	14	3	0	0	1	47
2011	19	11	12	4	0	0	1	47
2012	22	11	11	3	0	0	0	47
2013	19	14	9	5	0	0	0	47
2014	22	14	9	2	0	0	0	47
2015	25	10	9	3	0	0	0	47
2016	25	10	7	5	0	0	0	47
2017	25	8	11	2	1	0	0	47
2018	26	12	6	2	1	0	0	47
2019	32	5	8	2	0	0	0	47
2020	28	9	6	4	0	0	0	47
2021	34	9	3	0	1	0	0	47
2022	34	5	7	1	0	0	0	47

[Elderly]

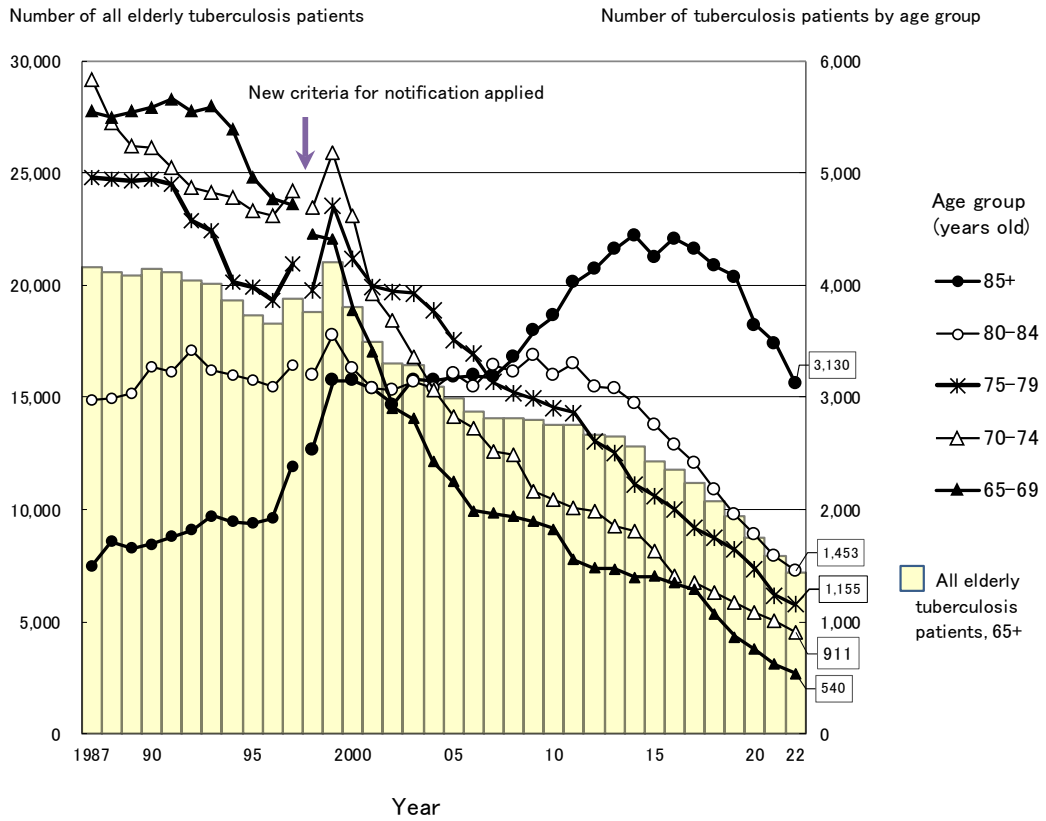


Fig.2 Annual trend of the number of newly notified elderly tuberculosis patients by age group, 1987–2022

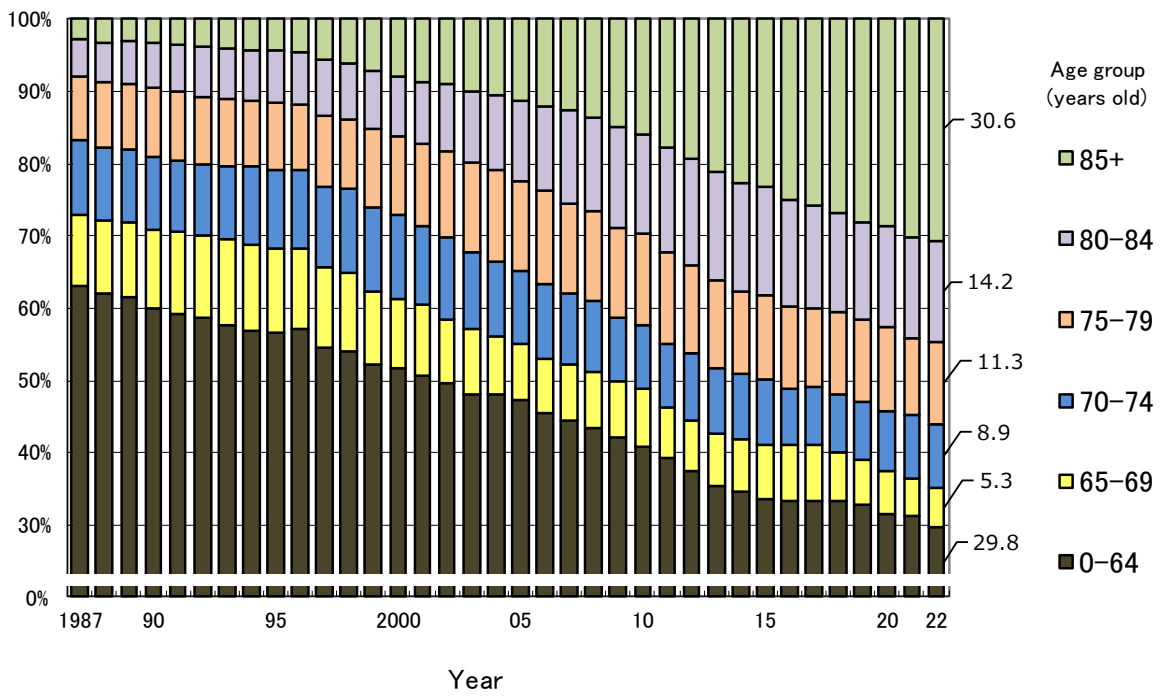


Fig.3 Annual trend of the proportion of elderly tuberculosis patients among all newly notified tuberculosis patients, 1987–2022

Rate per 100,000 population

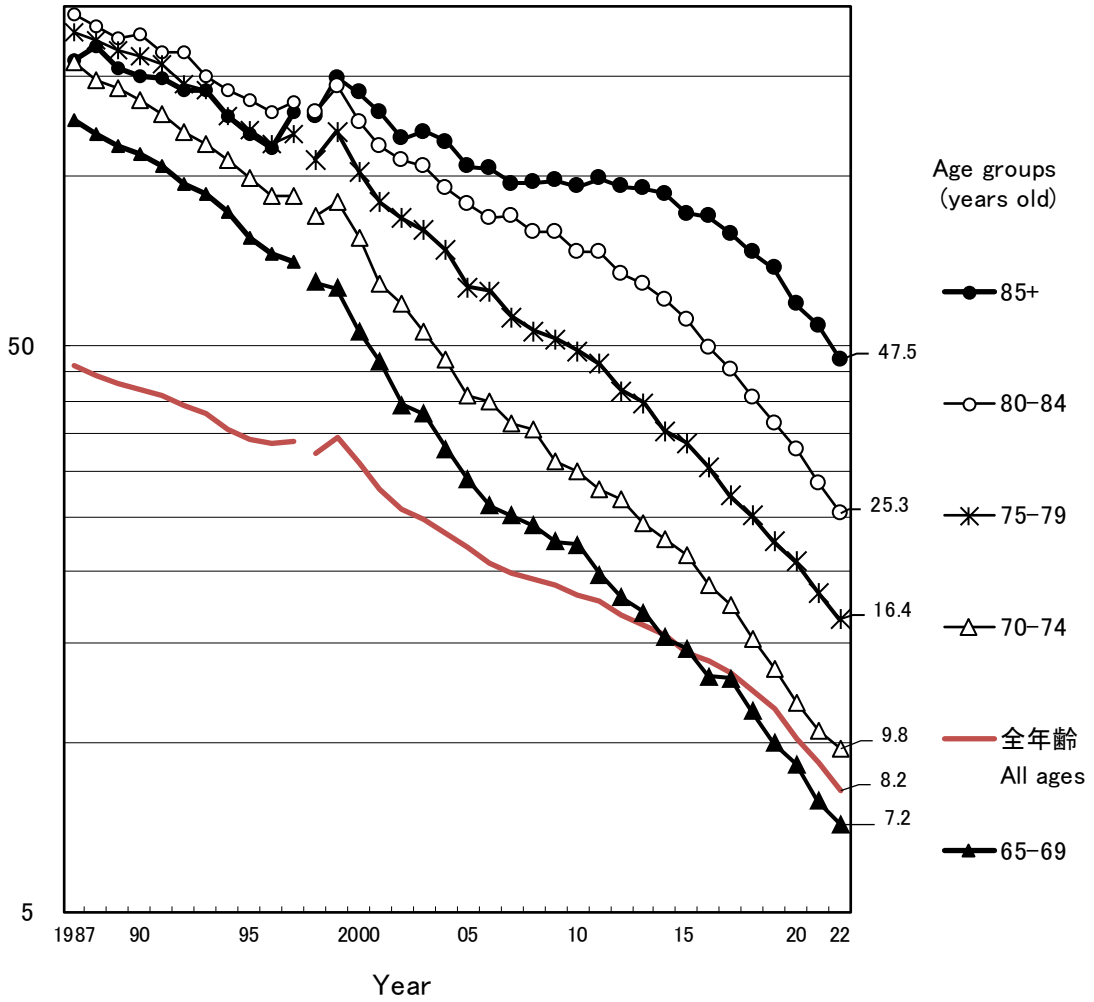


Fig.4 Annual trend of elderly tuberculosis notification rates (per 100,000 population) among the elderly elderly population, by age group, all forms, 1987-2022

Table 4 Comparison of epidemiological indicators of newly notified tuberculosis patients by sex and age group, 2022

		Age group (years old)					
		All ages	Youth and middle-aged	The elderly			
				15-64	all 65+	65-74	75-84
Number of newly notified tuberculosis patients (all forms, n)	Total	10,235	3,011	7,189	1,451	2,608	3,130
	Male	6,058	1,758	4,288	1,010	1,690	1,588
	Female	4,177	1,253	2,901	441	918	1,542
Tuberculosis notification rate (all forms, per 100,000 population)	Total	8.2	4.1	19.8	8.6	20.4	47.5
	Male	10.0	4.7	27.3	12.5	30.5	75.2
	Female	6.5	3.4	14.1	5.0	12.7	34.4
Number of newly notified extra-pulmonary tuberculosis patients (n)	Total	2,781	668	2,108	390	794	924
	Male	1,486	345	1,140	238	475	427
	Female	1,295	323	968	152	319	497
Proportion of extra-pulmonary tuberculosis patients among newly notified tuberculosis patients (%)	Total	27.2	22.2	29.3	26.9	30.4	29.5
	Male	24.5	19.6	26.6	23.6	28.1	26.9
	Female	31.0	25.8	33.4	34.5	34.7	32.2
Number of newly notified pulmonary tuberculosis patients (n)	Total	7,454	2,343	5,081	1,061	1,814	2,206
	Male	4,572	1,413	3,148	772	1,215	1,161
	Female	2,882	930	1,933	289	599	1,045
Proportion of pulmonary tuberculosis patients among newly notified tuberculosis patients (%)	Total	72.8	77.8	70.7	73.1	69.6	70.5
	Male	75.5	80.4	73.4	76.4	71.9	73.1
	Female	69.0	74.2	66.6	65.5	65.3	67.8
Proportion of bacteriologically positive tuberculosis patients among all pulmonary tuberculosis patients (%)	Total	87.6	79.1	91.8	87.7	91.0	94.6
	Male	88.2	80.3	91.9	89.2	91.1	94.4
	Female	86.7	77.2	91.8	83.4	90.7	94.7
Proportion of sputum-smear positive pulmonary tuberculosis patients among all pulmonary tuberculosis patients (%)	Total	49.7	38.8	55.0	50.0	53.7	58.4
	Male	50.3	40.1	55.1	51.0	52.9	60.2
	Female	48.6	36.8	54.7	47.1	55.3	56.5
Proportion of cavitory pulmonary tuberculosis patients among all pulmonary tuberculosis patients (%)	Total	29.1	30.4	28.6	32.3	30.2	25.4
	Male	32.3	34.3	31.6	35.0	32.4	28.5
	Female	23.9	24.6	23.6	25.3	25.7	22.0
Proportion of far-advanced cavitory pulmonary tuberculosis patients among all pulmonary tuberculosis patients (%)	Total	2.2	3.0	1.9	2.9	1.7	1.6
	Male	2.7	4.1	2.1	3.4	1.9	1.5
	Female	1.5	1.3	1.6	1.7	1.2	1.7
Proportion of symptomatic pulmonary tuberculosis patients upon diagnosis among all pulmonary tuberculosis (%)	Total	72.9	58.9	79.6	70.8	79.0	84.4
	Male	72.3	59.9	78.0	69.6	77.3	84.5
	Female	73.9	57.2	82.2	74.0	82.5	84.3
Proportion of pulmonary tuberculosis patients with only symptoms other than respiratory symptoms among symptomatic pulmonary tuberculosis patients (%)	Total	27.7	22.3	29.6	26.0	27.5	32.7
	Male	26.1	22.3	27.4	27.4	26.8	27.9
	Female	30.3	22.4	33.0	22.4	28.7	37.9
Proportion of patient delay of two months or more among symptomatic pulmonary tuberculosis patients (%)*	Total	19.9	26.9	17.5	21.6	20.3	13.4
	Male	19.8	25.2	17.9	21.2	21.2	13.1
	Female	20.0	29.7	16.7	22.7	18.8	13.8
Proportion of doctor delay of one month or more among symptomatic pulmonary tuberculosis patients (%)*	Total	21.5	21.2	21.6	23.5	23.2	19.4
	Male	21.0	19.5	21.5	22.3	22.5	20.1
	Female	22.2	23.7	21.7	26.8	24.5	18.6
Proportion of total delay of three months or more among symptomatic pulmonary tuberculosis patients (%)*	Total	20.5	28.3	17.8	22.8	19.7	14.2
	Male	19.9	25.5	18.0	22.4	21.0	12.8
	Female	21.3	32.9	17.4	23.7	17.3	15.8
Proportion of tuberculosis patients detected as out-patient for other diseases among newly notified tuberculosis patients (%)	Total	12.7	7.4	15.0	19.0	17.5	11.1
	Male	13.8	7.3	16.5	19.7	18.2	12.7
	Female	11.2	7.5	12.8	17.5	16.2	9.4
Proportion of tuberculosis patients detected as in-patient for other diseases among newly notified tuberculosis patients (%)	Total	17.8	5.2	23.1	15.4	21.7	27.8
	Male	17.2	6.0	21.8	15.4	21.7	25.8
	Female	18.7	4.2	25.1	15.4	21.8	29.8

Subjects: * Excluding the patients of unknown delays

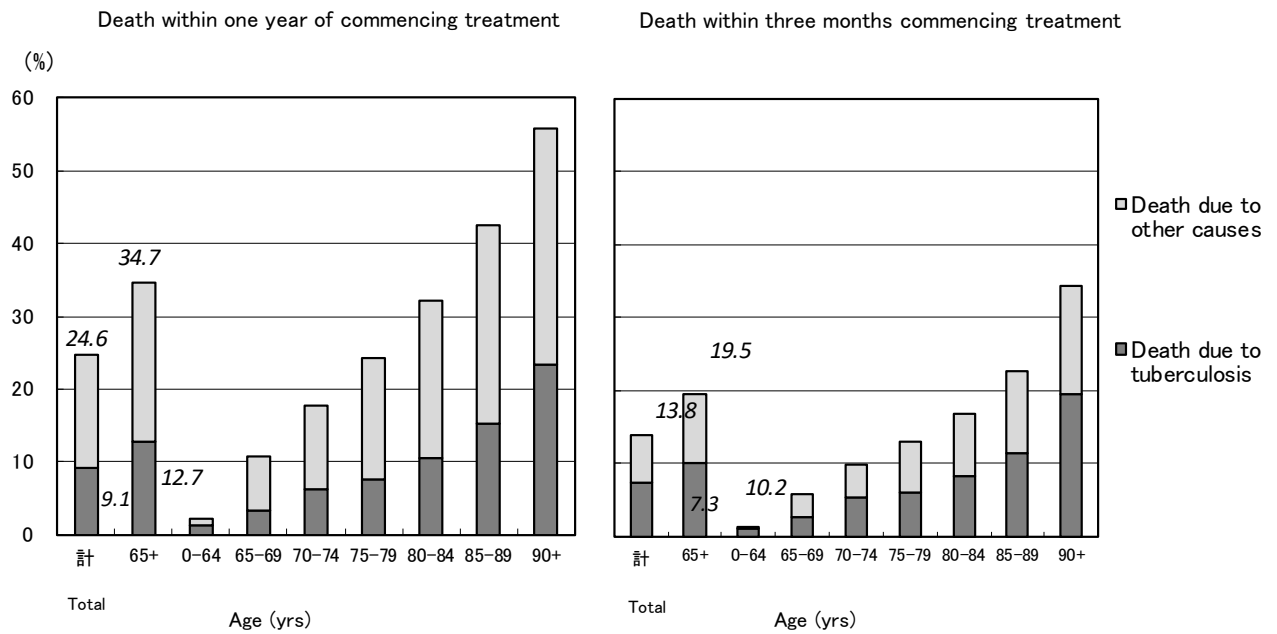


Fig.5 Proportion of death among newly notified tuberculosis patients in 2021 by age group, cause of death and duration till death
 The date when tuberculosis diagnosis was made was used as the date treatment was commenced for those who died before the start of treatment.

Previous table Number and proportion of elderly TB by prefecture and city, 2022

65+ (yrs)			85+ (yrs)		
Area	<i>n</i>	%	Area	<i>n</i>	%
Japan	7,189	70.2	Japan	3,130	30.6
Fukui	39	92.9	Kouchi	27	50.0
Tokushima	66	88.0	Nagasaki	67	48.9
Nagasaki	119	86.9	Miyazaki	41	48.8
Nara	105	86.1	Oita	58	48.7
Kouchi	46	85.2	Yamagata	23	47.9
Wakayama	80	85.1	Fukui	20	47.6
Miyazaki	71	84.5	Kumamoto city	26	47.3
Kumamoto city	46	83.6	Niigata	29	46.8
Oita	98	82.4	Akita	24	46.2
Yamagata	39	81.3	Iwate	27	45.0
Ishikawa	64	81.0	Tottori	18	45.0
Akita	42	80.8	Okayama city	20	44.4
Niigata	50	80.6	Niigata city	19	44.2
Hokkaido	152	80.4	Tokushima	33	44.0
Koube city	119	80.4	Yamaguchi	51	44.0
.
Ibaraki	155	62.5	Yokohama city	67	23.3
Yokohama city	180	62.5	Tokyo	276	23.1
Sagamihara city	30	62.5	Saitama city	22	22.9
Kawasaki city	79	62.2	Sagamihara city	11	22.9
Tokyo	731	61.3	Osakacity	107	22.3
Fukuoka city	87	60.8	Saitama	100	21.7
Saitama city	56	58.3	Gunma	24	21.4
Chiba	231	57.9	Tokyo 23wards	198	21.4
Tokyo 23wards	534	57.7	Chiba city	19	20.0
Gunma	63	56.3	Chiba	76	19.0

Descending order by proportion of elderly TB patients