

【小児】

表1 新登録小児結核患者数(登録率)および特定肺外結核、1965～2022年

Table 1 Number and rates of childhood tuberculosis patients and specific extra-pulmonary tuberculosis, 1965-2022

| 年<br>Year | 0～14歳新登録患者<br>Newly notified tuberculosis<br>aged 0-14 yrs |           | 結核性髄膜炎数<br>No. of meningeal tuberculosis |                | 粟粒結核数<br>No. of miliary tuberculosis |                |
|-----------|--|-----------|--|----------------|--------------------------------------|----------------|
|           | 数<br>Number  | 率<br>Rate | 0～14歳                                    | 0～4歳 (率)       | 0～14歳                                | 0～4歳 (率)       |
|           |  |           | 0-14 yrs                                 | 0-4 yrs (Rate) | 0-14 yrs                             | 0-4 yrs (Rate) |
| 1965      | 44,180   | 175.6     | —  | —              | —                                    | —              |
| 1970      | 18,197   | 73.4      | —  | —              | —                                    | —              |
| 1975      | 4,905  | 18.0      | 28                                       | 22 (0.221)     | —                                    | —              |
| 1980      | 1,893  | 6.9       | 22                                       | 14 (0.164)     | —                                    | —              |
| 1985      | 1,088  | 4.2       | —  | —              | —                                    | —              |
| 1990      | 518  | 2.3       | 9  | 4 (0.061)      | 10                                   | 8 (0.122)      |
| 1995      | 340  | 1.7       | 8  | 8 (0.136)      | 8                                    | 8 (0.136)      |
| 2000      | 220  | 1.2       | 7  | 4 (0.069)      | 3                                    | 3 (0.052)      |
| 2005      | 117  | 0.7       | 3  | 1 (0.018)      | 3                                    | 1(0.018)       |
| 2010      | 89   | 0.5       | 0  | 0              | 0                                    | 0              |
| 2011      | 84   | 0.5       | 1  | 0              | 2                                    | 1(0.019)       |
| 2012      | 63   | 0.4       | 1  | 1(0.019)       | 0                                    | 0              |
| 2013      | 66   | 0.4       | 2  | 2(0.038)       | 0                                    | 0              |
| 2014      | 49   | 0.3       | 5  | 2(0.038)       | 2                                    | 1(0.019)       |
| 2015      | 51   | 0.3       | 1  | 1(0.020)       | 1                                    | 0              |
| 2016      | 59   | 0.4       | 2  | 2(0.040)       | 1                                    | 1(0.020)       |
| 2017      | 59   | 0.4       | 2  | 1(0.020)       | 3                                    | 3(0.061)       |
| 2018      | 51   | 0.3       | 1  | 1(0.021)       | 1                                    | 1(0.021)       |
| 2019      | 38   | 0.2       | 0  | 0              | 3                                    | 2(0.042)       |
| 2020      | 52   | 0.3       | 1  | 1(0.022)       | 1                                    | 1(0.022)       |
| 2021      | 29   | 0.2       | 0  | 0              | 1                                    | 1(0.023)       |
| 2022      | 35   | 0.2       | 0  | 0              | 0                                    | 0              |

肺外結核:重複あり

Extra-pulmonary tuberculosis: Cases are counted independently.

率: 当該年齢人口10万対率

Rate: per 100,000

—: 情報なし

—: Not available

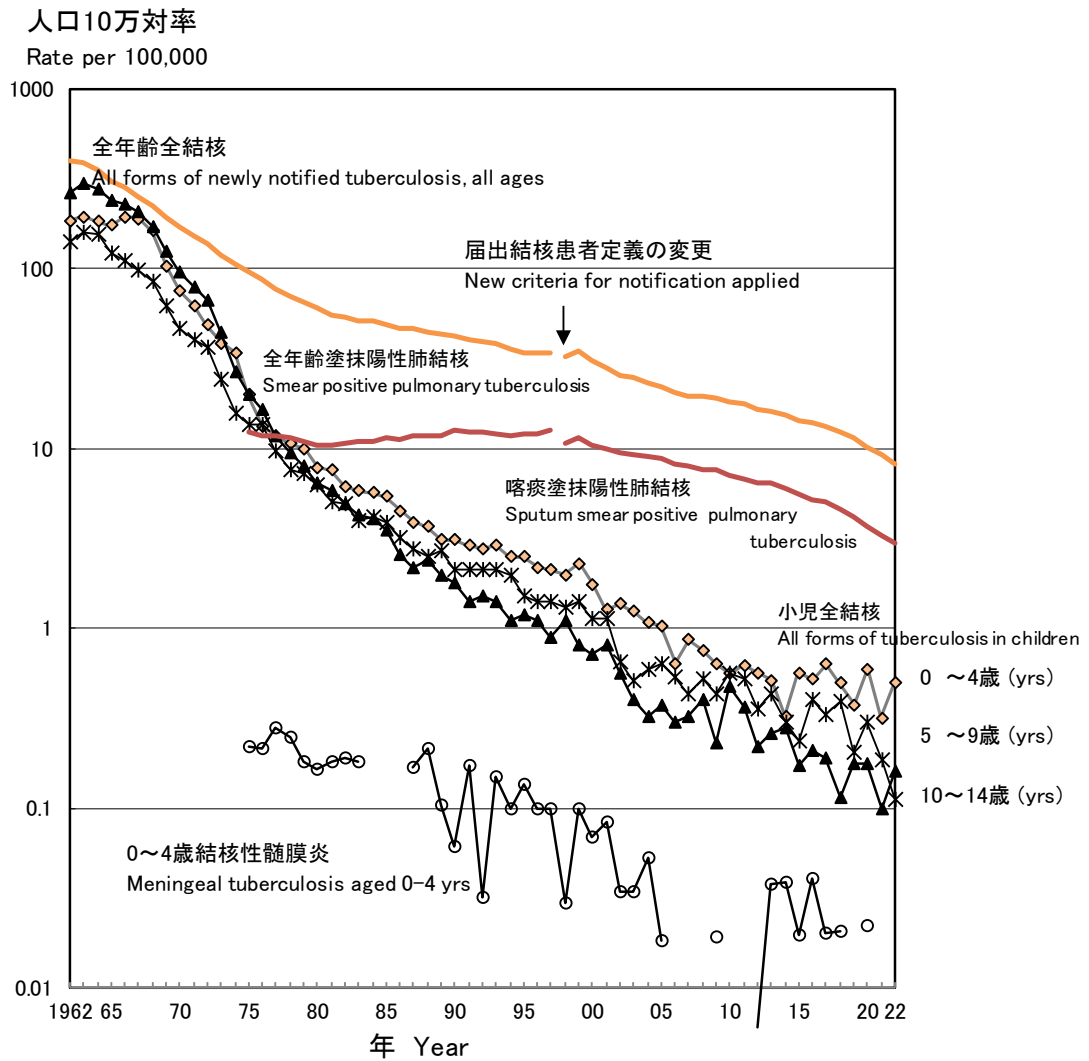


図 1 小児結核登録率の推移、人口10万対、1962~2022年  
Fig. 1 Trend of childhood tuberculosis notification rates, per 100,000 population, 1962~2022

表 2 年齢別発見方法別小児結核患者数、2022年  
Table 2 Number of newly notified childhood tuberculosis patients by age and mode of detection, 2022

|  | 年齢(歳) Age (yrs) |   |   |   |   |   |   |   |   |   |    |    |    |    | 計 Total |    |
|--|-----------------|---|---|---|---|---|---|---|---|---|----|----|----|----|---------|----|
|  | 0               | 1 | 2 | 3 | 4 | 5 | 6 | 7 | 8 | 9 | 10 | 11 | 12 | 13 |         | 14 |
| 学校健診<br>School mass-investigation            | -               | - | - | - | - | - | - | - | - | - | -  | -  | -  | -  | -       | -  |
| 家族接触者健診<br>Family contact investigation      | 3               | 1 | 2 | 1 | 3 | 3 | 1 | - | - | - | 1  | -  | 1  | 1  | 2       | 19 |
| 他接触者健診<br>Other contact investigation        | -               | - | - | - | - | - | - | - | - | - | -  | -  | -  | -  | -       | -  |
| 医療機関<br>At clinics/hospitals (with symptoms) | 6               | 3 | 1 | - | - | 1 | - | 1 | - | 2 | -  | -  | -  | 1  | -       | 15 |
| その他 Others                                   | 1               | - | - | - | - | - | - | - | - | - | -  | -  | -  | -  | -       | 1  |
| 計 Total                                      | 10              | 4 | 3 | 1 | 3 | 4 | 1 | 1 | - | 2 | 1  | -  | 1  | 2  | 2       | 35 |

表 3 小児結核患者および潜在性結核感染症の治療者における年齢別BCG接種率、2022年  
Table 3 Proportion of BCG vaccinated cases among newly notified childhood tuberculosis patients and LTBI cases, 2022

|  | 年齢 Age in years  |      |       |       |              |       |      |       |       |      | 0-4<br>計 Total | 5-9  | 10-14 | 計 Total |
|--|------------------|------|-------|-------|--------------|-------|------|-------|-------|------|----------------|------|-------|---------|
|  | 月齢 Age in months |      |       |       | 0<br>計 Total | 1     | 2    | 3     | 4     |      |                |      |       |         |
|  | 0-2              | 3-5  | 6-8   | 9-11  |              |       |      |       |       |      |                |      |       |         |
| 結核患者数 Tuberculosis cases                               | 2                | 3    | 3     | 2     | 10           | 4     | 3    | 1     | 3     | 21   | 8              | 6    | 35    |         |
| BCG接種者 BCG vaccinated                                  | 0                | 0    | 1     | 1     | 2            | 1     | 0    | 1     | 2     | 6    | 1              | 1    | 8     |         |
| BCG未接種 BCG not vaccinated                              | 2                | 1    | 0     | 1     | 4            | 0     | 0    | 0     | 0     | 4    | 3              | 1    | 8     |         |
| BCG不明 BCG unknown                                      | 0                | 2    | 2     | 0     | 4            | 3     | 3    | 0     | 1     | 11   | 4              | 4    | 19    |         |
| BCG接種率(%) <sup>*</sup> BCG vaccinated (%) <sup>*</sup> | 0.0              | 0.0  | 100.0 | 50.0  | 33.3         | 100.0 |      | 100.0 | 100.0 | 60.0 | 25.0           | 50.0 | 50.0  |         |
| 潜在性結核感染症 LTBI  | 6                | 60   | 149   | 16    | 231          | 17    | 12   | 8     | 11    | 279  | 42             | 33   | 354   |         |
| BCG接種者 BCG vaccinated                                  | 0                | 38   | 106   | 8     | 152          | 11    | 5    | 7     | 7     | 182  | 24             | 5    | 211   |         |
| BCG未接種 BCG not vaccinated                              | 3                | 5    | 2     | 0     | 10           | 0     | 1    | 0     | 0     | 11   | 0              | 2    | 13    |         |
| BCG不明 BCG unknown                                      | 3                | 17   | 41    | 8     | 69           | 6     | 6    | 1     | 4     | 86   | 18             | 26   | 130   |         |
| BCG接種率(%) <sup>*</sup> BCG vaccinated (%) <sup>*</sup> | 0.0              | 88.4 | 98.1  | 100.0 | 93.8         | 100.0 | 83.3 | 100.0 | 100.0 | 94.3 | 100.0          | 71.4 | 94.2  |         |

LTBI : Latent Tuberculosis Infection

\*%: 接種歴不明を除いた中でのBCG接種率 \*%: Proportion of BCG vaccinated cases among all TB/LTBI cases excluding BCG unknown

旧表 年齢各歳別 新登録小児結核患者数の推移、1998～2022年

Previous table Trend of newly notified childhood TB patients by age and calendar year, 1998-2022

| 年<br>Year | 年齢(歳) Age (yrs) |    |    |    |    |    |    |    |    |    |    |    |    |    | 計<br>Total |     |
|-----------|-----------------|----|----|----|----|----|----|----|----|----|----|----|----|----|------------|-----|
|           | 0               | 1  | 2  | 3  | 4  | 5  | 6  | 7  | 8  | 9  | 10 | 11 | 12 | 13 |            | 14  |
| 1998      | 31              | 39 | 15 | 18 | 16 | 12 | 18 | 14 | 13 | 10 | 7  | 7  | 29 | 18 | 27         | 274 |
| 1999      | 43              | 35 | 24 | 23 | 9  | 10 | 15 | 8  | 7  | 10 | 8  | 9  | 27 | 27 | 25         | 280 |
| 2000      | 29              | 27 | 19 | 14 | 14 | 8  | 10 | 13 | 5  | 7  | 14 | 11 | 21 | 12 | 16         | 220 |
| 2001      | 27              | 18 | 14 | 9  | 7  | 4  | 14 | 11 | 11 | 8  | 8  | 4  | 23 | 18 | 19         | 195 |
| 2002      | 30              | 21 | 14 | 12 | 3  | 9  | 8  | 5  | 6  | 6  | 2  | 3  | 14 | 15 | 7          | 155 |
| 2003      | 23              | 15 | 17 | 5  | 12 | 9  | 5  | 4  | 1  | 5  | 4  | 3  | 4  | 10 | 10         | 127 |
| 2004      | 20              | 18 | 9  | 5  | 10 | 5  | 2  | 3  | 5  | 4  | 3  | 4  | 12 | 6  | 11         | 117 |
| 2005      | 23              | 11 | 5  | 13 | 4  | 4  | 3  | 7  | 5  | 3  | 6  | 5  | 7  | 13 | 8          | 117 |
| 2006      | 9               | 6  | 8  | 6  | 6  | 6  | 3  | 3  | 2  | 4  | 3  | 4  | 3  | 13 | 9          | 85  |
| 2007      | 21              | 5  | 7  | 12 | 2  | 6  | 5  | 2  | 4  | 2  | 2  | 4  | 4  | 7  | 9          | 92  |
| 2008      | 11              | 14 | 11 | 4  | 1  | 2  | 6  | 2  | 5  | 8  | 2  | 5  | 7  | 8  | 9          | 95  |
| 2009      | 15              | 8  | 6  | 3  | 2  | 4  | 4  | 1  | 3  | 1  | 6  | 1  | 5  | 8  | 6          | 73  |
| 2010      | 10              | 6  | 5  | 5  | 4  | 6  | 6  | 8  | 3  | 3  | 5  | 4  | 4  | 7  | 13         | 89  |
| 2011      | 5               | 7  | 6  | 7  | 8  | 3  | 7  | 3  | 3  | 4  | 6  | 4  | 5  | 5  | 11         | 84  |
| 2012      | 8               | 6  | 6  | 7  | 3  | 2  | 2  | 3  | 1  | 4  | 3  | 2  | 3  | 7  | 6          | 63  |
| 2013      | 7               | 4  | 5  | 4  | 7  | 3  | 3  | 2  | 1  | 5  | 3  | 4  | 7  | 3  | 8          | 66  |
| 2014      | 5               | 8  | -  | 2  | 2  | 1  | 6  | 1  | 3  | 4  | -  | 3  | 3  | 7  | 4          | 49  |
| 2015      | 13              | 5  | 5  | 2  | 4  | 1  | -  | -  | 6  | 2  | -  | 4  | 4  | 3  | 2          | 51  |
| 2016      | 10              | 8  | 1  | 2  | 5  | 1  | 2  | -  | 4  | 4  | 3  | 3  | -  | 6  | 10         | 59  |
| 2017      | 12              | 6  | 6  | 2  | 5  | 3  | 2  | 2  | -  | 3  | 2  | 4  | 2  | 5  | 5          | 59  |
| 2018      | 14              | 2  | 2  | 5  | 1  | 1  | 1  | -  | 2  | 2  | 5  | 2  | 3  | 3  | 8          | 51  |
| 2019      | 14              | 1  | 1  | -  | 2  | 2  | 3  | -  | 3  | 1  | 1  | 1  | 3  | 2  | 4          | 38  |
| 2020      | 16              | 6  | 2  | 1  | 2  | 1  | 3  | 1  | 1  | 3  | 6  | 2  | 4  | 2  | 2          | 52  |
| 2021      | 6               | 5  | 2  | 1  | -  | -  | 1  | 1  | 2  | 1  | -  | 3  | 4  | 1  | 2          | 29  |
| 2022      | 10              | 4  | 3  | 1  | 3  | 4  | 1  | 1  | -  | 2  | 1  | -  | 1  | 2  | 2          | 35  |

2003年、学校健診方法の変更 School mass-examination was revised in 2003.

2005年、BCG接種年齢の上限が4歳までから直接接種で6か月までに変更

Upper-limitation age of BCG vaccination was changed from 4 years to 6 months, with introduction of direct vaccination policy in 2005.

旧表 小児結核患者数別都道府県数の変化、1980～2022年

Previous table Number of prefectures by number of childhood TB patients, 1980-2022

| 年<br>Year | 小児結核患者数<br>Number of childhood TB patients |    |     |     |       |       |                     | 計<br>Total |
|-----------|--|----|-----|-----|-------|-------|---------------------|------------|
|           | 0  | 1  | 2～4 | 5～9 | 10～14 | 15～19 | 20人以上<br>20+(cases) |            |
| 1980      | 0  | 0  | 1   | 6   | 7     | 4     | 29                  | 47         |
| 1985      | 0  | 0  | 5   | 11  | 10    | 2     | 19                  | 47         |
| 1990      | 0  | 3  | 13  | 11  | 8     | 2     | 10                  | 47         |
| 1995      | 3  | 6  | 14  | 13  | 4     | 2     | 5                   | 47         |
| 2000      | 9  | 8  | 13  | 10  | 3     | 1     | 3                   | 47         |
| 2005      | 17   | 8  | 13  | 7   | 2     | 0     | 0                   | 47         |
| 2006      | 19   | 13 | 8   | 6   | 1     | 0     | 0                   | 47         |
| 2007      | 17   | 12 | 11  | 5   | 2     | 0     | 0                   | 47         |
| 2008      | 14   | 12 | 16  | 4   | 1     | 0     | 0                   | 47         |
| 2009      | 27   | 6  | 8   | 4   | 2     | 0     | 0                   | 47         |
| 2010      | 15   | 14 | 14  | 3   | 0     | 0     | 1                   | 47         |
| 2011      | 19   | 11 | 12  | 4   | 0     | 0     | 1                   | 47         |
| 2012      | 22   | 11 | 11  | 3   | 0     | 0     | 0                   | 47         |
| 2013      | 19   | 14 | 9   | 5   | 0     | 0     | 0                   | 47         |
| 2014      | 22   | 14 | 9   | 2   | 0     | 0     | 0                   | 47         |
| 2015      | 25   | 10 | 9   | 3   | 0     | 0     | 0                   | 47         |
| 2016      | 25   | 10 | 7   | 5   | 0     | 0     | 0                   | 47         |
| 2017      | 25   | 8  | 11  | 2   | 1     | 0     | 0                   | 47         |
| 2018      | 26   | 12 | 6   | 2   | 1     | 0     | 0                   | 47         |
| 2019      | 32   | 5  | 8   | 2   | 0     | 0     | 0                   | 47         |
| 2020      | 28   | 9  | 6   | 4   | 0     | 0     | 0                   | 47         |
| 2021      | 34   | 9  | 3   | 0   | 1     | 0     | 0                   | 47         |
| 2022      | 34   | 5  | 7   | 1   | 0     | 0     | 0                   | 47         |

【高齢者】

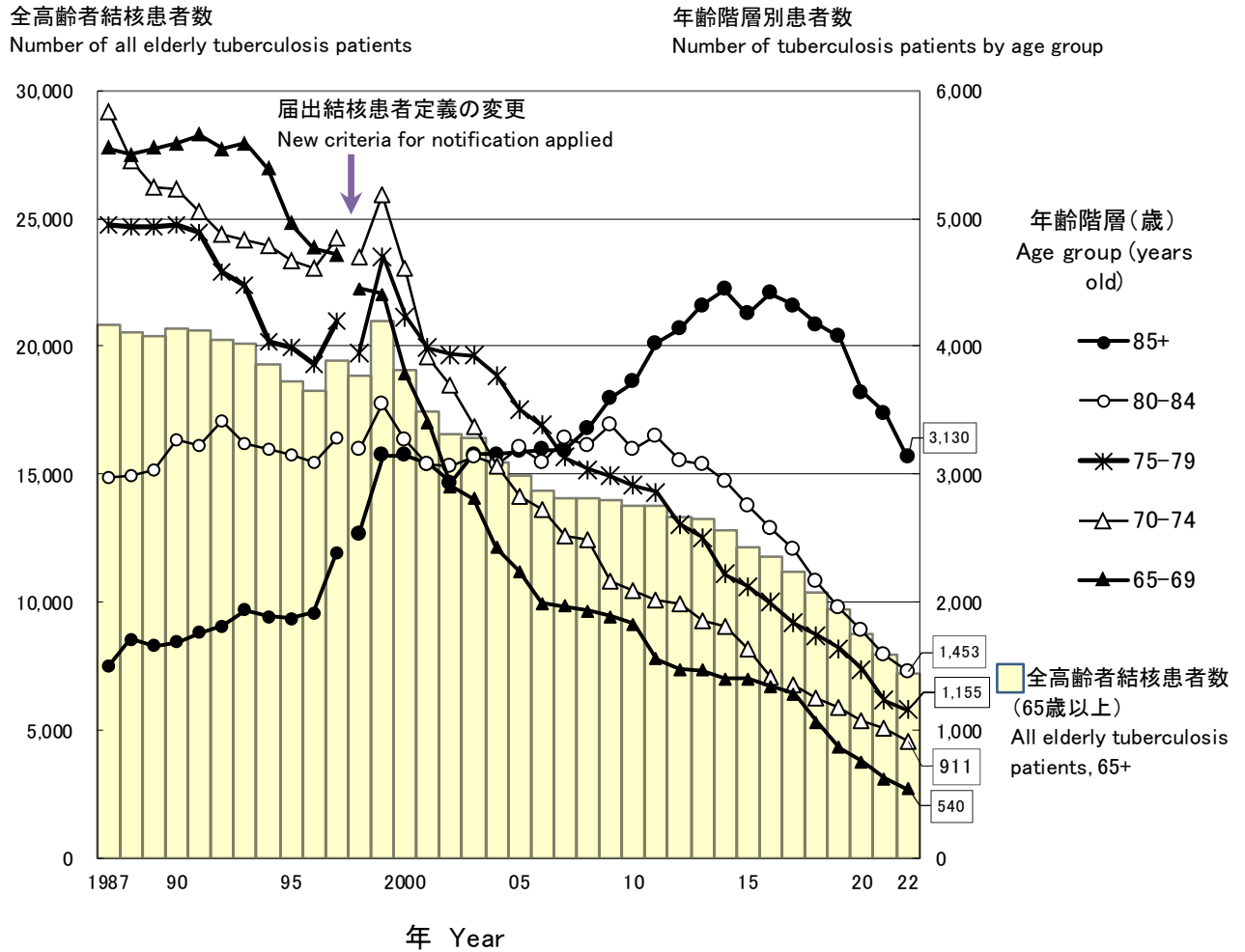


図2 高齢者結核登録者数の年次推移、年齢階層別、1987-2022年

Fig.2 Annual trend of the number of newly notified elderly tuberculosis patients by age group, 1987-2022

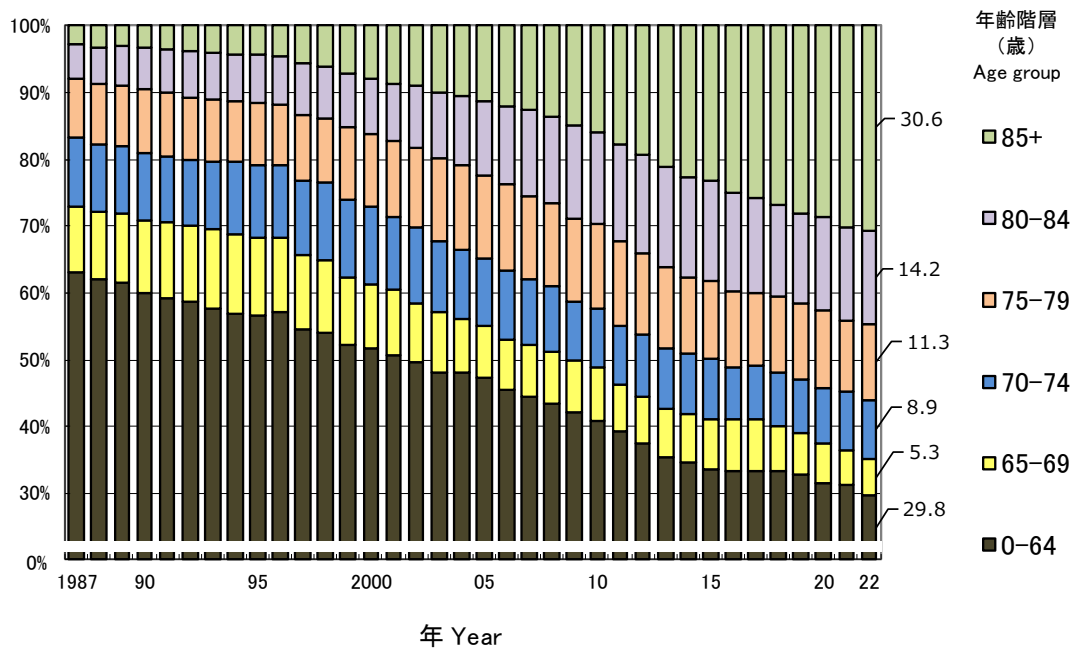


図3 新登録結核患者内の高齢者結核患者が占める割合の年齢階層別年次推移、1987-2022年  
 Fig.3 Annual trend of the proportion of elderly tuberculosis patients among all newly notified tuberculosis patients, 1987-2022

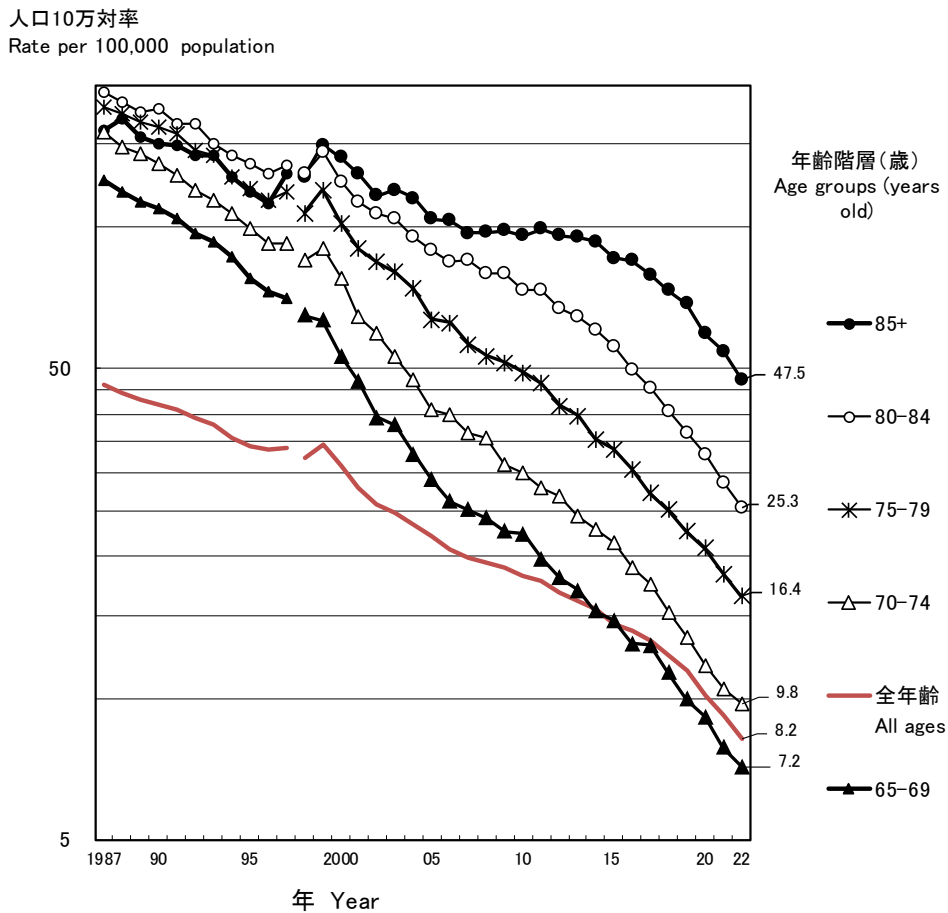


図4 高齢者年齢階層別結核登録率の年次推移、全結核、人口10万対、1987~2022年  
 Fig.4 Annual trend of elderly tuberculosis notification rates (per 100,000 population) elderly population, by age group, all forms, 1987-2022

表4 新登録結核患者の性・年齢階層別疫学指標の比較、2022年  
Table 4 Comparison of epidemiological indicators of newly notified tuberculosis patients by sex and age group, 2022

|  |          | 全年齢<br>All ages | 年齢階層 (歳) Age group (years old)   |         |                 |       |       |
|--|----------|-----------------|----------------------------------|---------|-----------------|-------|-------|
|  |          |                 | 青壮年者<br>Youth and<br>middle-aged |         | 高齢者 The elderly |       |       |
|  |          |                 | 15-64                            | all 65+ | 65-74           | 75-84 | 85+   |
| 新登録全結核患者数 (n)<br>Number of newly notified tuberculosis patients (all forms, n)   | 計 Total  | 10,235          | 3,011                            | 7,189   | 1,451           | 2,608 | 3,130 |
|  | 男 Male   | 6,058           | 1,758                            | 4,288   | 1,010           | 1,690 | 1,588 |
|  | 女 Female | 4,177           | 1,253                            | 2,901   | 441             | 918   | 1,542 |
| 全結核患者登録率 (人口10万対)<br>Tuberculosis notification rate (all forms, per 100,000 population)  | 計 Total  | 8.2             | 4.1                              | 19.8    | 8.6             | 20.4  | 47.5  |
|  | 男 Male   | 10.0            | 4.7                              | 27.3    | 12.5            | 30.5  | 75.2  |
|  | 女 Female | 6.5             | 3.4                              | 14.1    | 5.0             | 12.7  | 34.4  |
| 新登録患者中、肺外結核患者数 (n)<br>Number of newly notified extra-pulmonary tuberculosis patients (n)   | 計 Total  | 2,781           | 668                              | 2,108   | 390             | 794   | 924   |
|  | 男 Male   | 1,486           | 345                              | 1,140   | 238             | 475   | 427   |
|  | 女 Female | 1,295           | 323                              | 968     | 152             | 319   | 497   |
| 新登録全結核患者中、肺外結核患者割合 (%)<br>Proportion of extra-pulmonary tuberculosis patients among newly notified tuberculosis patients (%)   | 計 Total  | 27.2            | 22.2                             | 29.3    | 26.9            | 30.4  | 29.5  |
|  | 男 Male   | 24.5            | 19.6                             | 26.6    | 23.6            | 28.1  | 26.9  |
|  | 女 Female | 31.0            | 25.8                             | 33.4    | 34.5            | 34.7  | 32.2  |
| 新登録全結核患者中、肺結核患者数 (n)<br>Number of newly notified pulmonary tuberculosis patients (n)   | 計 Total  | 7,454           | 2,343                            | 5,081   | 1,061           | 1,814 | 2,206 |
|  | 男 Male   | 4,572           | 1,413                            | 3,148   | 772             | 1,215 | 1,161 |
|  | 女 Female | 2,882           | 930                              | 1,933   | 289             | 599   | 1,045 |
| 新登録全結核患者中、肺結核患者割合 (%)<br>Proportion of pulmonary tuberculosis patients among newly notified tuberculosis patients (%)  | 計 Total  | 72.8            | 77.8                             | 70.7    | 73.1            | 69.6  | 70.5  |
|  | 男 Male   | 75.5            | 80.4                             | 73.4    | 76.4            | 71.9  | 73.1  |
|  | 女 Female | 69.0            | 74.2                             | 66.6    | 65.5            | 65.3  | 67.8  |
| 肺結核患者中、菌陽性者割合 (%)<br>Proportion of bacteriologically positive tuberculosis patients among all pulmonary tuberculosis patients (%)  | 計 Total  | 87.6            | 79.1                             | 91.8    | 87.7            | 91.0  | 94.6  |
|  | 男 Male   | 88.2            | 80.3                             | 91.9    | 89.2            | 91.1  | 94.4  |
|  | 女 Female | 86.7            | 77.2                             | 91.8    | 83.4            | 90.7  | 94.7  |
| 肺結核患者中、喀痰塗抹陽性者割合 (%)<br>Proportion of sputum-smear positive pulmonary tuberculosis patients among all pulmonary tuberculosis patients (%)  | 計 Total  | 49.7            | 38.8                             | 55.0    | 50.0            | 53.7  | 58.4  |
|  | 男 Male   | 50.3            | 40.1                             | 55.1    | 51.0            | 52.9  | 60.2  |
|  | 女 Female | 48.6            | 36.8                             | 54.7    | 47.1            | 55.3  | 56.5  |
| 肺結核患者中、有空洞割合 (%)<br>Proportion of cavitory pulmonary tuberculosis patients among all pulmonary tuberculosis patients (%)   | 計 Total  | 29.1            | 30.4                             | 28.6    | 32.3            | 30.2  | 25.4  |
|  | 男 Male   | 32.3            | 34.3                             | 31.6    | 35.0            | 32.4  | 28.5  |
|  | 女 Female | 23.9            | 24.6                             | 23.6    | 25.3            | 25.7  | 22.0  |
| 肺結核患者中、広汎空洞型割合 (%)<br>Proportion of far-advanced cavitory pulmonary tuberculosis patients among all pulmonary tuberculosis patients (%)  | 計 Total  | 2.2             | 3.0                              | 1.9     | 2.9             | 1.7   | 1.6   |
|  | 男 Male   | 2.7             | 4.1                              | 2.1     | 3.4             | 1.9   | 1.5   |
|  | 女 Female | 1.5             | 1.3                              | 1.6     | 1.7             | 1.2   | 1.7   |
| 肺結核患者中、有症状割合 (%)<br>Proportion of symptomatic pulmonary tuberculosis patients upon diagnosis among all pulmonary tuberculosis (%)  | 計 Total  | 72.9            | 58.9                             | 79.6    | 70.8            | 79.0  | 84.4  |
|  | 男 Male   | 72.3            | 59.9                             | 78.0    | 69.6            | 77.3  | 84.5  |
|  | 女 Female | 73.9            | 57.2                             | 82.2    | 74.0            | 82.5  | 84.3  |
| 有症状肺結核患者中、呼吸器以外の症状のみ割合 (%)<br>Proportion of pulmonary tuberculosis patients with only symptoms other than respiratory symptoms among symptomatic pulmonary tuberculosis patients (%) | 計 Total  | 27.7            | 22.3                             | 29.6    | 26.0            | 27.5  | 32.7  |
|  | 男 Male   | 26.1            | 22.3                             | 27.4    | 27.4            | 26.8  | 27.9  |
|  | 女 Female | 30.3            | 22.4                             | 33.0    | 22.4            | 28.7  | 37.9  |
| 有症状肺結核中、受診の遅れ2ヵ月以上 (%)*<br>Proportion of patient delay of two months or more among symptomatic pulmonary tuberculosis patients (%)*  | 計 Total  | 19.9            | 26.9                             | 17.5    | 21.6            | 20.3  | 13.4  |
|  | 男 Male   | 19.8            | 25.2                             | 17.9    | 21.2            | 21.2  | 13.1  |
|  | 女 Female | 20.0            | 29.7                             | 16.7    | 22.7            | 18.8  | 13.8  |
| 有症状肺結核患者中、診断の遅れ1ヵ月以上割合 (%)*<br>Proportion of doctor delay of one month or more among symptomatic pulmonary tuberculosis patients (%)*  | 計 Total  | 21.5            | 21.2                             | 21.6    | 23.5            | 23.2  | 19.4  |
|  | 男 Male   | 21.0            | 19.5                             | 21.5    | 22.3            | 22.5  | 20.1  |
|  | 女 Female | 22.2            | 23.7                             | 21.7    | 26.8            | 24.5  | 18.6  |
| 有症状肺結核中、発見の遅れ3ヵ月以上 (%)*<br>Proportion of total delay of three months or more among symptomatic pulmonary tuberculosis patients (%)*  | 計 Total  | 20.5            | 28.3                             | 17.8    | 22.8            | 19.7  | 14.2  |
|  | 男 Male   | 19.9            | 25.5                             | 18.0    | 22.4            | 21.0  | 12.8  |
|  | 女 Female | 21.3            | 32.9                             | 17.4    | 23.7            | 17.3  | 15.8  |
| 新登録全結核患者中、他疾患通院中の発見割合 (%)<br>Proportion of tuberculosis patients detected as out-patient for other diseases among newly notified tuberculosis patients (%)                           | 計 Total  | 12.7            | 7.4                              | 15.0    | 19.0            | 17.5  | 11.1  |
|  | 男 Male   | 13.8            | 7.3                              | 16.5    | 19.7            | 18.2  | 12.7  |
|  | 女 Female | 11.2            | 7.5                              | 12.8    | 17.5            | 16.2  | 9.4   |
| 新登録患者中、他疾患入院中の発見割合 (%)<br>Proportion of tuberculosis patients detected as in-patient for other diseases among newly notified tuberculosis patients (%)                               | 計 Total  | 17.8            | 5.2                              | 23.1    | 15.4            | 21.7  | 27.8  |
|  | 男 Male   | 17.2            | 6.0                              | 21.8    | 15.4            | 21.7  | 25.8  |
|  | 女 Female | 18.7            | 4.2                              | 25.1    | 15.4            | 21.8  | 29.8  |

対象: \*遅れ期間不明の患者を除く

Subjects: \* Excluding the patients of unknown delays

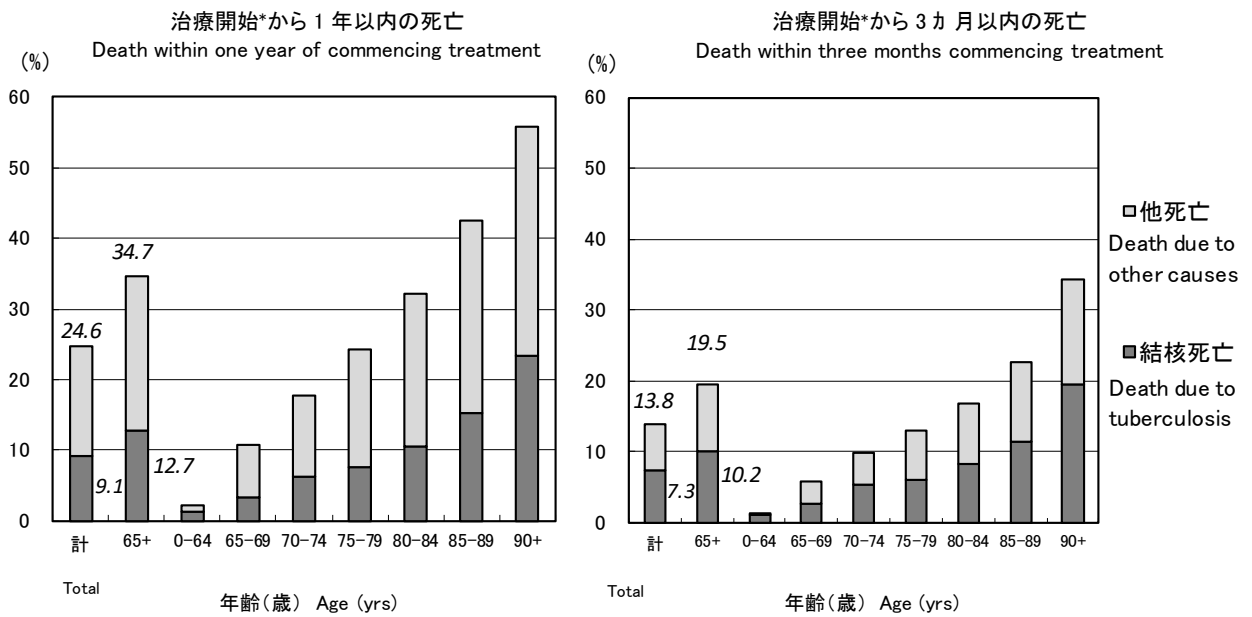


図5 2021年新登録結核患者の年齢階層別、死因別、死亡までの期間別死亡割合

Fig.5 Proportion of death among newly notified tuberculosis patients in 2021 by age group, cause of death and duration till death

\* 治療なしの場合は、診断時からの起算。\* The date when tuberculosis diagnosis was made was used as the date treatment was commenced for those who died before the start of treatment.



旧表 新登録結核患者中高齢結核者数および割合、都道府県・政令指定都市・東京23区別、2022年  
Previous table Number and proportion of elderly TB by prefecture and city, 2022

| 65歳以上 65+ (yrs) |                 |          |      | 85歳以上 85+ (yrs) |                 |          |      |
|-----------------|-----------------|----------|------|-----------------|-----------------|----------|------|
| 地域              | Area            | <i>n</i> | %    | 地域              | Area            | <i>n</i> | %    |
| 全国              | Japan           | 7,189    | 70.2 | 全国              | Japan           | 3,130    | 30.6 |
| 福井              | Fukui           | 39       | 92.9 | 高知              | Kouchi          | 27       | 50.0 |
| 徳島              | Tokushima       | 66       | 88.0 | 長崎              | Nagasaki        | 67       | 48.9 |
| 長崎              | Nagasaki        | 119      | 86.9 | 宮崎              | Miyazaki        | 41       | 48.8 |
| 奈良              | Nara            | 105      | 86.1 | 大分              | Oita            | 58       | 48.7 |
| 高知              | Kouchi          | 46       | 85.2 | 山形              | Yamagata        | 23       | 47.9 |
| 和歌山             | Wakayama        | 80       | 85.1 | 福井              | Fukui           | 20       | 47.6 |
| 宮崎              | Miyazaki        | 71       | 84.5 | 熊本市             | Kumamoto city   | 26       | 47.3 |
| 熊本市             | Kumamoto city   | 46       | 83.6 | 新潟              | Niigata         | 29       | 46.8 |
| 大分              | Oita            | 98       | 82.4 | 秋田              | Akita           | 24       | 46.2 |
| 山形              | Yamagata        | 39       | 81.3 | 岩手              | Iwate           | 27       | 45.0 |
| 石川              | Ishikawa        | 64       | 81.0 | 鳥取              | Tottori         | 18       | 45.0 |
| 秋田              | Akita           | 42       | 80.8 | 岡山市             | Okayama city    | 20       | 44.4 |
| 新潟              | Niigata         | 50       | 80.6 | 新潟市             | Niigata city    | 19       | 44.2 |
| 北海道             | Hokkaido        | 152      | 80.4 | 徳島              | Tokusima        | 33       | 44.0 |
| 神戸市             | Koube city      | 119      | 80.4 | 山口              | Yamaguchi       | 51       | 44.0 |
| .               | .               | .        | .    | .               | .               | .        | .    |
| 茨城              | Ibaraki         | 155      | 62.5 | 横浜市             | Yokohama city   | 67       | 23.3 |
| 横浜市             | Yokohama city   | 180      | 62.5 | 東京              | Tokyo           | 276      | 23.1 |
| 相模原市            | Sagamihara city | 30       | 62.5 | さいたま市           | Saitama city    | 22       | 22.9 |
| 川崎市             | Kawasaki city   | 79       | 62.2 | 相模原市            | Sagamihara city | 11       | 22.9 |
| 東京              | Tokyo           | 731      | 61.3 | 大阪市             | Osakacity       | 107      | 22.3 |
| 福岡市             | Fukuoka city    | 87       | 60.8 | 埼玉              | Saitama         | 100      | 21.7 |
| さいたま市           | Saitama city    | 56       | 58.3 | 群馬              | Gunma           | 24       | 21.4 |
| 千葉              | Chiba           | 231      | 57.9 | 東京都23区          | Tokyo 23wards   | 198      | 21.4 |
| 東京都23区          | Tokyo 23wards   | 534      | 57.7 | 千葉市             | Chiba city      | 19       | 20.0 |
| 群馬              | Gunma           | 63       | 56.3 | 千葉              | Chiba           | 76       | 19.0 |

高齢結核患者割合による高順位

Descending order by proportion of elderly TB patients