

【Case finding TB】

Table1 Proportion of mode of detection among newly notified tuberculosis patients, 2007-2022

Year	Newly notified TB patients	Individual medical checkup			Mass screening								Contact examination				Medical institutions						Others		Unknown		
					Schools		Residents		Employees		Facilities		Family		Others		Outpatients with TB symptoms(*1)		Inpatients with other diseases		Outpatients with other diseases						
					n	%	n	%	n	%	n	%	n	%	n	%	n	%	n	%	n	%					n
2007	25,311	537	2.1	217	0.9	636	2.5	1,931	7.6	145	0.6	355	1.4	370	1.5	16,997	67.2	2,031	8.0	1,611	6.4	340	1.3	141	0.6		
2008	24,760	639	2.6	195	0.8	486	2.0	1,877	7.6	144	0.6	325	1.3	410	1.7	15,347	62.0	2,681	10.8	2,100	8.5	316	1.3	240	1.0		
2009	24,170	611	2.5	197	0.8	550	2.3	1,749	7.2	136	0.6	324	1.3	311	1.3	14,864	61.5	2,752	11.4	2,220	9.2	301	1.2	155	0.6		
2010	23,261	507	2.2	244	1.0	544	2.3	1,618	7.0	128	0.6	313	1.3	350	1.5	13,901	59.8	2,792	12.0	2,305	9.9	333	1.4	226	1.0		
2011	22,681	470	2.1	188	0.8	497	2.2	1,531	6.8	126	0.6	354	1.6	482	2.1	13,177	58.1	2,916	12.9	2,515	11.1	330	1.5	95	0.4		
2012	21,283	409	1.9	163	0.8	498	2.3	1,424	6.7	121	0.6	315	1.5	374	1.8	12,284	57.7	2,941	13.8	2,312	10.9	357	1.7	85	0.4		
2013	20,495	413	2.0	172	0.8	455	2.2	1,246	6.1	89	0.4	314	1.5	333	1.6	11,978	58.4	2,745	13.4	2,306	11.3	336	1.6	108	0.5		
2014	19,615	344	1.8	201	1.0	404	2.1	1,221	6.2	92	0.5	303	1.5	333	1.7	11,441	58.3	2,591	13.2	2,210	11.3	328	1.7	147	0.7		
2015	18,280	319	1.7	192	1.1	359	2.0	1,147	6.3	78	0.4	248	1.4	263	1.4	10,556	57.7	2,630	14.4	2,043	11.2	144	0.8	127	0.7		
2016	17,625	319	1.8	250	1.4	355	2.0	1,056	6.0	98	0.6	211	1.2	409	2.3	10,073	57.2	2,471	14.0	1,971	11.2	146	0.8	98	0.6		
2017	16,789	331	2.0	259	1.5	336	2.0	1,088	6.5	70	0.4	256	1.5	323	1.9	9,338	55.6	2,528	15.1	1,900	11.3	150	0.9	73	0.4		
2018	15,590	290	1.9	226	1.4	288	1.8	1,077	6.9	74	0.5	239	1.5	314	2.0	8,617	55.3	2,317	14.9	1,798	11.5	139	0.9	56	0.4		
2019	14,460	278	1.9	226	1.6	314	2.2	983	6.8	76	0.5	210	1.5	358	2.5	7,746	53.6	2,288	15.8	1,690	11.7	104	0.7	62	0.4		
2020	12,739	207	1.6	80	0.6	203	1.6	787	6.2	34	0.3	190	1.5	199	1.6	7,096	55.7	2,102	16.5	1,583	12.4	124	1.0	50	0.4		
2021	11,519	195	1.7	124	1.1	205	1.8	725	6.3	42	0.4	142	1.2	140	1.2	6,320	54.9	1,986	17.2	1,398	12.1	99	0.9	60	0.5		
2022	10,235	188	1.8	105	1.0	181	1.8	623	6.1	31	0.3	139	1.4	108	1.1	5,499	53.7	1,820	17.8	1,303	12.7	96	0.9	68	0.7		
Age group																											
0~9	29	-	-	-	-	-	-	-	-	-	-	14	48.3	-	-	12	41.4	1	3.4	1	3.4	1	3.4	-	-	-	-
10~19	77	2	2.6	20	26.0	1	1.3	6	7.8	-	-	12	15.6	2	2.6	31	40.3	1	1.3	1	1.3	-	-	-	-	-	-
20~29	777	28	3.6	75	9.7	2	0.3	193	24.8	-	-	14	1.8	21	2.7	373	48.0	21	2.7	16	2.1	9	1.2	3	0.4		
30~39	503	15	3.0	8	1.6	1	0.2	101	20.1	1	0.2	8	1.6	12	2.4	303	60.2	14	2.8	29	5.8	4	0.8	5	1.0		
40~49	546	26	4.8	-	-	6	1.1	116	21.2	2	0.4	18	3.3	13	2.4	299	54.8	20	3.7	33	6.0	3	0.5	5	0.9		
50~59	733	32	4.4	-	-	16	2.2	113	15.4	2	0.3	15	2.0	13	1.8	387	52.8	52	7.1	85	11.6	10	1.4	4	0.5		
60~69	921	26	2.8	-	-	18	2.0	75	8.1	1	0.1	17	1.8	14	1.5	475	51.6	118	12.8	150	16.3	13	1.4	6	0.7		
70~79	2,066	28	1.4	-	-	84	4.1	19	0.9	9	0.4	22	1.1	11	0.5	1,064	51.5	387	18.7	400	19.4	20	1.0	8	0.4		
80~89	3,159	23	0.7	1	0.0	45	1.4	-	-	9	0.3	16	0.5	15	0.5	1,754	55.5	774	24.5	460	14.6	22	0.7	26	0.8		
90~	1,424	8	0.6	1	0.1	8	0.6	-	-	7	0.5	3	0.2	7	0.5	801	56.3	432	30.3	128	9.0	14	1.0	11	0.8		

TB: tuberculosis

TB symptoms: Respiratory symptoms such as cough, sputum expectoration, bloody sputum, and hemoptysis; and other symptoms such as wheezing, chest pain, back pain, dyspnea, fever, night sweating, fatigue tendency, and weight

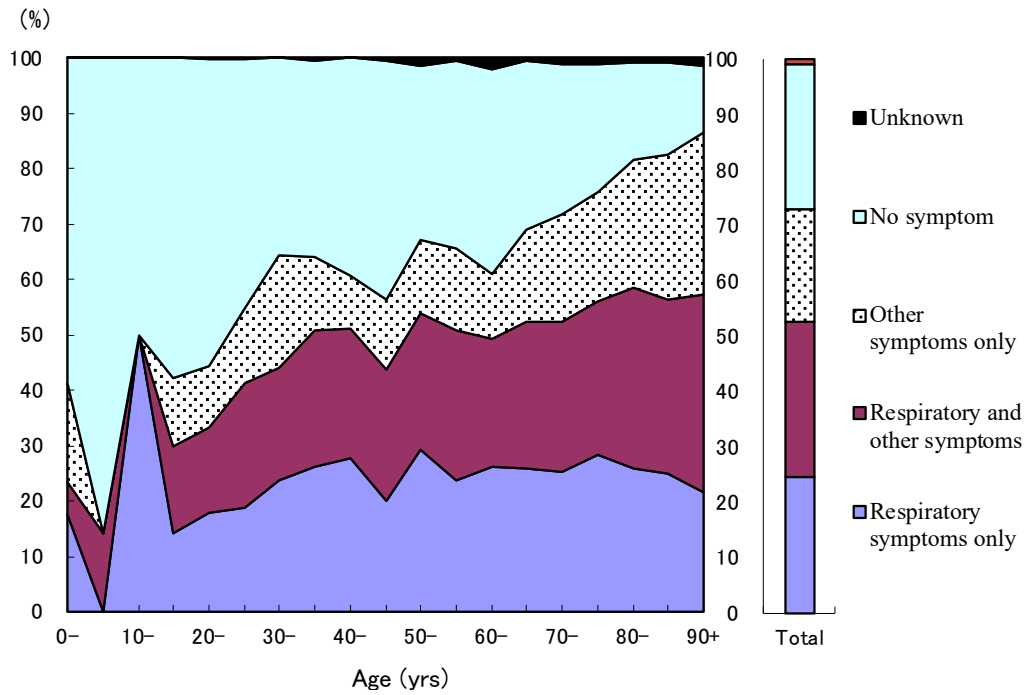


Fig.1 Proportion of symptoms among newly notified pulmonary tuberculosis patients by 5- years age group, in 2022

Respiratory symptoms include cough, sputum expectoration, bloody sputum, and hemoptysis. Other symptoms include wheezing, chest pain, back pain, dyspnea, fever, night sweating, fatigue tendency, and weight loss.

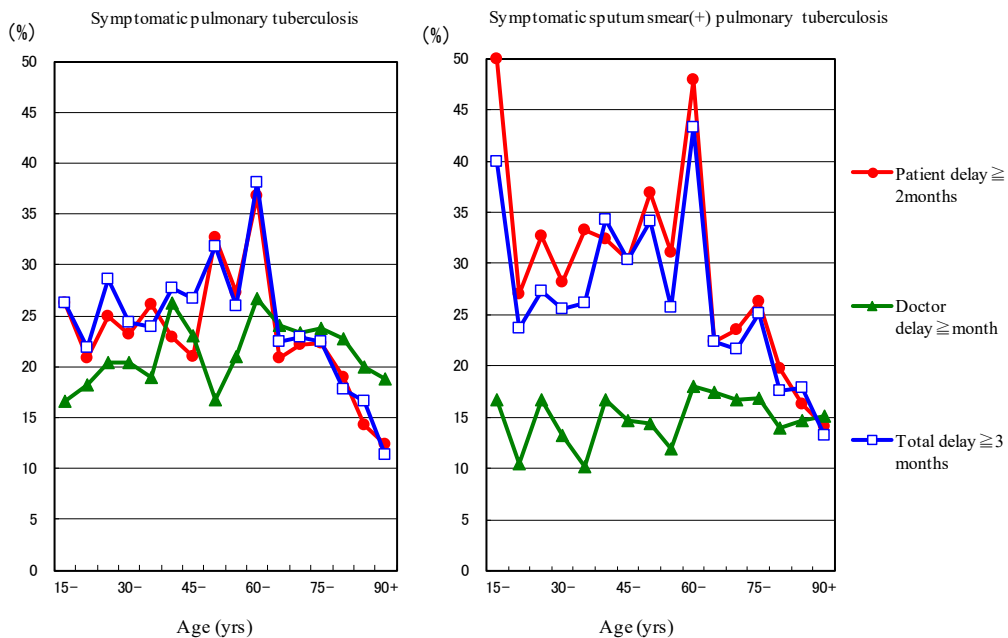


Fig.2 Proportion of patient delay, doctor delay and total delay among symptomatic pulmonary tuberculosis patients by 5- year age group, in 2022

Patient delay: time interval from the onset of symptoms to the first visit to a medical institution of 2 months or longer

Doctor delay: time interval from the first visit to a medical institution to the diagnosis of tuberculosis of 1 month or longer

Total delay: time interval from the onset of symptoms to the diagnosis of tuberculosis is 3 months or longer

Previous table Proportion of mode of detection among newly notified TB patients by age group, 2022

Age groups	Newly notified TB patients	Individual medical checkup	Mass screening				Contact examination		Medical institutions			Others	Unknown
			Schools	Residents	Employees	Facilities	Family	Others	Outpatients with TB symptoms(*1)	Inpatients with other diseases	Outpatients with other diseases		
	<i>n</i>	%	%	%	%	%	%	%	%	%	%	%	%
All forms of TB													
Total	10,235	1.8	1.0	1.8	6.1	0.3	1.4	1.1	53.7	17.8	12.7	0.9	0.7
0-14	35	0.0	0.0	0.0	0.0	0.0	54.3	0.0	37.1	2.9	2.9	2.9	0.0
15-19	71	2.8	28.2	1.4	8.5	0.0	9.9	2.8	42.3	1.4	1.4	0.0	0.0
20-24	368	3.5	15.5	0.3	25.5	0.0	2.4	3.0	41.3	2.2	0.8	1.4	0.0
25-29	409	3.7	4.4	0.2	24.2	0.0	1.2	2.4	54.0	3.2	3.2	1.0	0.7
30-34	276	3.3	2.2	0.0	18.8	0.4	2.5	2.9	60.1	2.5	5.8	0.4	0.7
35-39	227	2.6	0.9	0.4	21.6	0.0	0.4	1.8	60.4	3.1	5.7	1.3	1.3
40-44	252	6.0	0.0	1.2	21.8	0.8	2.0	1.6	54.0	3.2	6.3	1.2	1.2
45-49	294	3.7	0.0	1.0	20.7	0.0	4.4	3.1	55.4	4.1	5.8	0.0	0.7
50-54	372	4.3	0.0	3.2	15.1	0.3	1.3	1.9	55.4	4.8	11.0	1.3	0.5
55-59	361	4.4	0.0	1.1	15.8	0.3	2.8	1.7	50.1	9.4	12.2	1.4	0.6
60-64	381	4.2	0.0	1.6	13.4	0.0	1.8	1.3	46.2	13.1	15.5	1.0	1.0
65-69	540	1.9	0.0	2.2	4.4	0.2	1.9	1.7	55.4	12.6	16.9	1.7	0.4
70-74	911	0.9	0.0	4.3	1.5	0.5	0.8	0.8	51.4	17.1	20.3	1.1	0.4
75-79	1,155	1.7	0.0	3.9	0.4	0.3	1.3	0.3	51.6	20.0	18.6	0.9	0.3
80-84	1,453	1.0	0.1	2.1	0.0	0.1	0.6	0.2	54.4	23.1	16.6	0.5	1.0
85-89	1,706	0.5	0.0	0.8	0.0	0.5	0.4	0.7	56.4	25.7	12.8	0.9	0.7
90+	1,424	0.6	0.1	0.6	0.0	0.5	0.2	0.5	56.3	30.3	9.0	1.0	0.8
(Re-count) Sputum smear positive pulmonary TB													
Total	3,703	1.3	0.8	1.4	4.0	0.4	0.6	0.4	59.9	18.4	10.9	0.7	0.5
0-14	2	0.0	0.0	0.0	0.0	0.0	0.0	0.0	50.0	50.0	0.0	0.0	0.0
15-19	17	0.0	29.4	0.0	11.8	0.0	5.9	0.0	47.1	0.0	0.0	0.0	0.0
20-24	99	3.0	16.2	0.0	25.3	0.0	1.0	0.0	50.5	0.0	0.0	1.0	0.0
25-29	99	4.0	4.0	0.0	19.2	0.0	0.0	0.0	67.7	2.0	2.0	1.0	0.0
30-34	66	3.0	3.0	0.0	9.1	0.0	0.0	1.5	71.2	4.5	6.1	0.0	1.5
35-39	70	5.7	1.4	0.0	11.4	0.0	0.0	0.0	71.4	5.7	2.9	1.4	0.0
40-44	74	2.7	0.0	1.4	16.2	2.7	0.0	1.4	64.9	2.7	6.8	1.4	0.0
45-49	95	3.2	0.0	1.1	14.7	0.0	2.1	1.1	66.3	5.3	4.2	0.0	0.0
50-54	132	2.3	0.0	1.5	8.3	0.0	2.3	0.0	65.9	9.8	8.3	0.8	0.0
55-59	132	2.3	0.0	0.8	16.7	0.0	3.8	0.8	54.5	8.3	9.1	1.5	1.5
60-64	124	2.4	0.0	0.8	12.1	0.0	0.8	0.8	56.5	12.1	10.5	0.8	1.6
65-69	193	1.0	0.0	0.5	3.6	0.5	0.0	1.0	64.8	10.9	13.0	2.6	0.0
70-74	337	0.3	0.0	3.9	1.8	0.3	0.6	0.0	59.1	17.8	14.5	0.0	0.6
75-79	419	1.7	0.0	2.6	0.2	0.0	0.7	0.2	55.4	22.0	15.5	0.5	0.2
80-84	555	0.9	0.0	1.4	0.0	0.0	0.4	0.2	58.2	22.2	15.7	0.2	0.5
85-89	686	0.6	0.0	1.2	0.0	0.9	0.3	0.1	60.3	23.5	11.5	0.6	0.3
90+	603	0.3	0.2	0.5	0.0	0.8	0.2	0.5	59.9	27.7	7.8	1.0	0.8

TB: tuberculosis

TB symptoms: Respiratory symptoms such as cough, sputum expectoration, bloody sputum, and hemoptysis; and other symptoms such as wheezing, chest pain, back pain, dyspnea, fever, night sweating, fatigue tendency, and weight loss.

Previous table Number of newly notified TB patients by occupation, sex and age group, 2022

Sex/Age group	Total	Service workers	Nurses/Public health nurses	Medical doctors	Other medical workers	Teachers/Nursery nurses	Pupils/Students	Other regular workers	Other temporary/daily workers	Other self-employed	Housekeepers	Infants/Little children	Jobless/ Others	Unknown
Male	6,058	97	8	18	50	17	134	1,006	179	320	6	8	4,018	197
0-14	12	0	0	0	0	0	4	0	0	0	0	8	0	0
15-19	32	0	0	0	0	0	25	3	1	0	0	0	3	0
20-24	196	7	0	0	4	0	62	75	8	2	0	0	33	5
25-29	215	8	0	0	13	0	28	114	13	2	0	0	28	9
30-39	247	12	3	2	6	4	13	138	14	13	1	0	36	5
40-49	304	18	5	0	9	2	0	161	13	32	0	0	48	16
50-59	493	23	0	4	5	6	1	224	29	56	0	0	123	22
60-69	646	13	0	5	5	4	0	193	42	56	0	0	295	33
70-79	1,419	13	0	4	8	1	0	88	50	103	3	0	1,094	55
80+	2,494	3	0	3	0	0	1	10	9	56	2	0	2,358	52
Female	4,177	98	105	2	142	31	133	349	128	67	61	16	2,949	96
0-14	23	0	0	0	0	0	5	0	0	0	0	16	2	0
15-19	39	0	0	0	0	0	31	4	0	1	0	0	3	0
20-24	172	6	4	0	10	1	70	35	15	2	0	0	27	2
25-29	194	9	8	1	27	2	23	58	19	4	2	0	34	7
30-39	256	20	22	0	23	4	4	71	26	4	12	0	56	14
40-49	242	21	28	0	26	10	0	71	23	4	8	0	39	12
50-59	240	18	22	0	29	8	0	63	14	11	13	0	57	5
60-69	275	9	19	1	19	5	0	29	14	10	10	0	151	8
70-79	647	11	1	0	7	1	0	15	15	14	11	0	547	25
80+	2,089	4	1	0	1	0	0	3	2	17	5	0	2,033	23

Previous table Proportion of mode of detection among newly notified pulmonary TB patients aged 20-59 years by occupation, 2022

	Pulmonary TB patients <i>n</i>	Individual medical checkup %	Mass screening			Contact examination		Clinics/Hospitals			Others/Unknown %
			Residents %	Employees %	Schools/Facilities %	Family %	Others %	Outpatients with TB symptoms %	Inpatients with other diseases %	Outpatients with other diseases %	
Total	1,984	4.8	1.1	25.3	4.4	2.7	2.8	46.7	3.7	5.2	3.2
Service workers	104	4.8	1.9	15.4	0.0	2.9	0.0	65.4	1.9	6.7	1.0
Medical workers(*1)	199	6.5	1.0	36.2	0.0	1.5	9.5	37.2	2.5	3.5	2.0
Teachers/ Nursery nurses	29	10.3	3.4	20.7	0.0	0.0	3.4	62.1	0.0	0.0	0.0
Students	177	5.6	0.6	0.0	46.3	2.8	2.8	33.3	0.0	1.1	7.3
Other regular workers	780	4.4	0.5	39.9	0.1	3.1	2.8	41.8	2.9	2.8	1.7
Other temporary/ daily workers	139	7.2	1.4	21.6	0.0	0.0	2.2	56.8	1.4	5.0	4.3
Other self-employed	103	5.8	3.9	7.8	0.0	4.9	1.0	55.3	3.9	14.6	2.9
Housekeepers	28	10.7	0.0	7.1	0.0	7.1	0.0	57.1	7.1	10.7	0.0
Jobless/ Others	359	1.9	1.4	14.8	1.1	2.5	1.1	52.4	9.5	10.3	5.0
Unknown	66	7.6	0.0	6.1	0.0	4.5	0.0	63.6	3.0	6.1	9.1

Medical workers include nurses, public health nurses, medical doctors and dentists, physical therapists, occupational therapists, medical technologists, radiographers, and co-medicals.

TB symptoms: Respiratory symptoms such as cough, sputum expectoration, bloody sputum, and hemoptysis; and other symptoms such as wheezing, chest pain, back pain, dyspnea, fever, night sweating, fatigue tendency, and weight loss.

【Tuberculosis Characteristics upon diagnosis】

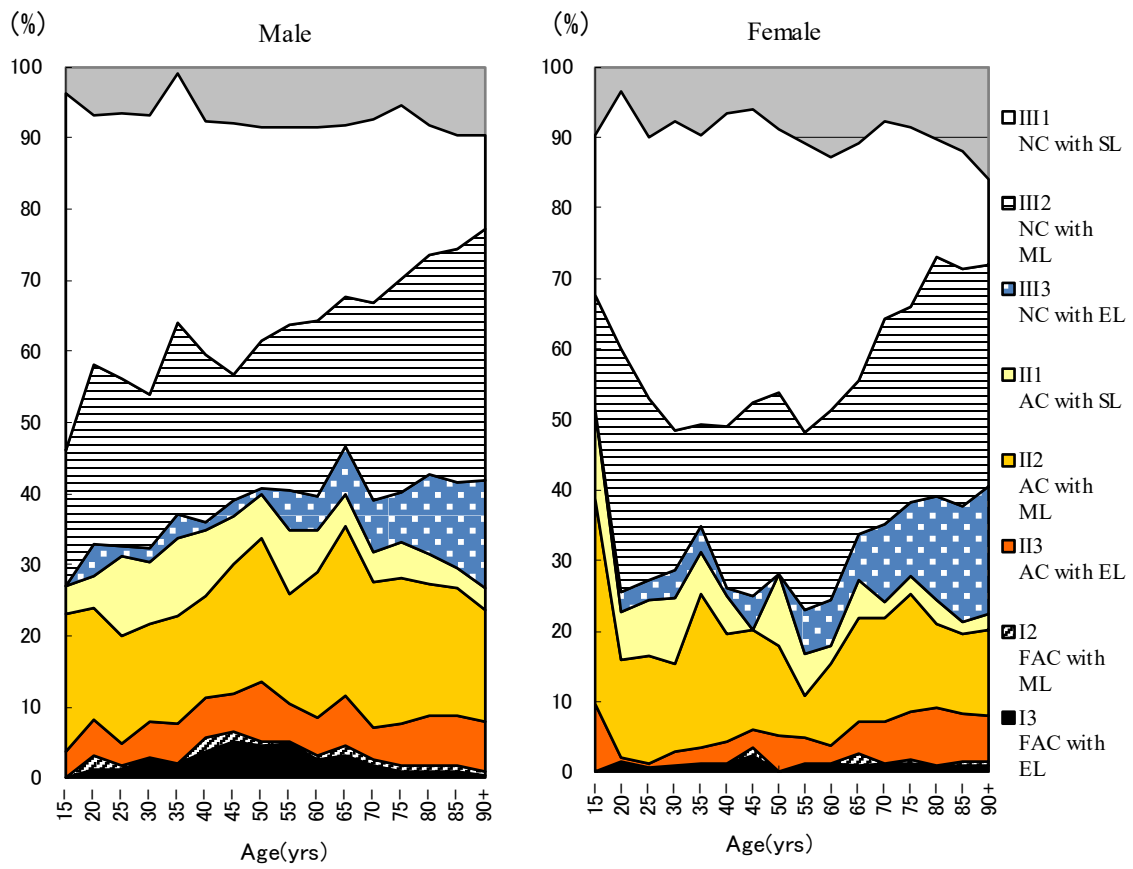


Fig.3 Proportion of cases classified by X-ray classification by sex and 5-yearage group, 2022  
 NC : Non-cavitory SL : Slight lesion AC : Advanced cavitory ML : Moderate lesion  
 FAC: Far-advance cavitory EL : Extensive lesion

Table 2 Number of newly notified tuberculosis patients with HIV infection, by sex and age group, 2022 and 2007–2022

Age group	Sputum smear positive		Other bacteriologic ally-positive		Bacteriologically- negative		Extra-pulmonary		Total	
	M	F	M	F	M	F	M	F	M	F
2022 Calendar year										
Total	11 (1)	2 (1)	3	0	0	0	6 (3)	3 (2)	20 (4)	5 (3)
0-19	0	0	0	0	0	0	0	0	0	0
20-24	0	0	0	0	0	0	0	0	0	0
25-29	0	0	0	0	0	0	1 (1)	0	1 (1)	0
30-34	0	1 (1)	0	0	0	0	1	1 (1)	1	2 (2)
35-39	0	0	0	0	0	0	1 (1)	0	1 (1)	0
40-44	0	1	0	0	0	0	0	0	0	1
45-49	1	0	0	0	0	0	1	1 (1)	2	1 (1)
50-54	1	0	0	0	0	0	1 (1)	0	2 (1)	0
55-59	2 (1)	0	1	0	0	0	1	0	4 (1)	0
60-64	3	0	0	0	0	0	0	0	3	0
65-69	0	0	1	0	0	0	0	0	1	0
70-74	0	0	1	0	0	0	0	0	1	0
75-79	0	0	0	0	0	0	0	0	0	0
80+	4	0	0	0	0	0	0	1	4	1
2007~2022年 2007-2022 Calendar year										
Total	205 (28)	52 (25)	116 (30)	19 (13)	54 (12)	11 (8)	244 (58)	37 (22)	619 (128)	119 (68)
0-19	1 (1)	0	0	0	1 (1)	0	3	0	5 (2)	0
20-24	10 (8)	0	4 (3)	1 (1)	1 (1)	1 (1)	3 (2)	1	18 (14)	3 (2)
25-29	10 (5)	8 (7)	7 (3)	2 (2)	1 (1)	2 (2)	20 (9)	1 (1)	38 (18)	13 (12)
30-34	15 (5)	7 (6)	13 (2)	5 (4)	4 (2)	1 (1)	30 (10)	7 (5)	62 (19)	20 (16)
35-39	25 (2)	4 (3)	21 (6)	3 (3)	9 (2)	3 (3)	41 (13)	6 (5)	96 (23)	16 (14)
40-44	32 (2)	8 (5)	16 (5)	0	11 (3)	3 (1)	45 (15)	8 (6)	104 (25)	19 (12)
45-49	20 (2)	3 (3)	15 (7)	1 (1)	6 (1)	0	37 (6)	3 (1)	78 (16)	7 (5)
50-54	19 (1)	1	12 (2)	2 (1)	6 (1)	0	19 (2)	1 (1)	56 (6)	4 (2)
55-59	13 (1)	0	8 (2)	0	4	0	12	3 (3)	37 (3)	3 (3)
60-64	22	1	6	1 (1)	3	0	10	0	41	2 (1)
65-69	10	1 (1)	7	0	5	0	11 (1)	1	33 (1)	2 (1)
70-74	6 (1)	3	4	2	1	0	7	2	18 (1)	7
75-79	7	1	0	0	1	0	3	2	11	3
80+	15	15	3	2	1	1	3	2	22	20

( ) : Re-count of foreigners

HIV : Human Immunodeficiency Virus. M : male patients, F : female patients.

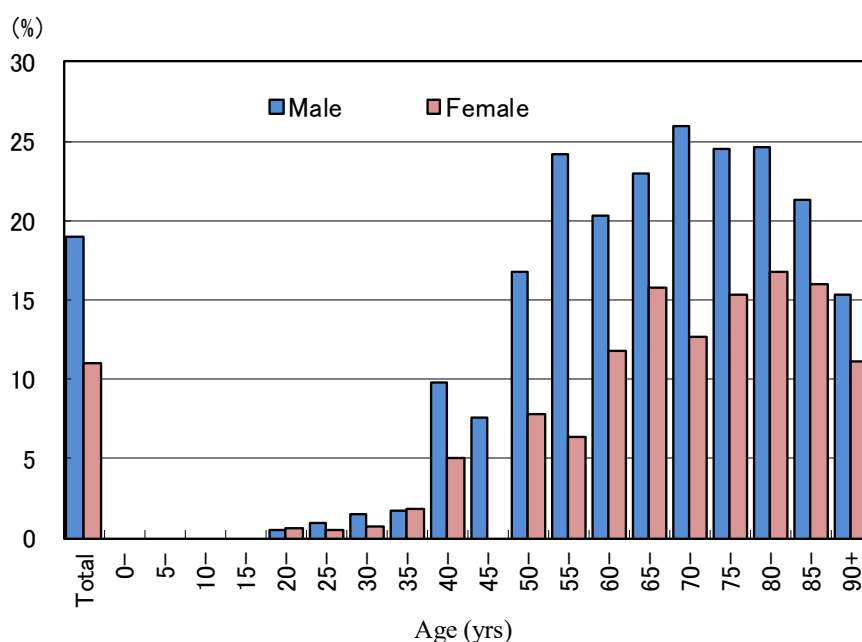


Fig.4 Proportion of newly notified tuberculosis patients with diabetes mellitus in each age-group by sex, 2022

Table 3 Drug susceptibility test results among newly notified pulmonary tuberculosis patients, by treatment history, 2012–2022

Treatment history, Culture examination results, Drug susceptibility test results	2012				2013				2014				2015				2016				2017				2018				2019				2020				2021				2022											
	n	%	%	%	n	%	%	%	n	%	%	%	n	%	%	%	n	%	%	%	n	%	%	%	n	%	%	%	n	%	%	%	n	%	%	%	n	%	%	%	n	%	%	%								
<b>Total</b>																																																				
Pulmonary tuberculosis	16,432	100%			15,972	100%			15,149	100%			14,123	100%			13,608	100%			13,011	100%			12,033	100%			11,094	100%			9,446	100%			8,413	100%			7,454	100%										
Culture result obtained	14,058	85.6			13,311	83.3			12,909	85.2			12,260	86.8			12,255	90.1			11,764	90.4			11,070	92.0			9,968	89.9			8,170	86.5			7,219	85.8			6,450	86.5										
Culture positive	11,261	68.5	100%		10,523	65.9	100%		10,259	67.7	100%	10,035	71.1	100%		9,878	72.6	100%		9,580	73.6	100%		9,016	74.9	100%		8,110	73.1	100%		6,645	70.3	100%		5,902	70.2	100%		5,231	70.2	100%		5,231	70.2	100%						
DST result obtained	8,347		74.1	100%	7,701		73.2	100%	7,645		74.5	100%	7,630		76.0	100%	7,732		78.3	100%	7,891		82.4	100%	7,570		84.0	100%	6,638		82.1	100%	5,209		78.4	100%	4,551		77.1	100%	4,086		78.1	100%								
MDR	60		0.7		47		0.6		56		0.7		48		0.6		49		0.6		52		0.7		55		0.7		44		0.7		46		0.9		41		0.9		26		0.9									
Any INH resistance	380		4.6		369		4.8		349		4.6		372		4.9		369		4.8		383		4.9		377		5.0		359		5.4		297		5.7		221		4.9		200		4.9									
Any RFP resistance	73		0.9		64		0.8		76		1.0		77		1.0		74		1.0		80		1.0		87		1.1		65		1.0		60		1.2		56		1.2		41		1.2									
Any resistance*	810		9.7		757		9.8		749		9.8		767		10.1		741		9.6		853		10.8		781		10.3		719		10.8		579		11.1		475		10.4		438		10.7									
<b>New treatment</b>																																																				
Pulmonary tuberculosis	15,040	100%			14,727	100%			13,956	100%			13,102	100%			12,686	100%			12,174	100%			11,298	100%			10,405	100%			8,891	100%			7,974	100%			7,047	100%										
Culture result obtained	12,882	85.7			12,279	83.4			11,897	85.2			11,394	87.0			11,435	90.1			11,018	90.5			10,405	92.1			9,358	89.9			7,681	86.4			6,849	85.9			6,094	86.5										
Culture positive	10,379	69.0	100%		9,782	66.4	100%		9,523	68.2	100%	9,379	71.6	100%		9,284	73.2	100%		9,030	74.2	100%		8,536	75.6	100%		7,652	73.5	100%		6,289	70.7	100%		5,622	70.5	100%		4,972	70.6	100%		4,972	70.6	100%						
DST result obtained	7,676		74.0	100%	7,166		73.3	100%	7,104		74.6	100%	7,135		76.1	100%	7,278		78.4	100%	7,434		82.3	100%	7,171		84.0	100%	6,288		82.2	100%	4,938		78.5	100%	4,335		77.1	100%	3,899		78.4	100%								
MDR	38		0.5		31		0.4		40		0.6		33		0.5		37		0.5		41		0.6		41		0.6		35		0.6		31		0.6		36		0.8		21		0.8									
Any INH resistance	310		4.0		326		4.5		288		4.1		317		4.4		316		4.3		338		4.5		331		4.6		319		5.1		260		5.3		205		4.7		182		4.7									
Any RFP resistance	46		0.6		42		0.6		58		0.8		58		0.8		56		0.8		62		0.8		68		0.9		52		0.8		44		0.9		48		1.1		32		0.8									
Any resistance*	712		9.3		680		9.5		664		9.3		686		9.6		659		9.1		773		10.4		717		10.0		656		10.4		532		10.8		444		10.2		407		10.4									
<b>Re-treatment</b>																																																				
Pulmonary tuberculosis	1,094	100%			1,013	100%			968	100%			851	100%			735	100%			660	100%			575	100%			542	100%			424	100%			342	100%			302	100%										
Culture result obtained	959	87.7			852	84.1			848	87.6			732	86.0			665	90.5			605	91.7			532	92.5			477	88.0			374	88.2			292	85.4			271	89.7										
Culture positive	693	63.3	100%		586	57.8	100%		591	61.1	100%	534	62.7	100%		462	62.9	100%		423	64.1	100%		365	63.5	100%		341	62.9	100%		257	60.6	100%		209	61.1	100%		185	61.3	100%		185	61.3	100%						
DST result obtained	555		80.1	100%	435		74.2	100%	449		76.0	100%	412		77.2	100%	358		77.5	100%	362		85.6	100%	323		88.5	100%	286		83.9	100%	201		78.2	100%	166		79.4	100%	143		77.3	100%								
MDR	22		4.0		16		3.7		15		3.3		14		3.4		12		3.4		9		2.5		11		3.4		9		3.1		13		6.5		4		2.4		5		3.5									
Any INH resistance	67		12.1		35		8.0		57		12.7		49		11.9		51		14.2		36		9.9		41		12.7		36		12.6		31		15.4		11		6.6		14		9.8									
Any RFP resistance	26		4.7		22		5.1		17		3.8		18		4.4		16		4.5		15		4.1		16		5.0		13		4.5		14		7.0		7		4.2		9		6.3									
Any resistance*	94		16.9		65		14.9		79		17.6		72		17.5		70		19.6		65		18.0		58		18.0		56		19.6		40		19.9		21		12.7		24		16.8									
<b>No information about treatment history</b>																																																				
Pulmonary tuberculosis	298	100%			232	100%			225	100%			170	100%			187	100%			177	100%			160	100%			147	100%			131	100%			97	100%			105	100%										
Culture result obtained	217	72.8			180	77.6			164	72.9			134	78.8			155	82.9			141	79.7			133	83.1			133	90.5			78	80.4			85	81.0			85	81.0										
Culture positive	189	63.4	100%		155	66.8	100%		145	64.4	100%	122	71.8	100%		132	70.6	100%		127	71.8	100%		115	71.9	100%		117	79.6	100%		99	75.6	100%		71	73.2	100%		74	70.5	100%		74	70.5	100%						
DST result obtained	116		61.4	100%	100		64.5	100%	92		63.4	100%	83		68.0	100%	96		72.7	100%	95		74.8	100%	76		66.1	100%	84		71.8	100%	70		70.7	100%	50		70.4	100%	44		59.5	100%								
MDR	0		0.0		0		0.0		1		1.1		1		1.2		0		0.0		2		2.1		3		3.9		0		0.0		2		2.9		1		2.0		0		0.0									
Any INH resistance	3		2.6		8		8.0		4		4.3		6		7.2		2		2.1		9		9.5		5		6.6		4		4.8		6		8.6		5		10.0		4		9.1									
Any RFP resistance	1		0.9		0		0.0		1		1.1		1		1.2		2		2.1		3		3.2		3		3.9		0		0.0		2		2.9		1		2.0		0		0.0									
Any resistance*	4		3.4		12		12.0		6		6.5		9		10.8		12		12.5		15		15.8		6		7.9		7		8.3		7		10.0		10		20.0		7		15.9									

DST: Drug susceptibility test MDR: Multi-drug resistant, i.e., resistant to at least INH and RFP INH: isoniazid RFP: rifampicin

Cases having drug resistance are counted independently by drug.

\*resistant to either INH, RFP, SM, or EB

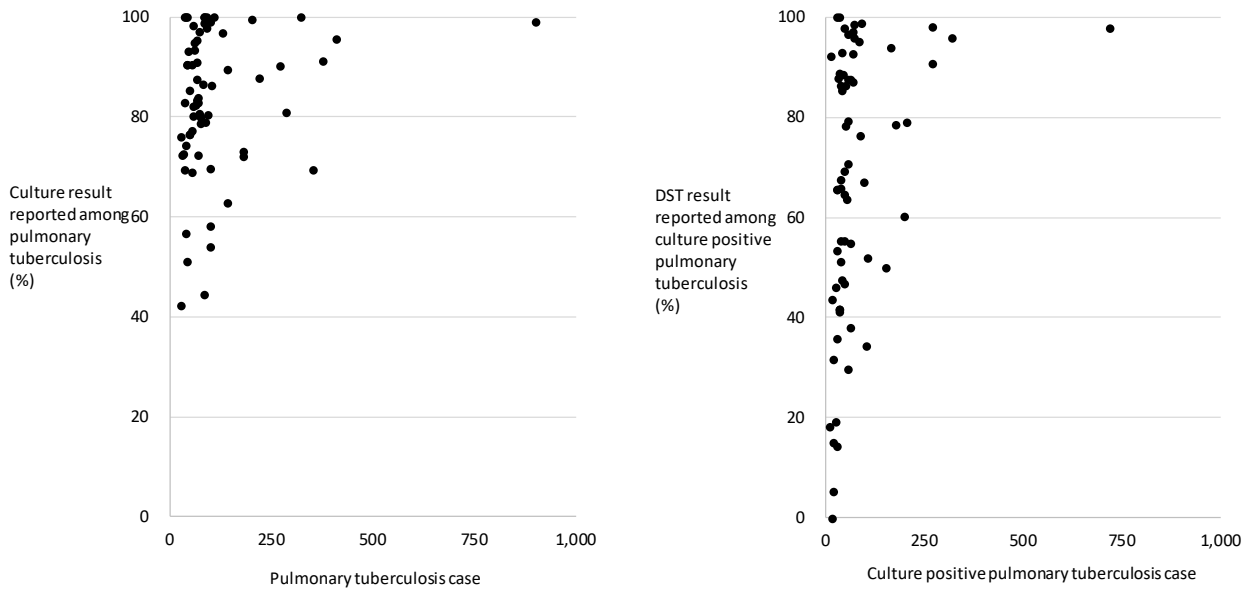
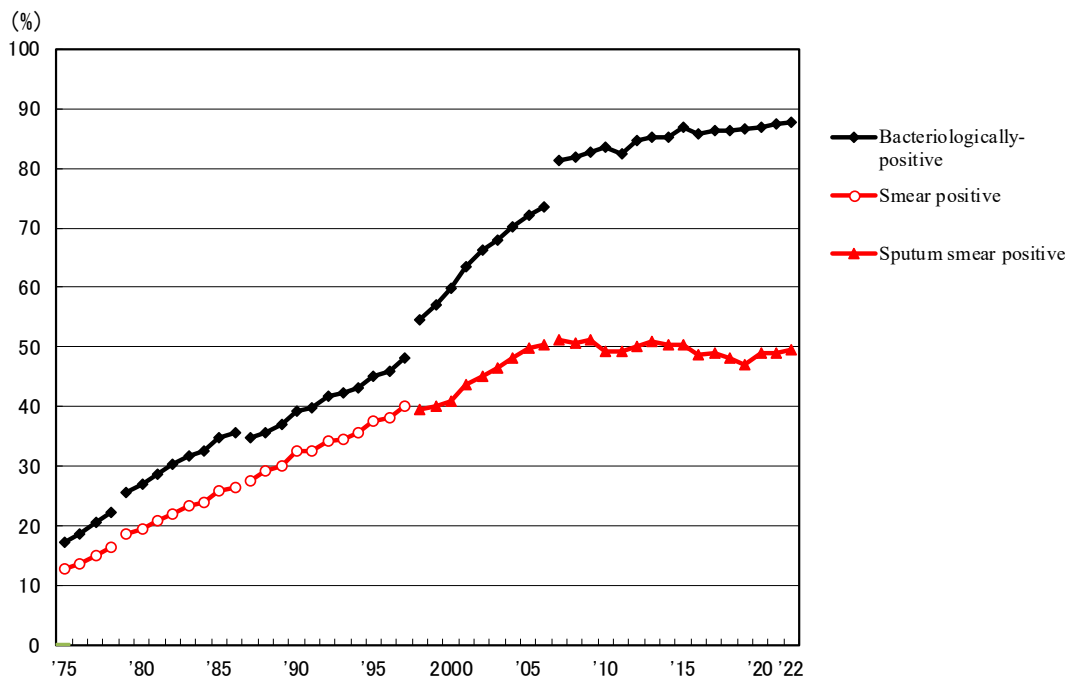


Fig. 5 Scatter plot of culture results reported among pulmonary tuberculosis patients and anti-tuberculosis drug susceptibility test results among newly notified pulmonary tuberculosis patients, by prefecture and major city, 2022



Previous Fig

Proportion of bacteriologically confirmed cases among newly notified pulmonary tuberculosis patients, 1975-2022

Sources of information and subjects:

Annual tuberculosis reports from public health centers

1975-1978: All forms of tuberculosis

1979-1986: Pulmonary tuberculosis

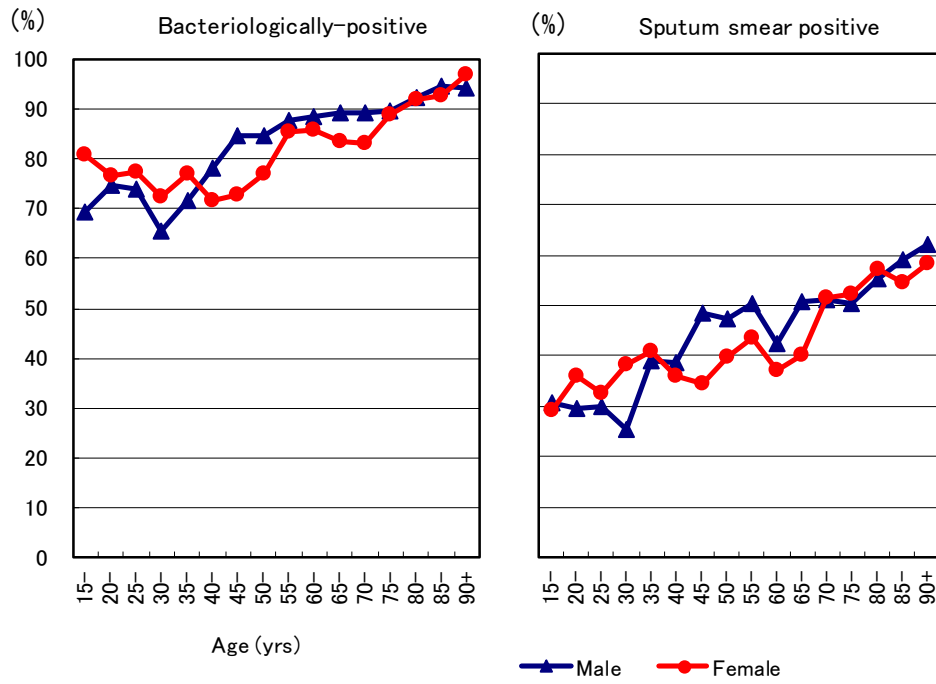
Nationwide computerized tuberculosis surveillance system

1987-1997: Pulmonary Tuberculosis

1998-2006: Pulmonary tuberculosis (New patient criteria for notification were applied)

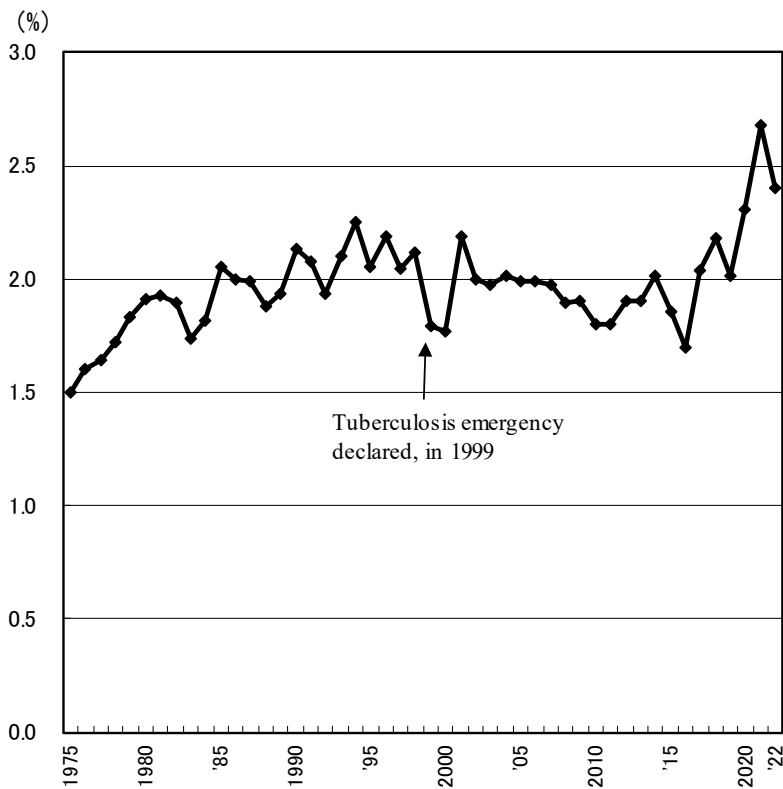
2007-2009: Pulmonary tuberculosis (Item of nucleic acid amplification was added)





Previous Fig.

Proportion of bacteriologically confirmed cases among newly notified pulmonary tuberculosis patients by sex and 5-year age group, 2022



Previous Fig.

Proportion of far-advanced cavitory cases among newly notified pulmonary Tuberculosis patients, 1975-2022

Previous table Proportion of cavitary or/and sputum smear positive cases among newly notified pulmonary TB patients aged 30-59 years, 2022

	Male								Female							
	Pulmonary TB	Cavitary or sputum smear(+)			Cavitary and sputum smear(+)			Pulmonary TB	Cavitary or sputum smear(+)			Cavitary and sputum smear(+)				
		n	%	Ratio	n	%	Ratio		n	%	Ratio	n	%	Ratio		
Service workers	35	20	57.1	1.4	7	20.0	1.2	46	25	54.3	1.6	9	19.6	2.9		
Medical workers	29	12	41.4	1.0	5	17.2	1.0	117	39	33.3	1.0	8	6.8	1.0		
Teachers/ Nursery nurses	12	3	25.0	0.6	2	16.7	1.0	14	6	42.9	1.3	0	0.0	0.0		
Other regular workers	418	198	47.4	1.1	89	21.3	1.2	145	71	49.0	1.5	22	15.2	2.2		
Other temporary/ daily workers	49	34	69.4	1.7	17	34.7	2.0	48	27	56.3	1.7	10	20.8	3.0		
Other self-employed	78	49	62.8	1.5	29	37.2	2.2	16	9	56.3	1.7	3	18.8	2.7		
Jobless	145	94	64.8	1.6	49	33.8	2.0	79	45	57.0	1.7	20	25.3	3.7		
Others	73	36	49.3	1.2	22	30.1	1.7	60	28	46.7	1.4	9	15.0	2.2		
Total	839	446	53.2		220	26.2		525	250	47.6		81	15.4			

Others:Houskeepers/ Students/ Unknown

Ratio: The ratio of each proportion to that of medical workers

Previous table Drug susceptibility test results among newly notified pulmonary tuberculosis patients, by sex and age group, 2022 and 2007–2022

Age group	Total										New treatment (Re-count)									
	Male					Female					Male				Female					
	DST result obtained	MDR	Any INH resistance	Any RFP resistance	*Any resistance	DST result obtained	MDR	Any INH resistance	Any RFP resistance	*Any resistance	DST result obtained	MDR	Any INH resistance	Any RFP resistance	*Any resistance	DST result obtained	MDR	Any INH resistance	Any RFP resistance	*Any resistance
2022 Calendar year																				
Total	2,574	16	137	25	287	1,512	10	63	16	151	2,438	13	127	18	266	1,461	8	55	14	141
0-19	12	2	3	2	3	21	1	2	1	2	12	2	3	2	3	21	1	2	1	2
20-29	148	3	10	3	20	137	6	15	9	26	145	3	10	3	20	134	4	13	7	23
30-39	86	3	5	4	17	85	1	6	1	12	82	2	4	3	15	81	1	6	1	11
40-49	152	1	12	1	22	85	0	3	1	10	143	1	11	1	21	79	0	1	1	8
50-59	235	0	11	2	25	97	2	5	2	11	221	0	11	1	24	95	2	5	2	11
60-69	298	1	14	2	37	90	0	3	0	8	276	1	13	2	35	87	0	3	0	8
70-79	613	5	35	9	77	213	0	7	0	21	581	3	30	5	66	208	0	7	0	21
80+	1,030	1	47	2	86	784	0	22	2	61	978	1	45	1	82	756	0	18	2	57
2007-2021 Calendar year																				
Total	69,152	504	3,564	755	8,074	37,719	302	1,711	395	3,701	63,472	342	2,997	525	7,131	35,644	203	1,438	279	3,301
0-19	529	14	55	17	112	453	4	39	5	83	508	11	52	14	109	430	4	37	5	78
20-29	3,806	84	324	109	673	3,187	95	276	119	550	3,650	66	293	86	631	3,054	70	243	90	504
30-39	3,832	42	258	63	617	3,006	51	218	65	436	3,639	31	240	52	581	2,891	40	197	50	401
40-49	5,201	47	289	72	693	2,607	27	140	39	323	4,894	37	262	54	630	2,479	18	123	29	295
50-59	7,330	63	412	110	1,039	2,196	27	110	37	249	6,837	37	358	72	940	2,073	12	84	21	216
60-69	11,254	72	595	129	1,461	3,147	20	158	26	361	10,367	52	501	90	1,285	2,968	14	129	18	316
70-79	15,105	98	783	142	1,797	6,477	32	280	41	636	13,718	53	616	83	1,539	6,048	15	231	21	564
80+	22,095	84	848	113	1,682	16,646	46	490	63	1,063	19,859	55	675	74	1,416	15,701	30	394	45	927
2007-2021 Calendar year																				
Total	100%	0.7	5.2	1.1	11.7	100%	0.8	4.5	1.0	9.8	100%	0.5	4.7	0.8	11.2	100%	0.6	4.0	0.8	9.3
0-19	100	2.6	10.4	3.2	21.2	100	0.9	8.6	1.1	18.3	100	2.2	10.2	2.8	21.5	100	0.9	8.6	1.2	18.1
20-29	100	2.2	8.5	2.9	17.7	100	3.0	8.7	3.7	17.3	100	1.8	8.0	2.4	17.3	100	2.3	8.0	2.9	16.5
30-39	100	1.1	6.7	1.6	16.1	100	1.7	7.3	2.2	14.5	100	0.9	6.6	1.4	16.0	100	1.4	6.8	1.7	13.9
40-49	100	0.9	5.6	1.4	13.3	100	1.0	5.4	1.5	12.4	100	0.8	5.4	1.1	12.9	100	0.7	5.0	1.2	11.9
50-59	100	0.9	5.6	1.5	14.2	100	1.2	5.0	1.7	11.3	100	0.5	5.2	1.1	13.7	100	0.6	4.1	1.0	10.4
60-69	100	0.6	5.3	1.1	13.0	100	0.6	5.0	0.8	11.5	100	0.5	4.8	0.9	12.4	100	0.5	4.3	0.6	10.6
70-79	100	0.6	5.2	0.9	11.9	100	0.5	4.3	0.6	9.8	100	0.4	4.5	0.6	11.2	100	0.2	3.8	0.3	9.3
80+	100	0.4	3.8	0.5	7.6	100	0.3	2.9	0.4	6.4	100	0.3	3.4	0.4	7.1	100	0.2	2.5	0.3	5.9

DST: Drug susceptibility test. MDR: Multi-drug resistance, i.e., resistant to at least INH and RFP. INH: Isoniazid. RFP: Rifampicin.

Previous table Drug susceptibility test results among newly notified pulmonary tuberculosis patients, by sex and age group, 2007-2022 (Re-count of foreigners)

Age group	Total										New treatment (Re-count)									
	Male					Female					Male					Female				
	DST result obtained	MDR	Any INH resistance	Any RFP resistance	*Any resistance	DST result obtained	MDR	Any INH resistance	Any RFP resistance	*Any resistance	DST result obtained	MDR	Any INH resistance	Any RFP resistance	*Any resistance	DST result obtained	MDR	Any INH resistance	Any RFP resistance	*Any resistance
2007~2022年	2007-2022 Calendar year																			
総数 Total	3,207	122	384	150	624	3,196	138	388	167	609	3,057	81	337	114	568	3,052	102	344	130	549
0-19	177	13	38	15	56	129	2	15	3	20	171	10	35	12	53	125	2	14	3	19
20-29	1,728	75	214	93	344	1,504	83	195	101	319	1,665	58	189	73	316	1,449	63	170	78	287
30-39	560	22	59	28	104	757	30	103	33	146	531	16	53	22	94	724	23	94	25	134
40-49	249	6	24	8	42	391	10	37	13	61	232	2	18	3	34	367	7	34	9	55
50-59	169	2	10	2	17	193	6	22	8	33	162	0	8	0	15	178	5	17	7	26
60-69	143	4	24	4	39	91	3	10	4	14	133	4	22	4	37	88	3	10	4	14
70-79	88	0	8	0	11	53	4	6	4	10	78	0	6	0	9	47	3	5	3	8
80+	93	0	7	0	11	78	0	0	1	6	85	0	6	0	10	74	0	0	1	6
2007~2022年	2007-2022 Calendar year																			
総数 Total	100%	3.8	12.0	4.7	19.5	100%	4.3	12.1	5.2	19.1	100%	2.6	11.0	3.7	18.6	100%	3.3	11.3	4.3	18.0
0-19	100	7.3	21.5	8.5	31.6	100	1.6	11.6	2.3	15.5	100	5.8	20.5	7.0	31.0	100	1.6	11.2	2.4	15.2
20-29	100	4.3	12.4	5.4	19.9	100	5.5	13.0	6.7	21.2	100	3.5	11.4	4.4	19.0	100	4.3	11.7	5.4	19.8
30-39	100	3.9	10.5	5.0	18.6	100	4.0	13.6	4.4	19.3	100	3.0	10.0	4.1	17.7	100	3.2	13.0	3.5	18.5
40-49	100	2.4	9.6	3.2	16.9	100	2.6	9.5	3.3	15.6	100	0.9	7.8	1.3	14.7	100	1.9	9.3	2.5	15.0
50-59	100	1.2	5.9	1.2	10.1	100	3.1	11.4	4.1	17.1	100	0.0	4.9	0.0	9.3	100	2.8	9.6	3.9	14.6
60-69	100	2.8	16.8	2.8	27.3	100	3.3	11.0	4.4	15.4	100	3.0	16.5	3.0	27.8	100	3.4	11.4	4.5	15.9
70-79	100	0.0	9.1	0.0	12.5	100	7.5	11.3	7.5	18.9	100	0.0	7.7	0.0	11.5	100	6.4	10.6	6.4	17.0
80+	100	0.0	7.5	0.0	11.8	100	0.0	0.0	1.3	7.7	100	0.0	7.1	0.0	11.8	100	0.0	0.0	1.4	8.1

DST: Drug susceptibility test. MDR: Multi-drug resistance, i.e., resistant to at least INH and RFP. INH: Isoniazid. RFP: Rifampicin.