

【患者発見】

表1 新登録結核患者の発見方法、2007～2022年

Table1 Proportion of mode of detection among newly notified tuberculosis patients, 2007-2022

年 Year	新登録 患者 Newly notified TB patients	個別 健診 Individual medical checkup	定期健診 Mass screening								接触者健診 Contact examination				医療機関 Medical institutions					その他 Others		不明 Unknown			
			学校 Schools		住民 Residents		職場 Employees		施設 Facilities		家族 Family		その他 Others		有症状受診(*1) Outpatients with TB symptoms(*1)		入院中 Inpatients with other diseases		通院中 Outpatients with other diseases		n	%	n	%	
			n	%	n	%	n	%	n	%	n	%	n	%	n	%	n	%	n	%					
2007	25,311	537	2.1	217	0.9	636	2.5	1,931	7.6	145	0.6	355	1.4	370	1.5	16,997	67.2	2,031	8.0	1,611	6.4	340	1.3	141	0.6
2008	24,760	639	2.6	195	0.8	486	2.0	1,877	7.6	144	0.6	325	1.3	410	1.7	15,347	62.0	2,681	10.8	2,100	8.5	316	1.3	240	1.0
2009	24,170	611	2.5	197	0.8	550	2.3	1,749	7.2	136	0.6	324	1.3	311	1.3	14,864	61.5	2,752	11.4	2,220	9.2	301	1.2	155	0.6
2010	23,261	507	2.2	244	1.0	544	2.3	1,618	7.0	128	0.6	313	1.3	350	1.5	13,901	59.8	2,792	12.0	2,305	9.9	333	1.4	226	1.0
2011	22,681	470	2.1	188	0.8	497	2.2	1,531	6.8	126	0.6	354	1.6	482	2.1	13,177	58.1	2,916	12.9	2,515	11.1	330	1.5	95	0.4
2012	21,283	409	1.9	163	0.8	498	2.3	1,424	6.7	121	0.6	315	1.5	374	1.8	12,284	57.7	2,941	13.8	2,312	10.9	357	1.7	85	0.4
2013	20,495	413	2.0	172	0.8	455	2.2	1,246	6.1	89	0.4	314	1.5	333	1.6	11,978	58.4	2,745	13.4	2,306	11.3	336	1.6	108	0.5
2014	19,615	344	1.8	201	1.0	404	2.1	1,221	6.2	92	0.5	303	1.5	333	1.7	11,441	58.3	2,591	13.2	2,210	11.3	328	1.7	147	0.7
2015	18,280	319	1.7	192	1.1	359	2.0	1,147	6.3	78	0.4	248	1.4	263	1.4	10,556	57.7	2,630	14.4	2,043	11.2	144	0.8	127	0.7
2016	17,625	319	1.8	250	1.4	355	2.0	1,056	6.0	98	0.6	211	1.2	409	2.3	10,073	57.2	2,471	14.0	1,971	11.2	146	0.8	98	0.6
2017	16,789	331	2.0	259	1.5	336	2.0	1,088	6.5	70	0.4	256	1.5	323	1.9	9,338	55.6	2,528	15.1	1,900	11.3	150	0.9	73	0.4
2018	15,590	290	1.9	226	1.4	288	1.8	1,077	6.9	74	0.5	239	1.5	314	2.0	8,617	55.3	2,317	14.9	1,798	11.5	139	0.9	56	0.4
2019	14,460	278	1.9	226	1.6	314	2.2	983	6.8	76	0.5	210	1.5	358	2.5	7,746	53.6	2,288	15.8	1,690	11.7	104	0.7	62	0.4
2020	12,739	207	1.6	80	0.6	203	1.6	787	6.2	34	0.3	190	1.5	199	1.6	7,096	55.7	2,102	16.5	1,583	12.4	124	1.0	50	0.4
2021	11,519	195	1.7	124	1.1	205	1.8	725	6.3	42	0.4	142	1.2	140	1.2	6,320	54.9	1,986	17.2	1,398	12.1	99	0.9	60	0.5
2022	10,235	188	1.8	105	1.0	181	1.8	623	6.1	31	0.3	139	1.4	108	1.1	5,499	53.7	1,820	17.8	1,303	12.7	96	0.9	68	0.7
2022年																									
Age group																									
0～9	29	-	-	-	-	-	-	-	-	-	-	14	48.3	-	-	12	41.4	1	3.4	1	3.4	1	3.4	-	-
10～19	77	2	2.6	20	26.0	1	1.3	6	7.8	-	-	12	15.6	2	2.6	31	40.3	1	1.3	1	1.3	-	-	-	-
20～29	777	28	3.6	75	9.7	2	0.3	193	24.8	-	-	14	1.8	21	2.7	373	48.0	21	2.7	16	2.1	9	1.2	3	0.4
30～39	503	15	3.0	8	1.6	1	0.2	101	20.1	1	0.2	8	1.6	12	2.4	303	60.2	14	2.8	29	5.8	4	0.8	5	1.0
40～49	546	26	4.8	-	-	6	1.1	116	21.2	2	0.4	18	3.3	13	2.4	299	54.8	20	3.7	33	6.0	3	0.5	5	0.9
50～59	733	32	4.4	-	-	16	2.2	113	15.4	2	0.3	15	2.0	13	1.8	387	52.8	52	7.1	85	11.6	10	1.4	4	0.5
60～69	921	26	2.8	-	-	18	2.0	75	8.1	1	0.1	17	1.8	14	1.5	475	51.6	118	12.8	150	16.3	13	1.4	6	0.7
70～79	2,066	28	1.4	-	-	84	4.1	19	0.9	9	0.4	22	1.1	11	0.5	1,064	51.5	387	18.7	400	19.4	20	1.0	8	0.4
80～89	3,159	23	0.7	1	0.0	45	1.4	-	-	9	0.3	16	0.5	15	0.5	1,754	55.5	774	24.5	460	14.6	22	0.7	26	0.8
90～	1,424	8	0.6	1	0.1	8	0.6	-	-	7	0.5	3	0.2	7	0.5	801	56.3	432	30.3	128	9.0	14	1.0	11	0.8

TB: tuberculosis

*1 有症状: 咳・痰・血痰・咯血等の「呼吸器症状」や、喘鳴、胸痛、背部痛、息切れ、発熱、寝汗、全身倦怠、体重減少等の「その他の症状」を有する場合。

TB symptoms: Respiratory symptoms such as cough, sputum expectoration, bloody sputum, and hemoptysis; and other symptoms such as wheezing, chest pain, back pain, dyspnea, fever, night sweating, fatigue tendency, and weight
総数には、その他集団検診 43名、登録中の健康診断 31名がある。

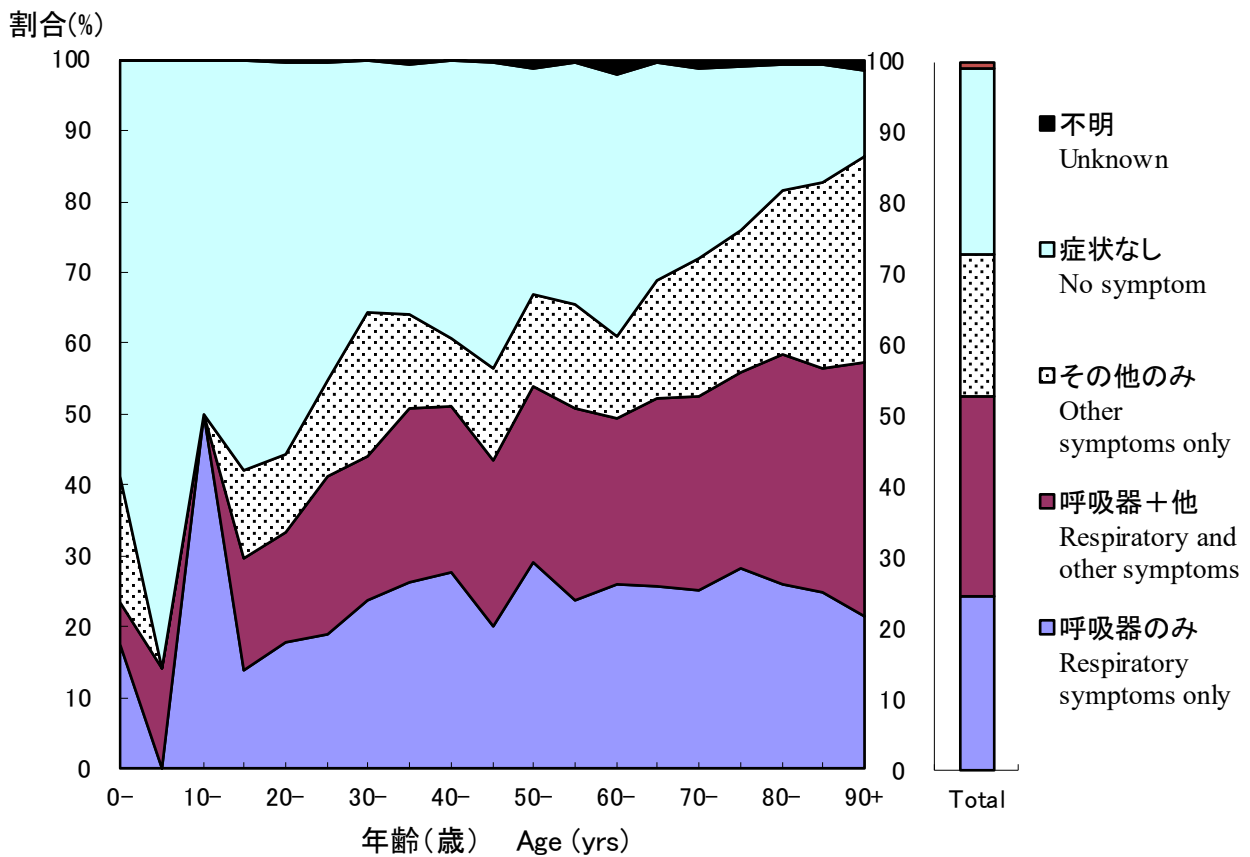


図 1 新登録肺結核中年齢5歳階層別症状の有無、2022年

Fig.1 Proportion of symptoms among newly notified pulmonary tuberculosis patients by 5- years age group, in 2022

呼吸器症状は咳、痰、血痰、喀血を含む。その他の症状は喘鳴、胸痛、背部痛、息切れ、発熱、寝汗、全身倦怠、体重減少を含む。

Respiratory symptoms include cough, sputum expectoration, bloody sputum, and hemoptysis. Other symptoms include wheezing, chest pain, back pain, dyspnea, fever, night sweating, fatigue tendency, and weight loss.

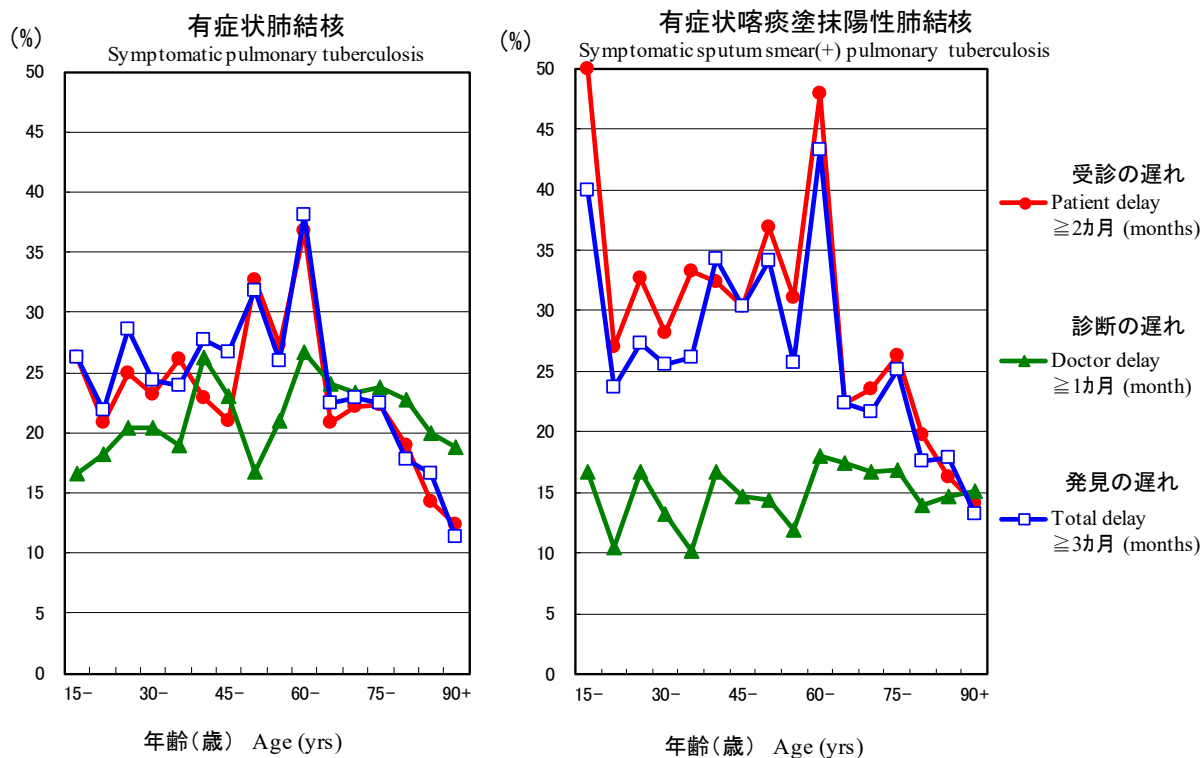


図 2 新登録有症状肺結核中年齢5歳階層別発見の遅れの割合、2022年

Fig.2 Proportion of patient delay, doctor delay and total delay among symptomatic pulmonary tuberculosis patients by 5-year age group, in 2022

受診の遅れ:「発病の時期」(結核の症状が初めて自覚された時期)から「初診の時期」(結核による症状を訴えて初めて医療機関を受診した時期)までの期間が2ヵ月以上である場合。

Patient delay: time interval from the onset of symptoms to the first visit to a medical institution of 2 months or longer

診断の遅れ:「初診の時期」から「診断の時期」(結核と診断された時期)までの期間が1ヵ月以上である場合。

Doctor delay: time interval from the first visit to a medical institution to the diagnosis of tuberculosis of 1 month or longer

発見の遅れ:「発病の時期」から「診断の時期」までの期間が3ヵ月以上である場合。

Total delay: time interval from the onset of symptoms to the diagnosis of tuberculosis is 3 months or longer

旧表 新登録結核患者の発見方法、年齢階層別、2022年

Previous table Proportion of mode of detection among newly notified TB patients by age group, 2022													
年齢階層 Age groups	新登録患者 Newly notified TB patients	個別健診 Individual medical checkup	定期健診 Mass screening				接触者健診 Contact examination		医療機関 Medical institutions			その他 Others	不明 Unknown
			学校 Schools	住民 Residents	職場 Employees	施設 Facilities	家族 Family	その他 Others	有症状受診 Outpatients with TB symptoms (*1)	入院中 Inpatients with other diseases	通院中 Outpatients with other diseases		
	n	%	%	%	%	%	%	%	%	%	%	%	%
全結核 All forms of TB													
総数 Total	10,235	1.8	1.0	1.8	6.1	0.3	1.4	1.1	53.7	17.8	12.7	0.9	0.7
0-14	35	0.0	0.0	0.0	0.0	0.0	54.3	0.0	37.1	2.9	2.9	2.9	0.0
15-19	71	2.8	28.2	1.4	8.5	0.0	9.9	2.8	42.3	1.4	1.4	0.0	0.0
20-24	368	3.5	15.5	0.3	25.5	0.0	2.4	3.0	41.3	2.2	0.8	1.4	0.0
25-29	409	3.7	4.4	0.2	24.2	0.0	1.2	2.4	54.0	3.2	3.2	1.0	0.7
30-34	276	3.3	2.2	0.0	18.8	0.4	2.5	2.9	60.1	2.5	5.8	0.4	0.7
35-39	227	2.6	0.9	0.4	21.6	0.0	0.4	1.8	60.4	3.1	5.7	1.3	1.3
40-44	252	6.0	0.0	1.2	21.8	0.8	2.0	1.6	54.0	3.2	6.3	1.2	1.2
45-49	294	3.7	0.0	1.0	20.7	0.0	4.4	3.1	55.4	4.1	5.8	0.0	0.7
50-54	372	4.3	0.0	3.2	15.1	0.3	1.3	1.9	55.4	4.8	11.0	1.3	0.5
55-59	361	4.4	0.0	1.1	15.8	0.3	2.8	1.7	50.1	9.4	12.2	1.4	0.6
60-64	381	4.2	0.0	1.6	13.4	0.0	1.8	1.3	46.2	13.1	15.5	1.0	1.0
65-69	540	1.9	0.0	2.2	4.4	0.2	1.9	1.7	55.4	12.6	16.9	1.7	0.4
70-74	911	0.9	0.0	4.3	1.5	0.5	0.8	0.8	51.4	17.1	20.3	1.1	0.4
75-79	1,155	1.7	0.0	3.9	0.4	0.3	1.3	0.3	51.6	20.0	18.6	0.9	0.3
80-84	1,453	1.0	0.1	2.1	0.0	0.1	0.6	0.2	54.4	23.1	16.6	0.5	1.0
85-89	1,706	0.5	0.0	0.8	0.0	0.5	0.4	0.7	56.4	25.7	12.8	0.9	0.7
90+	1,424	0.6	0.1	0.6	0.0	0.5	0.2	0.5	56.3	30.3	9.0	1.0	0.8
(再掲) 喀痰塗抹陽性肺結核 (Re-count) Sputum smear positive pulmonary TB													
総数 Total	3,703	1.3	0.8	1.4	4.0	0.4	0.6	0.4	59.9	18.4	10.9	0.7	0.5
0-14	2	0.0	0.0	0.0	0.0	0.0	0.0	0.0	50.0	50.0	0.0	0.0	0.0
15-19	17	0.0	29.4	0.0	11.8	0.0	5.9	0.0	47.1	0.0	0.0	0.0	0.0
20-24	99	3.0	16.2	0.0	25.3	0.0	1.0	0.0	50.5	0.0	0.0	1.0	0.0
25-29	99	4.0	4.0	0.0	19.2	0.0	0.0	0.0	67.7	2.0	2.0	1.0	0.0
30-34	66	3.0	3.0	0.0	9.1	0.0	0.0	1.5	71.2	4.5	6.1	0.0	1.5
35-39	70	5.7	1.4	0.0	11.4	0.0	0.0	0.0	71.4	5.7	2.9	1.4	0.0
40-44	74	2.7	0.0	1.4	16.2	2.7	0.0	1.4	64.9	2.7	6.8	1.4	0.0
45-49	95	3.2	0.0	1.1	14.7	0.0	2.1	1.1	66.3	5.3	4.2	0.0	0.0
50-54	132	2.3	0.0	1.5	8.3	0.0	2.3	0.0	65.9	9.8	8.3	0.8	0.0
55-59	132	2.3	0.0	0.8	16.7	0.0	3.8	0.8	54.5	8.3	9.1	1.5	1.5
60-64	124	2.4	0.0	0.8	12.1	0.0	0.8	0.8	56.5	12.1	10.5	0.8	1.6
65-69	193	1.0	0.0	0.5	3.6	0.5	0.0	1.0	64.8	10.9	13.0	2.6	0.0
70-74	337	0.3	0.0	3.9	1.8	0.3	0.6	0.0	59.1	17.8	14.5	0.0	0.6
75-79	419	1.7	0.0	2.6	0.2	0.0	0.7	0.2	55.4	22.0	15.5	0.5	0.2
80-84	555	0.9	0.0	1.4	0.0	0.0	0.4	0.2	58.2	22.2	15.7	0.2	0.5
85-89	686	0.6	0.0	1.2	0.0	0.9	0.3	0.1	60.3	23.5	11.5	0.6	0.3
90+	603	0.3	0.2	0.5	0.0	0.8	0.2	0.5	59.9	27.7	7.8	1.0	0.8

TB: tuberculosis

*1 有症状: 咳・痰・血痰・喀血等の「呼吸器症状」や、喘鳴、胸痛、背部痛、息切れ、発熱、寝汗、全身倦怠、体重減少等の「その他の症状」を有する場合。

TB symptoms: Respiratory symptoms such as cough, sputum expectoration, bloody sputum, and hemoptysis; and other symptoms such as wheezing, chest pain, back pain, dyspnea, fever, night sweating, fatigue tendency, and weight loss.

旧表改訂 新登録結核患者数、職業・性・年齢階層別、2022年

Previous table Number of newly notified TB patients by occupation, sex and age group, 2022

性/年齢	総数	接客業	看護師 /保健師	医師	他医療 従事者	教員/ 保育士	生徒/ 学生	他常用 勤労者	他臨時 /日雇	他自営/ 自由業	家事従 事者	保育園児/ 幼稚園児/ 他の乳幼児	無職/ 他	不明
Sex/Age group	Total	Service workers	Nurses/P ublic health nurses	Medical doctors	Other medical workers	Teachers/ Nursery nurses	Pupils/St udents	Other regular workers	Other temporar y/daily workers	Other self- employed	Housekee pers	Infants/ Little children	Jobless/ Others	Unknown
男 Male	6,058	97	8	18	50	17	134	1,006	179	320	6	8	4,018	197
0-14	12	0	0	0	0	0	4	0	0	0	0	8	0	0
15-19	32	0	0	0	0	0	25	3	1	0	0	0	3	0
20-24	196	7	0	0	4	0	62	75	8	2	0	0	33	5
25-29	215	8	0	0	13	0	28	114	13	2	0	0	28	9
30-39	247	12	3	2	6	4	13	138	14	13	1	0	36	5
40-49	304	18	5	0	9	2	0	161	13	32	0	0	48	16
50-59	493	23	0	4	5	6	1	224	29	56	0	0	123	22
60-69	646	13	0	5	5	4	0	193	42	56	0	0	295	33
70-79	1,419	13	0	4	8	1	0	88	50	103	3	0	1,094	55
80+	2,494	3	0	3	0	0	1	10	9	56	2	0	2,358	52
女 Female	4,177	98	105	2	142	31	133	349	128	67	61	16	2,949	96
0-14	23	0	0	0	0	0	5	0	0	0	0	16	2	0
15-19	39	0	0	0	0	0	31	4	0	1	0	0	3	0
20-24	172	6	4	0	10	1	70	35	15	2	0	0	27	2
25-29	194	9	8	1	27	2	23	58	19	4	2	0	34	7
30-39	256	20	22	0	23	4	4	71	26	4	12	0	56	14
40-49	242	21	28	0	26	10	0	71	23	4	8	0	39	12
50-59	240	18	22	0	29	8	0	63	14	11	13	0	57	5
60-69	275	9	19	1	19	5	0	29	14	10	10	0	151	8
70-79	647	11	1	0	7	1	0	15	15	14	11	0	547	25
80+	2,089	4	1	0	1	0	0	3	2	17	5	0	2,033	23

旧表 職業別、20～59歳新登録肺結核患者の発見方法別割合、2022年

Previous table Proportion of mode of detection among newly notified pulmonary TB patients aged 20-59 years by occupation, 2022

	肺結核 Pulmonary TB patients	個別健 診 Individual medical checkup	定期健診 Mass screening			接触者健診 Contact examination		医療機関 Clinics/Hospitals			その他/ 不明 Others/Un known
			住民 職場 学校/施 Residents Employe Schools/F es acilities			家族 其他	有症状 受診(*2)	入院中	通院中		
			%	%	%	%	%	%	%	%	
総数 Total	1,984	4.8	1.1	25.3	4.4	2.7	2.8	46.7	3.7	5.2	3.2
接客業 Service workers	104	4.8	1.9	15.4	0.0	2.9	0.0	65.4	1.9	6.7	1.0
医療関係者 Medical workers(*1)	199	6.5	1.0	36.2	0.0	1.5	9.5	37.2	2.5	3.5	2.0
教員・保育士 Teachers/ Nursery nurses	29	10.3	3.4	20.7	0.0	0.0	3.4	62.1	0.0	0.0	0.0
学生 Students	177	5.6	0.6	0.0	46.3	2.8	2.8	33.3	0.0	1.1	7.3
他の常用勤労者 Other regular workers	780	4.4	0.5	39.9	0.1	3.1	2.8	41.8	2.9	2.8	1.7
他の臨時・日雇 Other temporary/ daily workers	139	7.2	1.4	21.6	0.0	0.0	2.2	56.8	1.4	5.0	4.3
他の自営自由業 Other self-employed	103	5.8	3.9	7.8	0.0	4.9	1.0	55.3	3.9	14.6	2.9
家事 Housekeepers	28	10.7	0.0	7.1	0.0	7.1	0.0	57.1	7.1	10.7	0.0
無職・その他 Jobless/ Others	359	1.9	1.4	14.8	1.1	2.5	1.1	52.4	9.5	10.3	5.0
不明 Unknown	66	7.6	0.0	6.1	0.0	4.5	0.0	63.6	3.0	6.1	9.1

*1 医療関係者：看護師・保健師・助産師、医師、その他医療職含む。

Medical workers include nurses, public health nurses, medical doctors and dentists, physical therapists, occupational therapists, medical technologists, radiographers, and co-medicals.

*2 有症状：咳・痰・血痰・喀血等の「呼吸器症状」や、喘鳴、胸痛、背部痛、息切れ、発熱、寝汗、全身倦怠、体重減少等の「その他の症状」を有する場合。
TB symptoms: Respiratory symptoms such as cough, sputum expectoration, bloody sputum, and hemoptysis; and other symptoms such as wheezing, chest pain, back pain, dyspnea, fever, night sweating, fatigue tendency, and weight loss.

【診断時病状】

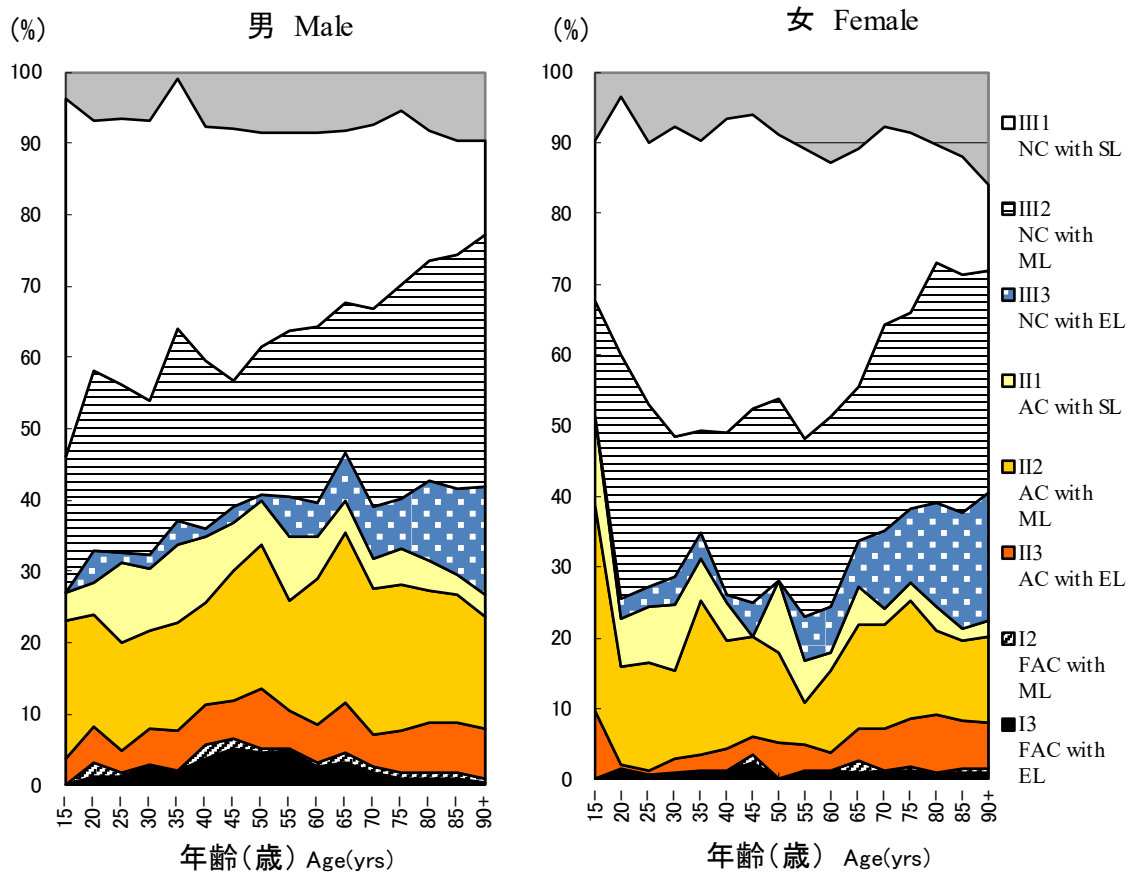


図 3 新登録肺結核患者中胸部X線写真学会分類別所見割合，性・年齢5 歳階級別，2022 年

Fig.3 Proportion of cases classified by X-ray classification by sex and 5-yearage group, 2022

NC : Non-cavitary SL : Slight lesion AC : Advanced cavitary ML : Moderate lesion

FAC: Far-advance cavitary EL : Extensive lesion

表2 新登録結核患者中「HIV合併あり」と報告された患者数、性・年齢層別、2022年および2007～2022年
Table 2 Number of newly notified tuberculosis patients with HIV infection, by sex and age group, 2022 and 2007～2022

年齢階層 Age group	喀痰塗抹陽性 Sputum smear positive		他結核菌陽性 Other bacteriologic ally- positive		菌陰性結核 Bacteriologically- negative		肺外結核 Extra-pulmonary		総数 Total	
	男 M	女 F	男 M	女 F	男 M	女 F	男 M	女 F	男 M	女 F
2022年 2022 Calendar year										
総計 Total	11 (1)	2 (1)	3	0	0	0	6 (3)	3 (2)	20 (4)	5 (3)
0-19	0	0	0	0	0	0	0	0	0	0
20-24	0	0	0	0	0	0	0	0	0	0
25-29	0	0	0	0	0	0	1 (1)	0	1 (1)	0
30-34	0	1 (1)	0	0	0	0	1	1 (1)	1	2 (2)
35-39	0	0	0	0	0	0	1 (1)	0	1 (1)	0
40-44	0	1	0	0	0	0	0	0	0	1
45-49	1	0	0	0	0	0	1	1 (1)	2	1 (1)
50-54	1	0	0	0	0	0	1 (1)	0	2 (1)	0
55-59	2 (1)	0	1	0	0	0	1	0	4 (1)	0
60-64	3	0	0	0	0	0	0	0	3	0
65-69	0	0	1	0	0	0	0	0	1	0
70-74	0	0	1	0	0	0	0	0	1	0
75-79	0	0	0	0	0	0	0	0	0	0
80+	4	0	0	0	0	0	0	1	4	1
2007～2022年 2007-2022 Calendar year										
総計 Total	205 (28)	52 (25)	116 (30)	19 (13)	54 (12)	11 (8)	244 (58)	37 (22)	619 (128)	119 (68)
0-19	1 (1)	0	0	0	1 (1)	0	3	0	5 (2)	0
20-24	10 (8)	0	4 (3)	1 (1)	1 (1)	1 (1)	3 (2)	1	18 (14)	3 (2)
25-29	10 (5)	8 (7)	7 (3)	2 (2)	1 (1)	2 (2)	20 (9)	1 (1)	38 (18)	13 (12)
30-34	15 (5)	7 (6)	13 (2)	5 (4)	4 (2)	1 (1)	30 (10)	7 (5)	62 (19)	20 (16)
35-39	25 (2)	4 (3)	21 (6)	3 (3)	9 (2)	3 (3)	41 (13)	6 (5)	96 (23)	16 (14)
40-44	32 (2)	8 (5)	16 (5)	0	11 (3)	3 (1)	45 (15)	8 (6)	104 (25)	19 (12)
45-49	20 (2)	3 (3)	15 (7)	1 (1)	6 (1)	0	37 (6)	3 (1)	78 (16)	7 (5)
50-54	19 (1)	1	12 (2)	2 (1)	6 (1)	0	19 (2)	1 (1)	56 (6)	4 (2)
55-59	13 (1)	0	8 (2)	0	4	0	12	3 (3)	37 (3)	3 (3)
60-64	22	1	6	1 (1)	3	0	10	0	41	2 (1)
65-69	10	1 (1)	7	0	5	0	11 (1)	1	33 (1)	2 (1)
70-74	6 (1)	3	4	2	1	0	7	2	18 (1)	7
75-79	7	1	0	0	1	0	3	2	11	3
80+	15	15	3	2	1	1	3	2	22	20

(): 外国人患者の再掲 Re-count of foreigners

HIV : Human Immunodeficiency Virus. M : male patients, F : female patients.

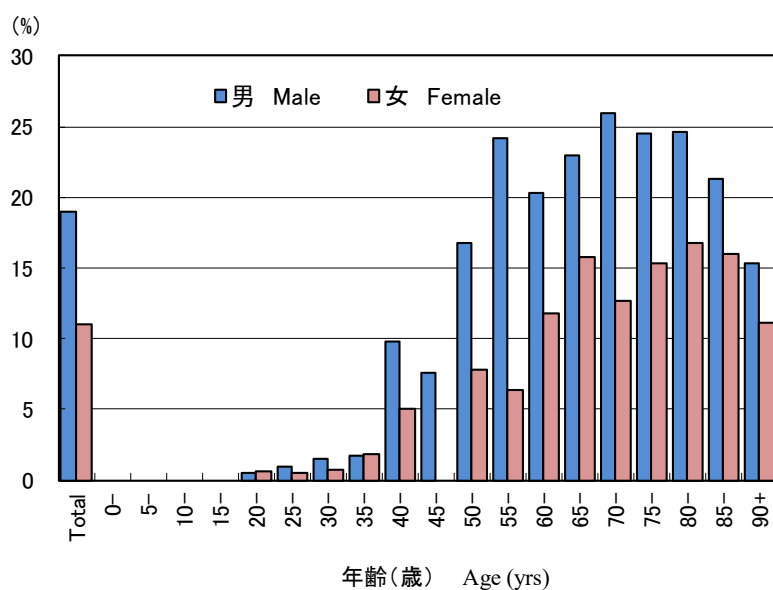


図4 新登録結核患者中「糖尿病合併あり」と報告された患者の割合、性・年齢層別、2022年
Fig.4 Proportion of newly notified tuberculosis patients with diabetes mellitus in each age-group by sex, 2022

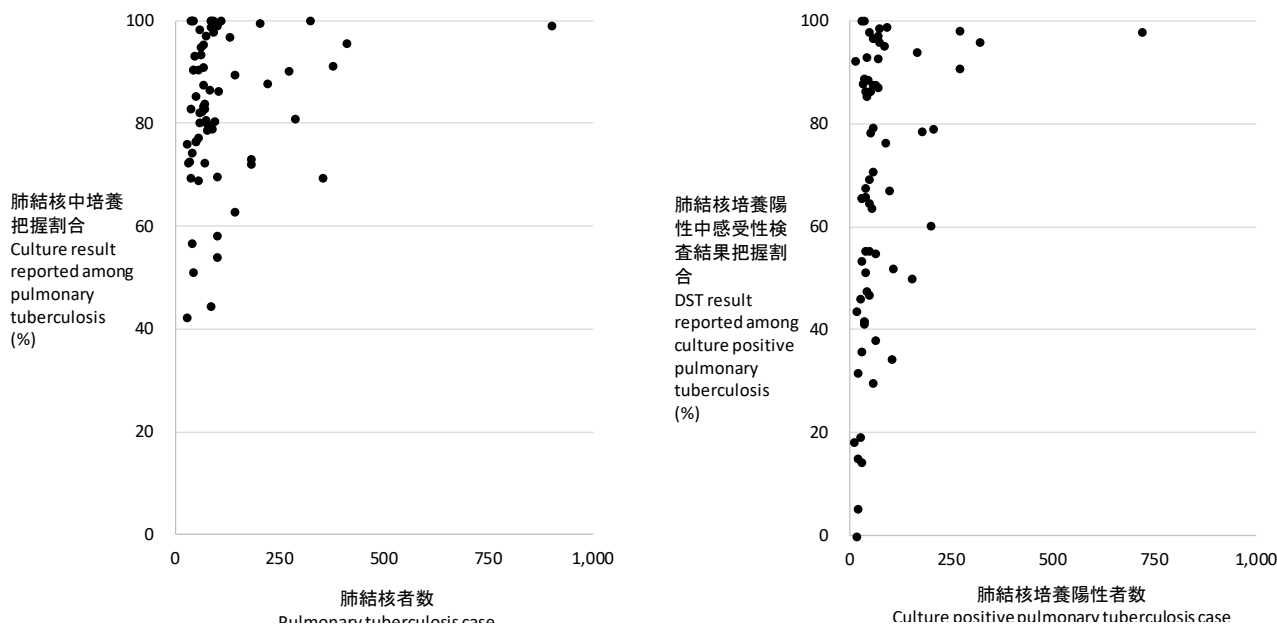
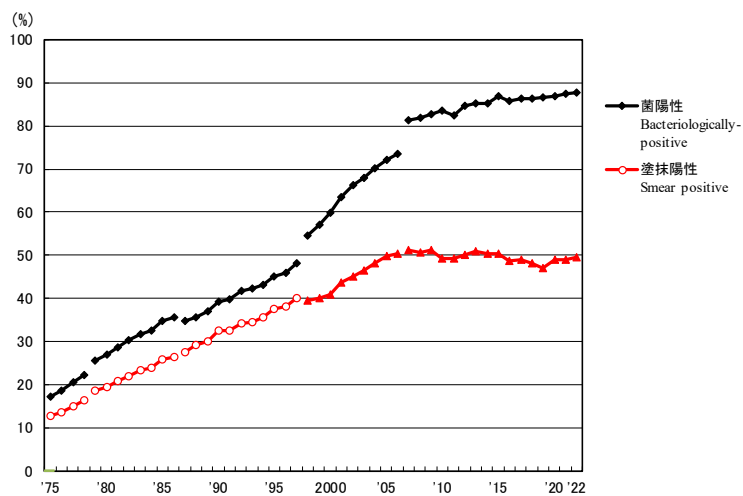


図5 新登録肺結核患者数とその内培養把握割合の散布図(左)、及び新登録肺結核培養陽性者数とその内感受性検査結果把握割合の散布図(右)、都道府県政令指定都市別、2022年
 Fig. 5 Scatter plot of culture results reported among pulmonary tuberculosis patients and anti-tuberculosis drug susceptibility test results among newly notified pulmonary tuberculosis patients, by prefecture and major city, 2022



旧図 新登録肺結核患者中菌陽性割合の推移、1975～2022年

Previous Fig
 Proportion of bacteriologically confirmed cases among newly notified pulmonary tuberculosis patients, 1975-2022

資料と対象 Sources of information and subjects:

結核登録者の定期報告 Annual tuberculosis reports from public health centers

1975-1978: 全結核 All forms of tuberculosis

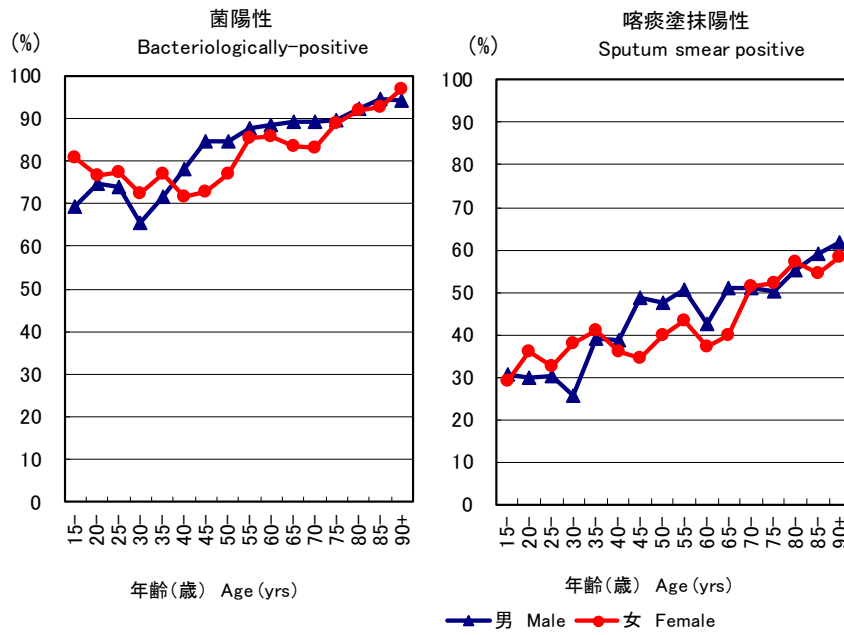
1979-1986: 肺結核 Pulmonary tuberculosis

電算化結核サーベイランスシステム Nationwide computerized tuberculosis surveillance system

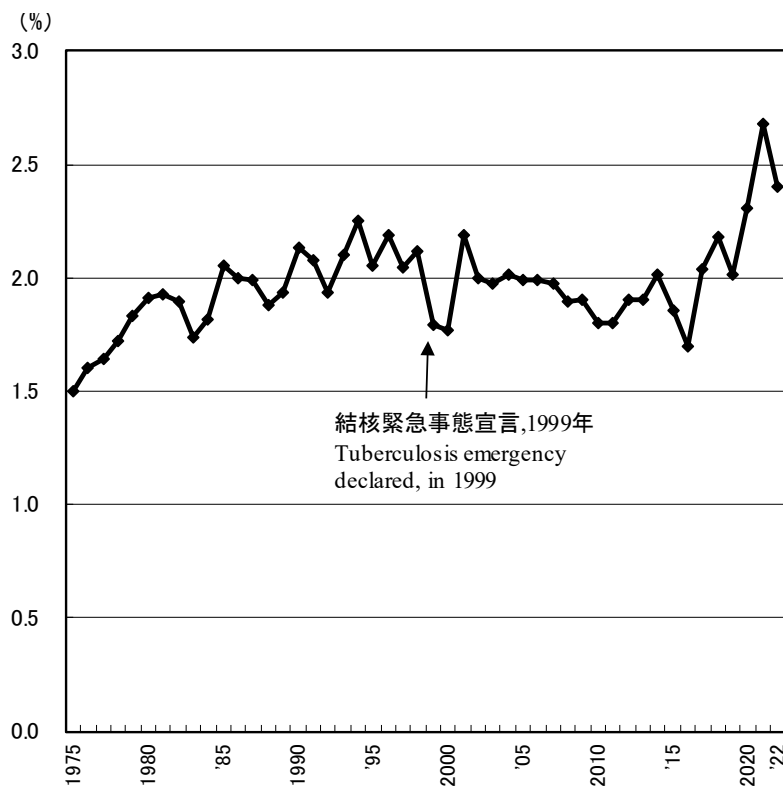
1987-1997: 肺結核 Pulmonary Tuberculosis

1998-2006: 肺結核(活動性分類の変更) Pulmonary tuberculosis (New patient criteria for notification were applied)

2007-2009: 肺結核(核酸増幅法項目の追加) Pulmonary tuberculosis (Item of nucleic acid amplification was added)



旧図 新登録肺結核患者中菌陽性割合、性・年齢5歳階級別、2022年
 Previous Fig. Proportion of bacteriologically confirmed cases among newly notified pulmonary tuberculosis patients by sex and 5-year age group, 2022



旧図 新登録肺結核患者中胸部X線写真での広汎空洞型割合の推移、1975~2022年
 Previous Fig. Proportion of far-advanced cavitary cases among newly notified pulmonary Tuberculosis patients, 1975-2022

旧表 性・職業別、30～59歳新登録肺結核患者中有空洞あるいは／かつ喀痰塗抹陽性の割合、2022年
 Previous table Proportion of cavitory or/and sputum smear positive cases among newly notified pulmonary TB patients aged 30-59 years, 2022

	男 Male								女 Female							
	肺結核 Pulmonary TB	有空洞あるいは 喀痰塗抹陽性 Cavitory or sputum smear(+)			有空洞かつ 喀痰塗抹陽性 Cavitory and sputum smear(+)			肺結核 Pulmonary TB	有空洞あるいは 喀痰塗抹陽性 Cavitory or sputum smear(+)			有空洞かつ 喀痰塗抹陽性 Cavitory and sputum smear(+)				
		n	%	Ratio	n	%	Ratio		n	%	Ratio	n	%	Ratio		
接客業 Service workers	35	20	57.1	1.4	7	20.0	1.2	46	25	54.3	1.6	9	19.6	2.9		
医療職 Medical workers	29	12	41.4	1.0	5	17.2	1.0	117	39	33.3	1.0	8	6.8	1.0		
教員・保育士 Teachers/ Nursery nurses	12	3	25.0	0.6	2	16.7	1.0	14	6	42.9	1.3	0	0.0	0.0		
他の常用勤労者 Other regular workers	418	198	47.4	1.1	89	21.3	1.2	145	71	49.0	1.5	22	15.2	2.2		
他の臨時・日雇 Other temporary/ daily workers	49	34	69.4	1.7	17	34.7	2.0	48	27	56.3	1.7	10	20.8	3.0		
他の自営自由 Other self- employed	78	49	62.8	1.5	29	37.2	2.2	16	9	56.3	1.7	3	18.8	2.7		
無職 Jobless	145	94	64.8	1.6	49	33.8	2.0	79	45	57.0	1.7	20	25.3	3.7		
その他 Others	73	36	49.3	1.2	22	30.1	1.7	60	28	46.7	1.4	9	15.0	2.2		
総数 Total	839	446	53.2		220	26.2		525	250	47.6		81	15.4			

その他:家事、学生、不明 Others:Houskeepers/ Students/ Unknown

Ratio: 医療職の割合に対するその他職業の割合の比 The ratio of each proportion to that of medical workers

旧表 新登録肺結核患者の薬剤感受性検査結果、性・年齢別、2022年および2007～2022年

Previous table Drug susceptibility test results among newly notified pulmonary tuberculosis patients, by sex and age group, 2022 and 2007-2022

年齢 Age group	総数 Total										初回治療(再掲) New treatment (Re-count)									
	男 Male					女 Female					男 Male					女 Female				
	感受性結 果把握	多剤耐 性	INH耐 性	RFP耐 性	1剤以 上耐性 *	感受性結 果把握	多剤耐 性	INH耐 性	RFP耐 性	1剤以 上耐性 *	感受性結 果把握	多剤耐 性	INH耐 性	RFP耐 性	1剤以 上耐性 *	感受性結 果把握	多剤耐 性	INH耐 性	RFP耐 性	1剤以 上耐性 *
DST result obtained	MDR	Any INH resista nce	Any RFP resista nce	Any resista nce	DST result obtained	MDR	Any INH resista nce	Any RFP resista nce	Any resista nce	DST result obtained	MDR	Any INH resista nce	Any RFP resista nce	Any resista nce	DST result obtained	MDR	Any INH resista nce	Any RFP resista nce	Any resista nce	
2022年 2022 Calendar year																				
総数 Total	2,574	16	137	25	287	1,512	10	63	16	151	2,438	13	127	18	266	1,461	8	55	14	141
0-19	12	2	3	2	3	21	1	2	1	2	12	2	3	2	3	21	1	2	1	2
20-29	148	3	10	3	20	137	6	15	9	26	145	3	10	3	20	134	4	13	7	23
30-39	86	3	5	4	17	85	1	6	1	12	82	2	4	3	15	81	1	6	1	11
40-49	152	1	12	1	22	85	0	3	1	10	143	1	11	1	21	79	0	1	1	8
50-59	235	0	11	2	25	97	2	5	2	11	221	0	11	1	24	95	2	5	2	11
60-69	298	1	14	2	37	90	0	3	0	8	276	1	13	2	35	87	0	3	0	8
70-79	613	5	35	9	77	213	0	7	0	21	581	3	30	5	66	208	0	7	0	21
80+	1,030	1	47	2	86	784	0	22	2	61	978	1	45	1	82	756	0	18	2	57
2007～2021年 2007-2021 Calendar year																				
総数 Total	69,152	504	3,564	755	8,074	37,719	302	1,711	395	3,701	63,472	342	2,997	525	7,131	35,644	203	1,438	279	3,301
0-19	529	14	55	17	112	453	4	39	5	83	508	11	52	14	109	430	4	37	5	78
20-29	3,806	84	324	109	673	3,187	95	276	119	550	3,650	66	293	86	631	3,054	70	243	90	504
30-39	3,832	42	258	63	617	3,006	51	218	65	436	3,639	31	240	52	581	2,891	40	197	50	401
40-49	5,201	47	289	72	693	2,607	27	140	39	323	4,894	37	262	54	630	2,479	18	123	29	295
50-59	7,330	63	412	110	1,039	2,196	27	110	37	249	6,837	37	358	72	940	2,073	12	84	21	216
60-69	11,254	72	595	129	1,461	3,147	20	158	26	361	10,367	52	501	90	1,285	2,968	14	129	18	316
70-79	15,105	98	783	142	1,797	6,477	32	280	41	636	13,718	53	616	83	1,539	6,048	15	231	21	564
80+	22,095	84	848	113	1,682	16,646	46	490	63	1,063	19,859	55	675	74	1,416	15,701	30	394	45	927
2007～2021年 2007-2021 Calendar year																				
総数 Total	100%	0.7	5.2	1.1	11.7	100%	0.8	4.5	1.0	9.8	100%	0.5	4.7	0.8	11.2	100%	0.6	4.0	0.8	9.3
0-19	100	2.6	10.4	3.2	21.2	100	0.9	8.6	1.1	18.3	100	2.2	10.2	2.8	21.5	100	0.9	8.6	1.2	18.1
20-29	100	2.2	8.5	2.9	17.7	100	3.0	8.7	3.7	17.3	100	1.8	8.0	2.4	17.3	100	2.3	8.0	2.9	16.5
30-39	100	1.1	6.7	1.6	16.1	100	1.7	7.3	2.2	14.5	100	0.9	6.6	1.4	16.0	100	1.4	6.8	1.7	13.9
40-49	100	0.9	5.6	1.4	13.3	100	1.0	5.4	1.5	12.4	100	0.8	5.4	1.1	12.9	100	0.7	5.0	1.2	11.9
50-59	100	0.9	5.6	1.5	14.2	100	1.2	5.0	1.7	11.3	100	0.5	5.2	1.1	13.7	100	0.6	4.1	1.0	10.4
60-69	100	0.6	5.3	1.1	13.0	100	0.6	5.0	0.8	11.5	100	0.5	4.8	0.9	12.4	100	0.5	4.3	0.6	10.6
70-79	100	0.6	5.2	0.9	11.9	100	0.5	4.3	0.6	9.8	100	0.4	4.5	0.6	11.2	100	0.2	3.8	0.3	9.3
80+	100	0.4	3.8	0.5	7.6	100	0.3	2.9	0.4	6.4	100	0.3	3.4	0.4	7.1	100	0.2	2.5	0.3	5.9

DST: Drug susceptibility test. MDR: Multi-drug resistance, i.e., resistant to at least INH and RFP. INH: Isoniazid. RFP: Rifampicin.

*: 2012年以降はINH, RFP, SM EBの4剤のうちのいずれかに耐性

旧表 新登録肺結核患者の薬剤感受性検査結果および耐性率、性・年齢別、2007～2022年（再掲；外国人）

Previous table Drug susceptibility test results among newly notified pulmonary tuberculosis patients, by sex and age group, 2007-2022 (Re-count of foreigners)

年齢 Age group	総数 Total										初回治療(再掲) New treatment (Re-count)									
	男 Male					女 Female					男 Male					女 Female				
	感受性結果把握 DST result obtained	多剤耐性 MDR	INH耐性 Any INH resistance	RFP耐性 Any RFP resistance	1剤以上耐性* Any resistance	感受性結果把握 DST result obtained	多剤耐性 MDR	INH耐性 Any INH resistance	RFP耐性 Any RFP resistance	1剤以上耐性* Any resistance	感受性結果把握 DST result obtained	多剤耐性 MDR	INH耐性 Any INH resistance	RFP耐性 Any RFP resistance	1剤以上耐性* Any resistance	感受性結果把握 DST result obtained	多剤耐性 MDR	INH耐性 Any INH resistance	RFP耐性 Any RFP resistance	1剤以上耐性* Any resistance
2007～2022年	2007-2022 Calendar year																			
総数 Total	3,207	122	384	150	624	3,196	138	388	167	609	3,057	81	337	114	568	3,052	102	344	130	549
0-19	177	13	38	15	56	129	2	15	3	20	171	10	35	12	53	125	2	14	3	19
20-29	1,728	75	214	93	344	1,504	83	195	101	319	1,665	58	189	73	316	1,449	63	170	78	287
30-39	560	22	59	28	104	757	30	103	33	146	531	16	53	22	94	724	23	94	25	134
40-49	249	6	24	8	42	391	10	37	13	61	232	2	18	3	34	367	7	34	9	55
50-59	169	2	10	2	17	193	6	22	8	33	162	0	8	0	15	178	5	17	7	26
60-69	143	4	24	4	39	91	3	10	4	14	133	4	22	4	37	88	3	10	4	14
70-79	88	0	8	0	11	53	4	6	4	10	78	0	6	0	9	47	3	5	3	8
80+	93	0	7	0	11	78	0	0	1	6	85	0	6	0	10	74	0	0	1	6
2007～2022年	2007-2022 Calendar year																			
総数 Total	100%	3.8	12.0	4.7	19.5	100%	4.3	12.1	5.2	19.1	100%	2.6	11.0	3.7	18.6	100%	3.3	11.3	4.3	18.0
0-19	100	7.3	21.5	8.5	31.6	100	1.6	11.6	2.3	15.5	100	5.8	20.5	7.0	31.0	100	1.6	11.2	2.4	15.2
20-29	100	4.3	12.4	5.4	19.9	100	5.5	13.0	6.7	21.2	100	3.5	11.4	4.4	19.0	100	4.3	11.7	5.4	19.8
30-39	100	3.9	10.5	5.0	18.6	100	4.0	13.6	4.4	19.3	100	3.0	10.0	4.1	17.7	100	3.2	13.0	3.5	18.5
40-49	100	2.4	9.6	3.2	16.9	100	2.6	9.5	3.3	15.6	100	0.9	7.8	1.3	14.7	100	1.9	9.3	2.5	15.0
50-59	100	1.2	5.9	1.2	10.1	100	3.1	11.4	4.1	17.1	100	0.0	4.9	0.0	9.3	100	2.8	9.6	3.9	14.6
60-69	100	2.8	16.8	2.8	27.3	100	3.3	11.0	4.4	15.4	100	3.0	16.5	3.0	27.8	100	3.4	11.4	4.5	15.9
70-79	100	0.0	9.1	0.0	12.5	100	7.5	11.3	7.5	18.9	100	0.0	7.7	0.0	11.5	100	6.4	10.6	6.4	17.0
80+	100	0.0	7.5	0.0	11.8	100	0.0	0.0	1.3	7.7	100	0.0	7.1	0.0	11.8	100	0.0	0.0	1.4	8.1

DST: Drug susceptibility test. MDR: Multi-drug resistance, i.e., resistant to at least INH and RFP. INH: Isoniazid. RFP: Rifampicin.

*: 2012年はINH, RFP, SM EBの4剤のうちのいずれかに耐性