

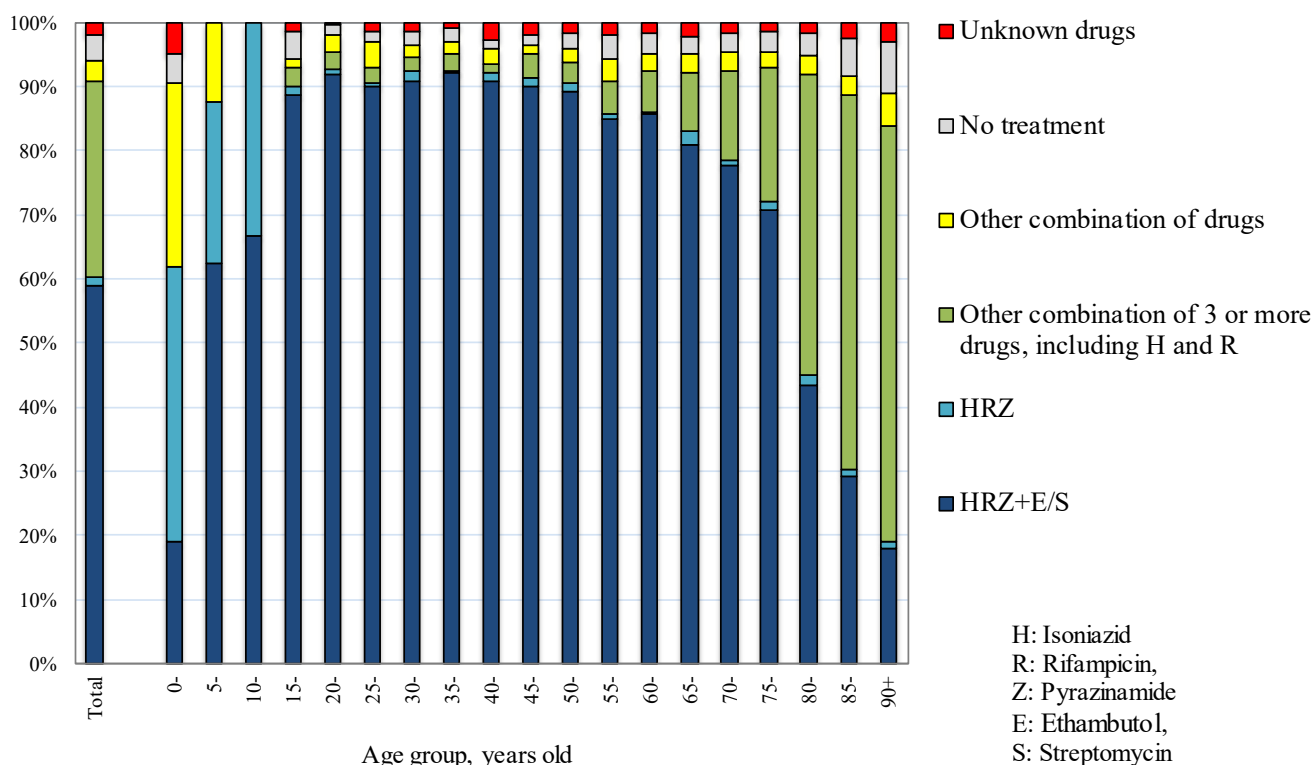
【Treatment 1】

Number of patients with TB on re-treatment, by year when previous TB treatment was initiated and age group, 2022

Year when previous TB treatment initiated	Total	Age group (years)								Previous TB treatment regimen unknown (re-count)
		0-19	20-29	30-39	40-49	50-59	60-69	70-79	80+	
Total	384	2	23	16	29	36	55	82	141	114
~1949	12	0	0	0	0	0	0	0	12	9
1950-59	31	0	0	0	0	0	0	5	26	22
1960-69	13	0	0	0	0	1	1	4	7	9
1970-79	18	0	0	0	0	0	1	11	6	13
1980-89	8	0	0	0	0	3	4	0	1	6
1990-99	18	0	0	2	2	2	3	2	7	9
2000-09	37	0	0	2	6	3	4	12	10	11
2010-19	122	1	12	5	14	13	21	20	36	21
2020-22	125	1	11	7	7	14	21	28	36	14
2010-2021 (re-count)										
2010	5	0	0	0	1	1	1	0	2	0
2011	4	0	1	0	0	0	1	0	2	0
2012	16	1	0	3	2	2	1	3	4	3
2013	9	0	0	0	2	1	2	1	3	3
2014	5	0	0	0	0	1	1	2	1	0
2015	11	0	0	0	0	1	5	0	5	2
2016	12	0	2	0	0	0	2	5	3	2
2017	17	0	0	1	1	3	2	2	8	4
2018	13	0	3	0	4	1	1	0	4	4
2019	30	0	6	1	4	3	5	7	4	3
2020	38	1	2	2	1	4	6	6	16	7
2021	58	0	4	2	4	7	12	15	14	5
2022	29	0	5	3	2	3	3	7	6	2

TB: tuberculosis

Fig.1 Anti-tuberculosis drugs upon notification by age group in 2022



Previous table Number of retreatment tuberculosis patients by previous tuberculosis treatment regimen and age group, 2022

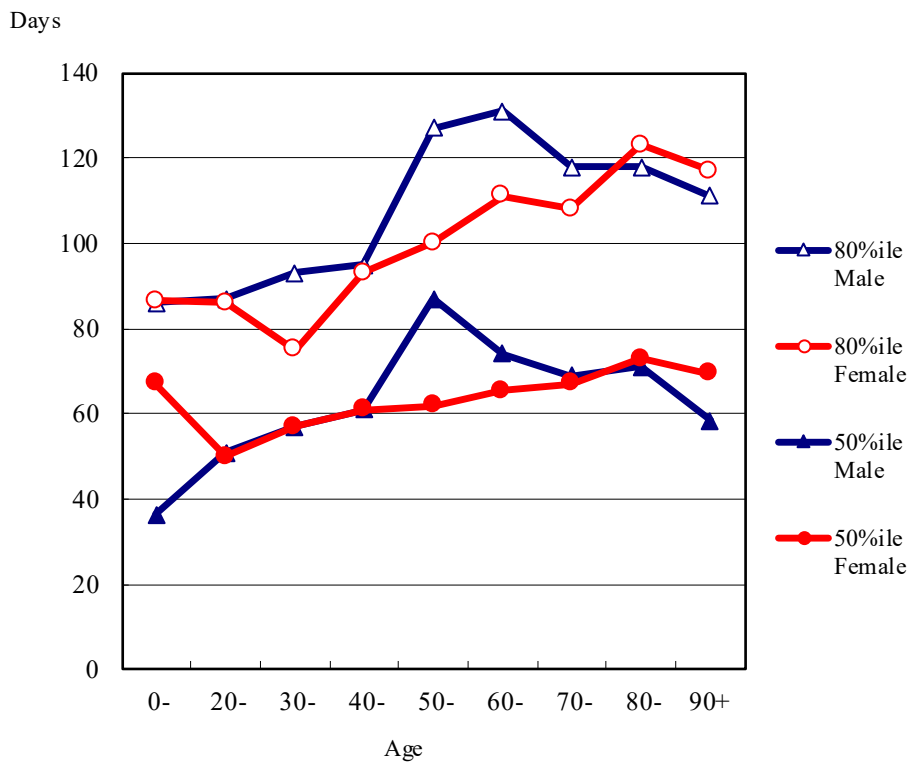
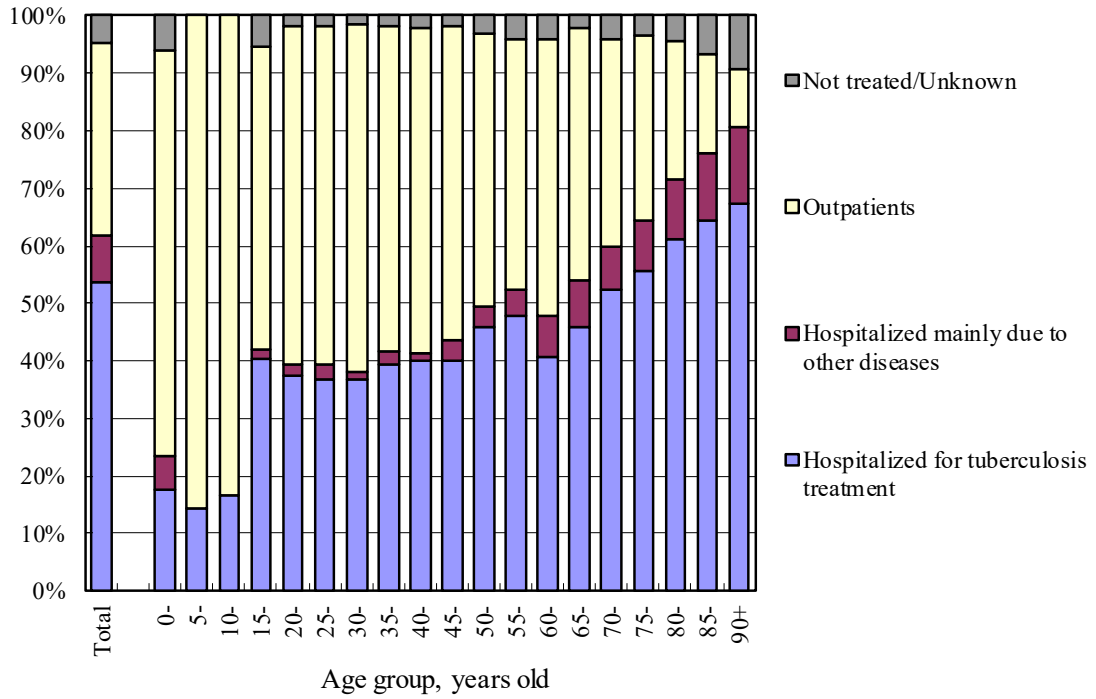
Age group	Retreatment	Previous treatment regimen				
		Regimen with HRZ	Other regimen with HR	Other regimen	LTBI treatment	Unknown
Total	384	118	65	27	60	114
0-4	0	0	0	0	0	0
5-9	0	0	0	0	0	0
10-14	0	0	0	0	0	0
15-19	2	0	0	0	1	1
20-24	12	8	1	0	2	1
25-29	11	3	1	0	4	3
30-34	8	3	1	0	0	4
35-39	8	1	0	0	4	3
40-44	16	8	2	0	5	1
45-49	13	6	0	0	2	5
50-54	16	5	5	0	4	2
55-59	20	8	3	0	5	4
60-64	24	9	4	1	4	6
65-69	31	12	3	1	5	10
70-74	35	14	5	1	6	9
75-79	47	15	7	5	5	15
80-84	47	14	7	5	4	17
85-89	51	9	13	8	4	17
90+	43	3	13	6	5	16

H : Isoniazid, R : Rifampicin, Z : Pyrazinamide

LTBI : Latent Tuberculosis Infection

【Treatment 2】

Fig.2 Proportion of the outpatients and the hospitalized patients by age group in 2022 (N=7,454)



Previous Fig. Median (50 percentile) and 80 percentile of duration of hospitalization among those hospitalized with tuberculosis and with known discharged day, new sputum-smear positive pulmonary tuberculosis patients in 2021 by sex and age group

Previous table Proportion (%) hospitalized among newly notified tuberculosis patients in 2022 by age group and patient classification

Age	Pulmonary TB									
	Total		Sputum smear positive		Other bacillary positive		Bacillary negative /unknown		Extra-pulmonary	
	Ht	Ho	Ht	Ho	Ht	Ho	Ht	Ho	Ht	Ho
Total	53.7	8.2	88.1	3.5	23.1	13.5	9.0	11.1	27.0	21.1
0-19	32.2	2.3	89.5	0.0	29.4	0.0	2.9	5.9	15.8	5.3
20-29	37.1	2.3	92.4	0.0	14.4	2.2	5.3	5.3	12.7	8.9
30-39	38.0	1.8	89.7	1.5	12.4	2.2	5.5	1.8	8.3	5.0
40-49	40.0	2.6	89.3	0.6	9.6	3.2	1.1	5.4	14.1	8.6
50-59	47.0	3.9	87.5	1.9	14.5	5.6	3.5	5.8	11.2	16.0
60-69	43.7	7.7	83.3	3.5	13.2	12.3	4.7	7.0	17.6	22.2
70-79	54.2	8.3	87.6	4.4	21.9	12.0	11.2	13.6	25.9	18.5
80-89	62.9	11.2	89.3	4.3	30.5	19.5	18.2	24.0	35.2	25.7
90+	67.3	13.3	87.1	3.8	38.4	26.6	30.2	34.9	36.1	29.2

Ht: Hospitalized for tuberculosis treatment

Ho: Hospitalized mainly due to other diseases

【Outcome】

Patients deleted from tuberculosis registration by the end of years (in 2021 and in 2022)
 - Patients with tuberculosis patients and LTBI notified in the previous years (in 2020 and in 2021, respectively) -

	Newly notified patients with tuberculosis												Patients with LTBI (Not included in the total) (%)
	Total (%)	Patients with pulmonary tuberculosis						Patients with extra-pulmonary tuberculosis (%)					
		Sub-total (pulmonary tuberculosis) (%)	Sputum-smear positive		Other bacteriologically positive (%)	Bacteriologically negative and others (%)							
			New (%)	Re-treatment (%)									
Newly notified tuberculosis cases in 2020*	12,641 (100)	9,413 (100)	4,406 (100)	206 (100)	3,573 (100)	1,228 (100)	3,228 (100)	5,524 (100)					
Total number of patients deleted from tuberculosis registration by the end of 2021	4,400 (34.8)	3,285 (34.9)	1,773 (40.2)	62 (30.1)	1,159 (32.4)	291 (23.7)	1,115 (34.5)	3,472 (62.9)					
No need for post-treatment follow-up	59 (0.5)	24 (0.3)	3 (0.1)	1 (0.5)	6 (0.2)	14 (1.1)	35 (1.1)	2,976 (53.9)					
Died	3,433 (27.2)	2,572 (27.3)	1,480 (33.6)	51 (24.8)	893 (25.0)	148 (12.1)	861 (26.7)	217 (3.9)					
Tuberculosis-related death	1,129 (8.9)	879 (9.3)	656 (14.9)	25 (12.1)	182 (5.1)	16 (1.3)	250 (7.7)	4 (0.1)					
Other causes of death	2,304 (18.2)	1,693 (18.0)	824 (18.7)	26 (12.6)	711 (19.9)	132 (10.7)	611 (18.9)	213 (3.9)					
Transfer out	822 (6.5)	629 (6.7)	264 (6.0)	6 (2.9)	244 (6.8)	115 (9.4)	193 (6.0)	194 (3.5)					
Register during follow-up	62 (0.5)	46 (0.5)	21 (0.5)	3 (1.5)	13 (0.4)	9 (0.7)	16 (0.5)	38 (0.7)					
Other reasons	24 (0.2)	14 (0.1)	5 (0.1)	1 (0.5)	3 (0.1)	5 (0.4)	10 (0.3)	47 (0.9)					
Newly notified tuberculosis cases in 2021**	11,495 (100)	8,428 (100)	4,001 (100)	168 (100)	3,237 (100)	1,022 (100)	3,067 (100)	5,124 (100)					
Total number of patients deleted from tuberculosis registration by the end of 2021	4,167 (36.3)	3,091 (36.7)	1,694 (42.3)	62 (36.9)	1,096 (33.9)	239 (23.4)	1,076 (35.1)	3,409 (66.5)					
No need for post-treatment follow-up	50 (0.4)	17 (0.2)	7 (0.2)	0 (0.0)	4 (0.1)	6 (0.6)	33 (1.1)	2,938 (57.3)					
Died	3,251 (28.3)	2,423 (28.7)	1,400 (35.0)	53 (31.5)	849 (26.2)	121 (11.8)	828 (27.0)	226 (4.4)					
Tuberculosis-related death	1,090 (9.5)	852 (10.1)	612 (15.3)	22 (13.1)	198 (6.1)	20 (2.0)	238 (7.8)	1 (0.0)					
Other causes of death	2,161 (18.8)	1,571 (18.6)	788 (19.7)	31 (18.5)	651 (20.1)	101 (9.9)	590 (19.2)	225 (4.4)					
Transfer out	799 (7.0)	609 (7.2)	267 (6.7)	7 (4.2)	229 (7.1)	106 (10.4)	190 (6.2)	170 (3.3)					
Register during follow-up	41 (0.4)	29 (0.3)	15 (0.4)	1 (0.6)	11 (0.3)	2 (0.2)	12 (0.4)	32 (0.6)					
Other reasons	26 (0.2)	13 (0.2)	5 (0.1)	1 (0.6)	3 (0.1)	4 (0.4)	13 (0.4)	43 (0.8)					

* Based on the annual report database in 2021. ** Based on the annual report database in 2022.

LTBI : Latent Tuberculosis Infection

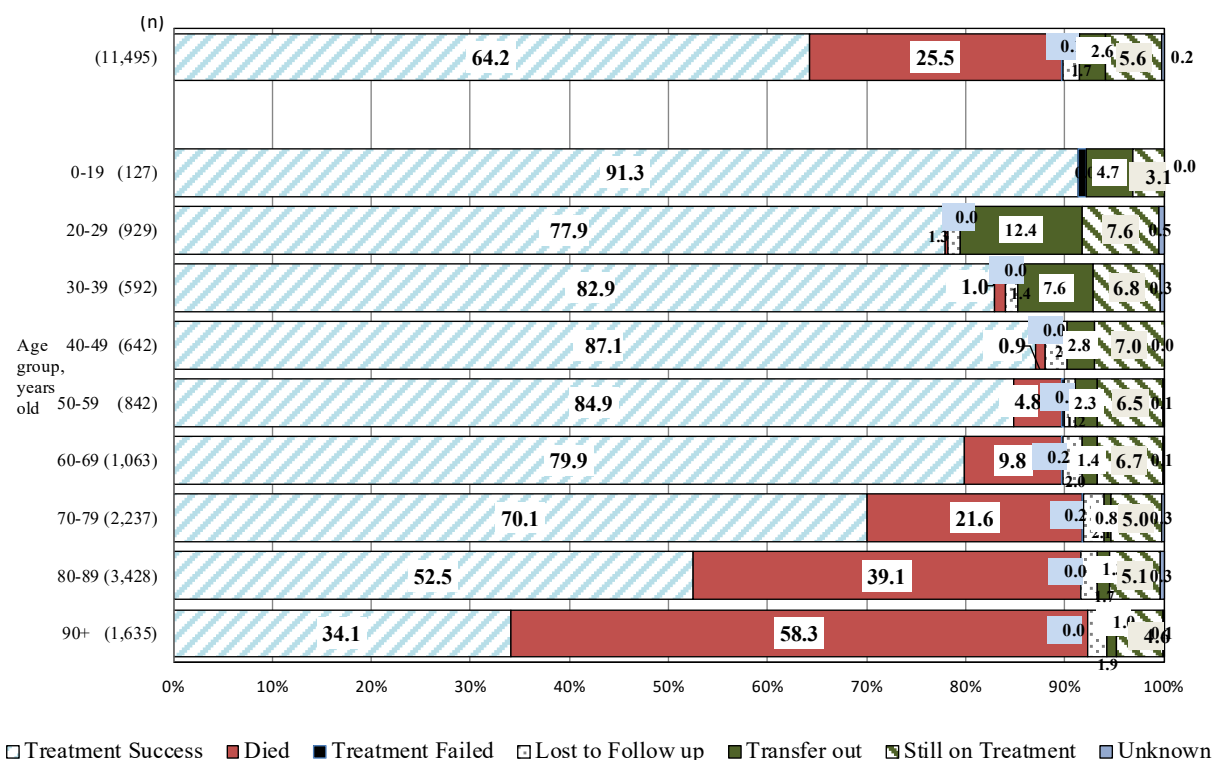


Fig. 3 Treatment outcomes of newly notified tuberculosis patients by age group, 2021 year cohort (%)

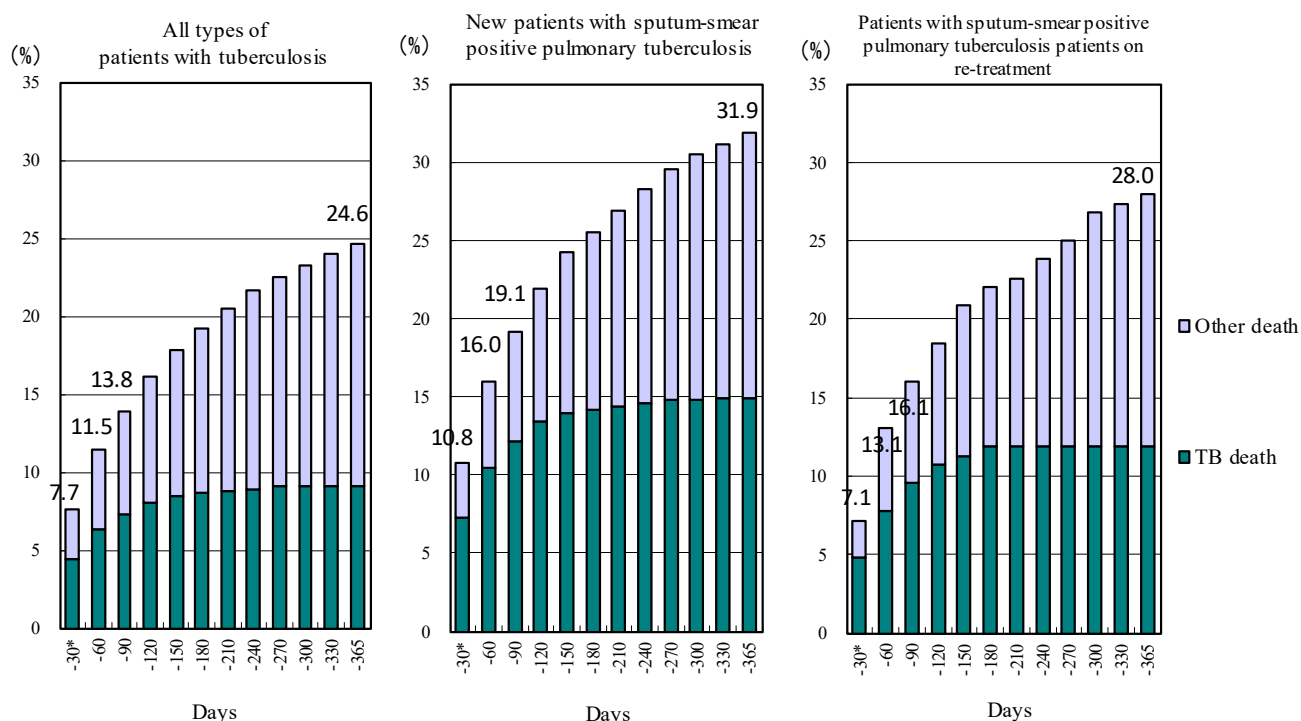


Fig. 4 Cumulative proportion of deaths by duration of treatment - Newly notified patients with tuberculosis in 2021

* Includes patients who died before the commencement of treatment.

TB: tuberculosis