

【治療 1】

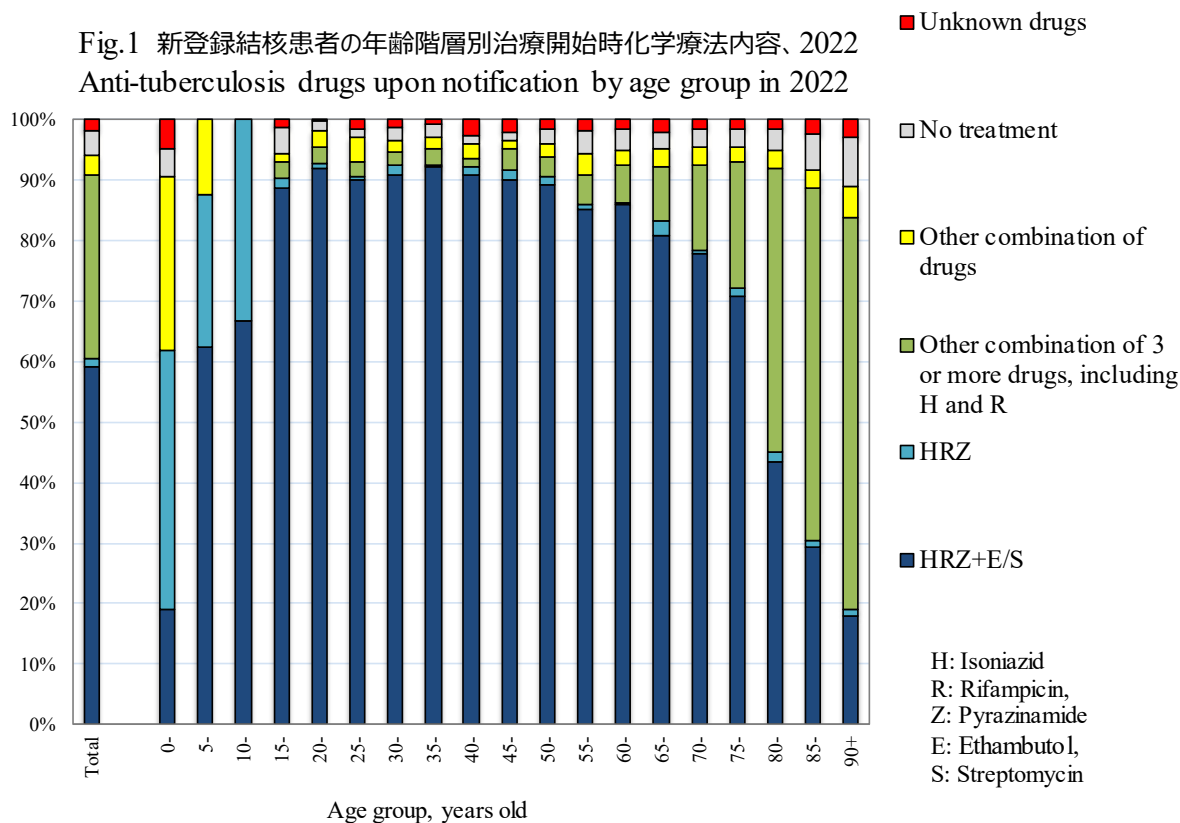
Table 1 再治療患者の年齢階層別・前回治療開始年別患者数、2022

Number of patients with TB on re-treatment, by year when previous TB treatment was initiated and age group, 2022

Year when previous TB treatment initiated	Total	Age group (years)								Previous TB treatment regimen unknown (re-count)
		0-19	20-29	30-39	40-49	50-59	60-69	70-79	80+	
Total	384	2	23	16	29	36	55	82	141	114
~1949	12	0	0	0	0	0	0	0	12	9
1950-59	31	0	0	0	0	0	0	5	26	22
1960-69	13	0	0	0	0	1	1	4	7	9
1970-79	18	0	0	0	0	0	1	11	6	13
1980-89	8	0	0	0	0	3	4	0	1	6
1990-99	18	0	0	2	2	2	3	2	7	9
2000-09	37	0	0	2	6	3	4	12	10	11
2010-19	122	1	12	5	14	13	21	20	36	21
2020-22	125	1	11	7	7	14	21	28	36	14
2010-2021 (re-count)										
2010	5	0	0	0	1	1	1	0	2	0
2011	4	0	1	0	0	0	1	0	2	0
2012	16	1	0	3	2	2	1	3	4	3
2013	9	0	0	0	2	1	2	1	3	3
2014	5	0	0	0	0	1	1	2	1	0
2015	11	0	0	0	0	1	5	0	5	2
2016	12	0	2	0	0	0	2	5	3	2
2017	17	0	0	1	1	3	2	2	8	4
2018	13	0	3	0	4	1	1	0	4	4
2019	30	0	6	1	4	3	5	7	4	3
2020	38	1	2	2	1	4	6	6	16	7
2021	58	0	4	2	4	7	12	15	14	5
2022	29	0	5	3	2	3	3	7	6	2

TB: tuberculosis

Fig.1 新登録結核患者の年齢階層別治療開始時化学療法内容、2022
Anti-tuberculosis drugs upon notification by age group in 2022



旧表 再治療者の年齢階層別前回治療内容別患者数、2022年

Previous table Number of retreatment tuberculosis patients by previous tuberculosis treatment regimen and age group, 2022

年齢 Age group	再治療者 Retreatment	前回治療内容 Previous treatment regimen				
		HRZ含む治療 Regimen with HRZ	他HR含む治療 Other regimen with HR	その他治療 Other regimen	潜在性結核治療 LTBI treatment	不明 Unknown
総数 Total	384	118	65	27	60	114
0-4	0	0	0	0	0	0
5-9	0	0	0	0	0	0
10-14	0	0	0	0	0	0
15-19	2	0	0	0	1	1
20-24	12	8	1	0	2	1
25-29	11	3	1	0	4	3
30-34	8	3	1	0	0	4
35-39	8	1	0	0	4	3
40-44	16	8	2	0	5	1
45-49	13	6	0	0	2	5
50-54	16	5	5	0	4	2
55-59	20	8	3	0	5	4
60-64	24	9	4	1	4	6
65-69	31	12	3	1	5	10
70-74	35	14	5	1	6	9
75-79	47	15	7	5	5	15
80-84	47	14	7	5	4	17
85-89	51	9	13	8	4	17
90+	43	3	13	6	5	16

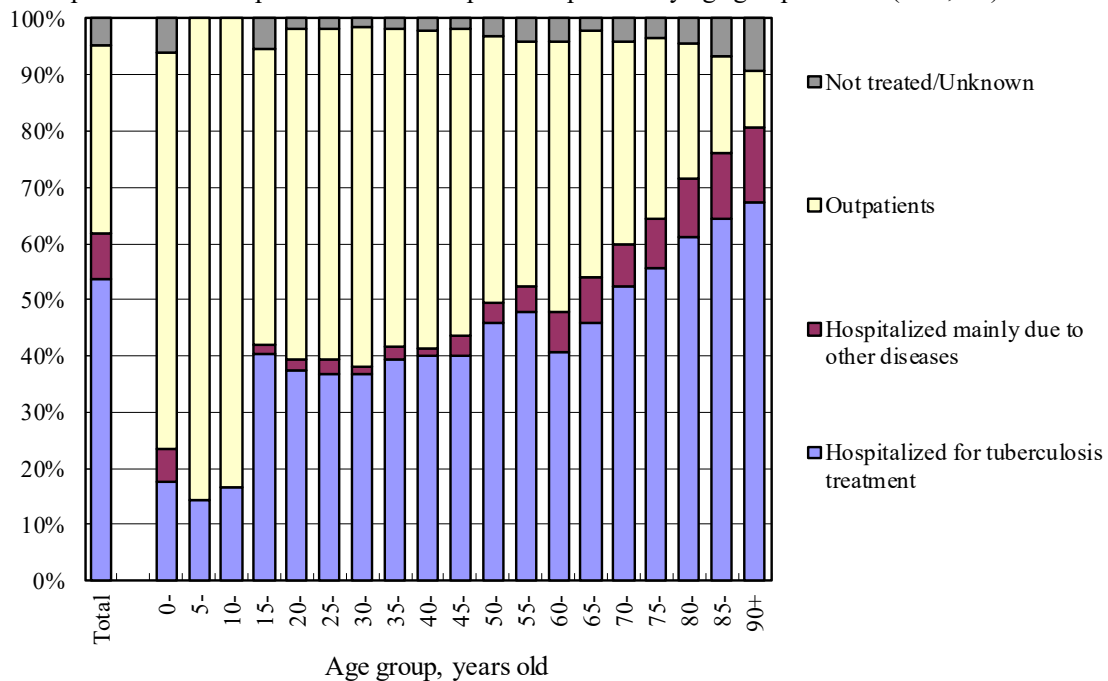
H : Isoniazid, R : Rifampicin, Z : Pyrazinamide

LTBI : Latent Tuberculosis Infection

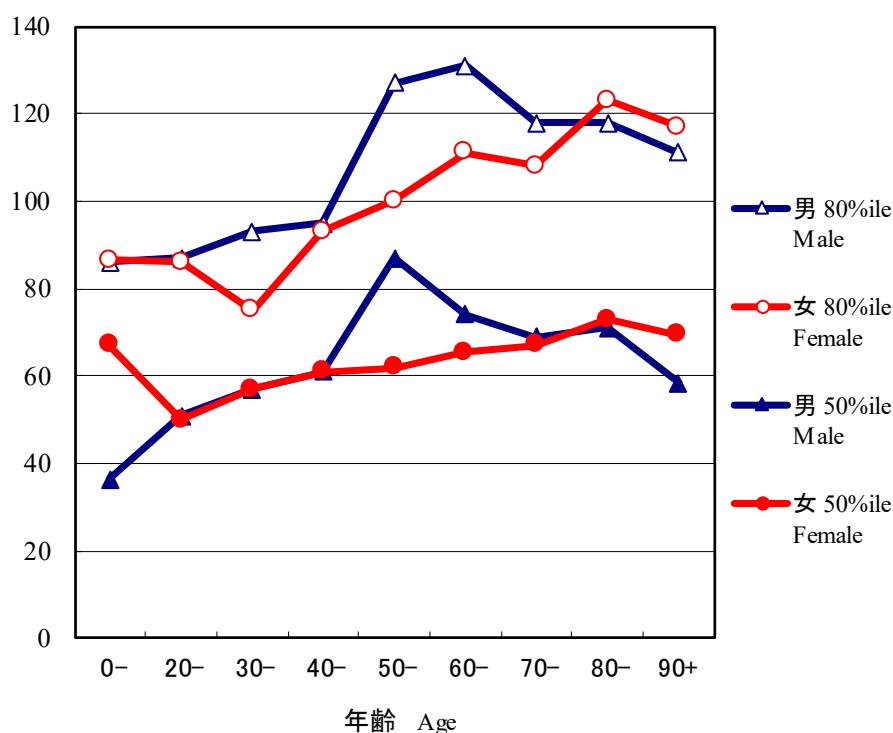
【治療2】

Fig.2 新登録肺結核患者の治療開始時受療状況別割合、年齢階層別、2022

Proportion of the outpatients and the hospitalized patients by age group in 2022 (N=7,454)



日数 Days



旧図 治療開始時結核を主たる理由に入院かつ退院時期情報があった者について、性・年齢階層別入院期間（中央値および80パーセントイル値）、2021年新登録肺結核喀痰塗抹陽性初回治療者

Previous Fig. Median (50 percentile) and 80 percentile of duration of hospitalization among those hospitalized with tuberculosis and with known discharged day, new sputum-smear positive pulmonary tuberculosis patients in 2021 by sex and age group

旧表 年齢階層別治療開始時入院あるいは他疾患入院の割合(%)、総合患者分類別、2022年新登録結核患者
Previous table Proportion (%) hospitalized among newly notified tuberculosis patients in 2022 by age group and patient classification

		肺結核 Pulmonary TB								肺外結核 Extra-pulmonary	
年齢 Age	計 Total	喀痰塗抹陽性 Sputum smear positive		その他の結核 菌陽性 Other bacillary positive		菌陰性・その他 Bacillary negative /unknown					
		入院 Ht	他入院 Ho	入院 Ht	他入院 Ho	入院 Ht	他入院 Ho	入院 Ht	他入院 Ho		
総数 Total	53.7	8.2	88.1	3.5	23.1	13.5	9.0	11.1	27.0	21.1	
0-19	32.2	2.3	89.5	0.0	29.4	0.0	2.9	5.9	15.8	5.3	
20-29	37.1	2.3	92.4	0.0	14.4	2.2	5.3	5.3	12.7	8.9	
30-39	38.0	1.8	89.7	1.5	12.4	2.2	5.5	1.8	8.3	5.0	
40-49	40.0	2.6	89.3	0.6	9.6	3.2	1.1	5.4	14.1	8.6	
50-59	47.0	3.9	87.5	1.9	14.5	5.6	3.5	5.8	11.2	16.0	
60-69	43.7	7.7	83.3	3.5	13.2	12.3	4.7	7.0	17.6	22.2	
70-79	54.2	8.3	87.6	4.4	21.9	12.0	11.2	13.6	25.9	18.5	
80-89	62.9	11.2	89.3	4.3	30.5	19.5	18.2	24.0	35.2	25.7	
90+	67.3	13.3	87.1	3.8	38.4	26.6	30.2	34.9	36.1	29.2	

入院: 結核を主たる理由に入院 Ht: Hospitalized for tuberculosis treatment

他入院: 結核以外の他疾患の治療を主たる理由に入院 Ho: Hospitalized mainly due to other diseases

【治療成績】

Table 2 2020,2021年における新登録結核患者と潜在性結核感染症登録患者の次年末時登録除外状況および除外理由、総合患者分類別
 Patients deleted from tuberculosis registration by the end of years (in 2021 and in 2022)
 - Patients with tuberculosis patients and LTBI notified in the previous years (in 2020 and in 2021, respectively) -

	Newly notified patients with tuberculosis												Patients with LTBI (Not included in the total) (%)
	Total (%)	Patients with pulmonary tuberculosis								Patients with extra-pulmonary tuberculosis (%)			
		Sub-total (pulmonary tuberculosis) (%)	Sputum-smear positive		Other bacteriologically positive (%)	Bacteriologically negative and others (%)	Re-treatment (%)						
		New (%)											
Newly notified tuberculosis cases in 2020*	12,641 (100)	9,413 (100)	4,406 (100)	206 (100)	3,573 (100)	1,228 (100)	3,228 (100)	5,524 (100)					
Total number of patients deleted from tuberculosis registration by the end of 2021	4,400 (34.8)	3,285 (34.9)	1,773 (40.2)	62 (30.1)	1,159 (32.4)	291 (23.7)	1,115 (34.5)	3,472 (62.9)					
No need for post-treatment follow-up	59 (0.5)	24 (0.3)	3 (0.1)	1 (0.5)	6 (0.2)	14 (1.1)	35 (1.1)	2,976 (53.9)					
Died	3,433 (27.2)	2,572 (27.3)	1,480 (33.6)	51 (24.8)	893 (25.0)	148 (12.1)	861 (26.7)	217 (3.9)					
Tuberculosis-related death	1,129 (8.9)	879 (9.3)	656 (14.9)	25 (12.1)	182 (5.1)	16 (1.3)	250 (7.7)	4 (0.1)					
Other causes of death	2,304 (18.2)	1,693 (18.0)	824 (18.7)	26 (12.6)	711 (19.9)	132 (10.7)	611 (18.9)	213 (3.9)					
Transfer out	822 (6.5)	629 (6.7)	264 (6.0)	6 (2.9)	244 (6.8)	115 (9.4)	193 (6.0)	194 (3.5)					
Register during follow-up	62 (0.5)	46 (0.5)	21 (0.5)	3 (1.5)	13 (0.4)	9 (0.7)	16 (0.5)	38 (0.7)					
Other reasons	24 (0.2)	14 (0.1)	5 (0.1)	1 (0.5)	3 (0.1)	5 (0.4)	10 (0.3)	47 (0.9)					
Newly notified tuberculosis cases in 2021**	11,495 (100)	8,428 (100)	4,001 (100)	168 (100)	3,237 (100)	1,022 (100)	3,067 (100)	5,124 (100)					
Total number of patients deleted from tuberculosis registration by the end of 2021	4,167 (36.3)	3,091 (36.7)	1,694 (42.3)	62 (36.9)	1,096 (33.9)	239 (23.4)	1,076 (35.1)	3,409 (66.5)					
No need for post-treatment follow-up	50 (0.4)	17 (0.2)	7 (0.2)	0 (0.0)	4 (0.1)	6 (0.6)	33 (1.1)	2,938 (57.3)					
Died	3,251 (28.3)	2,423 (28.7)	1,400 (35.0)	53 (31.5)	849 (26.2)	121 (11.8)	828 (27.0)	226 (4.4)					
Tuberculosis-related death	1,090 (9.5)	852 (10.1)	612 (15.3)	22 (13.1)	198 (6.1)	20 (2.0)	238 (7.8)	1 (0.0)					
Other causes of death	2,161 (18.8)	1,571 (18.6)	788 (19.7)	31 (18.5)	651 (20.1)	101 (9.9)	590 (19.2)	225 (4.4)					
Transfer out	799 (7.0)	609 (7.2)	267 (6.7)	7 (4.2)	229 (7.1)	106 (10.4)	190 (6.2)	170 (3.3)					
Register during follow-up	41 (0.4)	29 (0.3)	15 (0.4)	1 (0.6)	11 (0.3)	2 (0.2)	12 (0.4)	32 (0.6)					
Other reasons	26 (0.2)	13 (0.2)	5 (0.1)	1 (0.6)	3 (0.1)	4 (0.4)	13 (0.4)	43 (0.8)					

* Based on the annual report database in 2021. ** Based on the annual report database in 2022.

LTBI : Latent Tuberculosis Infection

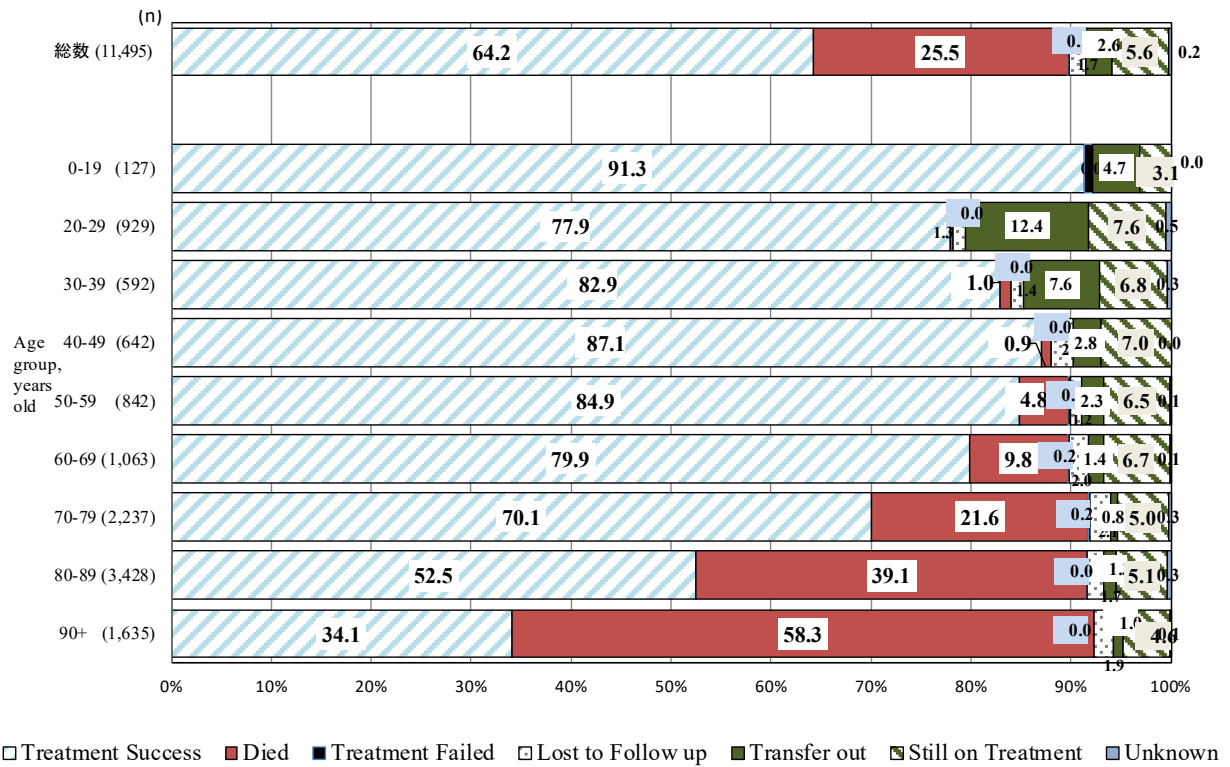


図3 2021年新登録患者の2022年末治療成績 (%)

Fig. 3 Treatment outcomes of newly notified tuberculosis patients by age group, 2021 year cohort (%)

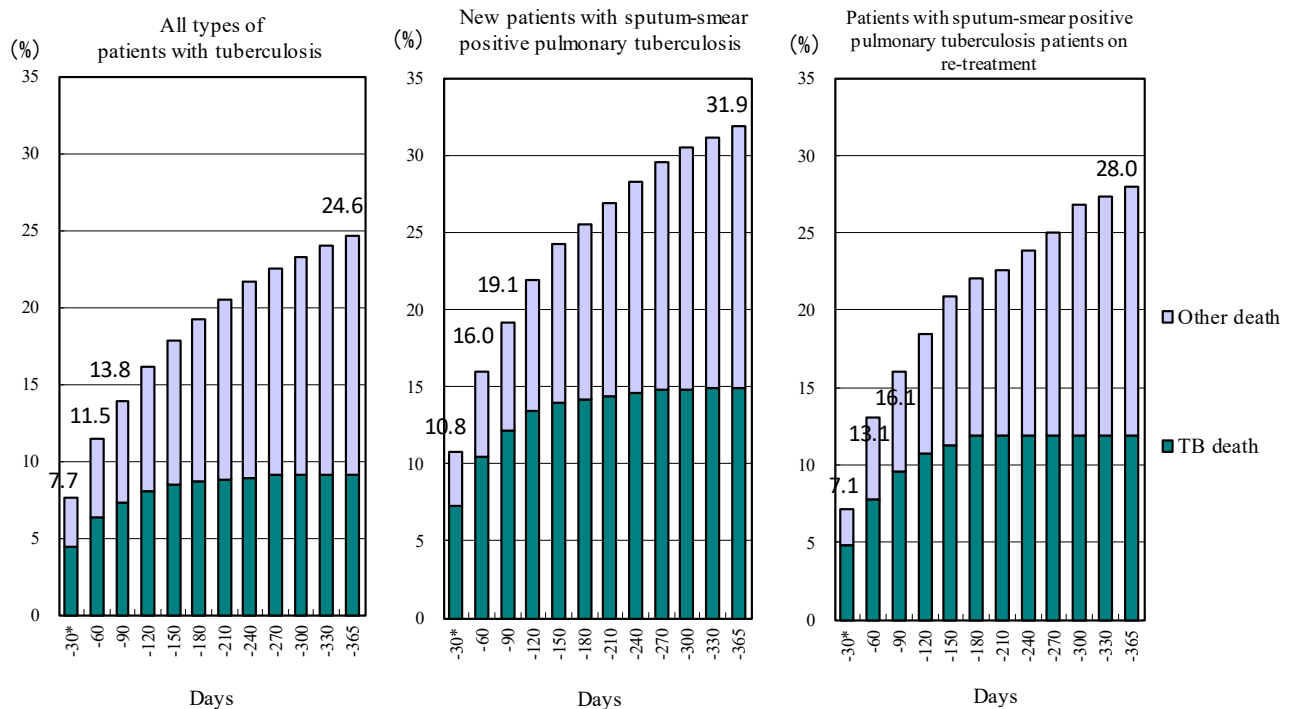


Fig. 4 2021年新登録結核患者中治療開始後1年以内死亡者の時期別・死因別累積死亡割合 (%)

Cumulative proportion of deaths by duration of treatment - Newly notified patients with tuberculosis in 2021

* Includes patients who died before the commencement of treatment.

TB: tuberculosis