



Monthly Report of Tuberculosis Surveillance, Japan - February, 2024

The reporting and recording of tuberculosis (TB) and Latent TB Infection (LTBI) are managed at public health centers (PHCs) by the nationwide computerized TB surveillance system in Japan. A monthly report is compiled from the database automatically and regularly on 4th Friday of the next month, and an annual report is also produced much like the monthly report, but with sufficient time for data correction.

Tables and figures shown in the monthly reports are as follows.

Figures

Figure 1. Number of newly notified TB cases by month, Japan, 2021-2024

Figure 2. Newly notified TB cases by sex and age, Japan, summation (Jan. -Feb.) 2024

Figure 3. Notification rate of TB cases by sex and age, Japan, summation (Jan. -Feb.) 2024

Figure 4. Notification rate of TB by prefecture, Japan, summation (Jan. -Feb.) 2024

Figure 5. Notification rate of TB by major city, Japan, summation (Jan. -Feb.) 2024

Figure 6. Number of LTBI, Japan, 2021-2024

Figure 7. Number of LTBI by sex and age group, Japan, summation (Jan. -Feb.) 2024

Tables

Table 1. Newly notified TB cases and rates by sex and age, Japan, 2024

Table 2. Newly notified sputum smear positive pulmonary TB cases and rates by sex and age, Japan, 2024

Table 3. Newly notified TB cases and rates by prefecture, Japan, 2024

Table 4. Newly notified TB cases and rates by major city, Japan, 2024

Table 5. LTBI cases and rates by sex and age, Japan, 2024

Table 6. LTBI cases and rates by prefecture, Japan, 2024

Table 7. LTBI cases and rates by major city, Japan, 2024

Figure 1. Number of newly notified TB cases by month, Japan, 2021-2024

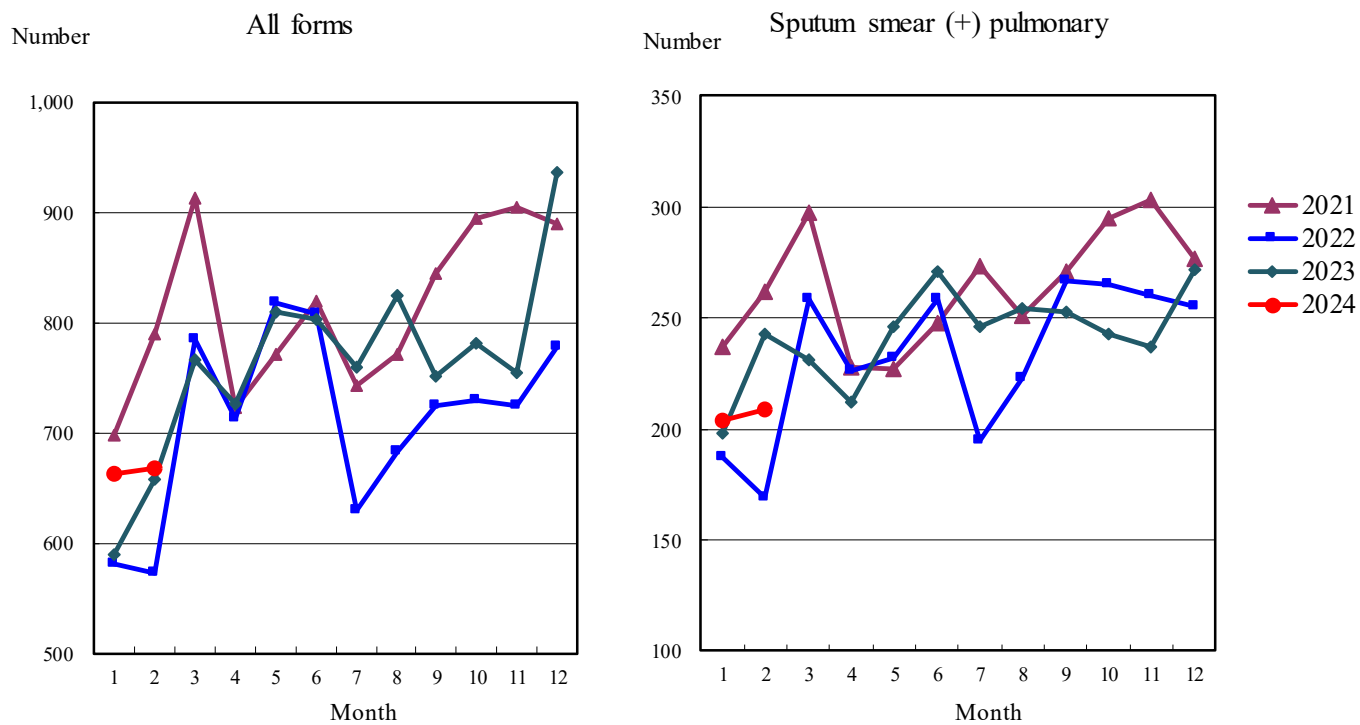


Figure 2. Newly notified TB patients by sex and age, Japan, summation (Jan.-Feb.) 2024

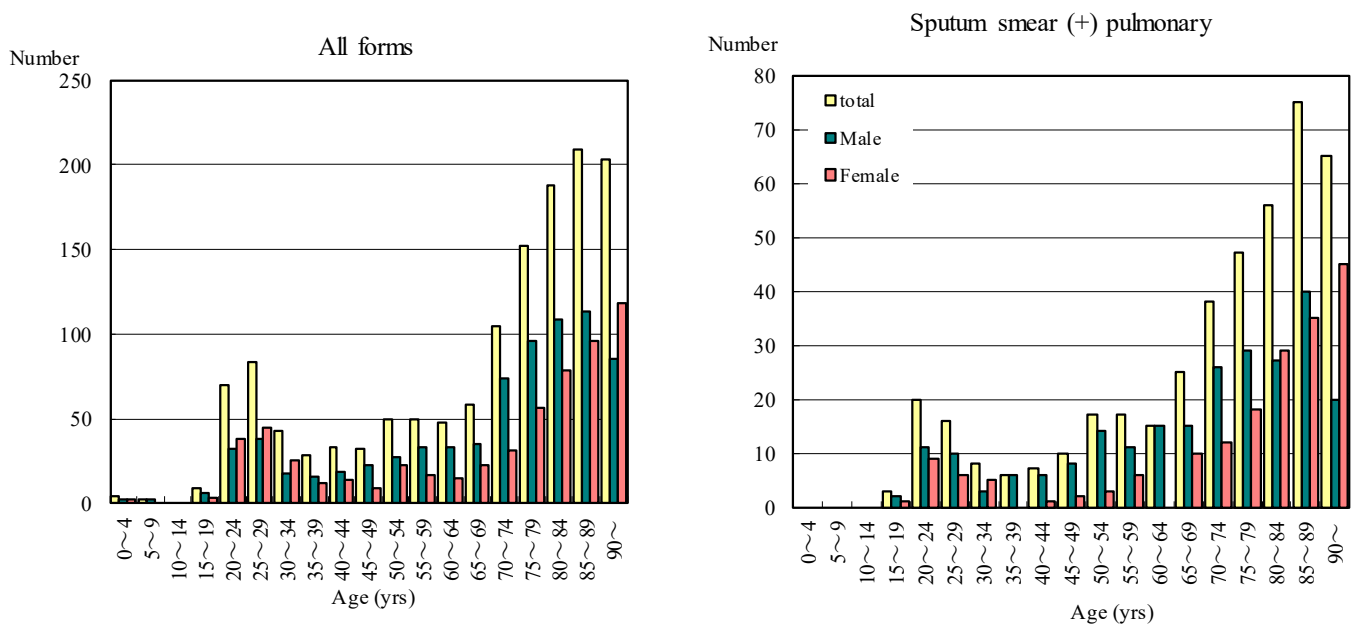


Figure 3. Notification rate of TB cases by sex and age, Japan, summation (Jan.-Feb.) 2024

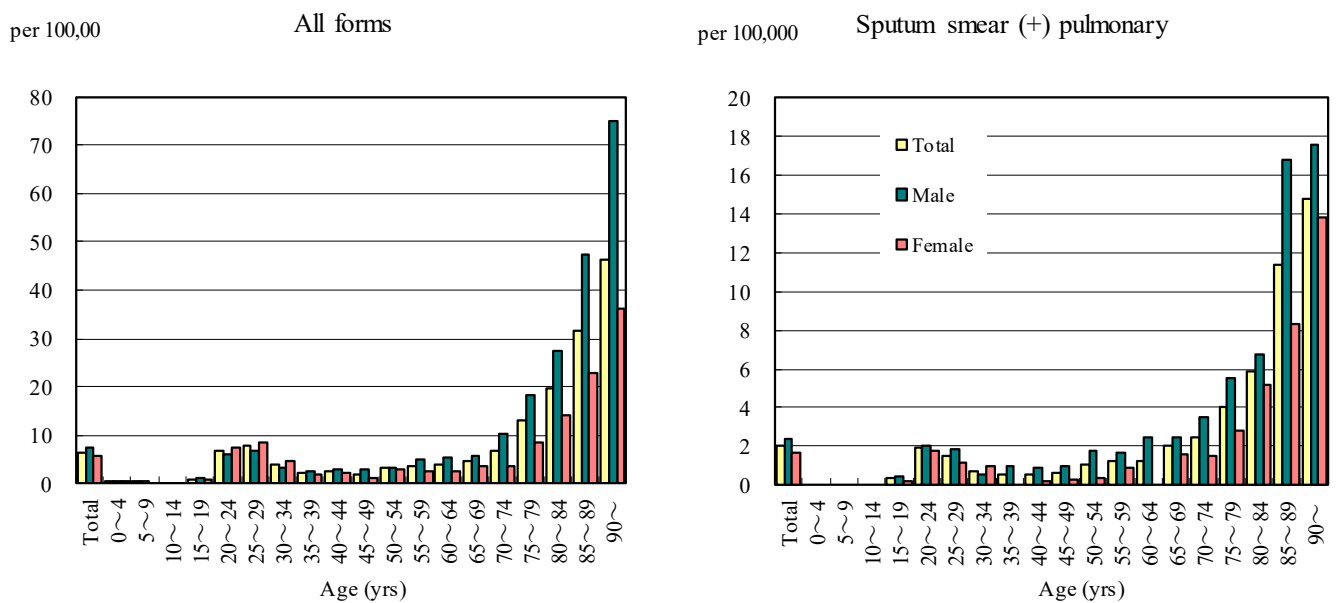


Figure 4. Notification rates of TB by prefecture, Japan, summation (Jan.-Feb.) 2024

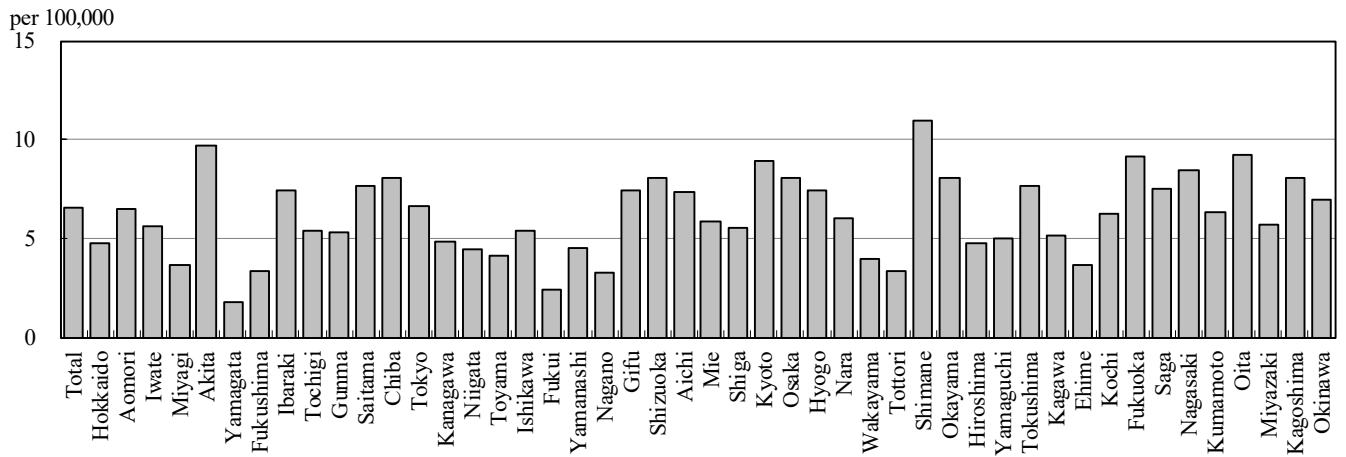


Figure 5. Notification rates of TB major city, Japan, summation (Jan.-Feb.) 2024

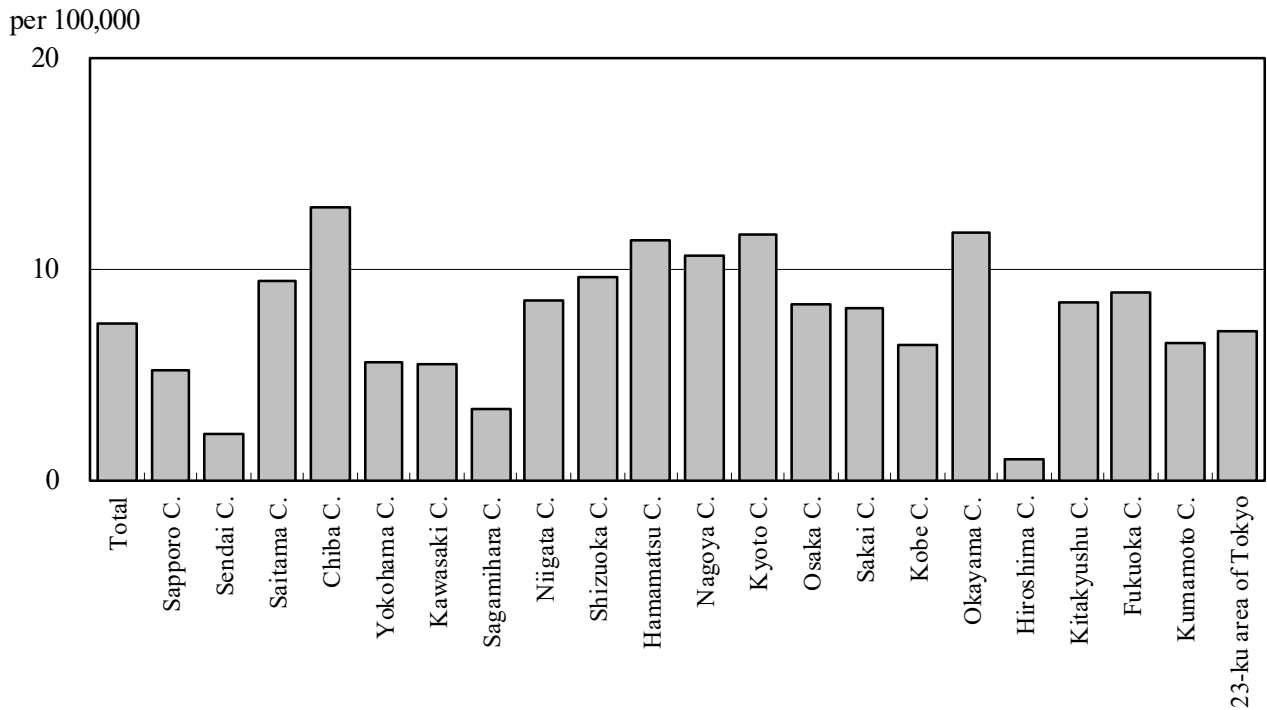


Figure 6. Number of LTBI, Japan, 2021-2024

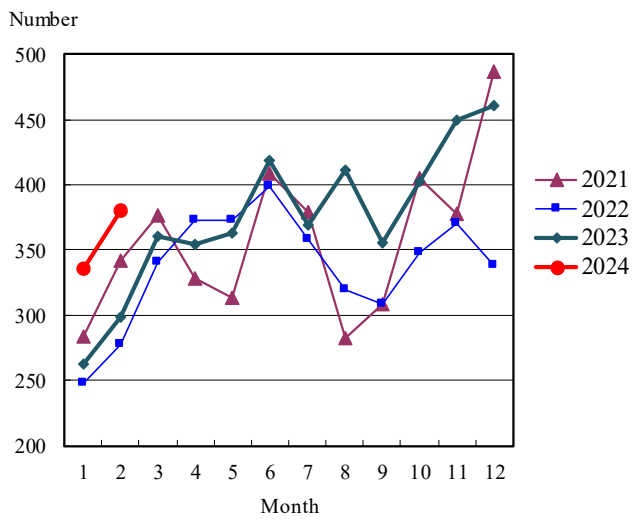


Figure 7. Number of LTBI by sex and age group, Japan, summation (Jan.-Feb.) 2024

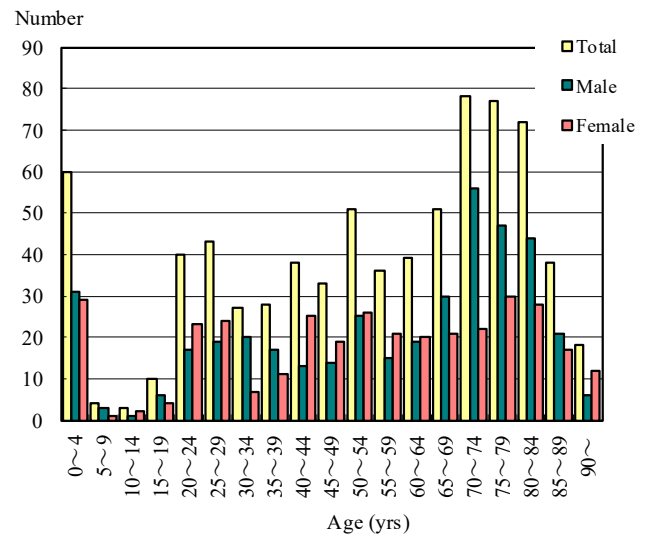


Table 1. Newly notified TB cases and rates by sex and age, Japan, 2024

	Feb.			Summation (Jan.-Feb.)			Notification rate (per 100,000)		
	Total	Male	Female	Total	Male	Female	Total	Male	Female
Total	667	367	300	1,367	761	606	6.6	7.5	5.7
0~4	2	1	1	4	2	2	0.6	0.6	0.6
5~9	0	0	0	2	2	0	0.2	0.5	0.0
10~14	0	0	0	0	0	0	0.0	0.0	0.0
15~19	3	1	2	9	6	3	1.0	1.3	0.7
20~24	42	17	25	70	32	38	6.7	6.0	7.5
25~29	41	19	22	83	38	45	7.8	6.9	8.7
30~34	26	13	13	43	18	25	4.0	3.3	4.8
35~39	10	5	5	28	16	12	2.3	2.6	2.0
40~44	15	12	3	33	19	14	2.5	2.8	2.1
45~49	19	14	5	32	23	9	2.0	2.9	1.2
50~54	29	17	12	50	27	23	3.2	3.4	2.9
55~59	28	16	12	50	33	17	3.7	4.9	2.5
60~64	24	18	6	48	33	15	3.9	5.4	2.4
65~69	28	16	12	58	35	23	4.6	5.7	3.6
70~74	45	30	15	105	74	31	6.7	10.1	3.8
75~79	72	46	26	152	96	56	13.0	18.3	8.7
80~84	92	49	43	188	109	79	19.6	27.3	14.1
85~89	90	51	39	209	113	96	31.7	47.4	22.8
90~	101	42	59	203	85	118	46.2	74.8	36.2

Temporary registrants = 23, Total of registrants and temporary registrants = 690

Rate: summation / (population*2/12)*100,000

population*2st Oct. 2022

Table 2. Newly notified sputum smear positive pulmonary TB cases and rates by sex and age, Japan, 2024

	Feb.			Summation (Jan.-Feb.)			Notification rate (per 100,000)		
	Total	Male	Female	Total	Male	Female	Total	Male	Female
Total	209	123	86	425	243	182	2.0	2.4	1.7
0~4	0	0	0	0	0	0	0.0	0.0	0.0
5~9	0	0	0	0	0	0	0.0	0.0	0.0
10~14	0	0	0	0	0	0	0.0	0.0	0.0
15~19	2	1	1	3	2	1	0.3	0.4	0.2
20~24	11	7	4	20	11	9	1.9	2.1	1.8
25~29	8	4	4	16	10	6	1.5	1.8	1.2
30~34	5	3	2	8	3	5	0.7	0.5	1.0
35~39	1	1	0	6	6	0	0.5	1.0	0.0
40~44	4	4	0	7	6	1	0.5	0.9	0.2
45~49	7	5	2	10	8	2	0.6	1.0	0.3
50~54	13	11	2	17	14	3	1.1	1.8	0.4
55~59	6	2	4	17	11	6	1.3	1.6	0.9
60~64	8	8	0	15	15	0	1.2	2.4	0.0
65~69	13	9	4	25	15	10	2.0	2.5	1.6
70~74	18	12	6	38	26	12	2.4	3.5	1.5
75~79	24	15	9	47	29	18	4.0	5.5	2.8
80~84	31	14	17	56	27	29	5.9	6.8	5.2
85~89	28	17	11	75	40	35	11.4	16.8	8.3
90~	30	10	20	65	20	45	14.8	17.6	13.8

Rate: summation / (population*2/12)*100,000

population*2st Oct. 2022

Table 3. Newly notified TB cases and rates by prefecture, Japan, 2024

	Feb.		Summation (Jan.-Feb.)		Notification rate (per 100,000)	
	Newly notified TB	Sputum smear (+)	Newly notified TB	Sputum smear (+)	Newly notified TB	Sputum smear (+)
	Total	667	209	1,367	425	6.6
Hokkaido	24	6	41	9	4.8	1.1
Aomori	4	0	13	6	6.5	3.0
Iwate	4	0	11	1	5.6	0.5
Miyagi	3	0	14	2	3.7	0.5
Akita	8	1	15	5	9.7	3.2
Yamagata	0	0	3	0	1.7	0.0
Fukushima	5	2	10	5	3.4	1.7
Ibaraki	21	6	35	9	7.4	1.9
Tochigi	14	4	17	5	5.3	1.6
Gunma	7	2	17	5	5.3	1.6
Saitama	46	20	94	41	7.7	3.4
Chiba	39	14	84	26	8.0	2.5
Tokyo	81	30	156	55	6.7	2.4
Kanagawa	30	10	74	22	4.8	1.4
Niigata	9	2	16	5	4.5	1.4
Toyama	5	2	7	2	4.1	1.2
Ishikawa	6	2	10	2	5.4	1.1
Fukui	0	0	3	0	2.4	0.0
Yamanashi	5	3	6	3	4.5	2.2
Nagano	7	2	11	2	3.3	0.6
Gifu	15	4	24	5	7.4	1.5
Shizuoka	22	7	48	14	8.0	2.3
Aichi	46	12	92	24	7.4	1.9
Mie	6	1	17	2	5.9	0.7
Shiga	5	0	13	4	5.5	1.7
Kyoto	24	5	38	11	8.9	2.6
Osaka	41	19	118	49	8.1	3.3
Hyogo	35	12	67	19	7.4	2.1
Nara	6	0	13	1	6.0	0.5
Wakayama	3	0	6	0	4.0	0.0
Tottori	1	0	3	0	3.3	0.0
Shimane	5	0	12	3	10.9	2.7
Okayama	12	3	25	5	8.1	1.6
Hiroshima	12	2	22	3	4.8	0.7
Yamaguchi	7	3	11	4	5.0	1.8
Tokushima	4	2	9	3	7.7	2.6
Kagawa	6	1	8	1	5.1	0.6
Ehime	6	3	8	4	3.7	1.8
Kochi	3	0	7	1	6.2	0.9
Fukuoka	38	12	78	30	9.1	3.5
Saga	3	1	10	4	7.5	3.0
Nagasaki	8	1	18	3	8.4	1.4
Kumamoto	11	2	18	7	6.3	2.4
Oita	5	1	17	5	9.2	2.7
Miyazaki	6	3	10	4	5.7	2.3
Kagoshima	10	4	21	6	8.1	2.3
Okinawa	9	5	17	8	6.9	3.3

Rate: summation / (population*2/12)*100,000
population*2st Oct. 2022

Table 4. Newly notified TB cases and rates by major city, Japan, 2024

	Feb.		Summation (Jan.-Feb.)		Notification Rate (per 100,000)	
	Newly notified TB	Sputum Smear(+)	Newly notified TB	Sputum Smear(+)	Newly notified TB	Sputum Smear(+)
Total	229	76	461	148	7.4	2.4
Sapporo City	13	6	17	6	5.2	1.8
Sendai City	0	0	4	0	2.2	0.0
Saitama City	11	3	21	6	9.4	2.7
Chiba City	14	6	21	8	12.9	4.9
Yokohama City	15	4	35	10	5.6	1.6
Kawasaki City	4	1	14	3	5.5	1.2
Sagamihara City	2	2	4	3	3.3	2.5
Niigata City	7	2	11	4	8.5	3.1
Shizuoka City	5	1	11	4	9.6	3.5
Hamamatsu City	7	2	15	3	11.3	2.3
Nagoya City	25	9	41	13	10.6	3.4
Kyoto City	16	2	28	6	11.6	2.5
Osaka City	6	3	38	13	8.3	2.8
Sakai City	8	4	11	6	8.1	4.4
Kobe City	9	2	16	4	6.4	1.6
Okayama City	8	3	14	3	11.7	2.5
Hiroshima City	0	0	2	0	1.0	0.0
Kitakyushu City	7	1	13	3	8.4	1.9
Fukuoka City	11	8	24	16	8.8	5.9
Kumamoto City	3	0	8	4	6.5	3.3
23-ku area of Tokyo	58	17	113	33	7.0	2.0

Rate: summation / (population*2/12)*100,000 population*2st Oct. 2022

Major city: city with a population of one million or more.

Table 4 is a re-count of Table 3.

Table 5. LTBI cases and rates by sex and age, Japan, 2024

	Feb.			Summation (Jan.-Feb.)			(Ratio) LTBI/Newly notified cases		
	Total	Male	Female	Total	Male	Female	Total	Male	Female
Total	380	195	185	746	404	342	0.5	0.5	0.6
0~4	35	18	17	60	31	29	15.0	15.5	14.5
5~9	0	0	0	4	3	1	2.0	1.5	-
10~14	2	1	1	3	1	2	-	-	-
15~19	5	2	3	10	6	4	1.1	1.0	1.3
20~24	20	7	13	40	17	23	0.6	0.5	0.6
25~29	25	12	13	43	19	24	0.5	0.5	0.5
30~34	13	10	3	27	20	7	0.6	1.1	0.3
35~39	11	7	4	28	17	11	1.0	1.1	0.9
40~44	17	5	12	38	13	25	1.2	0.7	1.8
45~49	19	9	10	33	14	19	1.0	0.6	2.1
50~54	25	13	12	51	25	26	1.0	0.9	1.1
55~59	14	9	5	36	15	21	0.7	0.5	1.2
60~64	18	7	11	39	19	20	0.8	0.6	1.3
65~69	26	14	12	51	30	21	0.9	0.9	0.9
70~74	43	27	16	78	56	22	0.7	0.8	0.7
75~79	42	22	20	77	47	30	0.5	0.5	0.5
80~84	33	19	14	72	44	28	0.4	0.4	0.4
85~89	20	8	12	38	21	17	0.2	0.2	0.2
90~	12	5	7	18	6	12	0.1	0.1	0.1

LTBI: latent TB Infection

Number of LTBI is not included in the newly notified TB patients

Table 6. LTBI cases and rates by prefecture, Japan, 2024

	Feb.	Summation (Jan.-Feb.)	
	LTBI	LTBI	(Ratio) LTBI / new TB
Total	380	746	0.55
Hokkaido	8	26	0.63
Aomori	2	2	0.15
Iwate	3	6	0.55
Miyagi	8	16	1.14
Akita	4	7	0.47
Yamagata	4	5	1.67
Fukushima	2	5	0.50
Ibaraki	17	34	0.97
Tochigi	1	5	0.29
Gunma	3	5	0.29
Saitama	32	56	0.60
Chiba	15	53	0.63
Tokyo	38	81	0.52
Kanagawa	30	45	0.61
Niigata	2	9	0.56
Toyama	5	11	1.57
Ishikawa	4	8	0.80
Fukui	0	0	0.00
Yamanashi	0	2	0.33
Nagano	4	8	0.73
Gifu	8	13	0.54
Shizuoka	10	15	0.31
Aichi	22	42	0.46
Mie	4	7	0.41
Shiga	0	4	0.31
Kyoto	13	24	0.63
Osaka	26	61	0.52
Hyogo	21	35	0.52
Nara	1	6	0.46
Wakayama	4	6	1.00
Tottori	0	1	0.33
Shimane	4	7	0.58
Okayama	5	12	0.48
Hiroshima	16	21	0.95
Yamaguchi	2	4	0.36
Tokushima	2	2	0.22
Kagawa	3	6	0.75
Ehime	6	8	1.00
Kochi	1	3	0.43
Fukuoka	21	39	0.50
Saga	2	2	0.20
Nagasaki	2	4	0.22
Kumamoto	5	8	0.44
Oita	5	6	0.35
Miyazaki	2	4	0.40
Kagoshima	4	8	0.38
Okinawa	9	14	0.82

LTBI: Latent TB Infection

Number of LTBI is not included in the newly notified TB patients.

Table 7. LTBI cases and rates by major city, Japan, 2024

	Feb.	Summation (Jan.-Feb.)	
	LTBI	LTBI	(Ratio) LTBI / new TB
Total	130	259	0.56
Sapporo City	3	10	0.59
Sendai City	3	4	1.00
Saitama City	6	9	0.43
Chiba City	8	16	0.76
Yokohama City	9	20	0.57
Kawasaki City	10	11	0.79
Sagamihara City	3	5	1.25
Niigata City	1	7	0.64
Shizuoka City	1	1	0.09
Hamamatsu City	3	3	0.20
Nagoya City	6	14	0.34
Kyoto City	5	11	0.39
Osaka City	4	21	0.55
Sakai City	7	11	1.00
Kobe City	11	17	1.06
Okayama City	4	8	0.57
Hiroshima City	1	2	1.00
Kitakyushu City	5	11	0.85
Fukuoka City	9	16	0.67
Kumamoto City	1	1	0.13
23-ku area of Tokyo	30	61	0.54

LTBI: Latent TB Infection

Number of LTBI is not included in the newly notified TB patients,

Major city: city with a population of one million or more

Table 7 is a re-count of Table 6