



## Monthly Report of Tuberculosis Surveillance, Japan - March, 2024

The reporting and recording of tuberculosis (TB) and Latent TB Infection (LTBI) are managed at public health centers (PHCs) by the nationwide computerized TB surveillance system in Japan. A monthly report is compiled from the database automatically and regularly on 4<sup>th</sup> Friday of the next month, and an annual report is also produced much like the monthly report, but with sufficient time for data correction.

Tables and figures shown in the monthly reports are as follows.

### Figures

Figure 1. Number of newly notified TB cases by month, Japan, 2021-2024

Figure 2. Newly notified TB cases by sex and age, Japan, summation (Jan. -Mar.) 2024

Figure 3. Notification rate of TB cases by sex and age, Japan, summation (Jan. -Mar.) 2024

Figure 4. Notification rate of TB by prefecture, Japan, summation (Jan. -Mar.) 2024

Figure 5. Notification rate of TB by major city, Japan, summation (Jan. -Mar.) 2024

Figure 6. Number of LTBI, Japan, 2021-2024

Figure 7. Number of LTBI by sex and age group, Japan, summation (Jan. -Mar.) 2024

### Tables

Table 1. Newly notified TB cases and rates by sex and age, Japan, 2024

Table 2. Newly notified sputum smear positive pulmonary TB cases and rates by sex and age, Japan, 2024

Table 3. Newly notified TB cases and rates by prefecture, Japan, 2024

Table 4. Newly notified TB cases and rates by major city, Japan, 2024

Table 5. LTBI cases and rates by sex and age, Japan, 2024

Table 6. LTBI cases and rates by prefecture, Japan, 2024

Table 7. LTBI cases and rates by major city, Japan, 2024

Figure 1. Number of newly notified TB cases by month, Japan, 2021-2024

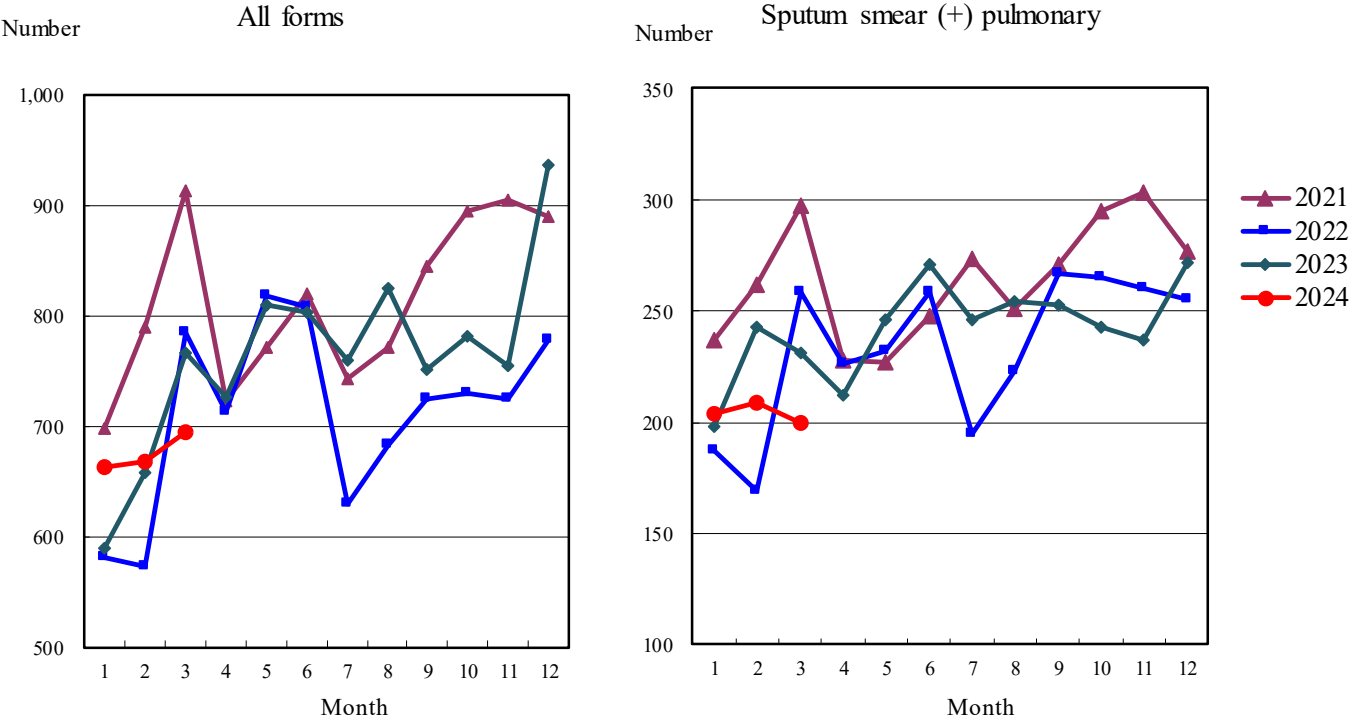


Figure 2. Newly notified TB patients by sex and age, Japan, summation (Jan.-Mar.) 2024

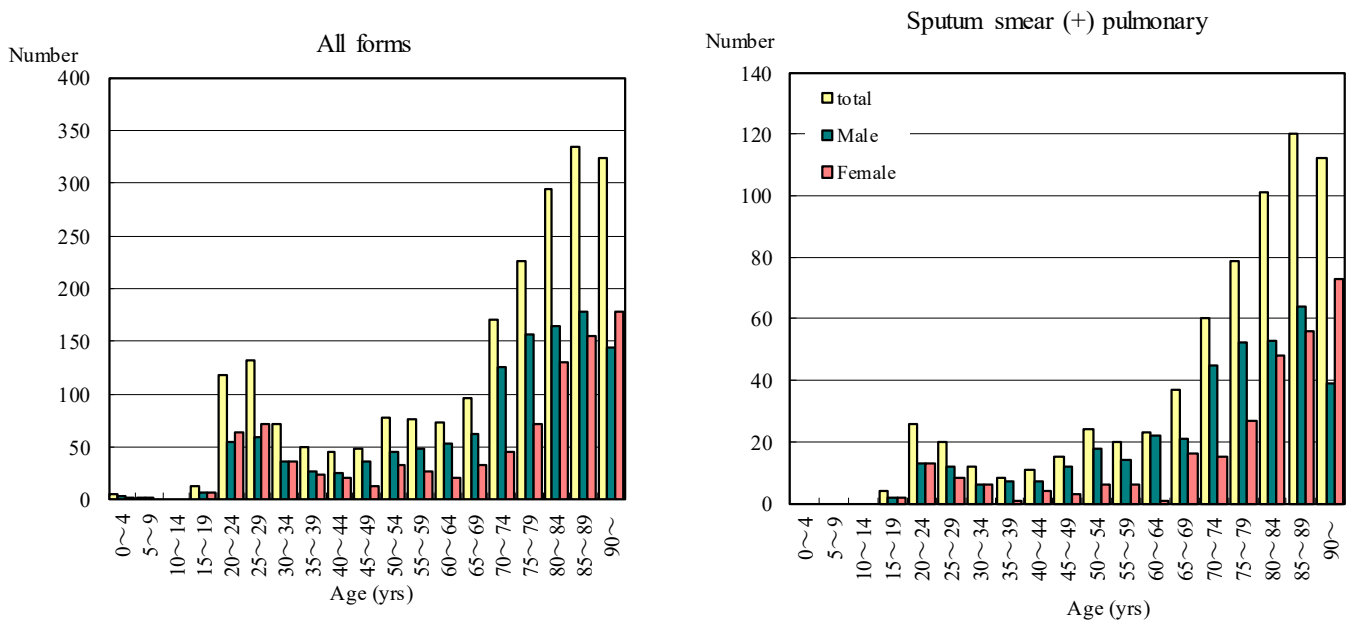


Figure 3. Notification rate of TB cases by sex and age, Japan, summation (Jan.-Mar.) 2024

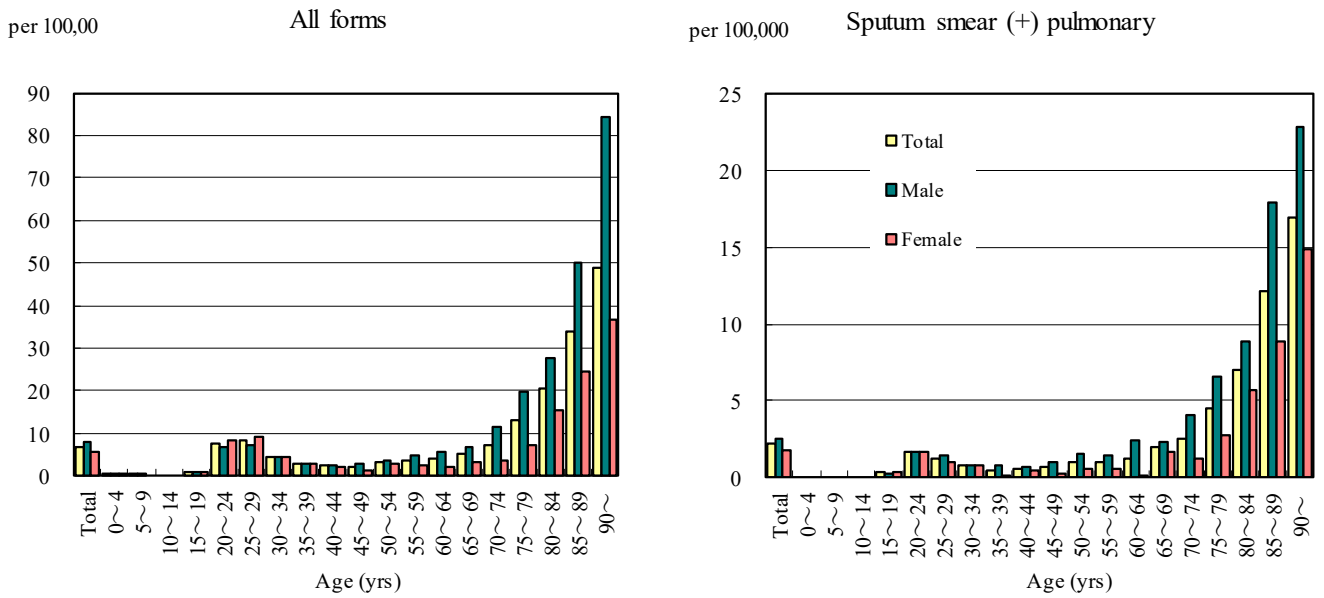


Figure 4. Notification rates of TB by prefecture, Japan, summation (Jan.-Mar.) 2024

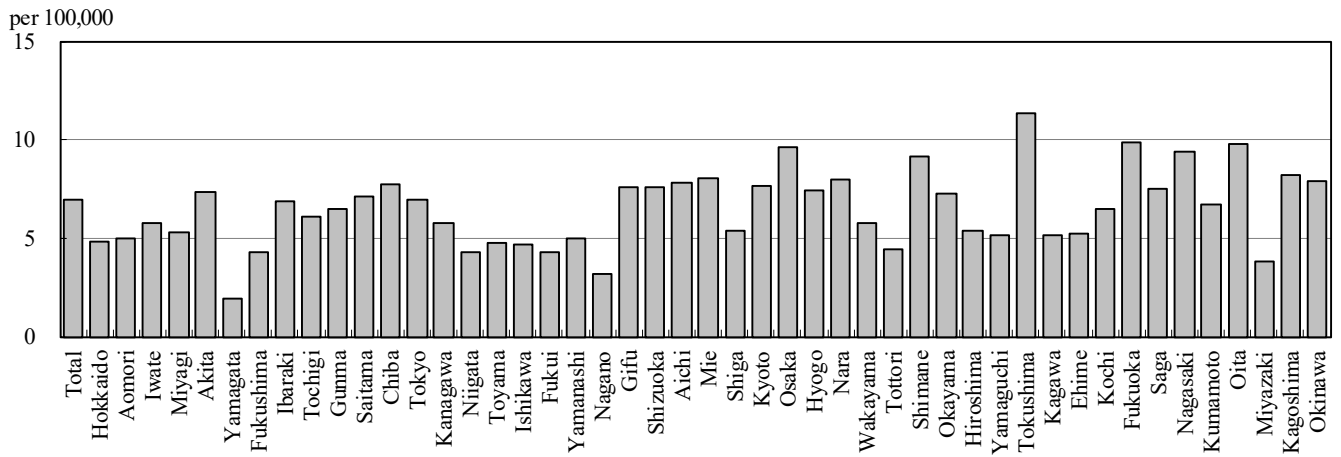


Figure 5. Notification rates of TB major city, Japan, summation (Jan.-Mar.) 2024

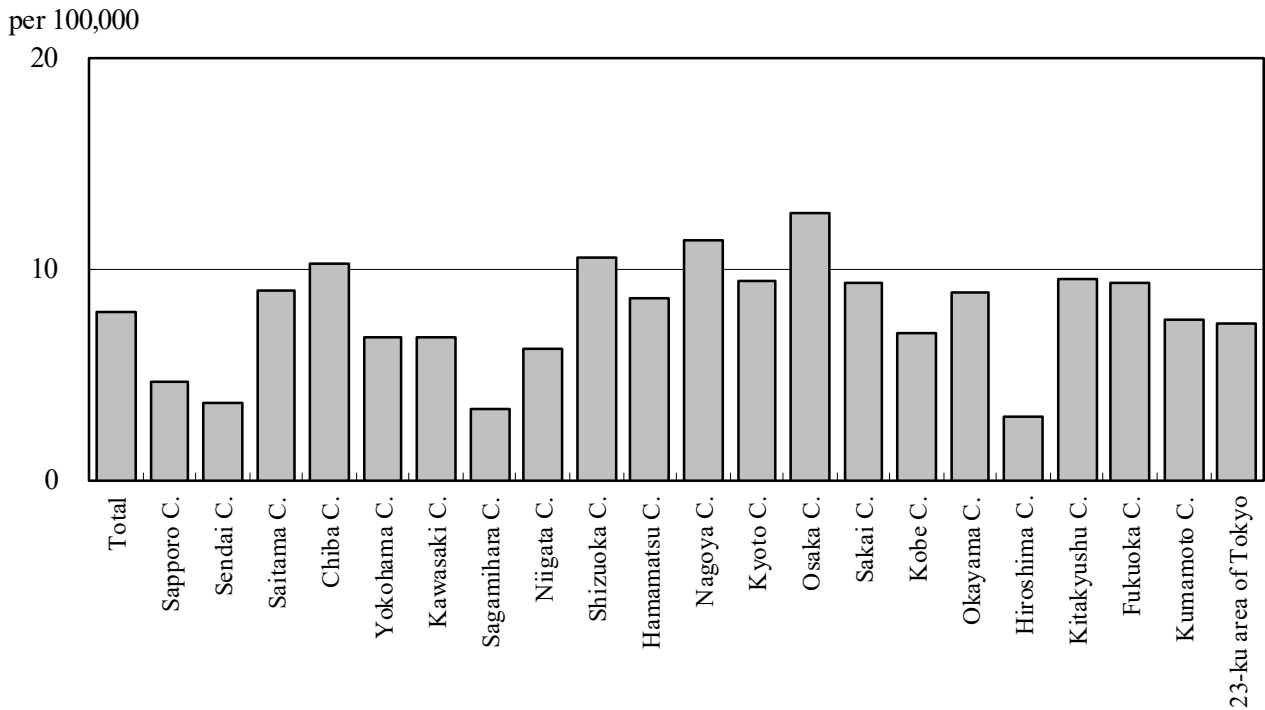


Figure 6. Number of LTBI, Japan, 2021-2024

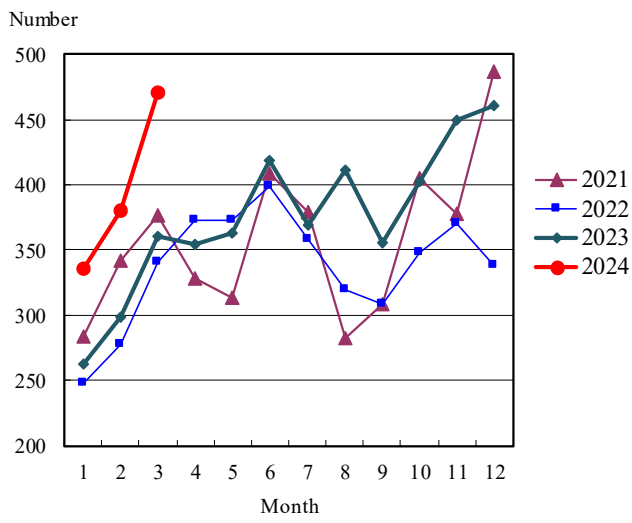


Figure 7. Number of LTBI by sex and age group, Japan, summation (Jan.-Mar.) 2024

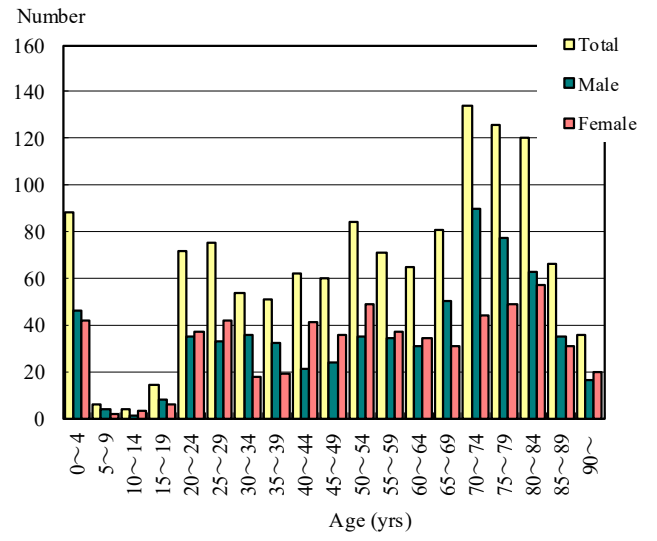


Table 1. Newly notified TB cases and rates by sex and age, Japan, 2024

	Mar.			Summation (Jan.-Mar.)			Notification rate (per 100,000)		
	Total	Male	Female	Total	Male	Female	Total	Male	Female
Total	695	403	292	2,159	1,228	931	6.9	8.1	5.8
0~4	1	1	0	5	3	2	0.5	0.6	0.4
5~9	0	0	0	2	2	0	0.2	0.3	0.0
10~14	0	0	0	0	0	0	0.0	0.0	0.0
15~19	4	1	3	13	7	6	0.9	1.0	0.9
20~24	42	20	22	118	54	64	7.5	6.7	8.4
25~29	45	19	26	132	60	72	8.2	7.3	9.2
30~34	25	16	9	72	36	36	4.5	4.4	4.6
35~39	21	9	12	50	26	24	2.8	2.8	2.7
40~44	13	5	8	46	25	21	2.3	2.5	2.1
45~49	16	13	3	49	36	13	2.1	3.0	1.1
50~54	25	17	8	78	45	33	3.3	3.8	2.8
55~59	22	14	8	76	49	27	3.8	4.9	2.7
60~64	21	16	5	73	53	20	3.9	5.8	2.1
65~69	33	25	8	96	63	33	5.1	6.9	3.4
70~74	57	43	14	170	125	45	7.3	11.4	3.6
75~79	64	51	13	227	156	71	12.9	19.8	7.3
80~84	93	48	45	295	165	130	20.5	27.6	15.5
85~89	109	54	55	334	179	155	33.8	50.1	24.6
90~	104	51	53	323	144	179	49.0	84.5	36.6

Temporary registrants = 48, Total of registrants and temporary registrants = 743

Rate: summation / (population\*3/12)\*100,000

Population: as of 1st Oct. 2022

Table 2. Newly notified sputum smear positive pulmonary TB cases and rates by sex and age, Japan, 2024

	Mar.			Summation (Jan.-Mar.)			Notification rate (per 100,000)		
	Total	Male	Female	Total	Male	Female	Total	Male	Female
Total	200	114	86	672	387	285	2.2	2.5	1.8
0~4	0	0	0	0	0	0	0.0	0.0	0.0
5~9	0	0	0	0	0	0	0.0	0.0	0.0
10~14	0	0	0	0	0	0	0.0	0.0	0.0
15~19	1	0	1	4	2	2	0.3	0.3	0.3
20~24	6	2	4	26	13	13	1.7	1.6	1.7
25~29	3	1	2	20	12	8	1.2	1.5	1.0
30~34	3	2	1	12	6	6	0.7	0.7	0.8
35~39	2	1	1	8	7	1	0.4	0.8	0.1
40~44	2	0	2	11	7	4	0.6	0.7	0.4
45~49	4	4	0	15	12	3	0.6	1.0	0.3
50~54	6	4	2	24	18	6	1.0	1.5	0.5
55~59	3	3	0	20	14	6	1.0	1.4	0.6
60~64	6	5	1	23	22	1	1.2	2.4	0.1
65~69	10	6	4	37	21	16	2.0	2.3	1.7
70~74	17	14	3	60	45	15	2.6	4.1	1.2
75~79	22	16	6	79	52	27	4.5	6.6	2.8
80~84	40	23	17	101	53	48	7.0	8.9	5.7
85~89	37	18	19	120	64	56	12.1	17.9	8.9
90~	38	15	23	112	39	73	17.0	22.9	14.9

Rate: summation / (population\*3/12)\*100,000

Population: as of 1st Oct. 2022

Table 3. Newly notified TB cases and rates by prefecture, Japan, 2024

	Mar.		Summation (Jan.-Mar.)		Notification rate (per 100,000)	
	Newly notified TB	Sputum smear (+)	Newly notified TB	Sputum smear (+)	Newly notified TB	Sputum smear (+)
Total	695	200	2,159	672	6.9	2.2
Hokkaido	17	5	62	16	4.8	1.2
Aomori	2	2	15	8	5.0	2.7
Iwate	5	3	17	4	5.8	1.4
Miyagi	15	5	30	8	5.3	1.4
Akita	3	1	17	5	7.3	2.2
Yamagata	2	0	5	0	1.9	0.0
Fukushima	7	3	19	9	4.2	2.0
Ibaraki	12	2	49	11	6.9	1.5
Tochigi	8	2	29	9	6.1	1.9
Gunma	8	3	31	8	6.5	1.7
Saitama	38	9	131	50	7.1	2.7
Chiba	33	7	121	34	7.7	2.2
Tokyo	87	14	244	68	7.0	1.9
Kanagawa	47	11	134	39	5.8	1.7
Niigata	4	0	23	7	4.3	1.3
Toyama	5	1	12	3	4.7	1.2
Ishikawa	2	1	13	3	4.7	1.1
Fukui	4	1	8	1	4.3	0.5
Yamanashi	4	0	10	3	5.0	1.5
Nagano	5	4	16	6	3.2	1.2
Gifu	11	3	37	8	7.6	1.6
Shizuoka	17	6	68	22	7.6	2.5
Aichi	53	17	147	43	7.8	2.3
Mie	17	9	35	12	8.0	2.8
Shiga	6	2	19	6	5.4	1.7
Kyoto	9	4	49	18	7.7	2.8
Osaka	58	22	212	91	9.7	4.1
Hyogo	34	10	100	29	7.4	2.1
Nara	13	1	26	2	8.0	0.6
Wakayama	7	4	13	4	5.8	1.8
Tottori	3	2	6	2	4.4	1.5
Shimane	3	0	15	3	9.1	1.8
Okayama	9	2	34	8	7.3	1.7
Hiroshima	10	1	37	6	5.4	0.9
Yamaguchi	6	0	17	4	5.2	1.2
Tokushima	11	3	20	6	11.4	3.4
Kagawa	4	0	12	1	5.1	0.4
Ehime	9	2	17	5	5.2	1.5
Kochi	4	3	11	4	6.5	2.4
Fukuoka	47	16	126	46	9.9	3.6
Saga	5	2	15	6	7.5	3.0
Nagasaki	11	2	30	6	9.4	1.9
Kumamoto	11	5	29	13	6.8	3.0
Oita	10	6	27	11	9.8	4.0
Miyazaki	0	0	10	4	3.8	1.5
Kagoshima	7	1	32	9	8.2	2.3
Okinawa	12	3	29	11	7.9	3.0

Rate: summation / (population\*3/12)\*100,000

Population: as of 1st Oct. 2022

Table 4. Newly notified TB cases and rates by major city, Japan, 2024

	Mar.		Summation (Jan.-Mar.)		Notification Rate (per 100,000)	
	Newly notified TB	Sputum Smear(+)	Newly notified TB	Sputum Smear(+)	Newly notified TB	Sputum Smear(+)
Total	225	63	742	246	7.9	2.6
Sapporo City	4	2	23	9	4.7	1.8
Sendai City	6	1	10	2	3.6	0.7
Saitama City	9	1	30	8	9.0	2.4
Chiba City	4	1	25	9	10.2	3.7
Yokohama City	19	5	64	18	6.8	1.9
Kawasaki City	12	4	26	7	6.7	1.8
Sagamihara City	2	0	6	3	3.3	1.7
Niigata City	1	0	12	4	6.2	2.1
Shizuoka City	6	2	18	7	10.5	4.1
Hamamatsu City	2	1	17	4	8.6	2.0
Nagoya City	23	8	66	23	11.4	4.0
Kyoto City	6	2	34	9	9.4	2.5
Osaka City	17	6	87	37	12.6	5.4
Sakai City	5	4	19	11	9.3	5.4
Kobe City	10	6	26	10	6.9	2.6
Okayama City	3	1	16	5	8.9	2.8
Hiroshima City	3	1	9	3	3.0	1.0
Kitakyushu City	9	2	22	5	9.5	2.2
Fukuoka City	13	3	38	19	9.3	4.7
Kumamoto City	6	1	14	6	7.6	3.3
23-ku area of Tokyo	65	12	180	47	7.4	1.9

Rate: summation / (population\*3/12)\*100,000

Population: as of 1st Oct. 2022

Major city: city with a population of one million or more.

Table 4 is a re-count of Table 3.

Table 5. LTBI cases and rates by sex and age, Japan, 2024

	Mar.			Summation (Jan.-Mar.)			(Ratio) LTBI/Newly notified cases		
	Total	Male	Female	Total	Male	Female	Total	Male	Female
Total	471	239	232	1,269	671	598	0.6	0.5	0.6
0~4	22	13	9	88	46	42	17.6	15.3	21.0
5~9	2	1	1	6	4	2	3.0	2.0	-
10~14	1	0	1	4	1	3	-	-	-
15~19	4	2	2	14	8	6	1.1	1.1	1.0
20~24	33	18	15	72	35	37	0.6	0.6	0.6
25~29	29	13	16	75	33	42	0.6	0.6	0.6
30~34	26	16	10	54	36	18	0.8	1.0	0.5
35~39	22	15	7	51	32	19	1.0	1.2	0.8
40~44	21	6	15	62	21	41	1.3	0.8	2.0
45~49	25	8	17	60	24	36	1.2	0.7	2.8
50~54	32	10	22	84	35	49	1.1	0.8	1.5
55~59	28	14	14	71	34	37	0.9	0.7	1.4
60~64	22	11	11	65	31	34	0.9	0.6	1.7
65~69	26	17	9	81	50	31	0.8	0.8	0.9
70~74	48	29	19	134	90	44	0.8	0.7	1.0
75~79	47	28	19	126	77	49	0.6	0.5	0.7
80~84	42	18	24	120	63	57	0.4	0.4	0.4
85~89	23	10	13	66	35	31	0.2	0.2	0.2
90~	18	10	8	36	16	20	0.1	0.1	0.1

LTBI: latent TB Infection

Number of LTBI is not included in the newly notified TB patients



Table 6. LTBI cases and rates by prefecture, Japan, 2024

	Mar.	Summation (Jan.-Mar.)	
	LTBI	LTBI	(Ratio) LTBI / new TB
Total	471	1,269	0.59
Hokkaido	12	40	0.65
Aomori	5	7	0.47
Iwate	2	8	0.47
Miyagi	4	21	0.70
Akita	0	7	0.41
Yamagata	1	7	1.40
Fukushima	2	7	0.37
Ibaraki	12	46	0.94
Tochigi	2	8	0.28
Gunma	13	19	0.61
Saitama	25	81	0.62
Chiba	29	85	0.70
Tokyo	65	151	0.62
Kanagawa	33	85	0.63
Niigata	7	16	0.70
Toyama	4	15	1.25
Ishikawa	4	12	0.92
Fukui	0	1	0.13
Yamanashi	3	5	0.50
Nagano	4	12	0.75
Gifu	7	19	0.51
Shizuoka	11	29	0.43
Aichi	21	66	0.45
Mie	1	8	0.23
Shiga	0	4	0.21
Kyoto	17	40	0.82
Osaka	34	117	0.55
Hyogo	21	57	0.57
Nara	7	13	0.50
Wakayama	3	9	0.69
Tottori	1	2	0.33
Shimane	2	9	0.60
Okayama	10	22	0.65
Hiroshima	12	33	0.89
Yamaguchi	5	11	0.65
Tokushima	1	3	0.15
Kagawa	3	9	0.75
Ehime	1	9	0.53
Kochi	2	3	0.27
Fukuoka	44	84	0.67
Saga	5	7	0.47
Nagasaki	5	9	0.30
Kumamoto	6	14	0.48
Oita	4	10	0.37
Miyazaki	1	5	0.50
Kagoshima	1	9	0.28
Okinawa	19	35	1.21

LTBI: Latent TB Infection

Number of LTBI is not included in the newly notified TB patients.

Table 7. LTBI cases and rates by major city, Japan, 2024

	Mar.	Summation (Jan.-Mar.)	
	LTBI	LTBI	(Ratio) LTBI / new TB
Total	148	446	0.60
Sapporo City	7	19	0.83
Sendai City	0	4	0.40
Saitama City	3	12	0.40
Chiba City	2	18	0.72
Yokohama City	9	34	0.53
Kawasaki City	6	17	0.65
Sagamihara City	7	12	2.00
Niigata City	2	9	0.75
Shizuoka City	0	4	0.22
Hamamatsu City	0	3	0.18
Nagoya City	8	24	0.36
Kyoto City	8	19	0.56
Osaka City	10	53	0.61
Sakai City	9	20	1.05
Kobe City	10	27	1.04
Okayama City	6	14	0.88
Hiroshima City	1	3	0.33
Kitakyushu City	4	15	0.68
Fukuoka City	11	27	0.71
Kumamoto City	4	5	0.36
23-ku area of Tokyo	41	107	0.59

LTBI: Latent TB Infection

Number of LTBI is not included in the newly notified TB patients,

Major city: city with a population of one million or more

Table 7 is a re-count of Table 6