



Monthly Report of Tuberculosis Surveillance, Japan - April, 2024

The reporting and recording of tuberculosis (TB) and Latent TB Infection (LTBI) are managed at public health centers (PHCs) by the nationwide computerized TB surveillance system in Japan. A monthly report is compiled from the database automatically and regularly on 4th Friday of the next month, and an annual report is also produced much like the monthly report, but with sufficient time for data correction.

Tables and figures shown in the monthly reports are as follows.

Figures

Figure 1. Number of newly notified TB cases by month, Japan, 2021-2024

Figure 2. Newly notified TB cases by sex and age, Japan, summation (Jan. -Apr.) 2024

Figure 3. Notification rate of TB cases by sex and age, Japan, summation (Jan. -Apr.) 2024

Figure 4. Notification rate of TB by prefecture, Japan, summation (Jan. -Apr.) 2024

Figure 5. Notification rate of TB by major city, Japan, summation (Jan. -Apr.) 2024

Figure 6. Number of LTBI, Japan, 2021-2024

Figure 7. Number of LTBI by sex and age group, Japan, summation (Jan. -Apr.) 2024

Tables

Table 1. Newly notified TB cases and rates by sex and age, Japan, 2024

Table 2. Newly notified sputum smear positive pulmonary TB cases and rates by sex and age, Japan, 2024

Table 3. Newly notified TB cases and rates by prefecture, Japan, 2024

Table 4. Newly notified TB cases and rates by major city, Japan, 2024

Table 5. LTBI cases and rates by sex and age, Japan, 2024

Table 6. LTBI cases and rates by prefecture, Japan, 2024

Table 7. LTBI cases and rates by major city, Japan, 2024

Figure 1. Number of newly notified TB cases by month, Japan, 2021-2024

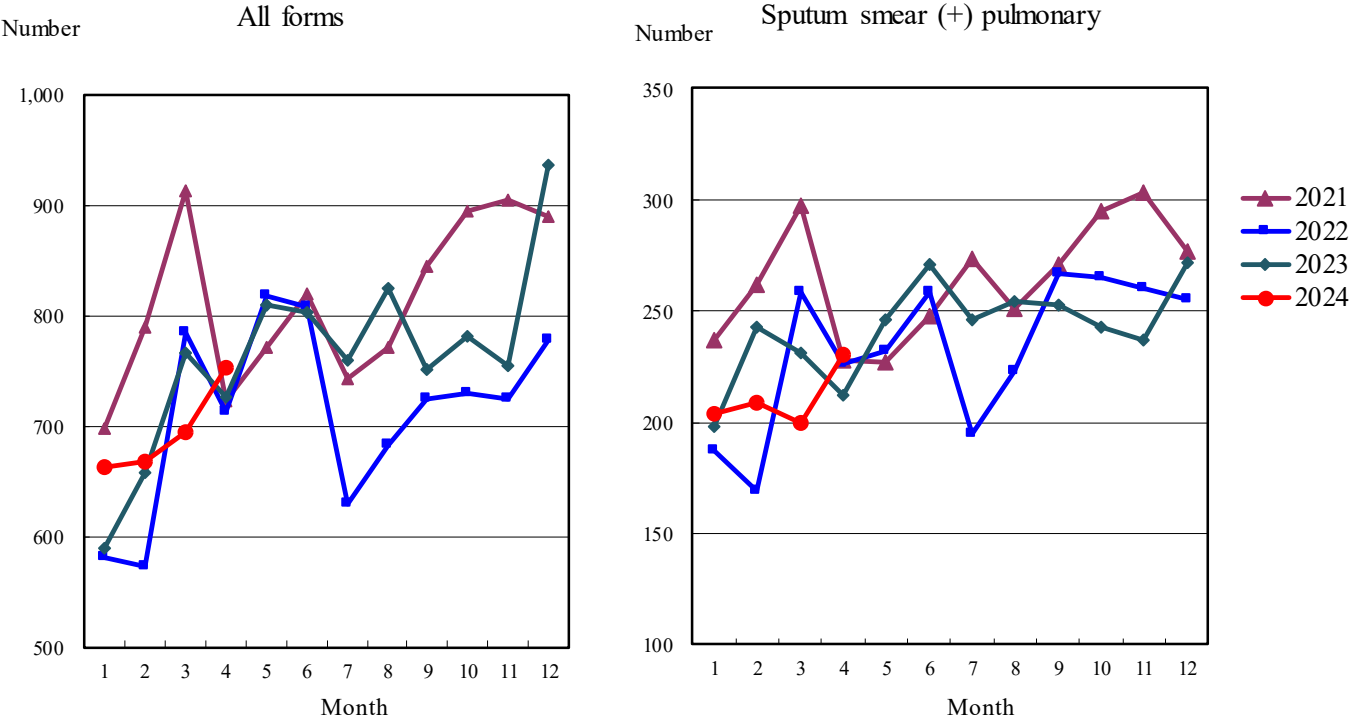


Figure 2. Newly notified TB patients by sex and age, Japan, summation (Jan.-Apr.) 2024

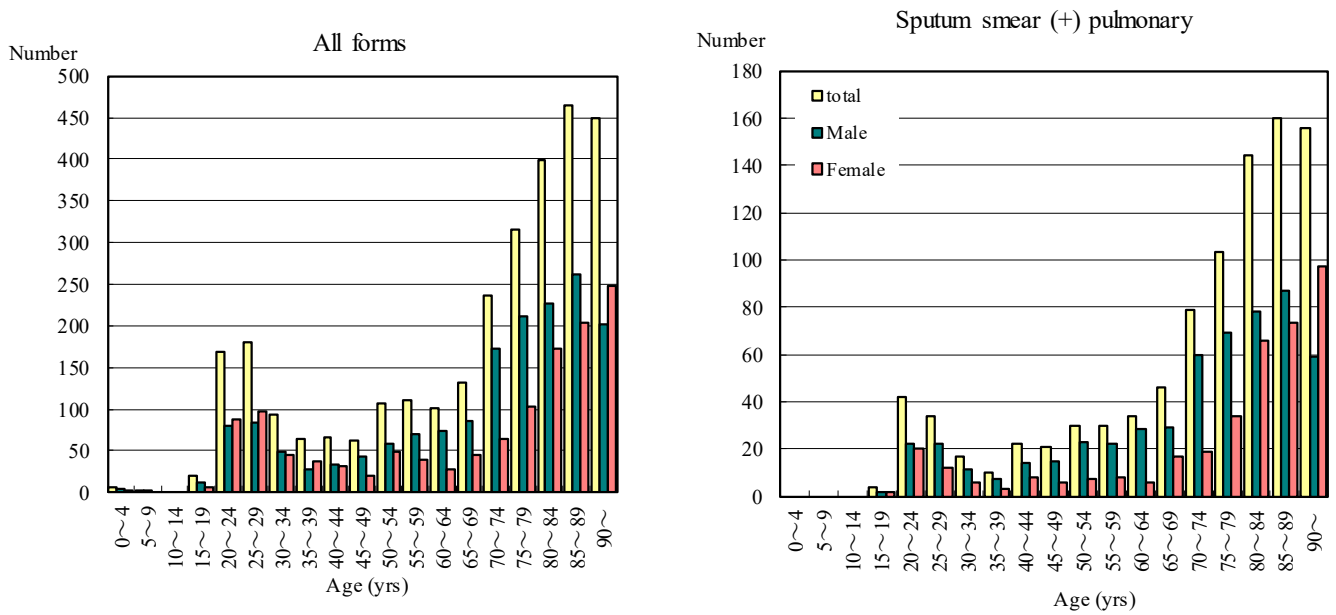


Figure 3. Notification rate of TB cases by sex and age, Japan, summation (Jan.-Apr.) 2024

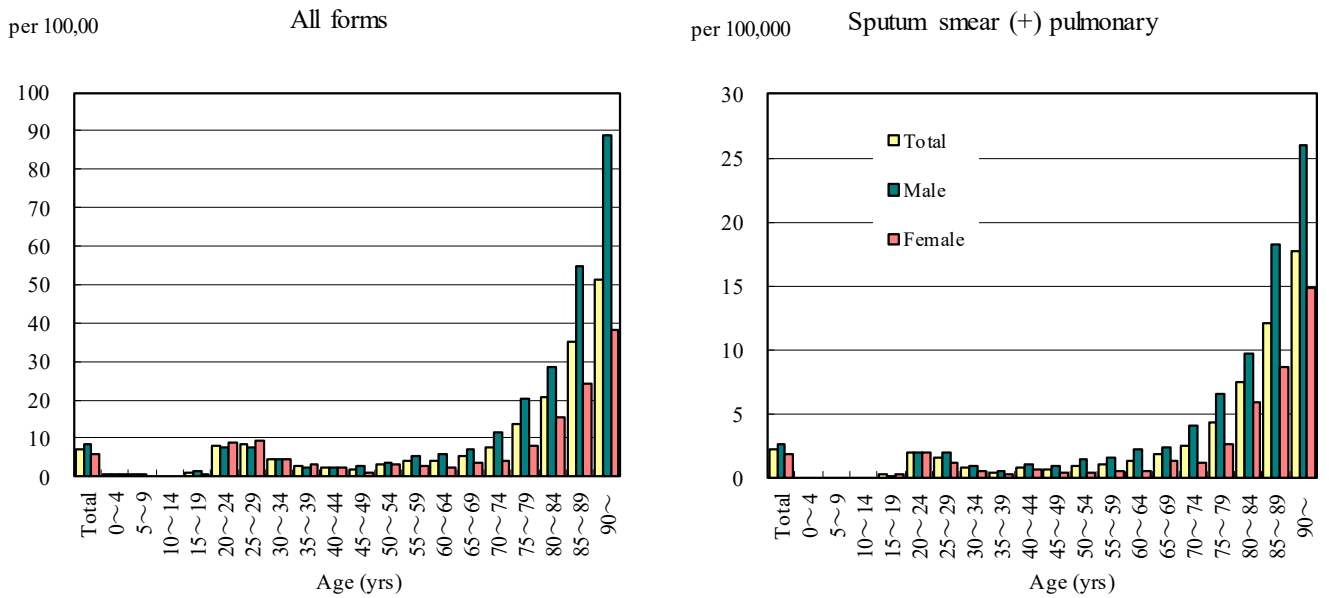


Figure 4. Notification rates of TB by prefecture, Japan, summation (Jan.-Apr.) 2024

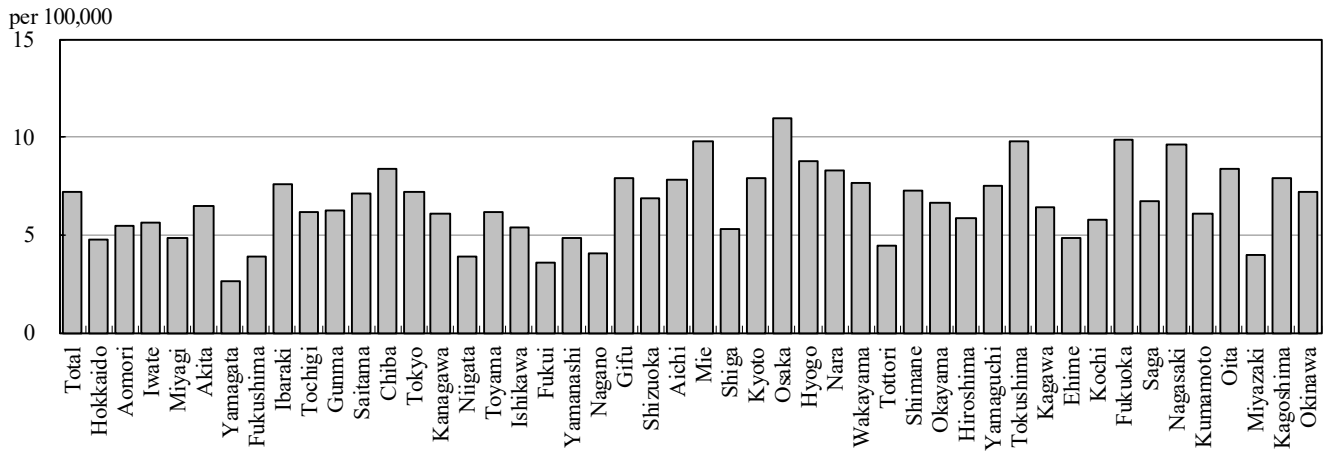


Figure 5. Notification rates of TB major city, Japan, summation (Jan.-Apr.) 2024

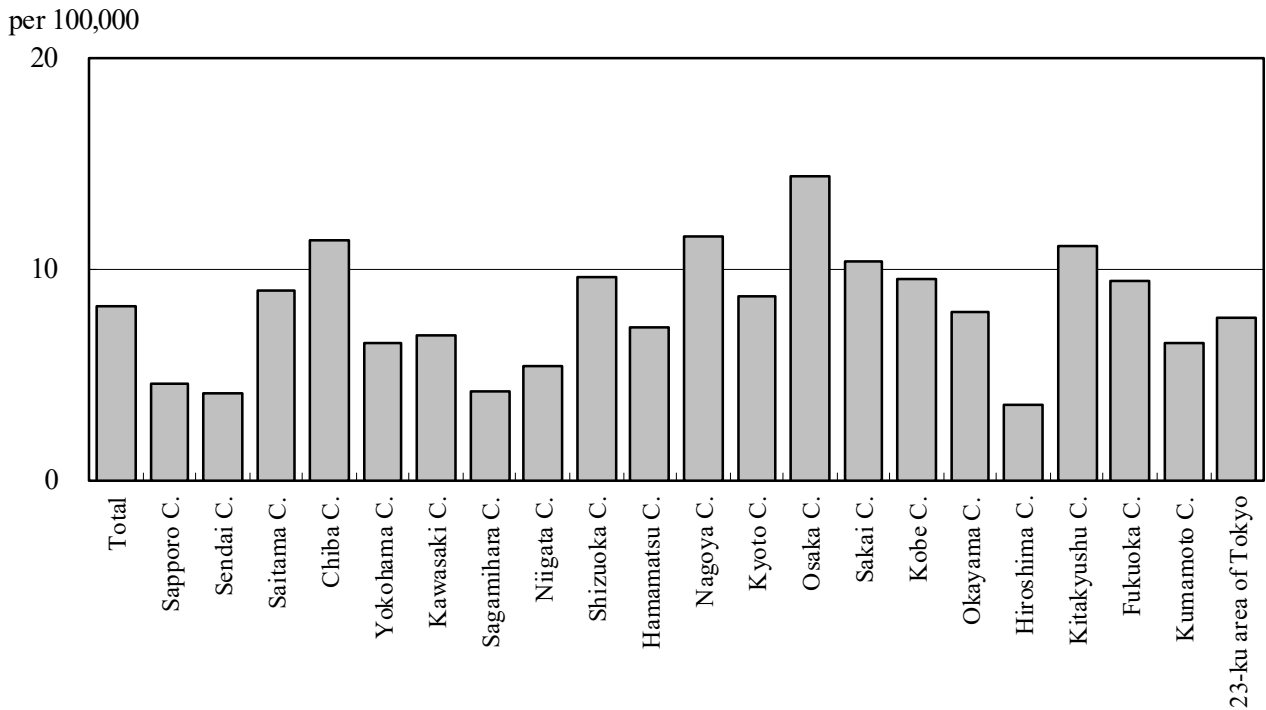


Figure 6. Number of LTBI, Japan, 2021-2024

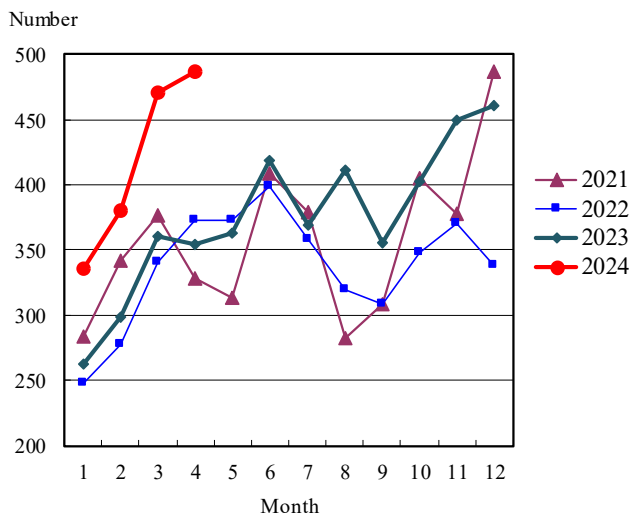


Figure 7. Number of LTBI by sex and age group, Japan, summation (Jan.-Apr.) 2024

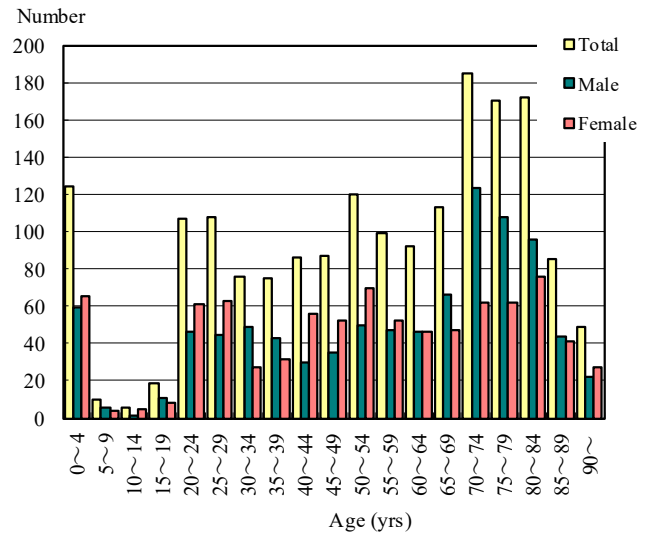


Table 1. Newly notified TB cases and rates by sex and age, Japan, 2024

	Apr.			Summation (Jan.-Apr.)			Notification rate (per 100,000)		
	Total	Male	Female	Total	Male	Female	Total	Male	Female
Total	753	424	329	2,983	1,699	1,284	7.2	8.4	6.0
0~4	2	1	1	7	4	3	0.5	0.6	0.4
5~9	0	0	0	2	2	0	0.1	0.2	0.0
10~14	0	0	0	0	0	0	0.0	0.0	0.0
15~19	7	6	1	20	13	7	1.1	1.4	0.8
20~24	48	24	24	168	80	88	8.0	7.5	8.7
25~29	46	22	24	181	84	97	8.5	7.6	9.3
30~34	21	12	9	94	49	45	4.4	4.5	4.3
35~39	13	1	12	64	27	37	2.7	2.2	3.1
40~44	20	9	11	66	34	32	2.5	2.5	2.5
45~49	13	7	6	63	44	19	2.0	2.8	1.2
50~54	28	13	15	107	58	49	3.4	3.7	3.1
55~59	28	18	10	111	71	40	4.1	5.3	3.0
60~64	27	20	7	102	74	28	4.1	6.0	2.2
65~69	33	20	13	132	86	46	5.3	7.0	3.6
70~74	58	41	17	237	172	65	7.6	11.7	4.0
75~79	80	49	31	316	212	104	13.5	20.2	8.0
80~84	90	51	39	398	226	172	20.8	28.3	15.4
85~89	123	77	46	465	261	204	35.3	54.8	24.2
90~	116	53	63	450	202	248	51.2	88.9	38.1

Temporary registrants = 41, Total of registrants and temporary registrants = 794

Rate: summation / (population*4/12)*100,000

Population: as of 1st Oct. 2022

Table 2. Newly notified sputum smear positive pulmonary TB cases and rates by sex and age, Japan, 2024

	Apr.			Summation (Jan.-Apr.)			Notification rate (per 100,000)		
	Total	Male	Female	Total	Male	Female	Total	Male	Female
Total	230	137	93	932	548	384	2.2	2.7	1.8
0~4	0	0	0	0	0	0	0.0	0.0	0.0
5~9	0	0	0	0	0	0	0.0	0.0	0.0
10~14	0	0	0	0	0	0	0.0	0.0	0.0
15~19	0	0	0	4	2	2	0.2	0.2	0.2
20~24	16	9	7	42	22	20	2.0	2.1	2.0
25~29	11	7	4	34	22	12	1.6	2.0	1.2
30~34	3	3	0	17	11	6	0.8	1.0	0.6
35~39	1	0	1	10	7	3	0.4	0.6	0.3
40~44	11	7	4	22	14	8	0.8	1.0	0.6
45~49	5	2	3	21	15	6	0.7	0.9	0.4
50~54	6	5	1	30	23	7	1.0	1.5	0.4
55~59	7	5	2	30	22	8	1.1	1.6	0.6
60~64	10	5	5	34	28	6	1.4	2.3	0.5
65~69	9	7	2	46	29	17	1.8	2.4	1.3
70~74	15	12	3	79	60	19	2.5	4.1	1.2
75~79	23	15	8	103	69	34	4.4	6.6	2.6
80~84	39	22	17	144	78	66	7.5	9.8	5.9
85~89	34	18	16	160	87	73	12.1	18.3	8.7
90~	40	20	20	156	59	97	17.7	26.0	14.9

Rate: summation / (population*4/12)*100,000

Population: as of 1st Oct. 2022

Table 3. Newly notified TB cases and rates by prefecture, Japan, 2024

	Apr.		Summation (Jan.-Apr.)		Notification rate (per 100,000)	
	Newly notified TB	Sputum smear (+)	Newly notified TB	Sputum smear (+)	Newly notified TB	Sputum smear (+)
Total	753	230	2,983	932	7.2	2.2
Hokkaido	15	2	81	20	4.7	1.2
Aomori	6	0	22	8	5.5	2.0
Iwate	5	3	22	7	5.6	1.8
Miyagi	6	2	37	10	4.9	1.3
Akita	4	1	20	5	6.5	1.6
Yamagata	3	0	9	0	2.6	0.0
Fukushima	4	2	23	11	3.9	1.8
Ibaraki	16	5	72	20	7.6	2.1
Tochigi	8	4	39	13	6.1	2.0
Gunma	8	3	40	12	6.3	1.9
Saitama	39	8	173	58	7.1	2.4
Chiba	43	15	174	56	8.3	2.7
Tokyo	93	27	338	97	7.2	2.1
Kanagawa	52	13	187	50	6.1	1.6
Niigata	4	2	28	10	3.9	1.4
Toyama	8	2	21	5	6.2	1.5
Ishikawa	7	2	20	5	5.4	1.3
Fukui	1	1	9	2	3.6	0.8
Yamanashi	3	2	13	5	4.9	1.9
Nagano	10	5	27	12	4.0	1.8
Gifu	14	2	51	11	7.9	1.7
Shizuoka	10	3	82	27	6.9	2.3
Aichi	46	16	196	60	7.8	2.4
Mie	22	8	57	20	9.8	3.4
Shiga	5	2	25	9	5.3	1.9
Kyoto	17	4	67	22	7.9	2.6
Osaka	93	28	321	123	11.0	4.2
Hyogo	57	17	158	47	8.8	2.6
Nara	10	3	36	5	8.3	1.1
Wakayama	9	2	23	7	7.6	2.3
Tottori	2	1	8	3	4.4	1.7
Shimane	1	0	16	3	7.3	1.4
Okayama	8	2	41	10	6.6	1.6
Hiroshima	9	3	54	11	5.9	1.2
Yamaguchi	16	5	33	9	7.5	2.1
Tokushima	3	0	23	6	9.8	2.6
Kagawa	8	3	20	4	6.4	1.3
Ehime	4	1	21	6	4.8	1.4
Kochi	2	0	13	4	5.8	1.8
Fukuoka	42	19	168	65	9.9	3.8
Saga	3	2	18	8	6.7	3.0
Nagasaki	11	2	41	8	9.6	1.9
Kumamoto	6	1	35	14	6.1	2.4
Oita	4	2	31	13	8.4	3.5
Miyazaki	4	2	14	6	4.0	1.7
Kagoshima	7	2	41	12	7.9	2.3
Okinawa	5	1	35	13	7.2	2.7

Rate: summation / (population*4/12)*100,000

Population: as of 1st Oct. 2022

Table 4. Newly notified TB cases and rates by major city, Japan, 2024

	Apr.		Summation (Jan.-Apr.)		Notification Rate (per 100,000)	
	Newly notified TB	Sputum Smear(+)	Newly notified TB	Sputum Smear(+)	Newly notified TB	Sputum Smear(+)
Total	254	88	1,025	341	8.2	2.7
Sapporo City	4	2	30	12	4.6	1.8
Sendai City	5	1	15	3	4.1	0.8
Saitama City	10	5	40	13	9.0	2.9
Chiba City	10	3	37	14	11.3	4.3
Yokohama City	15	2	81	20	6.4	1.6
Kawasaki City	9	4	35	11	6.8	2.1
Sagamihara City	4	1	10	4	4.1	1.7
Niigata City	2	1	14	5	5.4	1.9
Shizuoka City	0	0	22	9	9.6	3.9
Hamamatsu City	2	1	19	5	7.2	1.9
Nagoya City	23	11	89	34	11.5	4.4
Kyoto City	8	2	42	11	8.7	2.3
Osaka City	30	6	132	46	14.4	5.0
Sakai City	9	5	28	16	10.3	5.9
Kobe City	22	7	48	17	9.5	3.4
Okayama City	3	1	19	6	7.9	2.5
Hiroshima City	2	1	14	4	3.5	1.0
Kitakyushu City	12	6	34	11	11.0	3.6
Fukuoka City	13	6	51	25	9.4	4.6
Kumamoto City	2	0	16	6	6.5	2.4
23-ku area of Tokyo	69	23	249	69	7.7	2.1

Rate: summation / (population*4/12)*100,000

Population: as of 1st Oct. 2022

Major city: city with a population of one million or more.

Table 4 is a re-count of Table 3.

Table 5. LTBI cases and rates by sex and age, Japan, 2024

	Apr.			Summation (Jan.-Apr.)			(Ratio) LTBI/Newly notified cases		
	Total	Male	Female	Total	Male	Female	Total	Male	Female
Total	487	240	247	1,783	927	856	0.6	0.5	0.7
0~4	31	11	20	124	59	65	17.7	14.8	21.7
5~9	4	2	2	10	6	4	5.0	3.0	-
10~14	2	0	2	6	1	5	-	-	-
15~19	5	3	2	19	11	8	1.0	0.8	1.1
20~24	33	9	24	107	46	61	0.6	0.6	0.7
25~29	34	13	21	108	45	63	0.6	0.5	0.6
30~34	24	15	9	76	49	27	0.8	1.0	0.6
35~39	22	9	13	75	43	32	1.2	1.6	0.9
40~44	24	9	15	86	30	56	1.3	0.9	1.8
45~49	26	11	15	87	35	52	1.4	0.8	2.7
50~54	33	14	19	120	50	70	1.1	0.9	1.4
55~59	26	12	14	99	47	52	0.9	0.7	1.3
60~64	25	13	12	92	46	46	0.9	0.6	1.6
65~69	25	14	11	113	66	47	0.9	0.8	1.0
70~74	48	30	18	185	123	62	0.8	0.7	1.0
75~79	42	29	13	170	108	62	0.5	0.5	0.6
80~84	52	33	19	172	96	76	0.4	0.4	0.4
85~89	18	8	10	85	44	41	0.2	0.2	0.2
90~	13	5	8	49	22	27	0.1	0.1	0.1

LTBI: latent TB Infection

Number of LTBI is not included in the newly notified TB patients

Table 6. LTBI cases and rates by prefecture, Japan, 2024

	Apr.	Summation (Jan.-Apr.)	
	LTBI	LTBI	(Ratio) LTBI /new TB
Total	487	1,783	0.60
Hokkaido	20	61	0.75
Aomori	3	10	0.45
Iwate	5	13	0.59
Miyagi	6	27	0.73
Akita	2	9	0.45
Yamagata	2	9	1.00
Fukushima	4	11	0.48
Ibaraki	13	59	0.82
Tochigi	5	13	0.33
Gunma	7	26	0.65
Saitama	28	110	0.64
Chiba	36	123	0.71
Tokyo	50	201	0.59
Kanagawa	38	126	0.67
Niigata	3	21	0.75
Toyama	2	19	0.90
Ishikawa	4	16	0.80
Fukui	1	2	0.22
Yamanashi	2	7	0.54
Nagano	9	22	0.81
Gifu	6	25	0.49
Shizuoka	6	36	0.44
Aichi	13	83	0.42
Mie	5	13	0.23
Shiga	4	8	0.32
Kyoto	8	47	0.70
Osaka	53	182	0.57
Hyogo	31	89	0.56
Nara	5	18	0.50
Wakayama	7	18	0.78
Tottori	0	2	0.25
Shimane	0	9	0.56
Okayama	5	28	0.68
Hiroshima	12	45	0.83
Yamaguchi	4	15	0.45
Tokushima	4	7	0.30
Kagawa	4	13	0.65
Ehime	2	11	0.52
Kochi	0	3	0.23
Fukuoka	43	127	0.76
Saga	3	10	0.56
Nagasaki	6	15	0.37
Kumamoto	3	17	0.49
Oita	4	14	0.45
Miyazaki	2	7	0.50
Kagoshima	3	12	0.29
Okinawa	14	44	1.26

LTBI: Latent TB Infection

Number of LTBI is not included in the newly notified TB patients.

Table 7. LTBI cases and rates by major city, Japan, 2024

	Apr.	Summation (Jan.-Apr.)	
	LTBI	LTBI	(Ratio) LTBI / new TB
Total	184	647	0.63
Sapporo City	10	30	1.00
Sendai City	3	7	0.47
Saitama City	8	20	0.50
Chiba City	9	27	0.73
Yokohama City	18	55	0.68
Kawasaki City	8	25	0.71
Sagamihara City	2	14	1.40
Niigata City	3	12	0.86
Shizuoka City	0	5	0.23
Hamamatsu City	3	6	0.32
Nagoya City	1	25	0.28
Kyoto City	5	24	0.57
Osaka City	19	84	0.64
Sakai City	10	30	1.07
Kobe City	13	40	0.83
Okayama City	1	15	0.79
Hiroshima City	3	6	0.43
Kitakyushu City	10	25	0.74
Fukuoka City	17	44	0.86
Kumamoto City	2	7	0.44
23-ku area of Tokyo	39	146	0.59

LTBI: Latent TB Infection

Number of LTBI is not included in the newly notified TB patients,

Major city: city with a population of one million or more

Table 7 is a re-count of Table 6