



## Monthly Report of Tuberculosis Surveillance, Japan - June, 2024

The reporting and recording of tuberculosis (TB) and Latent TB Infection (LTBI) are managed at public health centers (PHCs) by the nationwide computerized TB surveillance system in Japan. A monthly report is compiled from the database automatically and regularly on 4<sup>th</sup> Friday of the next month, and an annual report is also produced much like the monthly report, but with sufficient time for data correction.

Tables and figures shown in the monthly reports are as follows.

### Figures

Figure 1. Number of newly notified TB cases by month, Japan, 2021-2024

Figure 2. Newly notified TB cases by sex and age, Japan, summation (Jan. -Jun.) 2024

Figure 3. Notification rate of TB cases by sex and age, Japan, summation (Jan. -Jun.) 2024

Figure 4. Notification rate of TB by prefecture, Japan, summation (Jan. -Jun.) 2024

Figure 5. Notification rate of TB by major city, Japan, summation (Jan. -Jun.) 2024

Figure 6. Number of LTBI, Japan, 2021-2024

Figure 7. Number of LTBI by sex and age group, Japan, summation (Jan. -Jun.) 2024

### Tables

Table 1. Newly notified TB cases and rates by sex and age, Japan, 2024

Table 2. Newly notified sputum smear positive pulmonary TB cases and rates by sex and age, Japan, 2024

Table 3. Newly notified TB cases and rates by prefecture, Japan, 2024

Table 4. Newly notified TB cases and rates by major city, Japan, 2024

Table 5. LTBI cases and rates by sex and age, Japan, 2024

Table 6. LTBI cases and rates by prefecture, Japan, 2024

Table 7. LTBI cases and rates by major city, Japan, 2024

Figure 1. Number of newly notified TB cases by month, Japan, 2021-2024

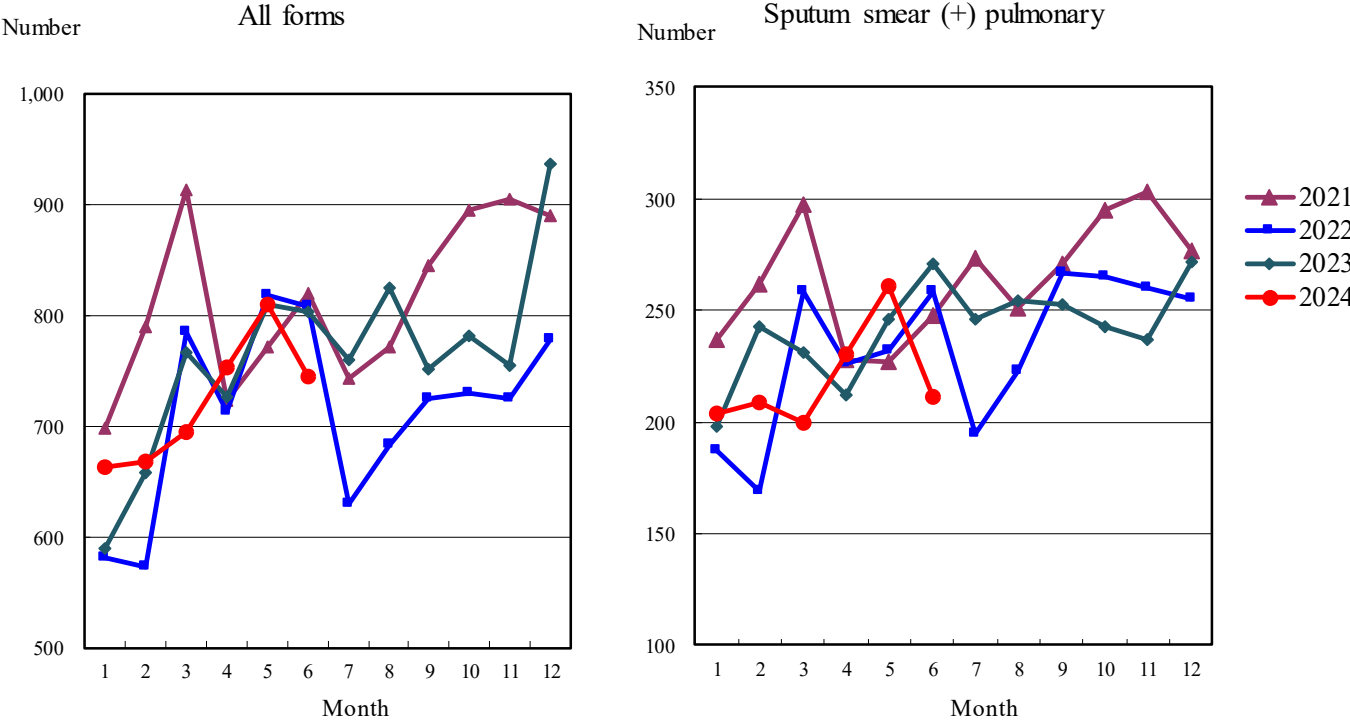


Figure 2. Newly notified TB patients by sex and age, Japan, summation (Jan.-Jun.) 2024

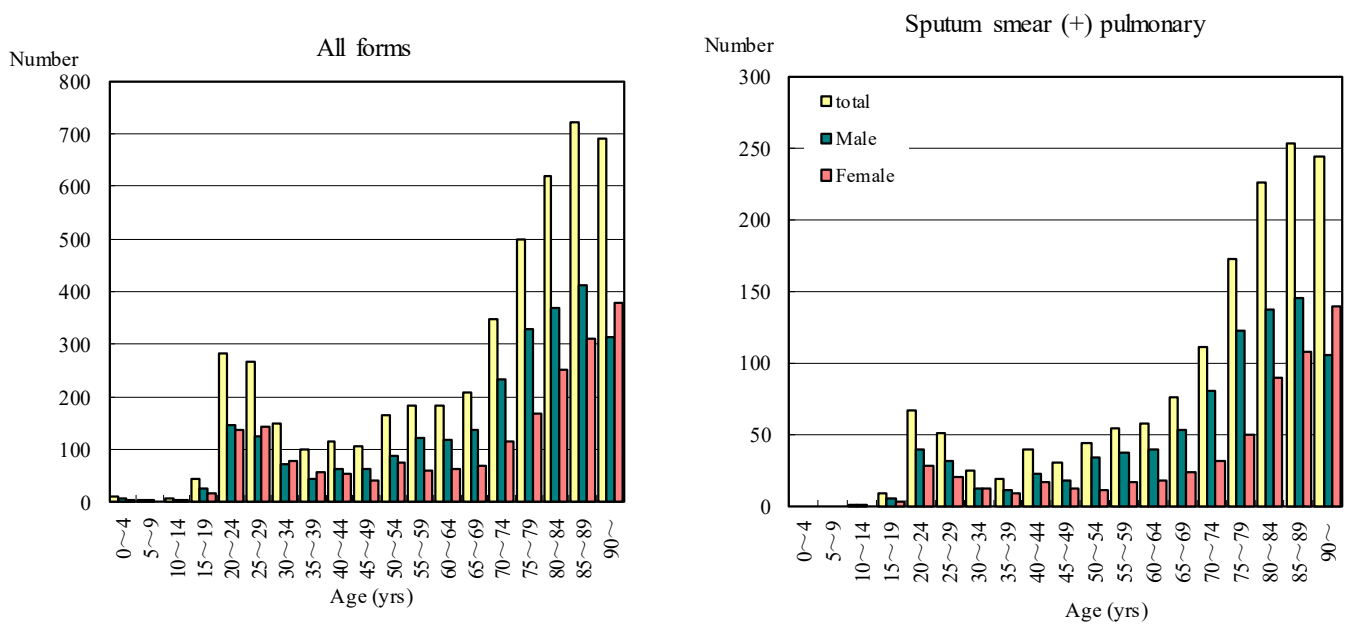


Figure 3. Notification rate of TB cases by sex and age, Japan, summation (Jan.-Jun.) 2024

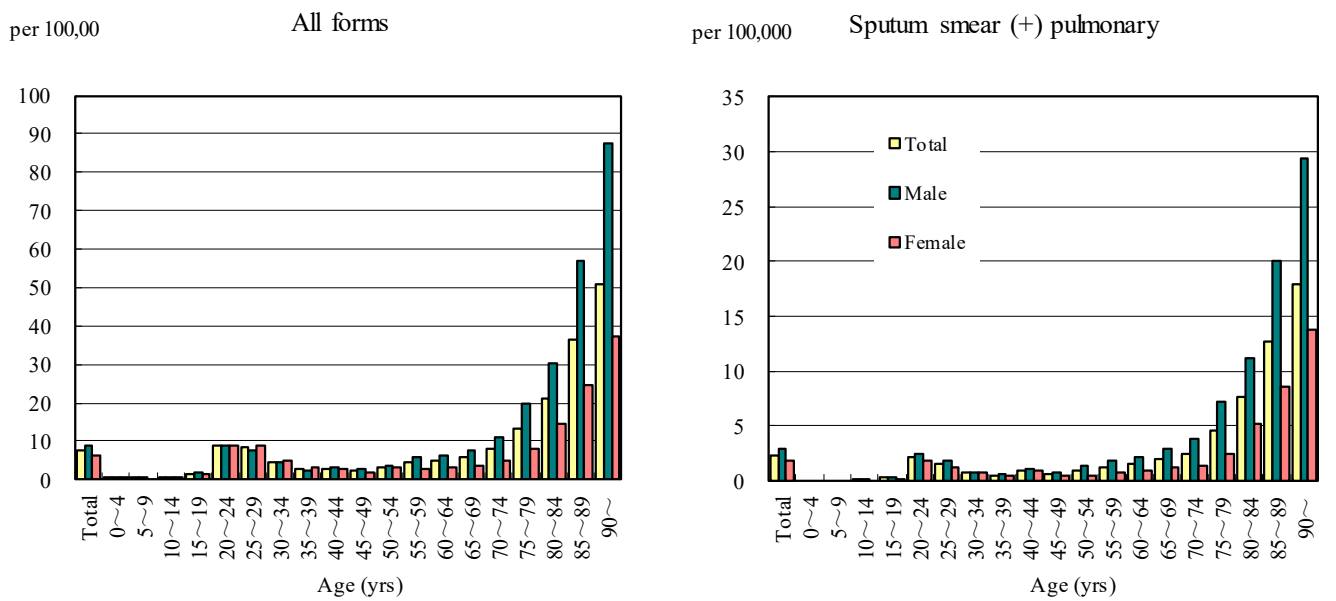


Figure 4. Notification rates of TB by prefecture, Japan, summation (Jan.-Jun.) 2024

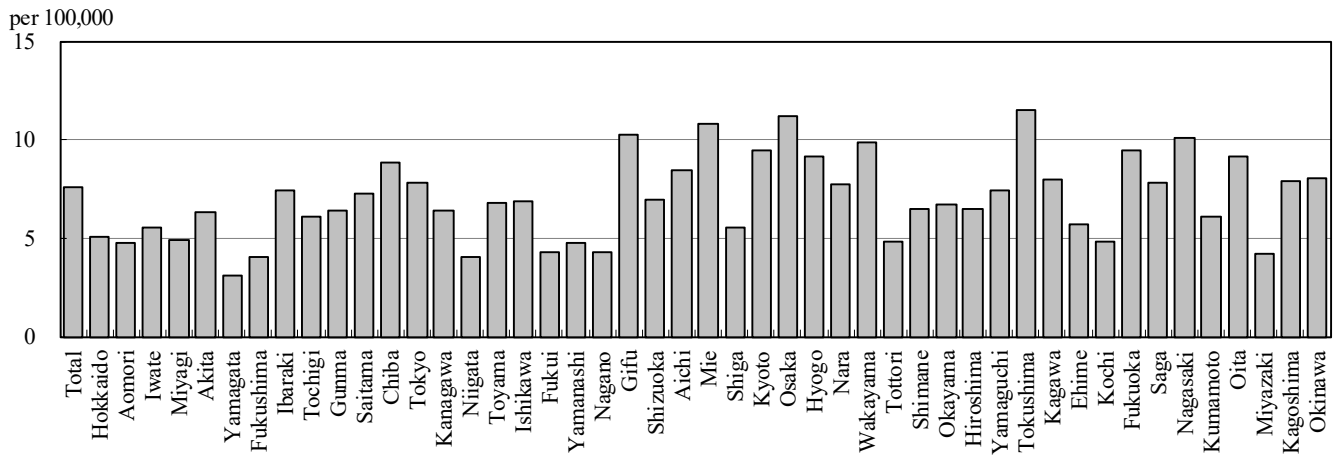


Figure 5. Notification rates of TB major city, Japan, summation (Jan.-Jun.) 2024

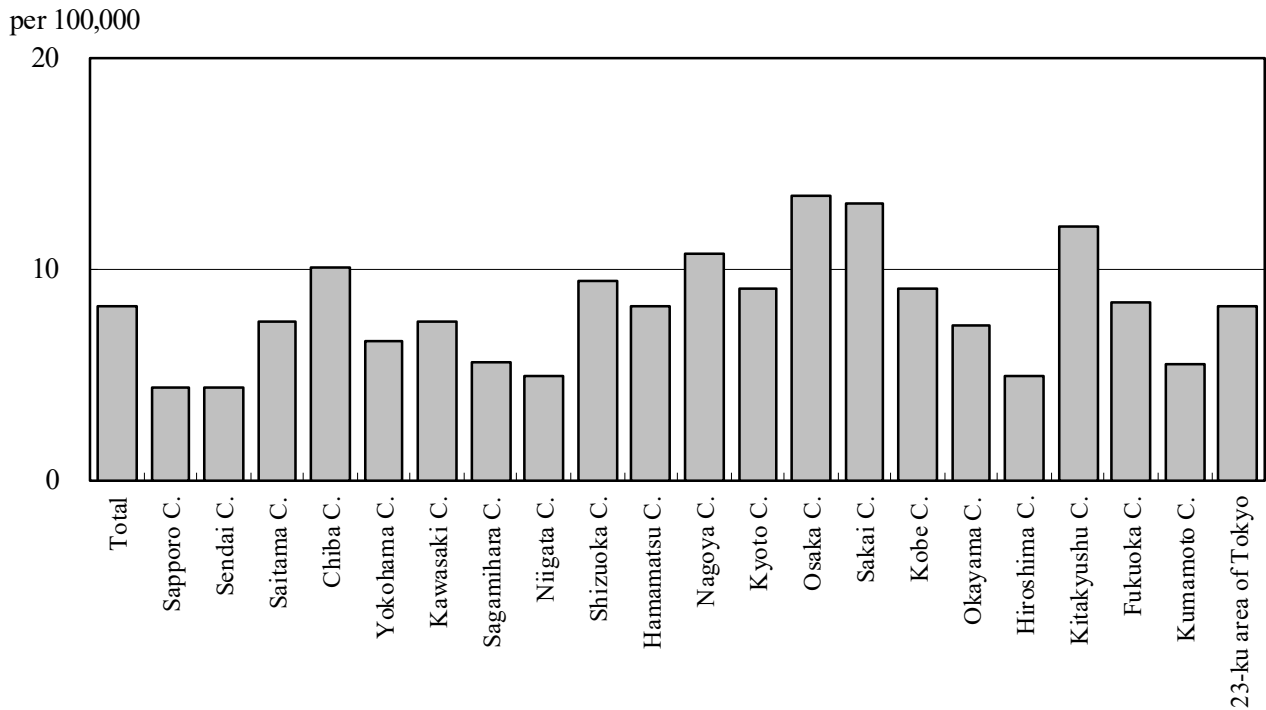


Figure 6. Number of LTBI, Japan, 2021-2024

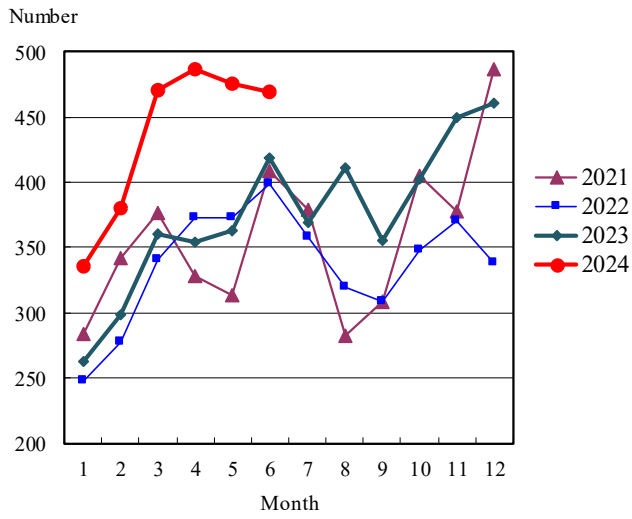


Figure 7. Number of LTBI by sex and age group, Japan, summation (Jan.-Jun.) 2024

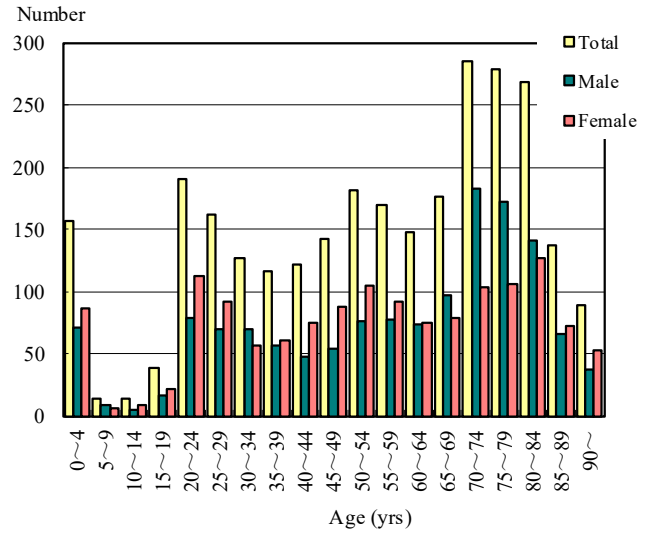


Table 1. Newly notified TB cases and rates by sex and age, Japan, 2024

	Jun.			Summation (Jan.-Jun.)			Notification rate (per 100,000)		
	Total	Male	Female	Total	Male	Female	Total	Male	Female
Total	745	446	299	4,699	2,680	2,019	7.6	8.9	6.3
0~4	2	1	1	10	7	3	0.5	0.7	0.3
5~9	2	2	0	4	4	0	0.2	0.3	0.0
10~14	1	0	1	6	3	3	0.2	0.2	0.2
15~19	12	7	5	43	26	17	1.6	1.8	1.3
20~24	51	35	16	283	146	137	9.1	9.1	9.1
25~29	39	19	20	268	126	142	8.3	7.6	9.0
30~34	22	9	13	150	71	79	4.7	4.3	5.1
35~39	15	8	7	100	44	56	2.8	2.4	3.2
40~44	19	13	6	115	62	53	3.0	3.1	2.8
45~49	18	9	9	105	64	41	2.3	2.8	1.8
50~54	26	14	12	164	89	75	3.4	3.7	3.1
55~59	32	27	5	183	123	60	4.4	5.9	2.9
60~64	41	22	19	183	120	63	4.9	6.5	3.3
65~69	20	12	8	208	138	70	5.7	7.7	3.7
70~74	38	23	15	346	232	114	7.8	11.2	4.9
75~79	89	58	31	498	330	168	13.3	19.6	8.2
80~84	98	68	30	621	370	251	21.1	30.1	14.6
85~89	104	66	38	721	412	309	36.2	56.9	24.4
90~	116	53	63	691	313	378	50.6	87.7	37.5

Temporary registrants = 50, Total of registrants and temporary registrants = 795

Rate: summation / (population\*6/12)\*100,000

Population: as of 1st Oct. 2023

Table 2. Newly notified sputum smear positive pulmonary TB cases and rates by sex and age, Japan, 2024

	Jun.			Summation (Jan.-Jun.)			Notification rate (per 100,000)		
	Total	Male	Female	Total	Male	Female	Total	Male	Female
Total	211	132	79	1,476	890	586	2.4	2.9	1.8
0~4	0	0	0	0	0	0	0.0	0.0	0.0
5~9	0	0	0	0	0	0	0.0	0.0	0.0
10~14	0	0	0	1	1	0	0.0	0.1	0.0
15~19	1	0	1	8	5	3	0.3	0.4	0.2
20~24	8	6	2	67	39	28	2.1	2.4	1.9
25~29	6	3	3	51	31	20	1.6	1.9	1.3
30~34	2	1	1	24	12	12	0.8	0.7	0.8
35~39	4	2	2	19	11	8	0.5	0.6	0.5
40~44	6	3	3	39	22	17	1.0	1.1	0.9
45~49	4	2	2	30	18	12	0.7	0.8	0.5
50~54	5	4	1	44	33	11	0.9	1.4	0.5
55~59	8	7	1	54	37	17	1.3	1.8	0.8
60~64	15	7	8	57	39	18	1.5	2.1	1.0
65~69	6	5	1	76	53	23	2.1	3.0	1.2
70~74	12	7	5	111	80	31	2.5	3.8	1.3
75~79	32	23	9	172	122	50	4.6	7.3	2.4
80~84	36	24	12	226	137	89	7.7	11.1	5.2
85~89	31	22	9	253	145	108	12.7	20.0	8.5
90~	35	16	19	244	105	139	17.9	29.4	13.8

Rate: summation / (population\*6/12)\*100,000

Population: as of 1st Oct. 2023

Table 3. Newly notified TB cases and rates by prefecture, Japan, 2024

	Jun.		Summation (Jan.-Jun.)		Notification rate (per 100,000)	
	Newly notified TB	Sputum smear (+)	Newly notified TB	Sputum smear (+)	Newly notified TB	Sputum smear (+)
Total	745	211	4,699	1,476	7.6	2.4
Hokkaido	19	3	129	32	5.1	1.3
Aomori	3	1	28	11	4.7	1.9
Iwate	3	1	32	10	5.5	1.7
Miyagi	4	2	56	18	4.9	1.6
Akita	2	0	29	7	6.3	1.5
Yamagata	2	0	16	2	3.1	0.4
Fukushima	5	2	36	18	4.1	2.0
Ibaraki	13	4	105	32	7.4	2.3
Tochigi	10	4	58	19	6.1	2.0
Gunma	6	2	61	19	6.4	2.0
Saitama	47	11	267	82	7.3	2.2
Chiba	40	9	277	91	8.9	2.9
Tokyo	93	29	552	166	7.8	2.4
Kanagawa	51	20	296	87	6.4	1.9
Niigata	6	1	43	13	4.0	1.2
Toyama	8	3	34	9	6.8	1.8
Ishikawa	6	2	38	9	6.9	1.6
Fukui	3	0	16	3	4.3	0.8
Yamanashi	3	1	19	6	4.8	1.5
Nagano	9	2	43	18	4.3	1.8
Gifu	20	5	99	22	10.3	2.3
Shizuoka	20	2	123	34	6.9	1.9
Aichi	48	10	317	91	8.5	2.4
Mie	18	7	93	35	10.8	4.1
Shiga	4	2	39	13	5.5	1.8
Kyoto	21	10	120	43	9.5	3.4
Osaka	75	25	490	186	11.2	4.2
Hyogo	34	12	245	79	9.1	2.9
Nara	8	3	50	14	7.7	2.2
Wakayama	9	3	44	18	9.9	4.0
Tottori	2	0	13	5	4.8	1.9
Shimane	2	1	21	5	6.5	1.5
Okayama	10	2	62	18	6.7	1.9
Hiroshima	12	0	89	16	6.5	1.2
Yamaguchi	7	1	48	12	7.4	1.8
Tokushima	8	6	40	15	11.5	4.3
Kagawa	13	1	37	7	8.0	1.5
Ehime	8	2	37	12	5.7	1.9
Kochi	2	1	16	6	4.8	1.8
Fukuoka	37	5	242	77	9.5	3.0
Saga	6	2	31	14	7.8	3.5
Nagasaki	11	3	64	19	10.1	3.0
Kumamoto	7	1	52	19	6.1	2.2
Oita	13	4	50	18	9.1	3.3
Miyazaki	5	2	22	9	4.2	1.7
Kagoshima	7	3	61	18	7.9	2.3
Okinawa	5	1	59	19	8.0	2.6

Rate: summation / (population\*6/12)\*100,000

Population: as of 1st Oct. 2023

Table 4. Newly notified TB cases and rates by major city, Japan, 2024

	Jun.		Summation (Jan.-Jun.)		Notification Rate (per 100,000)	
	Newly notified TB	Sputum Smear(+)	Newly notified TB	Sputum Smear(+)	Newly notified TB	Sputum Smear(+)
Total	223	63	1,548	496	8.3	2.6
Sapporo City	5	1	43	17	4.4	1.7
Sendai City	2	1	24	5	4.4	0.9
Saitama City	5	1	50	15	7.4	2.2
Chiba City	5	2	49	20	10.0	4.1
Yokohama City	22	6	123	32	6.5	1.7
Kawasaki City	9	7	58	22	7.5	2.8
Sagamihara City	4	0	20	8	5.5	2.2
Niigata City	1	0	19	6	4.9	1.6
Shizuoka City	5	2	32	12	9.4	3.5
Hamamatsu City	9	0	32	6	8.2	1.5
Nagoya City	15	4	124	44	10.7	3.8
Kyoto City	7	4	65	21	9.0	2.9
Osaka City	15	4	186	65	13.4	4.7
Sakai City	14	5	53	24	13.1	5.9
Kobe City	5	2	68	23	9.1	3.1
Okayama City	6	1	26	8	7.3	2.2
Hiroshima City	5	0	29	6	4.9	1.0
Kitakyushu City	10	3	55	18	12.0	3.9
Fukuoka City	8	2	69	26	8.4	3.2
Kumamoto City	1	0	20	6	5.4	1.6
23-ku area of Tokyo	70	18	403	112	8.2	2.3

Rate: summation / (population\*6/12)\*100,000

Population: as of 1st Oct. 2023

Major city: city with a population of one million or more.

Table 4 is a re-count of Table 3.

Table 5. LTBI cases and rates by sex and age, Japan, 2024

	Jun.			Summation (Jan.-Jun.)			(Ratio) LTBI/Newly notified cases		
	Total	Male	Female	Total	Male	Female	Total	Male	Female
Total	469	218	251	2,811	1,395	1,416	0.6	0.5	0.7
0~4	13	5	8	157	71	86	15.7	10.1	28.7
5~9	1	1	0	14	8	6	3.5	2.0	-
10~14	2	2	0	13	5	8	2.2	1.7	2.7
15~19	11	3	8	38	16	22	0.9	0.6	1.3
20~24	42	18	24	190	78	112	0.7	0.5	0.8
25~29	26	11	15	162	70	92	0.6	0.6	0.6
30~34	25	12	13	126	70	56	0.8	1.0	0.7
35~39	20	6	14	116	56	60	1.2	1.3	1.1
40~44	19	9	10	122	47	75	1.1	0.8	1.4
45~49	19	7	12	142	54	88	1.4	0.8	2.1
50~54	25	9	16	181	76	105	1.1	0.9	1.4
55~59	31	14	17	169	77	92	0.9	0.6	1.5
60~64	32	16	16	148	73	75	0.8	0.6	1.2
65~69	24	10	14	176	97	79	0.8	0.7	1.1
70~74	53	37	16	285	182	103	0.8	0.8	0.9
75~79	42	21	21	278	172	106	0.6	0.5	0.6
80~84	40	21	19	268	141	127	0.4	0.4	0.5
85~89	24	7	17	137	65	72	0.2	0.2	0.2
90~	20	9	11	89	37	52	0.1	0.1	0.1

LTBI: latent TB Infection

Number of LTBI is not included in the newly notified TB patients



Table 6. LTBI cases and rates by prefecture, Japan, 2024

	Jun.	Summation (Jan.-Jun.)	
	LTBI	LTBI	(Ratio) LTBI / new TB
Total	469	2,811	0.60
Hokkaido	24	120	0.93
Aomori	2	16	0.57
Iwate	2	22	0.69
Miyagi	7	47	0.84
Akita	0	10	0.34
Yamagata	2	13	0.81
Fukushima	1	13	0.36
Ibaraki	10	91	0.87
Tochigi	1	18	0.31
Gunma	3	36	0.59
Saitama	24	155	0.58
Chiba	31	189	0.68
Tokyo	71	341	0.62
Kanagawa	22	191	0.65
Niigata	2	31	0.72
Toyama	3	28	0.82
Ishikawa	1	22	0.58
Fukui	1	6	0.38
Yamanashi	0	9	0.47
Nagano	7	38	0.88
Gifu	10	55	0.56
Shizuoka	6	56	0.46
Aichi	29	139	0.44
Mie	10	28	0.30
Shiga	1	13	0.33
Kyoto	11	66	0.55
Osaka	38	268	0.55
Hyogo	27	134	0.55
Nara	4	25	0.50
Wakayama	4	27	0.61
Tottori	2	9	0.69
Shimane	1	13	0.62
Okayama	12	45	0.73
Hiroshima	9	75	0.84
Yamaguchi	4	22	0.46
Tokushima	4	13	0.33
Kagawa	3	19	0.51
Ehime	9	22	0.59
Kochi	0	3	0.19
Fukuoka	41	201	0.83
Saga	1	14	0.45
Nagasaki	5	22	0.34
Kumamoto	6	33	0.63
Oita	3	24	0.48
Miyazaki	0	9	0.41
Kagoshima	4	20	0.33
Okinawa	11	60	1.02

LTBI: Latent TB Infection

Number of LTBI is not included in the newly notified TB patients.

Table 7. LTBI cases and rates by major city, Japan, 2024

	Jun.	Summation (Jan.-Jun.)	
	LTBI	LTBI	(Ratio) LTBI / new TB
Total	165	1,015	0.66
Sapporo City	9	57	1.33
Sendai City	6	20	0.83
Saitama City	1	25	0.50
Chiba City	8	40	0.82
Yokohama City	11	88	0.72
Kawasaki City	4	38	0.66
Sagamihara City	0	15	0.75
Niigata City	1	21	1.11
Shizuoka City	2	10	0.31
Hamamatsu City	1	11	0.34
Nagoya City	9	43	0.35
Kyoto City	6	34	0.52
Osaka City	11	118	0.63
Sakai City	2	34	0.64
Kobe City	5	54	0.79
Okayama City	7	24	0.92
Hiroshima City	1	11	0.38
Kitakyushu City	12	50	0.91
Fukuoka City	6	52	0.75
Kumamoto City	3	12	0.60
23-ku area of Tokyo	60	258	0.64

LTBI: Latent TB Infection

Number of LTBI is not included in the newly notified TB patients,

Major city: city with a population of one million or more

Table 7 is a re-count of Table 6