



Monthly Report of Tuberculosis Surveillance, Japan - July, 2024

The reporting and recording of tuberculosis (TB) and Latent TB Infection (LTBI) are managed at public health centers (PHCs) by the nationwide computerized TB surveillance system in Japan. A monthly report is compiled from the database automatically and regularly on 4th Friday of the next month, and an annual report is also produced much like the monthly report, but with sufficient time for data correction.

Tables and figures shown in the monthly reports are as follows.

Figures

Figure 1. Number of newly notified TB cases by month, Japan, 2021-2024

Figure 2. Newly notified TB cases by sex and age, Japan, summation (Jan. -Jul.) 2024

Figure 3. Notification rate of TB cases by sex and age, Japan, summation (Jan. -Jul.) 2024

Figure 4. Notification rate of TB by prefecture, Japan, summation (Jan. -Jul.) 2024

Figure 5. Notification rate of TB by major city, Japan, summation (Jan. -Jul.) 2024

Figure 6. Number of LTBI, Japan, 2021-2024

Figure 7. Number of LTBI by sex and age group, Japan, summation (Jan. -Jul.) 2024

Tables

Table 1. Newly notified TB cases and rates by sex and age, Japan, 2024

Table 2. Newly notified sputum smear positive pulmonary TB cases and rates by sex and age, Japan, 2024

Table 3. Newly notified TB cases and rates by prefecture, Japan, 2024

Table 4. Newly notified TB cases and rates by major city, Japan, 2024

Table 5. LTBI cases and rates by sex and age, Japan, 2024

Table 6. LTBI cases and rates by prefecture, Japan, 2024

Table 7. LTBI cases and rates by major city, Japan, 2024

Figure 1. Number of newly notified TB cases by month, Japan, 2021-2024

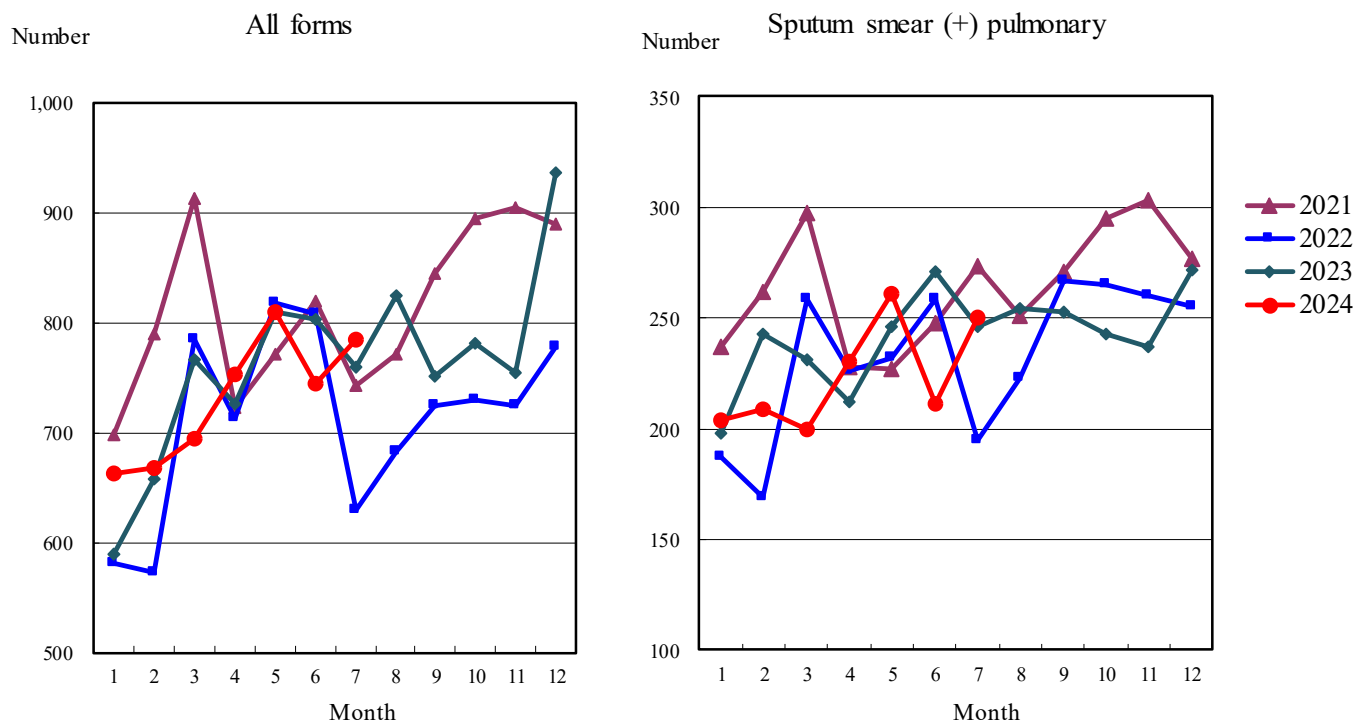


Figure 2. Newly notified TB patients by sex and age, Japan, summation (Jan.-Jul.) 2024

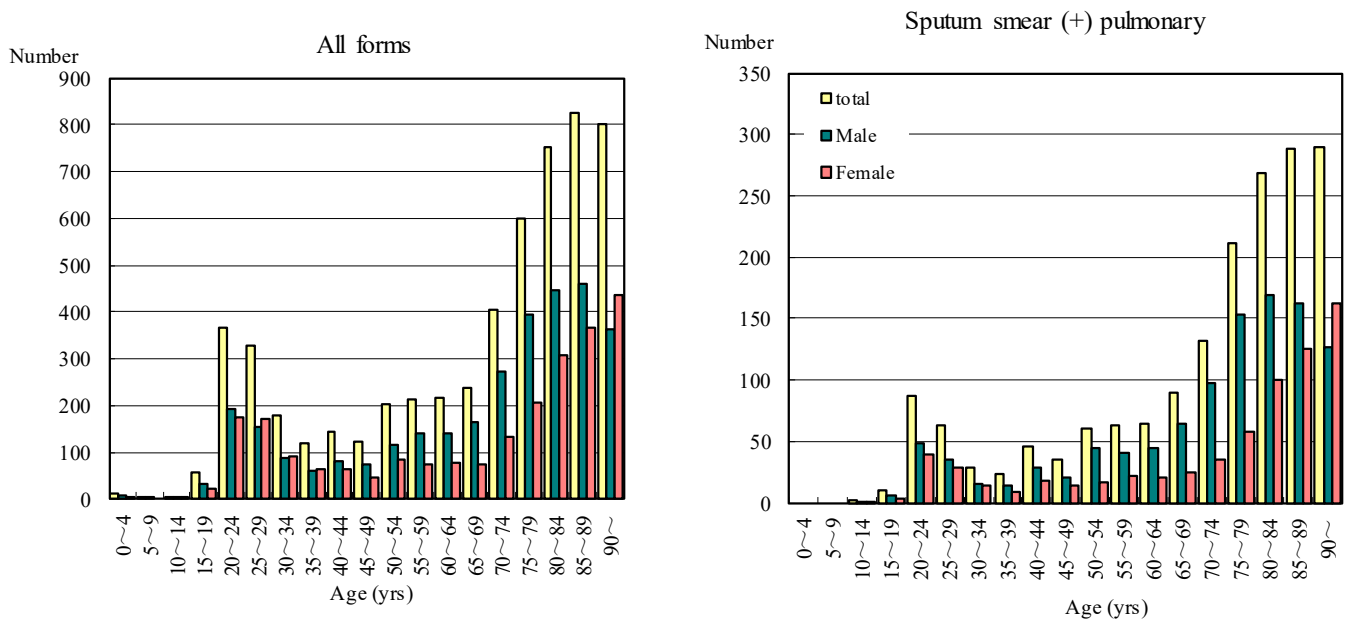


Figure 3. Notification rate of TB cases by sex and age, Japan, summation (Jan.-Jul.) 2024

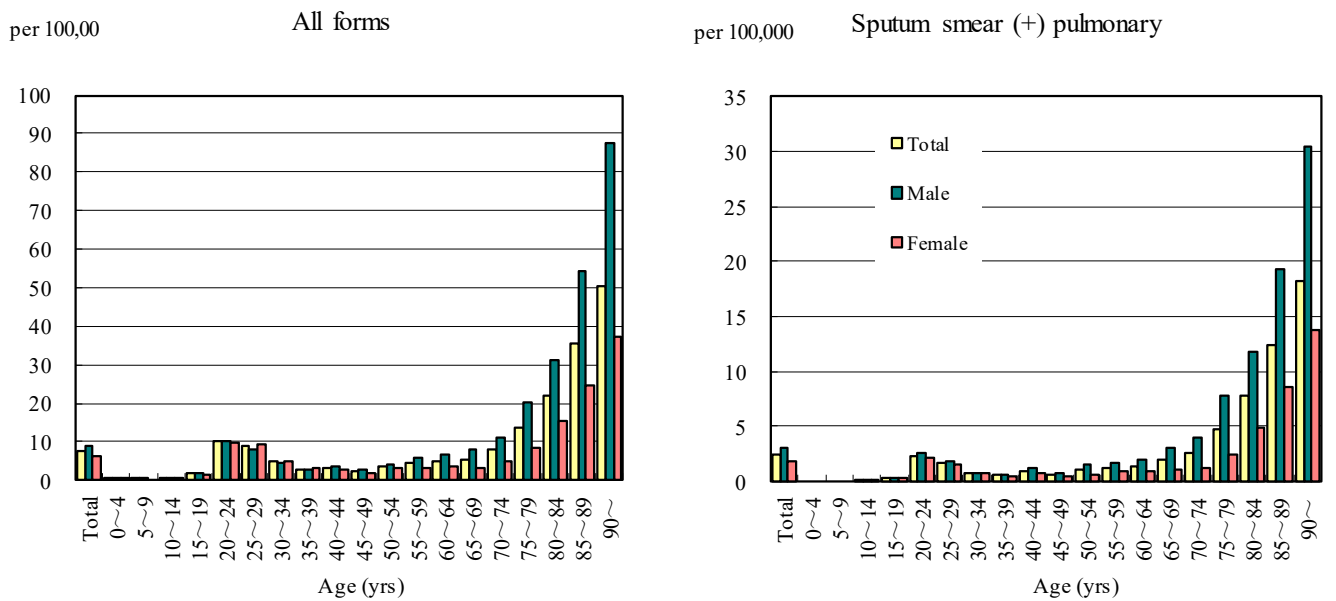


Figure 4. Notification rates of TB by prefecture, Japan, summation (Jan.-Jul.) 2024

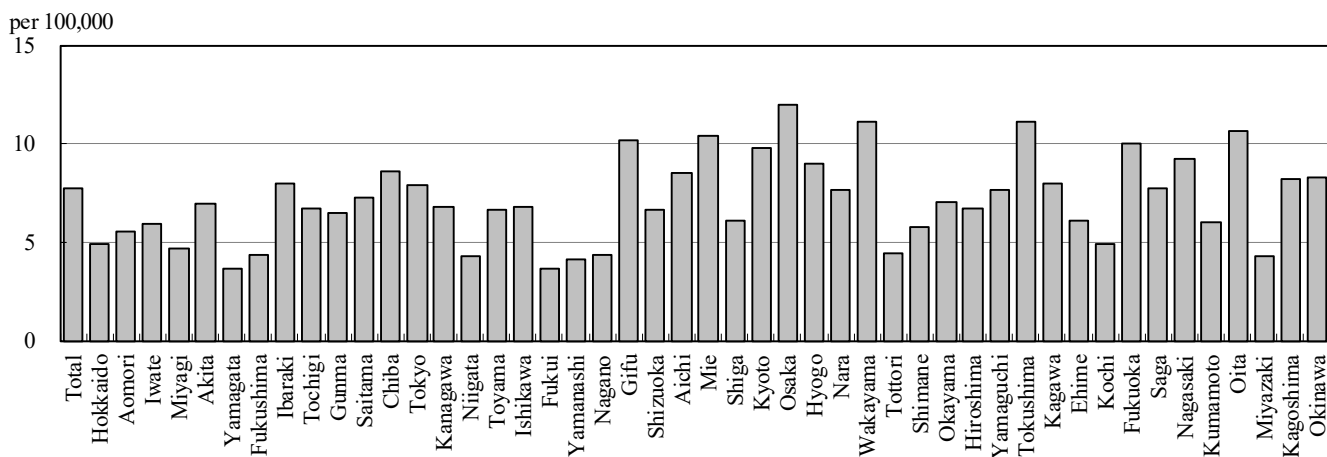


Figure 5. Notification rates of TB major city, Japan, summation (Jan.-Jul.) 2024

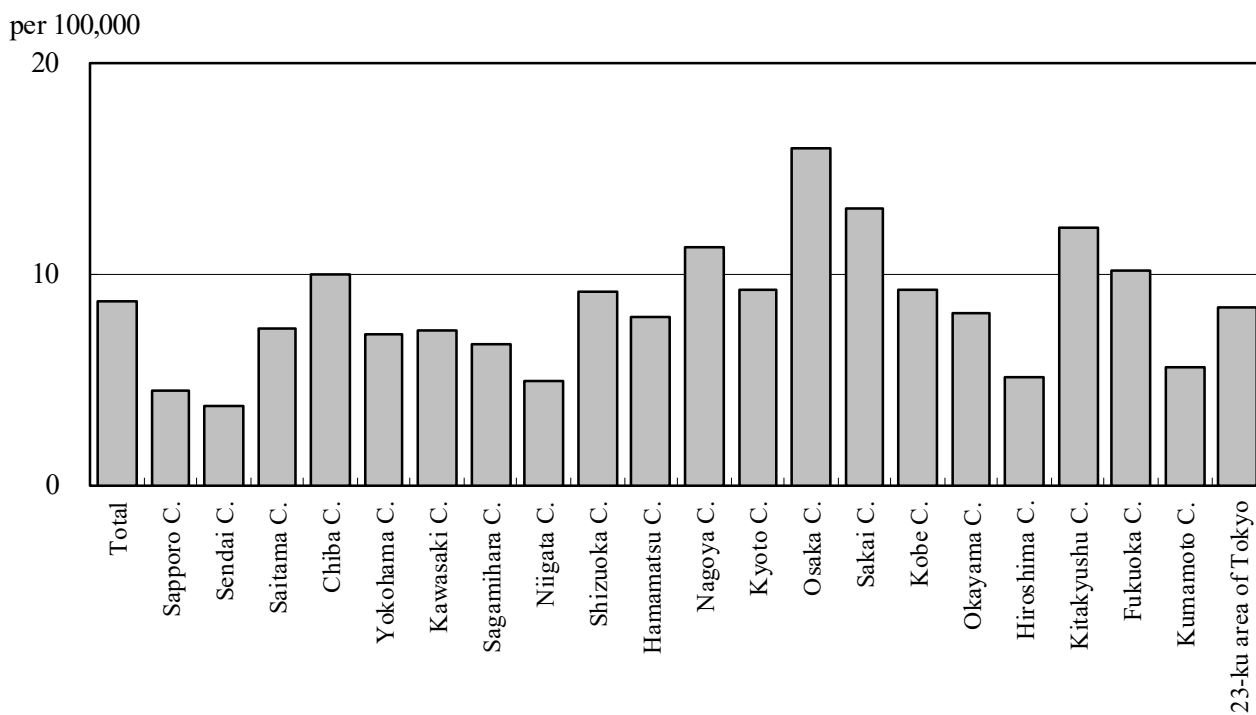


Figure 6. Number of LTBI, Japan, 2021-2024

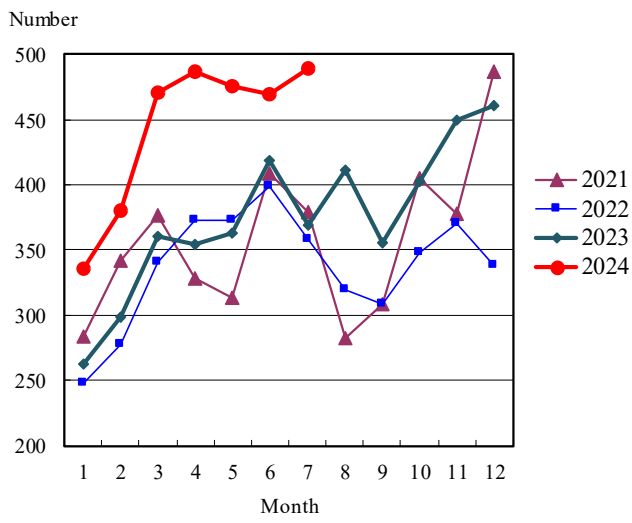


Figure 7. Number of LTBI by sex and age group, Japan, summation (Jan.-Jul.) 2024

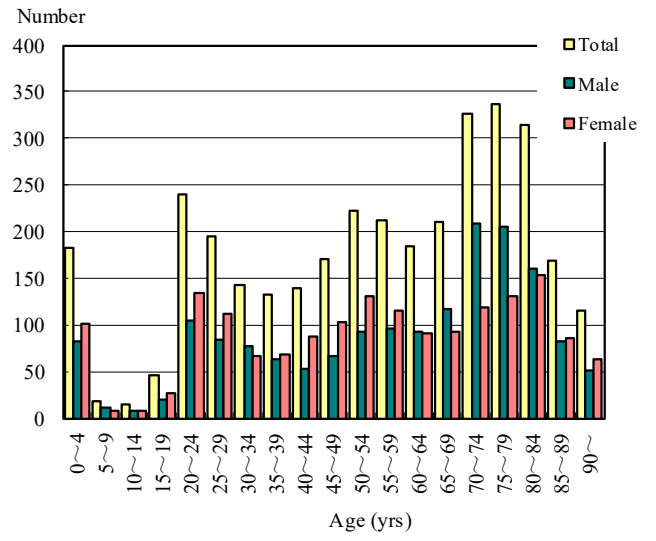


Table 1. Newly notified TB cases and rates by sex and age, Japan, 2024

	Jul.			Summation (Jan.-Jul.)			Notification rate (per 100,000)		
	Total	Male	Female	Total	Male	Female	Total	Male	Female
Total	784	463	321	5,592	3,197	2,395	7.7	9.1	6.4
0~4	1	0	1	11	7	4	0.5	0.6	0.3
5~9	0	0	0	4	4	0	0.1	0.3	0.0
10~14	0	0	0	6	3	3	0.2	0.2	0.2
15~19	11	6	5	55	33	22	1.7	2.0	1.4
20~24	77	43	34	368	194	174	10.1	10.4	9.9
25~29	56	27	29	328	155	173	8.7	8.0	9.4
30~34	27	16	11	180	88	92	4.8	4.6	5.1
35~39	18	14	4	121	59	62	2.9	2.8	3.1
40~44	26	17	9	145	80	65	3.2	3.5	2.9
45~49	15	10	5	122	75	47	2.3	2.8	1.8
50~54	29	22	7	202	117	85	3.6	4.1	3.0
55~59	26	16	10	212	139	73	4.4	5.8	3.0
60~64	31	21	10	217	141	76	5.0	6.5	3.4
65~69	31	27	4	239	166	73	5.6	8.0	3.3
70~74	47	34	13	404	272	132	7.9	11.2	4.9
75~79	87	53	34	600	394	206	13.8	20.1	8.6
80~84	116	67	49	753	446	307	21.9	31.1	15.3
85~89	91	43	48	825	460	365	35.5	54.5	24.7
90~	95	47	48	800	364	436	50.2	87.4	37.1

Temporary registrants = 62, Total of registrants and temporary registrants = 846

Rate: summation / (population*7/12)*100,000

Population: as of 1st Oct. 2023

Table 2. Newly notified sputum smear positive pulmonary TB cases and rates by sex and age, Japan, 2024

	Jul.			Summation (Jan.-Jul.)			Notification rate (per 100,000)		
	Total	Male	Female	Total	Male	Female	Total	Male	Female
Total	250	157	93	1,763	1,072	691	2.4	3.0	1.9
0~4	0	0	0	0	0	0	0.0	0.0	0.0
5~9	0	0	0	0	0	0	0.0	0.0	0.0
10~14	0	0	0	2	1	1	0.1	0.1	0.1
15~19	2	1	1	10	6	4	0.3	0.4	0.3
20~24	16	7	9	87	48	39	2.4	2.6	2.2
25~29	12	4	8	63	35	28	1.7	1.8	1.5
30~34	4	2	2	29	15	14	0.8	0.8	0.8
35~39	4	3	1	23	14	9	0.6	0.7	0.4
40~44	7	6	1	46	28	18	1.0	1.2	0.8
45~49	4	3	1	35	21	14	0.7	0.8	0.5
50~54	15	10	5	61	45	16	1.1	1.6	0.6
55~59	9	5	4	63	41	22	1.3	1.7	0.9
60~64	8	6	2	64	44	20	1.5	2.0	0.9
65~69	12	11	1	89	65	24	2.1	3.1	1.1
70~74	16	13	3	132	97	35	2.6	4.0	1.3
75~79	30	23	7	211	153	58	4.8	7.8	2.4
80~84	39	28	11	269	169	100	7.8	11.8	5.0
85~89	31	15	16	289	163	126	12.5	19.3	8.5
90~	41	20	21	290	127	163	18.2	30.5	13.9

Rate: summation / (population*7/12)*100,000

Population: as of 1st Oct. 2023

Table 3. Newly notified TB cases and rates by prefecture, Japan, 2024

	Jul.		Summation (Jan.-Jul.)		Notification rate (per 100,000)	
	Newly notified TB	Sputum smear (+)	Newly notified TB	Sputum smear (+)	Newly notified TB	Sputum smear (+)
Total	784	250	5,592	1,763	7.7	2.4
Hokkaido	16	5	145	37	4.9	1.2
Aomori	7	2	38	14	5.5	2.0
Iwate	7	0	40	10	5.9	1.5
Miyagi	7	1	62	19	4.7	1.4
Akita	8	4	37	11	6.9	2.1
Yamagata	5	2	22	4	3.7	0.7
Fukushima	7	2	45	20	4.4	1.9
Ibaraki	14	5	131	42	8.0	2.5
Tochigi	15	5	74	24	6.7	2.2
Gunma	10	4	72	23	6.5	2.1
Saitama	43	16	311	98	7.3	2.3
Chiba	35	12	313	104	8.6	2.8
Tokyo	100	31	651	198	7.9	2.4
Kanagawa	62	20	364	107	6.8	2.0
Niigata	8	1	53	15	4.3	1.2
Toyama	5	2	39	11	6.6	1.9
Ishikawa	6	1	44	10	6.8	1.5
Fukui	0	0	16	3	3.7	0.7
Yamanashi	1	0	19	6	4.1	1.3
Nagano	8	2	51	21	4.4	1.8
Gifu	16	5	115	28	10.2	2.5
Shizuoka	13	3	138	38	6.7	1.8
Aichi	49	20	370	114	8.5	2.6
Mie	12	3	105	38	10.4	3.8
Shiga	10	0	50	14	6.1	1.7
Kyoto	22	9	145	52	9.8	3.5
Osaka	84	27	612	225	12.0	4.4
Hyogo	37	16	282	96	9.0	3.1
Nara	8	2	58	17	7.7	2.2
Wakayama	13	5	58	24	11.1	4.6
Tottori	0	0	14	5	4.5	1.6
Shimane	1	1	22	6	5.8	1.6
Okayama	14	3	76	20	7.1	1.9
Hiroshima	16	3	107	19	6.7	1.2
Yamaguchi	9	1	58	14	7.7	1.8
Tokushima	5	0	45	15	11.1	3.7
Kagawa	6	1	43	8	8.0	1.5
Ehime	6	2	46	14	6.1	1.9
Kochi	2	2	19	8	4.9	2.1
Fukuoka	41	10	299	91	10.0	3.1
Saga	5	1	36	15	7.8	3.2
Nagasaki	4	1	68	20	9.2	2.7
Kumamoto	6	3	60	23	6.0	2.3
Oita	17	11	68	30	10.6	4.7
Miyazaki	4	0	26	9	4.3	1.5
Kagoshima	11	4	74	22	8.2	2.4
Okinawa	9	2	71	21	8.3	2.5

Rate: summation / (population*7/12)*100,000

Population: as of 1st Oct. 2023

Table 4. Newly notified TB cases and rates by major city, Japan, 2024

	Jul.		Summation (Jan.-Jul.)		Notification Rate (per 100,000)	
	Newly notified TB	Sputum Smear(+)	Newly notified TB	Sputum Smear(+)	Newly notified TB	Sputum Smear(+)
Total	287	92	1,898	605	8.7	2.8
Sapporo City	8	3	51	20	4.4	1.7
Sendai City	1	0	24	5	3.7	0.8
Saitama City	8	2	58	17	7.4	2.2
Chiba City	8	4	57	24	10.0	4.2
Yokohama City	29	11	156	42	7.1	1.9
Kawasaki City	8	2	66	24	7.3	2.7
Sagamihara City	8	2	28	10	6.6	2.4
Niigata City	3	1	22	7	4.9	1.6
Shizuoka City	2	0	36	13	9.1	3.3
Hamamatsu City	4	0	36	6	7.9	1.3
Nagoya City	27	13	153	58	11.3	4.3
Kyoto City	12	4	78	25	9.3	3.0
Osaka City	33	7	257	84	15.9	5.2
Sakai City	9	2	62	26	13.1	5.5
Kobe City	13	7	81	30	9.3	3.4
Okayama City	8	1	34	9	8.1	2.2
Hiroshima City	4	0	35	6	5.1	0.9
Kitakyushu City	11	3	65	21	12.2	3.9
Fukuoka City	11	4	97	34	10.1	3.5
Kumamoto City	4	2	24	8	5.6	1.9
23-ku area of Tokyo	76	24	478	136	8.4	2.4

Rate: summation / (population*7/12)*100,000

Population: as of 1st Oct. 2023

Major city: city with a population of one million or more.

Table 4 is a re-count of Table 3.

Table 5. LTBI cases and rates by sex and age, Japan, 2024

	Jul.			Summation (Jan.-Jul.)			(Ratio) LTBI/Newly notified cases		
	Total	Male	Female	Total	Male	Female	Total	Male	Female
Total	489	251	238	3,374	1,678	1,696	0.6	0.5	0.7
0~4	23	10	13	183	82	101	16.6	11.7	25.3
5~9	5	4	1	19	12	7	4.8	3.0	-
10~14	2	2	0	15	7	8	2.5	2.3	2.7
15~19	7	3	4	46	20	26	0.8	0.6	1.2
20~24	45	24	21	240	105	135	0.7	0.5	0.8
25~29	27	11	16	195	84	111	0.6	0.5	0.6
30~34	13	5	8	143	77	66	0.8	0.9	0.7
35~39	14	7	7	133	64	69	1.1	1.1	1.1
40~44	15	3	12	140	52	88	1.0	0.7	1.4
45~49	23	11	12	170	67	103	1.4	0.9	2.2
50~54	38	16	22	223	93	130	1.1	0.8	1.5
55~59	38	17	21	212	96	116	1.0	0.7	1.6
60~64	28	16	12	184	93	91	0.8	0.7	1.2
65~69	31	20	11	210	117	93	0.9	0.7	1.3
70~74	36	21	15	326	208	118	0.8	0.8	0.9
75~79	55	32	23	337	206	131	0.6	0.5	0.6
80~84	40	20	20	314	161	153	0.4	0.4	0.5
85~89	27	16	11	169	83	86	0.2	0.2	0.2
90~	22	13	9	115	51	64	0.1	0.1	0.1

LTBI: latent TB Infection

Number of LTBI is not included in the newly notified TB patients

Table 6. LTBI cases and rates by prefecture, Japan, 2024

	Jul.	Summation (Jan.-Jul.)	
	LTBI	LTBI	(Ratio) LTBI /new TB
Total	489	3,374	0.60
Hokkaido	17	140	0.97
Aomori	0	18	0.47
Iwate	9	31	0.78
Miyagi	6	54	0.87
Akita	1	11	0.30
Yamagata	1	14	0.64
Fukushima	5	18	0.40
Ibaraki	6	109	0.83
Tochigi	4	23	0.31
Gunma	3	39	0.54
Saitama	29	184	0.59
Chiba	38	230	0.73
Tokyo	61	404	0.62
Kanagawa	26	220	0.60
Niigata	3	35	0.66
Toyama	1	29	0.74
Ishikawa	1	23	0.52
Fukui	2	8	0.50
Yamanashi	1	10	0.53
Nagano	2	40	0.78
Gifu	3	57	0.50
Shizuoka	15	73	0.53
Aichi	28	168	0.45
Mie	6	35	0.33
Shiga	7	20	0.40
Kyoto	8	76	0.52
Osaka	64	352	0.58
Hyogo	22	157	0.56
Nara	7	32	0.55
Wakayama	3	30	0.52
Tottori	1	10	0.71
Shimane	4	17	0.77
Okayama	7	52	0.68
Hiroshima	9	84	0.79
Yamaguchi	3	25	0.43
Tokushima	4	17	0.38
Kagawa	8	27	0.63
Ehime	2	26	0.57
Kochi	0	3	0.16
Fukuoka	23	234	0.78
Saga	3	17	0.47
Nagasaki	6	28	0.41
Kumamoto	5	40	0.67
Oita	16	40	0.59
Miyazaki	4	13	0.50
Kagoshima	4	23	0.31
Okinawa	11	78	1.10

LTBI: Latent TB Infection

Number of LTBI is not included in the newly notified TB patients.

Table 7. LTBI cases and rates by major city, Japan, 2024

	Jul.	Summation (Jan.-Jul.)	
	LTBI	LTBI	(Ratio) LTBI / new TB
Total	184	1,234	0.65
Sapporo City	9	66	1.29
Sendai City	4	25	1.04
Saitama City	4	29	0.50
Chiba City	5	45	0.79
Yokohama City	12	100	0.64
Kawasaki City	9	47	0.71
Sagamihara City	3	18	0.64
Niigata City	0	21	0.95
Shizuoka City	4	17	0.47
Hamamatsu City	4	14	0.39
Nagoya City	17	61	0.40
Kyoto City	4	38	0.49
Osaka City	22	159	0.62
Sakai City	8	42	0.68
Kobe City	8	62	0.77
Okayama City	4	28	0.82
Hiroshima City	1	12	0.34
Kitakyushu City	4	54	0.83
Fukuoka City	3	64	0.66
Kumamoto City	2	14	0.58
23-ku area of Tokyo	57	318	0.67

LTBI: Latent TB Infection

Number of LTBI is not included in the newly notified TB patients,

Major city: city with a population of one million or more

Table 7 is a re-count of Table 6