



Monthly Report of Tuberculosis Surveillance, Japan - September, 2024

The reporting and recording of tuberculosis (TB) and Latent TB Infection (LTBI) are managed at public health centers (PHCs) by the nationwide computerized TB surveillance system in Japan. A monthly report is compiled from the database automatically and regularly on 4th Friday of the next month, and an annual report is also produced much like the monthly report, but with sufficient time for data correction.

Tables and figures shown in the monthly reports are as follows.

Figures

Figure 1. Number of newly notified TB cases by month, Japan, 2021-2024

Figure 2. Newly notified TB cases by sex and age, Japan, summation (Jan. -Sep.) 2024

Figure 3. Notification rate of TB cases by sex and age, Japan, summation (Jan. -Sep.) 2024

Figure 4. Notification rate of TB by prefecture, Japan, summation (Jan. -Sep.) 2024

Figure 5. Notification rate of TB by major city, Japan, summation (Jan. -Sep.) 2024

Figure 6. Number of LTBI, Japan, 2021-2024

Figure 7. Number of LTBI by sex and age group, Japan, summation (Jan. -Sep.) 2024

Tables

Table 1. Newly notified TB cases and rates by sex and age, Japan, 2024

Table 2. Newly notified sputum smear positive pulmonary TB cases and rates by sex and age, Japan, 2024

Table 3. Newly notified TB cases and rates by prefecture, Japan, 2024

Table 4. Newly notified TB cases and rates by major city, Japan, 2024

Table 5. LTBI cases and rates by sex and age, Japan, 2024

Table 6. LTBI cases and rates by prefecture, Japan, 2024

Table 7. LTBI cases and rates by major city, Japan, 2024

Figure 1. Number of newly notified TB cases by month, Japan, 2021-2024

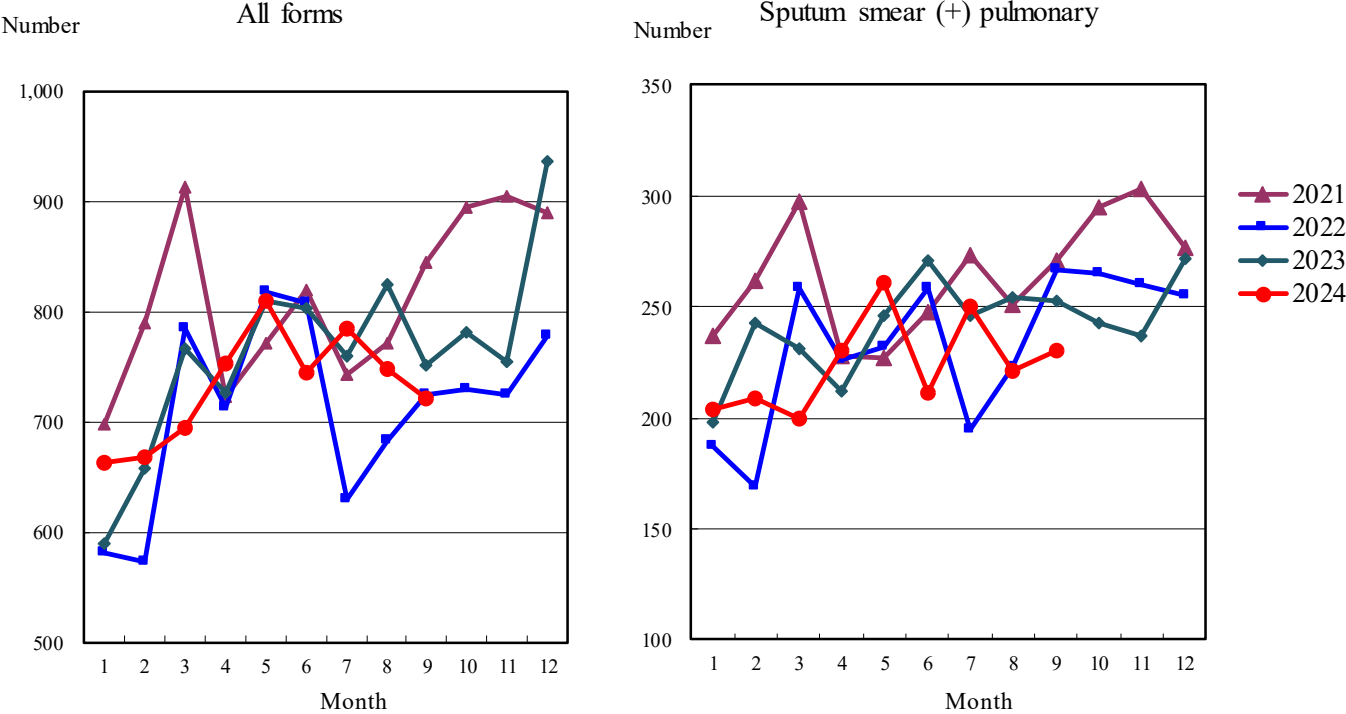


Figure 2. Newly notified TB patients by sex and age, Japan, summation (Jan.-Sep.) 2024

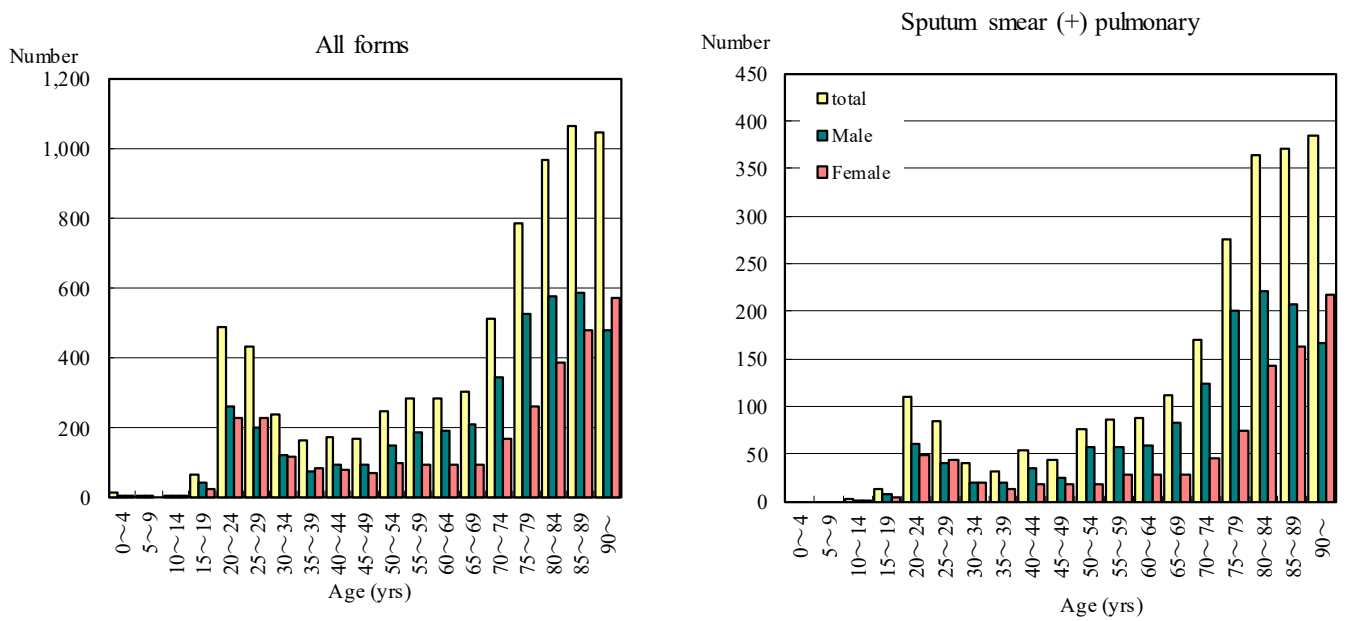


Figure 3. Notification rate of TB cases by sex and age, Japan, summation (Jan.-Sep.) 2024

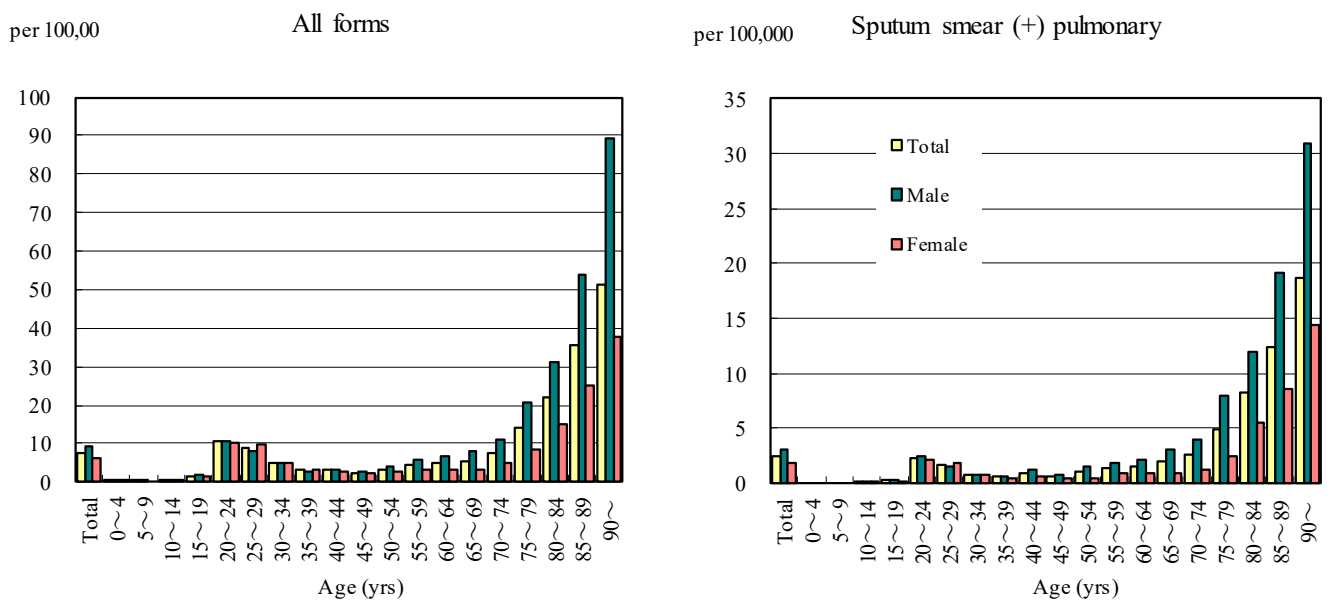


Figure 4. Notification rates of TB by prefecture, Japan, summation (Jan.-Sep.) 2024

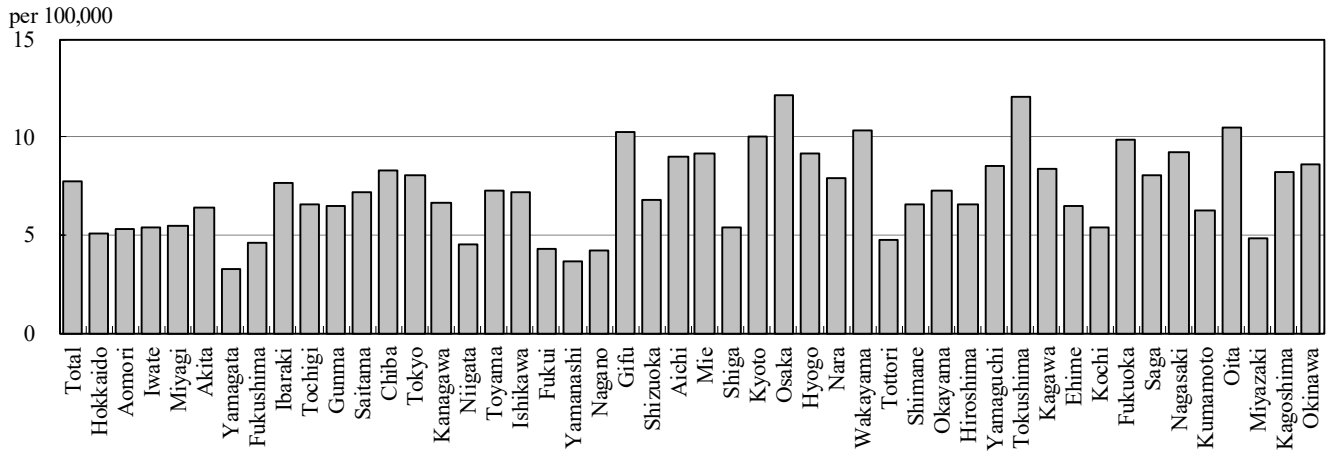


Figure 5. Notification rates of TB major city, Japan, summation (Jan.-Sep.) 2024

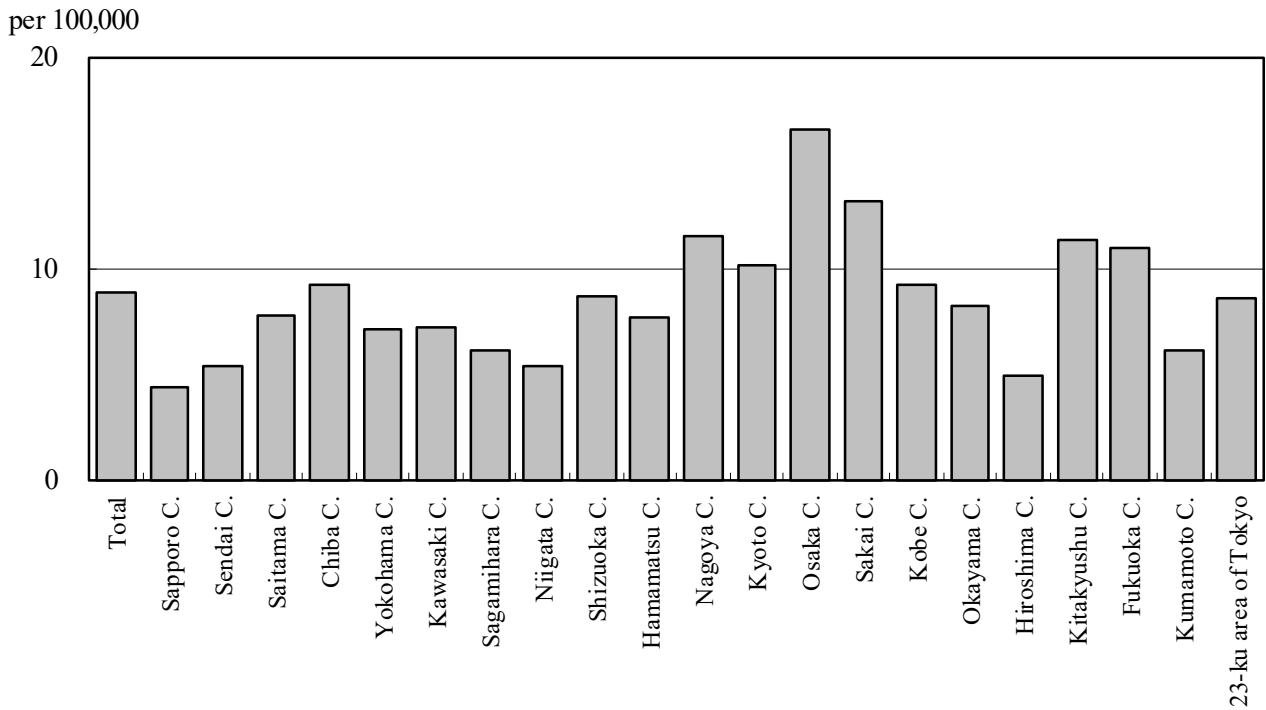


Figure 6. Number of LTBI, Japan, 2021-2024

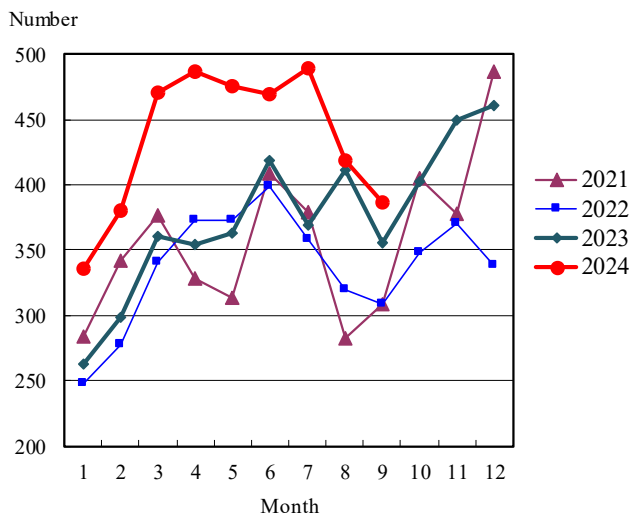


Figure 7. Number of LTBI by sex and age group, Japan, summation (Jan.-Sep.) 2024

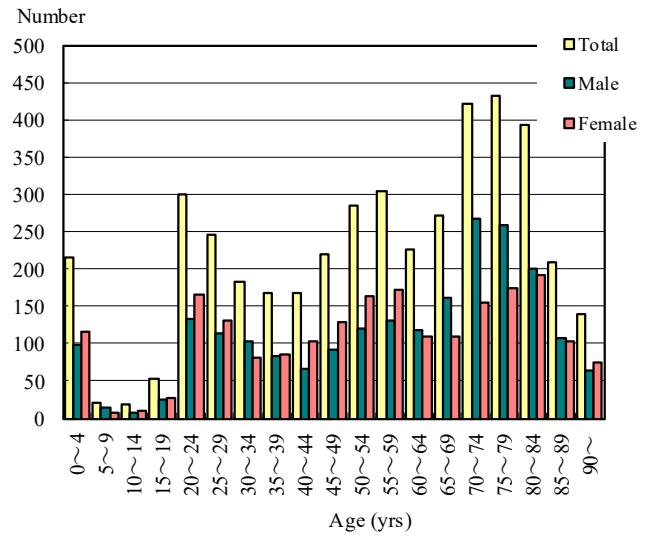


Table 1. Newly notified TB cases and rates by sex and age, Japan, 2024

	Sep.			Summation (Jan.-Sep.)			Notification rate (per 100,000)		
	Total	Male	Female	Total	Male	Female	Total	Male	Female
Total	721	424	297	7,250	4,155	3,095	7.8	9.2	6.5
0~4	1	0	1	14	7	7	0.5	0.4	0.5
5~9	0	0	0	4	4	0	0.1	0.2	0.0
10~14	0	0	0	6	3	3	0.2	0.1	0.2
15~19	5	3	2	68	43	25	1.7	2.0	1.2
20~24	53	34	19	488	260	228	10.4	10.8	10.1
25~29	41	16	25	433	203	230	8.9	8.1	9.7
30~34	31	20	11	239	121	118	5.0	4.9	5.1
35~39	22	9	13	162	77	85	3.1	2.9	3.3
40~44	8	4	4	175	96	79	3.0	3.3	2.8
45~49	11	6	5	168	96	72	2.5	2.8	2.1
50~54	20	16	4	246	149	97	3.4	4.1	2.7
55~59	28	20	8	283	187	96	4.6	6.0	3.1
60~64	32	23	9	284	190	94	5.0	6.8	3.3
65~69	29	17	12	304	209	95	5.5	7.8	3.4
70~74	54	37	17	514	346	168	7.8	11.1	4.8
75~79	85	61	24	787	524	263	14.0	20.8	8.5
80~84	98	58	40	966	578	388	21.8	31.4	15.1
85~89	97	50	47	1,062	585	477	35.6	53.9	25.1
90~	106	50	56	1,047	477	570	51.1	89.1	37.7

Temporary registrants = 51, Total of registrants and temporary registrants = 772

Rate: summation / (population*9/12)*100,000

Population: as of 1st Oct. 2023

Table 2. Newly notified sputum smear positive pulmonary TB cases and rates by sex and age, Japan, 2024

	Sep.			Summation (Jan.-Sep.)			Notification rate (per 100,000)		
	Total	Male	Female	Total	Male	Female	Total	Male	Female
Total	230	141	89	2,302	1,386	916	2.5	3.1	1.9
0~4	0	0	0	0	0	0	0.0	0.0	0.0
5~9	0	0	0	0	0	0	0.0	0.0	0.0
10~14	0	0	0	2	1	1	0.1	0.0	0.1
15~19	1	1	0	13	8	5	0.3	0.4	0.2
20~24	11	7	4	110	61	49	2.4	2.5	2.2
25~29	10	3	7	84	40	44	1.7	1.6	1.9
30~34	5	3	2	40	20	20	0.8	0.8	0.9
35~39	3	2	1	32	19	13	0.6	0.7	0.5
40~44	2	2	0	53	35	18	0.9	1.2	0.6
45~49	2	1	1	43	25	18	0.6	0.7	0.5
50~54	5	5	0	76	58	18	1.1	1.6	0.5
55~59	9	8	1	86	57	29	1.4	1.8	0.9
60~64	10	6	4	87	59	28	1.5	2.1	1.0
65~69	11	8	3	111	83	28	2.0	3.1	1.0
70~74	22	15	7	170	124	46	2.6	4.0	1.3
75~79	28	22	6	276	201	75	4.9	8.0	2.4
80~84	42	23	19	364	221	143	8.2	12.0	5.5
85~89	30	19	11	371	208	163	12.4	19.2	8.6
90~	39	16	23	384	166	218	18.8	31.0	14.4

Rate: summation / (population*9/12)*100,000

Population: as of 1st Oct. 2023

Table 3. Newly notified TB cases and rates by prefecture, Japan, 2024

	Sep.		Summation (Jan.-Sep.)		Notification rate (per 100,000)	
	Newly notified TB	Sputum smear (+)	Newly notified TB	Sputum smear (+)	Newly notified TB	Sputum smear (+)
Total	721	230	7,250	2,302	7.8	2.5
Hokkaido	17	7	192	53	5.0	1.4
Aomori	4	3	47	19	5.3	2.1
Iwate	2	1	47	16	5.4	1.8
Miyagi	16	4	93	30	5.5	1.8
Akita	5	0	44	11	6.4	1.6
Yamagata	1	0	25	5	3.2	0.6
Fukushima	5	3	61	29	4.6	2.2
Ibaraki	12	3	163	50	7.7	2.4
Tochigi	8	2	93	31	6.5	2.2
Gunma	9	4	92	31	6.5	2.2
Saitama	42	15	397	124	7.2	2.3
Chiba	30	11	388	132	8.3	2.8
Tokyo	100	35	852	267	8.1	2.5
Kanagawa	48	17	460	142	6.6	2.1
Niigata	7	2	72	20	4.5	1.3
Toyama	5	3	55	18	7.3	2.4
Ishikawa	9	2	60	13	7.2	1.6
Fukui	4	2	24	5	4.3	0.9
Yamanashi	2	0	22	7	3.7	1.2
Nagano	7	4	63	28	4.2	1.9
Gifu	15	4	149	38	10.3	2.6
Shizuoka	17	3	181	43	6.8	1.6
Aichi	61	16	503	155	9.0	2.8
Mie	8	1	119	41	9.2	3.2
Shiga	2	1	57	16	5.4	1.5
Kyoto	15	4	191	66	10.0	3.5
Osaka	67	20	796	290	12.1	4.4
Hyogo	39	18	369	131	9.2	3.3
Nara	6	1	77	25	7.9	2.6
Wakayama	7	5	69	28	10.3	4.2
Tottori	1	0	19	5	4.7	1.2
Shimane	1	0	32	10	6.6	2.1
Okayama	10	3	101	27	7.3	1.9
Hiroshima	8	1	135	26	6.6	1.3
Yamaguchi	16	3	83	20	8.5	2.1
Tokushima	14	3	63	18	12.1	3.5
Kagawa	8	1	58	10	8.4	1.4
Ehime	4	1	63	17	6.5	1.8
Kochi	2	0	27	11	5.4	2.2
Fukuoka	44	14	378	112	9.9	2.9
Saga	4	1	48	20	8.1	3.4
Nagasaki	8	2	88	22	9.3	2.3
Kumamoto	6	2	80	31	6.2	2.4
Oita	7	2	86	37	10.5	4.5
Miyazaki	3	1	38	16	4.9	2.0
Kagoshima	6	2	95	26	8.2	2.2
Okinawa	9	3	95	30	8.6	2.7

Rate: summation / (population*9/12)*100,000

Population: as of 1st Oct. 2023

Table 4. Newly notified TB cases and rates by major city, Japan, 2024

	Sep.		Summation (Jan.-Sep.)		Notification Rate (per 100,000)	
	Newly notified TB	Sputum Smear(+)	Newly notified TB	Sputum Smear(+)	Newly notified TB	Sputum Smear(+)
Total	272	94	2,495	799	8.9	2.8
Sapporo City	4	2	65	23	4.4	1.6
Sendai City	10	2	44	11	5.3	1.3
Saitama City	12	2	78	21	7.7	2.1
Chiba City	5	2	68	27	9.3	3.7
Yokohama City	21	7	202	57	7.1	2.0
Kawasaki City	11	4	83	30	7.2	2.6
Sagamihara City	4	2	33	12	6.1	2.2
Niigata City	2	2	31	11	5.4	1.9
Shizuoka City	3	2	44	16	8.7	3.1
Hamamatsu City	4	0	45	6	7.7	1.0
Nagoya City	28	8	201	69	11.5	4.0
Kyoto City	10	4	110	36	10.2	3.3
Osaka City	23	6	345	114	16.6	5.5
Sakai City	8	4	80	33	13.1	5.4
Kobe City	14	7	104	41	9.2	3.6
Okayama City	3	1	44	13	8.2	2.4
Hiroshima City	1	0	44	7	4.9	0.8
Kitakyushu City	8	2	78	23	11.4	3.3
Fukuoka City	21	8	135	47	11.0	3.8
Kumamoto City	3	2	34	13	6.1	2.3
23-ku area of Tokyo	77	27	627	189	8.5	2.6

Rate: summation / (population*9/12)*100,000

Population: as of 1st Oct. 2023

Major city: city with a population of one million or more.

Table 4 is a re-count of Table 3.

Table 5. LTBI cases and rates by sex and age, Japan, 2024

	Sep.			Summation (Jan.-Sep.)			(Ratio) LTBI/Newly notified cases		
	Total	Male	Female	Total	Male	Female	Total	Male	Female
Total	387	205	182	4,271	2,162	2,109	0.6	0.5	0.7
0~4	15	8	7	215	99	116	15.4	14.1	16.6
5~9	0	0	0	21	13	8	5.3	3.3	-
10~14	2	0	2	18	8	10	3.0	2.7	3.3
15~19	6	4	2	53	25	28	0.8	0.6	1.1
20~24	36	18	18	299	134	165	0.6	0.5	0.7
25~29	29	15	14	245	114	131	0.6	0.6	0.6
30~34	13	9	4	183	102	81	0.8	0.8	0.7
35~39	14	9	5	168	83	85	1.0	1.1	1.0
40~44	9	3	6	168	65	103	1.0	0.7	1.3
45~49	19	8	11	220	92	128	1.3	1.0	1.8
50~54	25	11	14	285	121	164	1.2	0.8	1.7
55~59	36	16	20	304	131	173	1.1	0.7	1.8
60~64	16	8	8	227	117	110	0.8	0.6	1.2
65~69	30	23	7	271	161	110	0.9	0.8	1.2
70~74	41	23	18	422	268	154	0.8	0.8	0.9
75~79	39	18	21	432	258	174	0.5	0.5	0.7
80~84	32	18	14	392	200	192	0.4	0.3	0.5
85~89	20	12	8	209	107	102	0.2	0.2	0.2
90~	5	2	3	139	64	75	0.1	0.1	0.1

LTBI: latent TB Infection

Number of LTBI is not included in the newly notified TB patients

Table 6. LTBI cases and rates by prefecture, Japan, 2024

	Sep.	Summation (Jan.-Sep.)	
	LTBI	LTBI	(Ratio) LTBI / new TB
Total	387	4,271	0.59
Hokkaido	13	174	0.91
Aomori	0	20	0.43
Iwate	4	38	0.81
Miyagi	5	68	0.73
Akita	1	12	0.27
Yamagata	3	18	0.72
Fukushima	3	22	0.36
Ibaraki	4	133	0.82
Tochigi	4	29	0.31
Gunma	3	48	0.52
Saitama	34	250	0.63
Chiba	22	279	0.72
Tokyo	64	521	0.61
Kanagawa	26	282	0.61
Niigata	3	46	0.64
Toyama	1	34	0.62
Ishikawa	2	31	0.52
Fukui	4	12	0.50
Yamanashi	0	12	0.55
Nagano	5	47	0.75
Gifu	7	76	0.51
Shizuoka	4	89	0.49
Aichi	15	211	0.42
Mie	6	47	0.39
Shiga	1	22	0.39
Kyoto	10	100	0.52
Osaka	51	471	0.59
Hyogo	16	194	0.53
Nara	3	45	0.58
Wakayama	4	39	0.57
Tottori	0	10	0.53
Shimane	1	21	0.66
Okayama	11	71	0.70
Hiroshima	5	95	0.70
Yamaguchi	1	32	0.39
Tokushima	1	20	0.32
Kagawa	4	35	0.60
Ehime	6	40	0.63
Kochi	0	4	0.15
Fukuoka	16	280	0.74
Saga	1	18	0.38
Nagasaki	5	41	0.47
Kumamoto	2	44	0.55
Oita	3	45	0.52
Miyazaki	2	16	0.42
Kagoshima	3	32	0.34
Okinawa	8	97	1.02

LTBI: Latent TB Infection

Number of LTBI is not included in the newly notified TB patients.

Table 7. LTBI cases and rates by major city, Japan, 2024

	Sep.	Summation (Jan.-Sep.)	
	LTBI	LTBI	(Ratio) LTBI / new TB
Total	164	1,575	0.63
Sapporo City	8	82	1.26
Sendai City	3	34	0.77
Saitama City	1	34	0.44
Chiba City	5	54	0.79
Yokohama City	13	121	0.60
Kawasaki City	6	62	0.75
Sagamihara City	3	21	0.64
Niigata City	1	25	0.81
Shizuoka City	1	21	0.48
Hamamatsu City	1	18	0.40
Nagoya City	8	74	0.37
Kyoto City	8	53	0.48
Osaka City	28	222	0.64
Sakai City	2	54	0.68
Kobe City	6	76	0.73
Okayama City	2	32	0.73
Hiroshima City	1	14	0.32
Kitakyushu City	11	70	0.90
Fukuoka City	2	75	0.56
Kumamoto City	0	15	0.44
23-ku area of Tokyo	54	418	0.67

LTBI: Latent TB Infection

Number of LTBI is not included in the newly notified TB patients,

Major city: city with a population of one million or more

Table 7 is a re-count of Table 6