



## Monthly Report of Tuberculosis Surveillance, Japan - October, 2024

The reporting and recording of tuberculosis (TB) and Latent TB Infection (LTBI) are managed at public health centers (PHCs) by the nationwide computerized TB surveillance system in Japan. A monthly report is compiled from the database automatically and regularly on 4<sup>th</sup> Friday of the next month, and an annual report is also produced much like the monthly report, but with sufficient time for data correction.

Tables and figures shown in the monthly reports are as follows.

### Figures

Figure 1. Number of newly notified TB cases by month, Japan, 2021-2024

Figure 2. Newly notified TB cases by sex and age, Japan, summation (Jan. -Oct.) 2024

Figure 3. Notification rate of TB cases by sex and age, Japan, summation (Jan. -Oct.) 2024

Figure 4. Notification rate of TB by prefecture, Japan, summation (Jan. -Oct.) 2024

Figure 5. Notification rate of TB by major city, Japan, summation (Jan. -Oct.) 2024

Figure 6. Number of LTBI, Japan, 2021-2024

Figure 7. Number of LTBI by sex and age group, Japan, summation (Jan. -Oct.) 2024

### Tables

Table 1. Newly notified TB cases and rates by sex and age, Japan, 2024

Table 2. Newly notified sputum smear positive pulmonary TB cases and rates by sex and age, Japan, 2024

Table 3. Newly notified TB cases and rates by prefecture, Japan, 2024

Table 4. Newly notified TB cases and rates by major city, Japan, 2024

Table 5. LTBI cases and rates by sex and age, Japan, 2024

Table 6. LTBI cases and rates by prefecture, Japan, 2024

Table 7. LTBI cases and rates by major city, Japan, 2024

Figure 1. Number of newly notified TB cases by month, Japan, 2021-2024

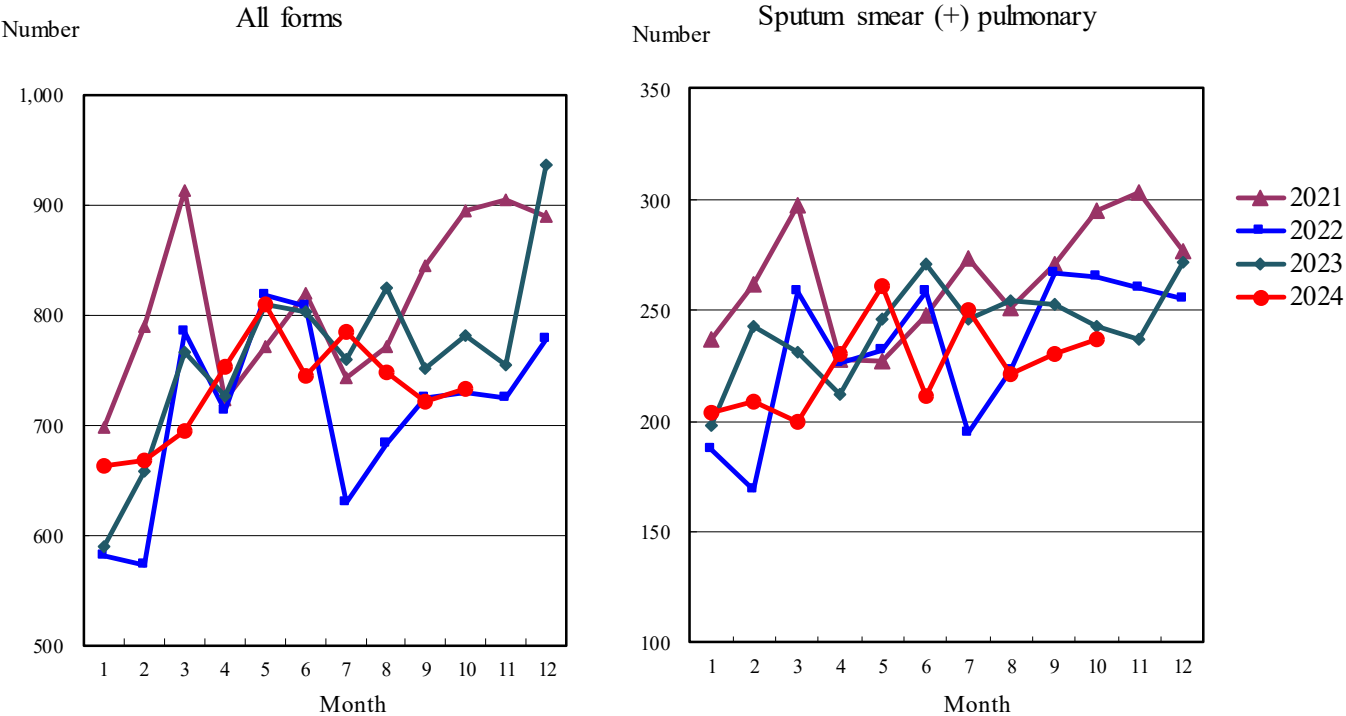


Figure 2. Newly notified TB patients by sex and age, Japan, summation (Jan.-Oct.) 2024

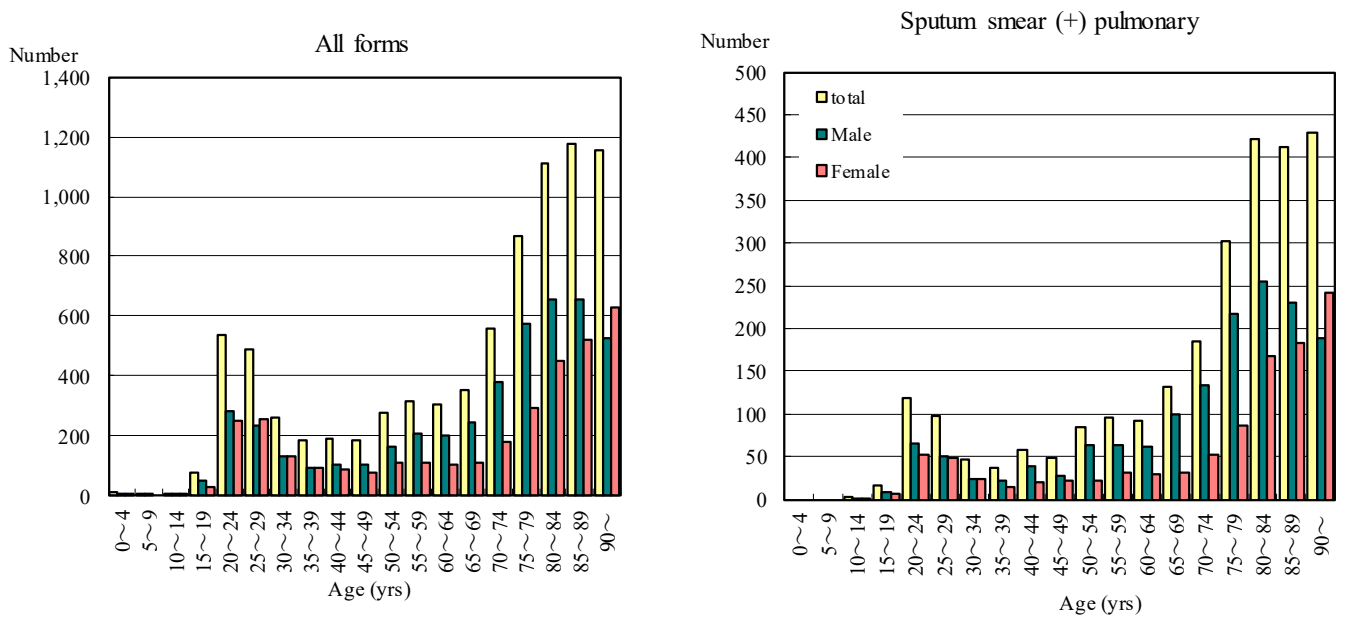


Figure 3. Notification rate of TB cases by sex and age, Japan, summation (Jan.-Oct.) 2024

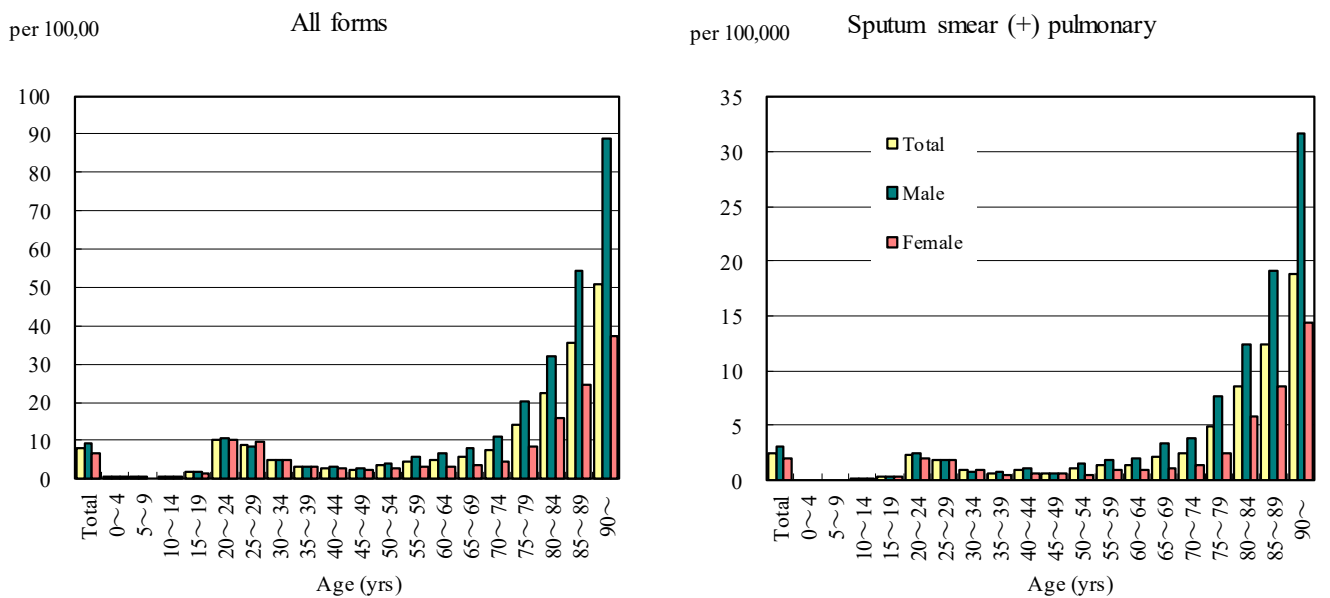


Figure 4. Notification rates of TB by prefecture, Japan, summation (Jan.-Oct.) 2024

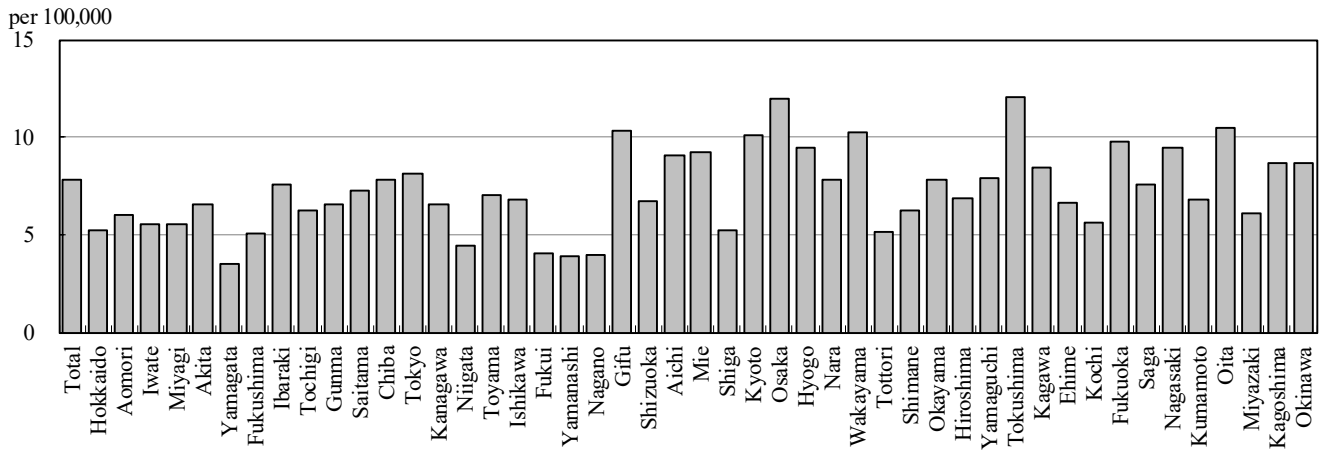


Figure 5. Notification rates of TB major city, Japan, summation (Jan.-Oct.) 2024

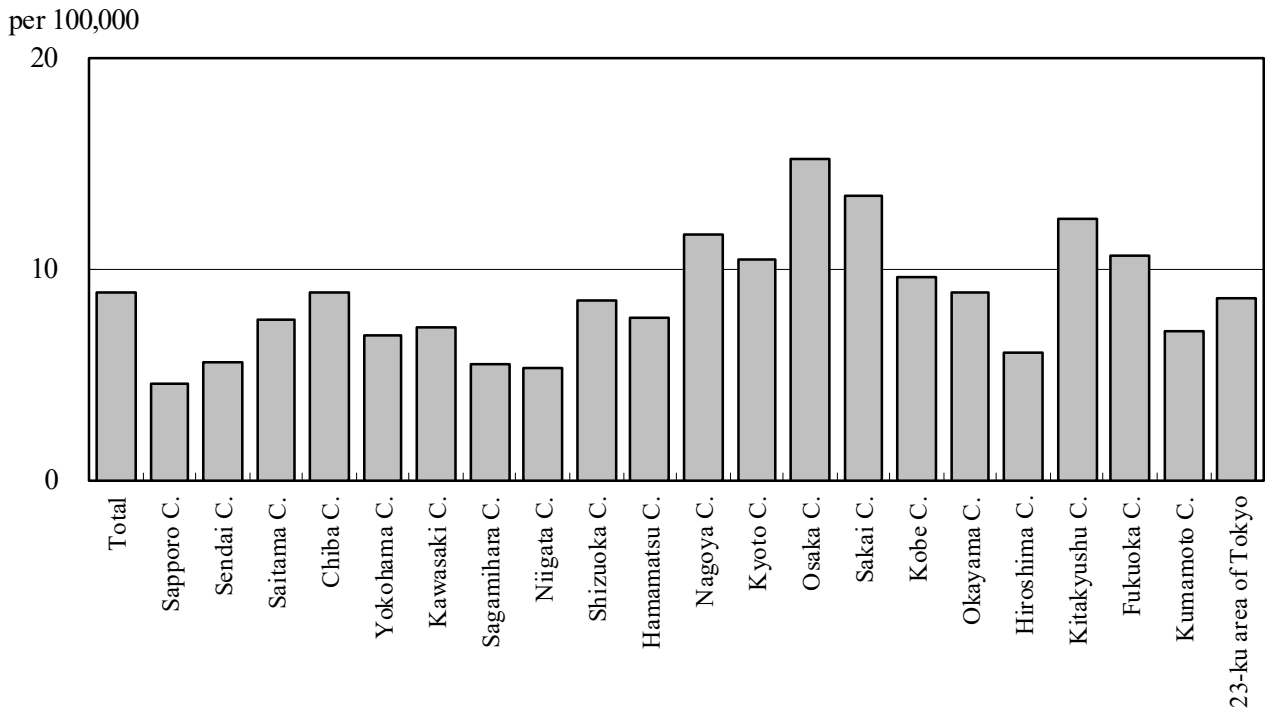


Figure 6. Number of LTBI, Japan, 2021-2024

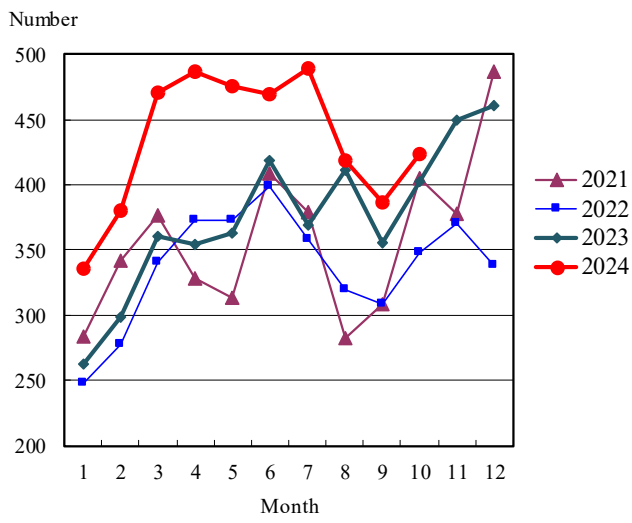


Figure 7. Number of LTBI by sex and age group, Japan, summation (Jan.-Oct.) 2024

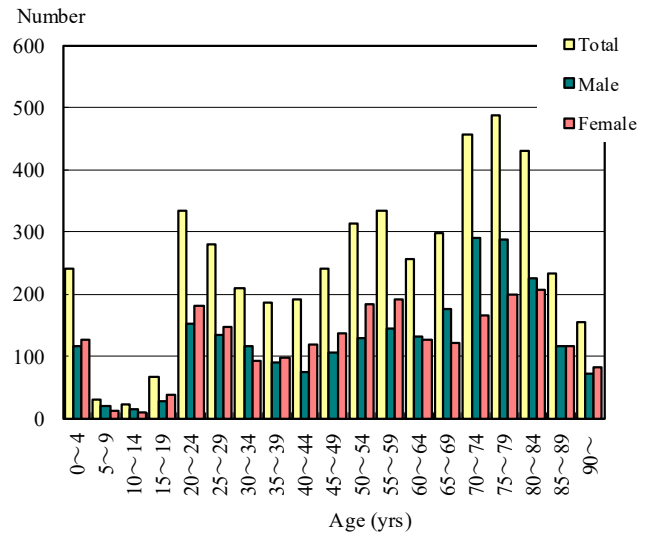


Table 1. Newly notified TB cases and rates by sex and age, Japan, 2024

	Oct.			Summation (Jan.-Oct.)			Notification rate (per 100,000)		
	Total	Male	Female	Total	Male	Female	Total	Male	Female
Total	732	425	307	8,079	4,629	3,450	7.8	9.2	6.5
0~4	1	0	1	14	6	8	0.4	0.3	0.5
5~9	0	0	0	4	4	0	0.1	0.2	0.0
10~14	0	0	0	6	3	3	0.1	0.1	0.1
15~19	9	5	4	78	49	29	1.7	2.1	1.3
20~24	46	22	24	537	284	253	10.3	10.6	10.0
25~29	55	30	25	491	234	257	9.1	8.4	9.8
30~34	20	11	9	263	134	129	4.9	4.9	5.0
35~39	21	15	6	183	92	91	3.1	3.1	3.2
40~44	11	6	5	191	103	88	3.0	3.1	2.8
45~49	20	12	8	187	107	80	2.5	2.8	2.1
50~54	25	13	12	275	165	110	3.4	4.1	2.8
55~59	31	16	15	318	206	112	4.6	6.0	3.2
60~64	23	13	10	307	201	106	4.9	6.5	3.4
65~69	41	29	12	353	243	110	5.8	8.2	3.5
70~74	37	29	8	559	381	178	7.6	11.0	4.6
75~79	72	43	29	869	573	296	14.0	20.4	8.6
80~84	129	76	53	1,111	658	453	22.6	32.1	15.8
85~89	96	62	34	1,177	657	520	35.5	54.5	24.7
90~	95	43	52	1,156	529	627	50.8	89.0	37.3

Temporary registrants = 54, Total of registrants and temporary registrants = 786

Rate: summation / (population\*10/12)\*100,000

Population: as of 1st Oct. 2023

Table 2. Newly notified sputum smear positive pulmonary TB cases and rates by sex and age, Japan, 2024

	Oct.			Summation (Jan.-Oct.)			Notification rate (per 100,000)		
	Total	Male	Female	Total	Male	Female	Total	Male	Female
Total	237	142	95	2,581	1,549	1,032	2.5	3.1	1.9
0~4	0	0	0	0	0	0	0.0	0.0	0.0
5~9	0	0	0	0	0	0	0.0	0.0	0.0
10~14	0	0	0	2	1	1	0.0	0.0	0.0
15~19	2	1	1	16	9	7	0.3	0.4	0.3
20~24	7	4	3	118	66	52	2.3	2.5	2.1
25~29	15	11	4	98	50	48	1.8	1.8	1.8
30~34	7	3	4	47	23	24	0.9	0.8	0.9
35~39	4	3	1	37	22	15	0.6	0.7	0.5
40~44	2	1	1	58	38	20	0.9	1.2	0.6
45~49	5	2	3	48	27	21	0.6	0.7	0.6
50~54	8	5	3	85	64	21	1.1	1.6	0.5
55~59	8	6	2	95	63	32	1.4	1.8	0.9
60~64	4	3	1	92	62	30	1.5	2.0	1.0
65~69	18	14	4	132	100	32	2.2	3.4	1.0
70~74	11	7	4	185	133	52	2.5	3.8	1.3
75~79	23	14	9	303	217	86	4.9	7.7	2.5
80~84	52	32	20	422	254	168	8.6	12.4	5.9
85~89	35	19	16	413	231	182	12.5	19.1	8.6
90~	36	17	19	430	189	241	18.9	31.8	14.3

Rate: summation / (population\*10/12)\*100,000

Population: as of 1st Oct. 2023

Table 3. Newly notified TB cases and rates by prefecture, Japan, 2024

	Oct.		Summation (Jan.-Oct.)		Notification rate (per 100,000)	
	Newly notified TB	Sputum smear (+)	Newly notified TB	Sputum smear (+)	Newly notified TB	Sputum smear (+)
Total	732	237	8,079	2,581	7.8	2.5
Hokkaido	27	5	220	58	5.2	1.4
Aomori	8	2	59	22	6.0	2.2
Iwate	6	1	54	17	5.6	1.8
Miyagi	8	3	104	35	5.5	1.9
Akita	4	1	50	13	6.6	1.7
Yamagata	4	1	30	7	3.5	0.8
Fukushima	8	2	75	32	5.1	2.2
Ibaraki	6	3	179	57	7.6	2.4
Tochigi	6	3	99	34	6.3	2.2
Gunma	6	1	104	34	6.6	2.1
Saitama	44	16	444	141	7.3	2.3
Chiba	24	9	409	142	7.8	2.7
Tokyo	93	34	950	303	8.1	2.6
Kanagawa	41	12	503	156	6.5	2.0
Niigata	6	2	78	22	4.4	1.2
Toyama	4	3	59	22	7.0	2.6
Ishikawa	3	1	63	14	6.8	1.5
Fukui	1	0	25	5	4.0	0.8
Yamanashi	2	1	26	8	3.9	1.2
Nagano	4	1	66	28	4.0	1.7
Gifu	19	5	166	43	10.3	2.7
Shizuoka	18	5	200	48	6.8	1.6
Aichi	55	23	567	184	9.1	3.0
Mie	14	1	133	43	9.2	3.0
Shiga	4	0	61	16	5.2	1.4
Kyoto	21	7	213	73	10.1	3.5
Osaka	77	36	873	328	12.0	4.5
Hyogo	47	16	424	151	9.5	3.4
Nara	7	3	84	28	7.8	2.6
Wakayama	6	2	76	30	10.2	4.0
Tottori	2	0	23	6	5.1	1.3
Shimane	2	1	34	11	6.3	2.0
Okayama	19	5	120	32	7.8	2.1
Hiroshima	9	3	156	33	6.8	1.4
Yamaguchi	2	0	85	20	7.9	1.8
Tokushima	7	3	70	21	12.1	3.6
Kagawa	7	2	65	12	8.4	1.6
Ehime	8	1	71	19	6.6	1.8
Kochi	3	1	31	13	5.6	2.3
Fukuoka	38	7	416	119	9.8	2.8
Saga	1	0	50	20	7.5	3.0
Nagasaki	9	1	100	23	9.5	2.2
Kumamoto	16	3	97	34	6.8	2.4
Oita	9	3	96	40	10.5	4.4
Miyazaki	7	1	53	19	6.1	2.2
Kagoshima	12	5	112	31	8.7	2.4
Okinawa	8	2	106	34	8.7	2.8

Rate: summation / (population\*10/12)\*100,000

Population: as of 1st Oct. 2023

Table 4. Newly notified TB cases and rates by major city, Japan, 2024

	Oct.		Summation (Jan.-Oct.)		Notification Rate (per 100,000)	
	Newly notified TB	Sputum Smear(+)	Newly notified TB	Sputum Smear(+)	Newly notified TB	Sputum Smear(+)
Total	242	83	2,759	895	8.8	2.9
Sapporo City	9	0	74	23	4.5	1.4
Sendai City	5	3	51	16	5.6	1.7
Saitama City	7	4	85	25	7.6	2.2
Chiba City	4	2	72	30	8.8	3.7
Yokohama City	12	4	216	63	6.9	2.0
Kawasaki City	10	4	93	34	7.2	2.6
Sagamihara City	0	0	33	12	5.5	2.0
Niigata City	3	0	34	11	5.3	1.7
Shizuoka City	4	2	48	18	8.5	3.2
Hamamatsu City	5	1	50	7	7.7	1.1
Nagoya City	22	11	225	82	11.6	4.2
Kyoto City	14	4	125	40	10.4	3.3
Osaka City	5	1	350	115	15.2	5.0
Sakai City	11	5	91	38	13.4	5.6
Kobe City	16	5	120	47	9.6	3.8
Okayama City	9	1	53	14	8.9	2.3
Hiroshima City	3	3	59	14	6.0	1.4
Kitakyushu City	17	4	94	27	12.3	3.5
Fukuoka City	8	1	145	48	10.6	3.5
Kumamoto City	9	3	43	16	7.0	2.6
23-ku area of Tokyo	69	25	698	215	8.6	2.6

Rate: summation / (population\*10/12)\*100,000

Population: as of 1st Oct. 2023

Major city: city with a population of one million or more.

Table 4 is a re-count of Table 3.

Table 5. LTBI cases and rates by sex and age, Japan, 2024

	Oct.			Summation (Jan.-Oct.)			(Ratio) LTBI/Newly notified cases		
	Total	Male	Female	Total	Male	Female	Total	Male	Female
Total	424	227	197	4,758	2,413	2,345	0.6	0.5	0.7
0~4	24	16	8	240	115	125	17.1	19.2	15.6
5~9	6	5	1	31	19	12	7.8	4.8	-
10~14	4	4	0	23	13	10	3.8	4.3	3.3
15~19	9	2	7	65	28	37	0.8	0.6	1.3
20~24	33	18	15	334	153	181	0.6	0.5	0.7
25~29	34	19	15	280	134	146	0.6	0.6	0.6
30~34	18	13	5	208	116	92	0.8	0.9	0.7
35~39	14	5	9	187	90	97	1.0	1.0	1.1
40~44	23	9	14	191	74	117	1.0	0.7	1.3
45~49	17	12	5	241	105	136	1.3	1.0	1.7
50~54	22	7	15	312	128	184	1.1	0.8	1.7
55~59	25	9	16	333	143	190	1.0	0.7	1.7
60~64	25	12	13	256	130	126	0.8	0.6	1.2
65~69	21	12	9	297	175	122	0.8	0.7	1.1
70~74	29	18	11	456	290	166	0.8	0.8	0.9
75~79	51	27	24	487	288	199	0.6	0.5	0.7
80~84	36	23	13	431	225	206	0.4	0.3	0.5
85~89	20	9	11	232	116	116	0.2	0.2	0.2
90~	13	7	6	154	71	83	0.1	0.1	0.1

LTBI: latent TB Infection

Number of LTBI is not included in the newly notified TB patients



Table 6. LTBI cases and rates by prefecture, Japan, 2024

	Oct.	Summation (Jan.-Oct.)	
	LTBI	LTBI	(Ratio) LTBI / new TB
Total	424	4,758	0.59
Hokkaido	35	210	0.95
Aomori	17	39	0.66
Iwate	4	42	0.78
Miyagi	5	73	0.70
Akita	2	14	0.28
Yamagata	0	19	0.63
Fukushima	2	28	0.37
Ibaraki	9	146	0.82
Tochigi	3	32	0.32
Gunma	3	52	0.50
Saitama	22	272	0.61
Chiba	21	300	0.73
Tokyo	46	569	0.60
Kanagawa	29	313	0.62
Niigata	3	49	0.63
Toyama	3	37	0.63
Ishikawa	0	31	0.49
Fukui	0	13	0.52
Yamanashi	3	19	0.73
Nagano	0	47	0.71
Gifu	13	89	0.54
Shizuoka	4	92	0.46
Aichi	20	234	0.41
Mie	2	49	0.37
Shiga	4	26	0.43
Kyoto	7	106	0.50
Osaka	34	507	0.58
Hyogo	13	209	0.49
Nara	8	53	0.63
Wakayama	5	44	0.58
Tottori	0	10	0.43
Shimane	14	55	1.62
Okayama	10	81	0.68
Hiroshima	13	115	0.74
Yamaguchi	4	36	0.42
Tokushima	2	22	0.31
Kagawa	3	38	0.58
Ehime	0	40	0.56
Kochi	2	6	0.19
Fukuoka	26	307	0.74
Saga	2	20	0.40
Nagasaki	4	45	0.45
Kumamoto	6	51	0.53
Oita	3	48	0.50
Miyazaki	3	23	0.43
Kagoshima	1	34	0.30
Okinawa	14	113	1.07

LTBI: Latent TB Infection

Number of LTBI is not included in the newly notified TB patients.

Table 7. LTBI cases and rates by major city, Japan, 2024

	Oct.	Summation (Jan.-Oct.)	
	LTBI	LTBI	(Ratio) LTBI / new TB
Total	122	1,706	0.62
Sapporo City	8	90	1.22
Sendai City	2	36	0.71
Saitama City	6	40	0.47
Chiba City	5	59	0.82
Yokohama City	18	141	0.65
Kawasaki City	5	67	0.72
Sagamihara City	2	23	0.70
Niigata City	2	27	0.79
Shizuoka City	0	21	0.44
Hamamatsu City	1	19	0.38
Nagoya City	6	82	0.36
Kyoto City	3	55	0.44
Osaka City	0	222	0.63
Sakai City	2	56	0.62
Kobe City	7	82	0.68
Okayama City	4	36	0.68
Hiroshima City	2	21	0.36
Kitakyushu City	7	77	0.82
Fukuoka City	7	83	0.57
Kumamoto City	3	18	0.42
23-ku area of Tokyo	32	451	0.65

LTBI: Latent TB Infection

Number of LTBI is not included in the newly notified TB patients,

Major city: city with a population of one million or more

Table 7 is a re-count of Table 6